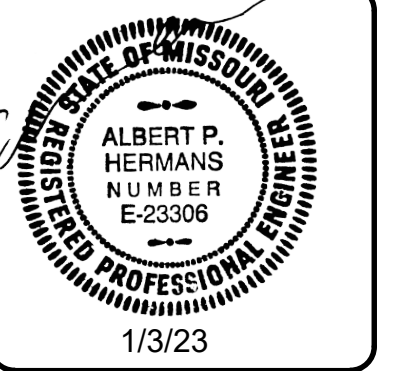


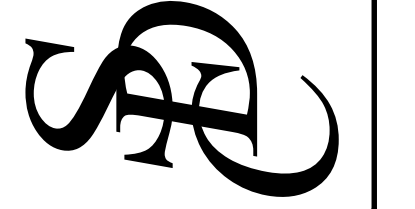
COPYRIGHT 2022 BY SDC ENGINEERING, INC. DRAWINGS MAY NOT BE DUPLICATED WITHOUT WRITTEN PERMISSION.

THIS DRAWING HAS BEEN DEVELOPED BY SDC ENGINEERING, INC. EXCLUSIVELY FOR ORCHARD PARK DEV. FOR THE PROJECT LISTED IN THIS TITLE BLOCK. ANY OTHER UNAUTHORIZED USE IS PROHIBITED.

SEQUOIA RESIDENTIAL
500 NW OLIVE STREET
LEE'S SUMMIT, MO

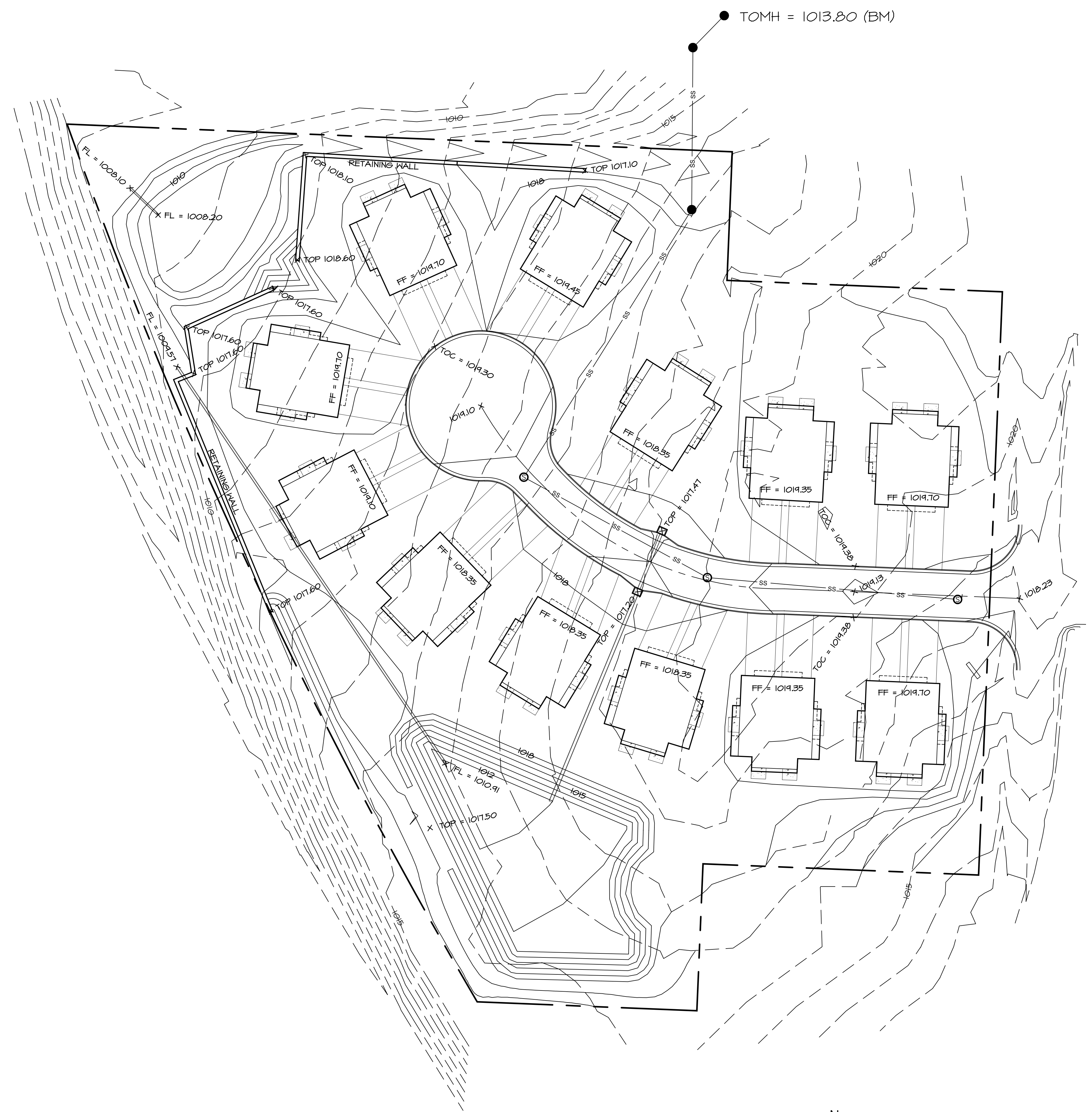


ENGINEERING, INC.
Consulting Structural and Civil Engineers
5907 Raytown Trafficway
Raytown, Missouri 64133
816-358-1445 Fax: 816-358-1477

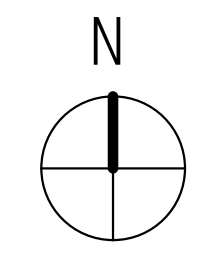


DATE:	12/24/22
REVISION	
1	
2	
3	
4	

DWS. **G1**



GRADING PLAN
SCALE: 1" = 30'-0"



REFERENCE PLANS PREPARED BY RENAISSANCE INFRASTRUCTURE CONSULTING DATED 6/11/20 FOR ADDITIONAL INFORMATION. SPECIFICALLY REFERENCE SHEET C05 - GRADING PLAN FOR ORIGINAL LAYOUT.