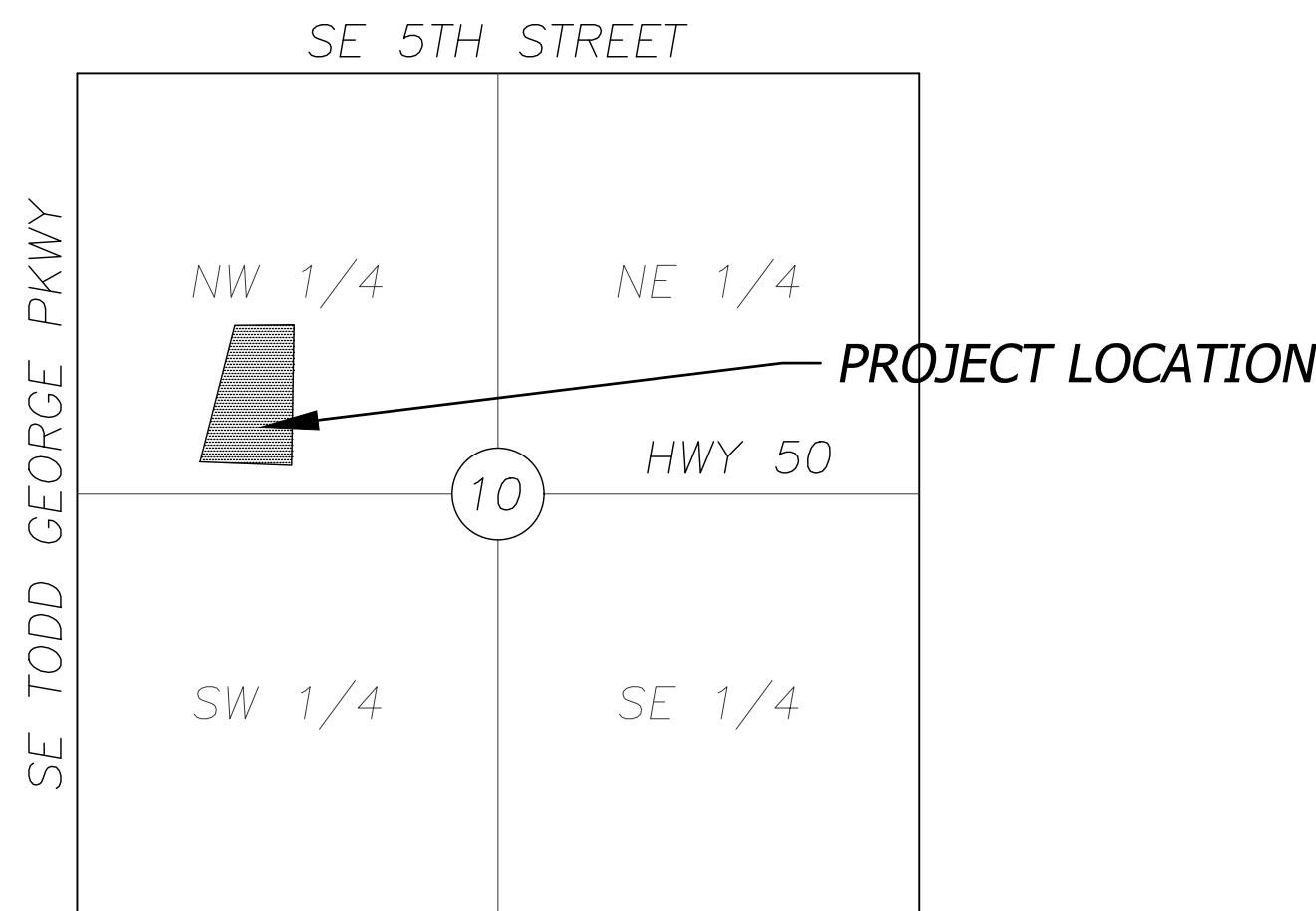


CITY OF LEE'S SUMMIT, MISSOURI  
HCA LSMC ASC  
SANITARY SEWER RELOCATION AND  
WATER MAIN ABANDONMENT  
CITY PROJECT NO. PL2023001/PL2023002



SECTION MAP

SCALE: 1" = 2000'  
SECTION 10-T47N-R31W  
JACKSON COUNTY, MISSOURI

UTILITY CONTACTS

CITY OF LEE'S SUMMIT, MO

PLANNING AND DEVELOPMENT

CITY HALL  
JOSH JOHNSON  
220 SE GREEN STREET  
LEE'S SUMMIT, MO 64063  
TEL: (816) 969-1600  
FAX: (816) 969-1619

CODES ADMINISTRATION

CITY HALL  
220 SE GREEN STREET  
LEE'S SUMMIT, MO 64063  
TEL: (816) 969-1200  
FAX: (816) 969-1201

PUBLIC WORKS

CITY HALL  
220 SE GREEN STREET  
LEE'S SUMMIT, MO 64063  
TEL: (816) 969-1800  
FAX: (816) 969-1809

WATER UTILITIES

CITY HALL  
1200 SE HAMBLIN RD  
LEE'S SUMMIT, MO 64063  
TEL: (816) 969-1900  
FAX: (816) 969-1935

ELECTRIC COMPANY

EVERGY  
TEL: (888) 471-5275

LEE'S SUMMIT FIRE DEPARTMENT

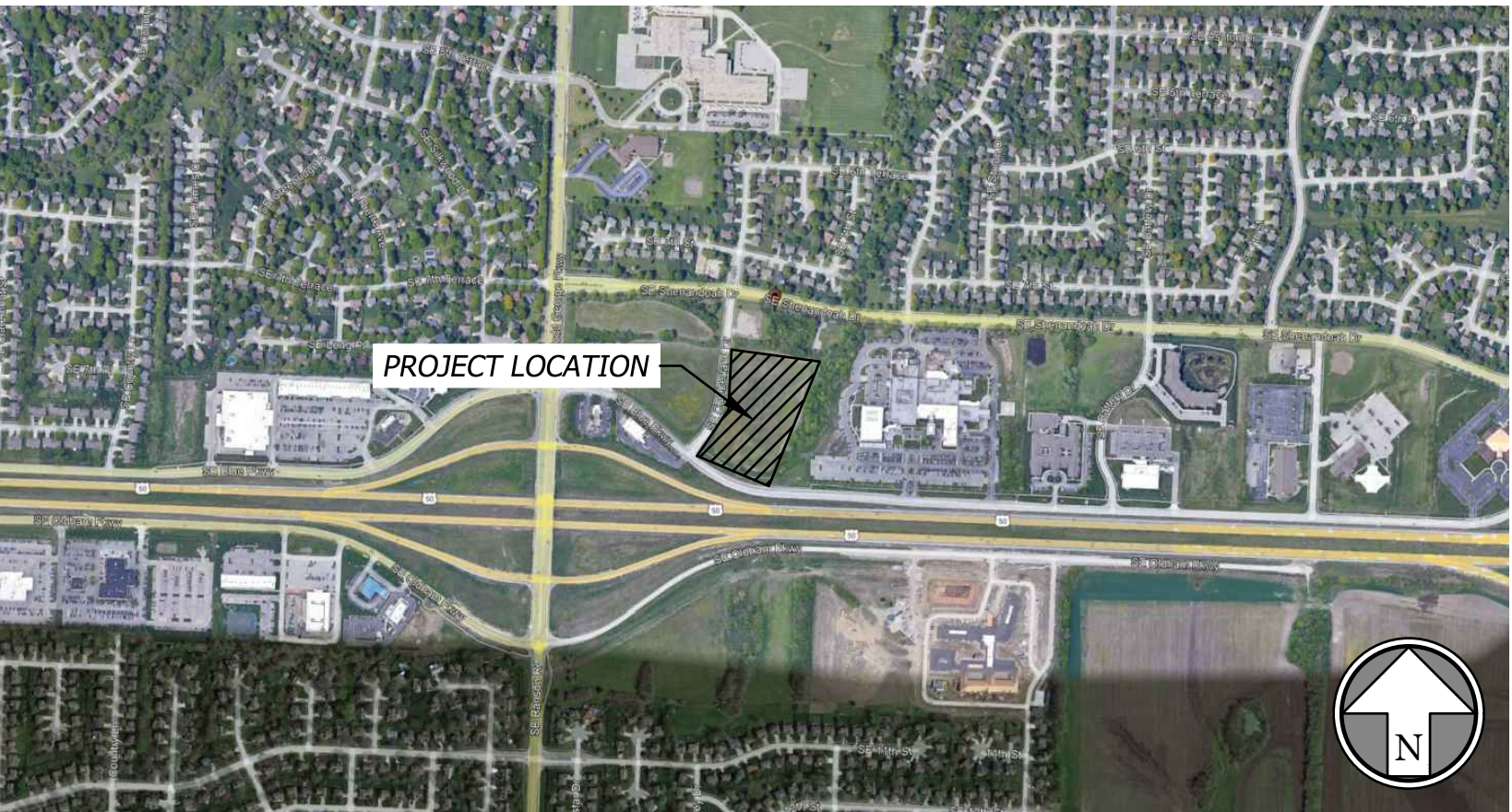
207 SE DOUGLAS ROAD  
LEE'S SUMMIT, MO 64063  
TEL: (816) 969-1300

GAS COMPANY

MISSOURI GAS ENERGY  
TEL: (816) 756-5252

TELEPHONE COMPANY

AT&T  
TEL: (800) 464-7928



VICINITY MAP

Not to Scale

Sheet List Table	
Sheet Number	Sheet Title
1	COVER SHEET
2	GENERAL LAYOUT
3	SANITARY PLAN AND PROFILE
4	EROSION CONTROL PLAN
5	CONSTRUCTION DETAILS

All existing utility locations shown are approximate only and are not guaranteed to be accurate or all inclusive. Contractor shall be responsible for contacting all utility companies and verifying the actual field locations of all utilities prior to any construction activity. Contractor shall keep all utility locations current. Utilities damaged through the negligence of the contractor to obtain the proper field locations shall be the responsibility of the contractor to repair or replace at their expense and at the direction of the utility company. The contractor shall pothole and survey all utility crossings prior to construction of any portion of storm sewer, sanitary sewer laterals, underdrains, conduit and any other subsurface element of the project. The survey information shall be forwarded to the project engineer for review. The contractor shall not begin construction on any subsurface element on the project without the approval of the project engineer. Utility coordination, potholing/surveying shall be subsidiary to other bid items.

PROJECT CONTROL TABLE  
(NAD83 MISSOURI STATE PLANE, WEST ZONE, US SURVEY FOOT)

POINT NO.	CONTROL POINT/ BENCHMARK DESCRIPTION	GROUND VALUE NORTHING COORDINATE	GROUND VALUE EASTING COORDINATE	ELEV.
1	CP1 /IB4 W CAP BASE	996651.33	2835160.01	1005.91'
10	CP10 IB4 W CAP	996709.77	2835166.68	1004.75'
11	CP11 /IB4 W CAP	996282.25	2835096.83	1009.27'
2502	BM1 / SQUARE ON INLET	996690.68	2835166.32	1005.01'

PREPARED & SUBMITTED BY:

BHC RHODES  
OVERLAND PARK, KANSAS

ERIC BYRD, P.E.

02/01/2023  
DATE

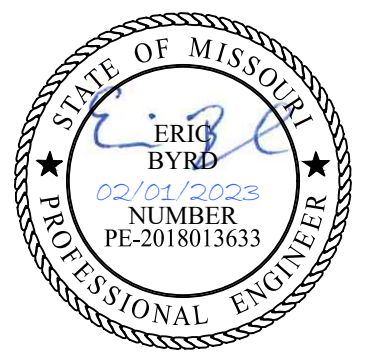
APPROVED:

BY THE CITY OF LEE'S SUMMIT, MISSOURI.

CITY ENGINEER

DATE

Rev	Date	Description	By	App.
1	2/1/23	City Comments		



Prepared For:  
HCA LSMC ASC  
1950 SE Sherandoah Drive  
LEE'S SUMMIT, MO 64063

SEWER RELOCATION AND WATER ABANDONMENT  
HCA LSMC ASC  
LEE'S SUMMIT, MO 64063  
COVER SHEET

Design: EB Drawn: JS  
Checked: EB  
Issue Date: 12/21/2022  
Project Number: 34660



Feb. 01, 2023 - 9:59am Plotted By: Eric Byrd V:\034660-hca lsmc asc\04-DWG\Eng\Sheet\Sewer\034660-SPTS-016ALL-SS.dwg Layout: Sanitary Sewer Overall Plan

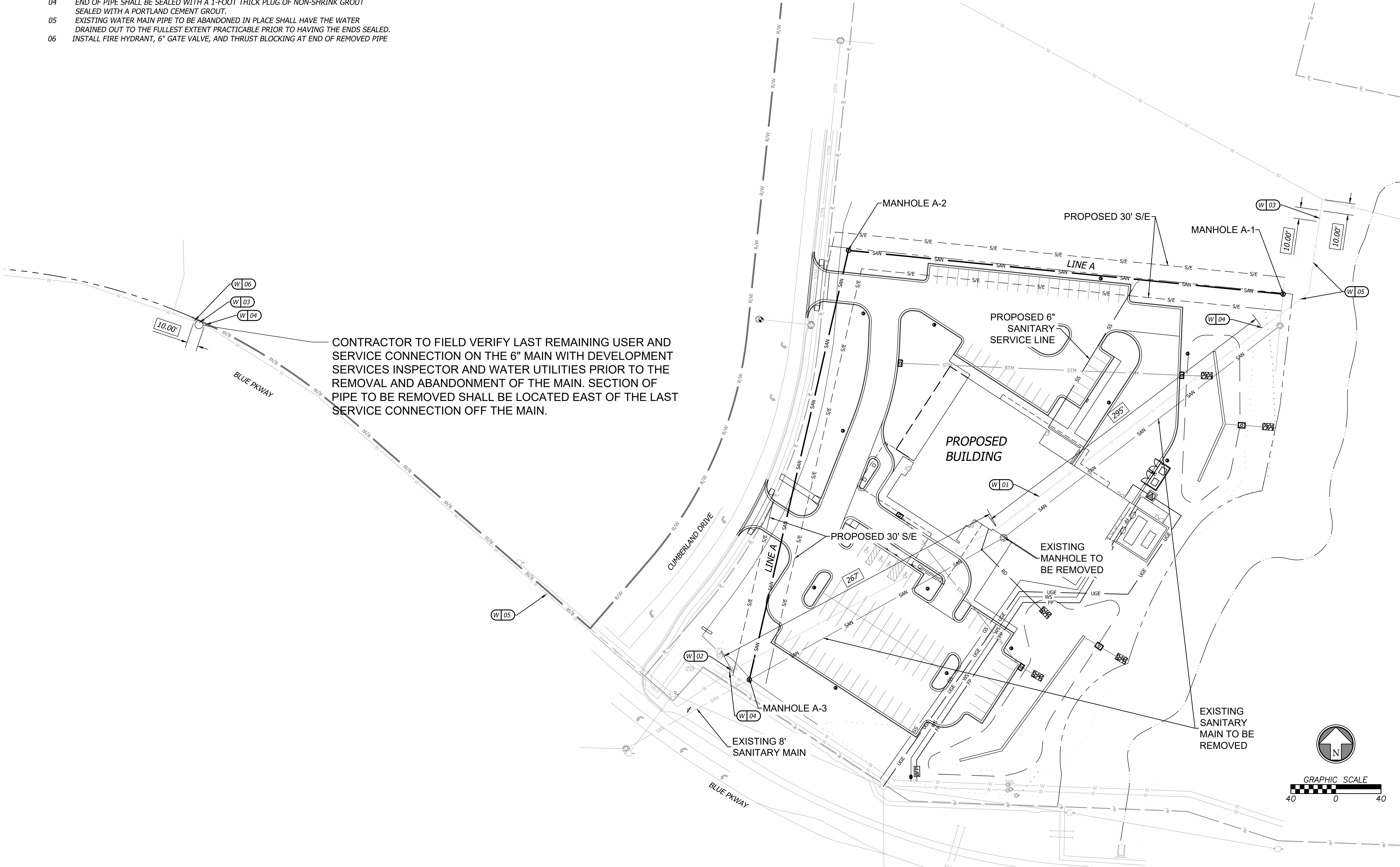
X 00 UTILITY CONSTRUCTION NOTES

W - WATER SERVICE INFORMATION - CITY OF LEE'S SUMMIT

- 01 REMOVE EXISTING 6" WATER MAIN FROM EXISTING VALVE AT SOUTH END OF SITE TO THE NORTH END OF THE PROJECT SITE. GENERAL LENGTHS ARE PROVIDED BELOW.  
02 REMOVE EXISTING 6" WATER VALVE.  
03 REMOVE 10' SECTION OF WATER MAIN PIPE.  
04 END OF PIPE SHALL BE SEALED WITH A 1-FOOT THICK PLUG OF NON-SHRINK GROUT SEALED WITH A PORTLAND CEMENT GROUT.  
05 EXISTING WATER MAIN PIPE TO BE ABANDONED IN PLACE SHALL HAVE THE WATER DRAINED OUT TO THE FULLEST EXTENT PRACTICABLE PRIOR TO HAVING THE ENDS SEALED.  
06 INSTALL FIRE HYDRANT, 6" GATE VALVE, AND THRUST BLOCKING AT END OF REMOVED PIPE

UTILITY GENERAL NOTES

1. CONTRACTOR SHALL REFER TO ALL SPECIFICATIONS, GUIDELINES, AND INSTALLATION DRAWINGS FROM THE CITY OF LEE'S SUMMIT.  
2. CONTRACTOR TO ENSURE 18" MINIMUM SEPARATION BETWEEN WATER MAIN AND STORM/SANITARY LINES AT CROSSINGS PER LEE'S SUMMIT DESIGN STANDARDS. CONTRACTOR TO CALL CIVIL IF ANY CONFLICTS BETWEEN UTILITIES ARE FOUND.  
3. CONTRACTOR TO RESTORE EXISTING CONDITIONS IF DEMOLISHED/DAMAGED DURING CONSTRUCTION TO MEET CITY OF LEE'S SUMMIT STANDARDS.



SEWER RELOCATION AND WATER ABANDONMENT		HCA LSMC ASC		LEE'S SUMMIT, MO 64063	
GENERAL LAYOUT					
Design: EB	Drawn: JS				
Checked: EB					
Issue Date: 12/21/2022					
Project Number: 34660					
2					

STATE OF MISSOURI  
ERIC BYRD  
02/01/2023  
NUMBER  
PE-2018013633  
PROFESSIONAL ENGINEER

**ELC**  
CIVIL ENGINEERING / SURVEYING / UTILITIES  
7101 College Blvd., Suite 400  
Overland Park, KS 66210  
Overland Park, KS 66210  
913.663.1800  
EPC is a subsidiary of EPC Group of Companies, P.A.

Prepared For:  
HCA LSMC ASC  
1950 E Shenandoah Drive  
LEE'S SUMMIT, MO 64063

Design: EB Drawn: JS  
Checked: EB  
Issue Date: 12/21/2022  
Project Number: 34660

2

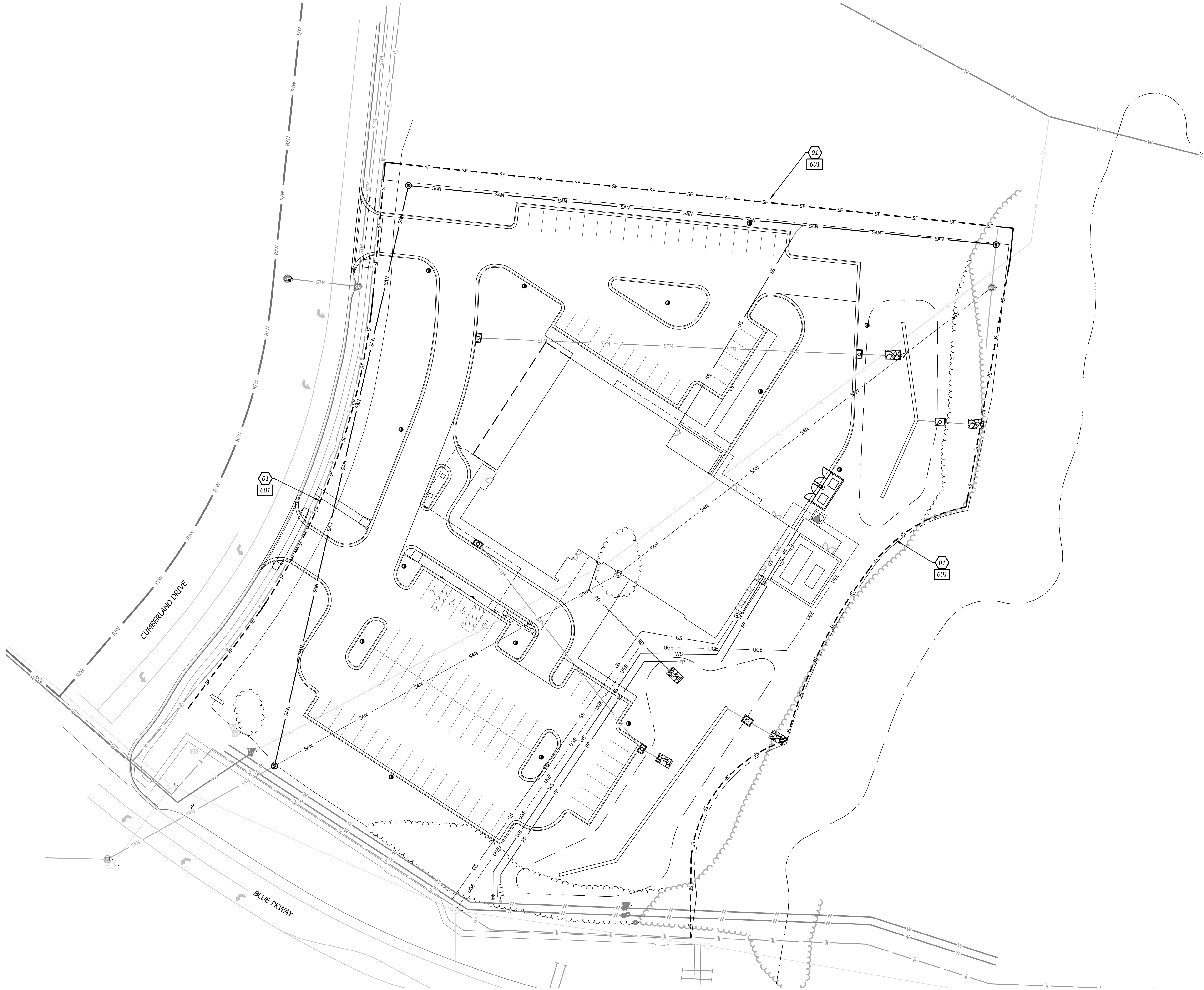
Rev	Date	Description	By	App.
1	2/1/23	City Comments		







Feb 01, 2023 - 9:59am Plotted By: Eric Byrd V:\034660-hca lsmc ans\04-DWG\Eng\Sheet\Sewer\034660-SFTS-ESN-SS.dwg Layout: SS ERSN CTRL PLAN

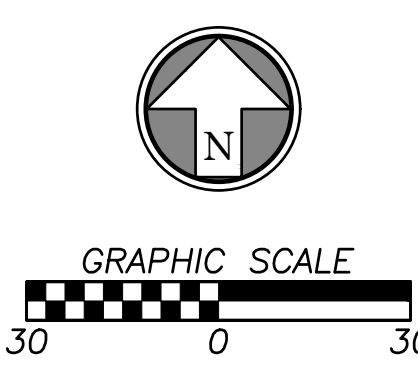


- CONSTRUCTION NOTES**
- 01 FILTER FABRIC SILT FENCE TO BE PLACED

- DETAILS**
- SEE DETAIL (SHEET 5) FOR THE FOLLOWING
- 601 FILTER FABRIC SILT FENCE

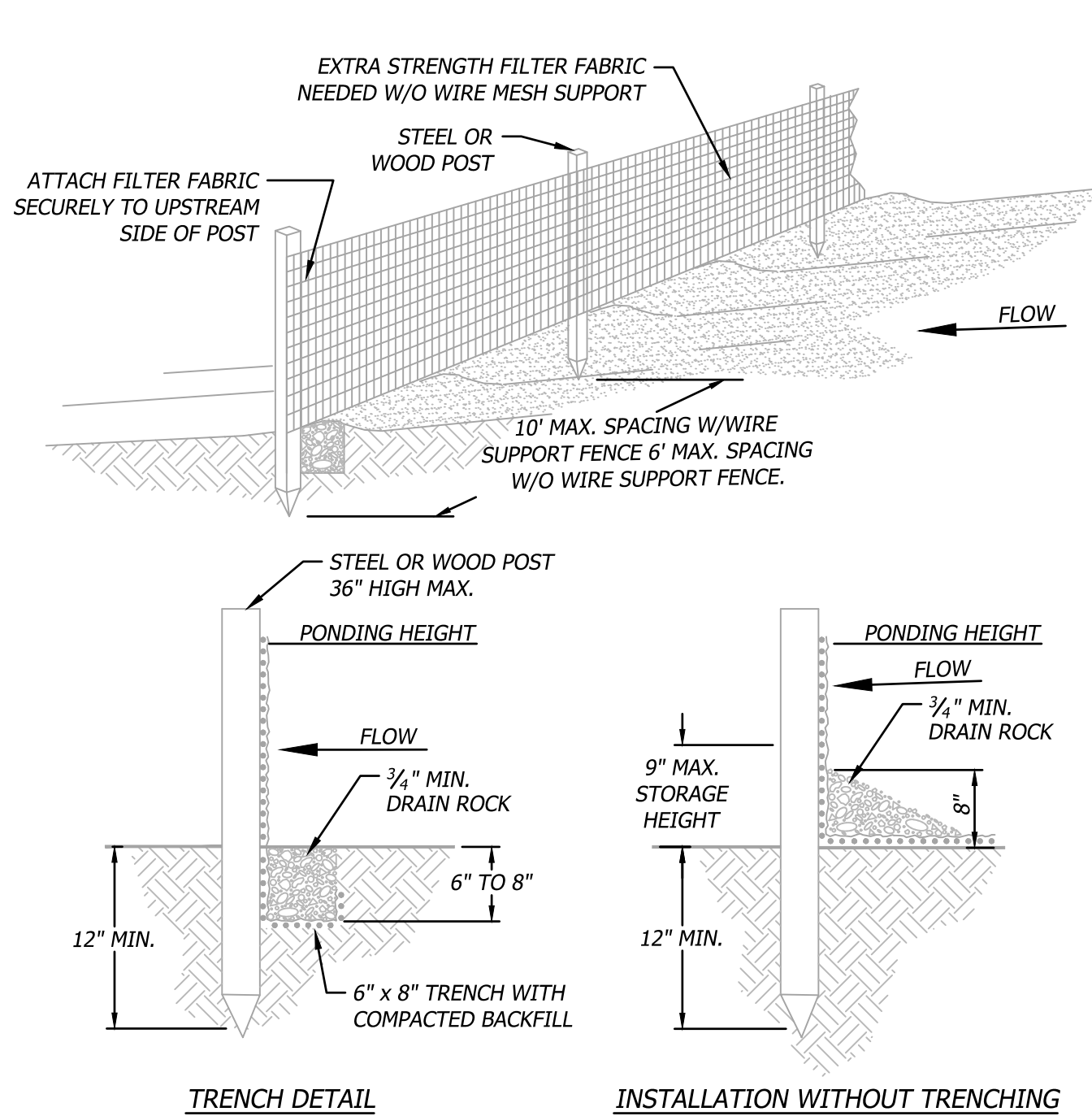
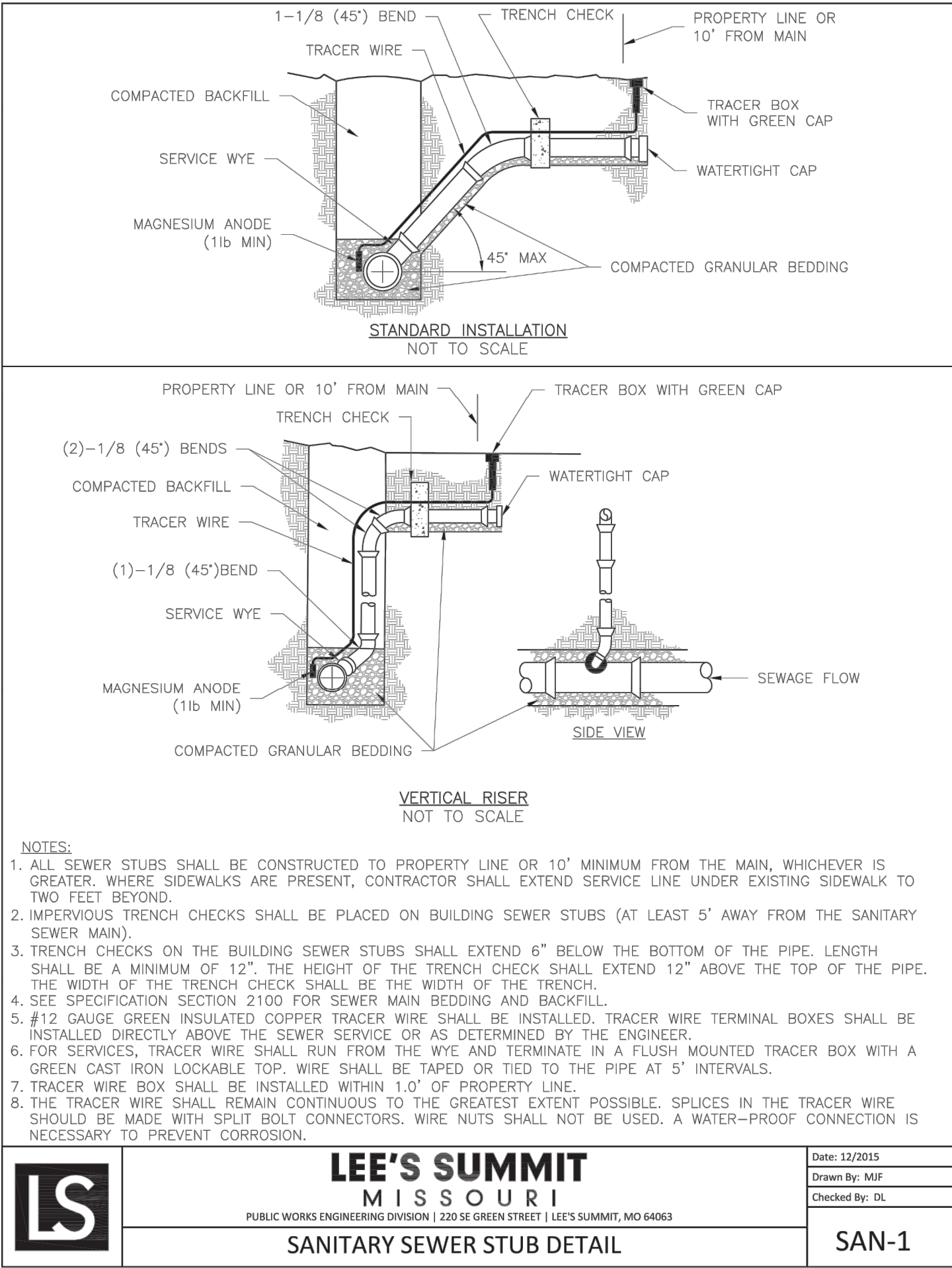
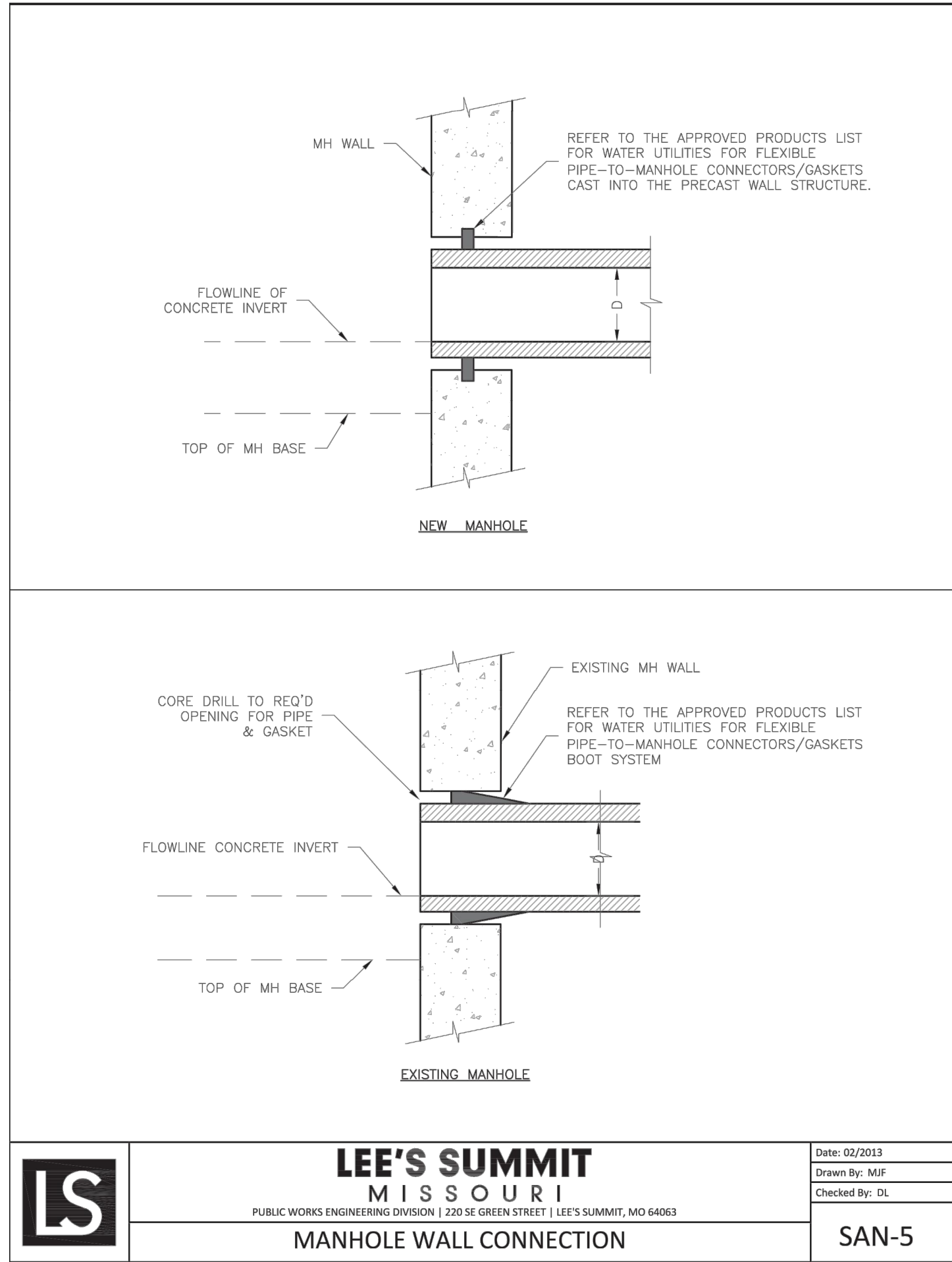
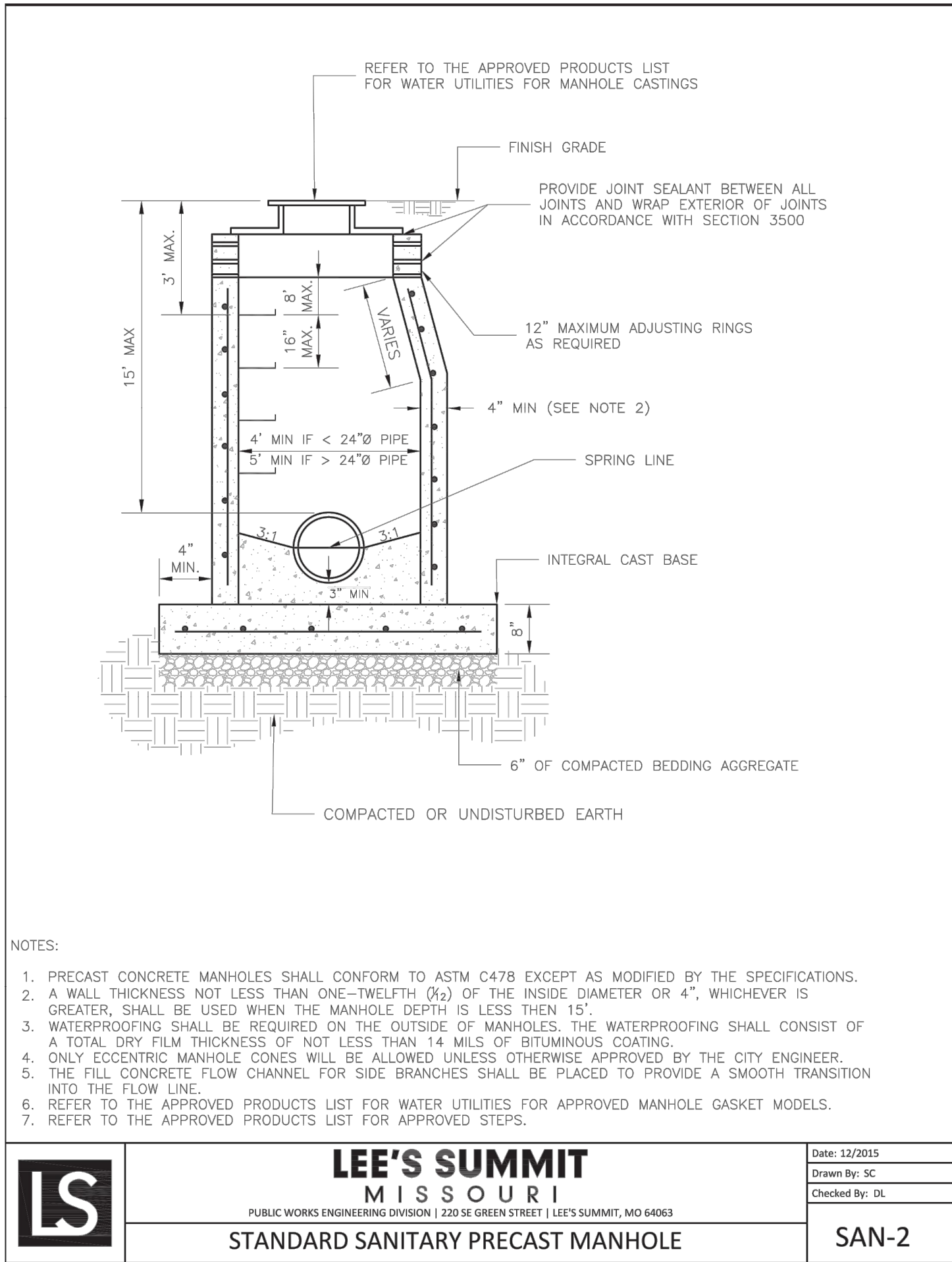
**EROSION CONTROL LEGEND**

--- SF --- SILT/SEDIMENT FENCE



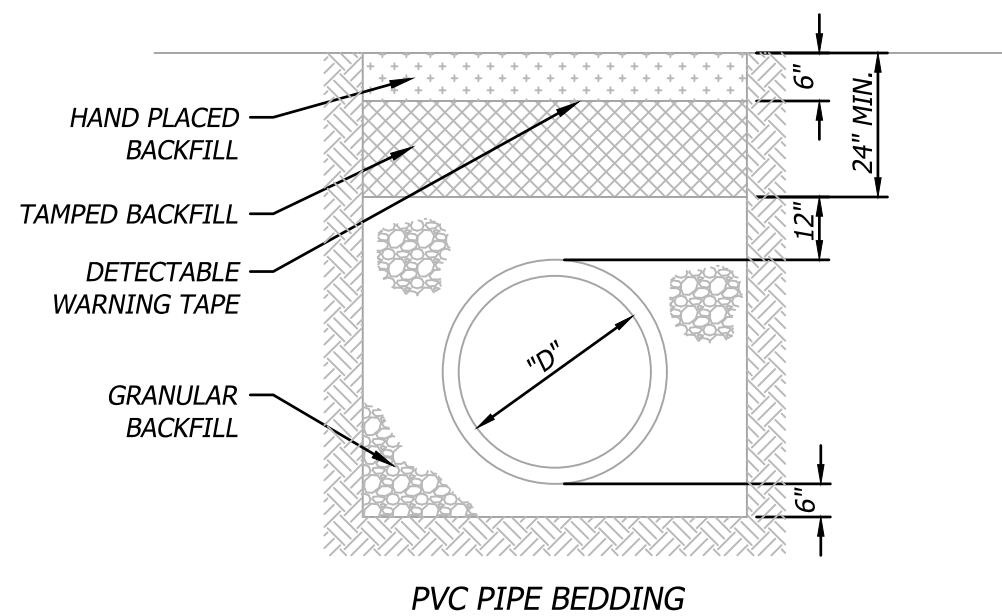
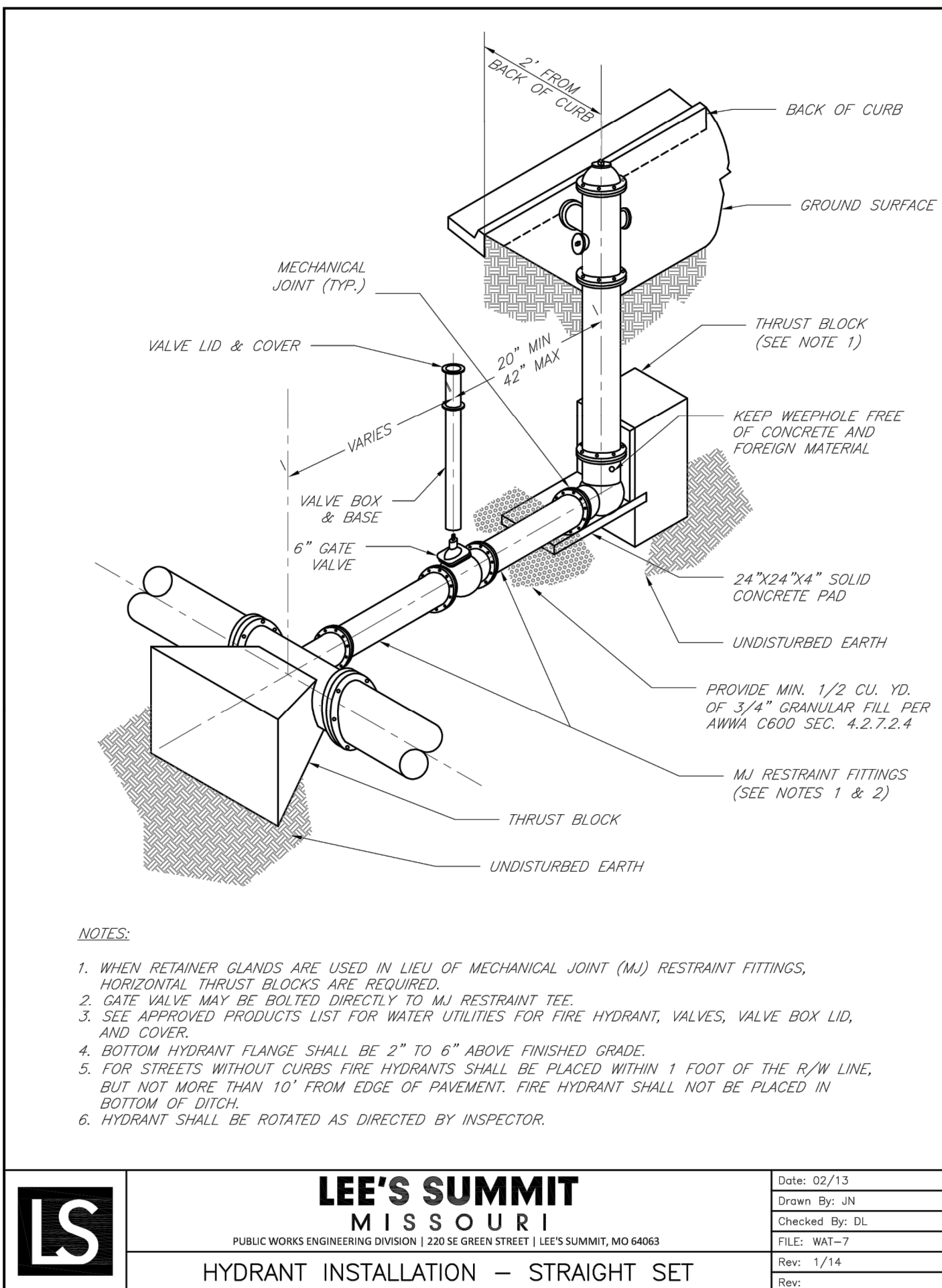
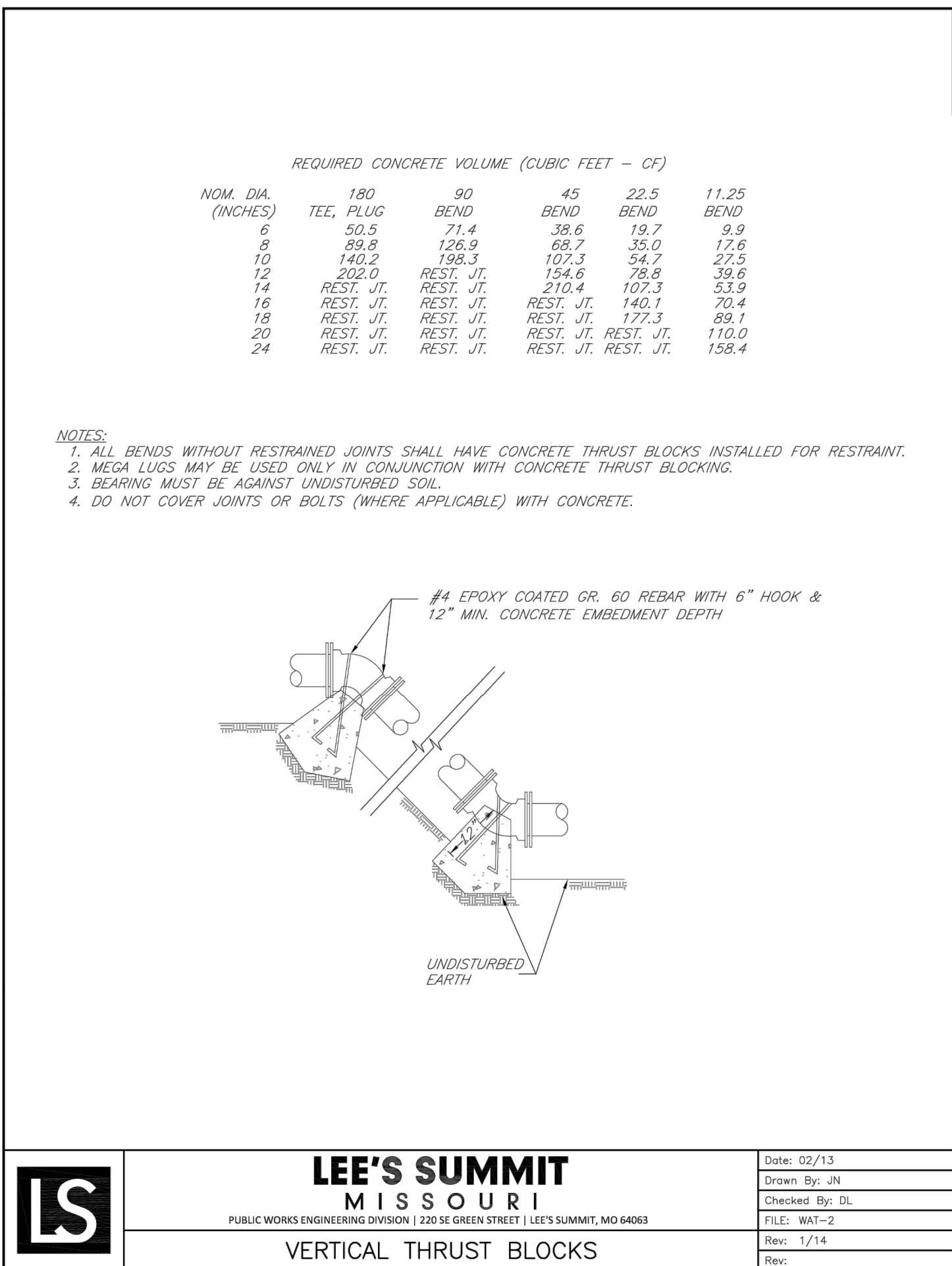
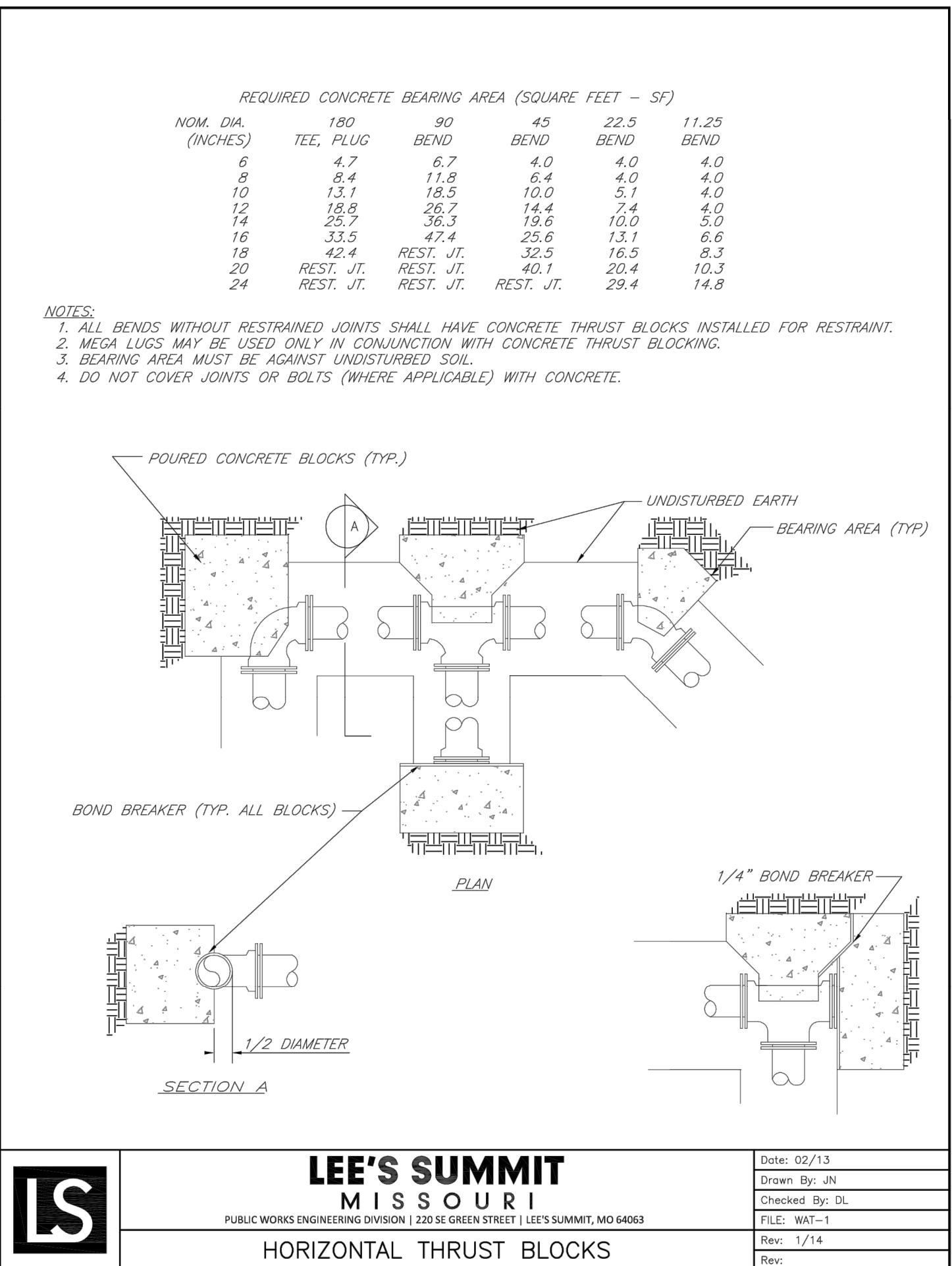
SEWER RELOCATION AND WATER ABANDONMENT		HCA LSMC ASC		DESIGN: EB DRAWN: JS	
LEE'S SUMMIT, MO 64063		1950 Shenandoah Drive		CHECKED: EB	
EROSION CONTROL PLAN		LEE'S SUMMIT, MO 64063		ISSUE DATE: 12/21/2022	
				PROJECT NUMBER: 34660	
				DATE: 2/1/23	
				BY: [Signature]	
				APP: [Signature]	
				CITY COMMENTS:	
				DESCRIPTION:	





601 Filter Fabric Silt Fence

Not to Scale



- NOTES:
1. GRANULAR FILL SHALL PER APWA SECTION 2101.4.G.
  2. TAMPED FILL SHALL BE FINELY DIVIDED, JOB EXCAVATED MATERIAL FREE OF DEBRIS, ORGANIC MATERIAL, AND STONES, COMPACTED TO MIN. 90% MAXIMUM DENSITY USING ASTM D698, LIFTS NOT EXCEEDING 6 INCHES.
  3. HAND PLACED FILL SHALL BE FINELY DIVIDED MATERIAL, FREE OF DEBRIS AND STONES, PER APWA SECTION 2102.7. ALL PIPE SHALL BE INSPECTED PRIOR TO BACKFILL.
  4. ALL PIPE COVERED PRIOR TO INSPECTION SHALL BE UNCOVERED AT THE CONTRACTORS EXPENSE.

306 Pipe Bedding

Not to Scale