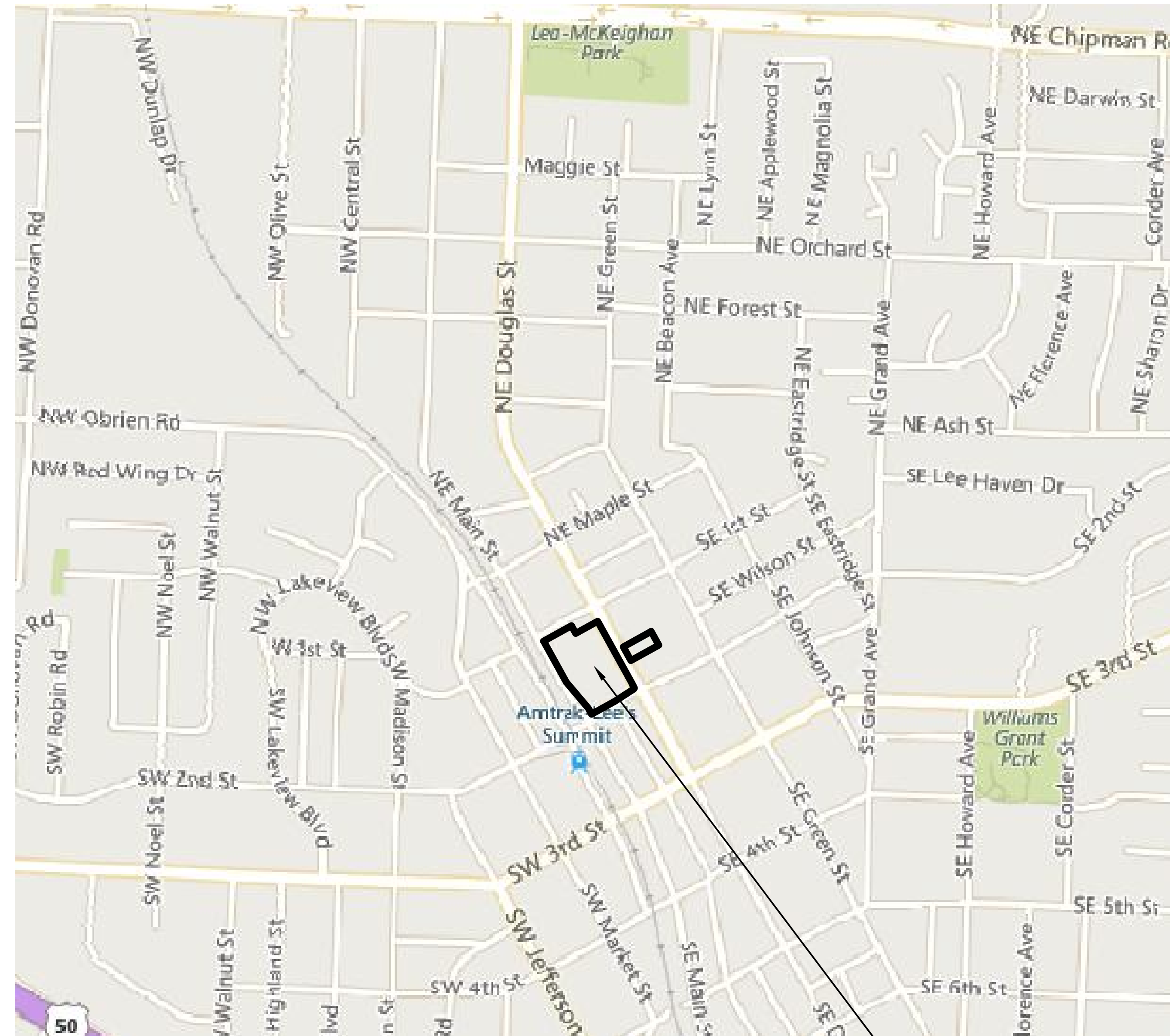


**Accepted
Record Drawings**

These plans have been reviewed for accuracy and are accepted for basic conformance to the approved construction drawings.

	INDEX
1	COVER SHEET
2	SANITARY SEWER PLAN & PROFILE
3	STORM SEWER PLAN & PROFILE
4	SANITARY SEWER DETAILS
5	STORM SEWER DETAILS



PHELPS ENGINEERING, INC.
 1270 N. WINCHESTER
 OLATHE, KS 66061
 913-393-1155 OFFICE
 913-393-1166 FAX
 CONTACT: DOUG UBBEN, JR.

MISSOURI GAS ENERGY LUCAS WALLS (LUCAS.WALLS@SUG.COM) 3025 SOUTHEAST CLOVER DRIVE LEE'S SUMMIT, MO 64082	(816) 969-2218
KANSAS CITY POWER & LIGHT CO. PHILLIP INGRAM (PHILLIP.INGRAM@KCPL.COM) RON DEJARNETTE (RON.DEJARNETTE@KCPL.COM) 1300 HAMBLEN ROAD LEE'S SUMMIT, MO 64081	(816) 347-4339 (816) 347-4316
SEWER & WATER (CITY OF LEE'S SUMMIT) GENE WILLIAMS (PUBLICWORKS@CITYOFLS.NET) 220 SE GREEN STREET LEE'S SUMMIT, MO 64063	(816) 969-1800
WATER (CITY OF LEE'S SUMMIT) MIKE WEISENBORN (PUBLICWORKS@CITYOFLS.NET) 220 SE GREEN STREET LEE'S SUMMIT, MO 64063	(816) 969-1240
AT&T MR. CLAYTON ANSPAUGH (CA40809@ATT.COM) 9444 NALL AVENUE OVERLAND PARK, KANSAS 66207	(913) 383-4929 (913) 383-4849-FAX
EVERGY DOUG DAVIN (DOUG.DAVIN@EVERGY.COM)	(816) 347-4320
GOOGLE FIBER	
BLUEBIRD	
TIMEWARNER	

VERTICAL DATUM = NAVD88 BASED ON GPS OBSERVATION USING MODOT VRS.
BM 1. RAILROAD SPIKE IN POWER POLE AT NORTHWEST QUADRANT OF 1ST STREET AND DOUGLAS STREET.
ELEVATION = 1043.06
BM 2. SQUARE CUT ON BACK OF CURB AT THE SOUTHWEST QUADRANT OF 2ND STREET AND DOUGLAS STREET.
ELEVATION = 1043.56
BM 3. SQUARE CUT ON THE NORTHWEST CORNER OF SIGNAL POLE BASE AT SOUTHEAST QUADRANT OF 2ND STREET AND MAIN STREET.
ELEVATION = 1029.82
BM 4. RAILROAD SPIKE IN POWER POLE AT NORTHEAST QUADRANT OF 1ST STREET AND MAIN STREET.
ELEVATION = 1049.87

LOT 1, DOWNTOWN LEE'S SUMMIT APARTMENTS, A SUBDIVISION IN LEE'S SUMMIT, JACKSON COUNTY, MISSOURI
TOGETHER WITH:

LOT 10, BLOCK 16, WM. B. HOWARD'S FIRST ADDITION TO THE TOWN OF STROTHER, NOW THE CITY OF LEE'S SUMMIT, A SUBDIVISION IN LEE'S SUMMIT, JACKSON COUNTY, MISSOURI, TOGETHER WITH THE SOUTHEASTERLY HALF OF THE VACATED ALLEY LYING NORTHWESTERLY AND ADJOINING AND ALSO TOGETHER WITH THE SOUTHWESTERLY HALF OF THE VACATED ALLEY LYING NORTHEASTERLY AND ADJOINING.

FLOOD NOTE:
THE SUBJECT PROPERTY LIES WITHIN ZONE X, DEFINED AS AREAS DETERMINED TO BE OUTSIDE THE 0.2% ANNUAL CHANCE FLOODPLAIN, AS SHOWN ON THE FLOOD INSURANCE RATE MAP PREPARED BY THE FEDERAL EMERGENCY MANAGEMENT AGENCY FOR THE CITY OF LEE'S SUMMIT, COMMUNITY NO. 290174, JACKSON COUNTY, MISSOURI, MAP NO. 29095C0417G, AND DATED JANUARY 20, 2017.

PUBLIC STORM SEWERS:		QUANTITY
ITEM		
1.	15" HDPE***	201 L.F.
2.	18" HDPE***	787 L.F.
3.	4'x4' JUNCTION BOX	8 EA.
4.	4'x5' JUNCTION BOX	1 EA.
5.	INSERTA TEE	9 EA.
6.	FLOWABLE FILL	82 L.F.

*** UNCLASSIFIED TRENCH & TAMPED BACKFILL

PUBLIC SAN SEWER:		QUANTITY
ITEM		
1.	4' DIA. MANHOLE	1 EA.

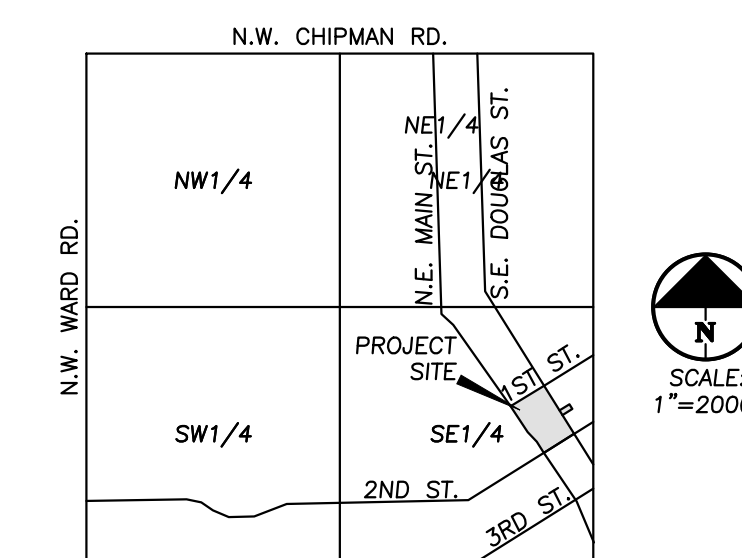
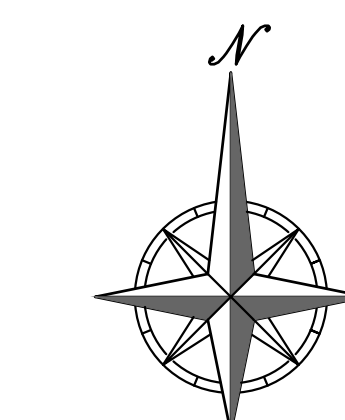
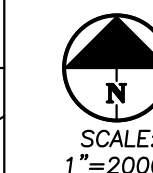
The information provided on this drawing conforms to construction records; it is not intended for construction, implementation or recording purposes; and it is solely based on information *obtained by my firm*.

~~"100.00 100.10", "1.00% 1.15% slope", or "8-inch HDPE PVC pipe"~~ are all typical examples of revisions that indicate that design data has been replaced with "as-built" information. All other data is as designed and has not been field verified.

Date: 11-18-22


Certified by: **DOUGLAS EUGENE UBBEN, JR.**

Title: **PROFESSIONAL ENGINEER**

Firm: **PHELPS ENGINEERING, INC.**VICINITY MAP
SEC. 6-T47N-R31W

SCALE: 1"=500'

0' 500' 1000'

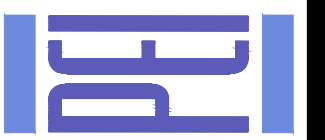
A horizontal graphic scale bar with alternating black and white segments. It is marked with '0' at the left end, '500' in the middle, and '1000' at the right end.

Know what's **below**.
Call before you dig.



PHelps ENGINEERING, INC.
1270 N. Winchester
Olathe, Kansas 66061
(913) 393-1155
Fax (913) 393-1166
www.phelpsengineering.com

PLANNING
ENGINEERING
IMPLEMENTATION



COVER SHEET

COVER SHEET
DOWNTOWN LEE'S SUMMIT APARTMENTS
114 S.E. DOUGLAS STREET
LEE'S SUMMIT, JACKSON COUNTY, MISSOURI

PROJECT NO.	171125	No.	Date		By / App.
DATE OF DRAWING	5-14-2020	1.	5-14-2020	KAD DELU	E.S.I. #3
CHECKED BY	DAT	APPROVED BY	7-7-2020	KAD DELU	E.S.I. #4
DATE OF AUTHORIZATION					
NAME OF ENGINEER IN CHARGE	"E-36"				
CERTIFICATE OF AUTHORIZATION					
DATE AND SIGNATURE	2020/05/28				
ENGINEERING NO.	050598				

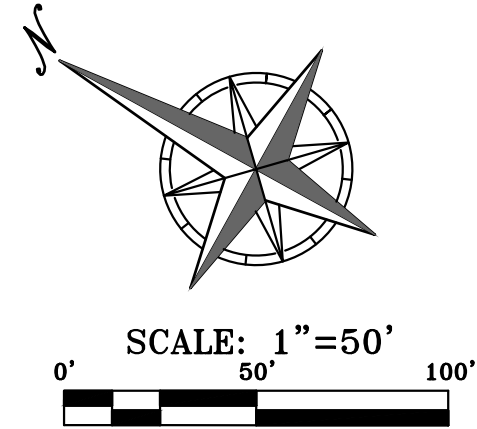
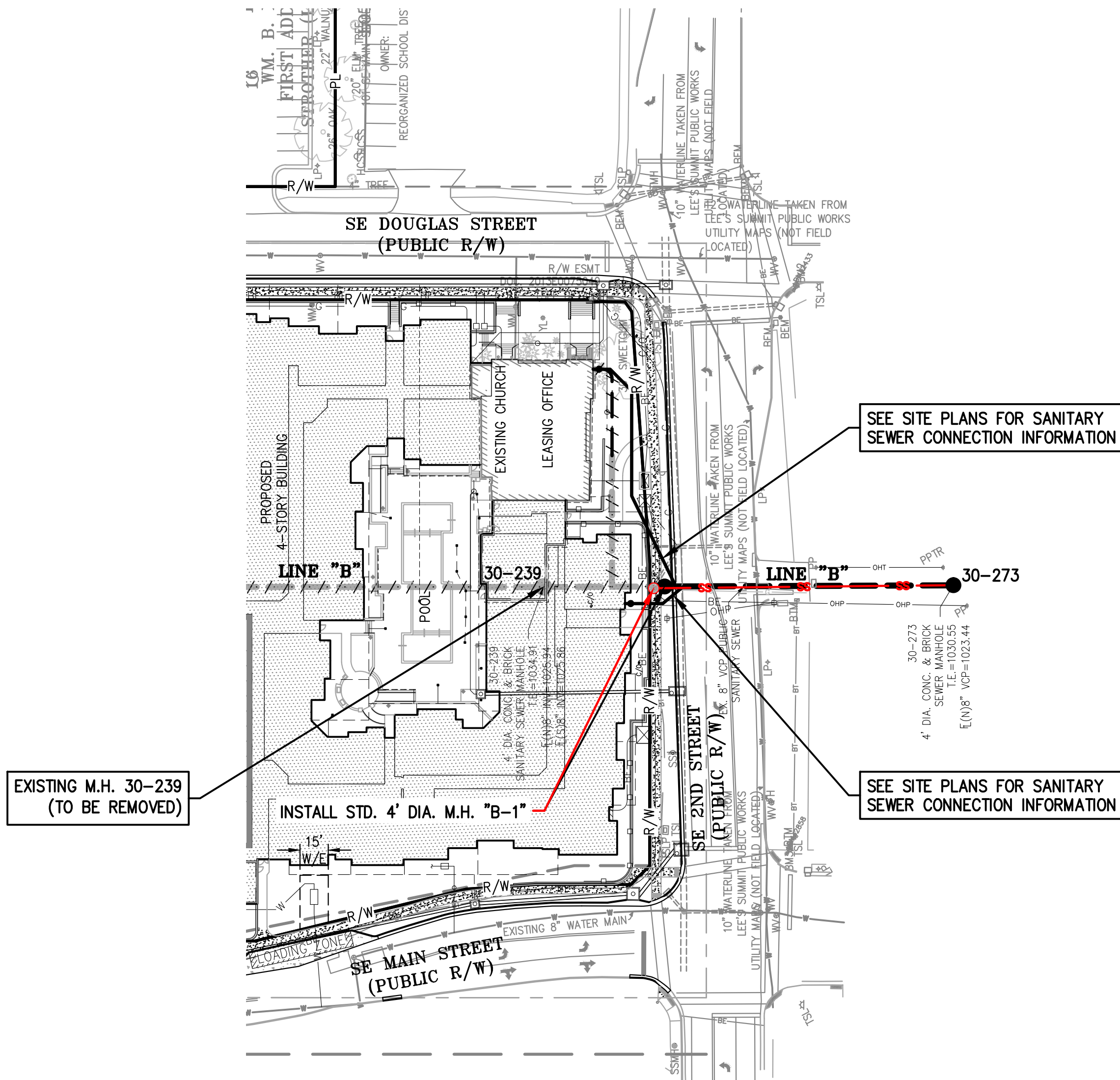
SHEET

1

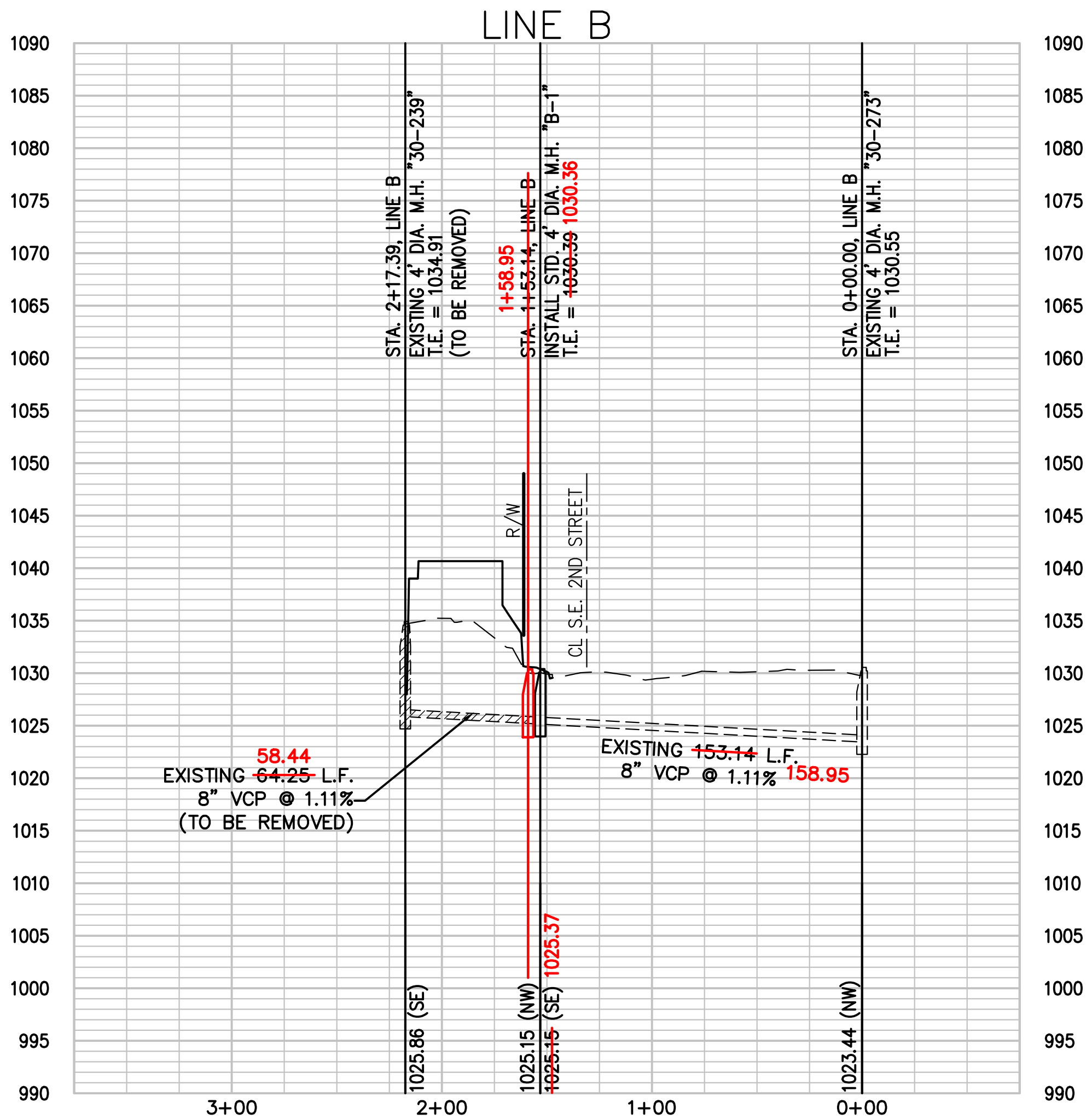
\\PHILIPS-SERVER\Projects\171125.dwg\Public Sanitary & Storm Plans\SANITARY.dwg Layout:1 Nov 18, 2022 - 1:18pm Shell Hatcher

Accepted
Record Drawings

These plans have been reviewed for accuracy and are accepted for basic conformance to the approved construction drawings.



SCALE: 1"=50' HORIZ.
1"=10' VERT.



RECORD DRAWING

The information provided on this drawing conforms to construction records; it is not intended for construction, implementation or recording purposes; and it is solely based on information obtained by my firm.

"~~100.00~~ 100.10", "~~1.00%~~ 1.15% slope", or "8-inch ~~HDP~~ PVC pipe" are all typical examples of revisions that indicate that design data has been replaced with "as-built" information. All other data is as designed and has not been field verified.

Date: 11-18-22

Certified by: DOUGLAS EUGENE UBBEN, JR.

Title: PROFESSIONAL ENGINEER

Firm: PHILIPS ENGINEERING, INC.



PHILIPS ENGINEERING, INC.
1270 N. Winchester
Olathe, Kansas 66061
(913) 393-1155
Fax (913) 393-1165
www.philipsengineering.com

PLANNING
ENGINEERING
IMPLEMENTATION



SANITARY SEWER PLAN & PROFILE

DOWNTOWN LEE'S SUMMIT APARTMENTS
114 S.E. DOUGLAS STREET
LEE'S SUMMIT, JACKSON COUNTY, MISSOURI

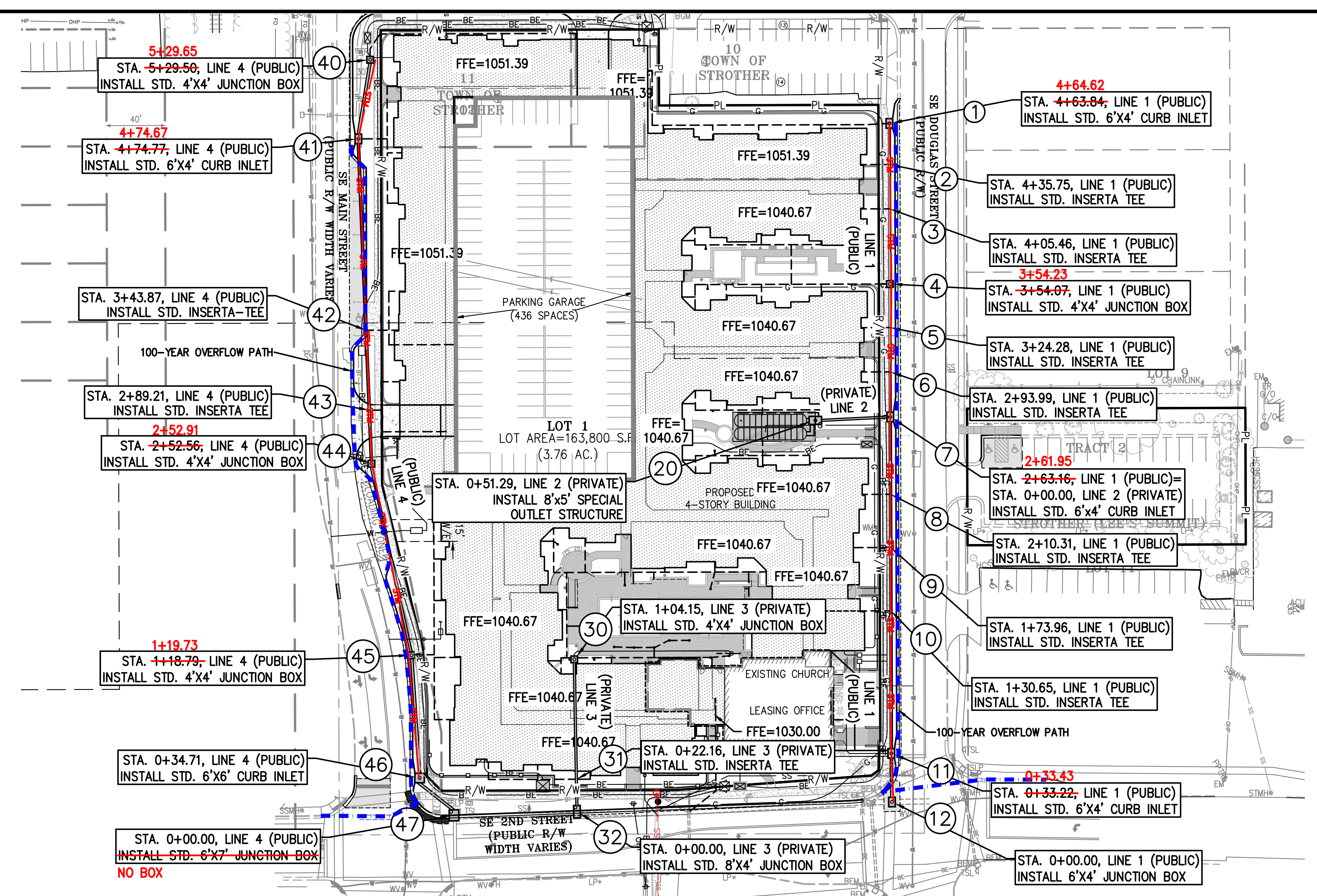
PROJECT NO.	171125	No.	Date	Revisions:	By	App.
DATE: 02-27-20	DRAWN: SNH	1.	5-14-2020	E.S.I. #3	KAD	DEU
CHECKED: DAF	APPROVED: DEU	4.	7-7-2020	E.S.I. #4	KAD	DEU
CORPORATE AUTHORIZATION						
LAND SURVEYING - LS-82						
ENGINEERING - E-361						
CERTIFICATE OF AUTHORIZATION						
LAND SURVEYING-200701028						
ENGINEERING-200700209						

SHEET

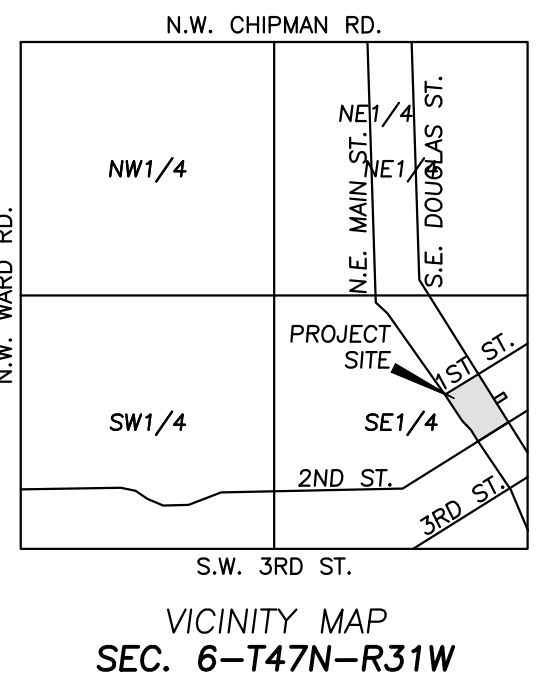
2

**Accepted
Record Drawings**

These plans have been reviewed for accuracy and are accepted for basic conformance to the approved construction drawings.



CONTRACTOR TO REFER TO SEPARATE SET OF PLANS FOR PRIVATE STORM SEWER INSTALLATION.



LEGEND

100-YEAR OVERFLOW PATH

FLOOD NOTE:

THE SUBJECT PROPERTY LIES WITHIN ZONE X, DEFINED AS AREAS DETERMINED TO BE OUTSIDE THE 0.2% ANNUAL CHANCE FLOODPLAIN, AS SHOWN ON THE FLOOD INSURANCE RATE MAP PREPARED BY THE FEDERAL EMERGENCY MANAGEMENT AGENCY FOR THE CITY OF LEE'S SUMMIT, COMMUNITY NO. 290174, JACKSON COUNTY, MISSOURI, MAP NO. 29095C0417G, AND DATED JANUARY 20, 2017.



Know what's below.
Call before you dig.

RECORD DRAWING

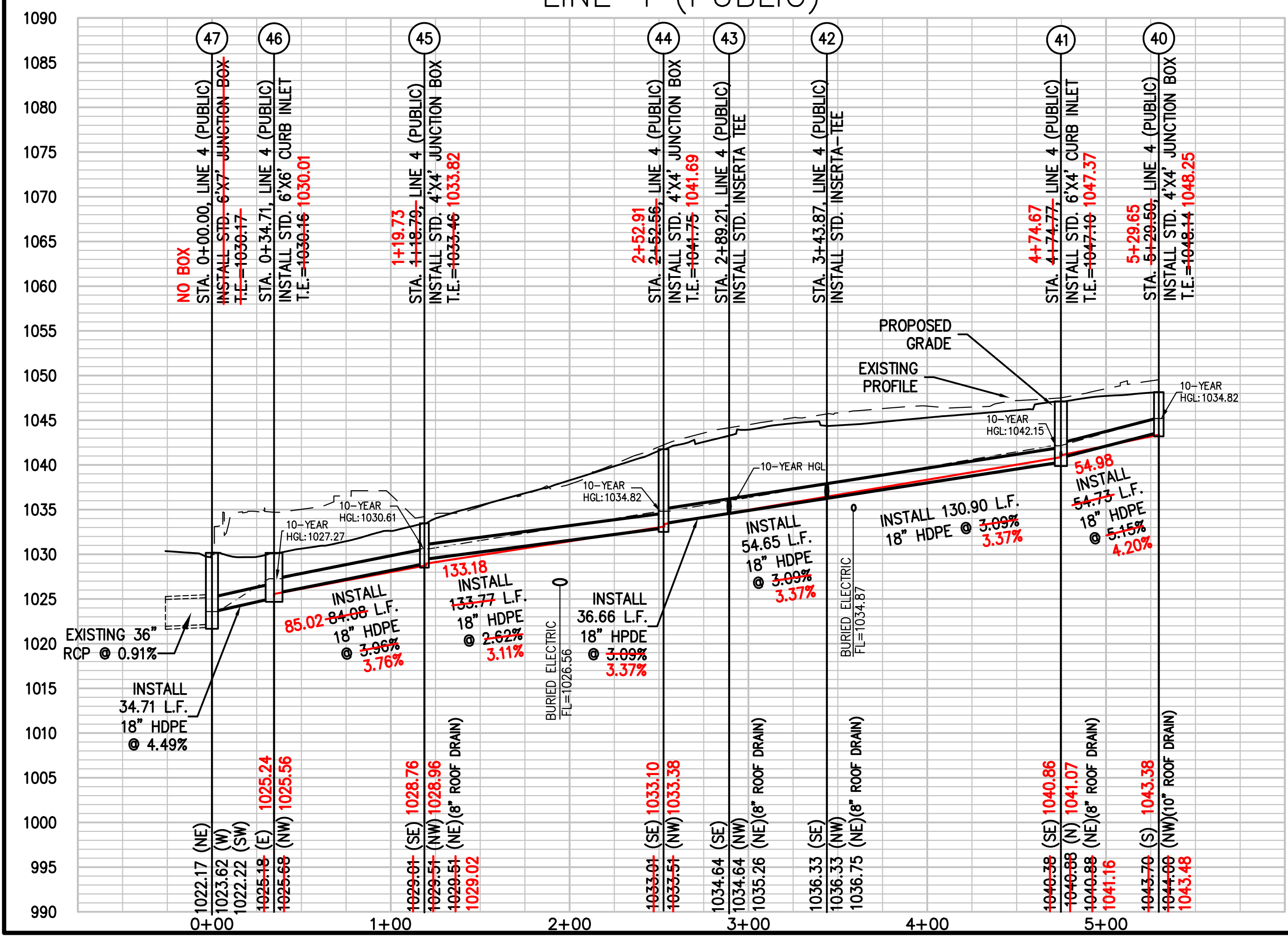
The information provided on this drawing conforms to construction records; it is not intended for construction, implementation or recording purposes; and it is solely based on information obtained by my firm.

"100.00 100.10", "1.00% 1.15% slope", or "8-inch HDPE PVC pipe" are all typical examples of revisions that indicate that design data has been replaced with "as-built" information. All other data is as designed and has not been field verified.

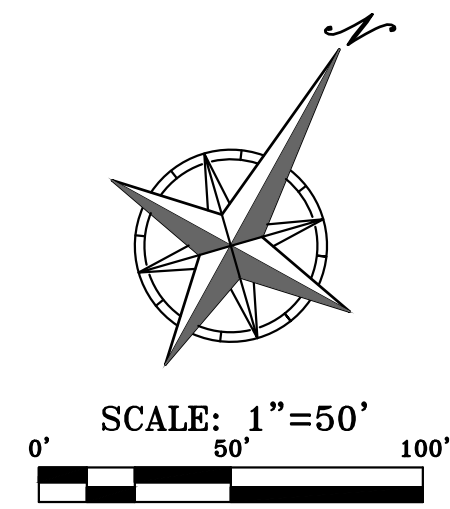
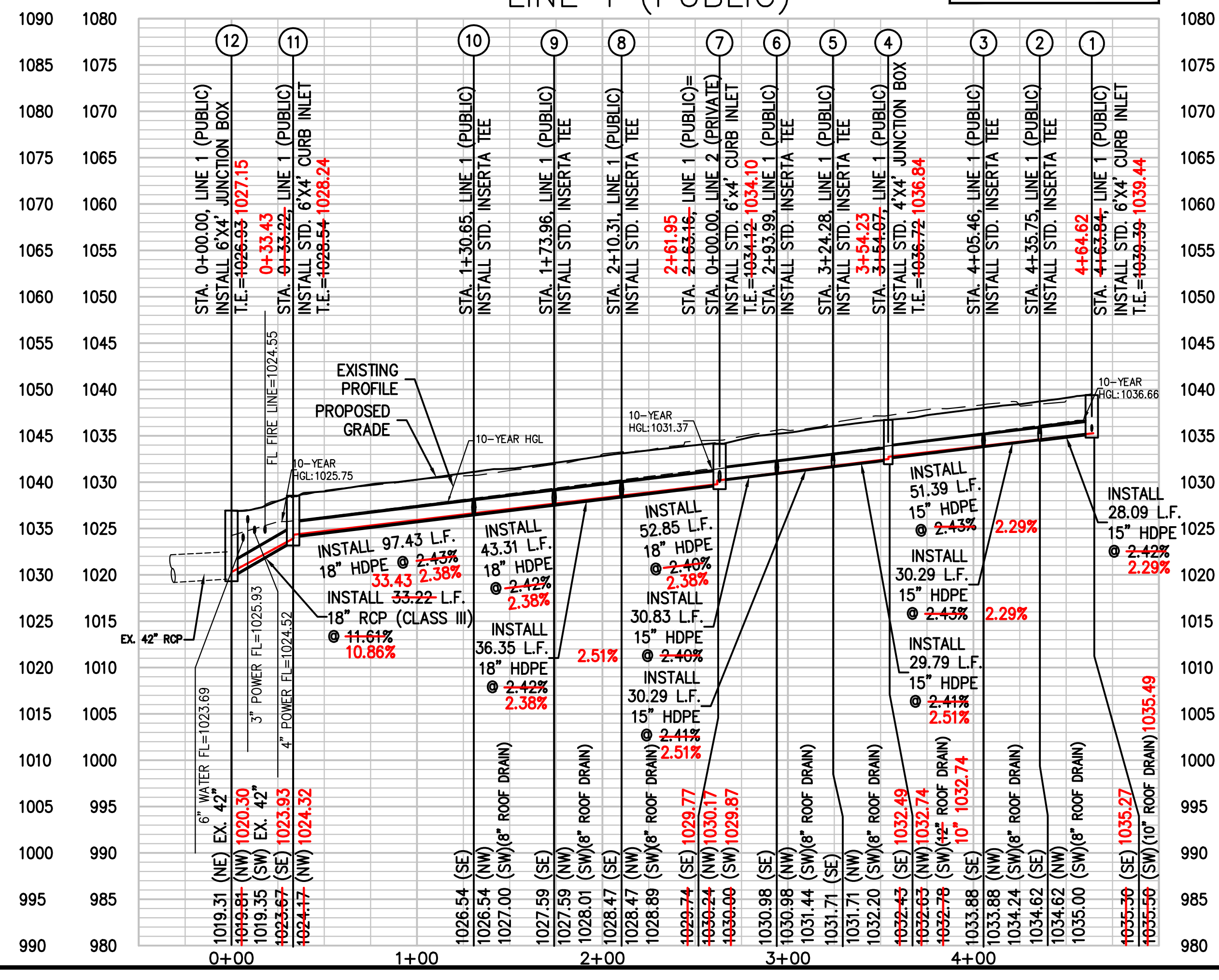
Date: 11-18-22
Certified by: DOUGLAS EUGENE UBBEN, JR.
Title: PROFESSIONAL ENGINEER
Firm: PHELPS ENGINEERING, INC.

SCALE: 1"=50' HORIZ.
1"=10' VERT.

LINE 4 (PUBLIC)



LINE 1 (PUBLIC)



STORM SEWER PLAN & PROFILE
DOWNTOWN LEE'S SUMMIT APARTMENTS
114 S.E. DOUGLAS STREET
LEE'S SUMMIT, JACKSON COUNTY, MISSOURI



PHELPS ENGINEERING, INC.
1200 N. Winchester
Olathe, Kansas 66061
(913) 393-1155
Fax: (913) 393-1165
www.phelpsengineering.com



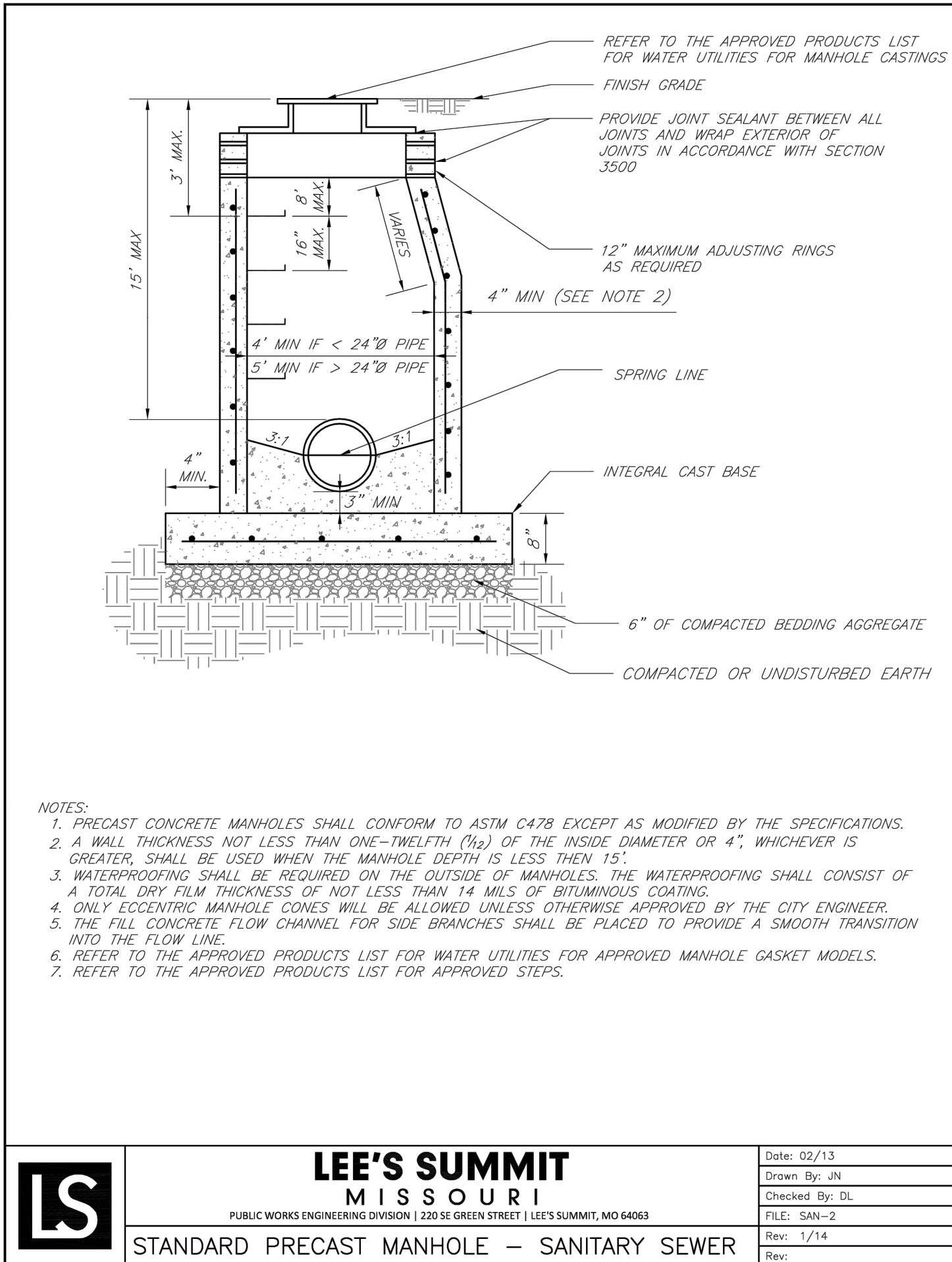
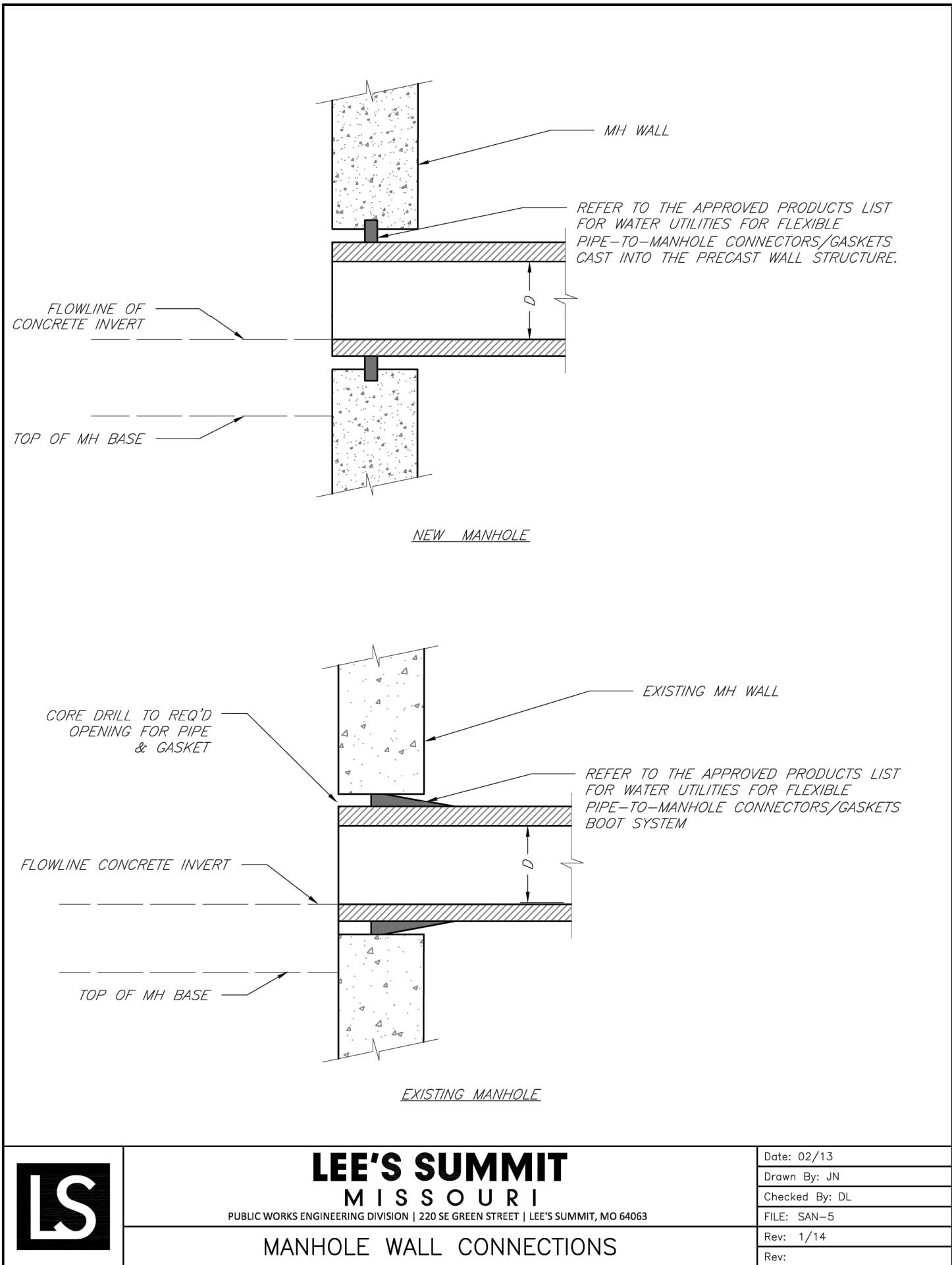
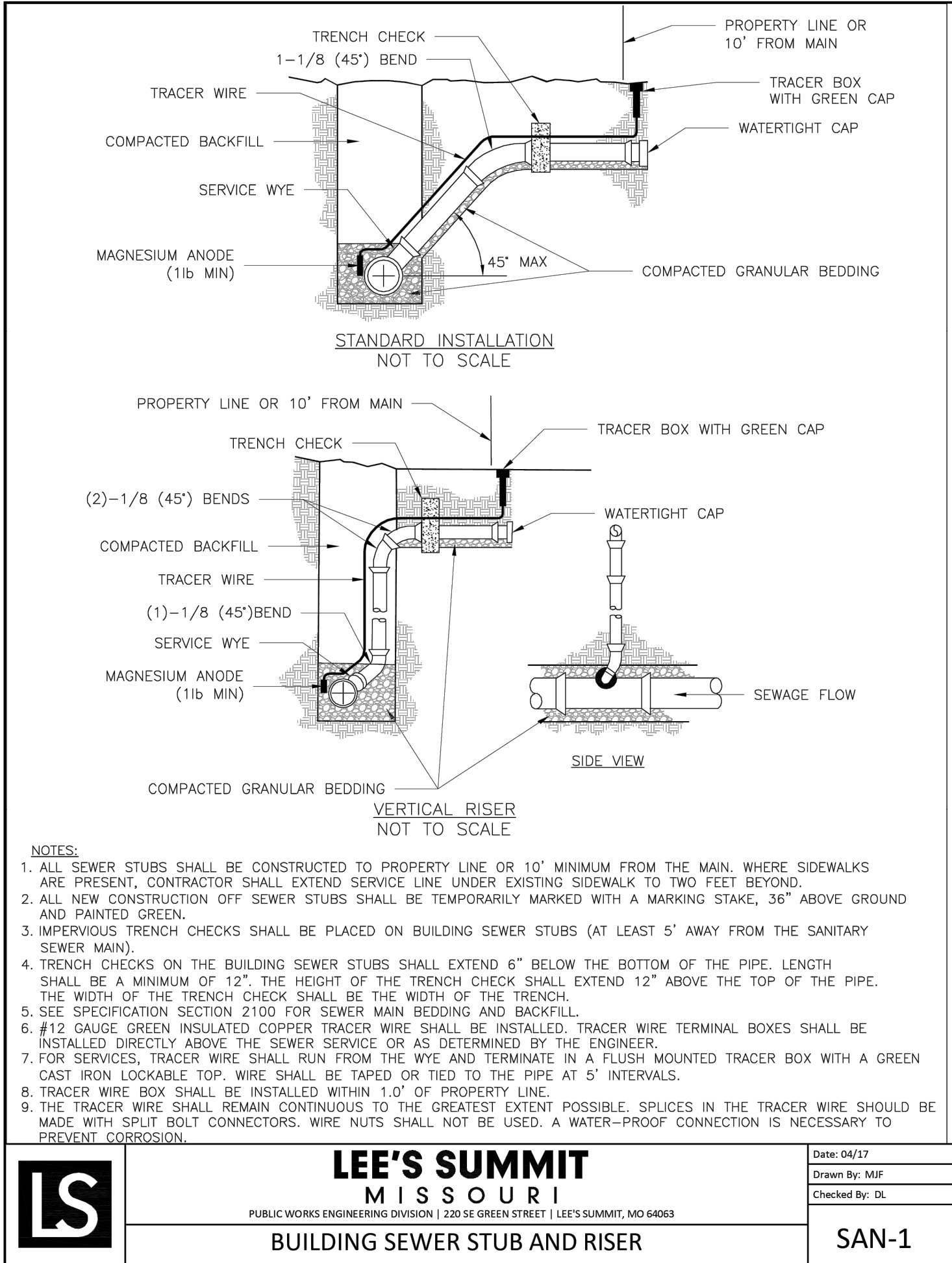
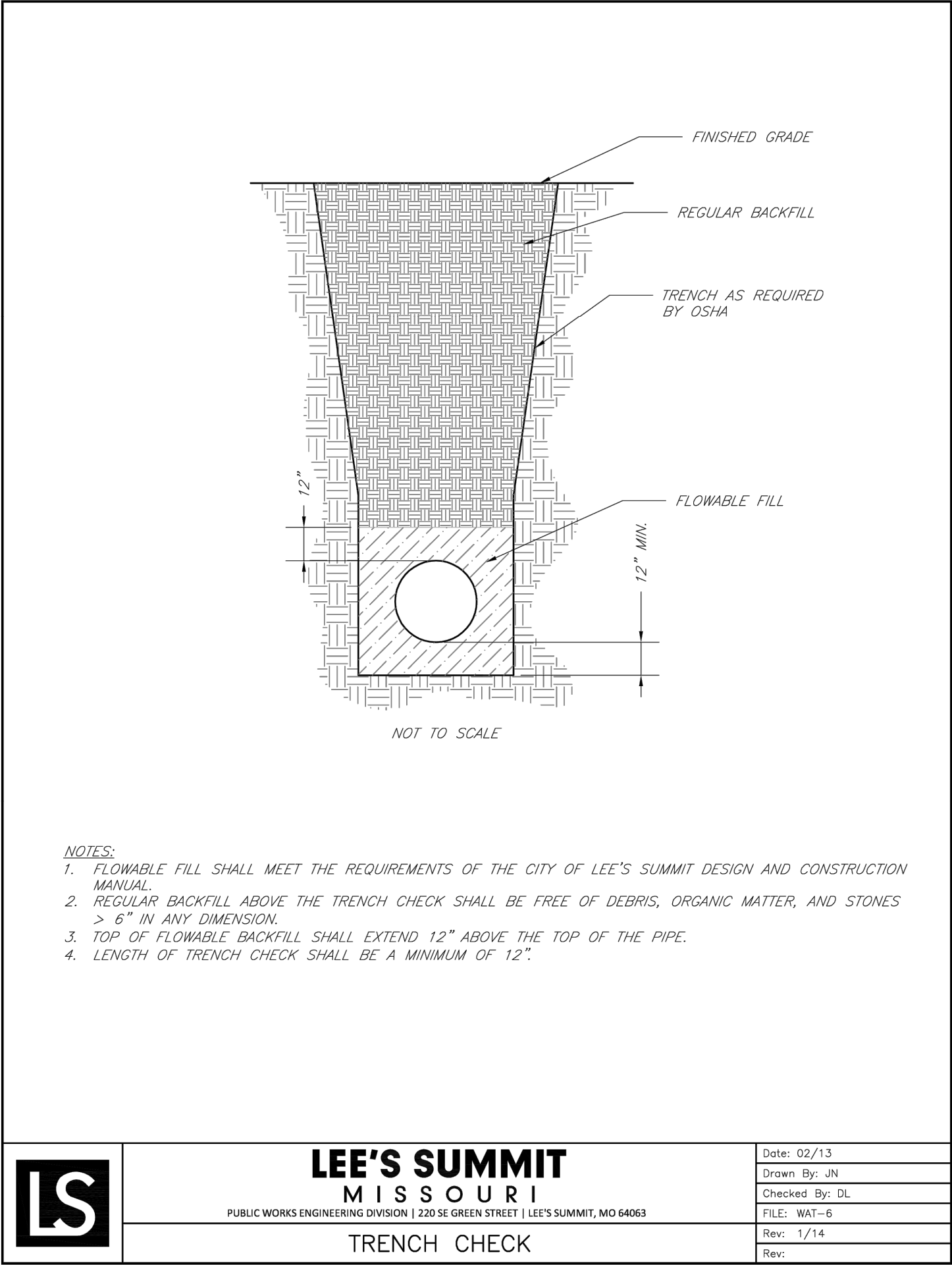
PROJECT NO.	171125	No.	Date	Revisions:	By	App.
DATE: 02-27-20	DRAWN: SNH	1.	5-14-2020	E.S.I. #3	KAD	DEU
CHECKED: DAF	APPROVED: DEU	4.	7-7-2020	E.S.I. #4	KAD	DEU
CERTIFICATE OF AUTHORIZATION						
LAND SURVEYING - LS-82						
ENGINEERING - E-36						
CERTIFICATE OF AUTHORIZATION						
LAND SURVEYING - LS-82						
ENGINEERING - E-36						

SHEET

3

Accepted
Record Drawings

These plans have been reviewed for accuracy and are accepted for basic conformance to the approved construction drawings.



RECORD DRAWING

The information provided on this drawing conforms to construction records; it is not intended for construction, implementation or recording purposes; and it is solely based on information obtained by my firm.

~~"100.00 100.10"~~, ~~"1.00% 1.15% slope"~~, or "8-inch ~~HDP~~ PVC pipe" are all typical examples of revisions that indicate that design data has been replaced with "as-built" information. All other data is as designed and has not been field verified.

Date: 11-18-22

Certified by: DOUGLAS EUGENE UBBEN, JR.

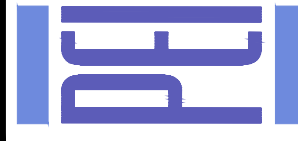
Title: PROFESSIONAL ENGINEER

Firm: PHELPS ENGINEERING, INC.



PHELPS ENGINEERING, INC.
1270 N. Winchester
Olathe, Kansas 66061
(913) 393-1155
Fax (913) 393-1165
www.phelpsenr.com

PLANNING
ENGINEERING
IMPLEMENTATION



SANITARY SEWER DETAILS
DOWNTOWN LEE'S SUMMIT APARTMENTS
114 S.E. DOUGLAS STREET
LEE'S SUMMIT, JACKSON COUNTY, MISSOURI

PROJECT NO.	171125	No.	Date	Revisions:	By	App.
DATE: 02-27-20	DRAWN: SNH	1.	5-14-2020	E.S.I. #3	KAD	DEU
CHECKED: DAF	APPROVED: DEU	4.	7-7-2020	E.S.I. #4	KAD	DEU
CORPORATE OF AUTHORIZATION						
LAND SURVEYING - LS-82						
ENGINEERING - E-361						
CERTIFICATE OF AUTHORIZATION						
LAND SURVEYING-200701028						
ENGINEERING-200700039						

SHEET

4

