

1

2

3

4

5

6

7

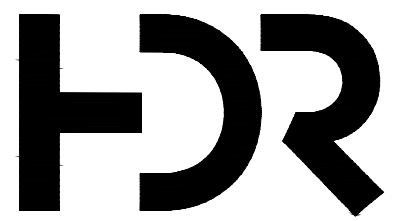
8

DOWNTOWN LEE'S SUMMIT APARTMENTS

PUBLIC SANITARY SEWER IMPROVEMENTS

CITY OF LEE'S SUMMIT, MO

JACKSON COUNTY



HDR Engineering, Inc.

MO. STATE CERTIFICATE OF
AUTHORITY #000856

10450 HOLMES ROAD, SUITE 600
KANSAS CITY, MO 64131
PH: 816-360-2700
FX: 816-360-2777

INDEX OF DRAWINGS

- 01 COVER SHEET
- 02 PUBLIC SEWER LINE A – PLAN & PROFILE
- 03 PUBLIC SEWER LINE B – PLAN & PROFILE
- 04 MISCELLANEOUS DETAILS
- 05 MISCELLANEOUS DETAILS
- 06 MISCELLANEOUS DETAILS

Accepted
Record Drawings

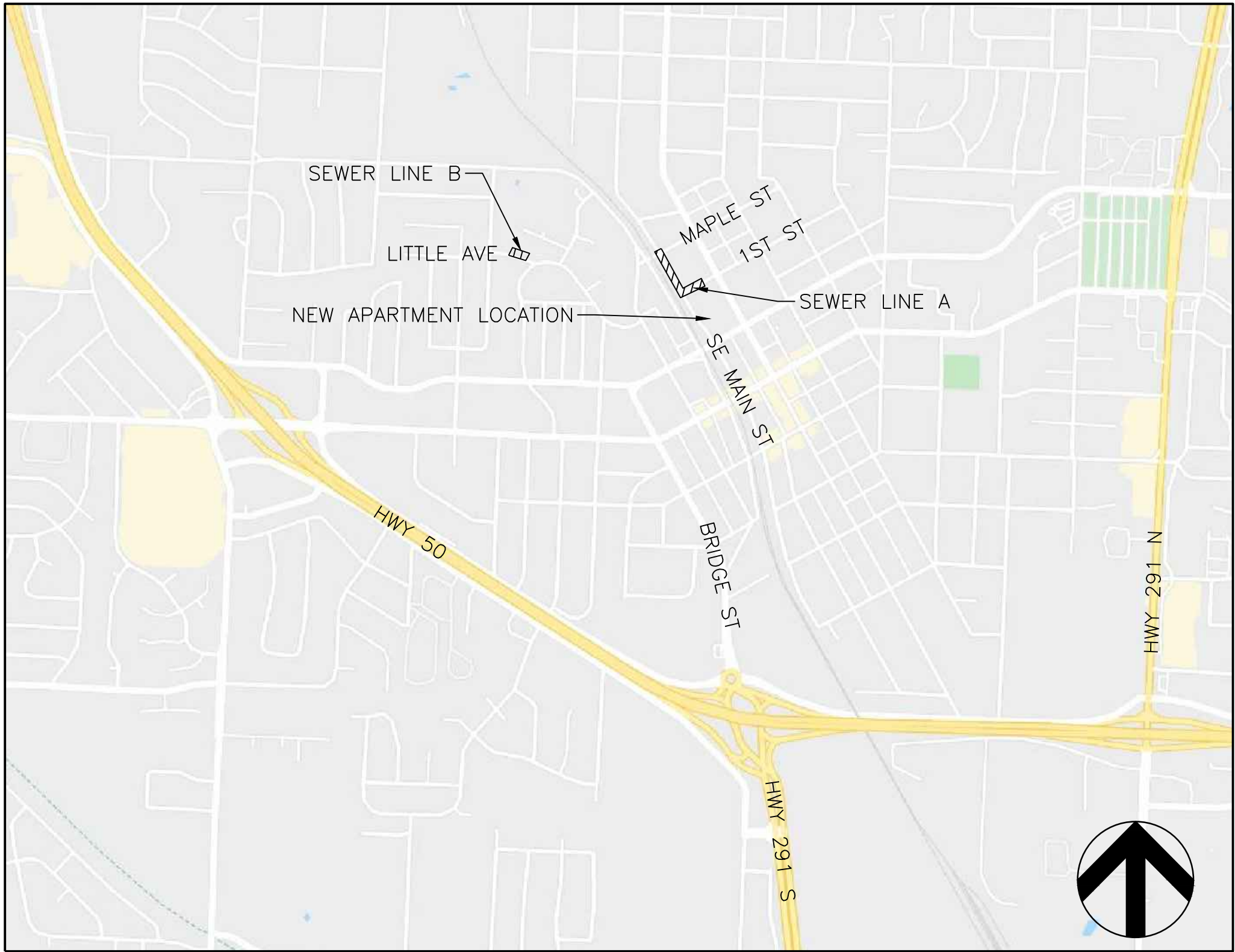
These plans have been reviewed for
accuracy and are accepted for basic
conformance to the approved
construction drawings.

RECORD DRAWING

The information provided on this drawing conforms to construction
records; it is not intended for construction, implementation or
recording purposes; and it is solely based on information provided
by others.
"400-00 100.10", "4-00% 1.15% slope", or "8-inch HDPE PVC
pipe" are all typical examples of revisions that indicate that design
data has been replaced with "as-built" information. All other data
is as designed and has not been field verified.
Date: 12/14/2022
Certified by: Mitchell Wiebelhaus
Title: Professional Engineer
Firm: HDR Engineering Inc.

UTILITIES

ELECTRIC – KCP&L	816-471-5275
TELEPHONE – AT&T	816-325-5607
GAS – SPIRE	816-756-5252
CABLE – CHARTER SPECTRUM	816-358-8833
WATER – LEE'S SUMMIT WATER UTILITIES	816-969-1900
SEWER – LEE'S SUMMIT PUBLIC WORKS	816-969-1800

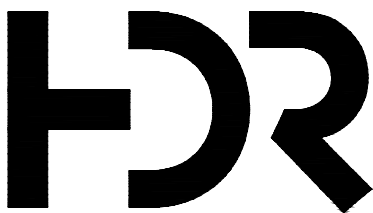


SITE LOCATION MAP
N.T.S.

APRIL 2020
10186909



UTILITY NOTES:
VISUAL INDICATIONS OF UTILITIES ARE AS SHOWN. UNDERGROUND LOCATIONS SHOWN,
AS FURNISHED BY THEIR LESSORS, ARE APPROXIMATE AND SHOULD BE VERIFIED IN
THE FIELD AT THE TIME OF CONSTRUCTION. FOR ACTUAL FIELD LOCATIONS OF
UNDERGROUND UTILITIES IN MISSOURI, CALL 811, or 1-800-344-7483. BE IT NOTED
THAT ONLY PART OF THE UNDERGROUND TELEPHONE LINES WERE MARKED FOR THE
SITE SURVEY AND THESE PLANS AS EVIDENCED BY TELEPHONE PEDESTALS WITHOUT
CORRESPONDING UNDERGROUND CABLE. THE CONTRACTOR IS RESPONSIBLE TO LOCATE
AND PROTECT THESE LINES THE SAME AS IF THEY HAD BEEN LOCATED AND SHOWN
ON THESE PLANS.



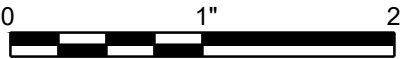
HDR
MISSOURI CERTIFICATE OF
AUTHORITY #: 000856
10450 HOLMES ROAD, SUITE 600
KANSAS CITY, MO 64131
816-360-2700

ISSUE	DATE	DESCRIPTION
4	12-13-22	AS-BUILT PLANS
3	04-14-20	FINAL PLANS
2	03-23-20	CITY RESUBMITTAL
1	12-31-19	CITY REVIEW

PROJECT MANAGER	
CIVIL	M. WIEBELHAUS
PROJECT NUMBER	
10186909	

DRAWINGS
CONFORMING TO
CONSTRUCTION
RECORDS
12/13/2022

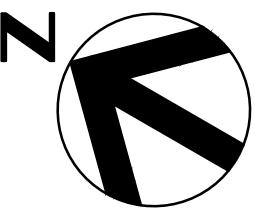
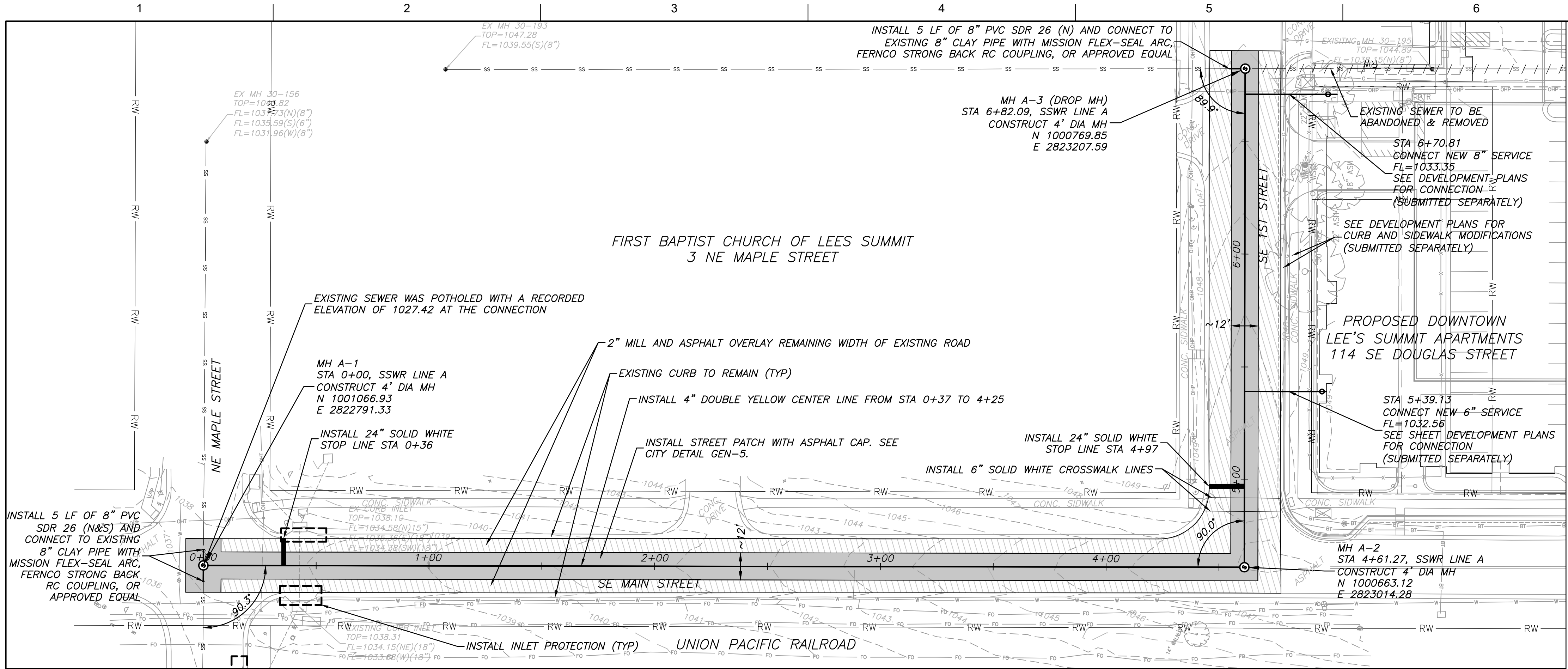
DOWNTOWN LEE'S SUMMIT APARTMENTS
PUBLIC SANITARY SEWER IMPROVEMENTS
114 S.E. DOUGLAS STREET
LEE'S SUMMIT, MISSOURI



COVER SHEET

FILENAME	01-Cover.dwg
SCALE	AS NOTED

SHEET
01

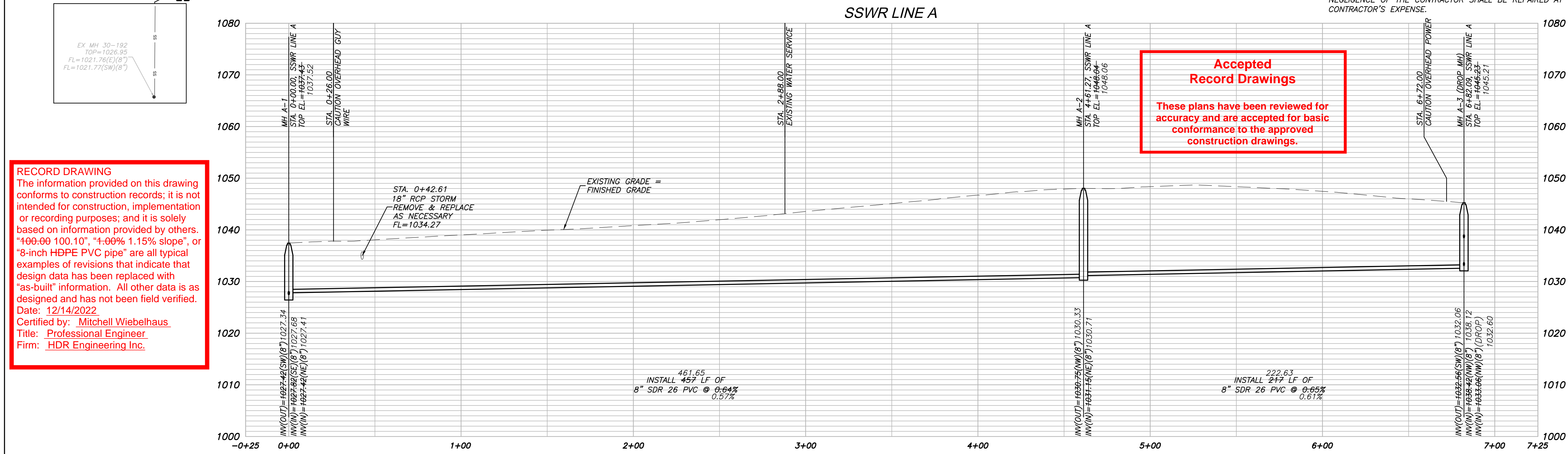


HORZ. SCALE: 1"=30'
VERT. SCALE: 1"=10'

- GENERAL NOTES:**
- THE CONSTRUCTION COVERED BY THESE PLANS SHALL CONFORM TO ALL APPLICABLE STANDARDS AND SPECIFICATIONS OF THE PUBLIC WORKS DEPARTMENT OF THE CITY OF LEE'S SUMMIT, THE KANSAS CITY METROPOLITAN CHAPTER OF THE AMERICAN PUBLIC WORKS ASSOCIATION (APWA), AND THE MISSOURI DEPARTMENT OF NATURAL RESOURCES (MDNR).
 - ALL WORKMANSHIP AND MATERIALS SHALL BE SUBJECT TO THE INSPECTION AND APPROVAL OF THE CITY OF LEE'S SUMMIT, MISSOURI.
 - THE UTILITY LOCATIONS SHOWN ON THESE DRAWINGS WERE DEVELOPED FROM INFORMATION AVAILABLE. IT IS THE CONTRACTOR'S RESPONSIBILITY TO VERIFY THE LOCATION OF ALL UTILITIES (WHETHER SHOWN OR NOT) AND PROTECT SAID UTILITIES FROM ANY DAMAGE.
 - THE CONTRACTOR SHALL ADHERE TO THE PROVISIONS OF THE STATE BILL NUMBER 583, 78TH GENERAL ASSEMBLY OF THE STATE OF MISSOURI. THE BILL REQUIRES THAT ANY PERSON OR FIRM DOING EXCAVATION ON PUBLIC RIGHT-OF-WAY DO SO ONLY AFTER GIVING NOTICE TO, AND OBTAINING INFORMATION FROM, UTILITY COMPANIES. STATE LAW REQUIRES 48 HOURS ADVANCE NOTICE.

THE CONTRACTOR MAY ALSO UTILIZE THE FOLLOWING TOLL FREE PHONE NUMBER PROVIDED BY "MISSOURI ONE CALL SYSTEM, INC.": 811. THIS PHONE NUMBER IS APPLICABLE ANYWHERE WITHIN THE STATE OF MISSOURI.

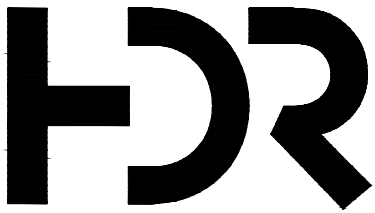
PRIOR TO COMMENCEMENT OF WORK, THE CONTRACTOR SHALL NOTIFY ALL THOSE COMPANIES WHICH HAVE FACILITIES IN THE NEAR VICINITY OF THE CONSTRUCTION TO BE PERFORMED.
 - IT SHALL BE THE RESPONSIBILITY OF THE CONTRACTOR TO PROTECT THE ADJACENT AND DOWNSTREAM PROPERTY OWNERS FROM STORM WATER, SILT AND EROSION DURING ALL PHASES OF CONSTRUCTION, AND SHALL KEEP THE STREETS CLEAN OF MUD AND DEBRIS.
 - LOCAL ACCESS TO ALL PROPERTIES SHALL BE MAINTAINED AT ALL TIMES.
 - CONTRACTOR SHALL BE RESPONSIBLE FOR SUPPORTING ANY WATER MAINS OR GAS MAINS HORIZONTALLY AND VERTICALLY WHEN CROSSING UNDER THE EXISTING MAIN(S). IF APPLICABLE THE CONTRACTOR WILL BE RESPONSIBLE FOR SUPPORTING ANY WATER MAIN OR GAS MAIN LATERALLY, WHILE WORKING ALONGSIDE ANY MAIN(S).
 - CONTRACTOR MUST COORDINATE THE BRACING OF ALL UTILITY POLES PRIOR TO ANY EXCAVATION WITHIN 10 FEET OF A POLE.
 - ALL UTILITY AND SANITARY SERVICE LINES SHALL BE KEPT IN SERVICE AND PROTECTED DURING CONSTRUCTION OPERATIONS. IT SHALL BE THE CONTRACTOR'S RESPONSIBILITY TO LOCATE ALL EXISTING SERVICE LINES, AND NOTIFY THE CITY'S REPRESENTATIVE OF ANY CONFLICTS IMMEDIATELY. THE CONTRACTOR SHALL BE HELD RESPONSIBLE FOR CONTACTING ALL UTILITY COMPANIES FOR FIELD LOCATION OF ALL UNDERGROUND UTILITY LINES PRIOR TO ANY EXCAVATION. UTILITIES DAMAGED THROUGH THE NEGLIGENCE OF THE CONTRACTOR SHALL BE REPAIRED AT THE CONTRACTOR'S EXPENSE.



RECORD DRAWING
The information provided on this drawing conforms to construction records; it is not intended for construction, implementation or recording purposes; and it is solely based on information provided by others. "400.00 100.10", "4.00% 1.15% slope", or "8-inch HDPE PVC pipe" are all typical examples of revisions that indicate that design data has been replaced with "as-built" information. All other data is as designed and has not been field verified.
Date: 12/14/2022
Certified by: Mitchell Wiebelhaus
Title: Professional Engineer
Firm: HDR Engineering Inc.

**Accepted
Record Drawings**

These plans have been reviewed for accuracy and are accepted for basic conformance to the approved construction drawings.



HDR
MISSOURI CERTIFICATE OF
AUTHORITY #: 000856

10450 HOLMES ROAD, SUITE 600
KANSAS CITY, MO 64131
816-360-2700

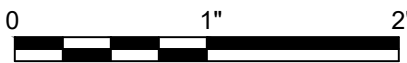
ISSUE	DATE	DESCRIPTION
4	12-13-22	AS-BUILT PLANS
3	04-14-20	FINAL PLANS
2	03-23-20	CITY RESUBMITTAL
1	12-31-19	CITY REVIEW

PROJECT MANAGER	
CIVIL	M. WIEBELHAUS
PROJECT NUMBER	
10186909	

DRAWINGS
CONFORMING TO
CONSTRUCTION
RECORDS
12/13/2022

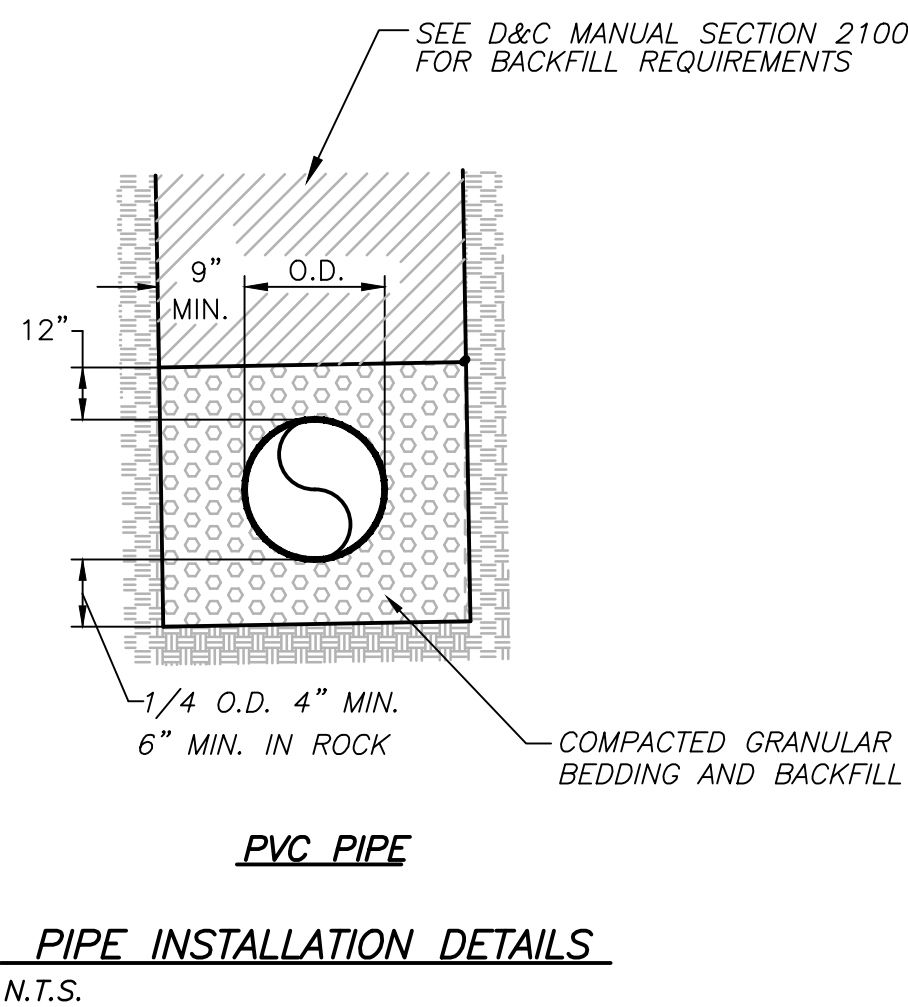
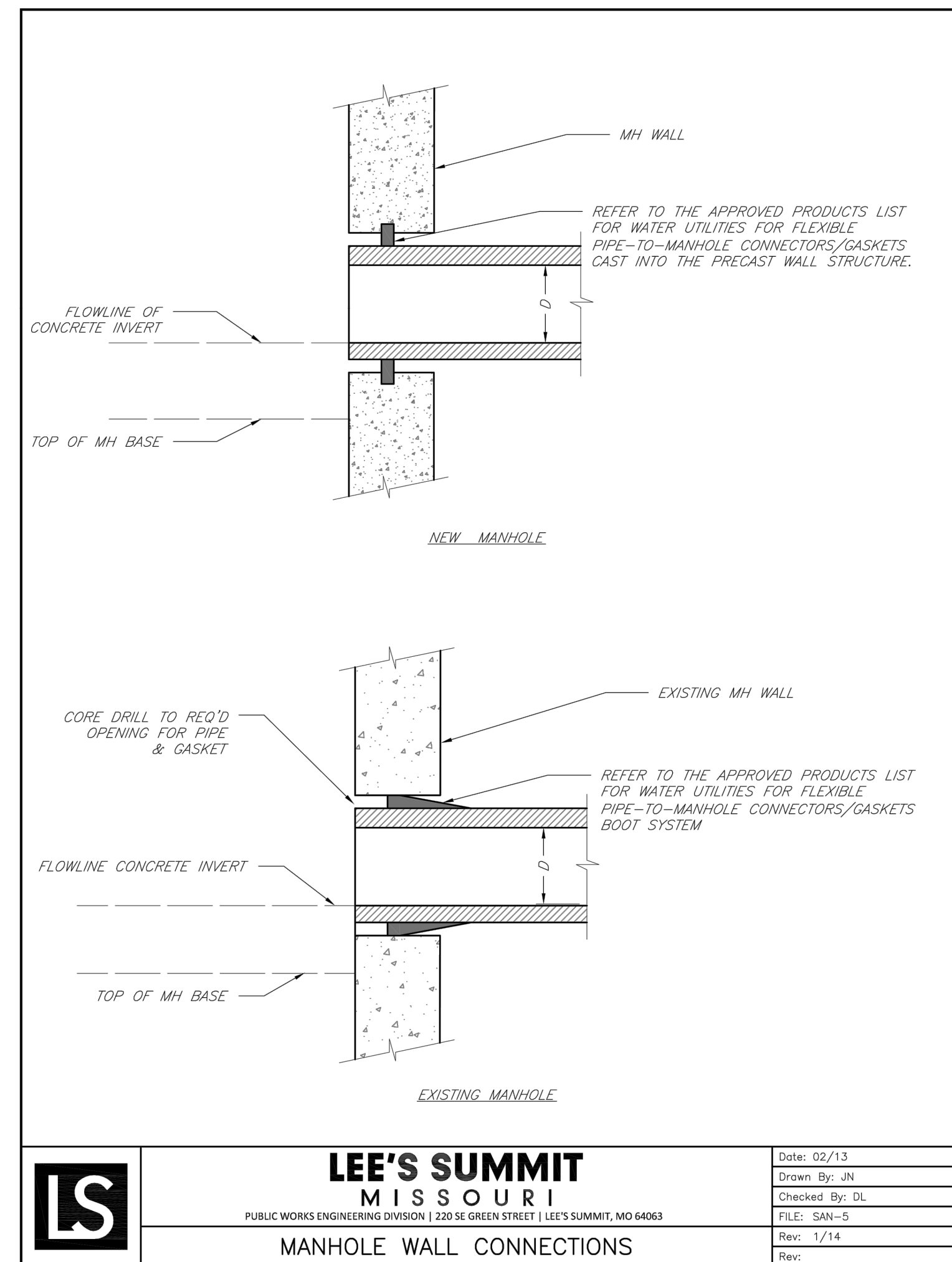
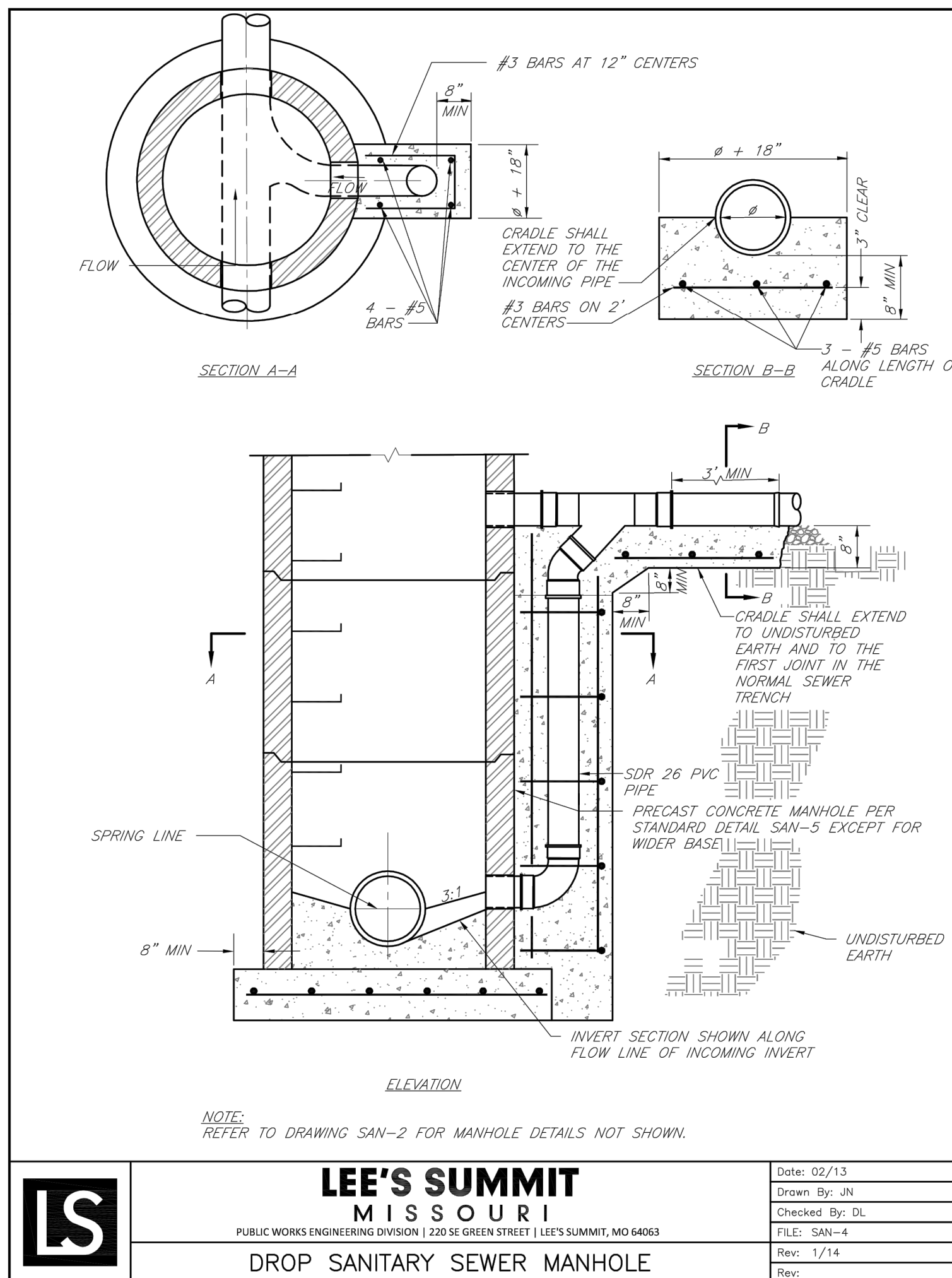
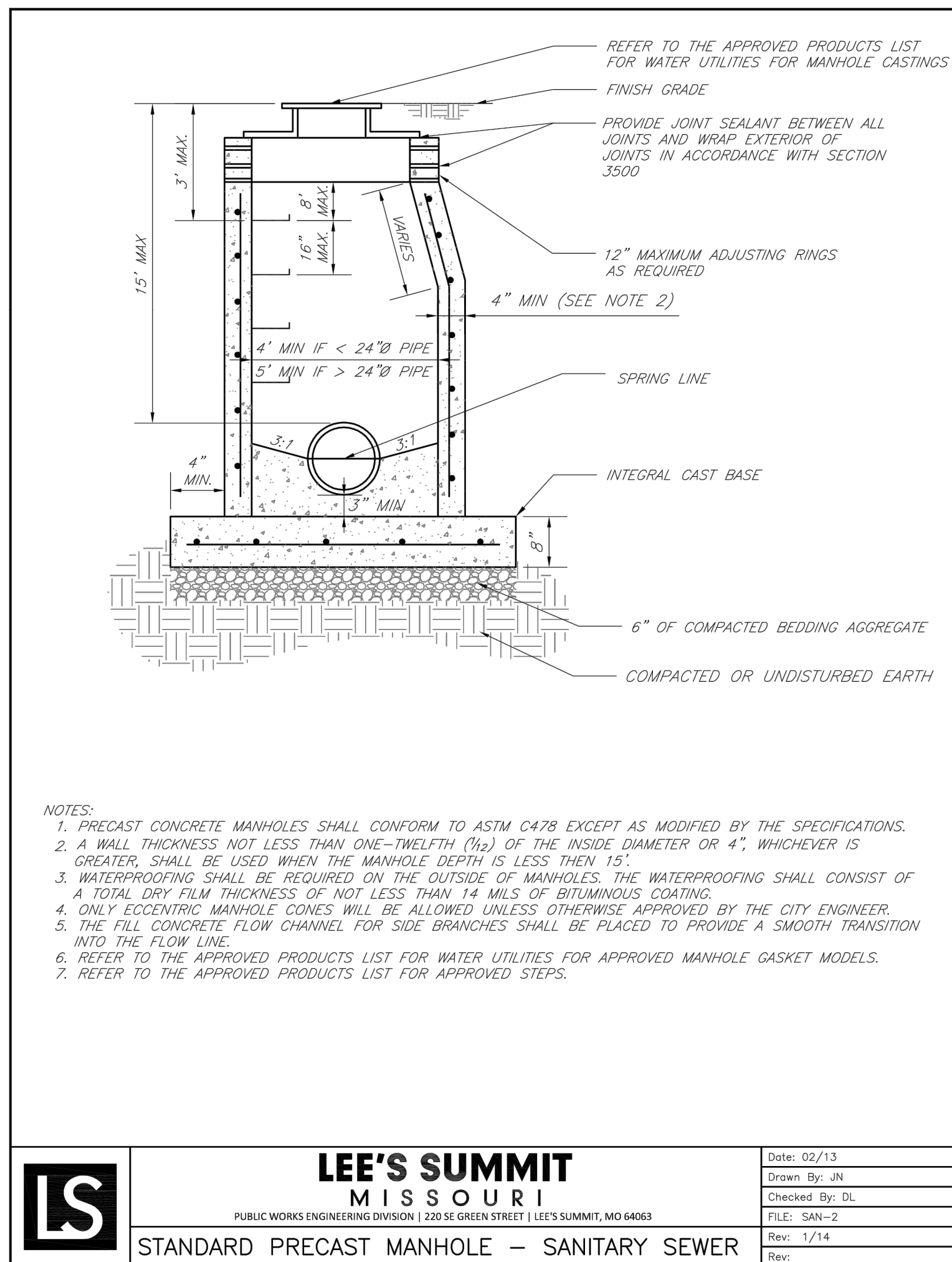
**DOWNTOWN LEE'S SUMMIT APARTMENTS
PUBLIC SANITARY SEWER IMPROVEMENTS
114 S.E. DOUGLAS STREET
LEE'S SUMMIT, MISSOURI**

**PUBLIC SEWER LINE A
PLAN & PROFILE**



FILENAME | 02-P&P.dwg
SCALE | AS NOTED

SHEET
02



**Accepted
Record Drawings**

These plans have been reviewed for accuracy and are accepted for basic conformance to the approved construction drawings.

RECORD DRAWING

The information provided on this drawing conforms to construction records; it is not intended for construction, implementation or recording purposes; and it is solely based on information provided by others.

"400-00 100.10", "4-00% 1.15% slope", or "8-inch HDPE PVC pipe" are all typical examples of revisions that indicate that design data has been replaced with "as-built" information. All other data is as designed and has not been field verified.

Date: 12/14/2022

Certified by: Mitchell Wiebelhaus

Title: Professional Engineer

Firm: HDR Engineering Inc.



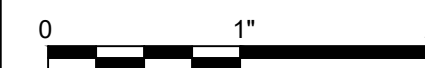
HDR
MISSOURI CERTIFICATE OF
AUTHORITY #: 000856
10450 HOLMES ROAD, SUITE 600
KANSAS CITY, MO 64131
816-360-2700

PROJECT MANAGER			CIVIL		M. WIEBELHAUS	
4	12-13-22	AS-BUILT PLANS				
3	04-14-20	FINAL PLANS				
2	03-23-20	CITY RESUBMITTAL				
1	12-31-19	CITY REVIEW				
ISSUE	DATE	DESCRIPTION	PROJECT NUMBER		10186909	

DRAWINGS
CONFORMING TO
CONSTRUCTION
RECORDS
12/13/2022

**DOWNTOWN LEE'S SUMMIT APARTMENTS
PUBLIC SANITARY SEWER IMPROVEMENTS
114 S.E. DOUGLAS STREET
LEE'S SUMMIT, MISSOURI**

MISCELLANEOUS DETAILS

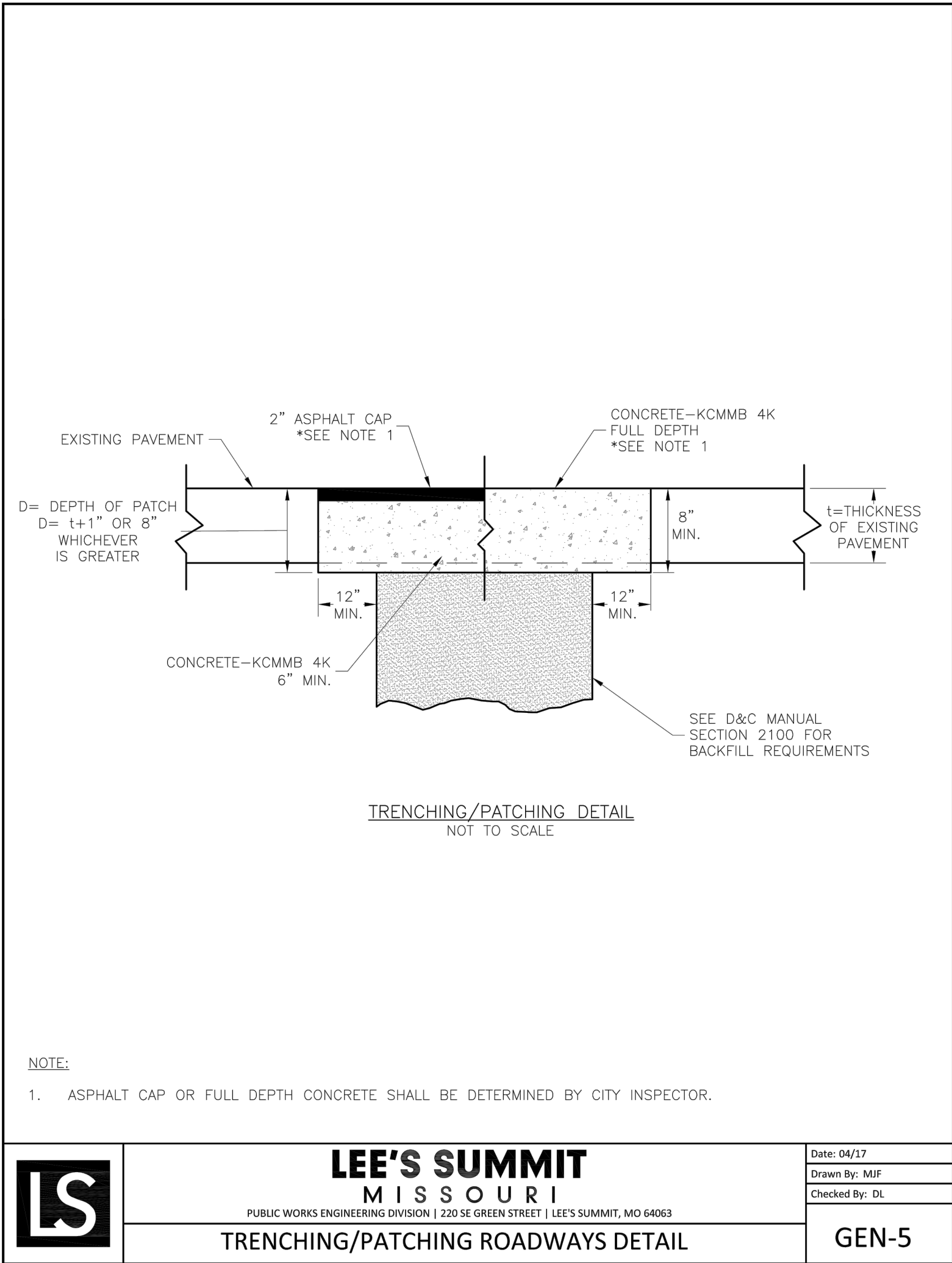
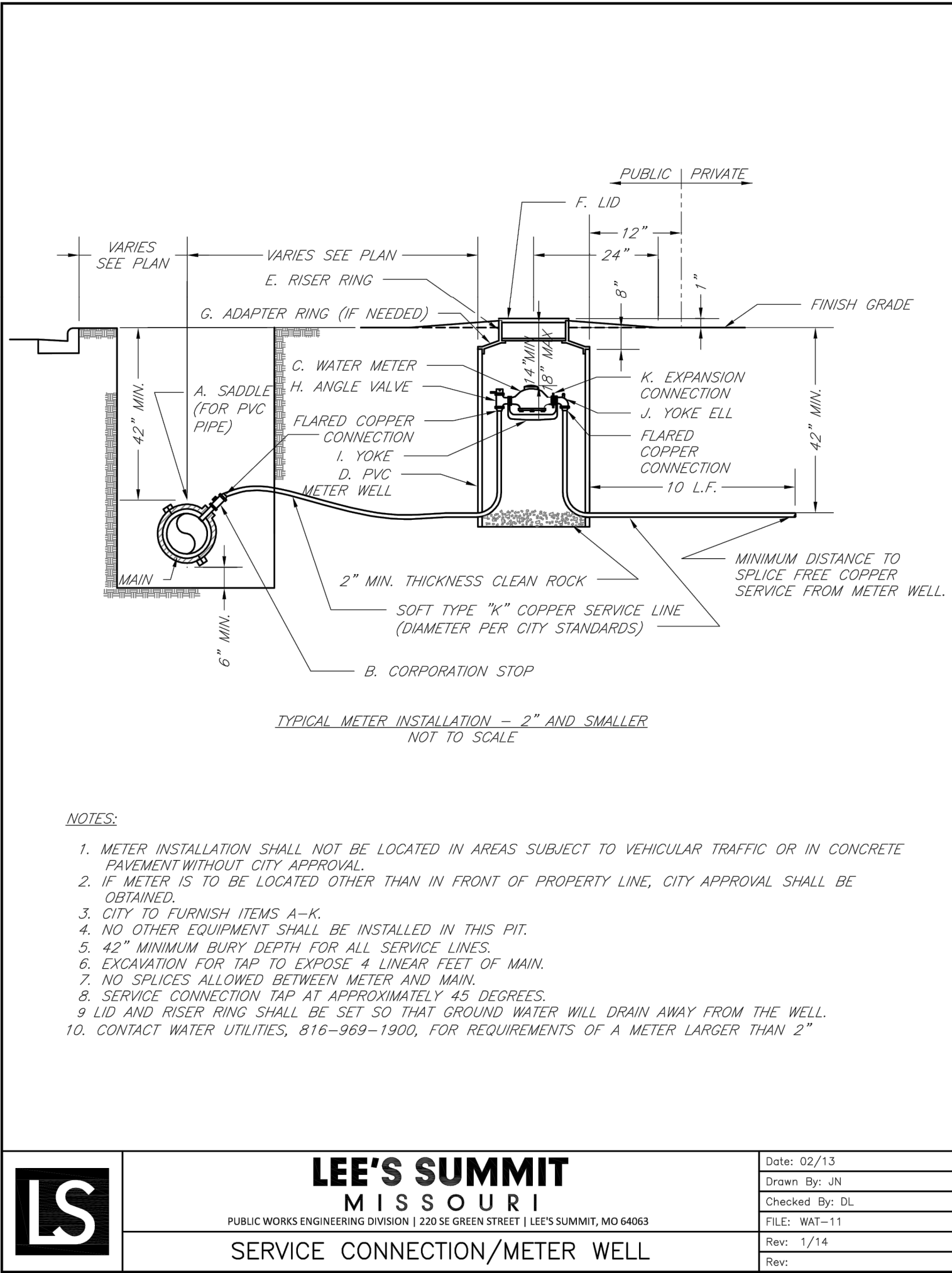
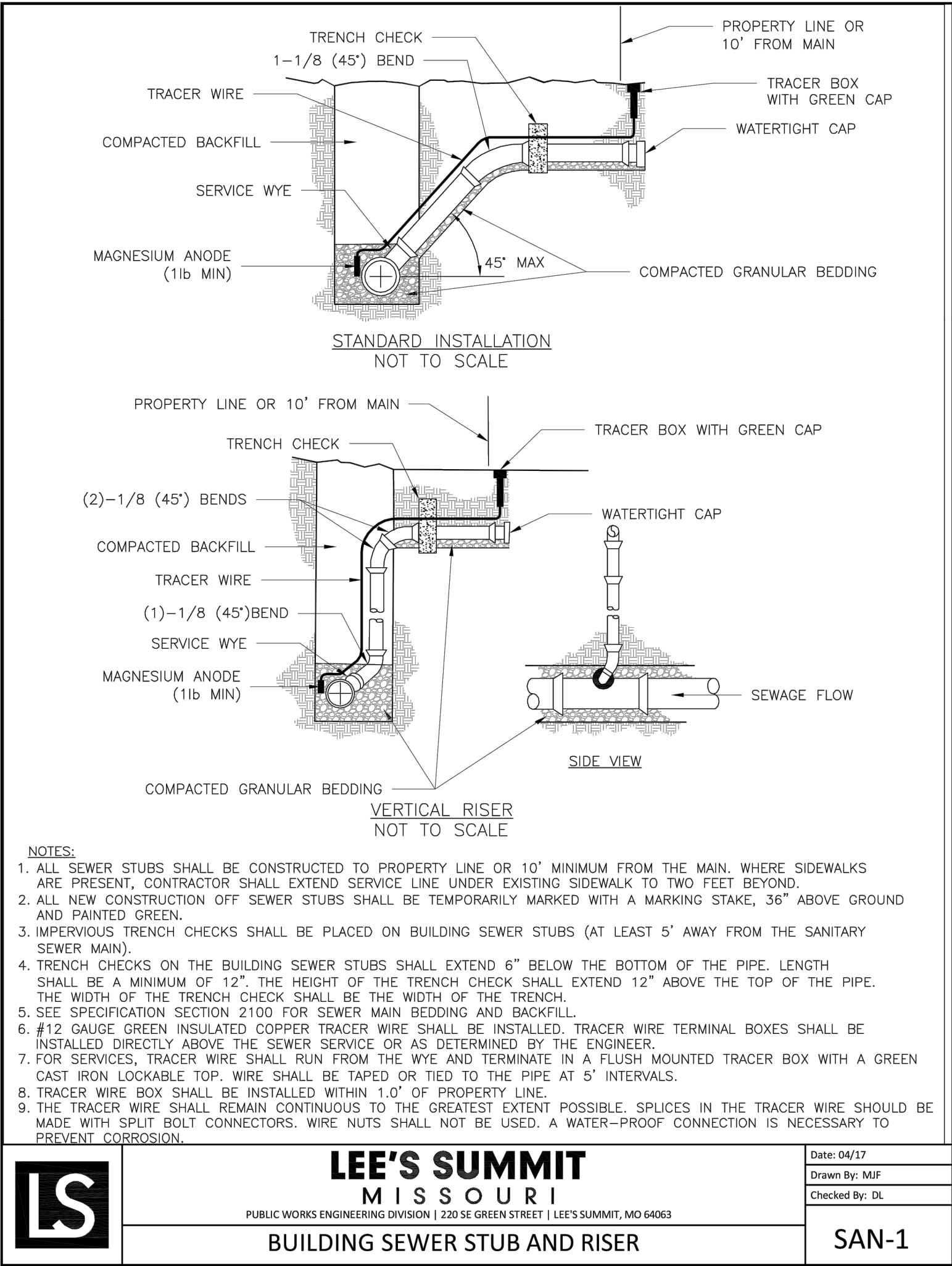


FILENAME | 04-Details.dwg
SCALE | AS NOTED

SHEET

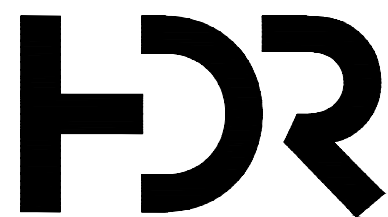
04

RECORD DRAWING
The information provided on this drawing conforms to construction records; it is not intended for construction, implementation or recording purposes; and it is solely based on information provided by others.
"400-00 100.10", "4.00% 1.15% slope", or "8-inch HDPE PVC pipe" are all typical examples of revisions that indicate that design data has been replaced with "as-built" information. All other data is as designed and has not been field verified.
Date: 12/14/2022
Certified by: Mitchell Wiebelhaus
Title: Professional Engineer
Firm: HDR Engineering Inc.



Accepted
Record Drawings

These plans have been reviewed for accuracy and are accepted for basic conformance to the approved construction drawings.



HDR
MISSOURI CERTIFICATE OF
AUTHORITY #: 000856
10450 HOLMES ROAD, SUITE 600
KANSAS CITY, MO 64131
816-360-2700

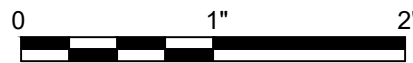
PROJECT MANAGER		
	CIVIL	M. WIEBELHAUS
4	12-13-22	AS-BUILT PLANS
3	04-14-20	FINAL PLANS
2	03-23-20	CITY RESUBMITTAL
1	12-31-19	CITY REVIEW
ISSUE	DATE	DESCRIPTION

PROJECT MANAGER	
CIVIL	M. WIEBELHAUS
PROJECT NUMBER	10186909

DRAWINGS
CONFORMING TO
CONSTRUCTION
RECORDS
12/13/2022

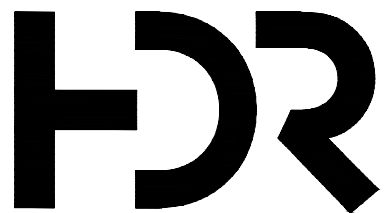
DOWNTOWN LEE'S SUMMIT APARTMENTS
PUBLIC SANITARY SEWER IMPROVEMENTS
114 S.E. DOUGLAS STREET
LEE'S SUMMIT, MISSOURI

MISCELLANEOUS DETAILS



FILENAME | 05-Details.dwg
SCALE | AS NOTED

SHEET
05



HDR
MISSOURI CERTIFICATE OF
AUTHORITY #: 000856

10450 HOLMES ROAD, SUITE 600
KANSAS CITY, MO 64131
816-360-2700

ISSUE	DATE	DESCRIPTION
4	12-13-22	AS-BUILT PLANS
3	04-14-20	FINAL PLANS
2	03-23-20	CITY RESUBMITTAL
1	12-31-19	CITY REVIEW

PROJECT MANAGER	
CIVIL	M. WIEBELHAUS
PROJECT NUMBER	10186909

DRAWINGS
CONFORMING TO
CONSTRUCTION
RECORDS
12/13/2022

DOWNTOWN LEE'S SUMMIT APARTMENTS
PUBLIC SANITARY SEWER IMPROVEMENTS
114 S.E. DOUGLAS STREET
LEE'S SUMMIT, MISSOURI

MISCELLANEOUS DETAILS

0 1" 2"
FILENAME 06-Details.dwg
SCALE AS NOTED

SHEET
06

RECORD DRAWING
The information provided on this drawing conforms to construction records; it is not intended for construction, implementation or recording purposes; and it is solely based on information provided by others.
"100.00 100.10", "1.00% 1.15% slope", or "8-inch HDPE PVC pipe" are all typical examples of revisions that indicate that design data has been replaced with "as-built" information. All other data is as designed and has not been field verified.
Date: 12/14/2022
Certified by: Mitchell Wiebelhaus
Title: Professional Engineer
Firm: HDR Engineering Inc.

Accepted
Record Drawings

These plans have been reviewed for accuracy and are accepted for basic conformance to the approved construction drawings.

