

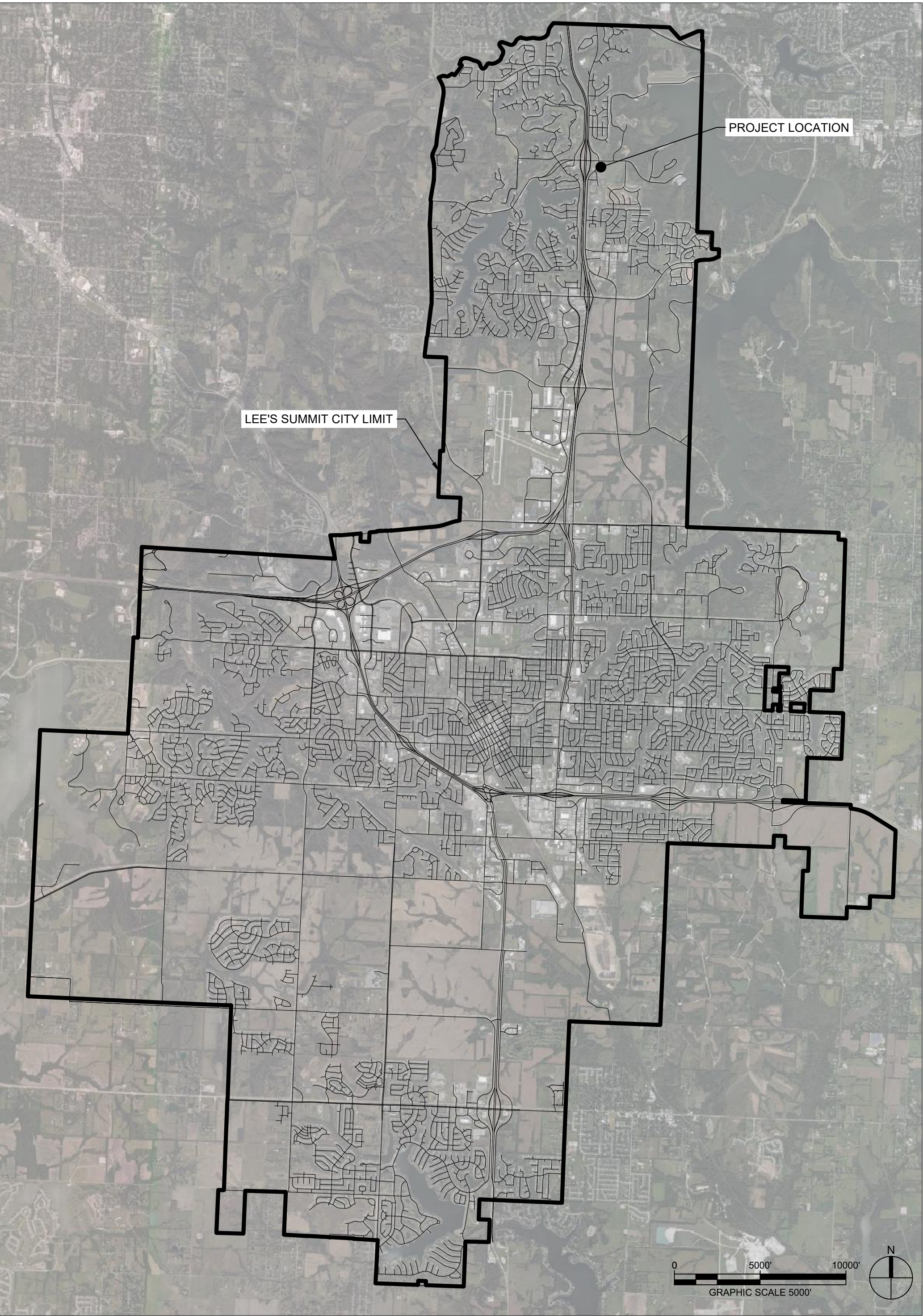
LEE'S SUMMIT FIRE STATION NO. 4
5031 NORTHEAST LAKEWOOD WAY
LEE'S SUMMIT, MISSOURI 64064
PUBLIC OFFSITE STORM SEWER

CONSULTANT:

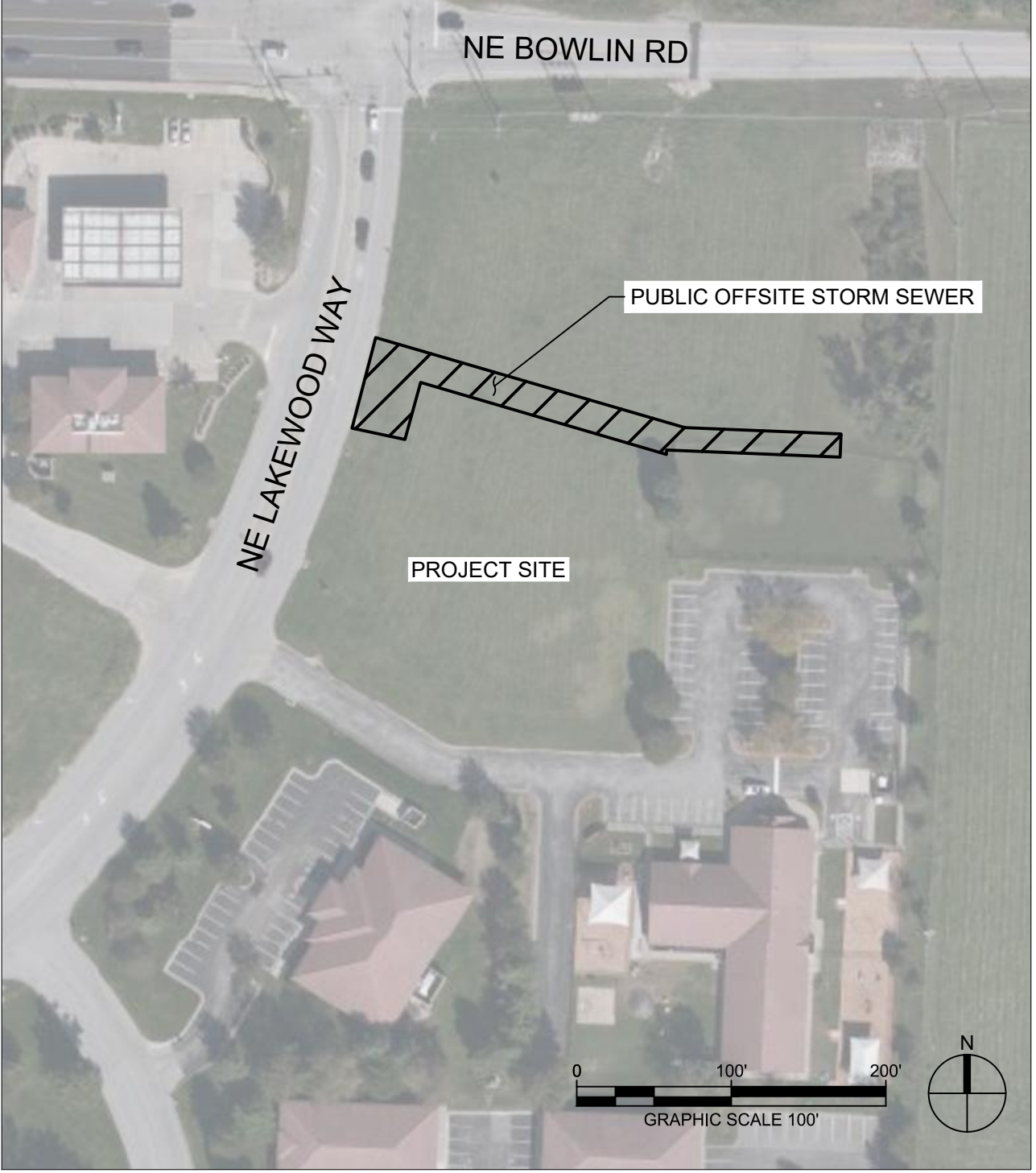


9229 WARD PKWY
KANSAS CITY, MISSOURI 64114
DERICK HOLMES
derick.holmes@glmv.com
T (816) 444-4200

VICINITY MAP



SITE LOCATION MAP



INDEX OF DRAWINGS

SHEET NO.	SHEET NAME
C-002	COVER SHEET
C-230	PUBLIC STORMWATER PROFILES
C-530	STORMWATER DETAILS
C-540	SANITARY SEWER DETAILS

RELEASED FOR
CONSTRUCTION
As Noted on Plans Review
Development Services Department
Lee's Summit, Missouri
12/16/2022

PL2022369
PRSUBD20226148



#	Description	Date
3	ASI 03	12.08.2022

ISSUED FOR
PERMITTING

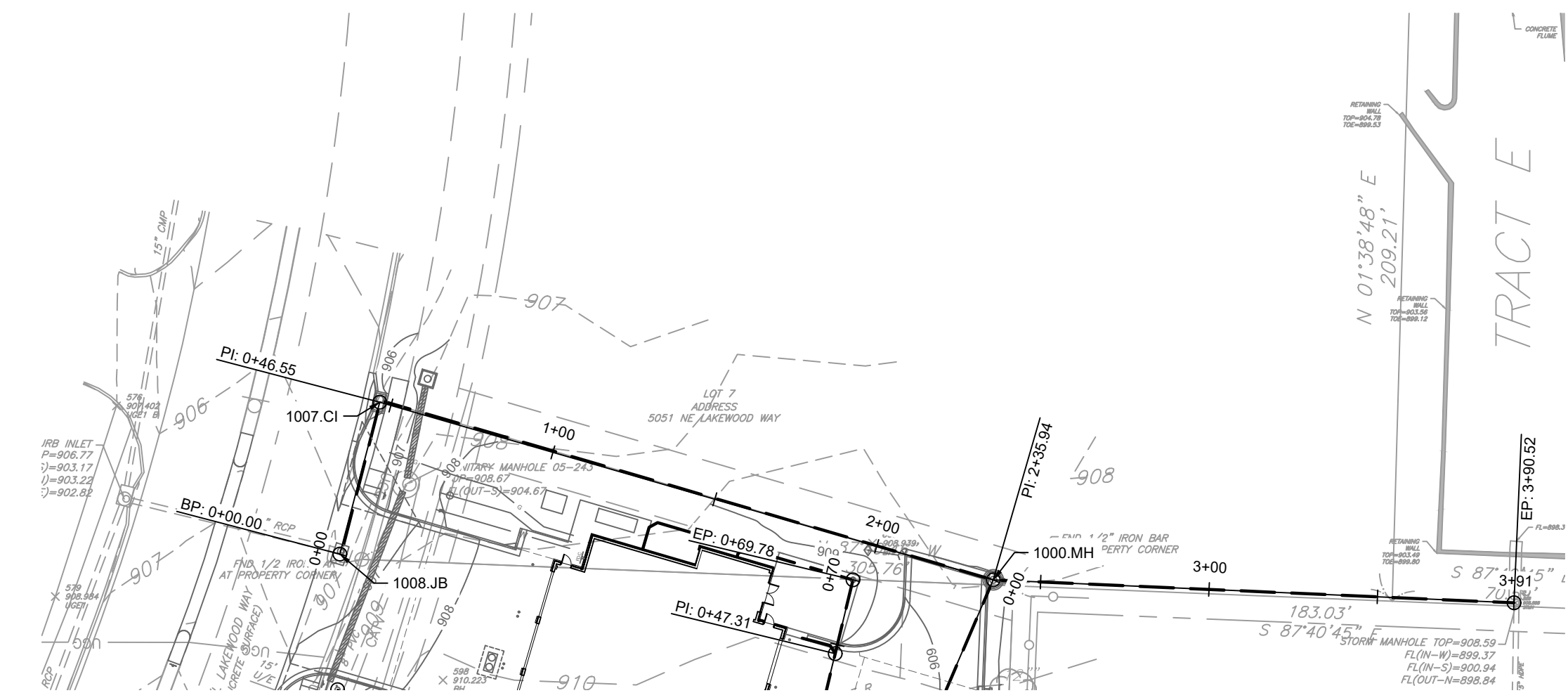
PROJECT NO: 18225R21001
DATE: 12.08.2022

COVER
SHEET

C-002

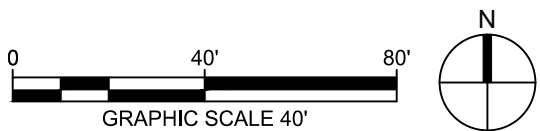
NEW SHEET

D

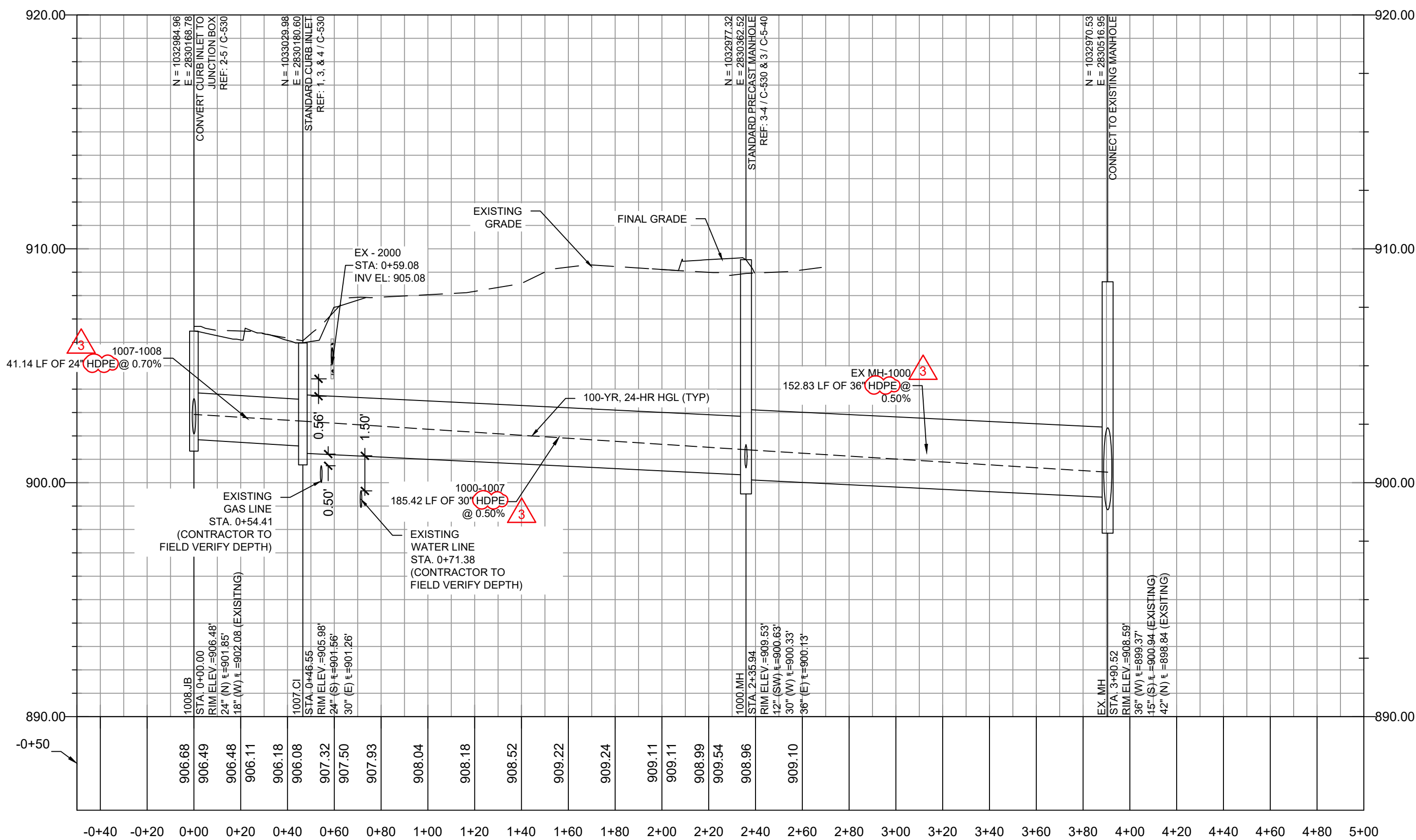


1 EX MH - 1008.JB PLAN

SCALE: 1"=40'



C



RELEASED FOR
CONSTRUCTION
As Noted on Plans Review
Development Services Department
Lee's Summit, Missouri
12/16/2022

2 EX MH - 1008.JB PROFILE

SCALE: HORIZONTAL 1"=40' SCALE: VERTICAL 1"=4'

A

100-YR, 24-HR STORM EVENT													
PIPE NAME	UPSTREAM NODE	DOWNSIDE NODE	LENGTH (FT)	INLET INVERT ELEVATION (FT)	OUTLET INVERT ELEVATION (FT)	SLOPE (%)	PIPE DIAMETER (INCHES)	MANINGG'S ROUGHNESS (N)	ENTRANCE LOSSES	EXIT/BEND LOSSES	PEAK FLOW (CFS)	TIME OF PEAK FLOW OCCURRENCE (DAYS HH:MM)	MAX FLOW VELOCITY (FT/SEC)
EX-MH-1000	1000.MH	EX-MH	152.83	900.13	899.37	0.50	36	0.012	0.50	0.90	14.11	0 12:05	6.17
1000-1007	1007.CI	1000.MH	185.42	901.26	900.33	0.50	30	0.012	0.50	0.80	12.23	0 12:05	6.05
1007-1008	1008.JB	1007.CI	41.14	901.85	901.56	0.70	24	0.012	0.50	0.80	11.50	0 12:00	6.74

100-YR, 24-HR STORM EVENT	
STRUCTURE NAME	MAX HGL ELEVATION (FT)
EX. MH	900.45
1000.MH	901.41
1007.CI	902.63
1008.JB	902.92



9229 WARD PARKWAY
SUITE # 210
KANSAS CITY, MO 64114
TEL: (816) 444-4200
FAX: (316) 265-5646
www.glmv.com

GLMV ARCHITECTURE, INC.
MISSOURI STATE CERTIFICATE OF AUTHORITY
#00008

CIVIL ENGINEER & LANDSCAPE ARCH.
GLMV ARCHITECTURE, INC.
MISSOURI CIVIL COA #2018033898
MISSOURI LANDSCAPE COA #000008
9229 WARD PARKWAY, SUITE # 210
KANSAS CITY, MO 64114
TEL: (816) 444-4200

STRUCTURAL ENGINEER
LEIGH + O'KANE
MISSOURI COA #001644
250 NE MURBERRY, SUITE 201
LEE'S SUMMIT, MO, 64086
(816) 444-3144 PHONE


MECH. ELEC. & PLUMBING ENGINEERS
HOSS & BROWN ENGINEERS
MISSOURI COA #01022
15902 MIDLAND DRIVE
SHAWNEE, KS 66217
(913) 362-9090 PHONE

SECURITY & IT ENGINEERS
HENDERSON ENGINEERS
MISSOURI COA # 000556
1601 MAIN STREET, SUITE 300
KANSAS CITY, MO 64108
(816) 663-8700 PHONE

FIRE STATION #4
CITY OF LEE'S SUMMIT

5031 NORTHEAST LAKEWOOD WAY
LEE'S SUMMIT, MISSOURI 64064

100% CONSTRUCTION DOCUMENT DRAWINGS



DERICK M. HOLMES
NUMBER
PE-2022005196
2022-12-07

DERICK HOLMES - CIVIL ENGINEER
MOR PE-2022005196

The Professional Engineers and Architectural Engineers and related to this sheet applies only to the material and items shown on this sheet. It is not to be copied or used in any way without the express written consent of GLMV Architecture, Inc.

PROJECT NO: 18225R21001

DATE: 10.19.2022

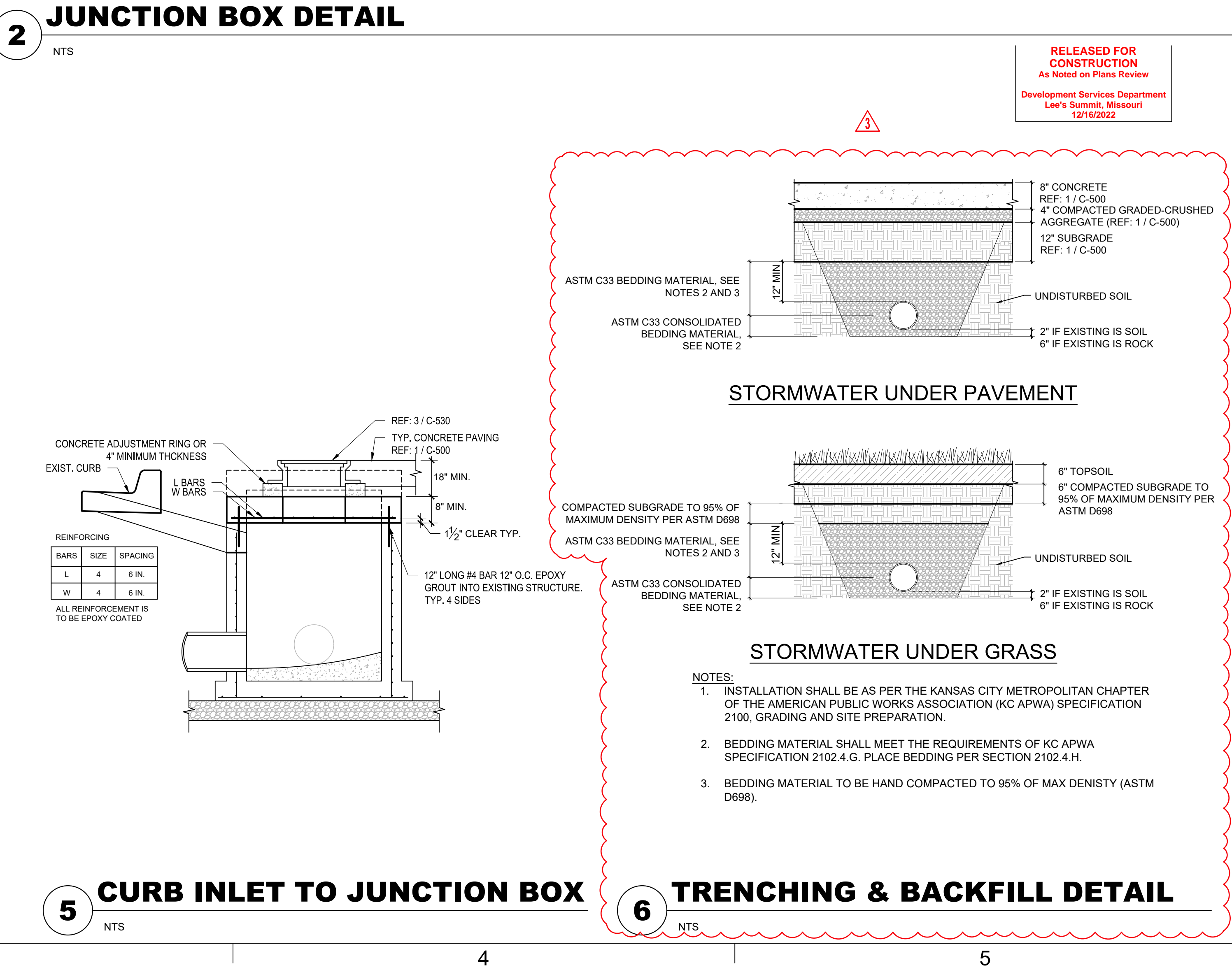
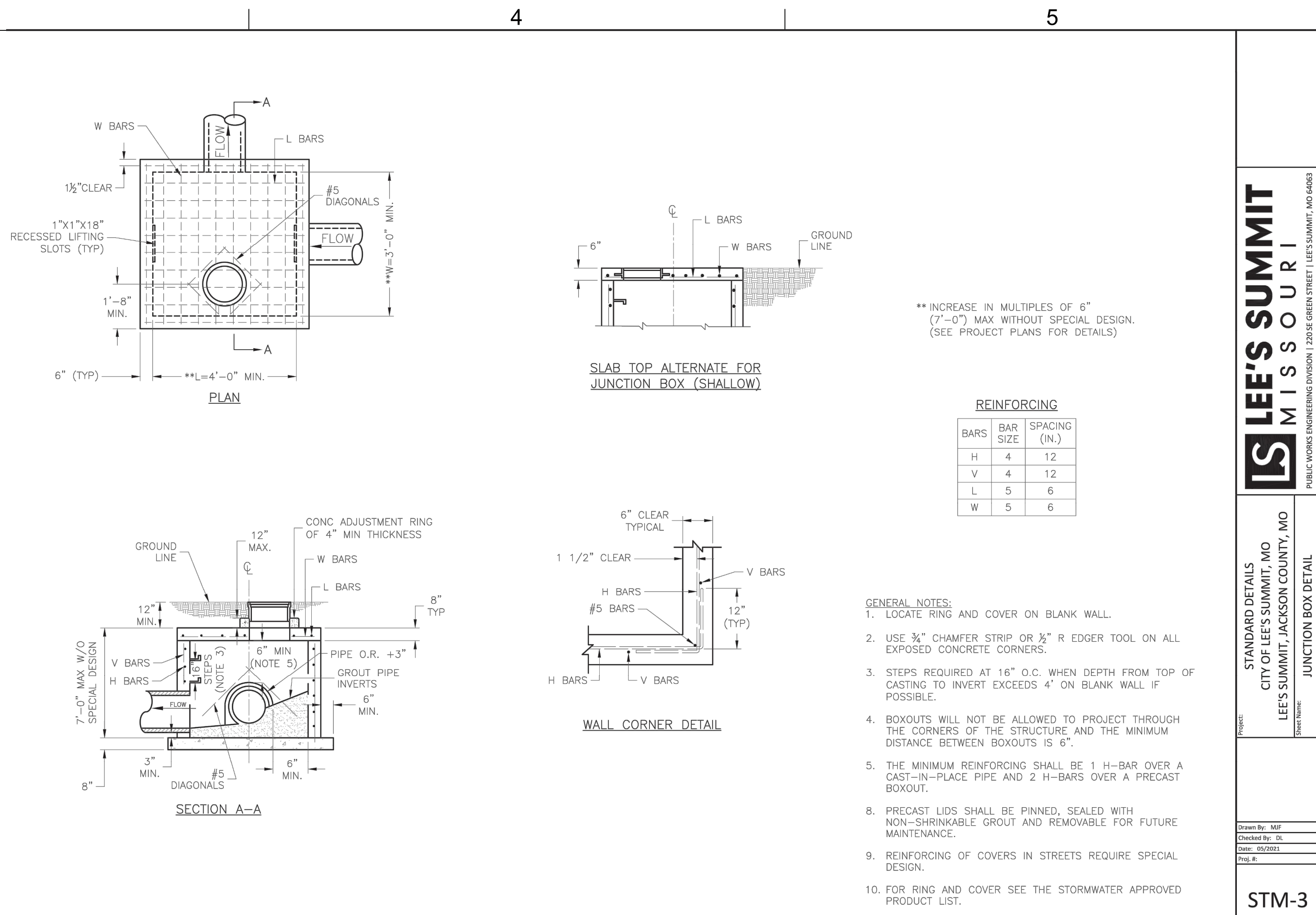
DRAWN BY: HFL

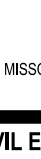

CHKD BY: CDW

© GLMV Architecture, Inc.
All work herein is the property of GLMV Architecture, Inc. and is not to be copied or used in any way without the express written consent of GLMV Architecture, Inc.

**PUBLIC
STORMWATER
PROFILES**

C-230



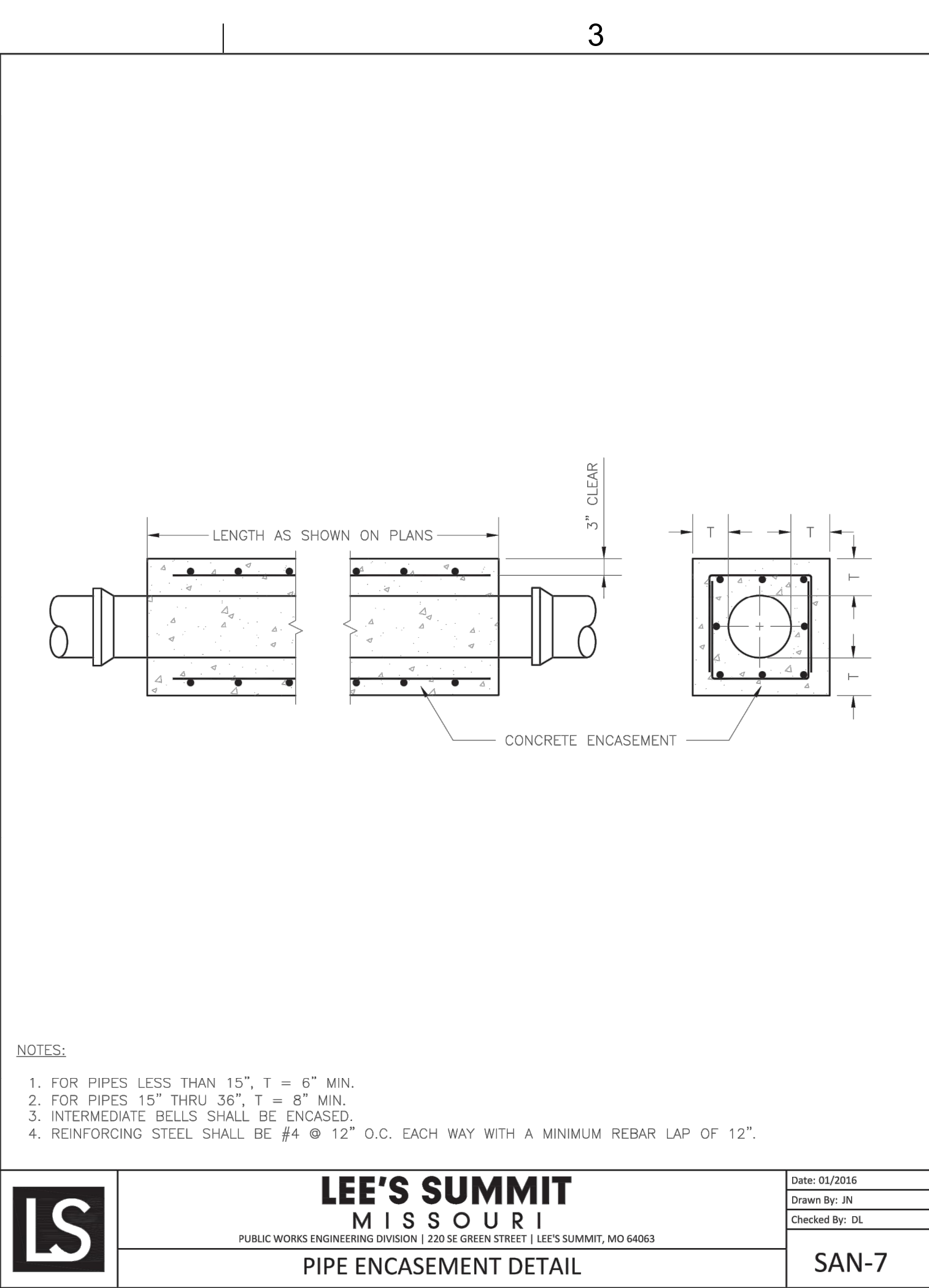
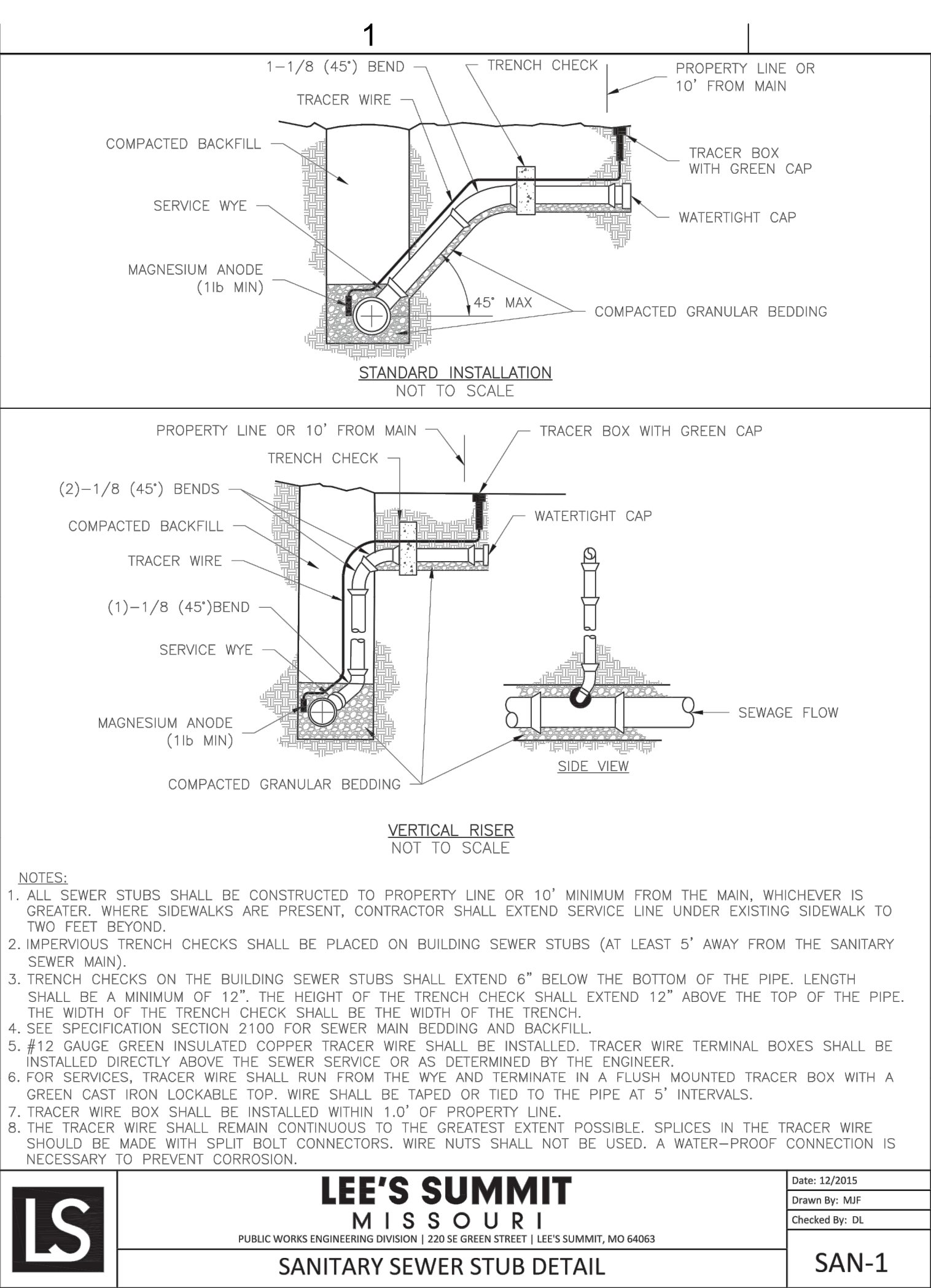
<div>GLMVArchitecture</div>		
9229 WARD PARKWAY SUITE # 210 KANSAS CITY, MO 64114 TEL: (816) 444-4200 FAX: (816) 285-5646 www.glmv.com		
GLMV ARCHITECTURE, INC. MISSOURI STATE CERTIFICATE OF AUTHORITY W00305		
CIVIL ENGINEER & LANDSCAPE ARCH. GLMV ARCHITECTURE, INC. MISSOURI CIVIL COA #2018033898 MISSOURI LANDSCAPE COA #000008 9229 WARD PARKWAY, SUITE # 210 KANSAS CITY, MO 64114 TEL: (816) 444-4200		
STRUCTURAL ENGINEER LEIGH A. OKANE MISSOURI COA #001644 250 NE MURBERRY, SUITE 201 LEE'S SUMMIT, MO, 64086 (816) 444-3144 PHONE		
MECH., ELEC. & PLUMBING ENGINEERS HOSS & BROWN ENGINEERS MISSOURI COA #01022 15902 MIDLAND DRIVE SHAWNEE, KS 66217 (913) 362-9090 PHONE		
SECURITY & IT ENGINEERS HENDERSON ENGINEERS MISSOURI COA # 000556 1801 MAIN STREET, SUITE 300 KANSAS CITY, MO 64086 (816) 663-8700 PHONE		
FIRE STATION #4 CITY OF LEE'S SUMMIT	5031 NORTHEAST LAKEWOOD WAY LEE'S SUMMIT, MISSOURI 64064	
	100% CONSTRUCTION DOCUMENT DRAWINGS	
REVISONS:		
#	Description	Date
1	ASI 01	11.16.2022
3	ASI 03	12.08.2022
<div></div> <div>DERICK HOLMES - CIVIL ENGINEER MOM PE-2022005196 2022-12-07</div> <div>The Professional Engineers used affixed to this sheet applies only to the materials and items shown on this sheet. All drawings, instruments or other documents not exhibiting this seal, affixed to be considered prepared by the engineer, and the engineer assumes liability and is not responsible for the seal, plan, drawings, or documents not exhibiting this seal.</div>		
PROJECT NO.	18225R21001	
DATE:	10.19.2022	
DRAWN BY:	DMH	
CHECKED BY:	SJB	
© GLMV Architecture, Inc. All work herein is the property of GLMV Architecture, Inc. and is not to be copied or used in any way without the express written consent of GLMV Architecture, Inc.		
STORMWATER DETAILS		
C-530		
PLEASE CONSIDER THE ENVIRONMENT BEFORE PRINTING THIS		

D

C

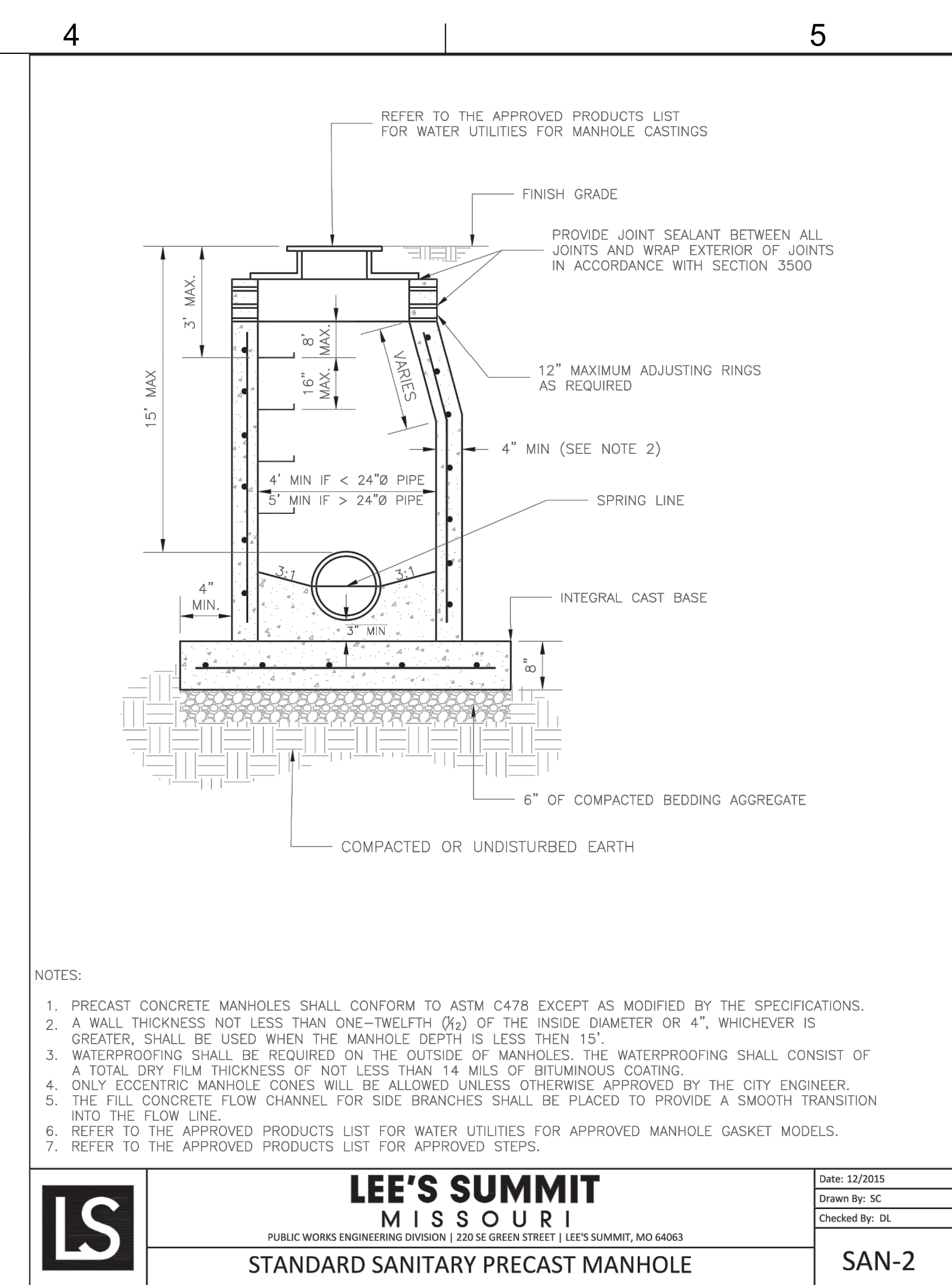
B

A



RELEASED FOR CONSTRUCTION
As Noted on Plans Review
Development Services Department
Lee's Summit, Missouri
12/16/2022

3



1

2

3

4

5

6

SANITARY SEWER STUB

NTS

PIPE ENCASEMENT

NTS

STANDARD SANITARY PRECAST MANHOLE

NTS

STANDARD SHALLOW SANITARY PRECAST MANHOLE

NTS

MANHOLE WALL CONNECTION

NTS

TRENCHING & BACKFILL DETAIL

NTS

9229 WARD PARKWAY
SUITE # 210
KANSAS CITY, MO 64114
TEL: (816) 444-4200
FAX: (316) 265-5646
www.glmv.com

GLMV ARCHITECTURE, INC.
MISSOURI STATE CERTIFICATE OF AUTHORITY
#00008

CIVIL ENGINEER & LANDSCAPE ARCH.
GLMV ARCHITECTURE, INC.
MISSOURI CIVIL COA #2018033898
MISSOURI LANDSCAPE COA #000008
9229 WARD PARKWAY, SUITE # 210
KANSAS CITY, MO 64114
TEL: (816) 444-4200

STRUCTURAL ENGINEER
LEIGH + O'KANE
MISSOURI COA #001644
250 NE MURBERRY, SUITE 201
LEE'S SUMMIT, MO, 64086
(816) 444-3144 PHONE

MECH. ELEC. & PLUMBING ENGINEERS
HOSS & BROWN ENGINEERS
MISSOURI COA #01022
15902 MIDLAND DRIVE
SHAWNEE, KS 66217
(913) 362-9090 PHONE

SECURITY & IT ENGINEERS
HENDERSON ENGINEERS
MISSOURI COA # 000556
1801 MAIN STREET, SUITE 300
KANSAS CITY, MO 64108
(816) 663-8700 PHONE

FIRE STATION #4
CITY OF LEE'S SUMMIT

5031 NORTHEAST LAKEWOOD WAY
LEE'S SUMMIT, MISSOURI 64064

#	Description	Date
3	AS1 03	12.08.2022

DERICK M. HOLMES
NUMBER
PE-2022005196
2022-12-07

DERICK HOLMES - CIVIL ENGINEER
MO# PE-2022005196

The Professional Engineers and Affiliates of this state apply and to the extent and terms shown on this seal. It is a condition of the seal that the engineer shall not be considered as endorsing any work or project unless it is specifically approved by the engineer and the engineer's signature is on the plan, drawing, or document not endorsing this seal.

PROJECT NO:	18225R21001
DATE:	10.19.2022
DRAWN BY:	DMH
CHKD BY:	SJB

© GLMV Architecture, Inc.
All work herein is the property of GLMV Architecture, Inc. and is not to be copied or used in any way without the express written consent of GLMV Architecture, Inc.

SANITARY SEWER DETAILS

C-540

PLEASE CONSIDER THE ENVIRONMENT BEFORE PRINTING THIS

100% CONSTRUCTION DOCUMENT DRAWINGS