

- SHIP WITH THIS BOX:
- (1) 4" ADJUSTMENT RING T & G
  - (1) EJ #1502 RING WITH MUDRING
  - (1) EJ #1502 COVER "NO LOGO"

### KAW VALLEY ENGINEERING, INC. SUBMITTAL REVIEW

REVIEWED FOR CONFORMANCE WITH  
CONTRACT DOCUMENTS

- ☒ APPROVED  
☐ APPROVED WITH NOTED CORRECTIONS  
☐ RESUBMIT WITH NOTED CORRECTIONS  
☐ REJECTED, REVISE, AND RESUBMIT  
☐ RETURNED NOT REVIEWED

BY: **NB** DATE: **4-13-2020**

REVIEW OF THESE SUBMITTALS DOES NOT RELIEVE THE CONTRACTOR OF HIS/HER RESPONSIBILITY TO MAKE ALL CONSTRUCTION CONFORM TO THE CONTRACT DOCUMENTS. CONTRACTOR IS RESPONSIBLE FOR ANY DEVIATIONS, ERRORS OR OMISSIONS FROM THE REQUIREMENTS OF THE CONTRACT DOCUMENTS. INCLUDING BUT NOT LIMITED TO SIZES, DIMENSION, QUANTITIES OR LOCATIONS

#### TOP SLAB REINFORCING

#5 @ 6" O.C.E.W. WITH  
#5 DIAGONALS AROUND  
CASTING  
1 1/2" CLEAR BOTTOM

UNIT WEIGHTS (LBS)

TOP SLAB 5,050

NOTES:  
CEMENT TO BE PER ASTM C-150  
REINFORCING TO BE PER ASTM A-615 GRADE 60  
CONCRETE TO BE AIR ENTRAINED 4000 PSI @ 28 DAYS MINIMUM



**BARBOUR CONCRETE COMPANY**

21421 E. TRUMAN ROAD (816) 796-3344  
INDEPENDENCE, MO 64056 FAX (816) 796-3518

WALL REINFORCING:

BASE REINFORCING:

EMERY SAPP AND SONS  
STREETS OF WEST PRYOR - PRIVATE  
LEE'S SUMMIT, MISSOURI

STRUCTURE  
NORTH TOP SLAB

DRAWN DATE 3/6/2020  
MARK P  
CHECKED DATE N/A

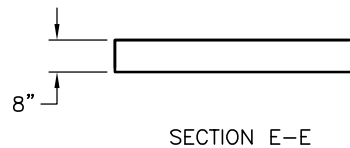
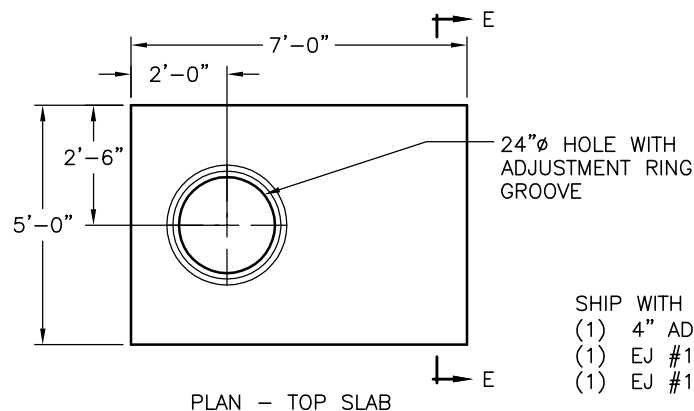
DESCRIPTION  
REPLACEMENT TOP SLAB

SCALE NTS  
MIX DESIGN 4000 PSI  
BCWO NUMBER  
SHT 1 OF 1

PLOT DATE: 3/6/2020

#### REVISIONS

REV.	DATE	BY	DESCRIPTION



SHIP WITH THIS BOX:

- (1) 4" ADJUSTMENT RING T & G
- (1) EJ #1502 RING WITH MUDRING
- (1) EJ #1502 COVER "NO LOGO"

REVISIONS

REV.	DATE	BY	DESCRIPTION

**KAW VALLEY ENGINEERING, INC.**  
**SUBMITTAL REVIEW**

REVIEWED FOR CONFORMANCE WITH  
CONTRACT DOCUMENTS

- ☒ APPROVED
- ☐ APPROVED WITH NOTED CORRECTIONS
- ☐ RESUBMIT WITH NOTED CORRECTIONS
- ☐ REJECTED, REVISE, AND RESUBMIT
- ☐ RETURNED NOT REVIEWED

BY: NB DATE: 4-13-2020

REVIEW OF THESE SUBMITTALS DOES NOT RELIEVE THE CONTRACTOR OF HIS/HER RESPONSIBILITY TO MAKE ALL CONSTRUCTION CONFORM TO THE CONTRACT DOCUMENTS. CONTRACTOR IS RESPONSIBLE FOR ANY DEVIATIONS, ERRORS OR OMISSIONS FROM THE REQUIREMENTS OF THE CONTRACT DOCUMENTS. INCLUDING BUT NOT LIMITED TO SIZES, DIMENSION, QUANTITIES OR LOCATIONS

TOP SLAB REINFORCING

#5 @ 6" O.C.E.W. WITH  
#5 DIAGONALS AROUND  
CASTING  
1 1/2" CLEAR BOTTOM

UNIT WEIGHTS	(LBS)
TOP SLAB	3,164

NOTES:  
CEMENT TO BE PER ASTM C-150  
REINFORCING TO BE PER ASTM A-615 GRADE 60  
CONCRETE TO BE AIR ENTRAINED 4000 PSI @ 28 DAYS MINIMUM

**B BARBOUR CONCRETE COMPANY**  
21421 E. TRUMAN ROAD (816) 796-3344  
INDEPENDENCE, MO 64056 FAX (816) 796-3518

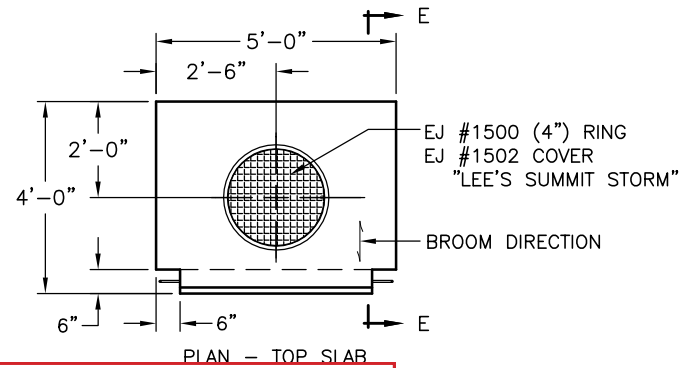
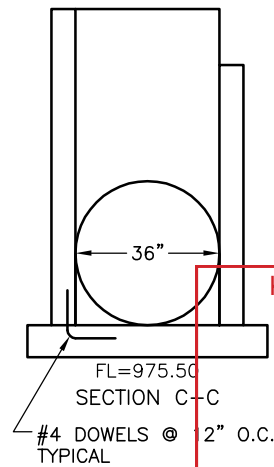
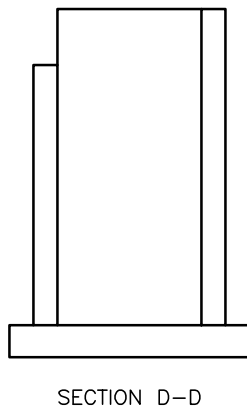
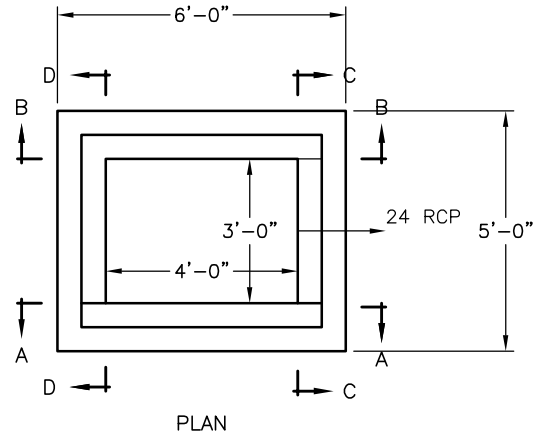
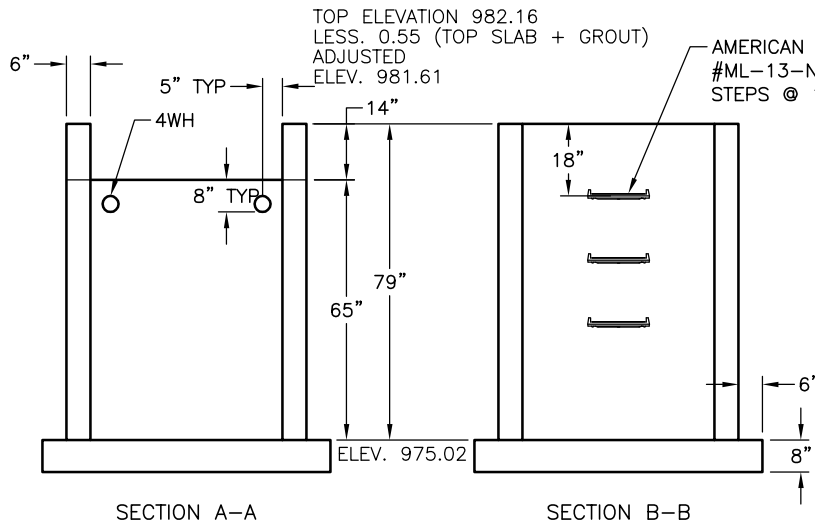
WALL REINFORCING:

BASE REINFORCING:

EMERY SAPP AND SONS  
STREETS OF WEST PRYOR - PRIVATE  
LEE'S SUMMIT, MISSOURI

STRUCTURE		DESCRIPTION		
SOUTH TOP SLAB		REPLACEMENT TOP SLAB		
DRAWN	DATE	SCALE	MIX DESIGN	BCWO NUMBER
MARK P	3/6/2020	NTS	4000 PSI	19-1117
CHECKED	DATE	INSPECTION	SHT 1 OF 1	
N/A	N/A	N/A		

PLOT DATE: 3/6/2020



**KAW VALLEY ENGINEERING, INC.**  
**SUBMITTAL REVIEW**  
REVIEWED FOR CONFORMANCE WITH  
CONTRACT DOCUMENTS

☒ APPROVED  
☐ APPROVED WITH NOTED CORRECTIONS  
☐ RESUBMIT WITH NOTED CORRECTIONS  
☐ REJECTED, REVISE, AND RESUBMIT  
☐ RETURNED NOT REVIEWED

BY: **NB** DATE: **4-13-2020**

REVIEW OF THESE SUBMITTALS DOES NOT RELIEVE THE  
CONTRACTOR OF HIS/HER RESPONSIBILITY TO MAKE ALL  
CONSTRUCTION CONFORM TO THE CONTRACT DOCUMENTS.  
CONTRACTOR IS RESPONSIBLE FOR ANY DEVIATIONS, ERRORS  
OR OMISSIONS FROM THE REQUIREMENTS OF THE CONTRACT  
DOCUMENTS, INCLUDING BUT NOT LIMITED TO SIZES, DIMENSION,  
QUANTITIES OR LOCATIONS

REVISIONS

REV.	DATE	BY	DESCRIPTION
		MP	REVISED ALL ELEVATIONS

TOP SLAB REINFORCING	
#4 @ 6" O.C.E.W. WITH #4 DIAGONALS AROUND CASTING 1 1/2" CLEAR BOTTOM	
UNIT WEIGHTS	(LBS)
TOP SLAB	1,481
TOP SECTION	
MID SECTION 2	
MID SECTION 1	
BASE SECTION	6,847
BASE SLAB	2,963
TOTAL BASE WT	9,810

NOTES:  
CEMENT TO BE PER ASTM C-150  
REINFORCING TO BE PER ASTM A-615 GRADE 60  
CONCRETE TO BE AIR ENTRAINED 4000 PSI @ 28 DAYS MINIMUM

**BARBOUR CONCRETE COMPANY**  
21421 E. TRUMAN ROAD (816) 796-3344  
INDEPENDENCE, MO 64056 FAX (816) 796-3518

WALL REINFORCING:  
#4 @ 12" O.C.E.W.

BASE REINFORCING:  
#4 @ 6" O.C.E.W.

EMERY SAPP AND SONS  
STREETS OF WEST PRYOR - PRIVATE  
LEE'S SUMMIT, MISSOURI

STRUCTURE		DESCRIPTION	
510+56.65, 44.64' RT		SETBACK CURB INLET	
DRAWN	DATE	SCALE	MIX DESIGN
MARK P	3/6/2020	NTS	4000 PSI
CHECKED	DATE	INSPECTION	BCWO NUMBER
N/A	N/A	N/A	19-1117
		SHT 1 OF 1	

PLOT DATE: 3/6/2020