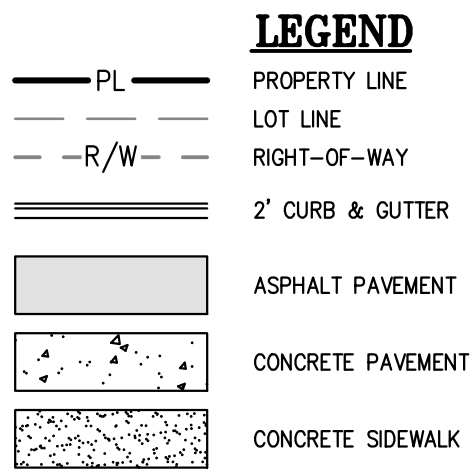
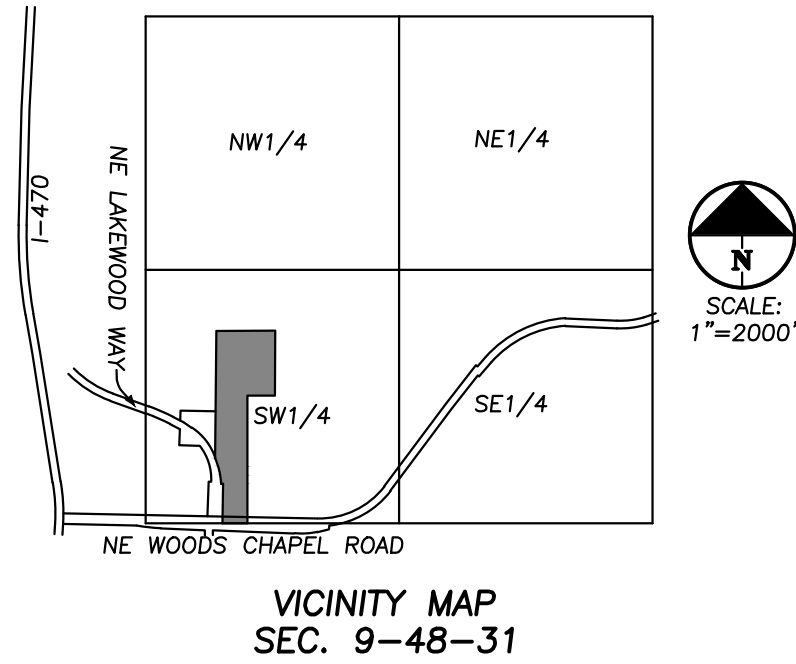


OFFSITE WATER MAIN REPLACEMENT PLANS
FOR
ORCHARD WOODS
IN THE CITY OF LEE'S SUMMIT, JACKSON COUNTY, MISSOURI



UTILITY COMPANIES:

MISSOURI GAS ENERGY LUCAS WALLS (LUCAS.WALLS@SUG.COM) 3025 SOUTHEAST CLOVER DRIVE LEE'S SUMMIT, MO 64082	(816) 969-2218
EVERGY PHILLIP INGRAM (PHILLIP.INGRAM@KCPL.COM) RON DEJARNETTE (RON.DEJARNETTE@KCPL.COM) 1300 HAMBLIN ROAD LEE'S SUMMIT, MO 64081	(816) 347-4339 (816) 347-4316
STORM SEWER (PUBLIC WORKS DEPARTMENT) 220 SE GREEN STREET LEE'S SUMMIT, MO 64063	(816) 969-1800
SANITARY SEWER & WATER (WATER UTILITIES DEPT.) 1200 SE HAMBLEMAN ROAD, LEE'S SUMMIT, MO 64081	(816)-969-1900
AT&T (913) 383-4929 MR. CLAYTON ANSPAUGH (CA4089@ATT.COM) 9444 NALL AVENUE OVERLAND PARK, KANSAS 66207	(913) 383-4849-FAX



UTILITY NOTES:
VISUAL INDICATIONS OF UTILITIES ARE AS SHOWN.
UNDERGROUND LOCATIONS SHOWN, AS FURNISHED BY THEIR
LESSORS, ARE APPROXIMATE AND SHOULD BE VERIFIED IN
THE FIELD AT THE TIME OF CONSTRUCTION. FOR ACTUAL
FIELD LOCATIONS OF UNDERGROUND UTILITIES CALL 811.

GENERAL NOTES:

- ALL CONSTRUCTION TO FOLLOW THE CITY OF LEE'S SUMMIT DESIGN AND CONSTRUCTION MANUAL AS ADOPTED BY ORDINANCE 5813.
- ALL WORKMANSHIP AND MATERIALS SHALL BE SUBJECT TO THE INSPECTION AND APPROVAL OF THE ENGINEERING DEPARTMENT OF THE CITY OF LEE'S SUMMIT, MISSOURI.
- LINEAL FOOT MEASUREMENTS SHOWN ON THE PLANS ARE HORIZONTAL MEASUREMENTS, NOT SLOPE MEASUREMENTS. ALL PAYMENTS SHALL BE MADE ON HORIZONTAL MEASUREMENTS.
- NO GEOLOGICAL INVESTIGATION HAS BEEN PERFORMED ON THE SITE.
- THE UTILITY LOCATIONS SHOWN ON THESE PLANS ARE TAKEN FROM UTILITY COMPANY RECORDS AND APPARENT FIELD LOCATIONS. THE CONTRACTOR SHALL VERIFY THE LOCATION AND DEPTH OF ALL UTILITIES PRIOR TO CONSTRUCTION.
- THE CONTRACTOR SHALL ADHERE TO THE PROVISIONS OF THE SENATE BILL NUMBER 583, 78TH GENERAL ASSEMBLY OF THE STATE OF MISSOURI. THE BILL REQUIRES THAT ANY PERSON OR FIRM DOING EXCAVATION ON PUBLIC RIGHT OF WAY DO SO ONLY AFTER GIVING NOTICE TO, AND OBTAINING INFORMATION FROM, UTILITY COMPANIES. STATE LAW REQUIRES 48 HOURS ADVANCE NOTICE. THE CONTRACTOR MAY ALSO UTILIZE THE FOLLOWING TOLL FREE PHONE NUMBER PROVIDED BY "MISSOURI ONE CALL SYSTEM, INC.," 1-800-DIG-RITE. THIS PHONE NUMBER IS APPLICABLE ANYWHERE WITHIN THE STATE OF MISSOURI. PRIOR TO COMMENCEMENT OF WORK, THE CONTRACTOR SHALL NOTIFY ALL THOSE COMPANIES WHICH HAVE FACILITIES IN THE NEAR VICINITY OF THE CONSTRUCTION TO BE PERFORMED.
- PRIOR TO ORDERING PRECAST STRUCTURES, SHOP DRAWING SHALL BE SUBMITTED TO THE DESIGN ENGINEER FOR APPROVAL.
- THE CONTRACTOR SHALL PROTECT ALL MAJOR TREES FROM DAMAGE. NO TREE SHALL BE REMOVED WITHOUT PERMISSION OF THE OWNER, UNLESS SHOWN OTHERWISE.
- CLEARING AND GRUBBING OPERATIONS AND DISPOSAL OF ALL DEBRIS THEREFROM SHALL BE PERFORMED BY THE CONTRACTOR IN STRICT ACCORDANCE WITH ALL LOCAL CODES AND ORDINANCES.
- ALL WASTE MATERIAL RESULTING FROM THE PROJECT SHALL BE DISPOSED OF OFF-SITE BY THE CONTRACTOR, OR AS DIRECTED BY THE OWNER AT NO ADDITIONAL COST.
- ALL EXCAVATIONS SHALL BE UNCLASSIFIED. NO SEPARATE PAYMENT WILL BE MADE FOR ROCK EXCAVATION.
- THE CONTRACTOR SHALL CONTROL THE EROSION AND SILTATION DURING ALL PHASES OF CONSTRUCTION AND SHALL KEEP THE STREETS CLEAN OF MUD AND DEBRIS.
- THE CONTRACTOR SHALL CONTACT THE CITY'S DEVELOPMENT SERVICES ENGINEERING INSPECTION TO SCHEDULE A PRE-CONSTRUCTION MEETING WITH A FIELD ENGINEERING INSPECTOR PRIOR TO ANY LAND DISTURBANCE WORK AT (816) 969-1200
- THE CONTRACTOR SHALL CONTACT THE RIGHT OF WAY INSPECTOR AT 816-969-1800 PRIOR TO ANY LAND DISTURBANCE ACTIVITIES WITHIN THE RIGHT OF WAY. THESE ACTIVITIES MAY REQUIRE A PERMIT.
- THE CONTRACTOR SHALL PROVIDE AND MAINTAIN ALL TRAFFIC HANDLING MEASURES NECESSARY TO ENSURE THAT THE GENERAL PUBLIC IS PROTECTED AT ALL TIMES. TRAFFIC CONTROL SHALL CONFORM TO THE MANUAL ON UNIFORM TRAFFIC CONTROL DEVICES (MUTCD LATEST EDITION).
- ALL SANITARY SEWER LATERALS SHALL HAVE A TRENCH CHECK, CONSISTING OF FLOWABLE BACKFILL, INSTALLED DURING CONSTRUCTION. TRENCH CHECK SHALL EXTEND TO BOTTOM OF TRENCH, TO WIDTH OF TRENCH, TO 12 INCHES ABOVE PIPE, FOR A MINIMUM LENGTH OF 12 INCHES. TRENCH CHECK SHALL BE LOCATED AT LEAST 5 FEET FROM SANITARY MAIN.

EARTHWORK:

- PRIOR TO EARTHWORK ACTIVITIES, PRE-DISTURBANCE EROSION AND SEDIMENT CONTROL DEVICES SHALL BE IN PLACE PER THE STORM WATER POLLUTION PREVENTION PLAN AND/OR THE EROSION AND SEDIMENT CONTROL PLAN PREPARED FOR THIS SITE.
- ALL BACKFILL MATERIAL SHALL BE PLACED IN MAXIMUM 6-INCH LIFTS AND COMPACTED TO 95-PERCENT OF MAXIMUM DENSITY AS DEFINED USING A STANDARD PROCTOR TEST (AASHTO T99/ASTM 698).
- BACKFILL MATERIALS SHALL NOT INCLUDE ORGANIC MATTER, DEBRIS OR TOPSOIL.
- THE CONTRACTOR SHALL BE RESPONSIBLE FOR REDISTRIBUTING THE TOPSOIL OVER PROPOSED TURF AND LANDSCAPED AREAS TO A MINIMUM DEPTH OF 6-INCHES BELOW FINAL GRADE.
- ALL AREAS SHALL BE GRADED FOR POSITIVE DRAINAGE. UNLESS NOTED OTHERWISE THE FOLLOWING GRADES SHALL APPLY:
 - TURF AREAS - 2.5% MINIMUM, 4H:1V MAXIMUM
- ALL DISTURBED AREAS SHALL BE FERTILIZED, SEEDED AND MULCHED IMMEDIATELY AFTER EXCAVATION ACTIVITIES HAVE CEASED. SEEDING SHALL BE PER THE EROSION AND SEDIMENT CONTROL PLAN AND/OR LANDSCAPE PLAN. IF NOT SPECIFIED SEEDING SHALL BE PER APWA SECTION 2400, LATEST EDITION. UNLESS OTHERWISE NOTED, SEEDING SHALL BE SUBSIDIARY TO THE CONTRACT PRICE FOR PIPE INSTALLATION.
- THE CONTRACTOR SHALL ADHERE TO THE REPORTING REQUIREMENTS OUTLINED IN THE STORM WATER POLLUTION PREVENTION PLAN (SWPPP) PREPARED FOR THIS PROJECT. EROSION AND SEDIMENT CONTROL DEVICES SHALL BE PROPERLY MAINTAINED AND KEPT CLEAN OF SILT AND DEBRIS AND IN GOOD WORKING ORDER. ADDITIONAL EROSION AND SEDIMENT CONTROL MEASURES SHALL BE INSTALLED AS REQUIRED.

UTILITIES:

- EXISTING UTILITIES HAVE BEEN SHOWN TO THE GREATEST EXTENT POSSIBLE BASED UPON INFORMATION PROVIDED TO THE ENGINEER. THE CONTRACTOR IS RESPONSIBLE FOR CONTACTING THE RESPECTIVE UTILITY COMPANIES AND FIELD LOCATING UTILITIES PRIOR TO CONSTRUCTION AND IDENTIFYING ANY POTENTIAL CONFLICTS. ALL CONFLICTS SHALL IMMEDIATELY BE BROUGHT TO THE ATTENTION OF THE ENGINEER.
- THE CONTRACTOR SHALL BE RESPONSIBLE FOR COORDINATING ANY REQUIRED UTILITY RELOCATIONS. UTILITIES DAMAGED THROUGH THE NEGLIGENCE OF THE CONTRACTOR SHALL BE REPAIRED AT THE CONTRACTOR'S EXPENSE.
- CONTRACTOR SHALL VERIFY FLOW-LINES AND STRUCTURE TOPS PRIOR TO CONSTRUCTION, AND SHALL NOTIFY ENGINEER OF ANY DISCREPANCIES. PROVIDE SHOP DRAWINGS FOR ALL PRECAST AND MANUFACTURED UTILITY STRUCTURES FOR REVIEW BY THE ENGINEER PRIOR TO CONSTRUCTION OF THE STRUCTURES.
- UTILITY SEPARATION: WATERLINES SHALL HAVE A MINIMUM OF 10 FEET HORIZONTAL AND 2 FEET VERTICAL SEPARATION FROM ALL SANITARY AND STORM SEWER LINES. IF MINIMUM SEPARATIONS CAN NOT BE OBTAINED, DUCTILE IRON PIPE, DIP, SHALL BE REQUIRED 10 FEET IN EACH DIRECTION OF THE CONFLICT ON THE WATER LINE.
- PAYMENT FOR TRENCHING, BACKFILLING, PIPE EMBEDMENT, FLOWABLE FILL, BACKFILL MATERIALS, CLEAN UP, SEEDING, SODDING AND ANY OTHER ITEMS NECESSARY FOR THE CONSTRUCTION OF THE UTILITY LINE SHALL BE INCLUDED IN THE CONTRACT PRICE FOR THE UTILITY INSTALLATION.
- THE CONTRACTOR SHALL BE RESPONSIBLE FOR CONTACTING RESPECTIVE UTILITY COMPANIES 48-HOURS IN ADVANCE FOR THE INSPECTION OF ANY PROPOSED UTILITY MAIN EXTENSION OR SERVICE LINE OR SERVICE CONNECTION TO ANY EXISTING MAIN.
- TRENCH SPOILS SHALL BE NEATLY PLACED ONSITE ADJACENT TO THE TRENCH, AND COMPACTED TO PREVENT SATURATION AND EXCESS SEDIMENT RUNOFF. UNSUITABLE MATERIALS, ROCK AND SHALE, ASPHALT, CONCRETE, TREES, BRUSH ETC. SHALL BE PROPERLY DISPOSED OF OFFSITE. MATERIALS MAY BE WASTED ONSITE AT THE DIRECTION OF THE OWNER OR HIS APPOINTED REPRESENTATIVE.

PREPARED & SUBMITTED BY:

PHELPS ENGINEERING, INC.
1270 N. WINCHESTER
OLATHE, KS 66061
913-393-1155 OFFICE
913-393-1166 FAX
CONTACT: JUDD CLAUSSEN, P.E.

OWNER:

ENTRES DEVELOPMENT, LLC
ATTN: DANIEL VILLANUEVA
424 NE BROCKTON DR
LEE'S SUMMIT MO, 64064
(310) 760-6205

BENCHMARK:
XXXX

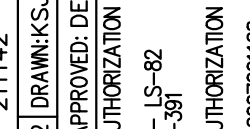
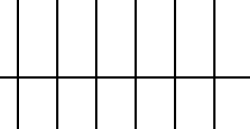
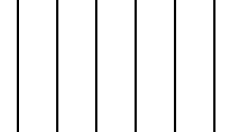
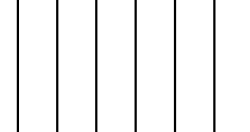
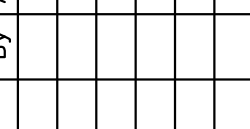
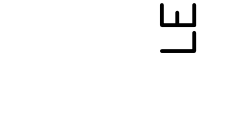
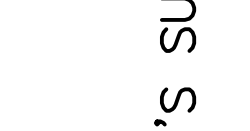
	INDEX
1	COVER SHEET
2	GENERAL LAYOUT
3	WATER LINE 1 PLAN & PROFILE
4	WATER LINE DETAILS

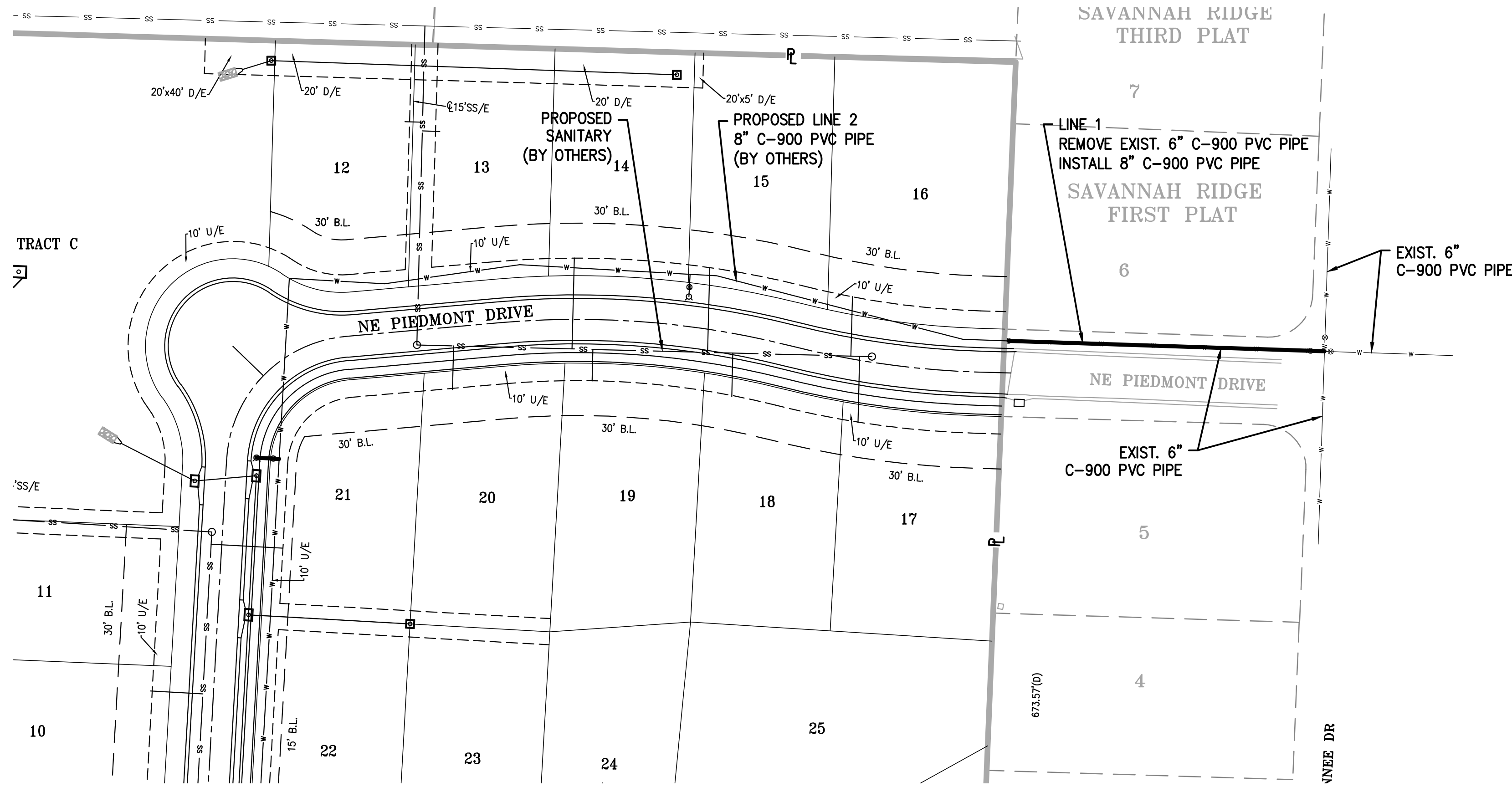
PROJECT NO.	211142	No.	Date	By	App.
DATE: 11-14-2021	DRINKSJJ				
CHECKED: DEU	APPROVED: DEU				
CERTIFICATE OF AUTHORIZATION					
LAND SURVEYING - LS-82					
ENGINEERING - E-361					
CERTIFICATE OF AUTHORIZATION					
LAND SURVEYING-200701028					
ENGINEERING-200700209					

COVER SHEET
ORCHARD WOODS
LEE'S SUMMIT, JACKSON COUNTY, MISSOURI

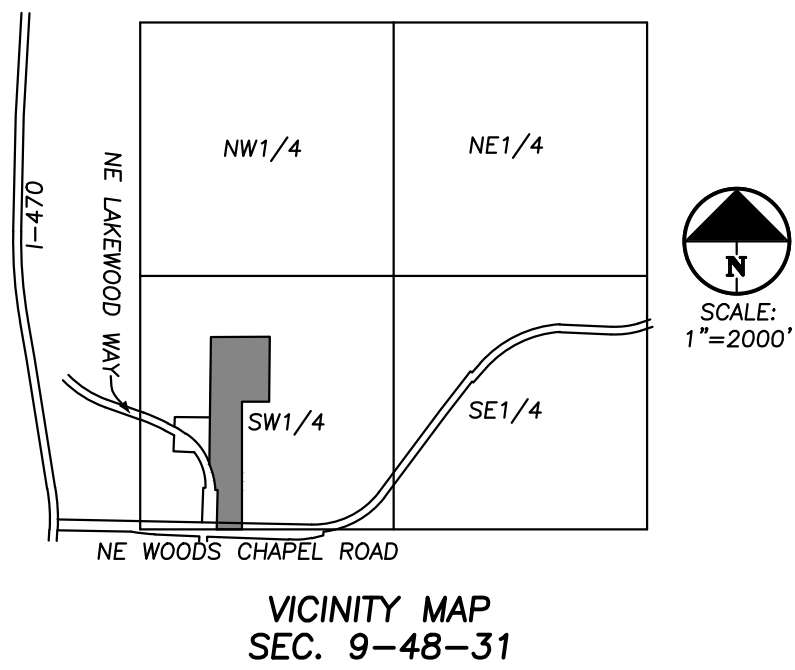
PHELPS ENGINEERING, INC.
1270 N. Winchester
Olathe, Kansas 66061
(913) 393-1155
Fax (913) 393-1166
www.phelpengineering.com

PLANNING
ENGINEERING
IMPLEMENTATION

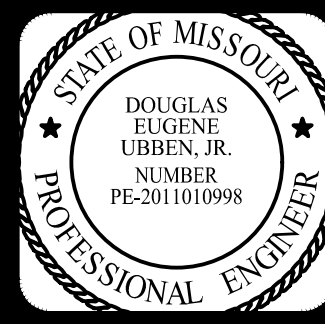
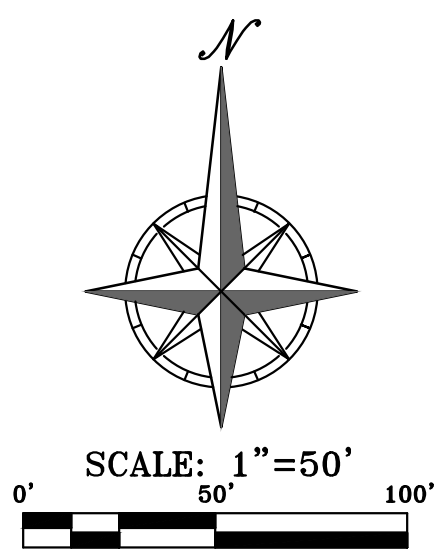




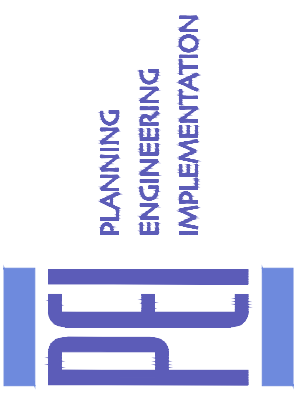
- GENERAL NOTES:**
1. ALL CONSTRUCTION TO FOLLOW THE CITY OF LEE'S SUMMIT DESIGN AND CONSTRUCTION MANUAL AS ADOPTED BY ORDINANCE 5813.
 2. THE CONTRACTOR IS RESPONSIBLE FOR VERIFYING ALL EXISTING UTILITY LOCATIONS PRIOR TO EXCAVATIONS.
 3. FOR ALL WATER LINES THE MAXIMUM DEPTH OF COVER IS SEVEN (7) FEET.



BENCHMARK:
XXXX



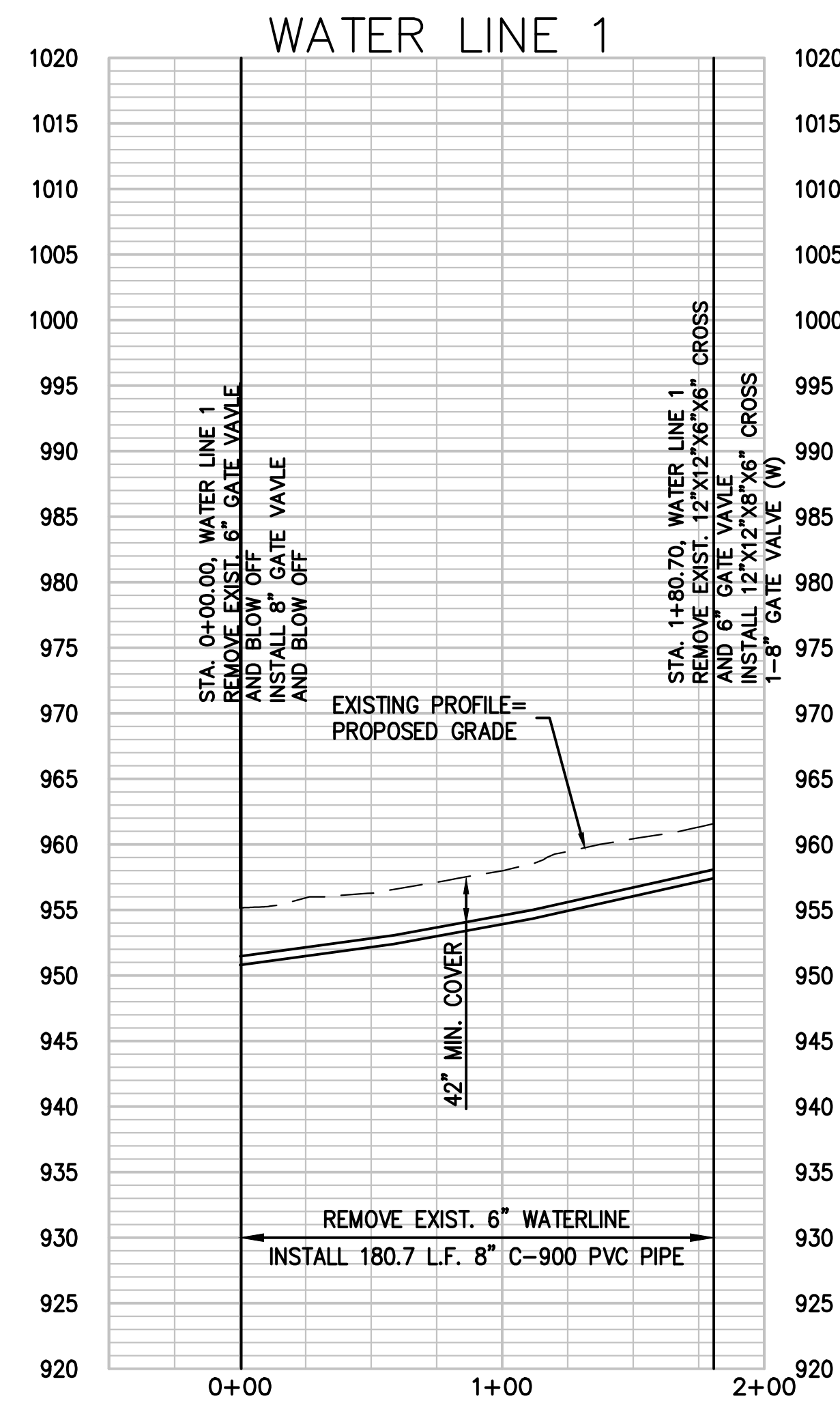
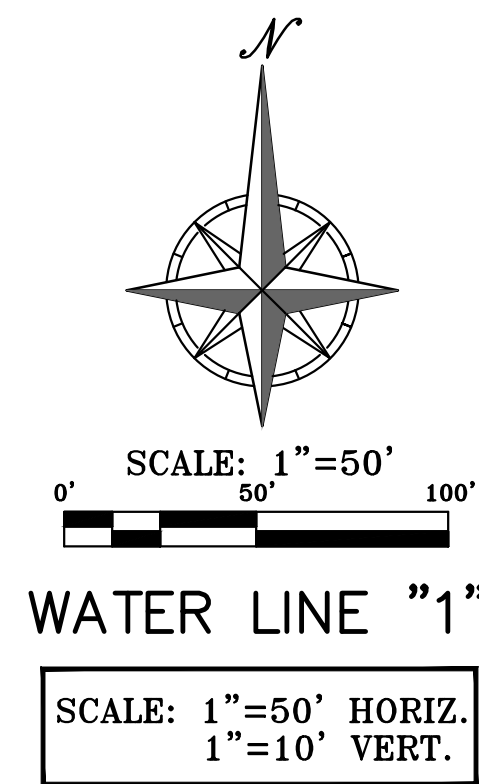
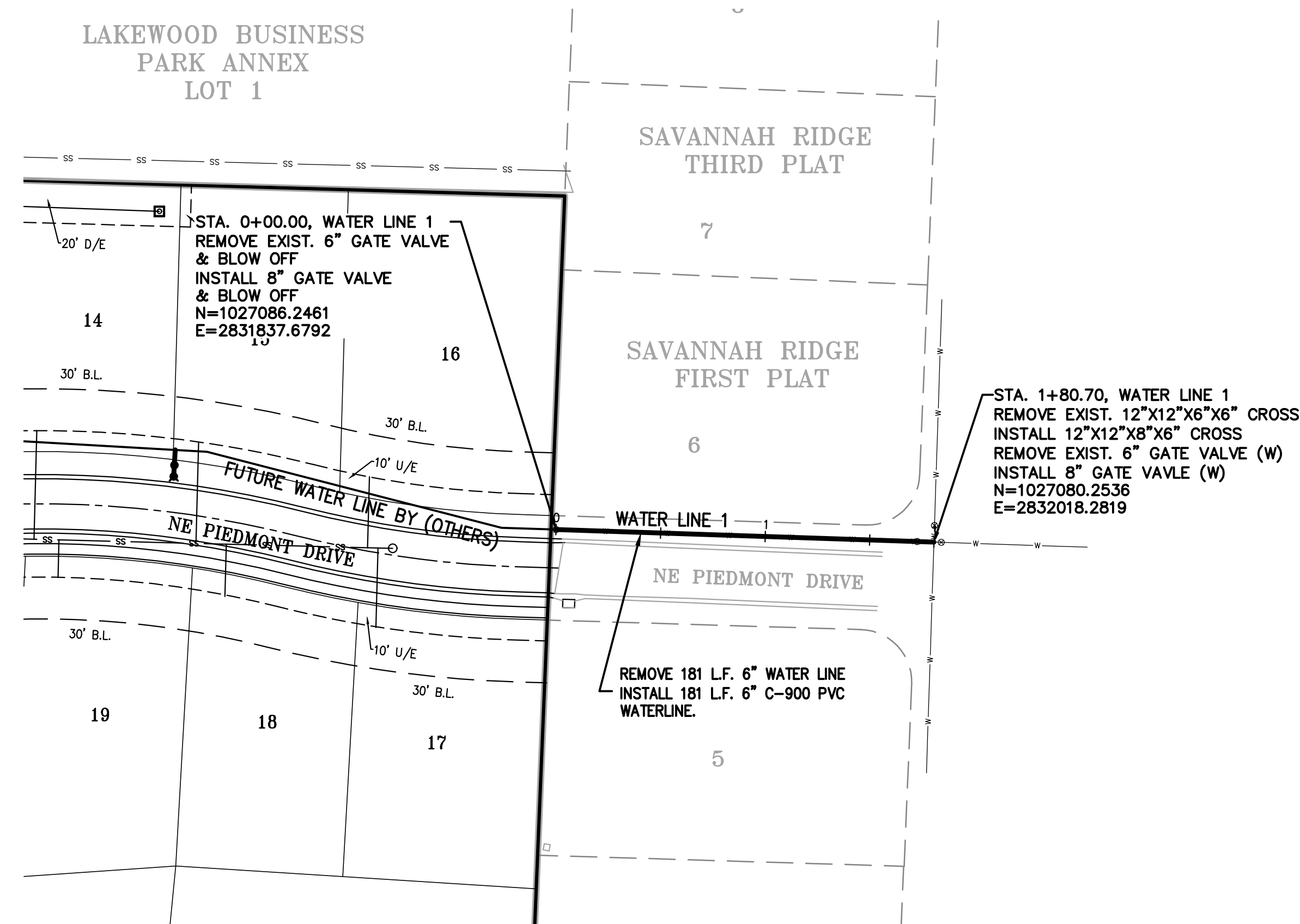
PHELPS ENGINEERING, INC.
1270 N. Winchester
Olathe, Kansas 66061
(913) 393-1155
Fax (913) 393-1166
www.phelpengineering.com



GENERAL LAYOUT
ORCHARD WOODS
LEE'S SUMMIT, JACKSON COUNTY, MISSOURI

PROJECT NO.	211142	No.	Date	Revisions:	By	App.
DATE: 11-14-2022	DRAWN: KSJ					
CHECKED: DEU	APPROVED: DEU					
CERTIFICATE OF AUTHORIZATION						
LAND SURVEYING - LS-82						
ENGINEERING - E-361						
CERTIFICATE OF AUTHORIZATION						
LAND SURVEYING-200700128						
ENGINEERING-200700028						

\\PHILIPS-SERVER\Projects\1\211142\Drawings\WATER\UPGRADE\WATER.dwg Layout:1 (2) Nov 17, 2022 - 2:03pm Shawn Jones



- GENERAL NOTES:
1. ALL CONSTRUCTION TO FOLLOW THE CITY OF LEE'S SUMMIT DESIGN AND CONSTRUCTION MANUAL AS ADOPTED BY ORDINANCE 5813.
 2. THE CONTRACTOR IS RESPONSIBLE FOR VERIFYING ALL EXISTING UTILITY LOCATIONS PRIOR TO EXCAVATIONS.
 3. FOR ALL WATER LINES THE MAXIMUM DEPTH OF COVER IS SEVEN (7) FEET.

PROJECT NO.	211142	No.	Date	Revisions:	By	App.
DATE: 11-14-2022	DRAWN: KSJ					
CHECKED: DEU	APPROVED: DEU					
CORPORATE AUTHORIZATION						
LAND SURVEYING - LS-82						
ENGINEERING - E-361						
CERTIFICATE OF AUTHORIZATION						
LAND SURVEYING-200701028						
ENGINEERING-200700028						



PHILIPS ENGINEERING, INC.
1270 N. Winchester
Olathe, Kansas 66061
(913) 393-1155
Fax: (913) 393-1166
www.phelpsenengineering.com

PLANNING
ENGINEERING
IMPLEMENTATION

WATERLINE PLAN & PROFILE
ORCHARD WOODS
LEE'S SUMMIT, JACKSON COUNTY, MISSOURI

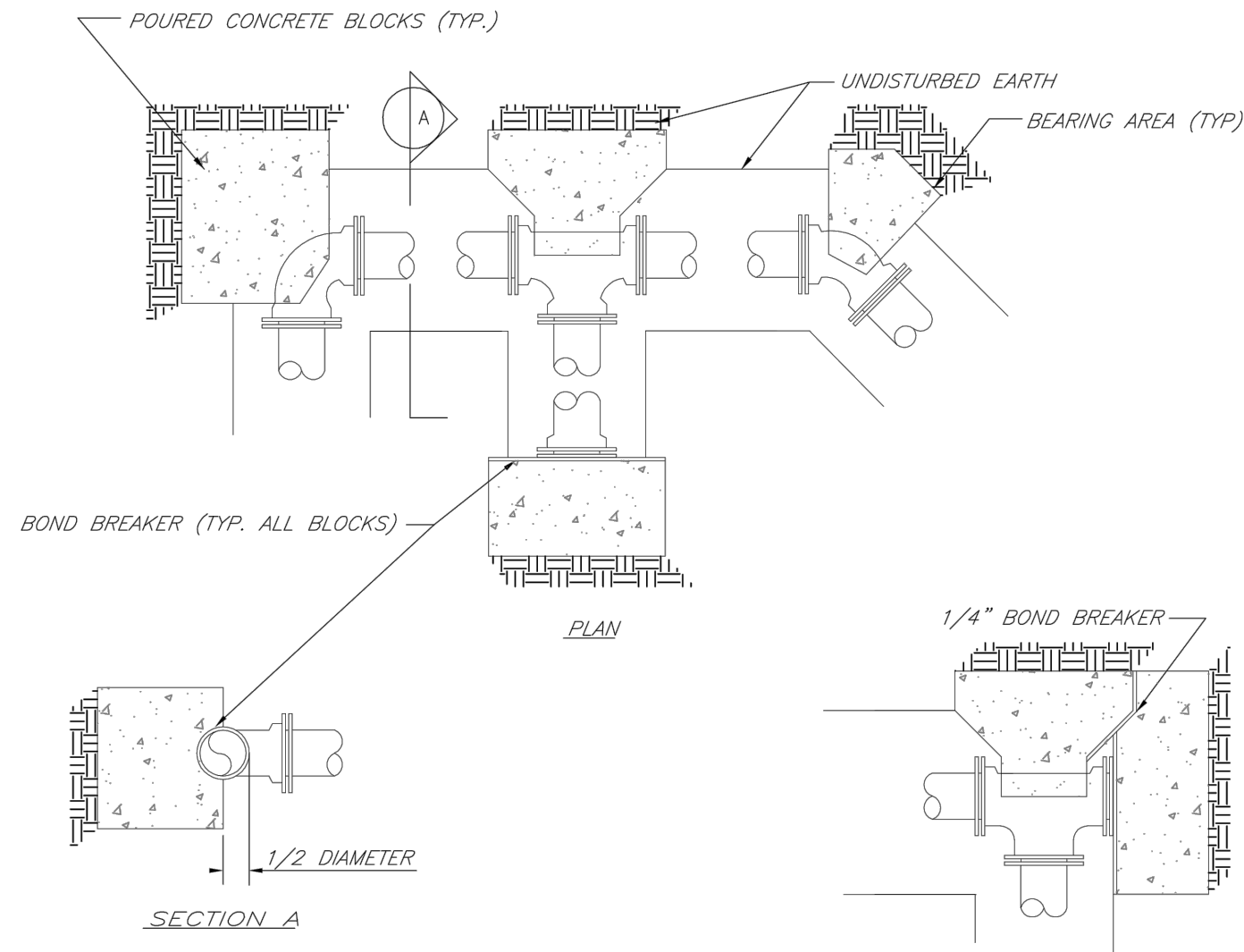
SHEET

3

\\PHelps-SERVER\Projects\1\211142\Draw\WATER UPGRADE\DETAILS.dwg Layout1 Shawn Jones Nov 17, 2022 - 2:03pm

REQUIRED CONCRETE BEARING AREA (SQUARE FEET - SF)					
NOM. DIA. (INCHES)	TEE, PLUG	BEND	BEND	BEND	BEND
6	4.7	6.7	4.0	4.0	4.0
8	8.4	11.8	6.4	4.0	4.0
10	13.1	18.5	10.0	5.1	4.0
12	18.6	26.7	14.4	7.4	4.0
14	25.7	36.3	19.6	10.0	5.0
16	33.5	47.4	25.6	13.1	6.6
18	42.4	REST. JT.	32.5	16.5	8.3
20	REST. JT.	REST. JT.	40.1	20.4	10.3
24	REST. JT.	REST. JT.	REST. JT.	29.4	14.9

- NOTES:
1. ALL BENDS WITHOUT RESTRAINED JOINTS SHALL HAVE CONCRETE THRUST BLOCKS INSTALLED FOR RESTRAINT.
 2. MEGA LUGS MAY BE USED ONLY IN CONJUNCTION WITH CONCRETE THRUST BLOCKING.
 3. BEARING AREA MUST BE AGAINST UNDISTURBED SOIL.
 4. DO NOT COVER JOINTS OR BOLTS (WHERE APPLICABLE) WITH CONCRETE.

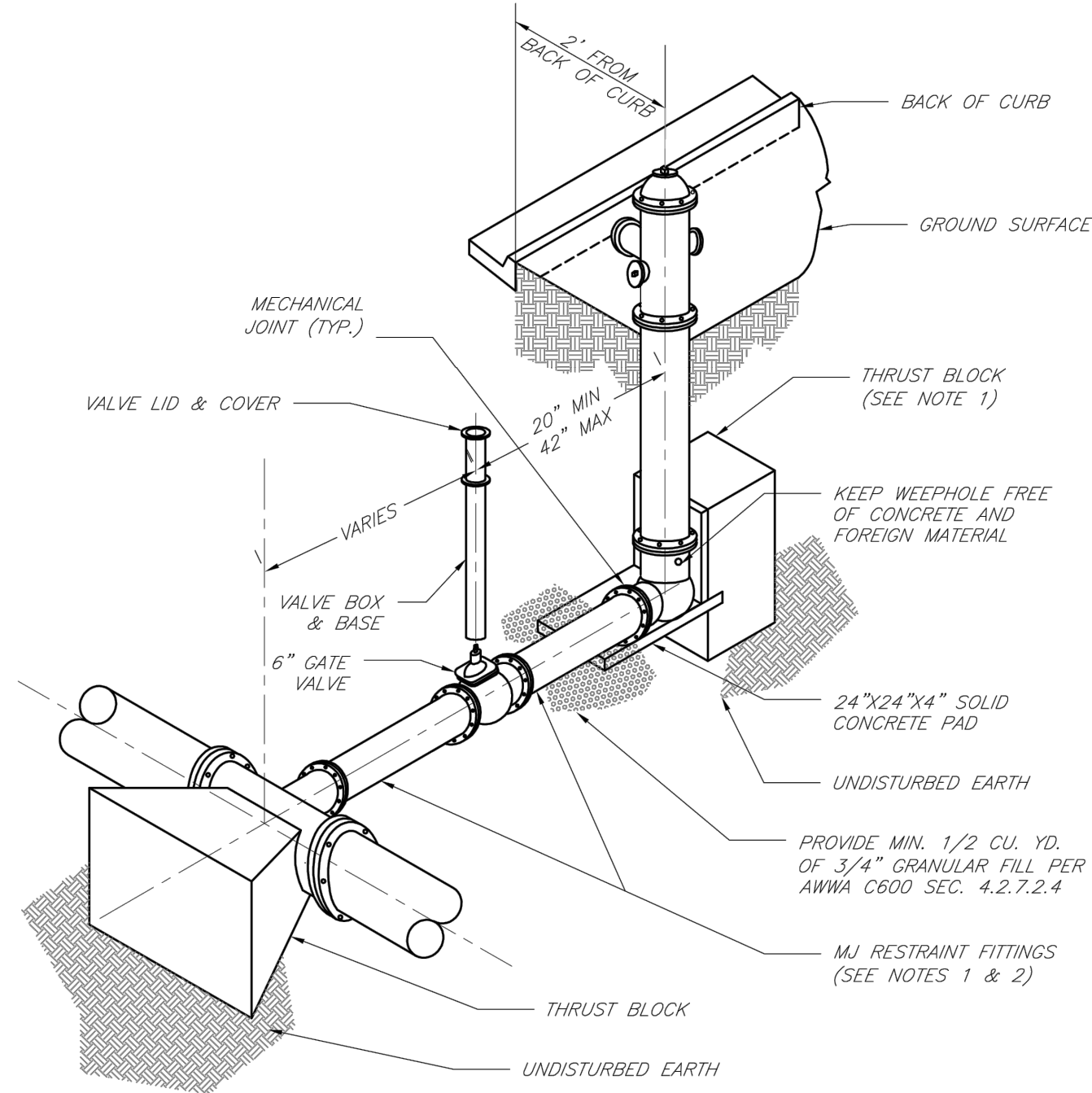


LEE'S SUMMIT
MISSOURI
PUBLIC WORKS ENGINEERING DIVISION | 220 SE GREEN STREET | LEE'S SUMMIT, MO 64063

Date: 02/13
Drawn By: JN
Checked By: DL
FILE: WAT-1
Rev: 1/14
Rev:

LEE'S SUMMIT
MISSOURI
PUBLIC WORKS ENGINEERING DIVISION | 220 SE GREEN STREET | LEE'S SUMMIT, MO 64063

Date: 02/13
Drawn By: JN
Checked By: DL
FILE: WAT-11
Rev: 1/14
Rev:



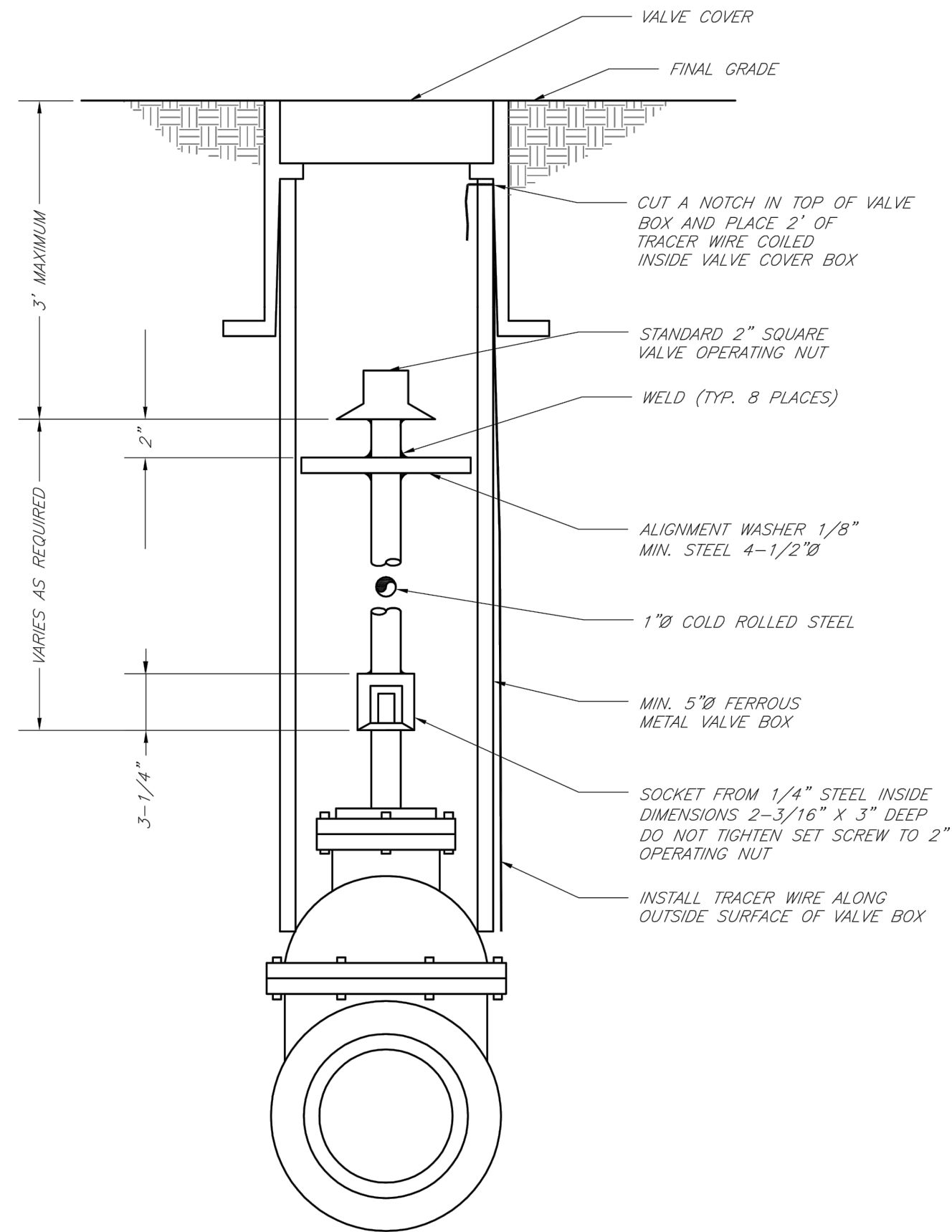
- NOTES:
1. WHEN RETAINER GLANDS ARE USED IN LIEU OF MECHANICAL JOINT (MJ) RESTRAINT FITTINGS, HORIZONTAL THRUST BLOCKS ARE REQUIRED.
 2. GATE VALVE MAY BE BOLTED DIRECTLY TO MJ RESTRAINT TEE.
 3. SEE APPROVED PRODUCTS LIST FOR WATER UTILITIES FOR FIRE HYDRANT, VALVES, VALVE LID, AND COVER.
 4. BOTTOM HYDRANT FLANGE SHALL BE 2" TO 6" ABOVE FINISHED GRADE.
 5. FOR STREETS WITHOUT CURBS FIRE HYDRANTS SHALL BE PLACED WITHIN 1 FOOT OF THE R/W LINE, BUT NOT MORE THAN 10' FROM EDGE OF PAVEMENT. FIRE HYDRANT SHALL NOT BE PLACED IN BOTTOM OF DITCH.
 6. HYDRANT SHALL BE ROTATED AS DIRECTED BY INSPECTOR.



LEE'S SUMMIT
MISSOURI
PUBLIC WORKS ENGINEERING DIVISION | 220 SE GREEN STREET | LEE'S SUMMIT, MO 64063

Date: 02/13
Drawn By: JN
Checked By: DL
FILE: WAT-7
Rev: 1/14
Rev:

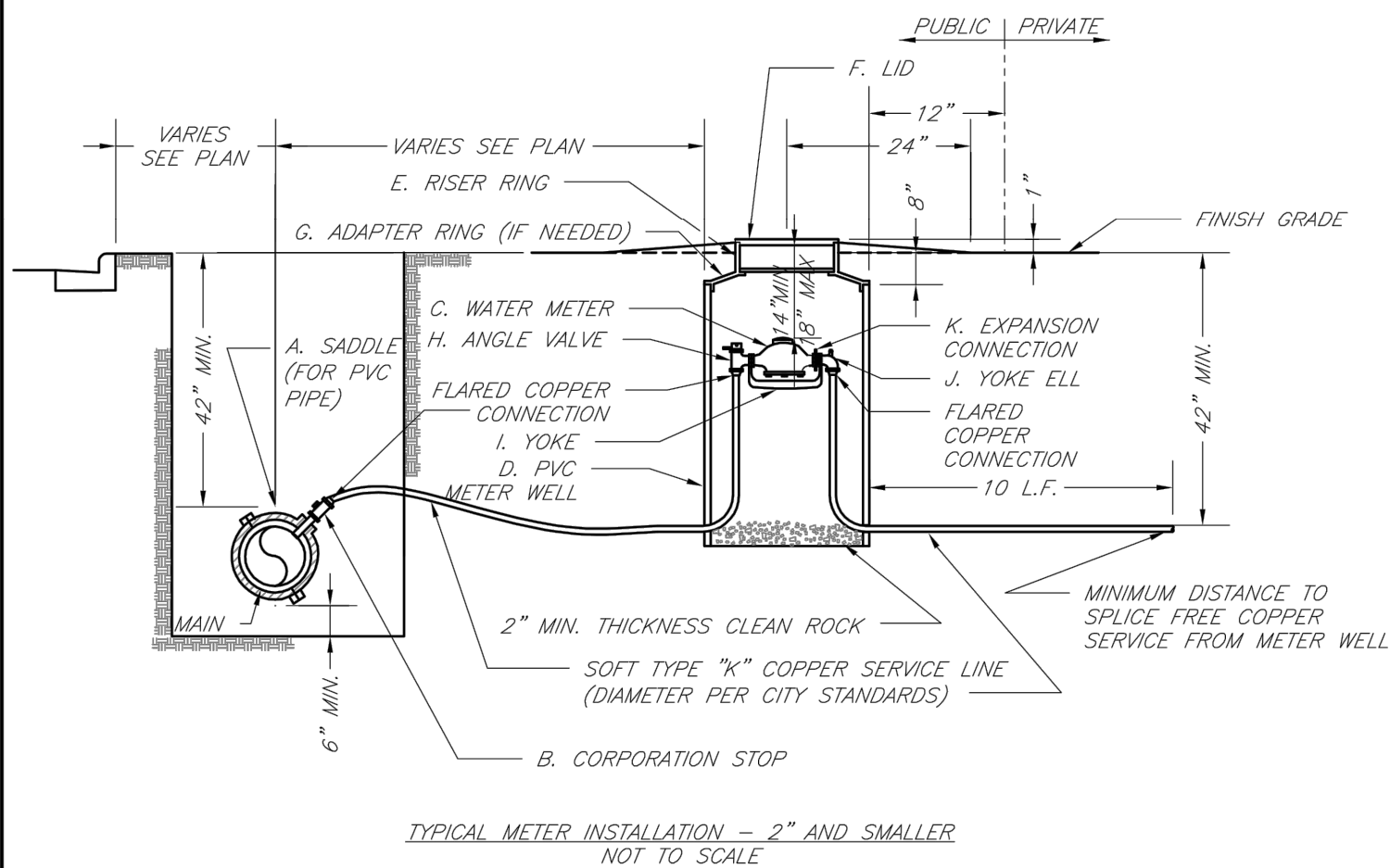
HYDRANT INSTALLATION - STRAIGHT SET



LEE'S SUMMIT
MISSOURI
PUBLIC WORKS ENGINEERING DIVISION | 220 SE GREEN STREET | LEE'S SUMMIT, MO 64063

Date: 02/13
Drawn By: JN
Checked By: DL
FILE: WAT-9
Rev: 1/14
Rev:

VALVE STEM EXTENSION AND VALVE BOX



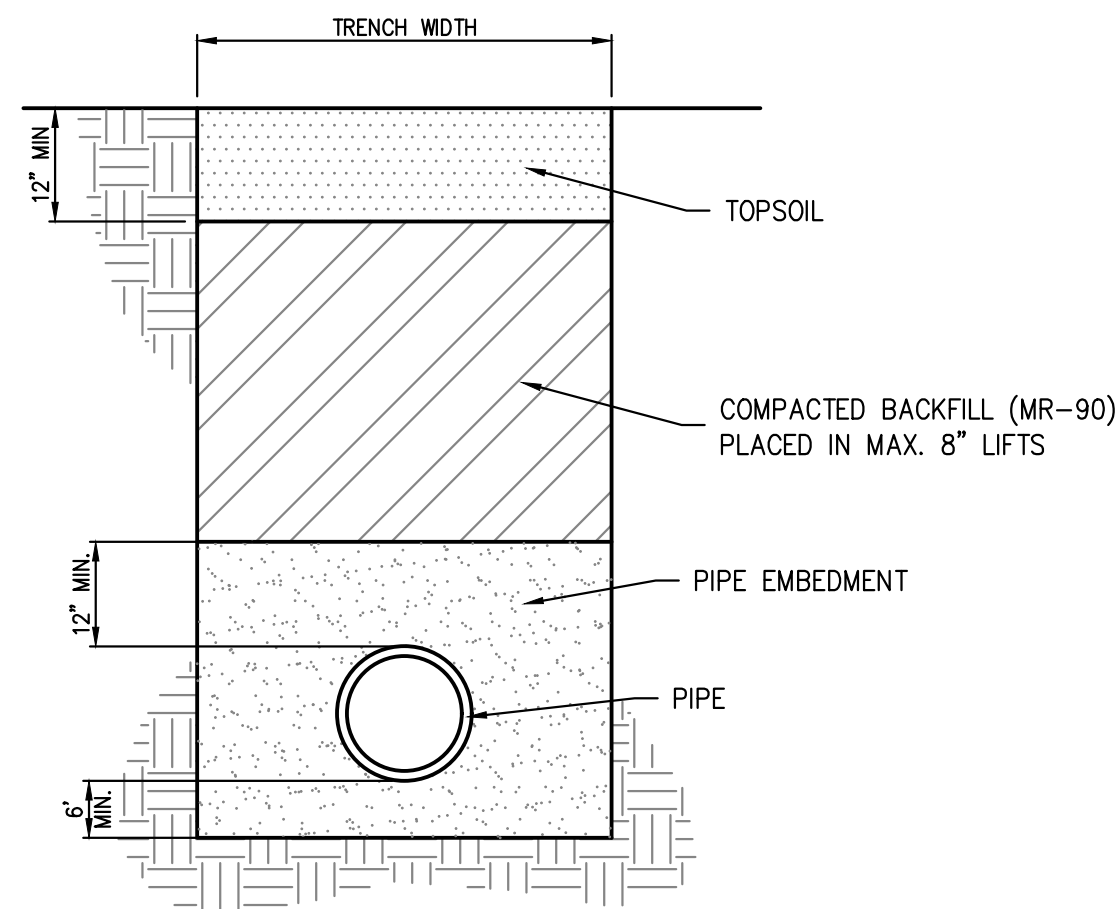
- NOTES:
1. METER INSTALLATION SHALL NOT BE LOCATED IN AREAS SUBJECT TO VEHICULAR TRAFFIC OR IN CONCRETE PAVEMENT WITHOUT CITY APPROVAL.
 2. IF METER IS TO BE LOCATED OTHER THAN IN FRONT OF PROPERTY LINE, CITY APPROVAL SHALL BE OBTAINED.
 3. CITY TO FURNISH ITEMS A-K.
 4. NO OTHER EQUIPMENT SHALL BE INSTALLED IN THIS PIT.
 5. 42" MINIMUM BURY DEPTH FOR ALL SERVICE LINES.
 6. EXCAVATION FOR TAP TO EXPOSE 4 LINEAR FEET OF MAIN.
 7. NO SPLICES ALLOWED BETWEEN METER AND MAIN.
 8. SERVICE CONNECTION TAP AT APPROXIMATELY 45 DEGREES.
 9. LID AND RISER RING SHALL BE SET SO THAT GROUND WATER WILL DRAIN AWAY FROM THE WELL.
 10. CONTACT WATER UTILITIES, 816-969-1900, FOR REQUIREMENTS OF A METER LARGER THAN 2"



LEE'S SUMMIT
MISSOURI
PUBLIC WORKS ENGINEERING DIVISION | 220 SE GREEN STREET | LEE'S SUMMIT, MO 64063

Date: 02/13
Drawn By: JN
Checked By: DL
FILE: WAT-11
Rev: 1/14
Rev:

SERVICE CONNECTION/METER WELL



TRENCH AND BACKFILL DETAIL
N.T.S.

PHelps ENGINEERING, INC.
1270 N. Winchester
Olathe, Kansas 66061
(913) 393-1155
Fax (913) 393-1166
www.phelpengineering.com



WATER MAIN DETAILS
ORCHARD WOODS
LEE'S SUMMIT, JACKSON COUNTY, MISSOURI

PROJECT NO.	211142	No.	Date	Revisions:	By	App.
DATE: 11-14-2022	DRAWN: KSJ					
CHECKED: DEU	APPROVED: DEU					
CORPORATE OF AUTHORIZATION						
LAND SURVEYING - LS-82						
ENGINEERING - E-SPT						
CERTIFICATE OF AUTHORIZATION						
LAND SURVEYING-200701028						
ENGINEERING-200705028						

SHEET

4