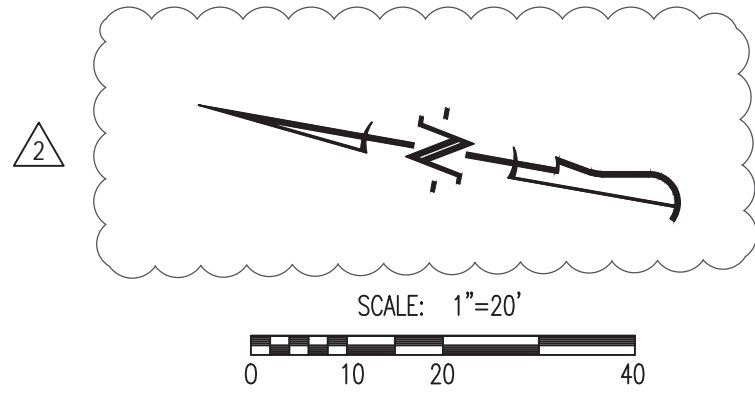


LEGEND OF LABELS	
A	REMOVE EXISTING FIRE HYDRANT AND EXTEND 6" SDR35 WATER MAIN 173 L.F. PER CITY OF LEE'S SUMMIT WATER DEPARTMENT SPECIFICATIONS. REFER TO PROFILE & DETAILS SHEET CE2. CONTRACTOR TO COORDINATE WITH CITY OF LEE'S SUMMIT WATER UTILITIES DEPARTMENT.
B	RELOCATED 6" FIRE HYDRANT ASSEMBLY (INCLUDES THRUST BLOCKING, HYDRANT, VALVE WITH VALVE BOX TO SURFACE AND M.J. JOINTS). INSTALL FIRE HYDRANT ASSEMBLY PER DETAIL SHEET CE2.
C	INSTALL 6" VALVE WITH VALVE BOX TO SURFACE. PROVIDE 6" PLUG AFTER VALVE W/ CONCRETE THRUST BLOCK.
D	INSTALL 6" FIRE HYDRANT ASSEMBLY (INCLUDES APPROXIMATELY 12 L.F. OF 6" SDR35, FIRE HYDRANT, 6"x6"x6" TEE, 6" GATE VALVE WITH VALVE BOX TO SURFACE AND THRUST BLOCKING). REFER TO DETAIL SHEET CE2.
E	PROPOSED DOMESTIC WATERLINE SERVICE CONNECTION FOR PROPOSED BUILDING. REFER TO "KANSAS CITY SURGICAL & DENTAL OFFICE" PLANS BY CROCKETT FOR METER SIZE AND EXTENSION TO BUILDING.
F	PROPOSED IRRIGATION LINE CONNECTION. REFER TO "KANSAS CITY SURGICAL & DENTAL OFFICE" PLANS BY CROCKETT FOR METER SIZE AND EXTENSION TO BUILDING.
G	PROPOSED FIRE LINE CONNECTION WITH DOUBLE CHECK DETECTOR VAULT. REFER TO "KANSAS CITY SURGICAL & DENTAL OFFICE" PLANS BY CROCKETT FOR DETAILS AND EXTENSION TO BUILDING.
H	INSTALL 6"x6"x6" TEE WITH THRUST BLOCKING.
I	INSTALL 6" - 22.5' HORIZONTAL BEND WITH THRUST BLOCKING.

- GENERAL NOTES:
- IT IS THE RESPONSIBILITY OF THE CONTRACTOR TO ACQUIRE EXISTING UTILITY LOCATIONS PRIOR TO CONSTRUCTION. IT IS ALSO THE RESPONSIBILITY OF THE CONTRACTOR TO RESTORE ANY DAMAGED OR BROKEN UTILITY TO ORIGINAL OR BETTER CONDITION. ALL UTILITIES SHOWN ON THESE PLANS ARE BASED ON UTILITY LOCATES PROVIDED. CONTRACTOR TO BE AWARE THAT EXISTING UTILITIES NOT SHOWN ON THESE PLANS MAY EXIST. CONTRACTOR TO CONTACT ENGINEER IF ANY CONFLICT WITH EXISTING UTILITIES ARISE DURING CONSTRUCTION.
  - ALL WATERLINE CONSTRUCTION (TRACER WIRE, TAPPING SLEEVE, VALVES, JOINTS, BENDS, THRUST BLOCKING, PIPE BEDDING, FIRE HYDRANTS, ECT.) SHALL CONFORM TO THE CITY OF LEE'S SUMMIT SPECIFICATIONS. ALL FITTING (TEES, BENDS, ECT.) SHALL BE DUCTILE IRON WITH EPOXY-COATING AS PER CITY SPECIFICATIONS. CONTRACTOR TO REFER TO SECTION 3900 - WATER MAINS, CITY OF LEE'S SUMMIT WATER MAIN SPECIFICATIONS.
  - EXACT DEPTH OF EXISTING WATER MAIN IS UNKNOWN. ADDITIONAL VERTICAL BENDS MAY BE REQUIRED TO AVOID CONFLICTS WITH OTHER UTILITIES AND SHALL BE MADE AT 45° ANGLES.
  - ALL PROPOSED FIRE HYDRANTS SHALL HAVE SHUT OFF VALVE.



REVISIONS:

NO.	DATE
ORIGINAL	03/08/2019
1	03/04/2019
2	03/17/2019

THIS SHEET HAS BEEN SIGNED, SEALED AND DATED ELECTRONICALLY

STATE OF MISSOURI

TIMOTHY D. CROCKETT

PROFESSIONAL ENGINEER

NUMBER 00004000775

EXPIRATION DATE 03/31/2022

MISSOURI LICENSE - 2004000775

PREPARED BY:

CROCKETT

ENGINEERING CONSULTANTS

1000 W. High Blvd. Ste. 101

Clinton, MO 64601

(573) 445-0292

www.crockettengineering.com

Crockett Engineering Consultants, LLC

Missouri License #00004000775

OWNER:

KANSAS CITY SURGICAL AND DENTAL LLC

CROCKETT LOHMEYER DENT

(816) 886-8242

PUBLIC WATER MAIN EXTENSION

KANSAS CITY SURGICAL & DENTAL OFFICE

SECTION 20, TOWNSHIP 48 NORTH, RANGE 31 WEST

LEE'S SUMMIT, JACKSON COUNTY, MISSOURI

DRAWING INCLUDES:

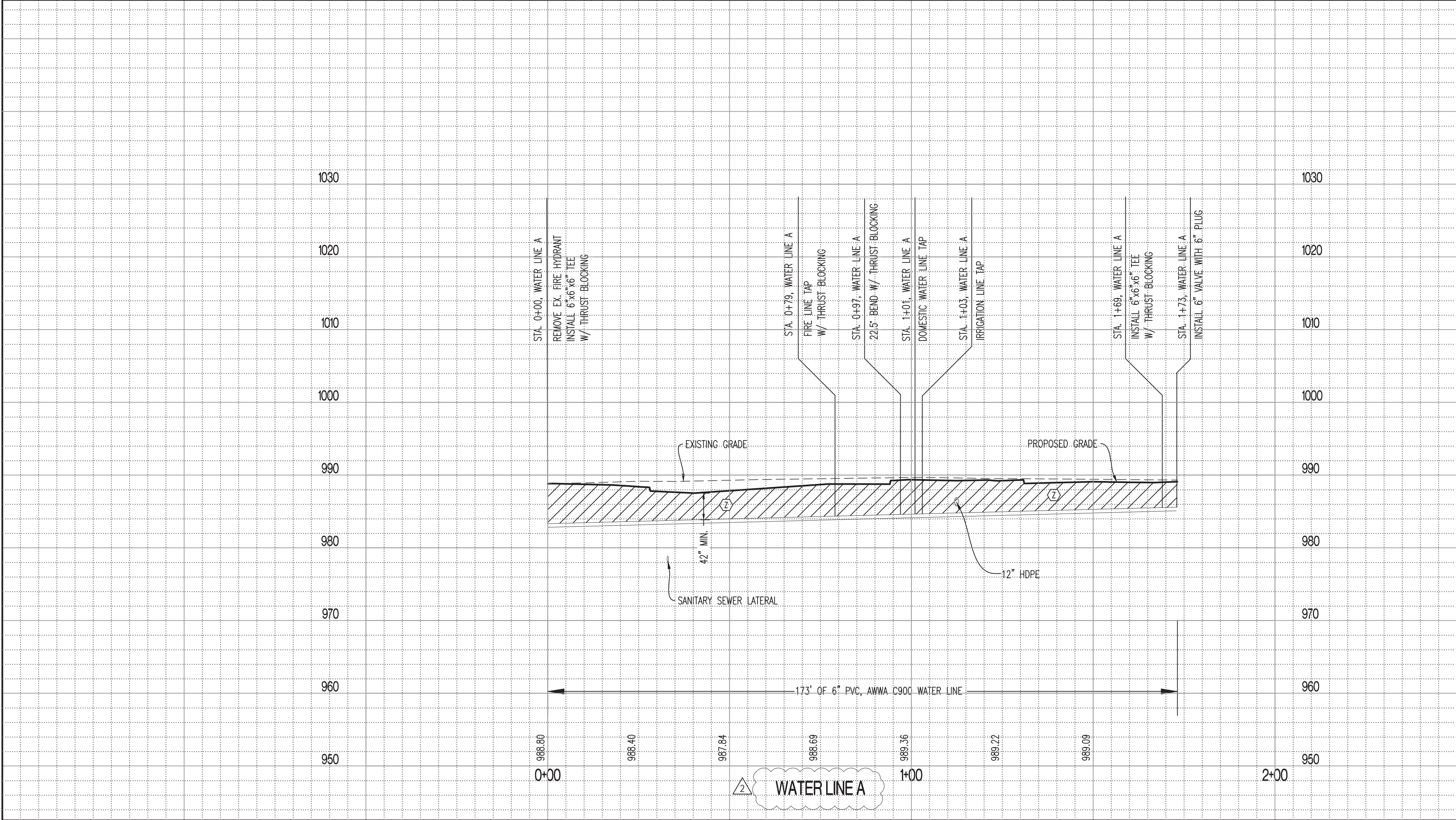
SITE / UTILITY PLAN & WATER LINE A PROFILE

DESIGNED: TDC

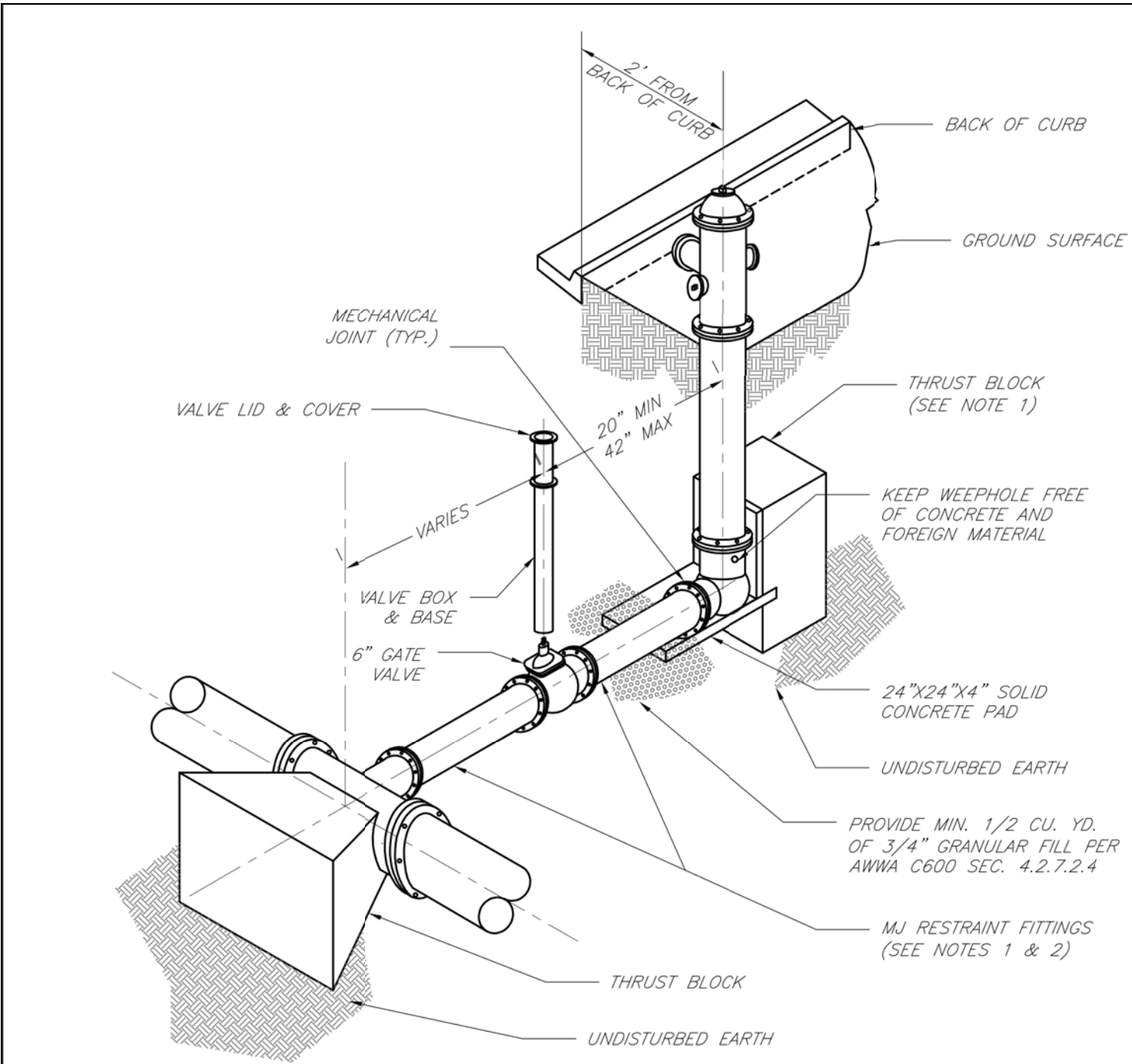
DRAWN: JEE

PROJECT NO.: 190164

SHEET: CE 1

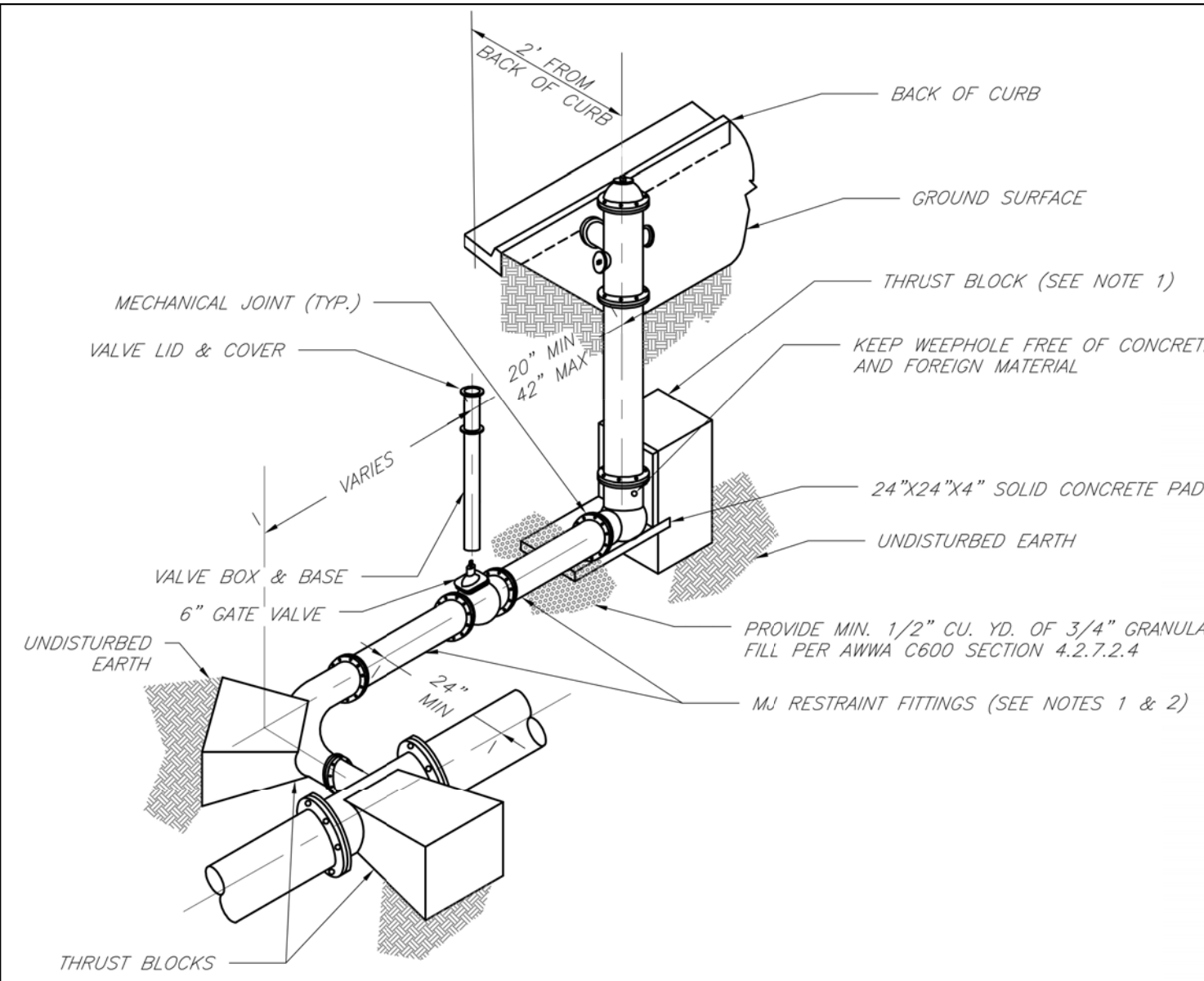


**RECORD DRAWING**  
THE INFORMATION PROVIDED ON THIS DRAWING CONFORMS TO CONSTRUCTION RECORDS; IT IS NOT INTENDED FOR CONSTRUCTION, IMPLEMENTATION OR RECORDING PURPOSES; AND IS SOLELY BASED ON INFORMATION PROVIDED BY EMERY SAPP AND SONS, INC. ALL DATA IS AS DESIGNED AND HAS NOT BEEN FIELD VERIFIED.  
DATE: 11/10/2022  
CERTIFIED BY: TIM CROCKETT  
TITLE: OWNER  
FIRM: CROCKETT ENGINEERING CONSULTANTS



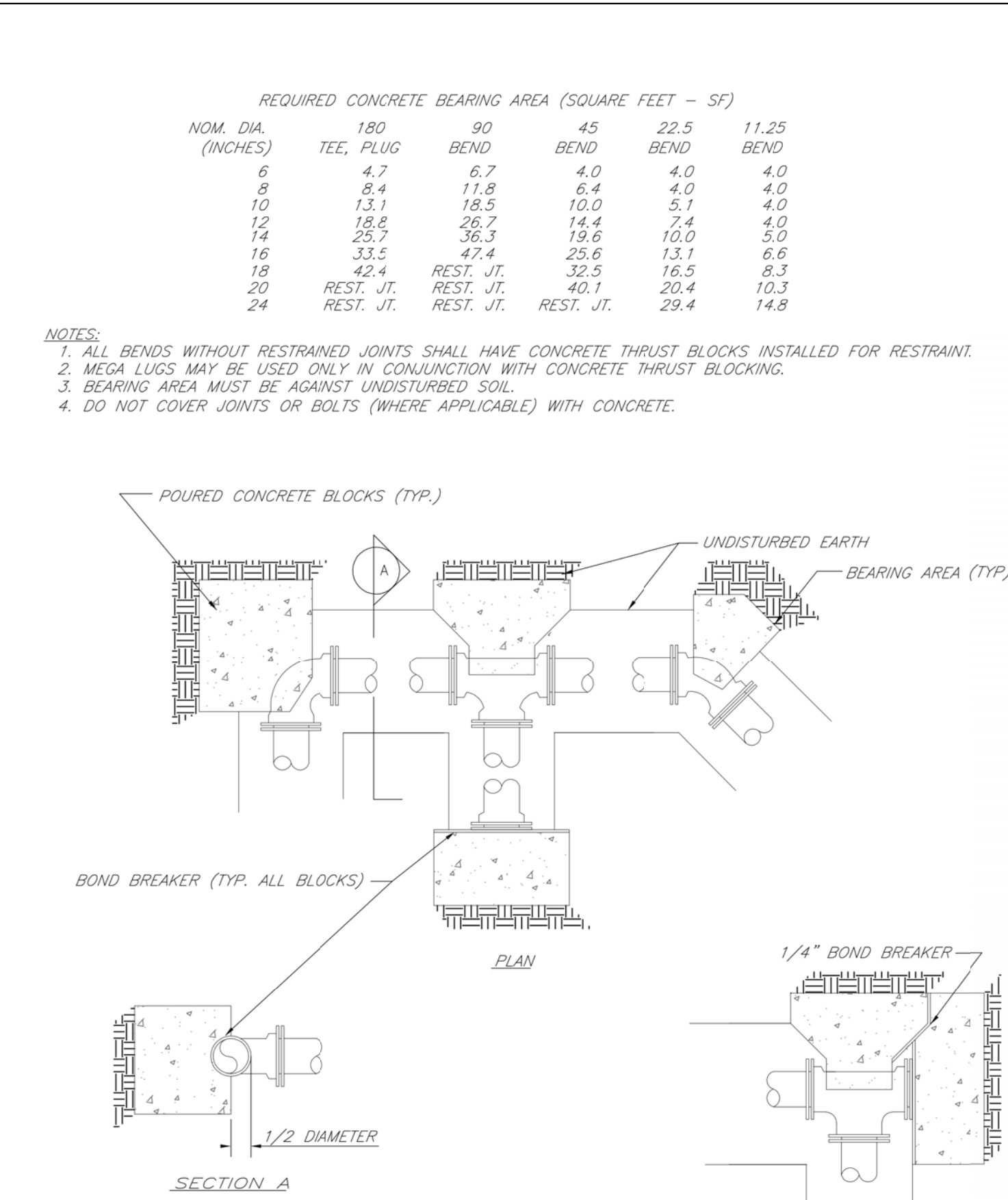
NOTES:

1. WHEN RETAINER GLANDS ARE USED IN LIEU OF MECHANICAL JOINT (MJ) RESTRAINT FITTINGS, HORIZONTAL THRUST BLOCKS ARE REQUIRED.
2. GATE VALVE MAY BE BOLTED DIRECTLY TO MJ RESTRAINT TEE.
3. SEE APPROVED PRODUCTS LIST FOR WATER UTILITIES FOR FIRE HYDRANT, VALVES, VALVE BOX LID, AND COVER.
4. BOTTOM HYDRANT FLANGE SHALL BE 2" TO 6" ABOVE FINISHED GRADE.
5. FOR STREETS WITHOUT CURBS FIRE HYDRANTS SHALL BE PLACED WITHIN 1 FOOT OF THE R/W LINE, BUT NOT MORE THAN 10" FROM EDGE OF PAVEMENT. FIRE HYDRANT SHALL NOT BE PLACED IN BOTTOM OF DITCH.
6. HYDRANT SHALL BE ROTATED AS DIRECTED BY INSPECTOR.



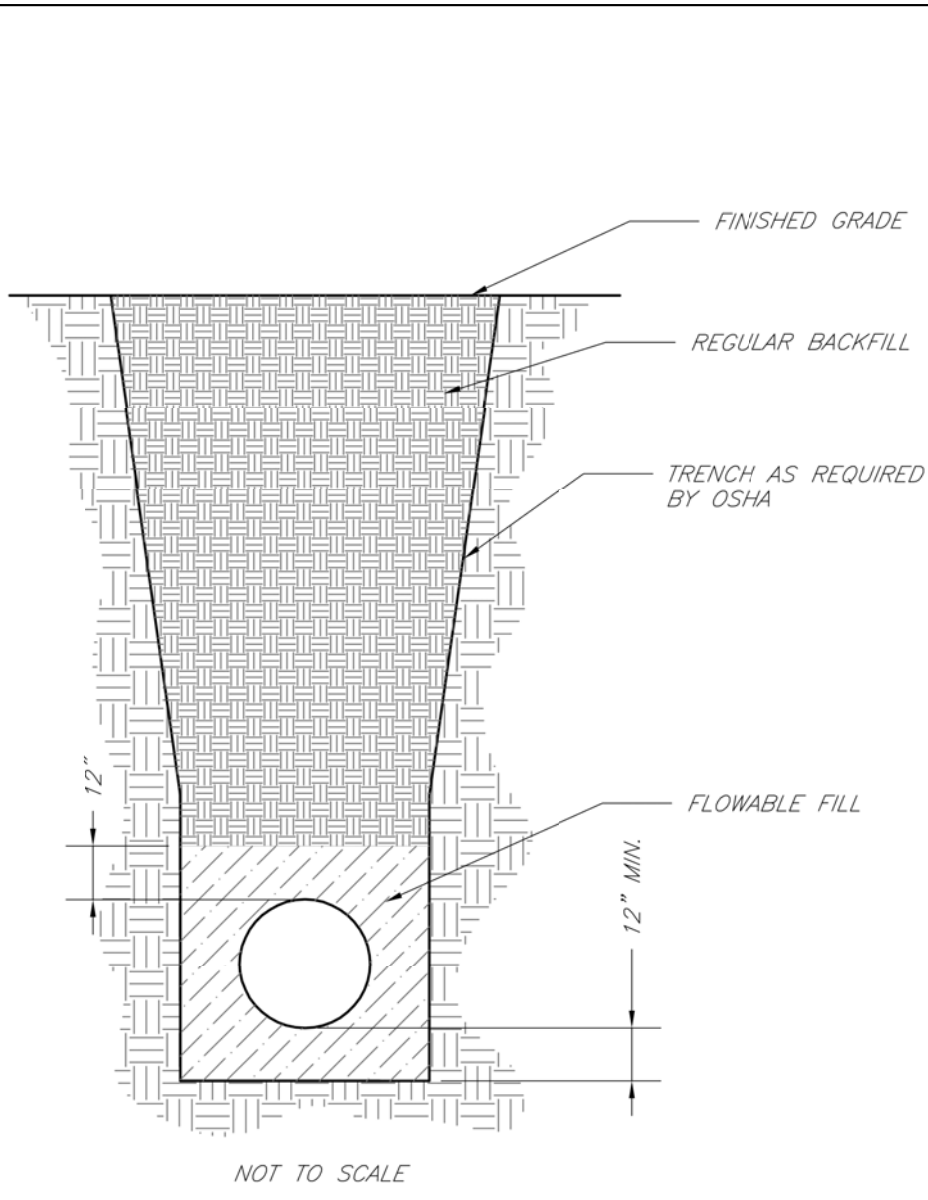
NOTES:

1. WHEN RETAINER GLANDS ARE USED IN LIEU OF MECHANICAL JOINT (MJ) RESTRAINT FITTINGS, HORIZONTAL THRUST BLOCKS ARE REQUIRED.
2. GATE VALVE MAY BE BOLTED DIRECTLY TO MJ RESTRAINT TEE.
3. SEE APPROVED PRODUCTS LIST FOR WATER UTILITIES FOR FIRE HYDRANT, VALVES, VALVE BOX LID, AND COVER.
4. BOTTOM HYDRANT FLANGE SHALL BE 2" TO 6" ABOVE FINISHED GRADE.
5. FOR STREETS WITHOUT CURBS FIRE HYDRANTS SHALL BE PLACED WITHIN 1 FOOT OF THE R/W LINE, BUT NOT MORE THAN 10" FROM EDGE OF PAVEMENT. FIRE HYDRANT SHALL NOT BE PLACED IN BOTTOM OF DITCH.
6. HYDRANT SHALL BE ROTATED AS DIRECTED BY INSPECTOR.



NOTES:

1. ALL BENDS WITHOUT RESTRAINED JOINTS SHALL HAVE CONCRETE THRUST BLOCKS INSTALLED FOR RESTRAINT.
2. MEGA LUGS MAY BE USED ONLY IN CONJUNCTION WITH CONCRETE THRUST BLOCKING.
3. BEARING AREA MUST BE AGAINST UNDISTURBED SOIL.
4. DO NOT COVER JOINTS OR BOLTS (WHERE APPLICABLE) WITH CONCRETE.



NOTES:

1. FLOWABLE FILL SHALL MEET THE REQUIREMENTS OF THE CITY OF LEE'S SUMMIT DESIGN AND CONSTRUCTION MANUAL.
2. REGULAR BACKFILL ABOVE THE TRENCH CHECK SHALL BE FREE OF DEBRIS, ORGANIC MATTER, AND STONES > 6" IN ANY DIMENSION.
3. TOP OF FLOWABLE BACKFILL SHALL EXTEND 12" ABOVE THE TOP OF THE PIPE.
4. LENGTH OF TRENCH CHECK SHALL BE A MINIMUM OF 12".

LS

LEE'S SUMMIT

MISSOURI

PUBLIC WORKS ENGINEERING DIVISION | 220 SE GREEN STREET | LEE'S SUMMIT, MO 64063

HYDRANT INSTALLATION – STRAIGHT SET

Date: 02/13

Drawn By: JN

Checked By: DL

FILE: WAT-7

Rev: 1/14

LS

LEE'S SUMMIT

MISSOURI

PUBLIC WORKS ENGINEERING DIVISION | 220 SE GREEN STREET | LEE'S SUMMIT, MO 64063

HYDRANT WITH 90 DEGREE BEND

Date: 02/13

Drawn By: JN

Checked By: DL

FILE: WAT-8

Rev: 1/14

LS

LEE'S SUMMIT

MISSOURI

PUBLIC WORKS ENGINEERING DIVISION | 220 SE GREEN STREET | LEE'S SUMMIT, MO 64063

HORIZONTAL THRUST BLOCKS

Date: 02/13

Drawn By: JN

Checked By: DL

FILE: WAT-1

Rev: 1/14

LS

LEE'S SUMMIT

MISSOURI

PUBLIC WORKS ENGINEERING DIVISION | 220 SE GREEN STREET | LEE'S SUMMIT, MO 64063

TRENCH CHECK

Date: 02/13

Drawn By: JN

Checked By: DL

FILE: WAT-6

Rev: 1/14

RECORD DRAWING

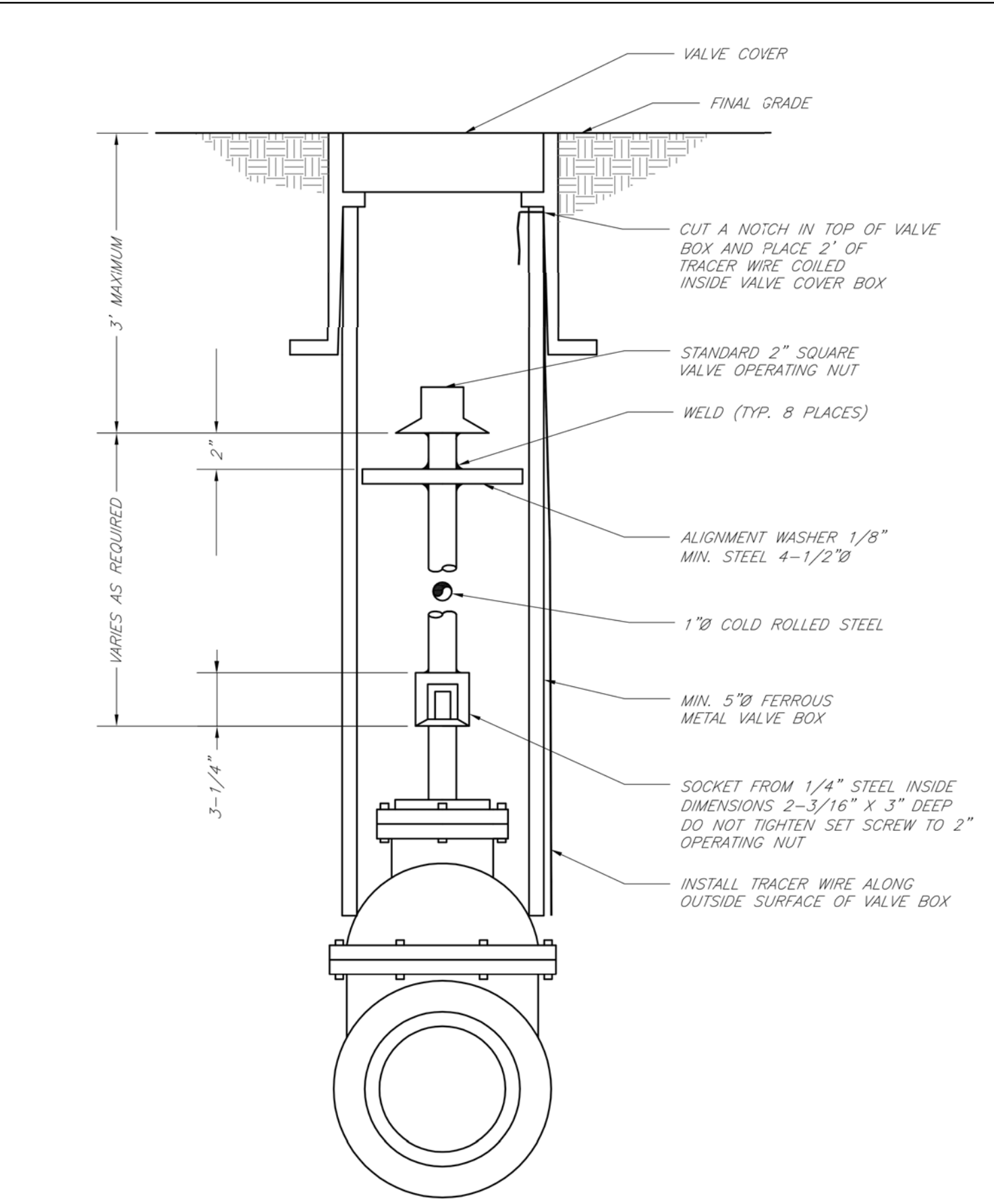
THE INFORMATION PROVIDED ON THIS DRAWING CONFORMS TO CONSTRUCTION RECORDS; IT IS NOT INTENDED FOR CONSTRUCTION, IMPLEMENTATION OR RECORDING PURPOSES; AND IS SOLELY BASED ON INFORMATION PROVIDED BY EMERY SAPP AND SONS, INC. ALL DATA IS AS DESIGNED AND HAS NOT BEEN FIELD VERIFIED.

DATE: 11/10/2022

CERTIFIED BY: TIM CROCKETT

TITLE: OWNER

FIRM: CROCKETT ENGINEERING CONSULTANTS



LS

LEE'S SUMMIT

MISSOURI

PUBLIC WORKS ENGINEERING DIVISION | 220 SE GREEN STREET | LEE'S SUMMIT, MO 64063

VALVE STEM EXTENSION AND VALVE BOX

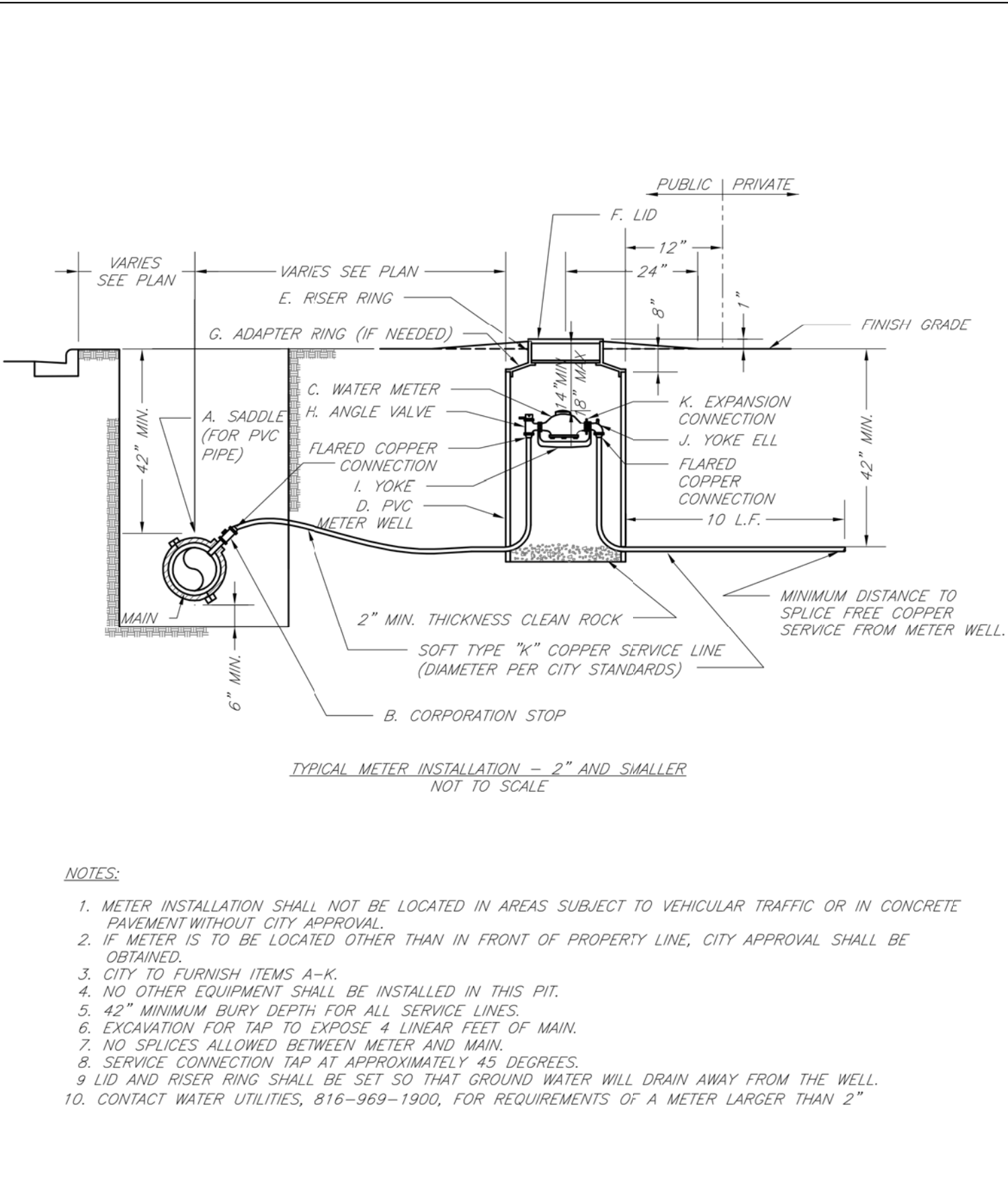
Date: 02/13

Drawn By: JN

Checked By: DL

FILE: WAT-9

Rev: 1/14



NOTES:

1. METER INSTALLATION SHALL NOT BE LOCATED IN AREAS SUBJECT TO VEHICULAR TRAFFIC OR IN CONCRETE PAVEMENT WITHOUT CITY APPROVAL.
2. IF METER IS TO BE LOCATED OTHER THAN IN FRONT OF PROPERTY LINE, CITY APPROVAL SHALL BE OBTAINED.
3. CITY TO FURNISH ITEMS A-K.
4. NO OTHER EQUIPMENT SHALL BE INSTALLED IN THIS PIT.
5. 42" MINIMUM BURY DEPTH FOR ALL SERVICE LINES.
6. EXCAVATION FOR TAP TO EXPOSE 4' LINEAR FEET OF MAIN.
7. NO SPLICES ALLOWED BETWEEN METER AND MAIN.
8. SERVICE CONNECTION TAP AT APPROXIMATELY 45 DEGREES.
9. LID AND RISER RING SHALL BE SET SO THAT GROUND WATER WILL DRAIN AWAY FROM THE WELL.
10. CONTACT WATER UTILITIES, 816-969-1900, FOR REQUIREMENTS OF A METER LARGER THAN 2"

LS

LEE'S SUMMIT

MISSOURI

PUBLIC WORKS ENGINEERING DIVISION | 220 SE GREEN STREET | LEE'S SUMMIT, MO 64063

SERVICE CONNECTION/METER WELL

Date: 02/13

Drawn By: JN

Checked By: DL

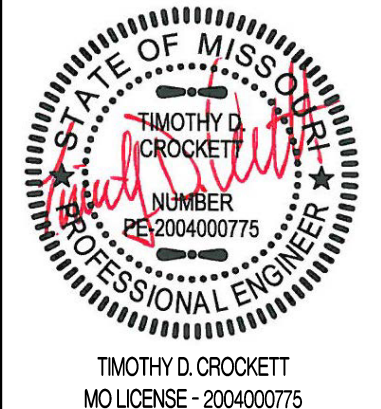
FILE: WAT-11

Rev: 1/14

REVISIONS:

NO.	DATE
ORIGINAL	07/03/2019
1	09/04/2019
2	09/17/2019

THIS SHEET HAS BEEN SIGNED, SEALED AND DATED ELECTRONICALLY



PREPARED BY:  
**CROCKETT**  
ENGINEERING CONSULTANTS  
10001 Shawnee Mission Blvd.  
Suite 100  
Shawnee, MO 64063  
(816) 447-0992  
www.crockettengineering.com  
Crockett Engineering Consultants, LLC  
Missouri Certificate of Authority #0003101

OWNER:  
KANSAS CITY SURGICAL AND DENTAL LLC  
GREGORY LOHMEYER, D.D.S.  
MO (816) 906-6242

PUBLIC WATER MAIN EXTENSION  
KANSAS CITY SURGICAL & DENTAL OFFICE  
SECTION 20, TOWNSHIP 48 NORTH, RANGE 31 WEST  
LEE'S SUMMIT, JACKSON COUNTY, MISSOURI

DRAWING INCLUDES:

WATER LINE DETAILS

DESIGNED: TDC

DRAWN: JEE

PROJECT NO.: 190164

SHEET: CE 2