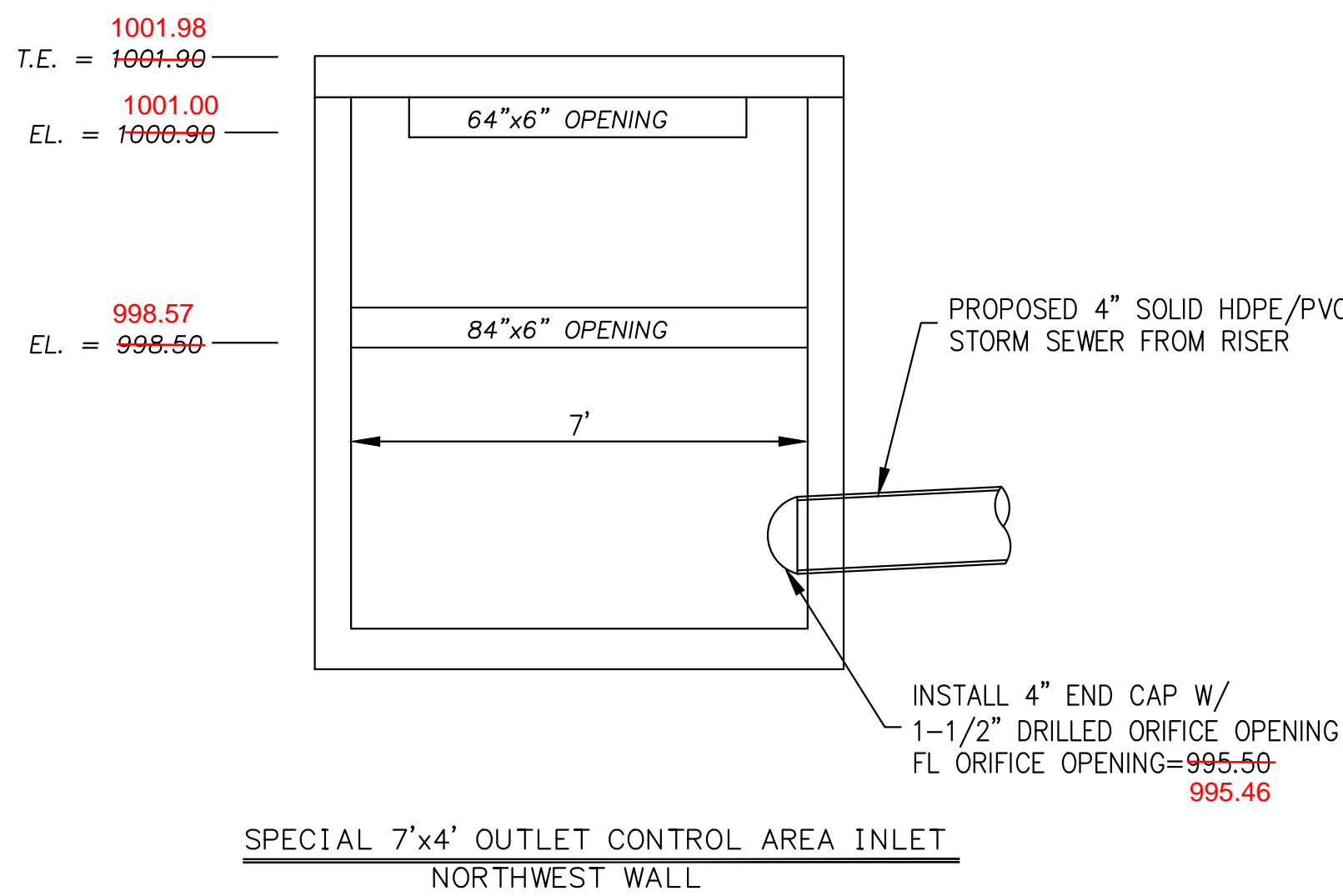
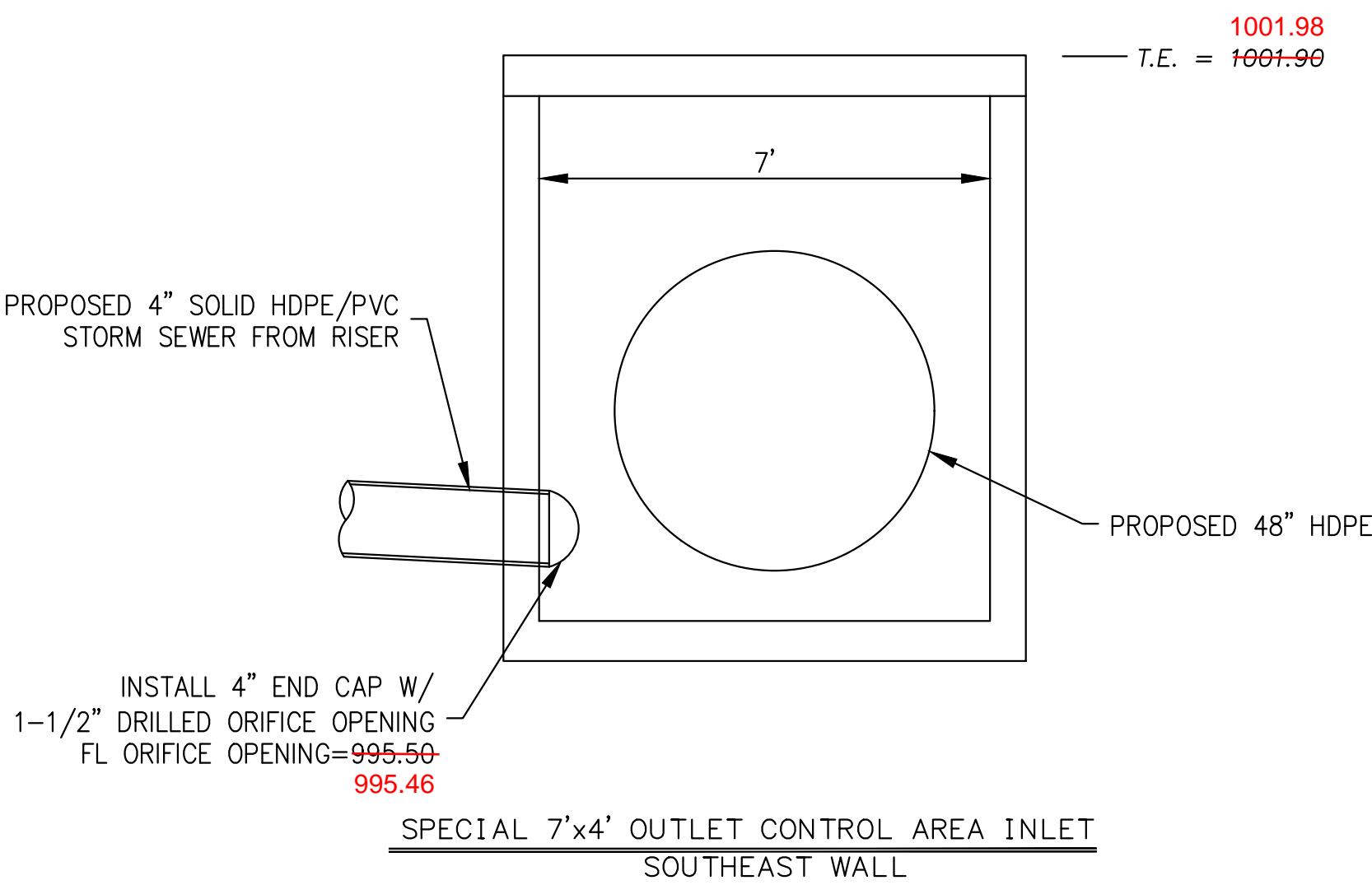
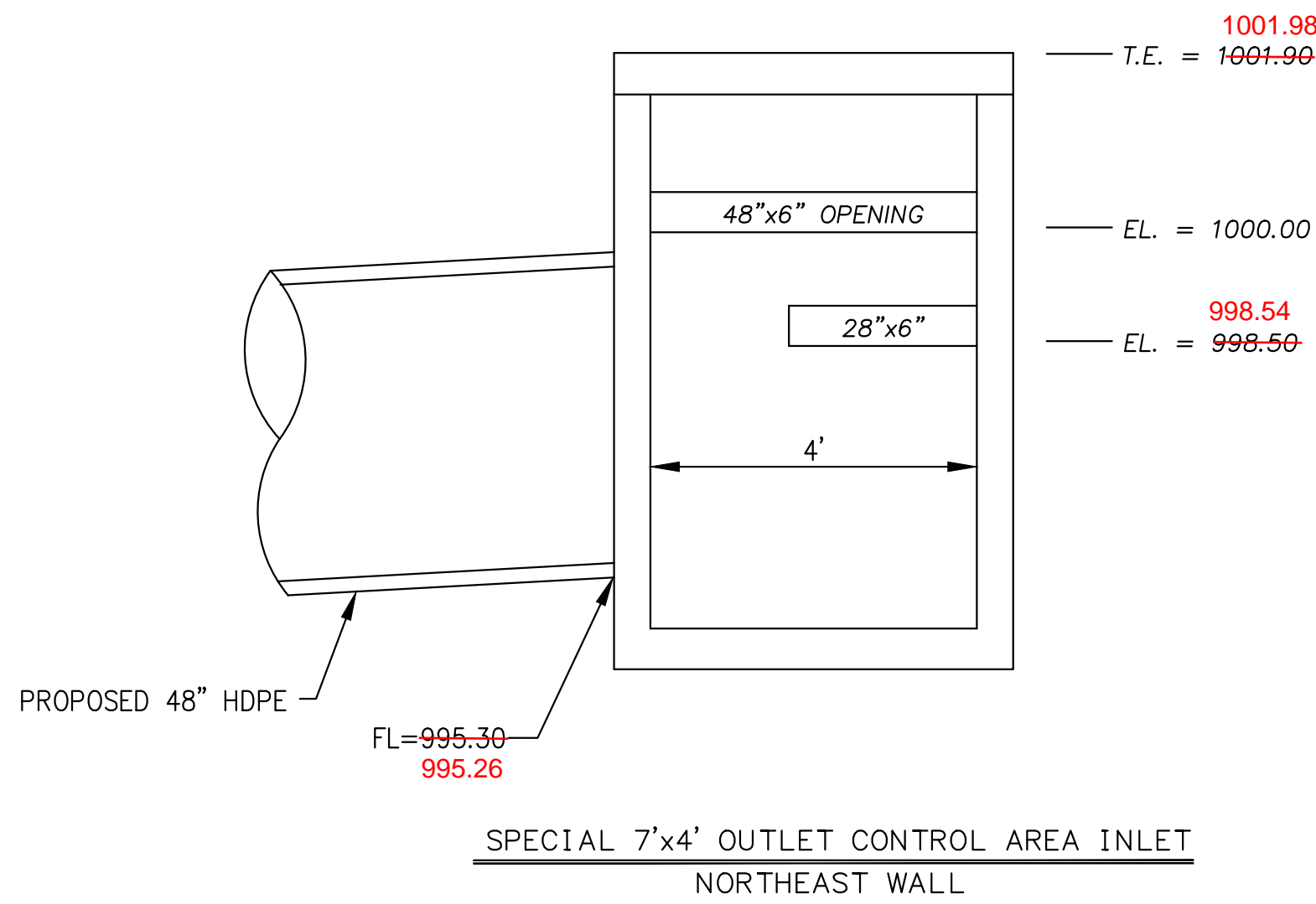
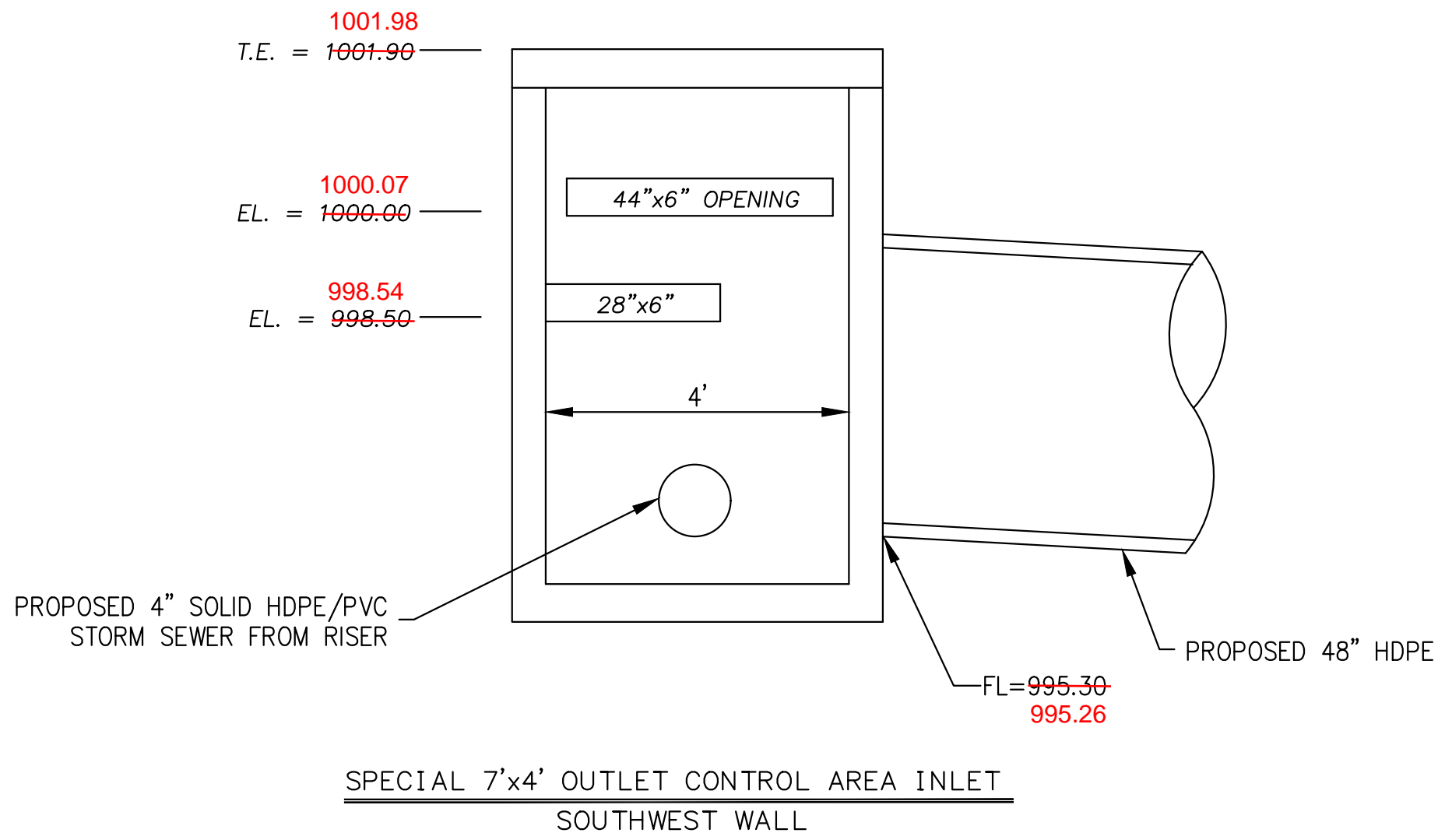
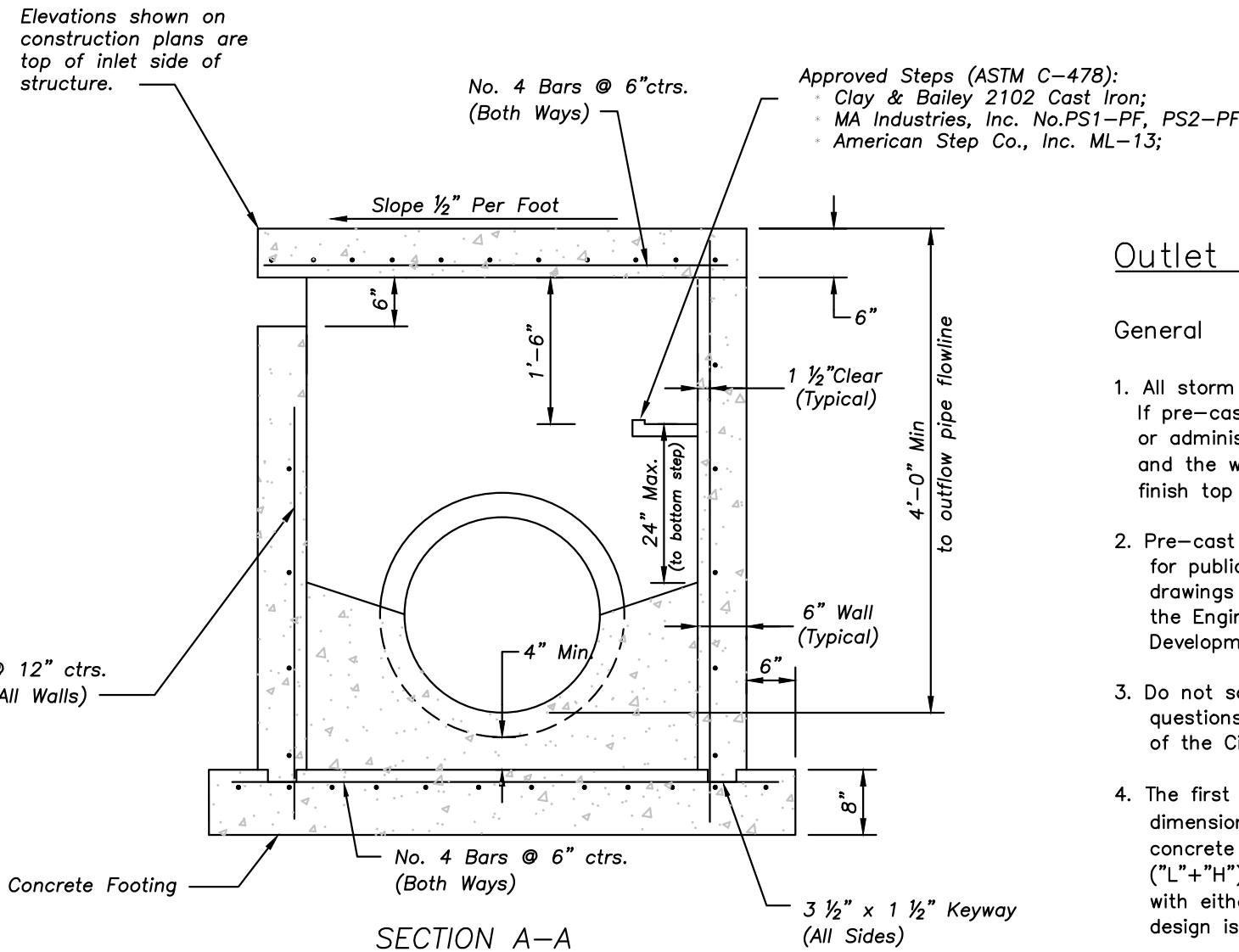
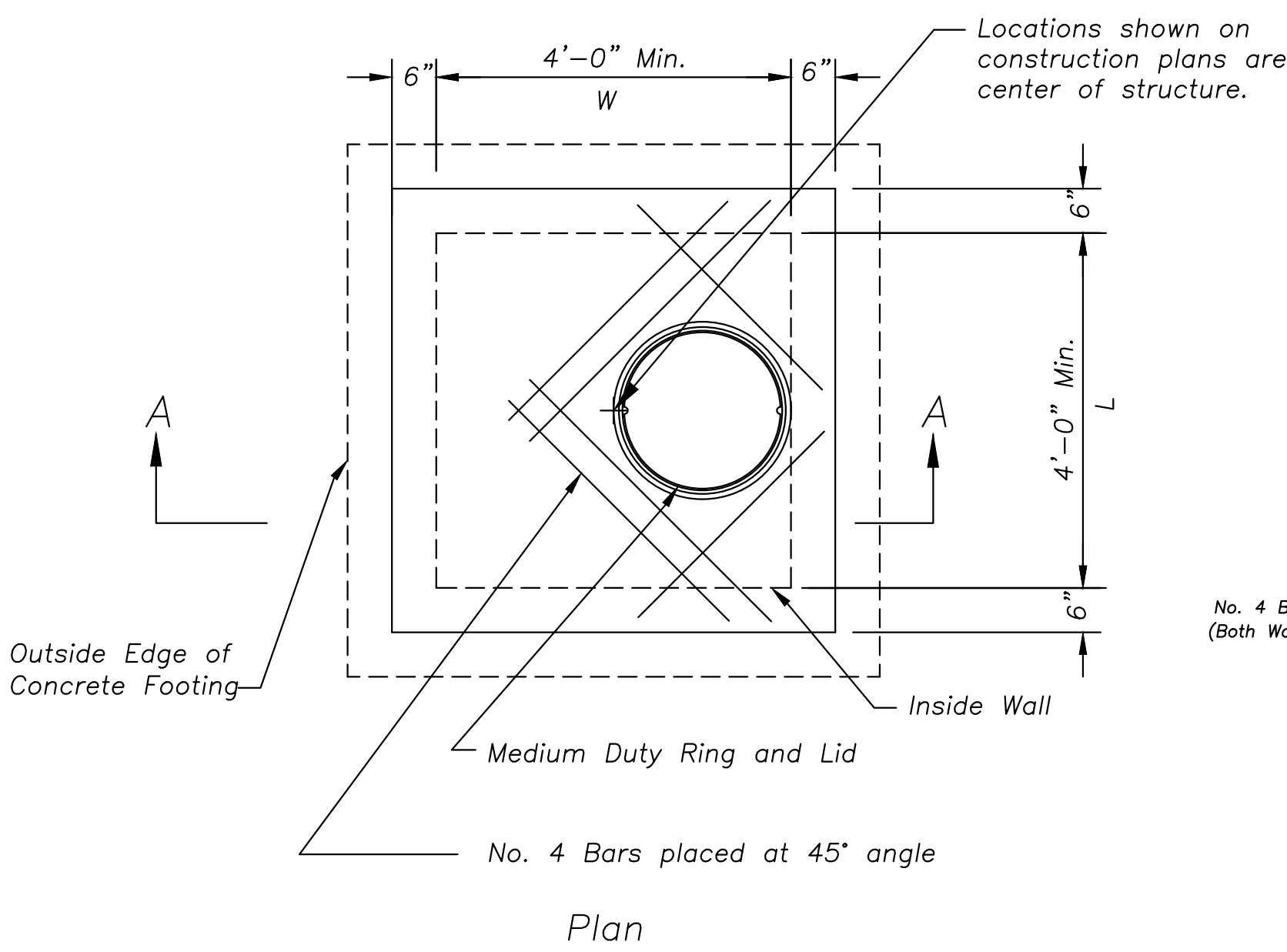


\\PHILIPS-SERVER\Projects\PHILIPS39\Drawings\Permit Plans\UTERATION BUSStk.dwg Layout2 Apr 27, 2022 12:15pm Daniel Finn



“AS-BUILT”

DATED: 11/3/22 BY: DAF



OUTLET CONTROL DETAIL
SCALE: N.T.S.

Outlet Control Structure Notes

General

- All storm sewer structures shall be pre-cast or poured in place. If pre-cast structures are used for publicly financed, maintained or administered construction, the tops shall be poured in place and the wall steel shall be left exposed to a height 2" below the finish top elevation, or as directed by the City Engineer.
- Pre-cast shop drawings are to be approved by the City Engineer for publicly financed or administered projects. Pre-cast shop drawings for privately financed projects are to be submitted to the Engineering Services Division of the Planning and Development Services Department.
- Do not scale these drawings for dimensions or clearances. Any questions regarding dimensions shall be brought to the attention of the City Engineer prior to construction.
- The first dimension listed in the construction notes is the "L" dimension. The second dimension is the "W" dimension. The concrete thickness and reinforcement shown is for boxes with ("L"+"H") and ("W"+"H") less than or equal to 20. For boxes with either of these calculations greater than 20, a special design is required.

Concrete

- Concrete used in this work shall be KCMWB4K, as approved by the Kansas City Metropolitan Materials Board, and shall meet the requirements of the **Lee's Summit** Municipal Code.
- Concrete construction shall meet the applicable requirements of Standard Specifications for State Road and Bridge Construction, Kansas Department of Transportation, latest edition, except as modified in the **Lee's Summit** Municipal Code.

Reinforcing Steel

- Reinforcing steel shall be new billet, minimum Grade 60 as per ASTM A615, and shall be bent cold.
- All dimensions relative to reinforcing steel are to centerline of bars. 2" clearance shall be provided throughout unless noted otherwise. Tolerance of $\pm \frac{1}{8}$ " shall be permitted.
- All lap splices not shown shall be a minimum of 40 bar diameters in length.

- Inlet floors shall be shaped with non-reinforced concrete inverts to provide smooth flow.
- Bevel all exposed edges with $\frac{3}{4}$ " triangular molding.
- All reinforcing steel shall be supported on fabricated steel bar supports @ 3'-0" maximum spacing.
- All dowels shall be accurately placed and securely tied in place prior to placement of bottom slab concrete. Sticking of dowels into fresh or partially hardened concrete will not be acceptable.

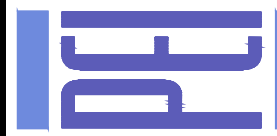
Construction

- The bottom slab shall be at least 24 hours old before placing sidewall concrete. All sidewall forms shall remain in place a minimum of 24 hours after sidewalls are poured before removal, and after removal shall be immediately treated with membrane curing compound.
- Pipe connections to pre-cast structures shall have a minimum of 6" of concrete around the entire pipe within 2' of the structure.
- Material selection and compaction requirements for backfill around structures shall be as specified in the Manual of Infrastructure Standards, as promulgated by the City Engineer.



PHILIPS ENGINEERING, INC.
1270 N. Winchester
Olathe, Kansas 66061
(913) 393-1155
Fax (913) 393-1145
www.philipsengineering.com

PLANNING
ENGINEERING
IMPLEMENTATION



OUTLET STRUCTURE DETAILS

MARKET STREET CENTER
M291 AND SW MARKET STREET

CITY OF LEE'S SUMMIT, JACKSON COUNTY, MISSOURI

PROJECT NO. 210639		No.	Date	Revisions:		
DATE:	10-14-21	DRAWN	1. 03-16-22	REVISED PER CITY COMMENTS	SNH DAF	
CHECKED:	DAF	APPROVED	JDC	2. 04-06-22	REVISED PER CITY COMMENTS	SNH DAF
CORPORATE AUTHORIZATION		3. 04-15-22		REVISED PER CITY COMMENTS	SNH DAF	
LAND SURVEYING	LS-82					
ENGINEERING	E-361					
CERTIFICATE OF AUTHORIZATION						
LAND SURVEYING	200701028					
ENGINEERING	200700339					

SHEET

C6.1