

STANDARD DETAILS

CITY OF LEE'S SUMMIT, MO

LEE'S SUMMIT, JACKSON COUNTY, MO

Project Name: JUNCTION BOX DETAIL

Drawn By: MJP

Checked By: DK

Date: 04/13

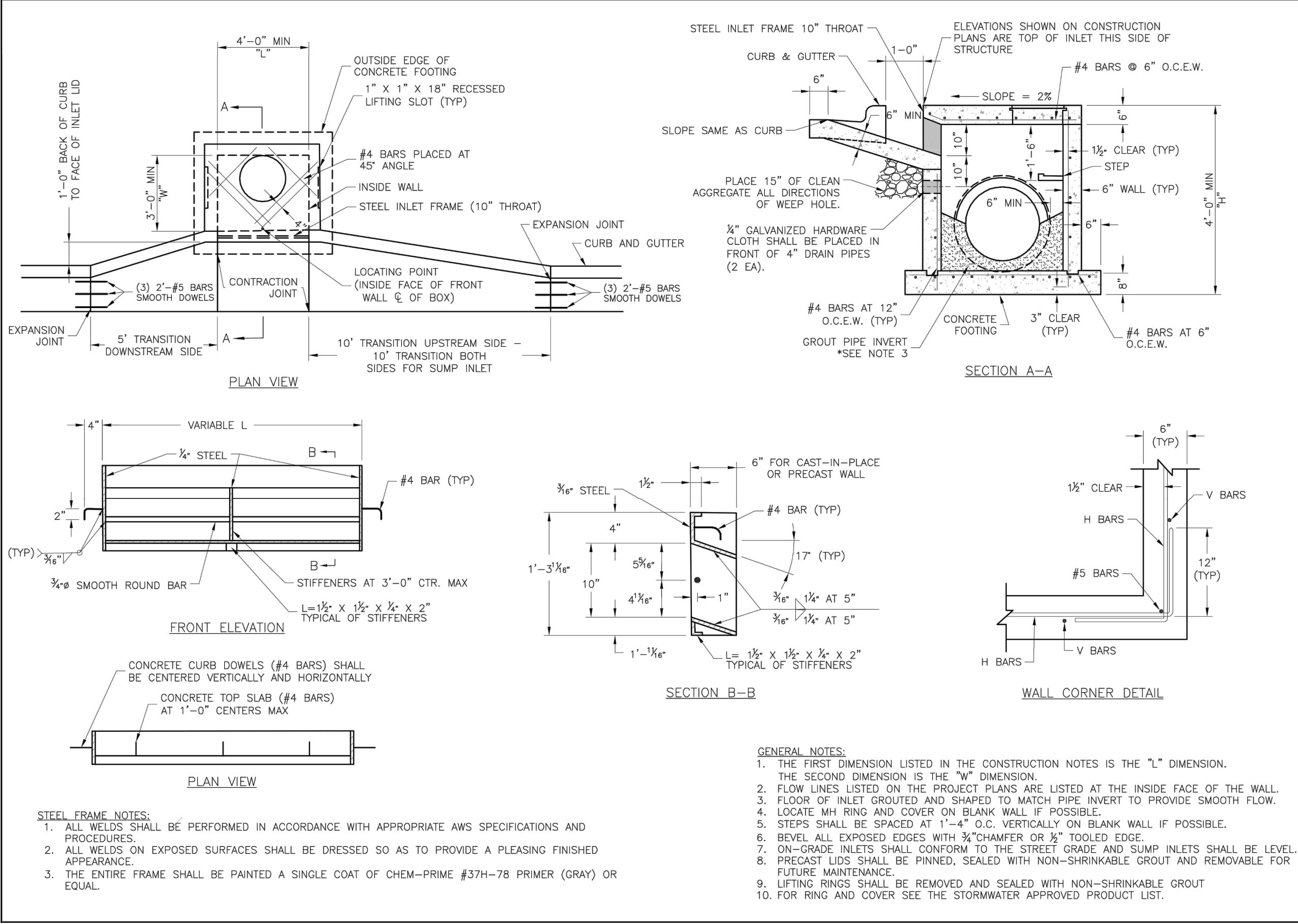
Proj. #

STM-3

LEE'S SUMMIT

MISSOURI

PUBLIC WORKS ENGINEERING DIVISION | 1200 DE GREEN STREET | LEE'S SUMMIT, MO 64083



STANDARD DETAILS

CITY OF LEE'S SUMMIT, MO

LEE'S SUMMIT, JACKSON COUNTY, MO

Project Name: CURB INLET DETAIL

Drawn By: MJP

Checked By: DK

Date: 04/13

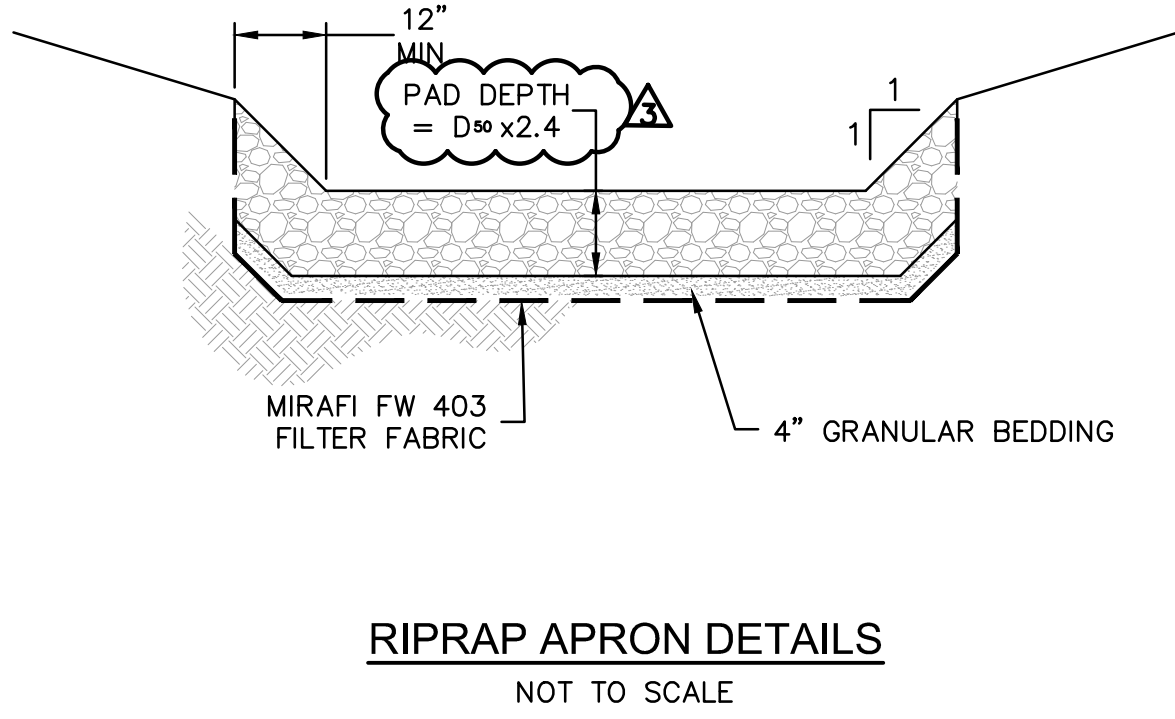
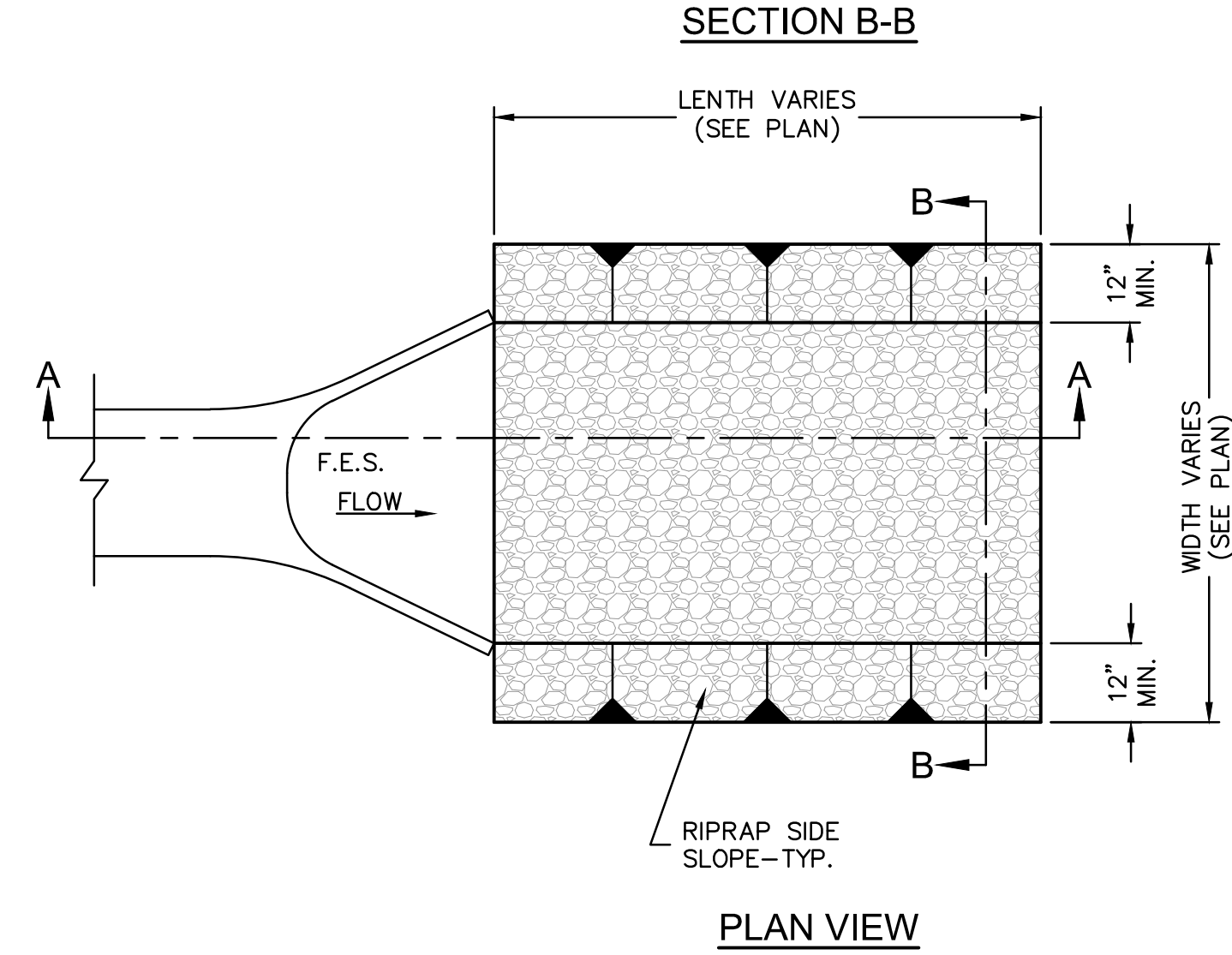
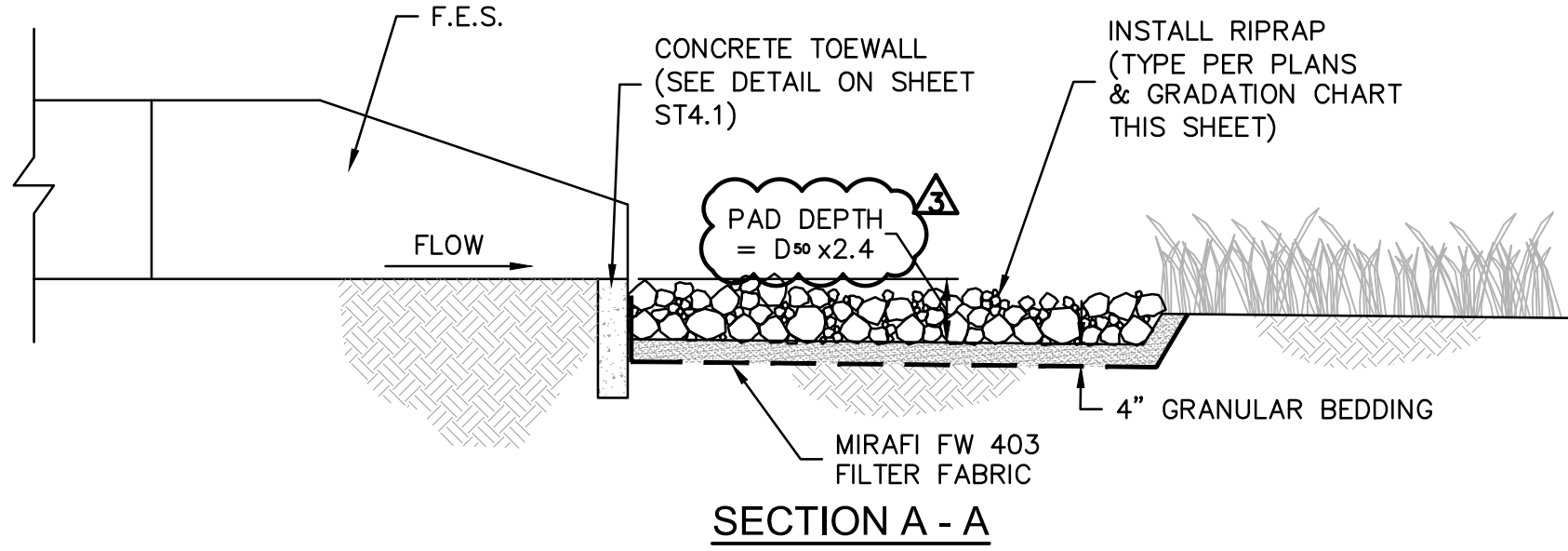
Proj. #

STM-1

LEE'S SUMMIT

MISSOURI

PUBLIC WORKS ENGINEERING DIVISION | 1200 DE GREEN STREET | LEE'S SUMMIT, MO 64083



- NOTES:
- RIPRAP SHALL BE PLACED IN SUCH A MANNER AS TO AVOID SEGREGATION OF VARIOUS SIZES OF ROCK, AND DISTRIBUTED SO THAT THERE WILL BE NO LARGE ACCUMULATION OF EITHER THE LARGER OR SMALLER SIZES OF STONE.
 - INDIVIDUAL ROCKS SHALL BE PLACED IN TIGHT CONTACT WITH ONE ANOTHER IN SUCH A WAY TO PRODUCE THE LEAST AMOUNT OF VOID SPACES.
 - RIPRAP SHALL BE SOLID, UNFRACTURED ROCK OR CONCRETE, BULKY IN SHAPE WITH SHARP, ANGULAR EDGES.
 - GRANULAR BEDDING SHALL CONSIST OF 1" CLEAN, FRACTURED LIMESTONE.
 - INSTALL FILTER FABRIC ACCORDING TO MANUFACTURER'S RECOMMENDATIONS.

CLASSIFICATION & GRADATION OF RIPRAP & RIVER GRAVEL			
RIP-RAP DESIGNATION	PERCENT (%) SMALLER THAN GIVEN BY WEIGHT	INTERMEDIATE ROCK DIMENSION (INCHES)	*D ₅₀ (INCHES)
CLASS III	85-100	18	10
	50-85	13	
	15-50	9.5	
	2-15	7	

*D₅₀ = MEAN PARTICLE SIZE (INTERMEDIATE DIMENSION).

AS-BUILT
11/01/2022

SE OLDHAM PARKWAY & SE PRINCETON DRIVE STORM WATER DETAILS		THE PRINCETON SENIOR LIVING SE OLDHAM PARKWAY		LEE'S SUMMIT, MISSOURI	
				2019	