

FEATURES & SPECIFICATIONS

INTENDED USE — Only customers in USA are eligible for this program.

Square Straight Steel is a general purpose light pole for up to 25-foot mounting heights. This pole provides a robust yet cost effective option for mounting area lights and floodlights.

CONSTRUCTION — **Pole Shaft:** The pole shaft is of uniform dimension and wall thickness and is made of a weldable-grade, hot-rolled, commercial-quality steel tubing with a minimum yield of 55 KSI (11-gauge, .12"), or 50 KSI (7-gauge, .18"). Shaft is one-piece with a full-length longitudinal high-frequency electric resistance weld. Uniformly square in cross-section with flat sides, small corner radii and excellent torsional qualities. Available shaft widths are 4" and 5".

Pole Top: A flush non-metallic black top cap is provided for all poles ordered without a tenon.

Handhole: A reinforced handhole with grounding provision is provided at 18" from the base on side A. Every handhole includes a cover and cover attachment hardware. The handhole has a nominal dimension of 2.5" x 5".

Base Cover: A color matched durable ABS plastic two-piece full base cover, is provided with each pole assembly.

Anchor Base/ Bolts: Anchor base is fabricated from steel that meets ASTM A36 standards. Anchor bolts are manufactured to ASTM F1554 Standards grade 55, (55 KSI minimum yield strength and tensile strength of 75-95 KSI). Top threaded portion (nominal 12") is hot-dipped galvanized per ASTM A-153.

HARDWARE — All structural fasteners are high-strength galvanized carbon steel. All non-structural fasteners are galvanized or zinc-plated carbon steel or stainless steel.

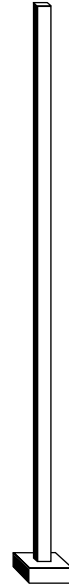
FINISH — Exterior parts are protected by a TGIC or Urethane polyester powder coat finish that provides superior resistance to corrosion and weathering. A tightly controlled multi-stage process ensures superior adhesion as well as a minimum finish thickness of 3 mils. Extra durable standard powder-coat finishes include Dark Bronze, Black and Natural Aluminum colors.

WARRANTY — 1-year limited warranty. Complete warranty terms located at:

www.acuitybrands.com/support/warranty/terms-and-conditions

NOTE: Actual performance may differ as a result of end-user environment and application. Specifications subject to change without notice.

Catalog Number
Notes
Type



SSS QS

SQUARE STRAIGHT STEEL – QUICK SHIP

ORDERING INFORMATION

Example: SSS QS 20 4C DM19AS DDBXD

SSS	QS					
Series	Quick Ship	Pole Length (FT)	Nominal shaft size/ wall thickness ¹	Mounting	Finish	Options
SSS	QS	10 10' 12 12' 14 14' 16 16' 18 18' 20 20' 25 25'	4C 4" / 11 Gauge 4G 4" / 7 Gauge 5C 5" / 11 Gauge 5G 5" / 7 Gauge	Tenon mounting PT Open top (includes top cap) T20 2-3/8" O.D. (2" NPS) DSX/RSX Drill mounting ² DM19AS 1 at 90° DM28AS 2 at 180° DM29AS 2 at 90° DM39AS 3 at 90° DM49AS 4 at 90° ESX Drill mounting ² DM19ESX 1 at 90° DM28ESX 2 at 180° DM29ESX 2 at 90° DM39ESX 3 at 90° DM49ESX 4 at 90°	DDBXD Dark bronze DBLXD Black DNAXD Natural aluminum	L/AB Less anchor bolts (Include when anchor bolts are not provided)

PROGRAM RULES:

- Only options listed in the ordering tree are valid for the Quick Ship program.
- Nomenclature must include "QS" after "SSS" to be qualified for Quick Ship.
Example: SSS QS 20 4C DM19AS DDBXD
- Total order quantity cannot exceed 10 poles.
- Anchor bolts will be shipped separately.
- Quick Ship orders cannot have "Not Before Date" or "Ship Date".
- Quick ship orders cannot have standard pole lines.
- All pole orders must include "Call Before Number" to avoid delays.

NOTES:

- Wall thickness will be signified with a "C" (11 Gauge) or a "G" (7-Gauge) in nomenclature. "C" - 0.12" | "G" - 0.18".
- Refer to the luminaire spec sheet for the correct drilling template pattern and orientation compatibility.

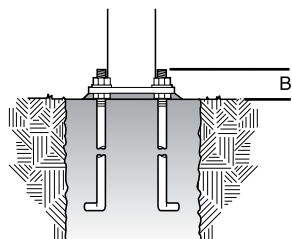
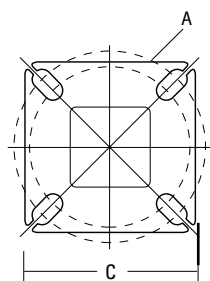
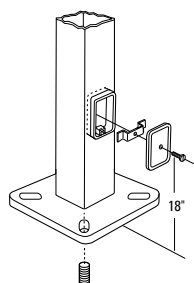
Square Straight Steel Poles – QUICK SHIP

TECHNICAL INFORMATION — EPA (ft ²) with 1.3 gust													
Catalog Number	Nominal Shaft Length (ft.)	Pole Shaft Size (Base in. x Top in. x ft.)	Wall thick (in)	Gauge	EPA (ft ²) with 1.3 gust						Bolt circle (in)	Bolt size (in. x in. x in.)	Approximate ship weight (lbs.)
					80 MPH	Max. weight	90 MPH	Max. weight	100 MPH	Max. weight			
SSS QS 10 4C	10	4.0 x 10.0	0.1196	11	30.6	765	23.8	595	18.9	473	8–9	3/4 x 18 x 3	75
SSS QS 12 4C	12	4.0 x 12.0	0.1196	11	24.4	610	18.8	470	14.8	370	8–9	3/4 x 18 x 3	90
SSS QS 14 4C	14	4.0 x 14.0	0.1196	11	19.9	498	15.1	378	11.7	293	8–9	3/4 x 18 x 3	100
SSS QS 16 4C	16	4.0 x 16.0	0.1196	11	15.9	398	11.8	295	8.9	223	8–9	3/4 x 18 x 3	115
SSS QS 18 4C	18	4.0 x 18.0	0.1196	11	12.6	315	9.2	230	6.7	168	8–9	3/4 x 18 x 3	125
SSS QS 20 4C	20	4.0 x 20.0	0.1196	11	9.6	240	6.7	167	4.5	150	8–9	3/4 x 18 x 3	140
SSS QS 20 4G	20	4.0 x 20.0	0.1793	7	14	350	11	275	8	200	8–9	3/4 x 30 x 3	198
SSS QS 20 5C	20	5.0 x 20.0	0.1196	11	17.7	443	12.7	343	9.4	235	10–12	1 x 36 x 4	185
SSS QS 20 5G	20	5.0 x 20.0	0.1793	7	28.1	703	21.4	535	16.2	405	10–12	1 x 36 x 4	265
SSS QS 25 4C	25	4.0 x 25.0	0.1196	11	4.8	150	2.6	100	1	50	8–9	3/4 x 18 x 3	170
SSS QS 25 4G	25	4.0 x 25.0	0.1793	7	10.8	270	7.7	188	5.4	135	8–9	3/4 x 30 x 3	245
SSS QS 25 5C	25	5.0 x 25.0	0.1196	11	9.8	245	6.3	157	3.7	150	10–12	1 x 36 x 4	225
SSS QS 25 5G	25	5.0 x 25.0	0.1793	7	18.5	463	13.3	333	9.5	238	10–12	1 x 36 x 4	360

* EPA values are based on ASCE 7-93 wind map.

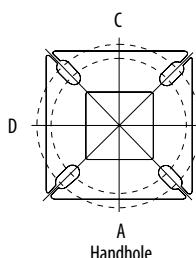
Plugs Nomenclature	Description
PL DT20	ESX Drillings
PL DT8	DSX/RSX Drillings

BASE DETAIL



POLE DATA						
Shaft base size	Bolt circle A	Bolt projection B	Base diameter C	Base plate thickness	Anchor bolt and template number	Anchor bolt description
4"C	8" – 9"	3.25"– 3.75"	8"– 8.25"	0.75"	ABSSS-4C	3/4"x18"x3"
4"G	8" – 9"	3.38"– 3.75"	8"– 8.25"	0.875"	ABSSS-4G	3/4"x30"x3"
5"	10" – 12"	3.5"– 4"	11"	1"	ABSSS-5	1"x36"x4"

HANDHOLE ORIENTATION



Default DM19AS is on side B.

IMPORTANT INSTALLATION NOTES:

- **Do not** erect poles without having fixtures installed.
- Factory-supplied templates must be used when setting anchor bolts. Lithonia Lighting will not accept claim for incorrect anchorage placement due to failure to use Lithonia Lighting factory templates.
- If poles are stored outside, all protective wrapping must be removed immediately upon delivery to prevent finish damage.
- Lithonia Lighting is not responsible for the foundation design.