

Local Benchmarks: BM-#

BM-1: Storm Structure, Manhole Cover  
Elevation: 983.62'  
N: 1013823.1758  
E: 2827361.8695

BM-2: Storm Structure, Manhole Cover  
Elevation: 1001.21'  
N: 1013384.7454  
E: 2827199.0101

**Grading Legend**

- existing minor contour
- - - existing major contour
- proposed minor contour
- proposed major contour

**Utility Legend**

- existing
- proposed

**Property Legend**

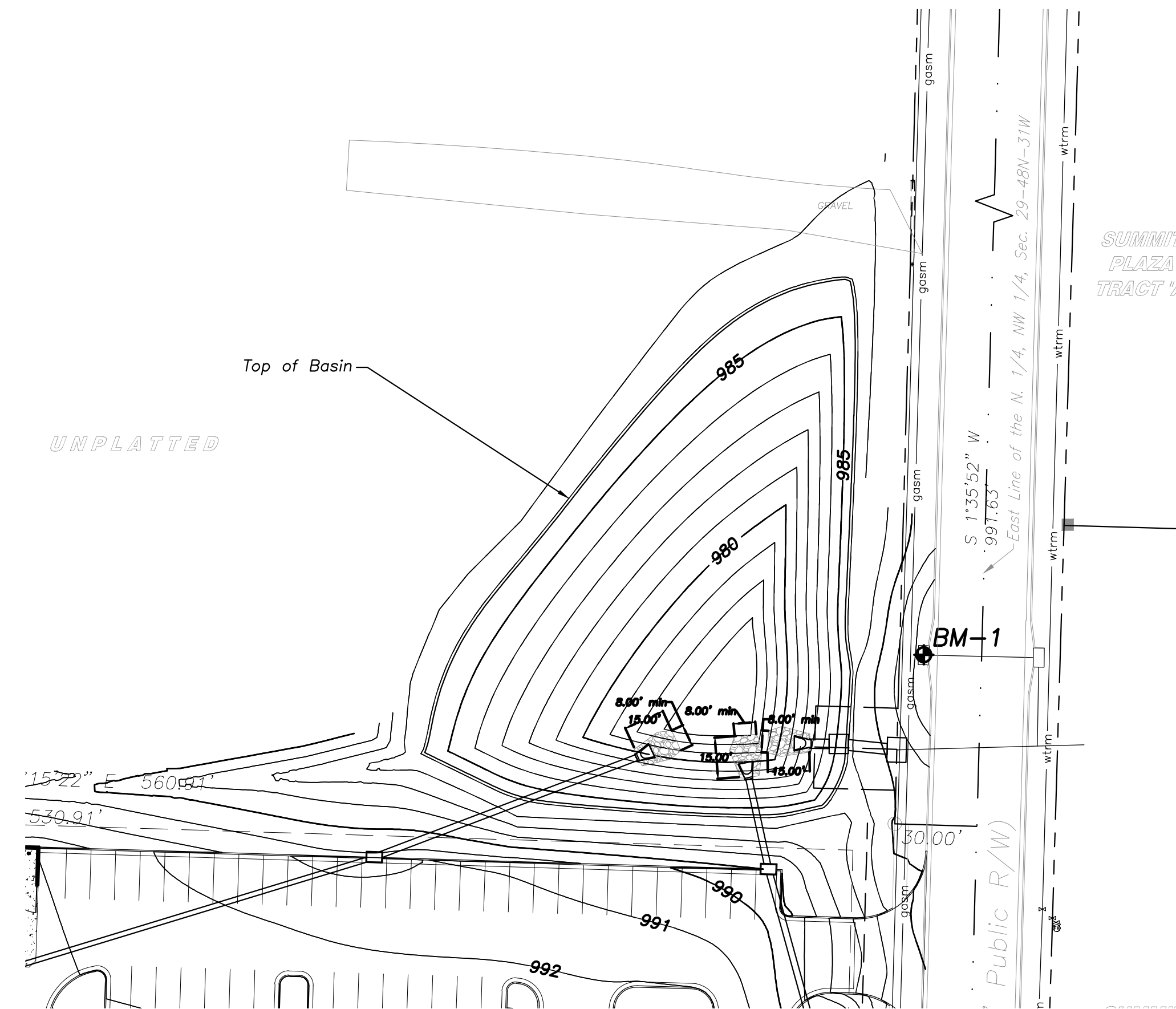
- right of way
- property lines
- easements
- setbacks

**Linetypes**

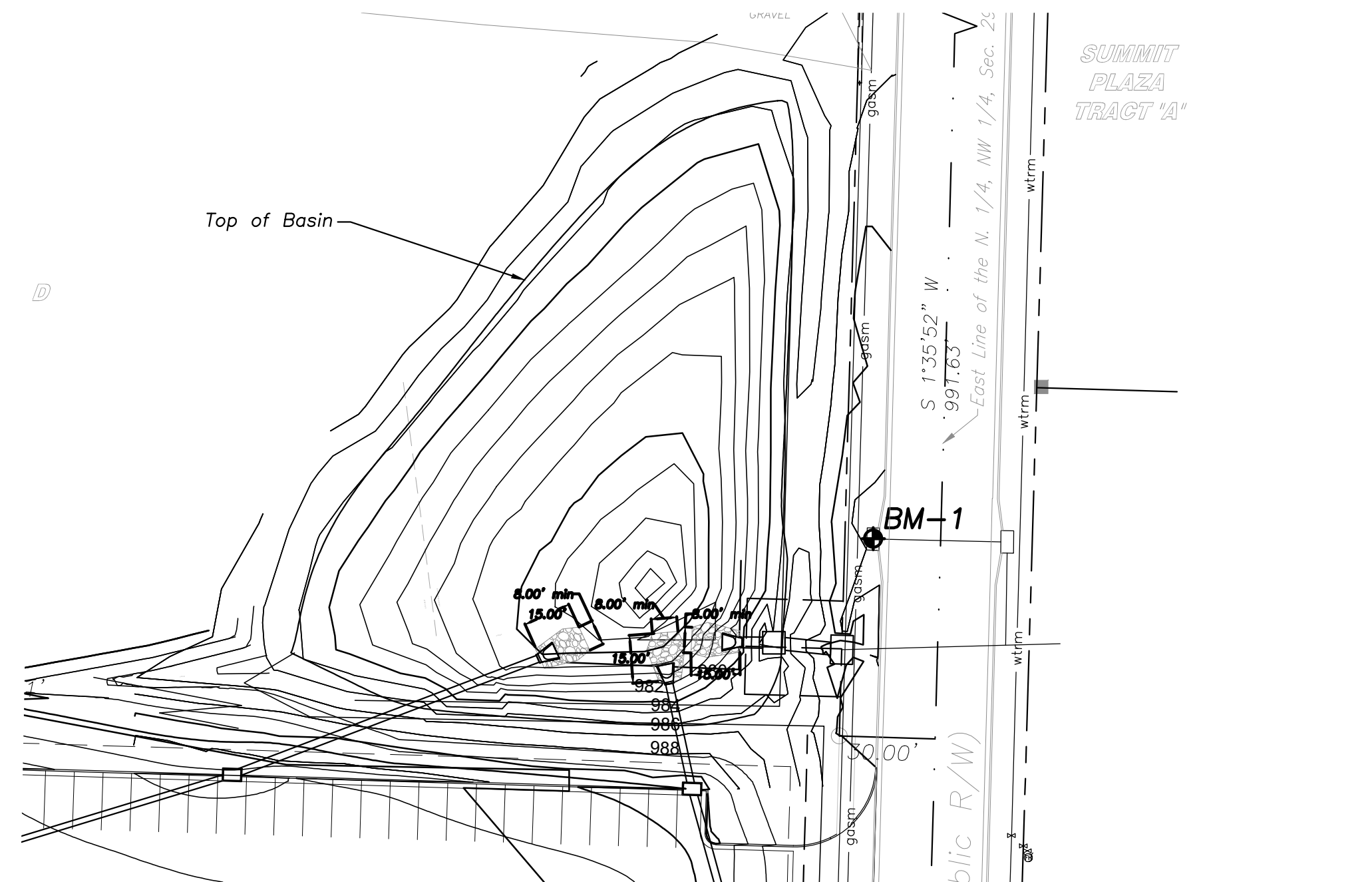
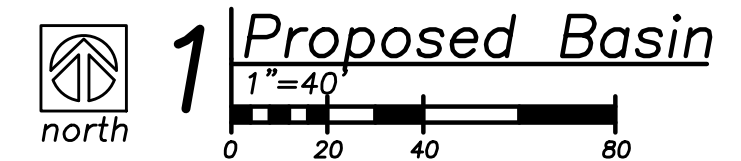
- sanm sanitary main
- sans sanitary service
- ssm storm sewer (existing)
- ssms storm sewer (solid wall, proposed)
- ssms storm sewer (solid wall, proposed)
- ssms storm sewer (perforated, proposed)
- wlrm water main
- wlrf water service (fire)
- wlrd water service (domestic)
- wlri water service (irrigation)
- gasm natural gas main
- gass natural gas service schematic
- elpu underground primary electric
- elsu underground secondary electric
- elpe overhead electric
- datu underground cable/phone/data
- datu underground cable/phone/data service
- fence-chainlink
- fence-wood
- fence-barbed wire
- treeline

**Symbols**

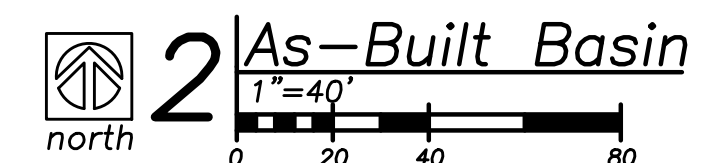
- ⊙ sanitary manhole
- ⊙ service cleanout
- ⊙ fmv force main release valve
- rectangular structure
- circular structure
- ⊕ fire hydrant
- ⊙ wv water valve
- ⊙ w water meter
- ⊙ BFP backflow preventer
- ⊙ natural gas meter
- ⊙ service transformer (pad mount)
- ⊙ primary switch gear
- ⊙ light pole
- ⊙ cable/phone/data junction box
- ⊙ street light
- ⊙ pedestrian street light
- ⊙ electric pole
- guy wire
- ⊔ end section



STAGE STORAGE TABLE						
ELEV	AREA (sq. ft.)	DEPT H (ft)	AVG END INC. VOL. (cu. ft.)	AVG END TOTAL VOL. (cu. ft.)	CONIC INC. VOL. (cu. ft.)	CONIC TOTAL VOL. (cu. ft.)
977.000	801.71	N/A	N/A	0.00	N/A	0.00
978.000	1,614.91	1.000	1208.31	1208.31	1184.82	1184.82
979.000	2,732.36	1.000	2173.63	3381.94	2149.29	3334.11
980.000	4,168.22	1.000	3450.29	6832.24	3425.12	6759.23
981.000	5,940.36	1.000	5054.29	11886.53	5028.20	11787.43
982.000	8,072.12	1.000	7006.24	18892.76	6979.05	18766.48
983.000	10,593.74	1.000	9332.93	28225.69	9304.41	28070.89
984.000	13,546.24	1.000	12069.99	40295.68	12039.78	40110.67
985.000	16,980.13	1.000	15263.18	55558.86	15230.89	55341.56
986.000	20,980.45	1.000	18980.29	74539.15	18945.06	74286.62



STAGE STORAGE TABLE						
ELEV	AREA (sq. ft.)	DEPT H (ft)	AVG END INC. VOL. (cu. ft.)	AVG END TOTAL VOL. (cu. ft.)	CONIC INC. VOL. (cu. ft.)	CONIC TOTAL VOL. (cu. ft.)
977.000	44.07	N/A	N/A	0.00	N/A	0.00
978.000	219.91	1.000	131.99	131.99	120.81	120.81
979.000	710.67	1.000	465.29	597.28	441.97	562.78
979.000	1,615.66	0.000	0.00	597.28	0.00	562.78
980.000	2,988.93	1.000	2302.30	2899.58	2267.37	2830.15
981.000	5,425.45	1.000	4207.19	7106.77	4147.11	6977.27
982.000	7,693.60	1.000	6559.53	13666.30	6526.60	13503.87
983.000	10,085.62	1.000	8889.61	22555.91	8862.67	22366.54
984.000	12,755.62	1.000	11420.62	33976.53	11394.52	33761.06
985.000	15,757.73	1.000	14256.68	48233.21	14230.26	47991.32
986.000	19,224.13	1.000	17490.93	65724.14	17462.24	65453.56



A New Facility for

# Automotive Sales & Detail Center

2100 NE Independence Ave  
Lee's Summit, Missouri 64064

date 12.20.2021  
drawn by OPH  
checked by PAM  
revisions

sheet number

# Ex. 1

drawing type

project number 19076