



September 16, 2022

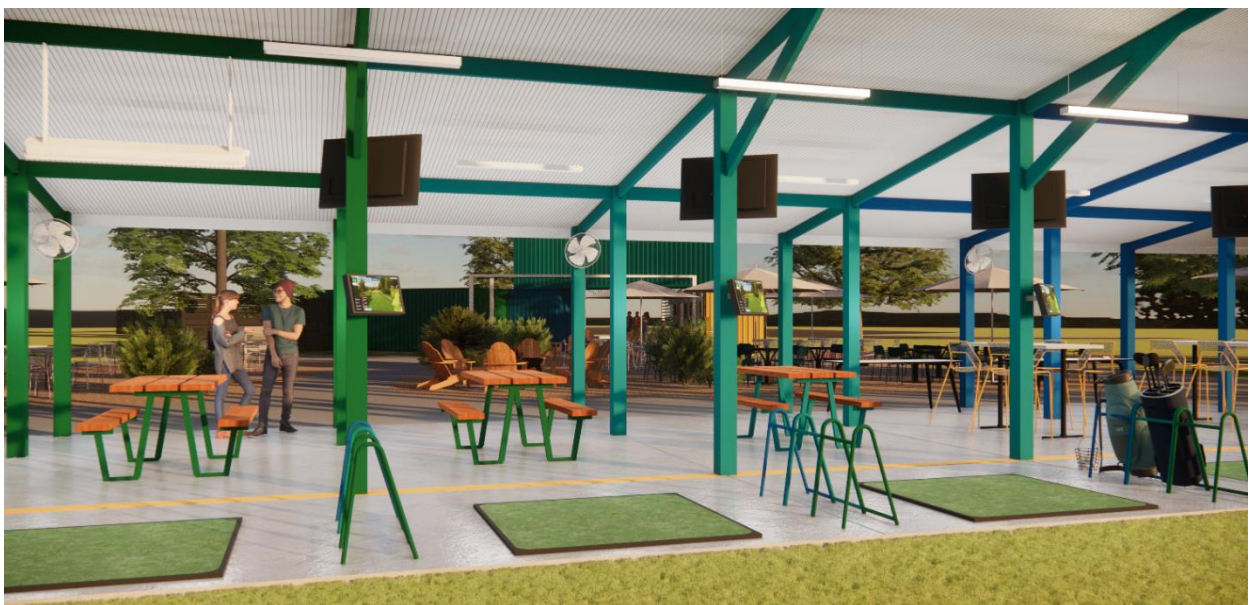
Blue Jeans Golf

(fka Family Golf Park)

Parcel Numbers: 34-720-01-08-00-0-00-000, 34-700-01-11-00-0-00-000, 34-720-01-02-02-0-00-000

1501 NE US 40 HWY

LEES SUMMIT, MO 64064





Displays the zoning designation for properties in Lee's Summit, MO

300ft

Description of Proposal

This application is a request for a Special Use Permit to allow golf learning and practice facility with miniature golf course within the properties zoned CP-2, AG and PI.

The site is a combination of three parcels totaling 29.5 acres located at 1501 NE US HWY 40. We are looking to re-develop the previously used Family Golf Park into a similar use with 40-hitting bays, dining facilities and future miniature golf use. The previously approved Special Use Permit for this land was granted in 1990 and expired in 2015.

Why the Modification is Necessary

Black Rock Coffee's prototype building has a patio, and we would like to offer this amenity to the patrons of this store as well.

The use will not cause an adverse impact on adjacent properties in the area.

The site will continue to be used in a similar manner to which it has been used since the previously granted Special Use Permit in 1990. Therefore, no adverse impact on adjacent properties is anticipated.