

10450 HOLMES ROAD, SUITE 600
KANSAS CITY, MO 64131
PH: 816-360-2700
FX: 816-360-2777

SHEET

01



02



HORZ. SCALE: 1"=30'
VERT. SCALE: 1"=10'

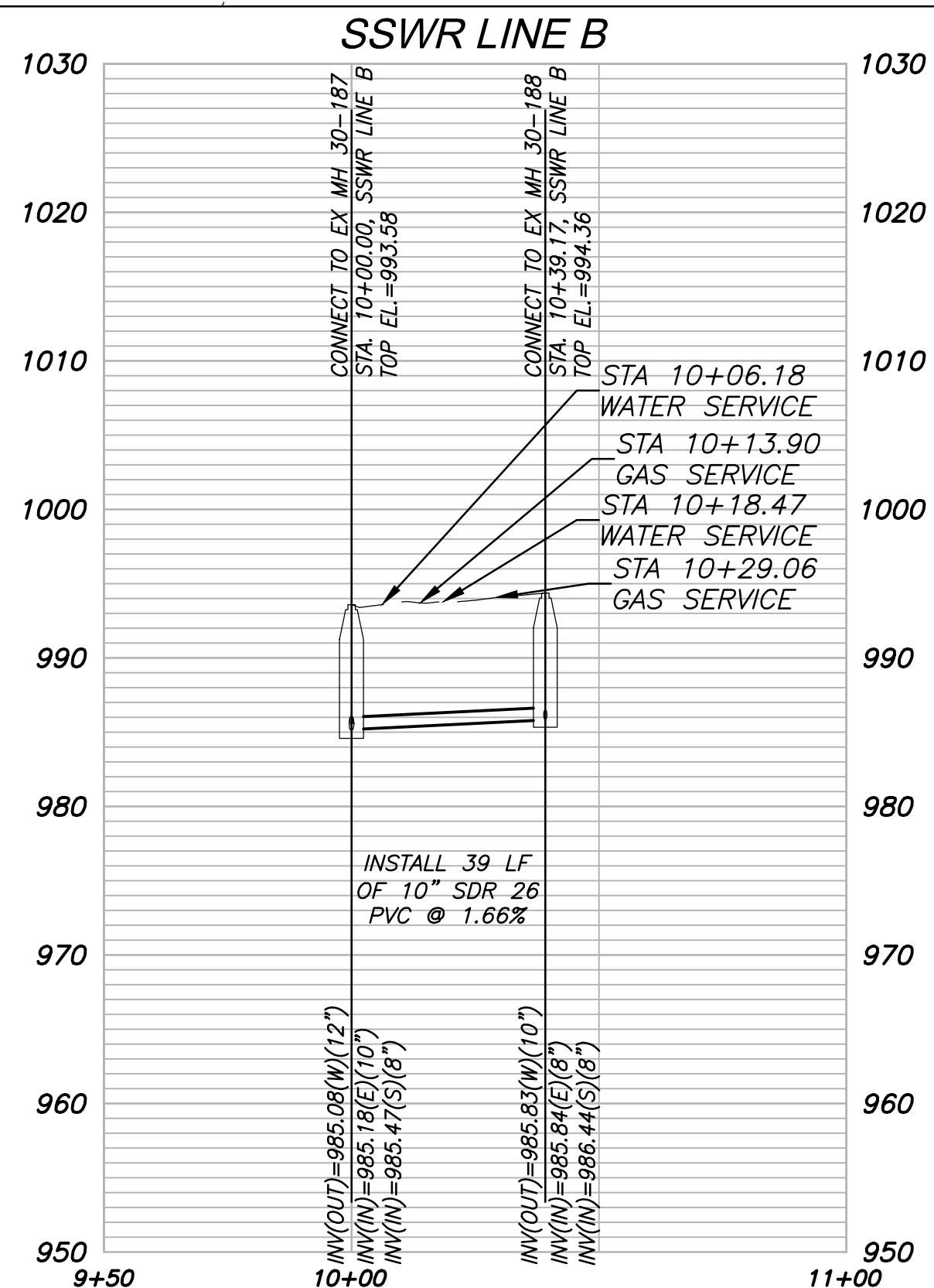
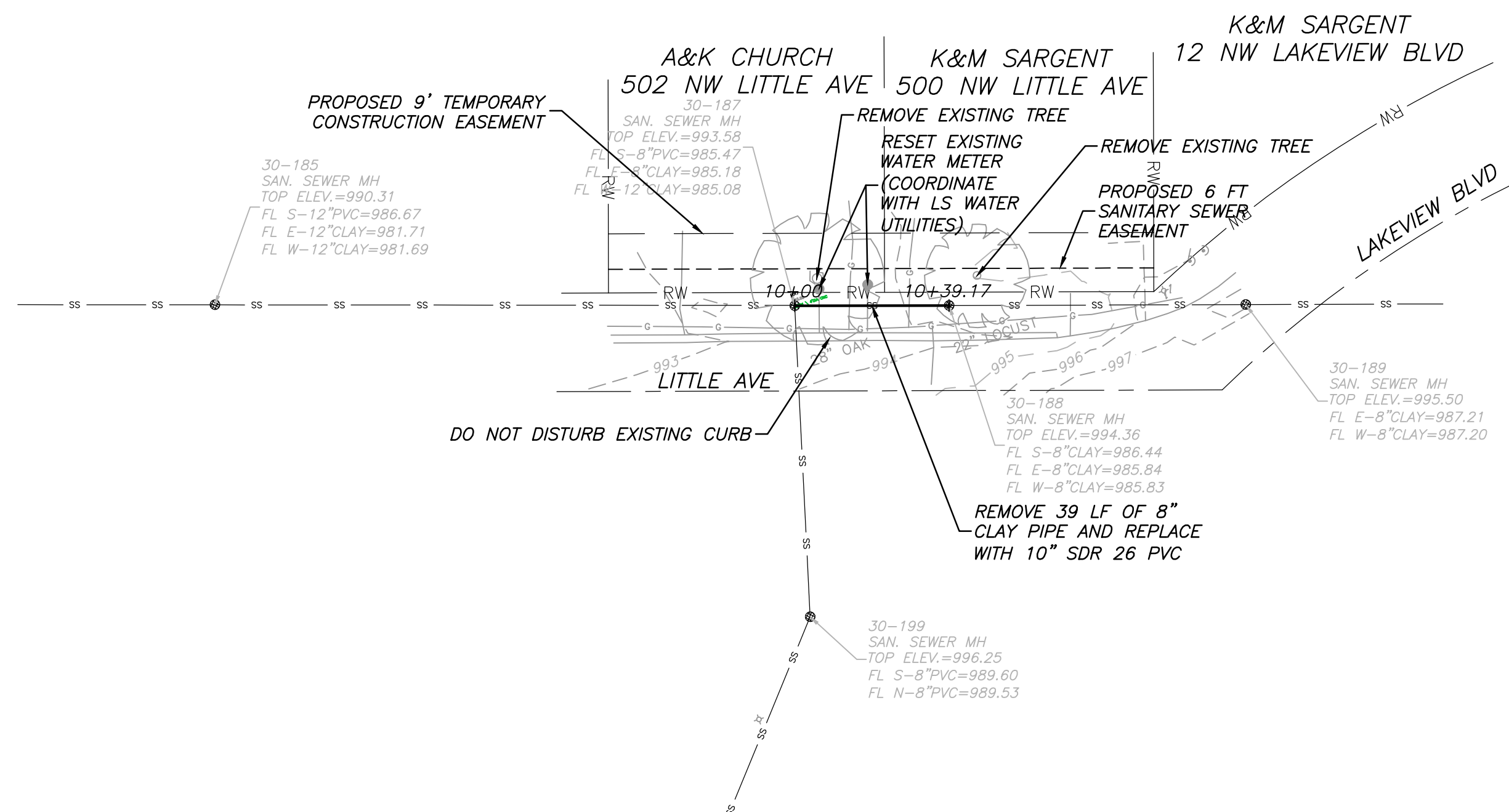
GENERAL NOTES:

1. THE CONSTRUCTION COVERED BY THESE PLANS SHALL CONFORM TO ALL APPLICABLE STANDARDS AND SPECIFICATIONS OF THE PUBLIC WORKS DEPARTMENT OF THE CITY OF LEE'S SUMMIT, THE KANSAS CITY METROPOLITAN CHAPTER OF THE AMERICAN PUBLIC WORKS ASSOCIATION (APWA), AND THE MISSOURI DEPARTMENT OF NATURAL RESOURCES (MDNR).
2. ALL WORKMANSHIP AND MATERIALS SHALL BE SUBJECT TO THE INSPECTION AND APPROVAL OF THE CITY OF LEE'S SUMMIT, MISSOURI.
3. THE UTILITY LOCATIONS SHOWN ON THESE DRAWINGS WERE DEVELOPED FROM INFORMATION AVAILABLE, IT IS THE CONTRACTORS RESPONSIBILITY TO VERIFY THE LOCATION OF ALL UTILITIES (WHETHER SHOWN OR NOT) AND PROTECT SAID UTILITIES FROM ANY DAMAGE.

THE CONTRACTOR MAY ALSO UTILIZE THE FOLLOWING TOLL FREE PHONE NUMBER PROVIDED BY "MISSOURI ONE CALL SYSTEM, INC.": 811. THIS PHONE NUMBER IS APPLICABLE ANYWHERE WITHIN THE STATE OF MISSOURI.

PRIOR TO COMMENCEMENT OF WORK, THE CONTRACTOR SHALL NOTIFY ALL THOSE COMPANIES WHICH HAVE FACILITIES IN THE NEAR VICINITY OF THE CONSTRUCTION TO BE PERFORMED.

5. IT SHALL BE THE RESPONSIBILITY OF THE CONTRACTOR TO PROTECT THE ADJACENT AND DOWNSTREAM PROPERTY OWNERS FROM STORM WATER, SILT AND EROSION DURING ALL PHASES OF CONSTRUCTION, AND SHALL KEEP THE STREETS CLEAN OF MUD AND DEBRIS.
6. LOCAL ACCESS TO ALL PROPERTIES SHALL BE MAINTAINED AT ALL TIMES.
7. CONTRACTOR SHALL BE RESPONSIBLE FOR SUPPORTING ANY WATER MAINS OR GAS MAINS HORIZONTALLY AND VERTICALLY WHEN CROSSING UNDER THE EXISTING MAIN(S). IF APPLICABLE THE CONTRACTOR WILL BE RESPONSIBLE FOR SUPPORTING ANY WATER MAIN OR GAS MAIN Laterally, WHILE WORKING ALONGSIDE ANY MAIN(S).
8. CONTRACTOR MUST COORDINATE THE BRACING OF ALL UTILITY POLES PRIOR TO ANY EXCAVATION WITHIN 10 FEET OF A POLE.
9. ALL UTILITY AND SANITARY SERVICE LINES SHALL BE KEPT IN SERVICE AND PROTECTED DURING CONSTRUCTION OPERATIONS. IT SHALL BE THE CONTRACTOR'S RESPONSIBILITY TO LOCATE ALL EXISTING SERVICE LINES, AND NOTIFY THE CITY'S REPRESENTATIVE OF ANY CONFLICTS IMMEDIATELY. THE CONTRACTOR SHALL BE HELD RESPONSIBLE FOR CONTACTING ALL UTILITY COMPANIES FOR FIELD LOCATION OF ALL UNDERGROUND UTILITY LINES PRIOR TO ANY EXCAVATION. UTILITIES DAMAGED THROUGH THE NEGLIGENCE OF THE CONTRACTOR SHALL BE REPAIRED AT THE CONTRACTOR'S EXPENSE.



HDR
MISSOURI CERTIFICATE OF
AUTHORITY #: 000856

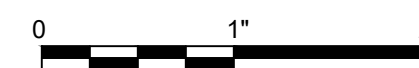
10450 HOLMES ROAD, SUITE 600
KANSAS CITY, MO 64131
816-360-2700

2	03-23-20	CITY RESUBMITTAL
1	12-31-19	CITY REVIEW
ISSUE	DATE	DESCRIPTION



**DOWNTOWN LEE'S SUMMIT APARTMENTS
PUBLIC SANITARY SEWER IMPROVEMENTS
114 S.E. DOUGLAS STREET
LEE'S SUMMIT, MISSOURI**

PUBLIC SEWER LINE B PLAN & PROFILE



FILENAME	01C-BP02-30.dwg
SCALE	AS NOTED

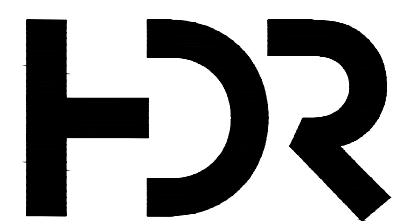
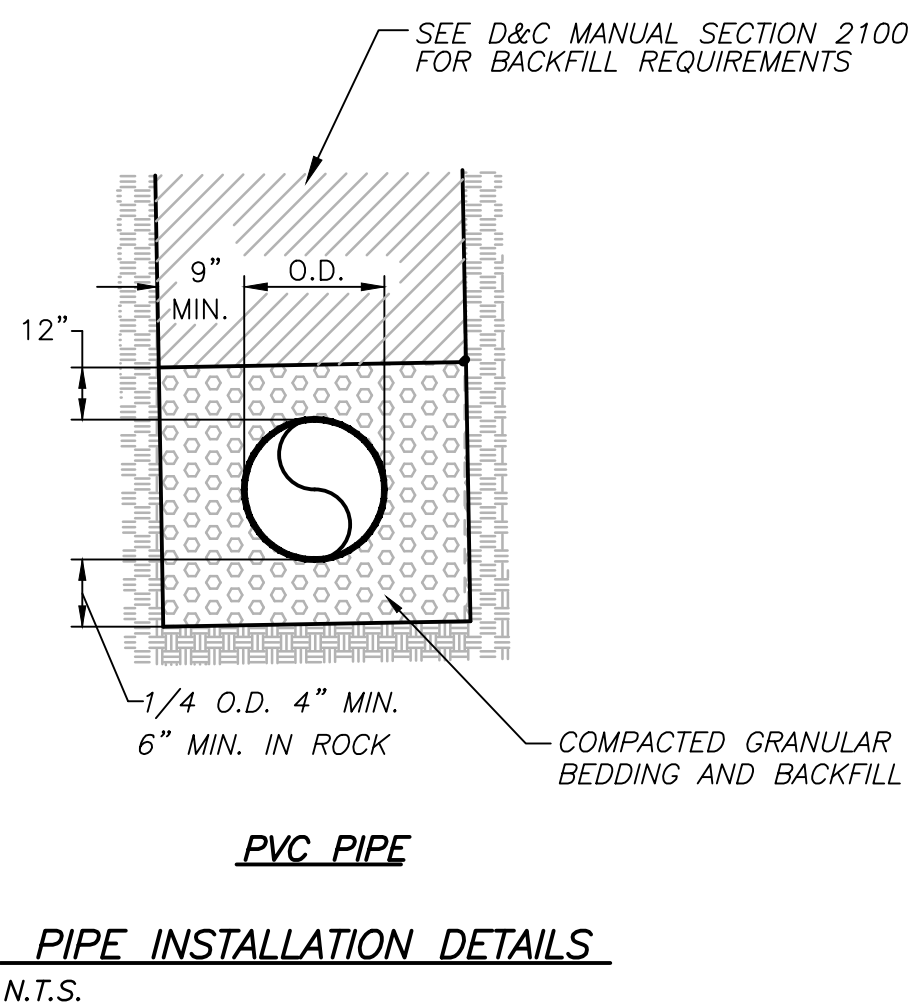
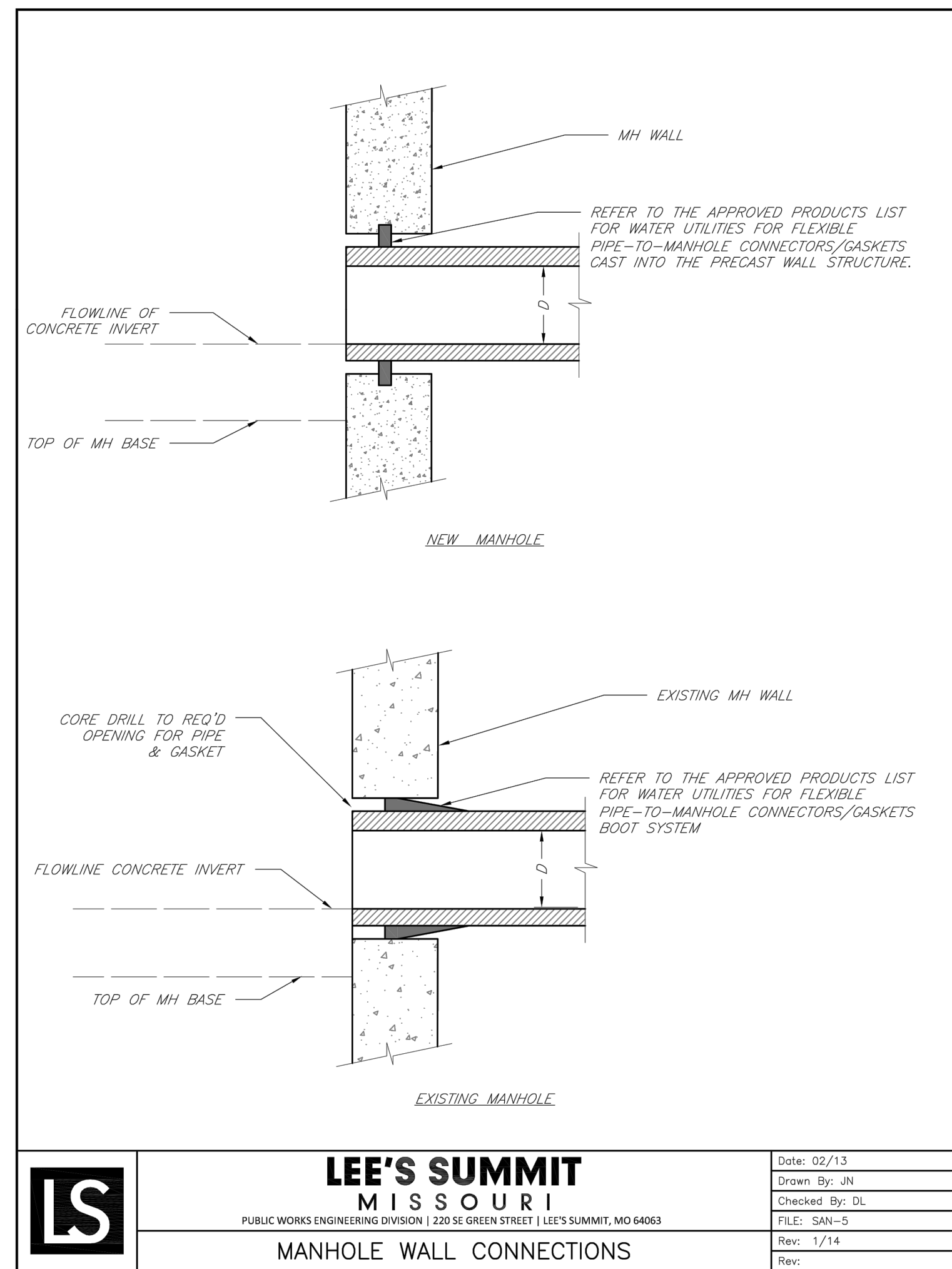
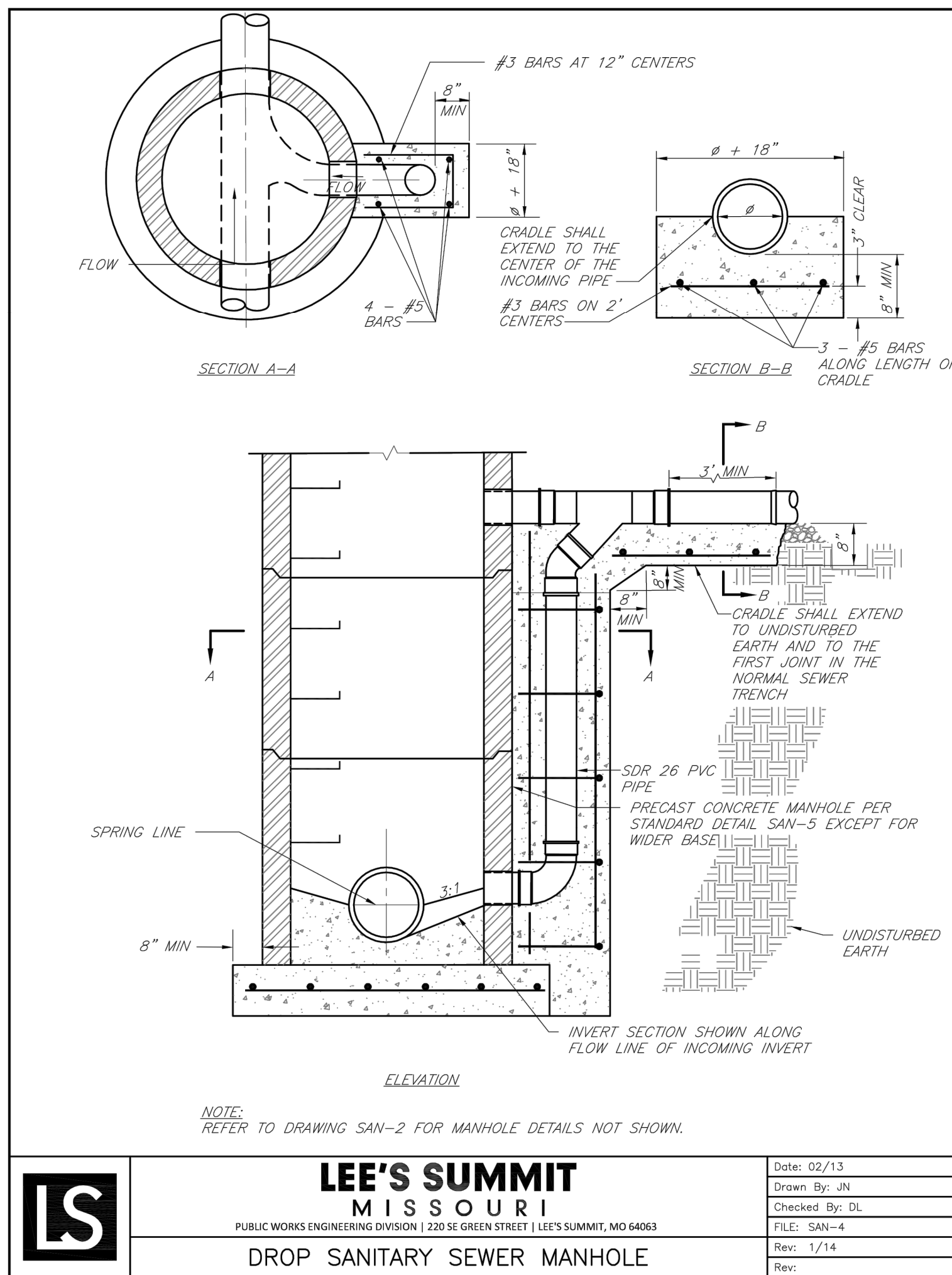
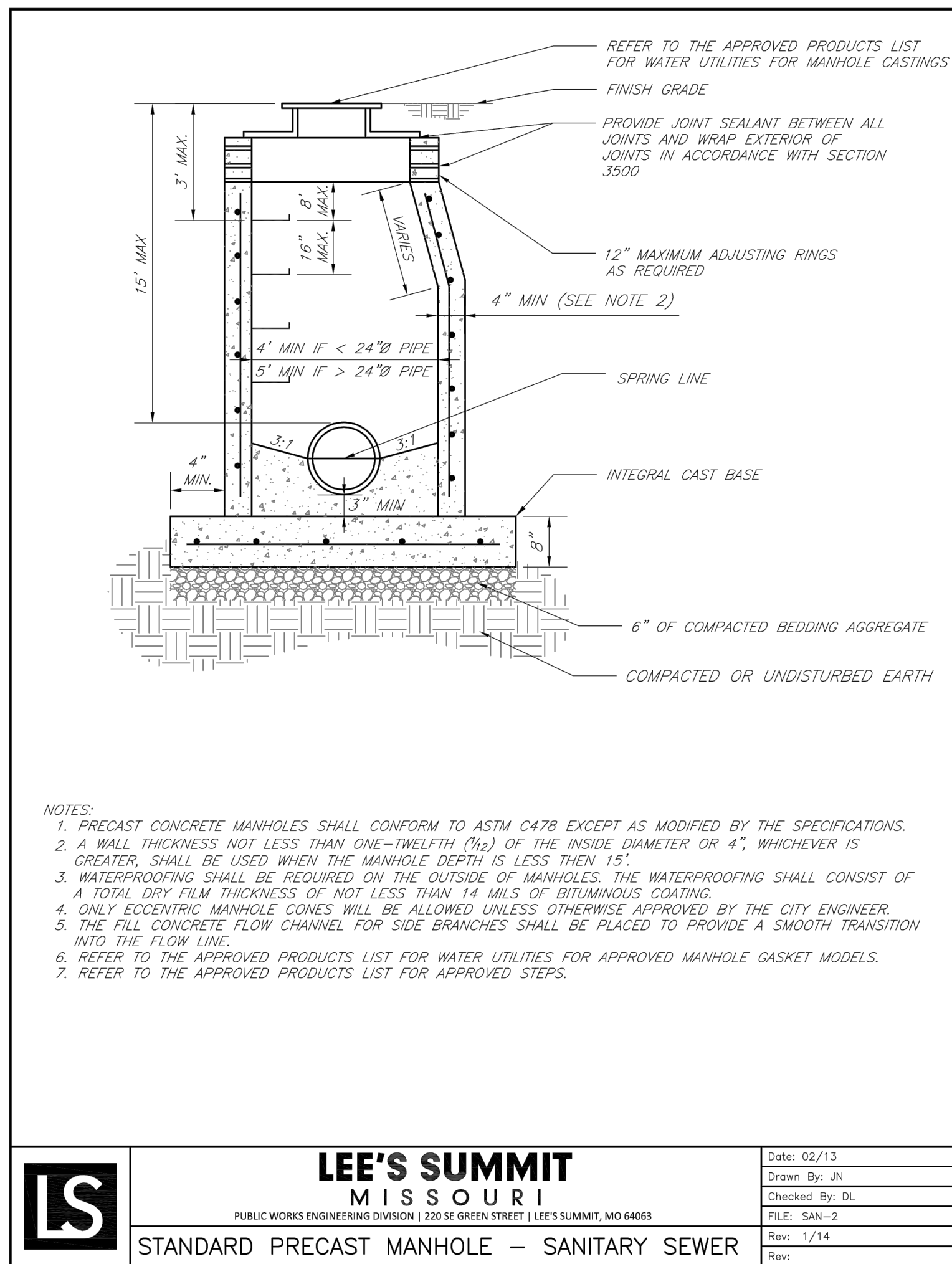
SHEET

☐

C

F

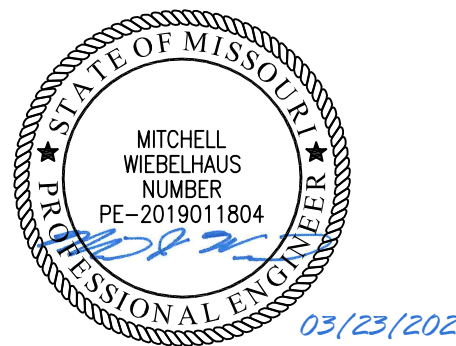
A



HDR
MISSOURI CERTIFICATE OF
AUTHORITY #: 000856
10450 HOLMES ROAD, SUITE 600
KANSAS CITY, MO 64131
816-360-2700

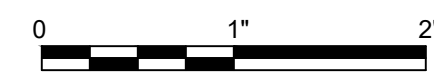
ISSUE	DATE	DESCRIPTION
2	03-23-20	CITY RESUBMITTAL
1	12-31-19	CITY REVIEW

PROJECT MANAGER	
CIVIL	M. WIEBELHAUS
PROJECT NUMBER	
10186909	



**DOWNTOWN LEE'S SUMMIT APARTMENTS
PUBLIC SANITARY SEWER IMPROVEMENTS
114 S.E. DOUGLAS STREET
LEE'S SUMMIT, MISSOURI**

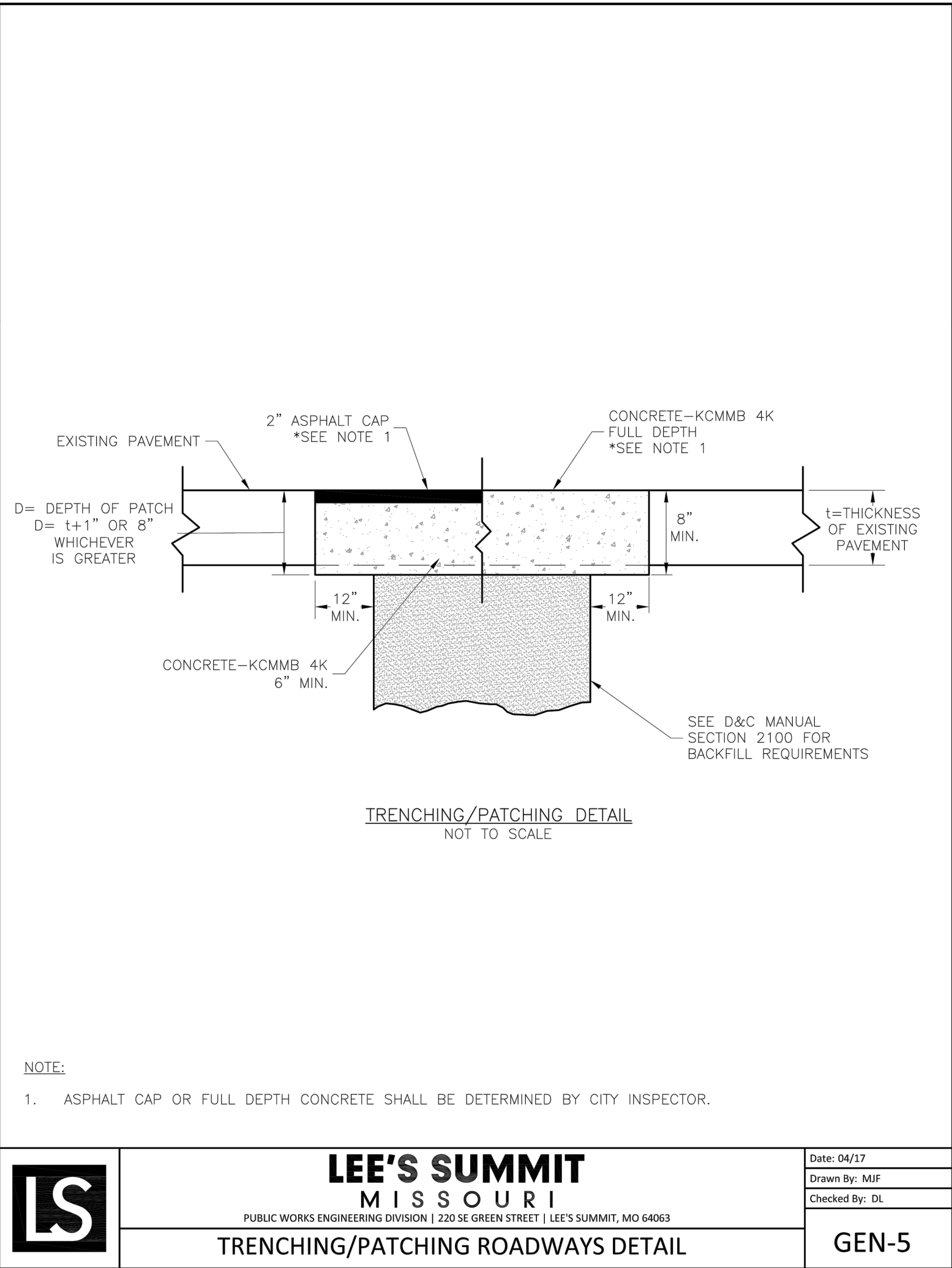
MISCELLANEOUS DETAILS

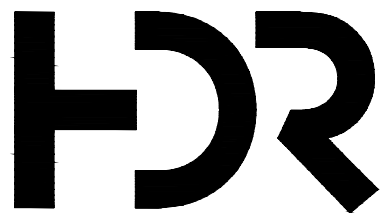


FILENAME | 01C-BP02-30.dwg
SCALE | AS NOTED

SHEET

04



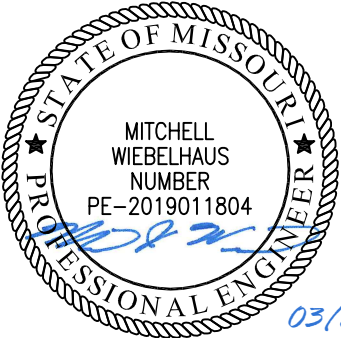


HDR
MISSOURI CERTIFICATE OF
AUTHORITY #: 000856

10450 HOLMES ROAD, SUITE 600
KANSAS CITY, MO 64131
816-360-2700

ISSUE	DATE	DESCRIPTION
2	03-23-20	CITY RESUBMITTAL
1	12-31-19	CITY REVIEW

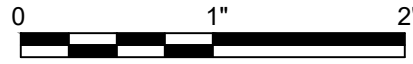
PROJECT MANAGER	
CIVIL	M. WIEBELHAUS
PROJECT NUMBER	10186909



03/23/202

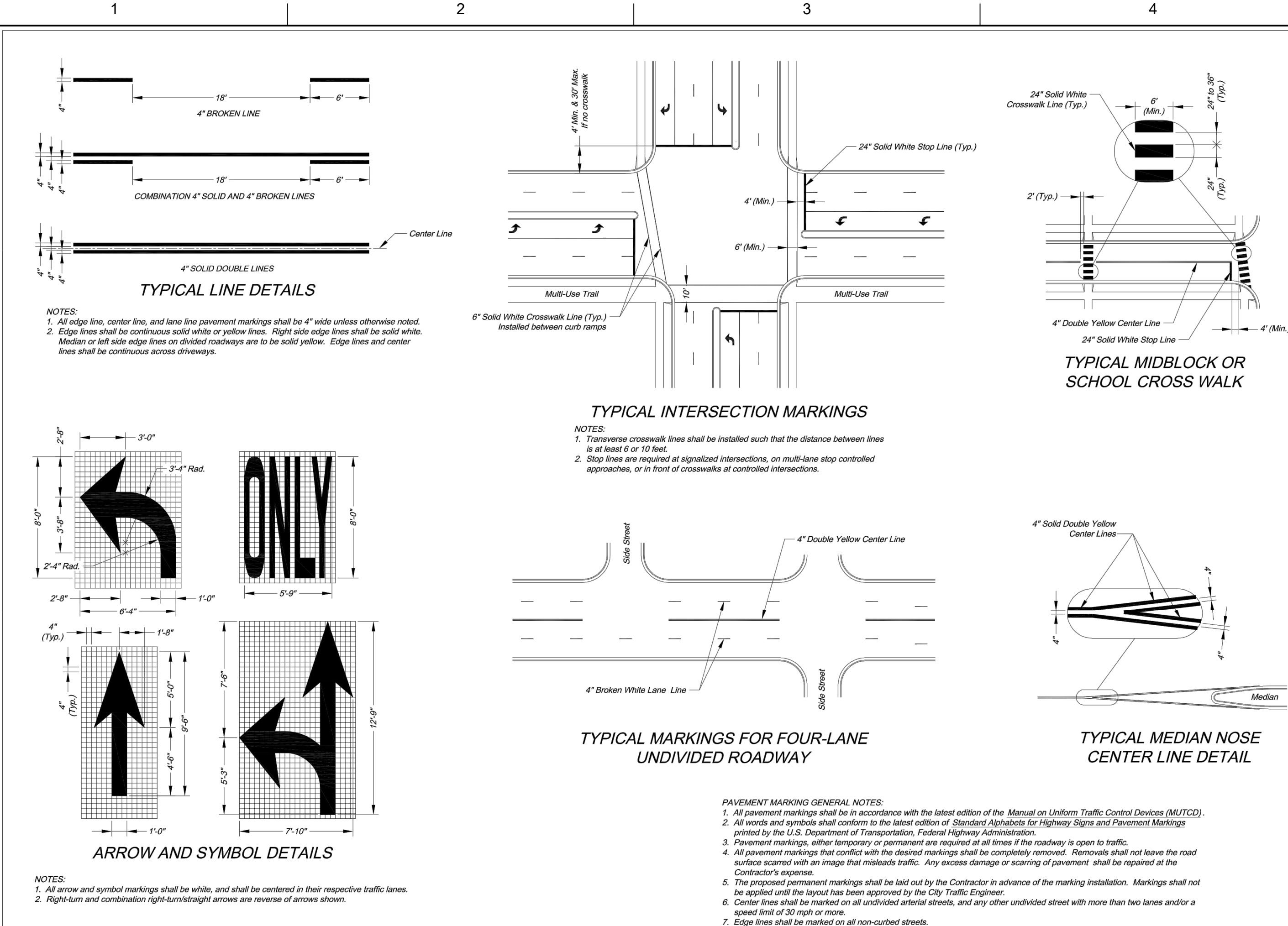
**DOWNTOWN LEE'S SUMMIT APARTMENTS
PUBLIC SANITARY SEWER IMPROVEMENTS
114 S.E. DOUGLAS STREET
LEE'S SUMMIT, MISSOURI**

MISCELLANEOUS DETAILS



FILENAME | 01C-BP02-30.dwg
SCALE | AS NOTED

SHEET
06



CITY OF LEE'S SUMMIT
PUBLIC WORKS DEPARTMENT
ENGINEERING DIVISION
220 SE GREEN STREET
LEE'S SUMMIT, MO 64043
PHONE: (816) 868-1800 FAX: (816) 869-1809



ROADWAY MARKING DETAILS
STANDARD DRAWING PW-1

Drawn By: AS
Checked By: JW
Date: 03/09/2009
Project#
1 OF 2
1

