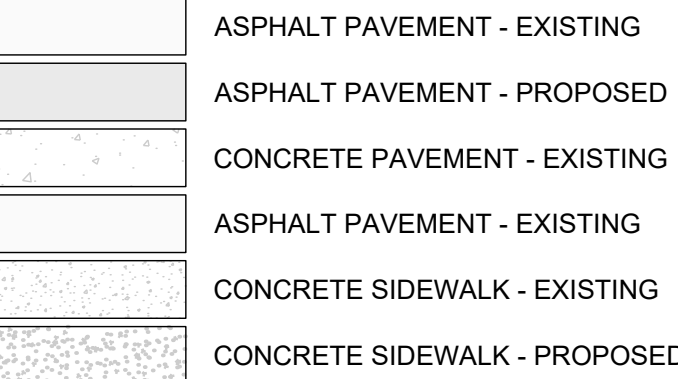


WATER MAIN PLANS
FOR
PERGOLA PARK 5TH PLAT
IN THE CITY OF LEE'S SUMMIT
JACKSON COUNTY, MISSOURI

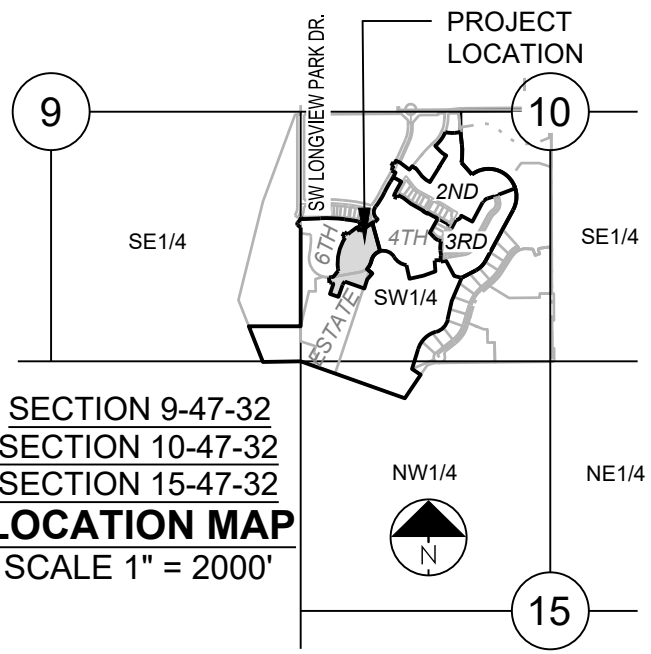
Sheet Number	Sheet Title
1	COVER SHEET
2	GENERAL LAYOUT
3	LINE 1 PLAN & PROFILE
4	LINES 2 & 3 PLAN & PROFILE
5	DETAIL SHEET

LEGEND:

- | | |
|------------|---------------------------------------|
| AE | - ACCESS EASEMENT |
| BC | - BACK OF CURB |
| B/B | - BACK TO BACK |
| BM | - BENCHMARK |
| BL or B.L. | - BUILDING LINE |
| CO | - CLEANOUT |
| TJB | - TELEPHONE JUNCTION BOX |
| C&G | - CURB AND GUTTER |
| D/E | - DRAINAGE EASEMENT |
| E/E | - ELECTRICAL EASEMENT |
| EL | - ELEVATION |
| FL | - FLOW LINE |
| G/E | - GAS LINE EASEMENT |
| HDPE | - HIGH-DENSITY POLYETHYLENE |
| L/E | - LANDSCAPE EASEMENT |
| MSFE | - MINIMUM SERVICEABLE FLOOR ELEVATION |
| PVC | - POLYVINYL CHLORIDE |
| P/L | - PROPERTY LINE |
| PUB/E | - PUBLIC EASEMENT |
| RCP | - REINFORCED CONCRETE PIPE |
| ROW or R/W | - RIGHT-OF-WAY |
| S/E | - SANITARY SEWER EASEMENT |
| SL | - SERVICE LINE |
| SW | - SIDEWALK |
| TE | - TOP ELEVATION |
| U/E | - UTILITY EASEMENT |
| WSE | - WATER SURFACE ELEVATION |
| W/E | - WATERLINE EASEMENT |



- CURB & GUTTER - EXISTING
- TREELINE
- EXISTING LOT AND R/W LINES
- EXISTING PLAT LINES
- P/L
- PROPERTY LINES
- ROW
- RIGHT-OF-WAY
- SANITARY SEWER MAIN
- SANITARY SEWER MAIN - EXIST.
- STO
- STORM SEWER
- STORM SEWER - EXISTING
- CATV_x
- CABLE TV - EXISTING
- FOC_x
- FIBER OPTIC CABLE - EXISTING
- T_x
- TELEPHONE LINE - EXIST.
- E_x
- ELECTRIC LINE - EXISTING
- OCF_x
- OVERHEAD POWER LINE - EXIST.
- UGF_x
- UNDERGROUND ELECTRIC - EX.
- G_x
- GAS LINE - EXISTING
- W_x
- WATERLINE - EXISTING
- LIGHT - EXISTING
- EXISTING MANHOLE
- CE
- CLEANOUT
- EXISTING SANITARY MANHOLE
- PROPOSED SANITARY MANHOLE
- GA
- EXISTING AREA INLET
- GI
- EXISTING CURB INLET
- GR
- EXISTING GRADE INLET
- J
- EXISTING JUNCTION BOX
- ISTO
- EXISTING STORM MANHOLE

**UTILITY CONTACTS:**MISSOURI DEPARTMENT OF
TRANSPORTATION (MODOT)

Steve Holloway
600 NE Colbern Road
Lee's Summit, MO 64086
(816) 607-2186

MISSOURI GAS ENERGY (MGE)

Brent Jones
3025 SE Clover Drive
Lee's Summit, MO 64082
(816) 399-9633
brent.jones@spireenergy.com

EVERGY

Ron DeJarnette
1300 SE Hamblin Road
Lee's Summit, MO 64081
Office: (816) 347-4316
Cell: (816) 810-5234
ron.dejarnette@evergy.com

CITY OF LEES SUMMIT PUBLIC WORKS

220 SE Green Street
Lee's Summit, MO 64063
(816) 969-1800

AT&T

Mark Manion or Marty Loper
500 E. 8th Street, Room 370
Kansas City, MO 64106
(816) 275-2341 or (816) 275-1550

COMCAST CABLE

John Meadows
4700 Little Blue Parkway
Independence, MO 64057
(816) 795-2257

CITY OF LEE'S SUMMIT WATER UTILITIES

Mark Schaufler
1200 SE Hamblen Road
Lee's Summit, MO 64081
(816) 969-1900

SUMMARY OF QUANTITIES

	ITEM	QUANTITY	UNITS
1	CONNECT TO EXISTING WATER LINE	2	EA
2	FIRE HYDRANT ASSEMBLY	3	EA
3	END OF LINE TEMPORARY FIRE HYDRANT ASSEMBLY	2	EA
4	REMOVE TEMPORARY FIRE HYDRANT ASSEMBLY	2	EA
5	8" C-900 PVC	1,357	LF
6	8" GATE VALVE	6	EA
7	8" X 8" TEE	2	EA
8	8" 11.25" PVC BEND	7	EA
9	8" 22.5" PVC BEND	3	EA
10	8" 45" PVC BEND	2	EA
11	8" 45" VERTICAL PVC BEND	8	EA
12	8" 90" PVC BEND	2	EA

MISSOURI GEOGRAPHIC REFERENCE SYSTEM
BENCH MARK:

BM JA-148, IS A STAMPED KC METRO DISK SET IN CONCRETE LOCATED 2 MILES WEST OF THE INTERSECTION OF HIGHWAY 50 AND 3RD ST. IT IS 44 FT NORTH OF THE CENTER OF 3RD ST. AND 102.5 FT WEST OF THE CENTER OF THE EXIT FROM THE ADJACENT PARKING LOT.

ELEV. 935.18

PROJECT BENCHMARK:

CHISELED "SQUARE" ON STORM CURB INLET AT NORTHWEST
INTERSECTION OF SW. TOWER PARK DRIVE AND SW. LONGVIEW
BOULEVARD.

NORTHING: 998893.4148
EASTING: 2803318.5413
ELEV. 1004.09

PREPARED BY:



SCHLAGEL & ASSOCIATES, P.A.

PERGOLA PARK 5TH PLAT

WATER MAIN PLANS

- LEE'S SUMMIT, MISSOURI

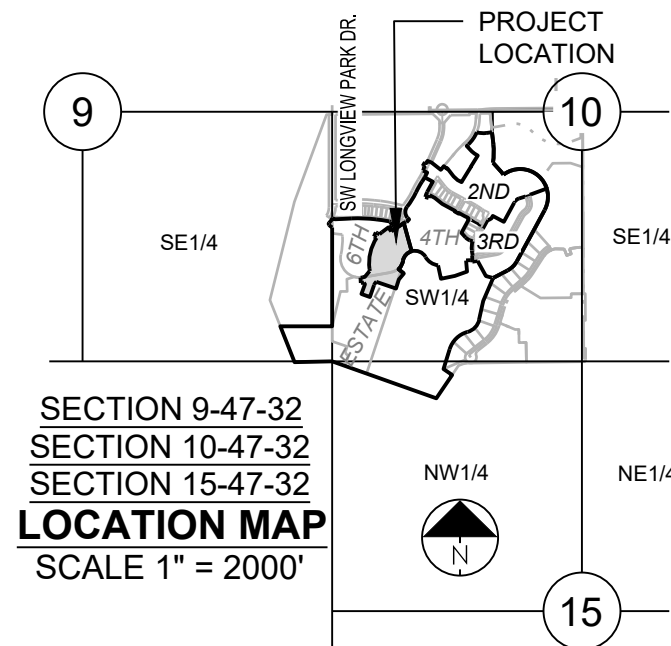
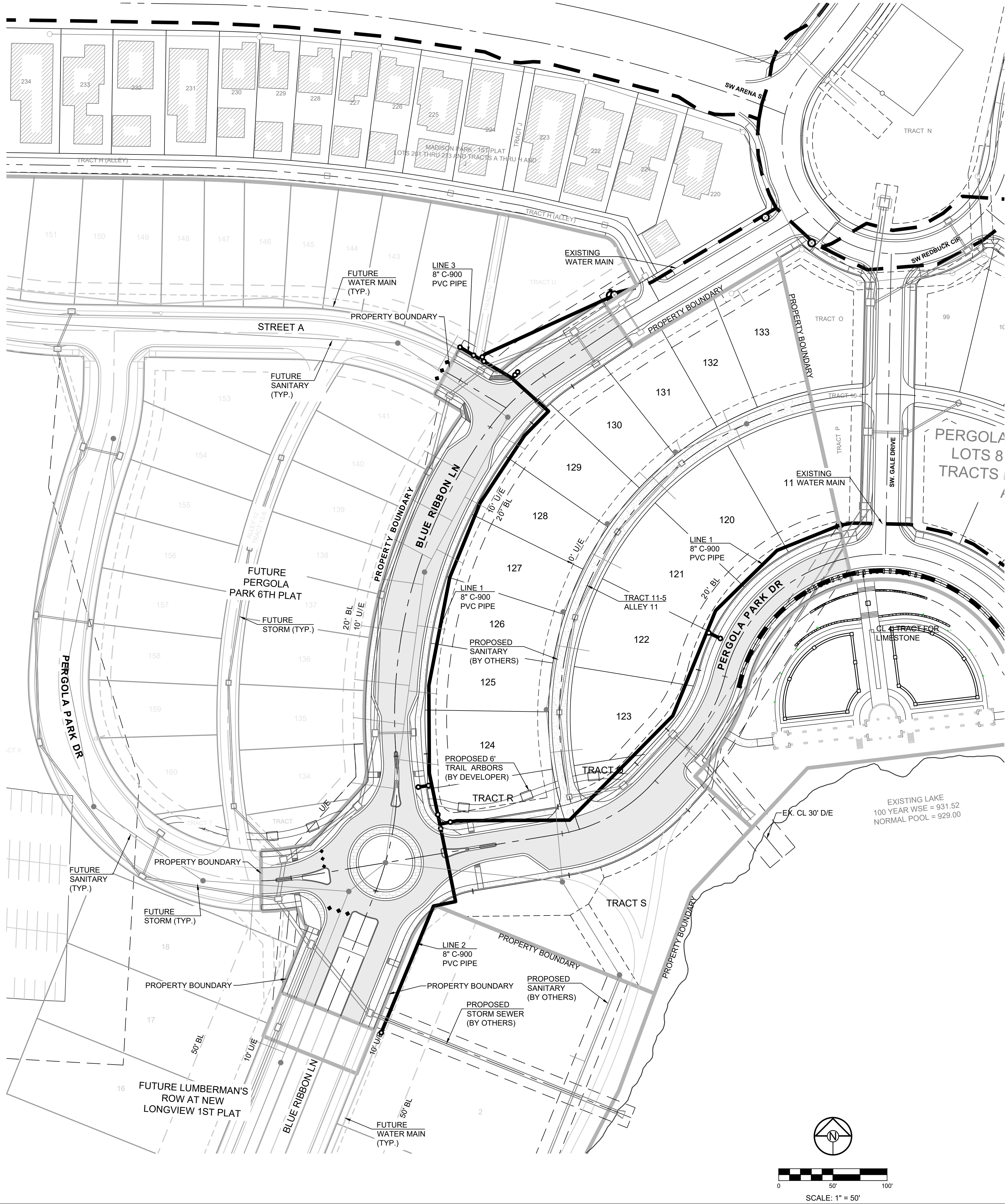
REVISION DATE	DESCRIPTION
1. 2-4-22	CITY COMMENTS
2. 3-23-22	CITY COMMENTS
3. 6-21-22	CITY COMMENTS
4. 8-16-22	CITY COMMENTS
5.	
6.	
7.	
8.	

COVER SHEET

SHEET

1

- GENERAL NOTES:
1. ALL CONSTRUCTION TO FOLLOW THE CITY OF LEE'S SUMMIT DESIGN AND CONSTRUCTION MANUAL AS ADOPTED BY ORDINANCE 5813.
 2. THE CONTRACTOR IS RESPONSIBLE FOR VERIFYING ALL EXISTING UTILITY LOCATIONS PRIOR TO EXCAVATIONS.
 3. FOR ALL WATER LINES THE MAXIMUM DEPTH OF COVER IS SEVEN (7) FEET.



MISSOURI GEOGRAPHIC REFERENCE SYSTEM BENCH MARK:

BM JA-148, IS A STAMPED KC METRO DISK SET IN CONCRETE LOCATED 2 MILES WEST OF THE INTERSECTION OF HIGHWAY 50 AND 3RD ST. IT IS 44 FT NORTH OF THE CENTER OF 3RD ST. AND 102.5 FT WEST OF THE CENTER OF THE EXIT FROM THE ADJACENT PARKING LOT.

ELEV. 935.18

PROJECT BENCHMARK:

CHISELED "SQUARE" ON STORM CURB INLET AT NORTHWEST INTERSECTION OF SW. TOWER PARK DRIVE AND SW. LONGVIEW BOULEVARD.

NORTHING: 998893.4148
EASTING: 2803318.5413
ELEV. 1004.09

REVISION DATE	DESCRIPTION	CITY COMMENTS
2-4-22	1	CITY COMMENTS
3-23-22	2	CITY COMMENTS
6-21-22	3	CITY COMMENTS
8-16-22	4	CITY COMMENTS
	5	
	6	
	7	
	8	
	9	
	10	
	11	
	12	
	13	
	14	
	15	
	16	
	17	
	18	
	19	
	20	
	21	
	22	
	23	
	24	
	25	
	26	
	27	
	28	
	29	
	30	
	31	
	32	
	33	
	34	
	35	
	36	
	37	
	38	
	39	
	40	
	41	
	42	
	43	
	44	
	45	
	46	
	47	
	48	
	49	
	50	
	51	
	52	
	53	
	54	
	55	
	56	
	57	
	58	
	59	
	60	
	61	
	62	
	63	
	64	
	65	
	66	
	67	
	68	
	69	
	70	
	71	
	72	
	73	
	74	
	75	
	76	
	77	
	78	
	79	
	80	
	81	
	82	
	83	
	84	
	85	
	86	
	87	
	88	
	89	
	90	
	91	
	92	
	93	
	94	
	95	
	96	
	97	
	98	
	99	
	100	
	101	
	102	
	103	
	104	
	105	
	106	
	107	
	108	
	109	
	110	
	111	
	112	
	113	
	114	
	115	
	116	
	117	
	118	
	119	
	120	
	121	
	122	
	123	
	124	
	125	
	126	
	127	
	128	
	129	
	130	
	131	
	132	
	133	
	134	
	135	
	136	
	137	
	138	
	139	
	140	
	141	
	142	
	143	
	144	
	145	
	146	
	147	
	148	
	149	
	150	
	151	
	152	
	153	
	154	
	155	
	156	
	157	
	158	
	159	
	160	
	161	
	162	
	163	
	164	
	165	
	166	
	167	
	168	
	169	
	170	
	171	
	172	
	173	
	174	
	175	
	176	
	177	
	178	
	179	
	180	
	181	
	182	
	183	
	184	
	185	
	186	
	187	
	188	
	189	
	190	
	191	
	192	
	193	
	194	
	195	
	196	
	197	
	198	
	199	
	200	
	201	
	202	
	203	
	204	
	205	
	206	
	207	
	208	
	209	
	210	
	211	
	212	
	213	
	214	
	215	
	216	
	217	
	218	
	219	
	220	
	221	
	222	
	223	
	224	
	225	
	226	
	227	
	228	
	229	
	230	
	231	
	232	
	233	
	234	
	235	
	236	
	237	
	238	
	239	
	240	
	241	
	242	
	243	
	244	
	245	
	246	
	247	
	248	
	249	
	250	
	251	
	252	
	253	
	254	
	255	
	256	
	257	
	258	
	259	
	260	
	261	
	262	
	263	
	264	
	265	
	266	
	267	
	268	
	269	
	270	
	271	
	272	
	273	
	274	
	275	
	276	
	277	
	278	
	279	
	280	
	281	
	282	
	283	
	284	
	285	
	286	
	287	
	288	
	289	
	290	
	291	
	292	
	293	
	294	
	295	
	296	
	297	
	298	
	299	
	300	
	301	
	302	
	303	
	304	
	305	
	306	
	307	
	308	
	309	
	310	
	311	
	312	
	313	
	314	
	315	
	316	
	317	
	318	
	319	
	320	
	321	
	322	
	323	
	324	
	325	
	326	
	327	
	328	
	329	
	330	
	331	
	332	
	333	
	334	
	335	
	336	
	337	
	338	
	339	
	340	
	341	
	342	
	343	
	344	
	345	
	346	
	347	
	348	
	349	
	350	
	351	
	352	
	353	
	354	
	355	
	356	
	357	
	358	
	359	
	360	
	361	
	362	
	363	
	364	
	365	
	366	
	367	
	368	
	369	
	370	
	371	
	372	
	373	
	374	
	375	
	376	
	377	
	378	
	379	
	380	
	381	
	382	
	383	
	384	
	385	
	386	
	387	
	388	
	389	
	390	
	391	
	392	
	393	
	394	
	395	
	396	
	397	
	398	
	399	
	400	
	401	
	402	
	403	
	404	
	405	
	406	
	407	
	408	
	409	
	410	
	411	
	412	
	413	
	414	
	415	
	416	
	417	
	418	
	419	
	420	
	421	
	422	
	423	
	424	
	425	
	426	
	427	
	428	
	429	
	430	
	431	
	432	
	433	
	434	
	435	
	436	
	437	
	438	
	439	
	440	
	441	
	442	
	443	
	444	
	445	
	446	
	447	
	448	
	449	
	450	
	451	
	452	
	453	
	454	
	455	
	456	
	457	
	458	
	459	
	460	
	461	
	462	
	463	
	464	
	465	
	466	
	467	
	468	
	469	
	470	
	471	
	472	
	473	
	474	
	475	
	476	
	477	
	478	
	479	
	480	
	481	
	482	
	483	
	484	
	485	
	486	
	487	
	488	
	489	
	490	
	491	
	492	
	493	
	494	
	495	
	496	
	497	
	498	
	499	
	500	
	501	
	502	
	503	
	504	
	505	
	506	
	507	
	508	
	509	
	510	
	511	
	512	
	513	
	514	
	515	
	516	
	517	
	518	
	519	
	520	
	521	
	522	
	523	
	524	
	525	
	526	
	527	
	528	
	529	
	530	
	531	
	532	
	533	
	534	
	535	
	536	
	537	
	538	
	539	
	540	
	541	
	542	
	543	
	544	
	545	
	546	
	547	
	548	
	549	
	550	
	551	
	552	
	553	
	554	
	555	
	556	
	557	
	558	
	559	
	560	
	561	

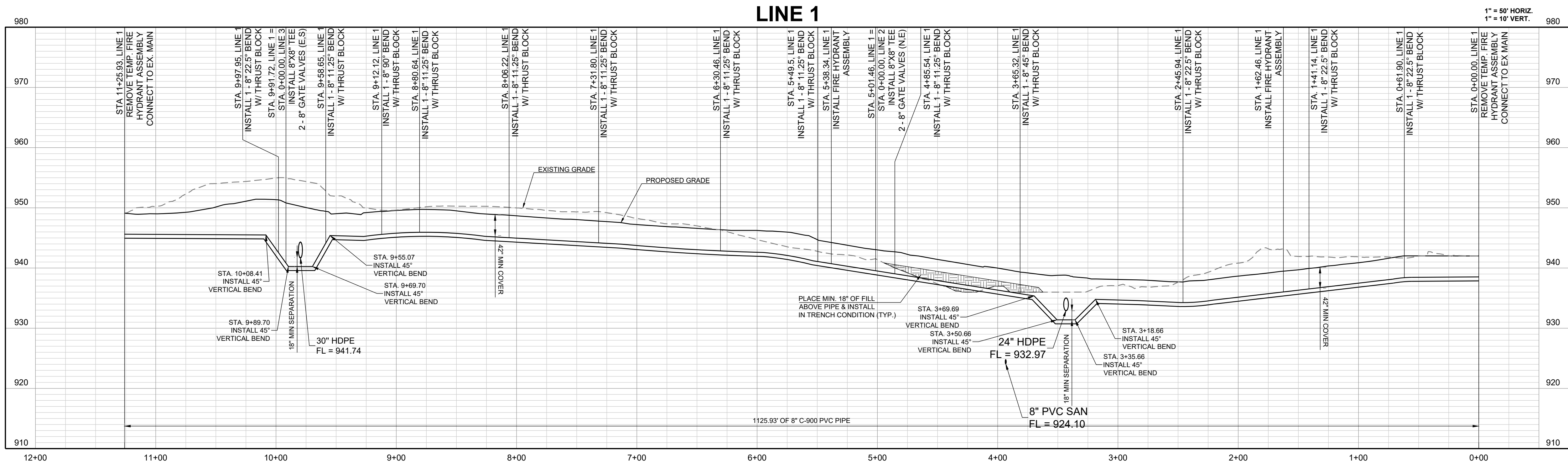
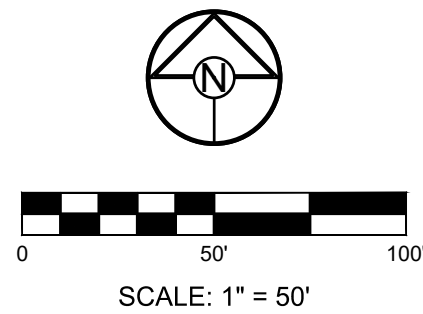
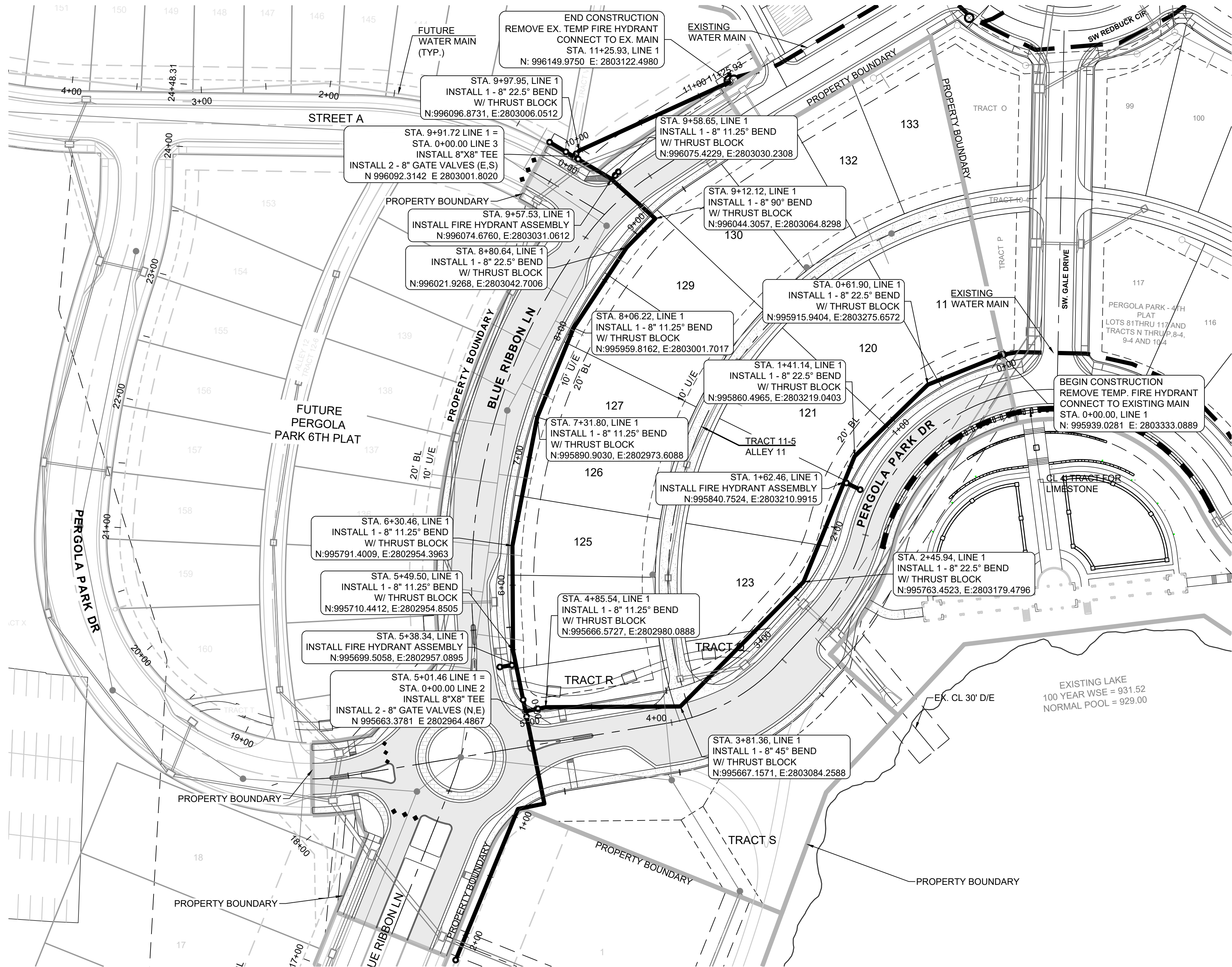
GENERAL NOTES:

1. ALL CONSTRUCTION TO FOLLOW THE CITY OF LEE'S SUMMIT DESIGN AND CONSTRUCTION MANUAL AS ADOPTED BY ORDINANCE 5813.
2. THE CONTRACTOR IS RESPONSIBLE FOR VERIFYING ALL EXISTING UTILITY LOCATIONS PRIOR TO EXCAVATIONS.
3. FOR ALL WATER LINES THE MAXIMUM DEPTH OF COVER IS SEVEN (7) FEET.

PROJECT BENCHMARK:

CHISELED "SQUARE" ON STORM CURB INLET AT NORTHWEST INTERSECTION OF SW. TOWER PARK DRIVE AND SW. LONGVIEW BOULEVARD.

NORTHING: 998893.4148
EASTING: 2803318.5413
ELEV. 1004.09



PREPARED BY:



SCHLAGEL & ASSOCIATES, P.A.

PERGOLA PARK 5TH PLAT
WATER MAIN PLANS

- LEE'S SUMMIT, MISSOURI

REVISION DATE	DESCRIPTION
2-4-22	CITY COMMENTS
3-23-22	CITY COMMENTS
6-21-22	CITY COMMENTS
8-16-22	CITY COMMENTS
11-17-2021	DATE PREPARED
20-189	PROJ. NUMBER

DRAWN BY: BAL	CITY COMMENTS
CHECKED BY: MAB	CITY COMMENTS
DATE PREPARED: 11-17-2021	CITY COMMENTS
PROJ. NUMBER: 20-189	CITY COMMENTS

LINE 1 PLAN & PROFILE

SHEET

3

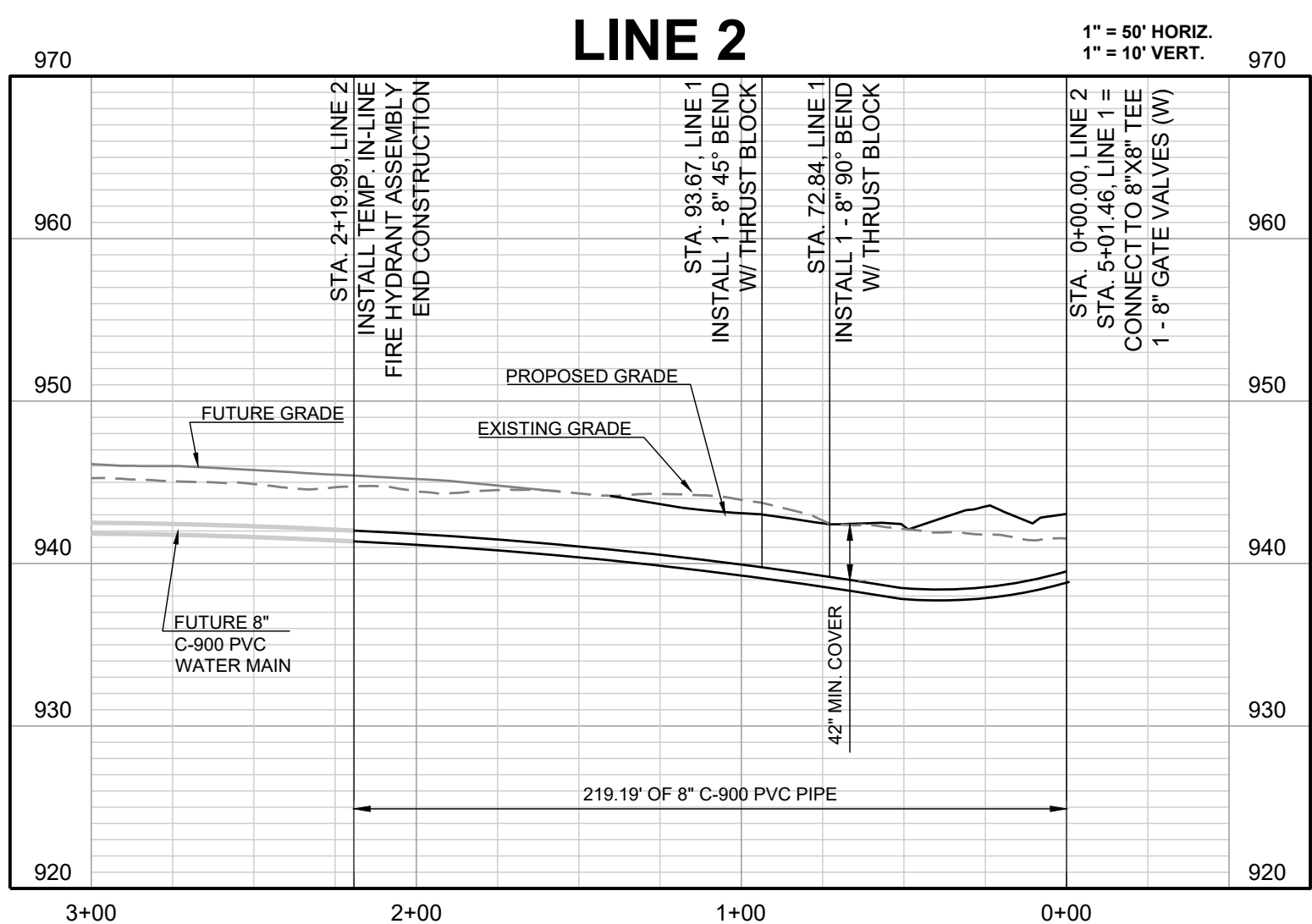
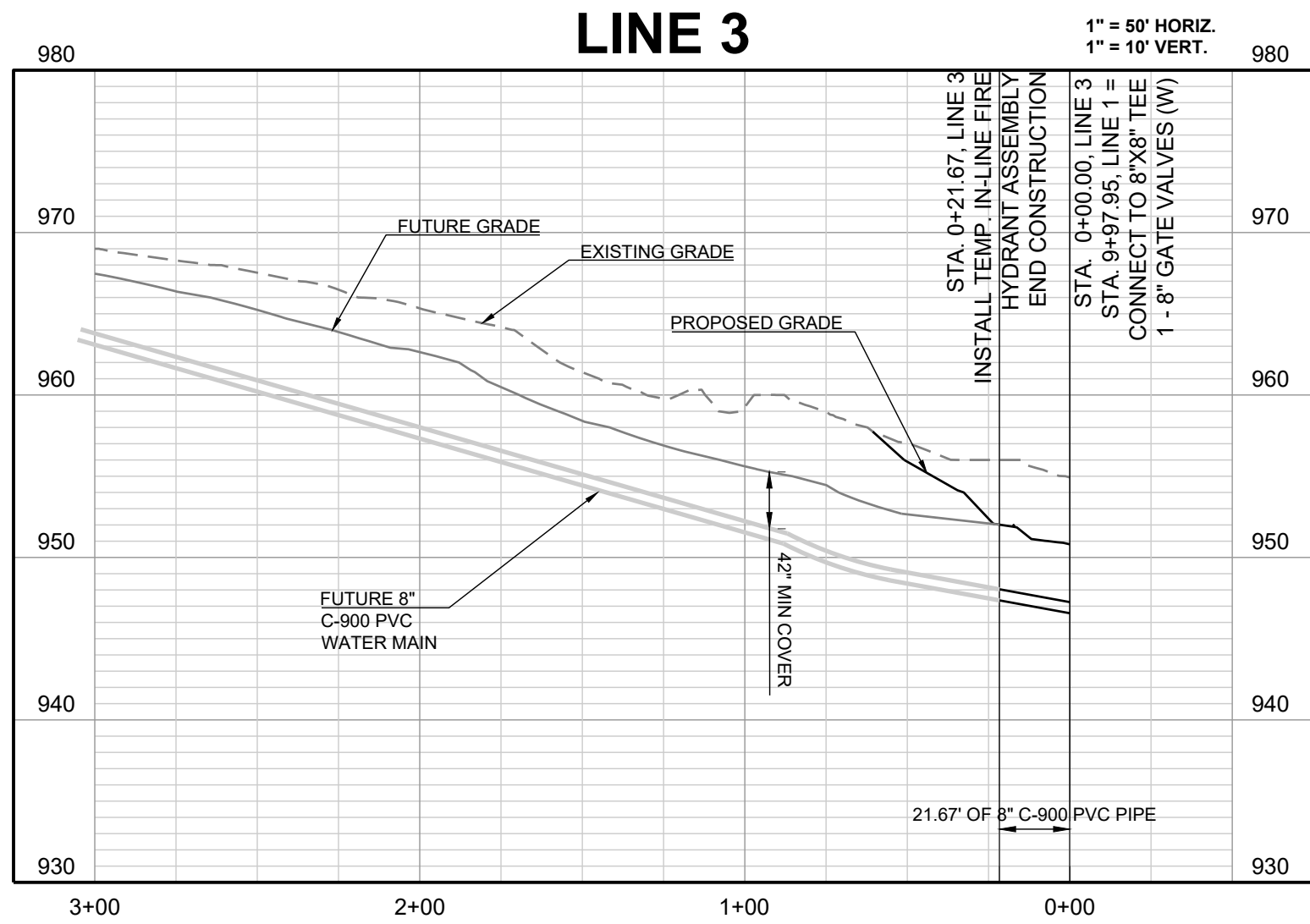
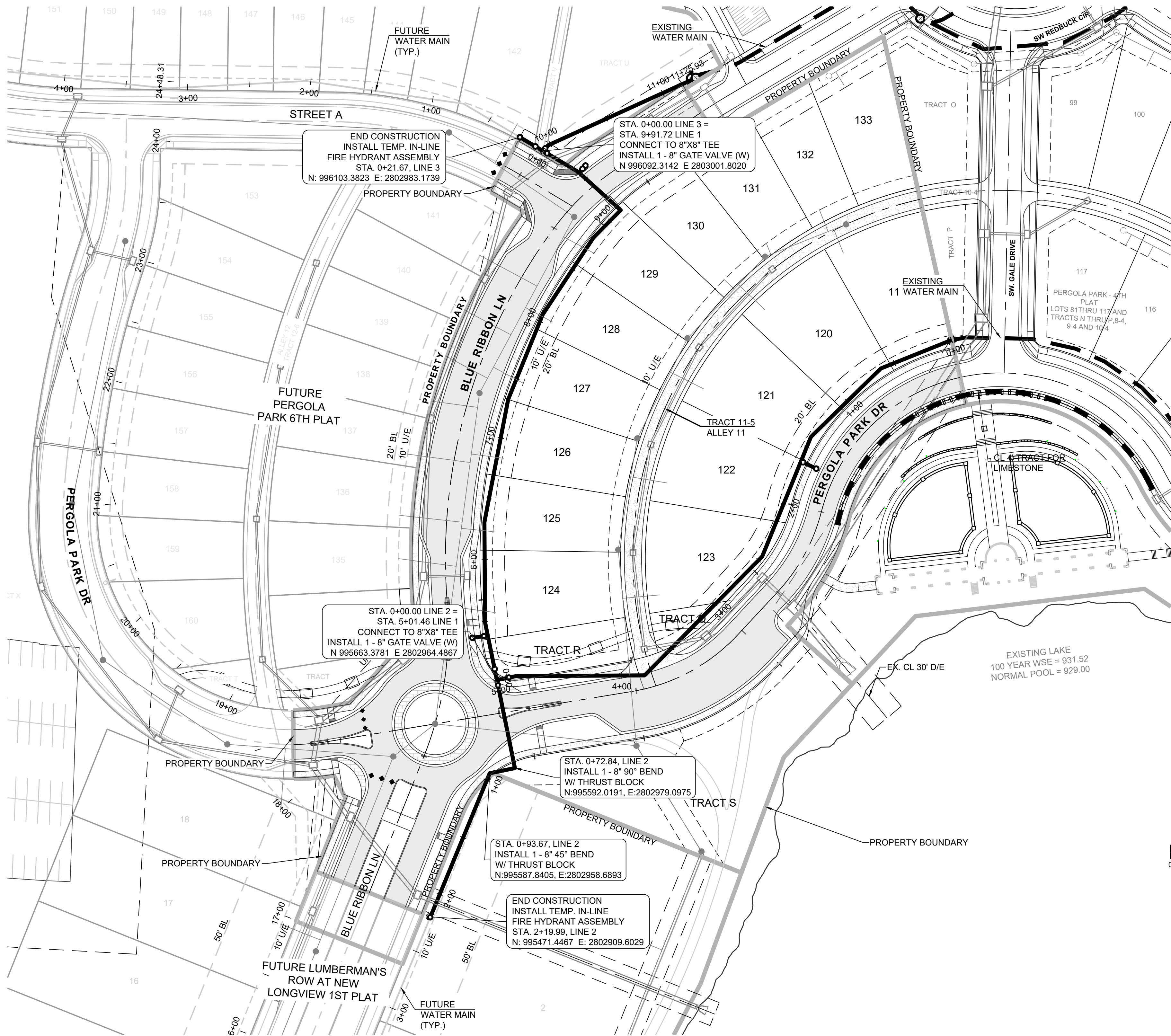
GENERAL NOTES:

1. ALL CONSTRUCTION TO FOLLOW THE CITY OF LEE'S SUMMIT DESIGN AND CONSTRUCTION MANUAL AS ADOPTED BY ORDINANCE 5813.
2. THE CONTRACTOR IS RESPONSIBLE FOR VERIFYING ALL EXISTING UTILITY LOCATIONS PRIOR TO EXCAVATIONS.
3. FOR ALL WATER LINES THE MAXIMUM DEPTH OF COVER IS SEVEN (7) FEET.

PROJECT BENCHMARK:

CHISELED "SQUARE" ON STORM CURB INLET AT NORTHWEST INTERSECTION OF SW. TOWER PARK DRIVE AND SW. LONGVIEW BOULEVARD.

NORTHING: 998893.4148
EASTING: 2803318.5413
ELEV. 1004.09

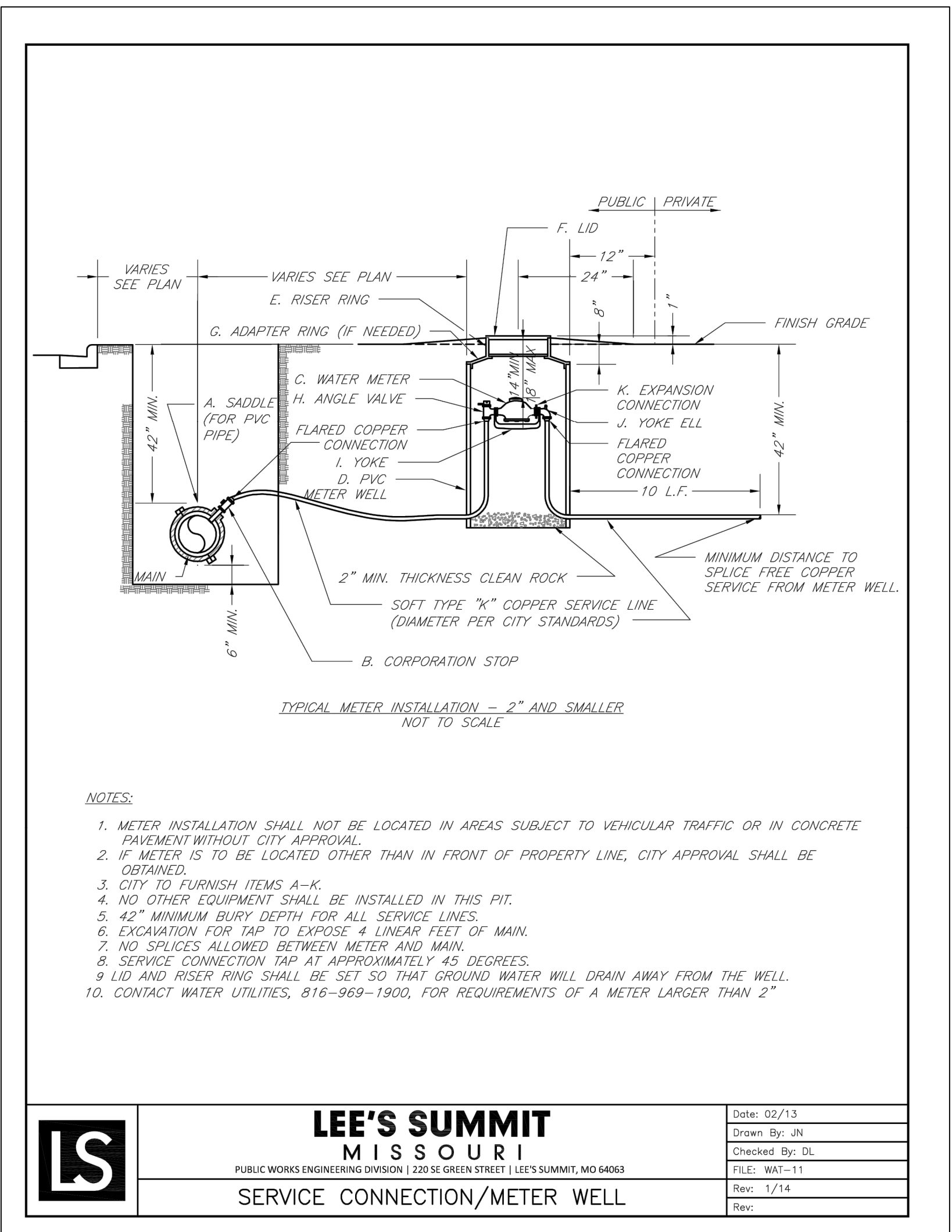
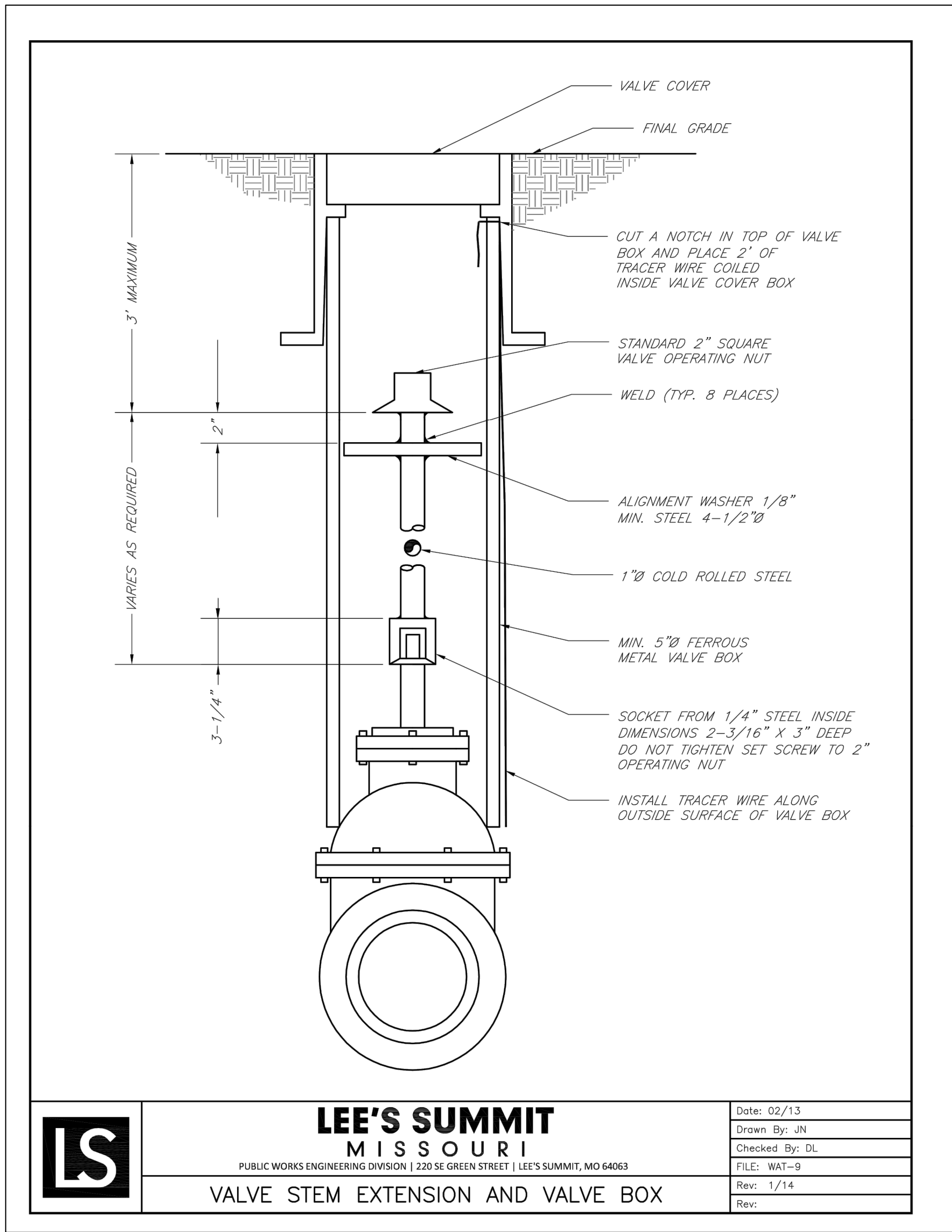
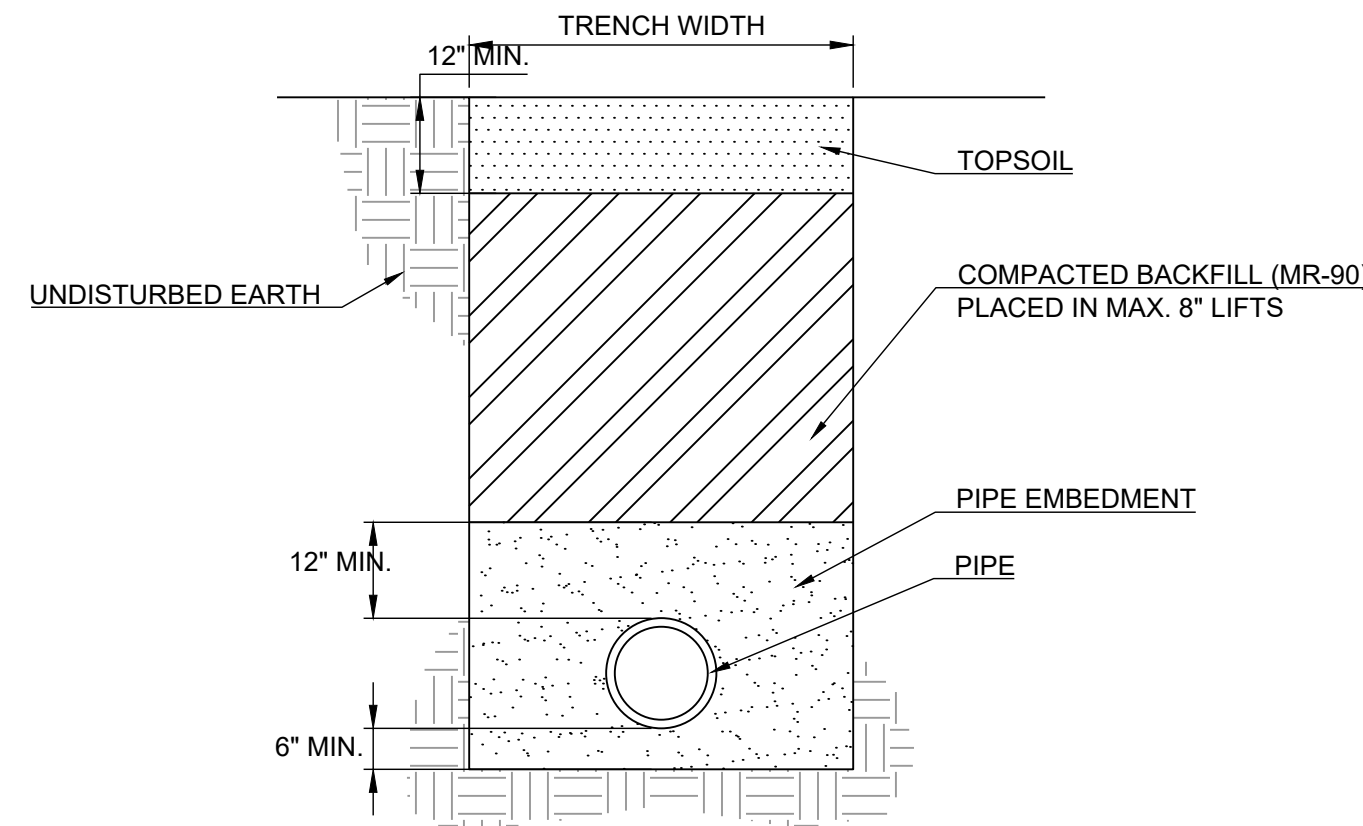
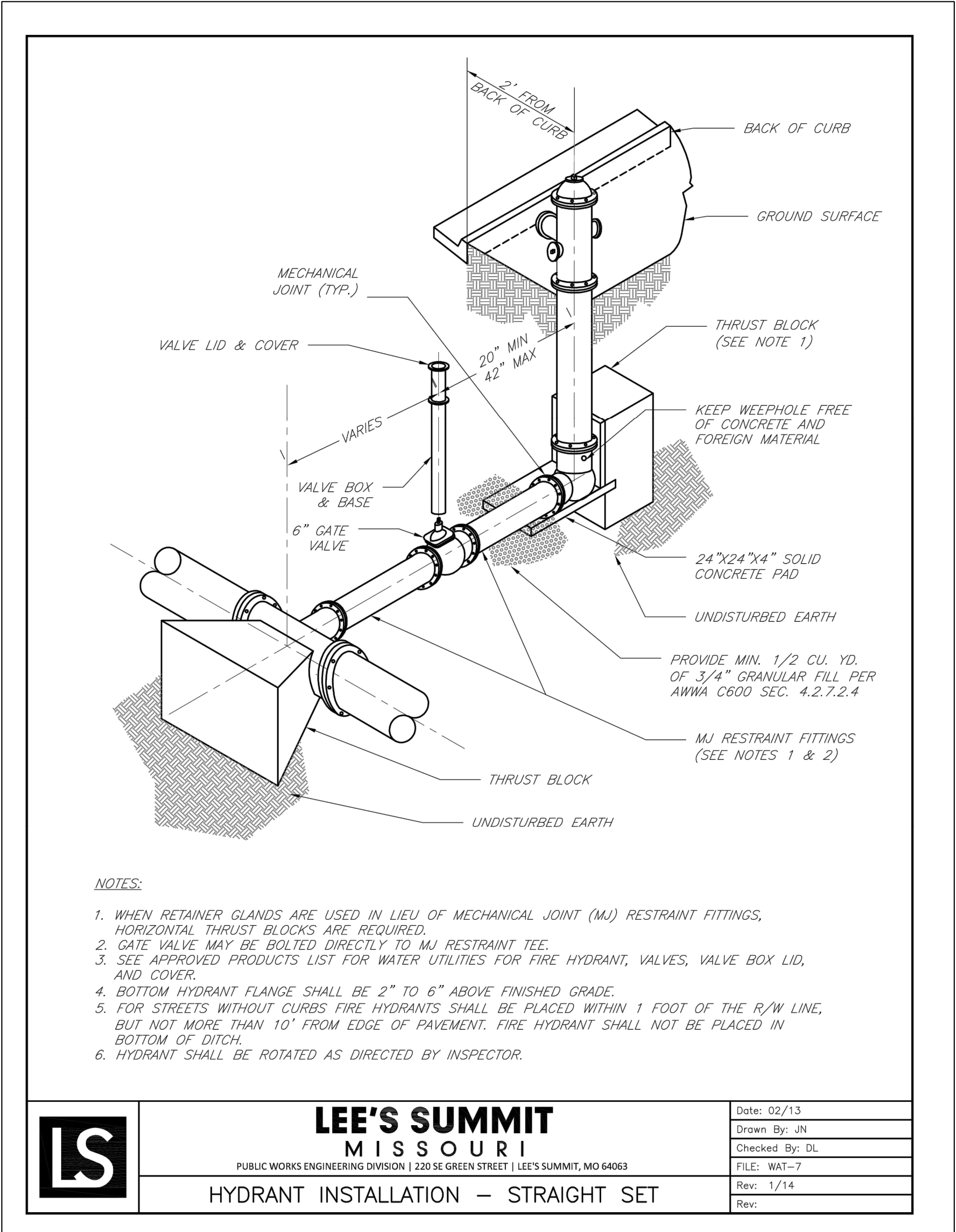
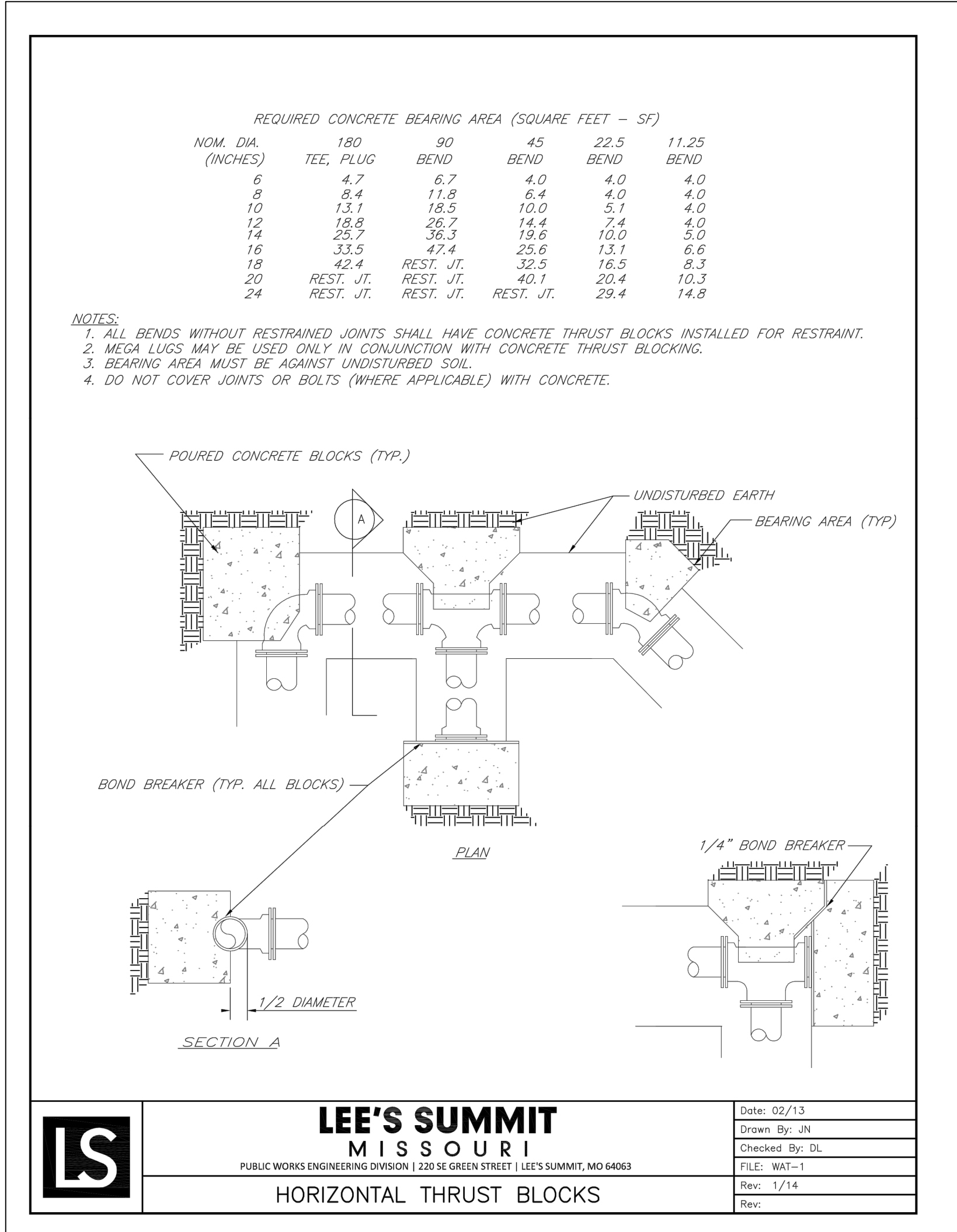


REVISION DATE	DESCRIPTION
2-4-22	CITY COMMENTS
3-23-22	CITY COMMENTS
6-21-22	CITY COMMENTS
8-16-22	CITY COMMENTS
11-17-2021	DATE PREPARED
20-189	PROJ. NUMBER

LINES 2 & 3 PLAN & PROFILE

SHEET

4



REVISION	DATE	DESCRIPTION
1	2-4-22	CITY COMMENTS
2	3-23-22	CITY COMMENTS
3	6-21-22	CITY COMMENTS
4	8-16-22	CITY COMMENTS
5		
6		
7		
8		
9		
10		

DRAWN BY:	BAL
CHECKED BY:	MAB
DATE PREPARED:	11-17-2021
PROJ. NUMBER:	20-189