

15 0 15 30 45 75
feet
scale: 1" = 30'-0"

2214800 K1 Speed - Lee's Summit, Mo
X:\2214800\Design\Photometrics\01-2214800_ME201P.dwg
Thursday, August 4, 2022 12:49:54 PM
Charles Booty

PROJECT NAME:
AUTOCAD FILE LOCATION \ NAME:
LAST CORRECTION BY • DATE • TIME:
PLOTTED BY • DATE • TIME:

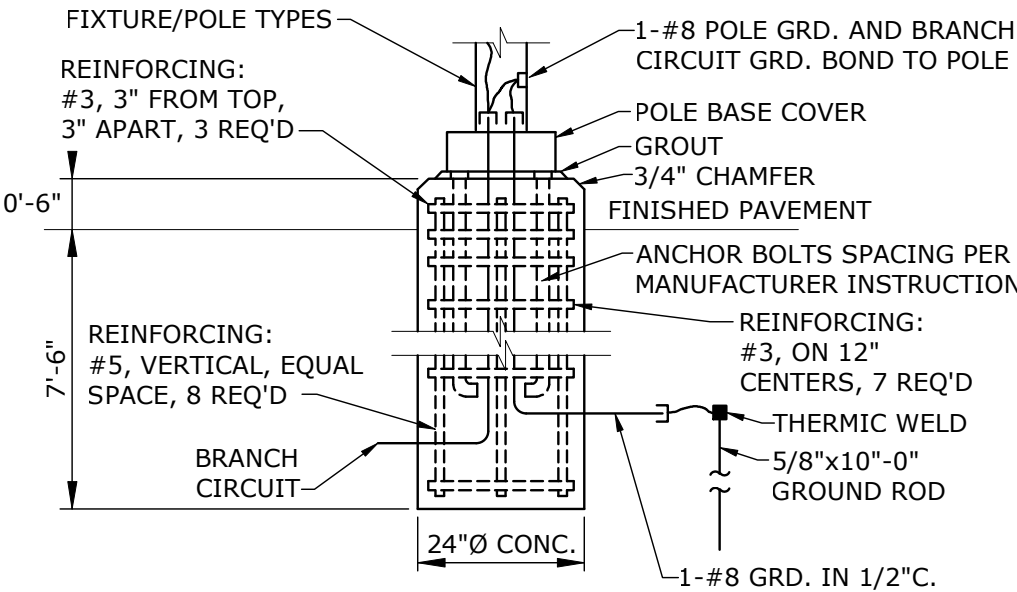
| FIXTURE SCHEDULE | | | | | | |
|------------------|--|---------------|------------------------------|---------------|---|--------|
| TYPE | DESCRIPTION | MOUNTING | LAMP | VOLTS | MANUFACTURER | V-A |
| PP2 | ARCHITECTURAL PEDESTRIAN POLE. M1075 29" LENGTH HEAD. TYPE 2 DISTRIBUTION. HOUSE SIDE SHIELD. 750 mA DRIVER. ARCHITECT TO SELECT FINISH OF FIXTURE & POLE. PROVIDE WITH STRUCTURA SQUARE STEEL POLE 16'-0" MOUNT TO "SIDE A" OF POLE AT TOP OF POLE. | CONCRETE BASE | LED 4620 LUMENS 4000K 70 CRI | UNV | STRUCTURA - LINEAL SERIES OR APPROVED EQUAL | 40 |
| PP4 | ARCHITECTURAL PEDESTRIAN POLE. M1075 29" LENGTH HEAD. TYPE 4 DISTRIBUTION. HOUSE SIDE SHIELD. 750 mA DRIVER. ARCHITECT TO SELECT FINISH OF FIXTURE & POLE. PROVIDE WITH STRUCTURA SQUARE STEEL POLE 16'-0" MOUNT TO "SIDE A" OF POLE AT TOP OF POLE. | CONCRETE BASE | LED 4620 LUMENS 4000K 70 CRI | UNV | STRUCTURA - LINEAL SERIES OR APPROVED EQUAL | 40 |
| SA | 18FT TOTAL LENGTH LINEAR INGROUND EXTERIOR LED FIXTURE. WALL WASH OPTICS. 0-10V DIMMING DRIVER. IP68 RATING. | RECESSED | LED 909 LUM/FT 4000K 80 CRI | UNV | LUMENPULSE - LUMENFACADE INGROUND OR APPROVED EQUAL | 5 LF |
| SD SDX | 6" WET LOCATION LED DOWNLIGHT. OPEN REFLECTOR. WIDE DISTRIBUTION. CLEAR SEMI-SPECULAR TRIM. 0-10V DIMMING DRIVER X = EMERGENCY BATTERY PACK. | RECESSED | LED 1000 LUMENS 4000K 80 CRI | UNV | HE WILLIAMS - 6DR SERIES OR APPROVED EQUAL | 8.7 |
| SF | EXTERIOR SINGLE HEAD LED FLOODLIGHT/COLUMN PROJECTOR. 1-10V DIMMING DRIVER. VERY WIDE DISTRIBUTION (58 X 67 DEGREE) ARCHITECT TO SELECT FINISH. | SURFACE | LED 4874 LUMENS 4000K 80 CRI | 208 (1-PHASE) | LIGMAN - KWH7 KWH-50001 SERIES | 54 |
| SG1 | 4FT LONG EXTERIOR LINEAR GRAZING FIXTURE. 10x10 DEGREE OPTICS. INTEGRAL 0-10V DIMMING DRIVER. WET LOCATION RATED. ARCHITECT TO SELECT FINISH. | SURFACE | LED 466 LUM/FT 4000K 80 CRI | 277 | INSIGHT LIGHTING - MEDLEY EXTERIOR SERIES OR PRE-APPROVED EQUAL | 3.5 LF |
| SG2 | 8FT LONG EXTERIOR LINEAR GRAZING FIXTURE. 10x10 DEGREE OPTICS. INTEGRAL 0-10V DIMMING DRIVER. WET LOCATION RATED. ARCHITECT TO SELECT FINISH. | SURFACE | LED 466 LUM/FT 4000K 80 CRI | 277 | INSIGHT LIGHTING - MEDLEY EXTERIOR SERIES OR PRE-APPROVED EQUAL | 3.5 LF |

| FIXTURE SCHEDULE | | | | | | |
|------------------|--|------------------|--|---------------|--|--------------|
| TYPE | DESCRIPTION | MOUNTING | LAMP | VOLTS | MANUFACTURER | V-A |
| SM | POLE COLUMN PROJECTOR FLOOD 4x9 LED FIXTURE. 13'-0" POLE. MODULAR LOCATION PER MANUFACTURER RECOMMENDATIONS. INTEGRAL DALI DIMMING CONTROLS. WIDE OPTIC (34 DEGREE). PROVIDED WITH TOTAL (4) HEADS. VERIFY WITH MANUFACTURER. | POLE BASE | (4) LED HEADS 2108 LUM/HEAD 4000K 80 CRI | 208 (1-PHASE) | LIGMAN - LADOR LD-20011 SERIES OR PRE-APPROVED EQUAL | 21 PER HEAD |
| SP2 | SINGLE HEAD ARCHITECTURAL LED EXTERIOR PARKING LOT FIXTURE. ARCHITECT TO SELECT FINISH. TYPE 2 DISTRIBUTION WITH HOUSESIDE SHIELD. 800mA DRIVE CURRENT, UL LISTED FOR WET LOCATION. PROVIDE WITH 27.5" SQUARE STEEL POLE. MOUNT HEAD TO SIDE OF POLE (TENON MOUNTING PROHIBITED). INTEGRAL 10% 0-10V DIMMING DRIVER. | CONCRETE BASE 6" | LED 11,508 LUMENS 4000K 70 CRI | 120 | MCGRAW-EDISON GALLEON II LITHONIA SERIES DSX1 BEACON SERIES VPL GARDCO SERIES P26 LSI SERIES MRM OR PRE-BID APPROVED EQUAL | 121 |
| SP5 | DOUBLE HEAD 180 DEGREE APART ARCHITECTURAL LED EXTERIOR PARKING FIXTURE. ARCHITECT TO SELECT FINISH. TYPE 5WQ DISTRIBUTION. 800mA DRIVE CURRENT, UL LISTED FOR WET LOCATION. PROVIDE WITH 27.5" SQUARE STEEL POLE. MOUNT HEAD TO SIDE OF POLE (TENON MOUNTING PROHIBITED). INTEGRAL 10% 0-10V DIMMING DRIVER. | CONCRETE BASE 6" | LED 17,778 LUMENS 4000K 70 CRI | 120 | MCGRAW-EDISON GALLEON II LITHONIA SERIES DSX1 BEACON SERIES VPL GARDCO SERIES P26 LSI SERIES MRM OR PRE-BID APPROVED EQUAL | 121 PER HEAD |
| ST | OUTDOOR LED TAPE LIGHT. 0-10V DIMMABLE MODULE/DRIVER. APPROXIMATELY 40 INCH LENGTH OF TAPE. HARDWARE FEED. REFER TO SITE PLAN AND MEASURE OFF PLANS. PROVIDE BENDABLE CHANNEL CH-602. *MAY NEED TO CONSULT FACTORY.* | SURFACE | LED 250 LUM/FT 4000K 90 CRI | 120 | KELVIX - OREX SERIES | 3 LF |
| SW WPX | LARGE 12" LENGTH OUTDOOR WALL WASHING FLOOD LED FIXTURE. PROVIDE NECESSARY ACCESSORIES TO MOUNT FROM GROUND TO WASH WALL. 0-10V DIMMING DRIVER. ARCHITECT TO SELECT FINISH. | GROUND MOUNT | LED 3160 LUMENS 4000K 80 CRI | UNV | ELLIPTIPAR - S172 LED SERIES OR PRE-APPROVED EQUAL | 27 |
| WPX | EXTERIOR WALLPACK LED. WET LOCATION RATED. 0-10V DIMMING DRIVER. TYPE 3 OR WIDE DISTRIBUTION. ARCHITECT TO SELECT FINISH. X = EMERGENCY BATTERY PACK. | WALL | LED 3,000 LUMENS 4000K 70 CRI | UNV | HE WILLIAMS VWPV SERIES LITHONIA WDGE2 LED SERIES OR APPROVED EQUAL | 36 |

CALCULATION SUMMARY

| AREA NAME | AVE | MAX | MIN | AVE/MIN | MAX/MIN |
|-----------------------|------|------|------|---------|---------|
| GARAGE ENTRY/DRIVEWAY | 3.2 | 10.7 | 0.6 | 6.4 | 21.4 |
| PARKING LOT | 2.4 | 4.2 | 0.7 | 3.4 | 6.0 |
| DRIVE LANE - BACKSIDE | 1.9 | 4.6 | 0.7 | 2.8 | 6.6 |
| PROPERTY LINE | 0.48 | 2.10 | 0.00 | N.A. | N.A. |

NOTES:
1. ILLUMINANCE VALUES ARE IN FC.
2. MAINTENANCE FACTOR OF 0.9 WAS USED AS FIXTURES ARE LED.



- NOTES:
1. CONCRETE BASES SHALL BE 4000 PSI COMPRESSIVE STRENGTH AIR ENTRAINED CONCRETE MINIMUM, CAST IN PLACE OR PRE-CAST. REINFORCING # TIES SHALL EXTEND FULL LENGTH OF BASES ST 12" O.C., WITH ADDITIONAL TIES AT TOP.
 2. ANCHOR BOLTS AND BASE PLATE TEMPLATE SHALL BE PROVIDED BY LIGHTING POLE MANUFACTURER TO VENDOR FOR BASES PRIOR TO CONSTRUCTION.

POLE BASE DETAIL

SCALE: NOT TO SCALE

smith & boucher
engineers
25618 west 103rd St. olathe, ks 66061
phone 913.345.2127 fax 913.345.0617
project number 2214800-P

SITE PLAN - PHOTOMETRICS

Project #: 211107
Final Development Plan
20 June 2022

| # | Revisions: |
|----|-------------------------------------|
| 01 | FDP-CITY REVIEW COMMENTS 07/22/2022 |
| | |
| | |
| | |
| | |
| | |
| | |
| | |
| | |
| | |

K-1 Speed
Entertainment Complex
D4 Holdings
Strother Crossing
2011 NE Independence Avenue, Lee's Summit, MO 64063

SAI
SLAGGIE ARCHITECTS, INC. © 2022
Kansas City, Missouri • Omaha, Nebraska
888.756.1938
slaggie.com

NOT FOR CONSTRUCTION

ME201P