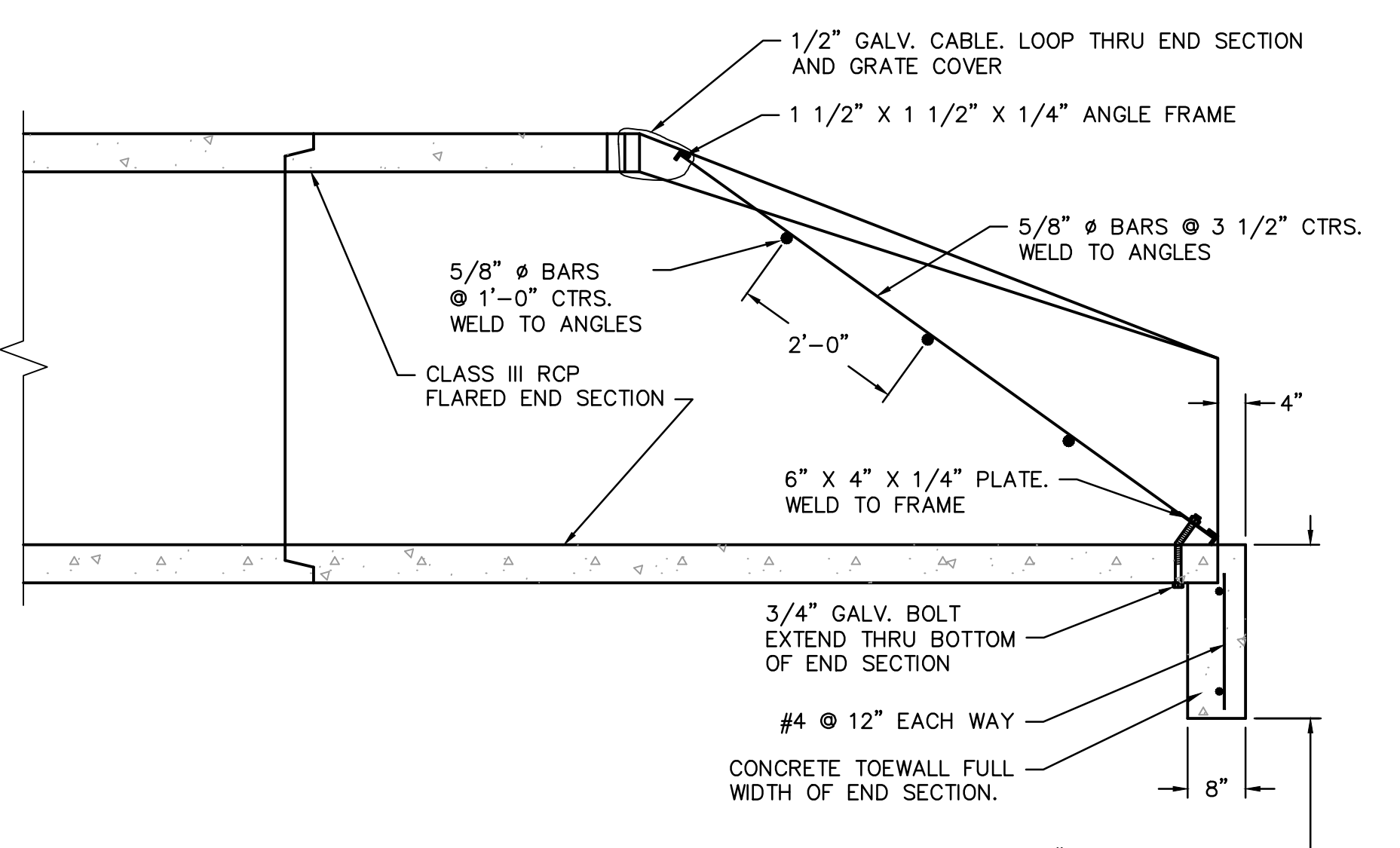


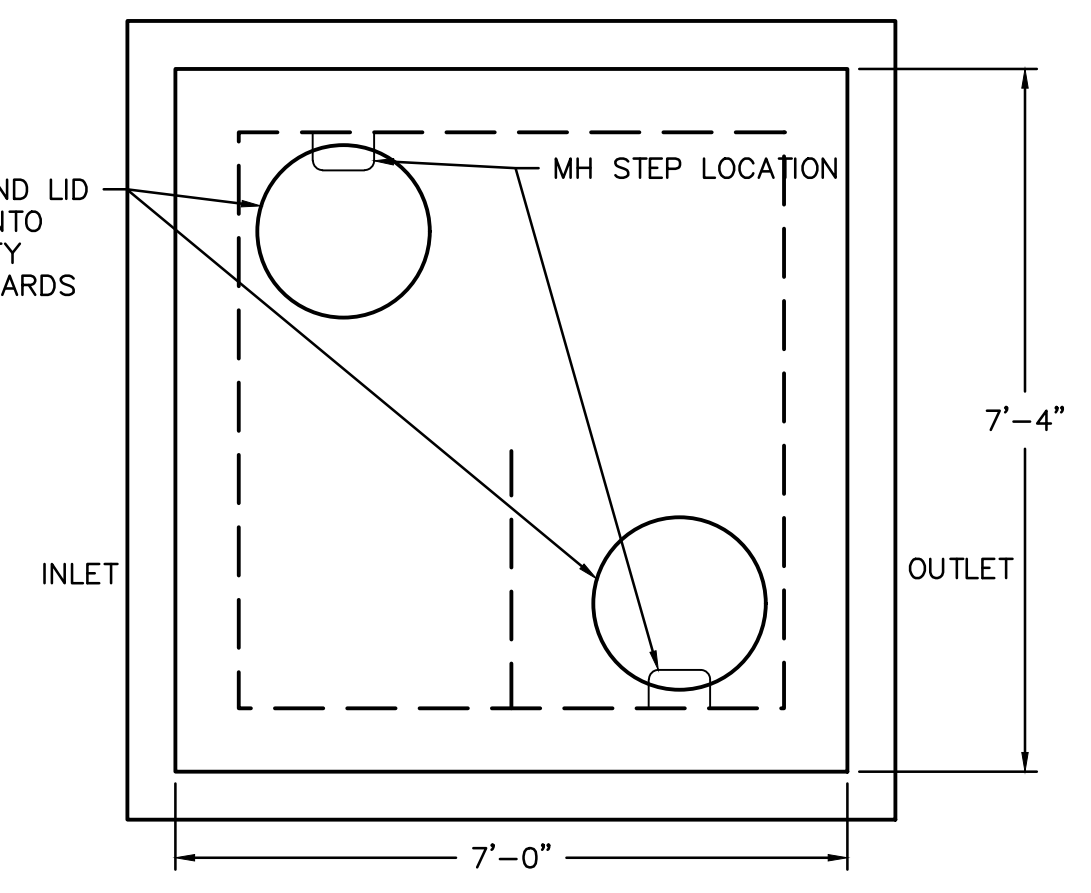
PLANVIEW



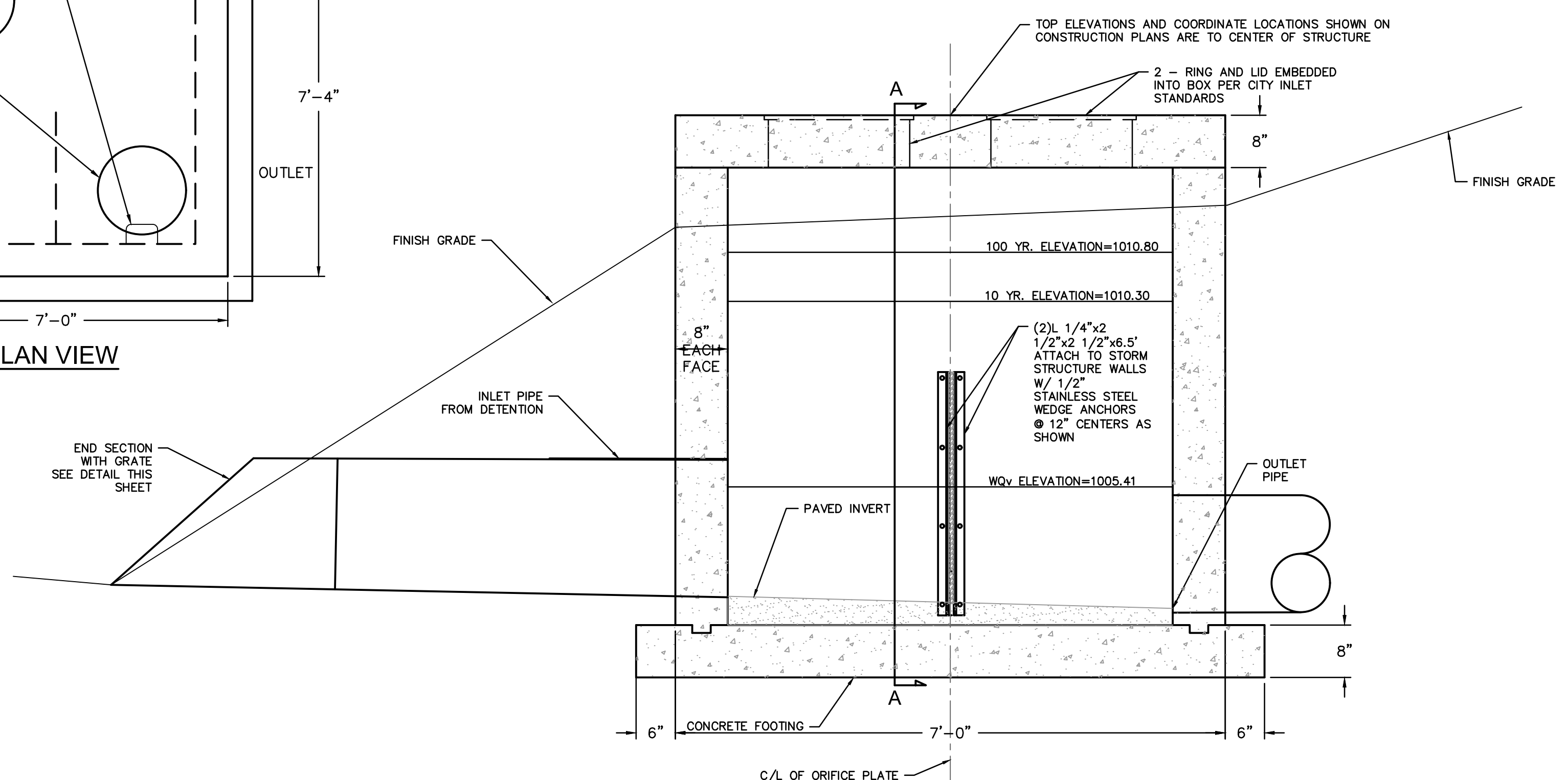
SECTION A-A

- END SECTION NOTES**
1. GRATE COVER DETAIL SHALL BE ADJUSTED AS NECESSARY TO FIT END SECTION PROVIDED.
 2. MAXIMUM OPENING THRU END SECTION SHALL BE NO GREATER THAN 6". ADJUST DETAIL AS NECESSARY.
 3. ALL METAL SURFACES SHALL BE HOT DIP ZINC COATED IN ACCORDANCE WITH ASTM A-123.
 4. USE CITY APPROVED CONCRETE THROUGHOUT.
 5. ALL CONCRETE AND MATERIALS USED IN THIS WORK SHALL MEET THE REQUIREMENTS OF THE GOVERNING BODY.
 6. REINFORCING STEEL SHALL BE NEW BILLET, MINIMUM GRADE 40 AS PER ASTM A615, AND SHALL BE BENT COLD.
 7. ALL DIMENSIONS RELATIVE TO REINFORCING STEEL ARE TO CENTERLINE OF BARS. 2" CLEARANCE SHALL BE PROVIDED THROUGHOUT UNLESS NOTED OTHERWISE. TOLERANCE OF $\pm 1/8"$ SHALL BE PERMITTED.
 8. ALL LAP SPLICES NOT SHOWN SHALL BE A MINIMUM OF 40 BAR DIAMETERS IN LENGTH.
 9. ALL DOWELS SHALL BE ACCURATELY PLACED AND SECURELY TIED IN PLACE PRIOR TO PLACEMENT OF BOTTOM SLAB CONCRETE. STICKING OF DOWELS INTO FRESH OR PARTIALLY HARDENED CONCRETE WILL NOT BE ACCEPTABLE.
 10. ALL REINFORCING STEEL SHALL BE SUPPORTED ON FABRICATED STEEL BAR SUPPORTS \odot 3'-0" MAXIMUM SPACING.
 11. DO NOT SCALE THESE DRAWINGS FOR DIMENSIONS OR CLEARANCES. ANY QUESTIONS REGARDING DIMENSIONS SHALL BE BROUGHT TO THE ATTENTION OF THE ENGINEER PRIOR TO CONSTRUCTION.

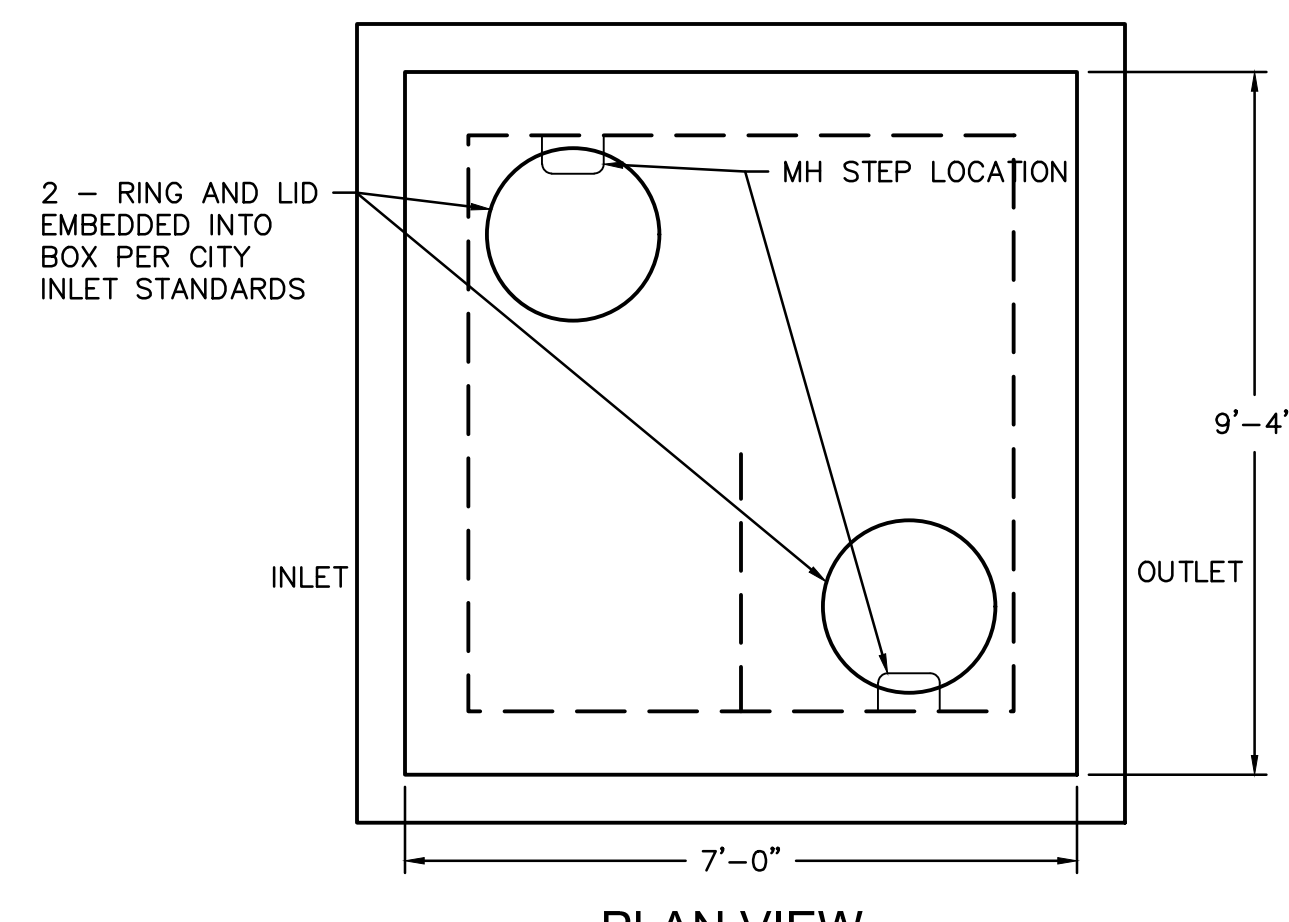
END SECTION TOE WALL WITH GRATE
NOT TO SCALE



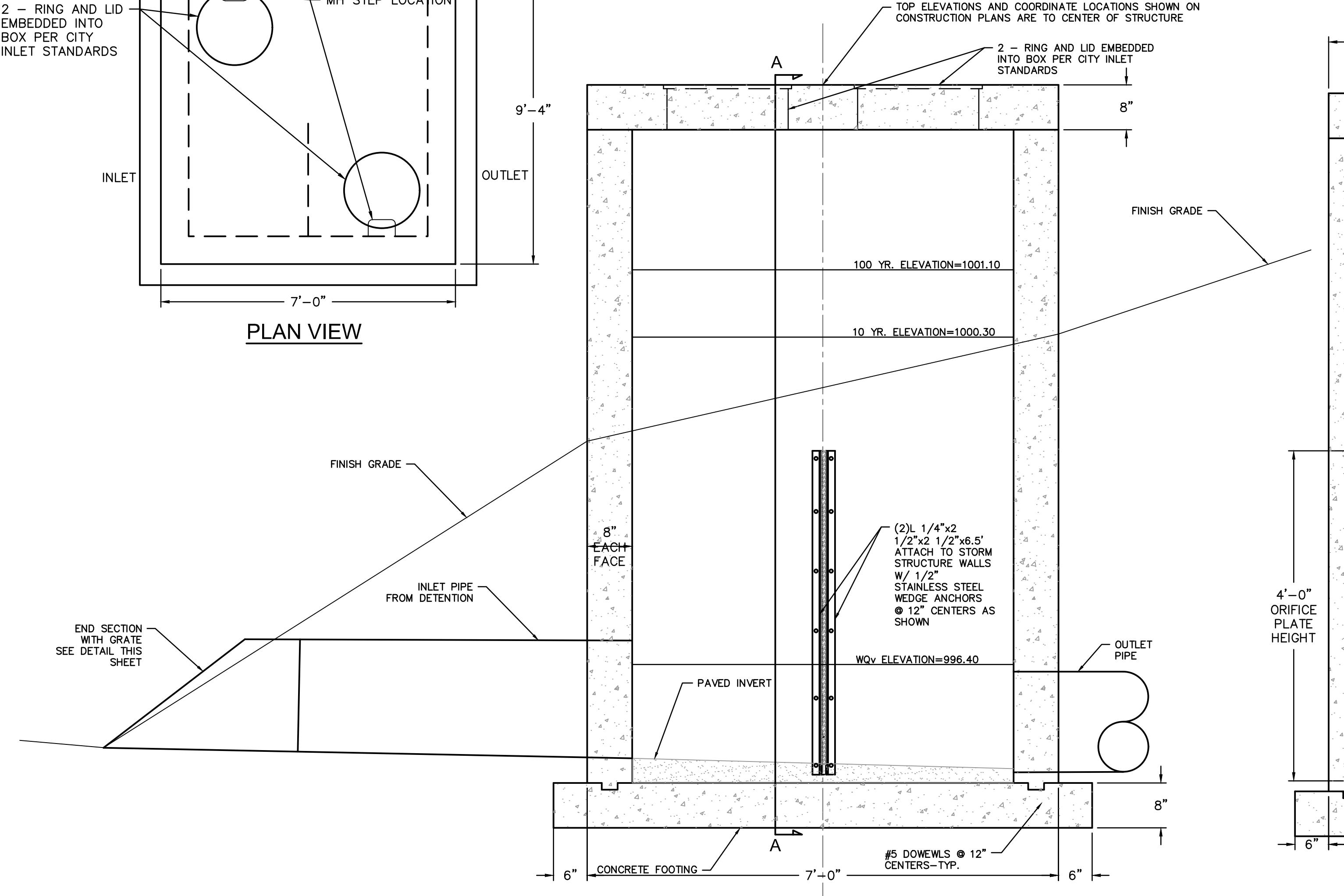
PLAN VIEW



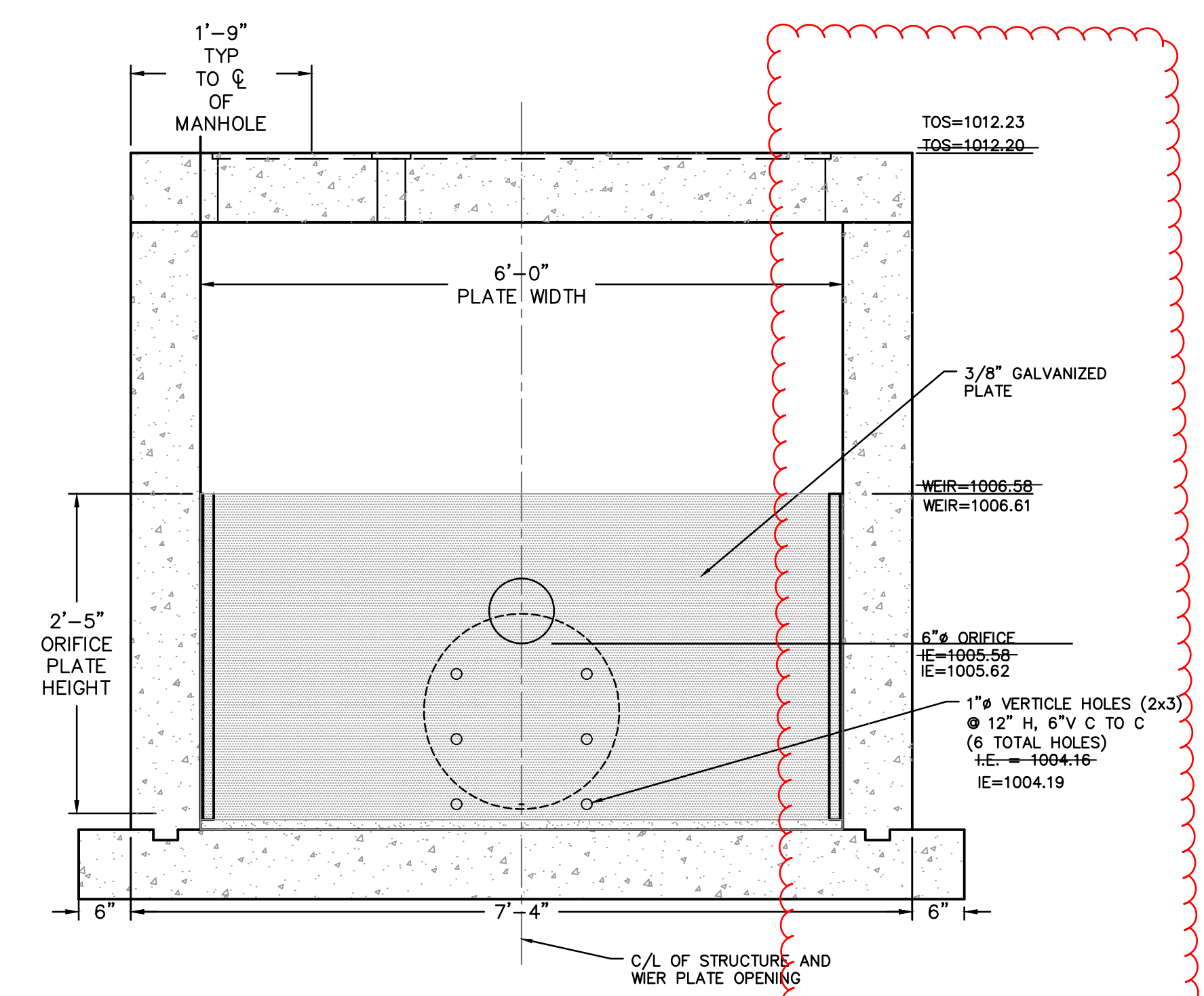
PROFILE VIEW



PLAN VIEW

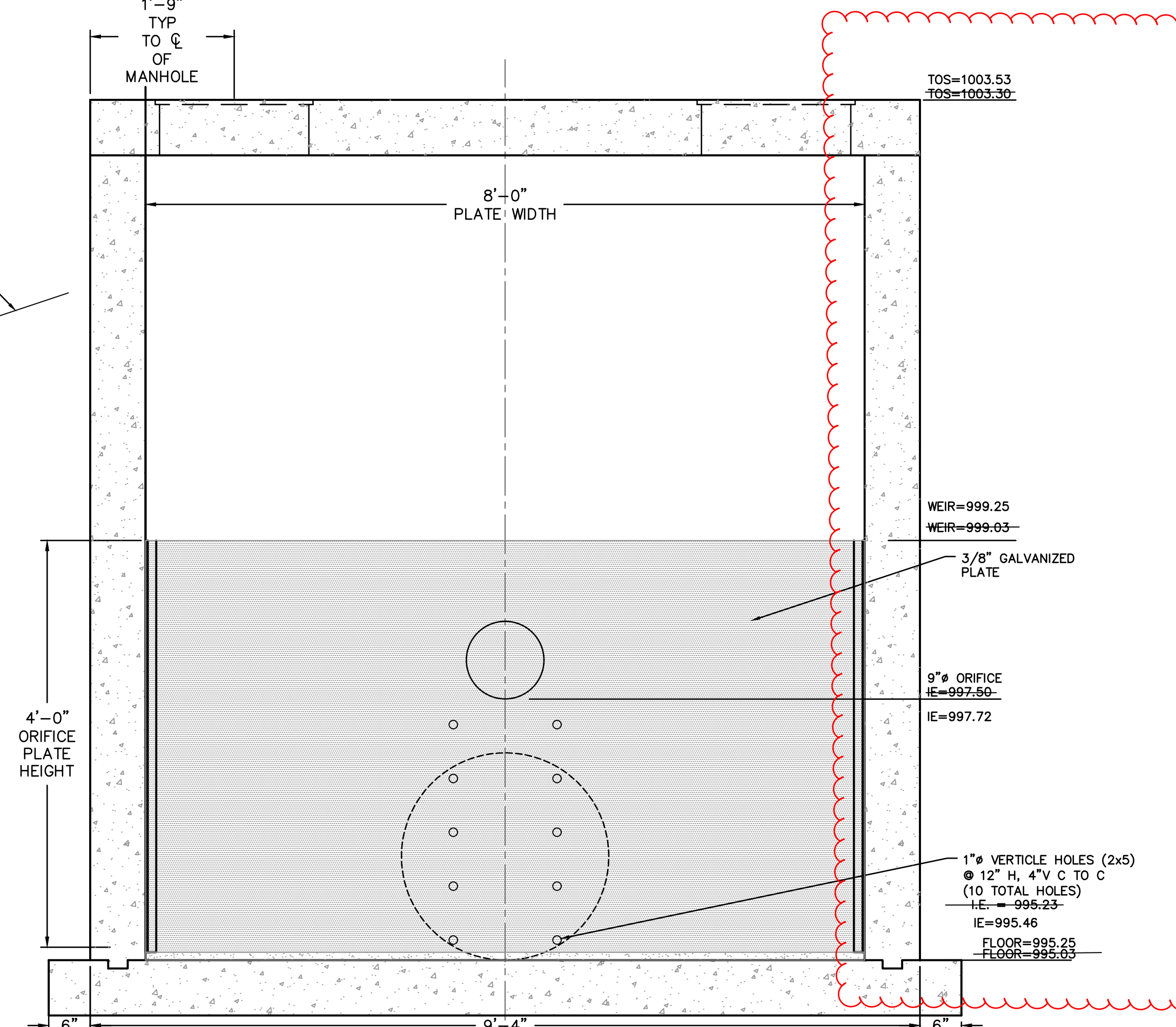


PROFILE VIEW

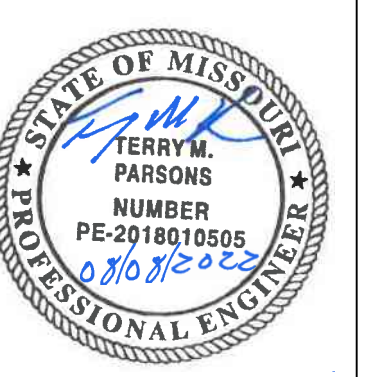


SECTION A-A
CONTROL STRUCTURE EDD-1 (STRUCTURE B3)

DETENTION AS-BUILTS
08-08-2022



SECTION A-A
CONTROL STRUCTURE EDD-2 (STRUCTURE D2)



Olsson
OLSSON, CIVIL ENGINEERING
MISSOURI CERTIFICATE OF AUTHORITY #001582
7301 West 133rd Street, Suite 200
Overland Park, KS 66214-7750
TEL: 913.381.1170
www.olsson.com

LEE'S SUMMIT MIDDLE SCHOOL #4
LEE'S SUMMIT R-7 SCHOOL DISTRICT
1001 SE BAILEY ROAD
LEE'S SUMMIT, MO 64881

PACKAGE 2 -
STRUCTURAL & SITE
UTILITIES
ISSUED FOR PERMIT
08/28/20
PRO02R 01.14.21

13-20102-00
STANDARD
DETAILS

C1057

DWG: F:\2020\0001-0500\0201-0103\40-Design\AutoCAD\Final\Plans\Sheets\GNCA\CONSTRUCTION DOCUMENTS\C-DTL01_0200103.dwg
DATE: Aug 09, 2022 12:10pm
XREFS: C:\LS_PBASE_80330
C:\LS_PBASE_80330
C:\LS_PBASE_80330
C:\LS_PBASE_80330
C:\LS_PBASE_61023
TE DETAIL
C:\LS_PBASE_61023
C:\LS_PBASE_80330
C:\PTBLK_0200103