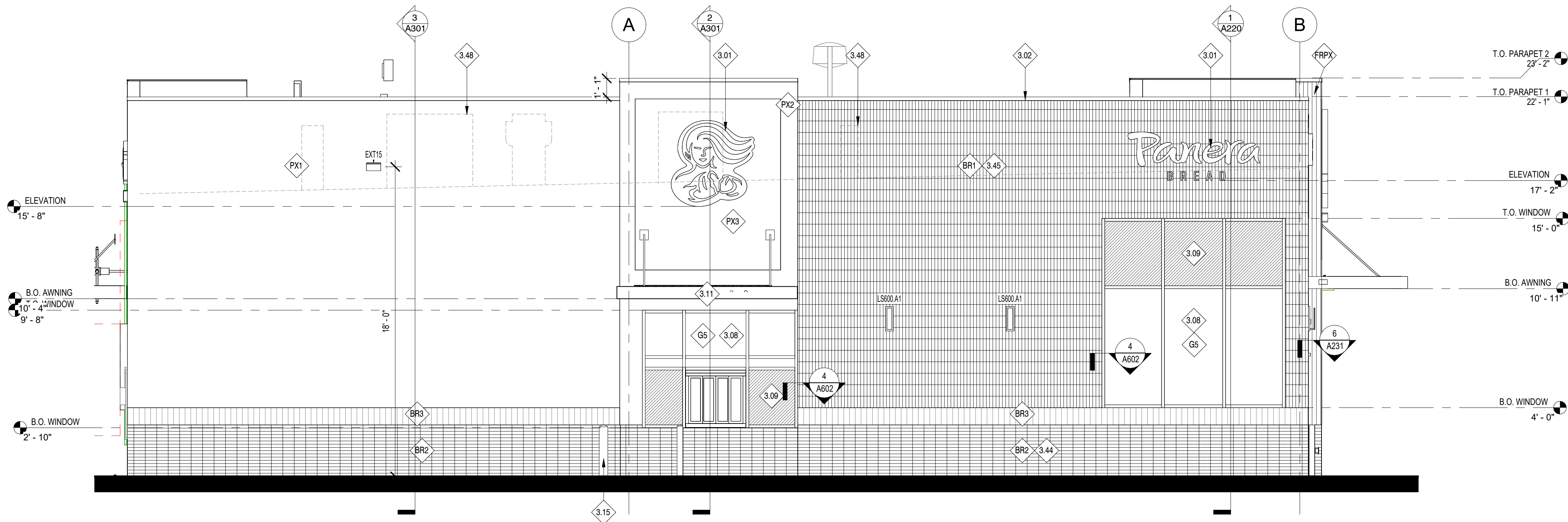


8/4/2022 10:46:14 AM

PR 2021.03.11

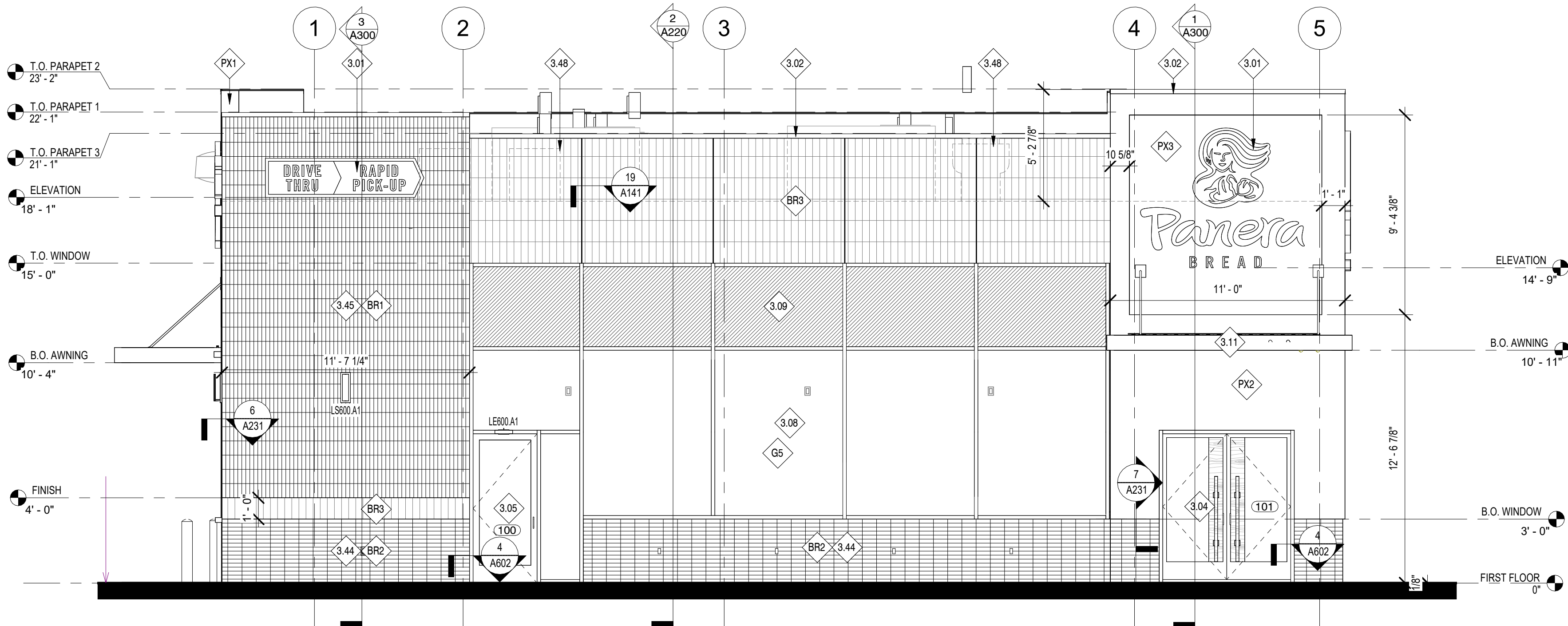
1 ELEVATION - SOUTH

1/4" = 1'-0"



24 ELEVATION - EAST

1/4" = 1'-0"



GENERAL NOTES:

- A. ALL GLAZING TO BE G1 UNLESS NOTED OTHERWISE. FOR STOREFRONT / WINDOW ELEVATIONS SEE SHEET A611.

KEYED NOTES

- 3.01 LOCATION OF INTERNALLY ILLUMINATED CLIP LETTERS AND/OR TRADEMARK SYMBOL. PROVIDED AND INSTALLED BY TENANT SIGN VENDOR UNDER SEPARATE PERMIT. G.C. TO PROVIDE BLOCKING IN WALL FOR SIGN AND PROVIDE ACCESS PANEL ON BACKSIDE OF PARAPET FOR ACCESS AS REQUIRED. (UNDER SEPARATE SIGNAGE PERMIT)
- 3.02 PRE-FINISHED METAL 2-PIECE SNAP-ON COMPRESSION COPING BY DUROLAST OR SIMILAR | COLOR: CHARCOAL TO MATCH RAL 7043
- 3.04 MAIN ENTRANCE/EXIT | REFER TO FLOOR A601 & A602 FOR FURTHER INFORMATION.
- 3.05 SECONDARY ENTRANCE/EXIT | REFER TO A601 & A602 FOR ADDITIONAL INFORMATION.
- 3.08 ALUMINUM STOREFRONT SYSTEM WITH 1" INSULATED GLAZING BY PANERA. REFER TO SHEET A602 FOR FURTHER INFORMATION.
- 3.09 ALUMINUM STOREFRONT SYSTEM WITH 1" INSULATED SPANDREL GLAZING BY PANERA. REFER TO SHEET A602 FOR FURTHER INFORMATION.
- 3.11 PRE-MANUFACTURED ALUMINUM CANOPY W/ TIE RODS WITH FINISHED UNDERSIDE. PROVIDED/INSTALLED BY SHELL G.C. | COLOR: DARK GREEN, PMS 2411C. CANOPOY TO INCLUDE LIGHTING, INTERNAL DRAIN (TO TIE INTO STORM), CANOPY UNDERSIDE TO HAVE FINISH TO MATCH (SF2).
- 3.15 6" DIA. CONCRETE BOLLARD | FINISH: PAINT TO MATCH ADJACENT P165 | REFER TO SHEET A040 FOR FURTHER INFORMATION
- 3.44 BR-1 TO BE INSTALLED HORIZONTALLY
- 3.45 BR-1 TO BE INSTALLED VERTICALLY
- 3.48 ROOFTOP EQUIPMENT WILL BE SCREENED BY PARAPET.
- BR1 BRICK MASONRY WALL SYSTEM | MFR: TABS WALL SYSTEM. UTILITY STACKED, VERTICAL PATTERN | COLOR: MCNEAR (THIN BRK.) + SANTIAGO CREATE MATERIALS CUSTOM BLEND (TABS WALL SYSTEM)
- BR2 BRICK MASONRY WALL SYSTEM | MFR: TABS WALL SYSTEM + THIN BRICK, UTILITY STACKED, HORIZONTAL PATTERN | COLOR: MCNEAR (THIN BRK.) + SANTIAGO CREATE MATERIALS CUSTOM BLEND (TABS WALL SYSTEM)
- BR3 BRICK MASONRY WALL SYSTEM | MFR: TABS WALL SYSTEM. UTILITY STACKED, VERTICAL PATTERN | COLOR: MCNEAR (THIN BRK.) + DUNSMUIR (TABS WALL SYSTEM)
- FRPX REINFORCED FIBERGLASS PANEL MATERIAL, PATTERN: CUSTOM VERTICAL RIBBED | COLOR: TBD GREEN TO MATCH PANTONE PMS 2307 C, FINISH: BASF, PRE-FINISHED.
- G5 ALUMINUM STOREFRONT | MFR: KAWNEER RIFAB VERRSAGLAZE 451T | FINISH: POWDER COAT | COLOR: IVORY | 2" x 6" PROFILE | THERMAL BREAK | 1" CLEAR INSULATED GLAZING: PPG SOLARBAN 70 (OR APPROVED EQUAL) | REFER TO SHEET A602 FOR ADDITIONAL INFORMATION
- PX1 EIFS SYSTEM | PRODUCT: DRYVIT OUTSULATION PLUS MD w/ MOISTURE DRAINAGE SYSTEM | TEXTURE: DRYVUT LIMESTONE DPR TEXTURED FINISH | PAINTED COLOR: #106 SUEDE
- PX2 EIFS SYSTEM | PRODUCT: DRYVIT OUTSULATION PLUS MD w/ MOISTURE DRAINAGE SYSTEM | TEXTURE: DRYVUT LIMESTONE DPR TEXTURED FINISH | PAINTED COLOR TO MATCH PMS 2307 C | 4" THICK FINISH
- PX3 EIFS SYSTEM | PRODUCT: DRYVIT OUTSULATION PLUS MD w/ MOISTURE DRAINAGE SYSTEM | TEXTURE: DRYVUT LIMESTONE DPR TEXTURED FINISH | PAINTED COLOR TO MATCH PMS 2307 C | 2" THICK FINISH

G.C. TO INSTALL AFTER CONSTRUCTION
BARRIER SIGN REMOVED - WITHOUT DRIVE THRU



SPECIFICATIONS:

- TWO SIDED BANNER
- MATERIAL: WHITE BANNER WITH GROMMETS
- GRAPHICS: DIGITALLY PRINTED
- HEIGHT: 4'-0"
- WIDTH: 12'-0"

INSTALLATION:

BANNERS PROVIDED BY PANERA AND TO BE INSTALLED ON EXTERIOR OF BUILDING BY G.C. PER PANERA PROVIDED HANGING INSTRUCTIONS AND PLACEMENT LOCATION(S).

ARCHITECT NOTE: SHOW DASHED BOX ON EXTERIOR ELEVATIONS WITH KEYED NOTE INDICATING G.C. TO INSTALL.

4 NEW CONSTRUCTION BANNER

1/4" = 1'-0"

Bakery-Cafe:

22169

SYSTEM: G4 (ARIA)

Project Team:

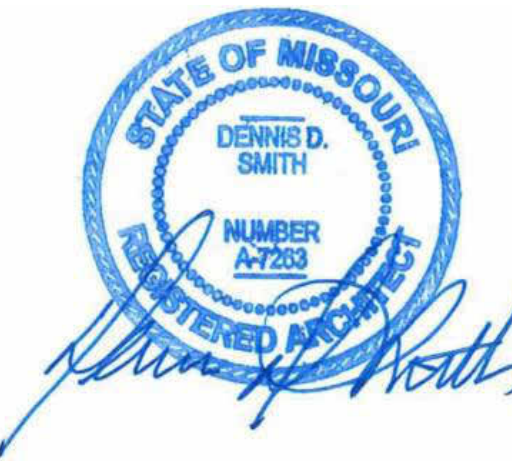


LK ARCHITECTURE, INC.

345 RIVERVIEW,
WICHITA, KS 67203
T 316.268.0230
F 316.268.0205

Architecture · Engineering ·
Planning · Interior Design ·
Landscape Architecture

Professional Seal:



Project Title:

PROTOTYPE - NEW CONSTRUCTION - SHELL
Bakery Cafe#2406
1410 NE DOUGLAS ST
LEES SUMMIT, MO 64086



Consultant Copyright Placeholder

No.	Description	Date
A	Shell - Permit Set	7/5/2022

EXTERIOR
ELEVATIONS

Project Number:

22169

Drawn By:

EB

Issue Date:

07/05/2022

DFM:

DPM

Sheet Number:

22169

Drawn By:

EB

Issue Date:

07/05/2022

DFM:

DPM

DM

CPM

A200