

PLUMBING PLAN NOTES:

- P1 DO NOT INSTALL PLUMBING PIPING OVER ELECTRICAL PANELS OR EQUIPMENT.
- P7 REPLACE EXISTING SANITARY PIPING WITH NEW BELOW SLAB. RECONNECT NEW SANITARY PIPING INTO THE EXISTING SANITARY SYSTEM. FIELD VERIFY THAT THE EXISTING SANITARY SYSTEM'S LOCATION, SIZE, INVERT AND DIRECTION OF FLOW IS COMPATIBLE FOR MEETING THE NEW SANITARY PIPE CONNECTION AND REQUIREMENTS. MODIFY ROUGH-INS AS REQUIRED. NOTIFY THE ARCHITECT AS SOON AS POSSIBLE IF CONFLICTS ARE FOUND WITH NEW DESIGN AND THE EXISTING SYSTEM.
- P9 CONNECT NEW WATER PIPING INTO THE EXISTING WATER SYSTEM. FIELD VERIFY THAT THE EXISTING WATER SYSTEM'S LOCATION, SIZE, INVERT AND DIRECTION OF FLOW IS COMPATIBLE FOR MEETING THE NEW WATER PIPE CONNECTION AND REQUIREMENTS. MODIFY ROUGH-INS AS REQUIRED. NOTIFY THE ARCHITECT AS SOON AS POSSIBLE IF CONFLICTS ARE FOUND WITH NEW DESIGN AND THE EXISTING SYSTEM.
- P10 CONNECT NEW SANITARY PIPING INTO THE EXISTING SANITARY SYSTEM. FIELD VERIFY THAT THE EXISTING SANITARY SYSTEM'S LOCATION, SIZE, INVERT AND DIRECTION OF FLOW IS COMPATIBLE FOR MEETING THE NEW SANITARY PIPE CONNECTION AND REQUIREMENTS. MODIFY ROUGH-INS AS REQUIRED. NOTIFY THE ARCHITECT AS SOON AS POSSIBLE IF CONFLICTS ARE FOUND WITH NEW DESIGN AND THE EXISTING PIPING SYSTEM.
- P34 PROVIDE NEW PLUMBING FIXTURE AT SAME AS EXISTING FIXTURE LOCATION. CONNECT NEW FIXTURE TO EXISTING PLUMBING PIPING IN WALL OR CHASE AS REQUIRED. FIELD VERIFY THE EXISTING CONDITION. MODIFY ROUGH-IN AS REQUIRED. NOTIFY THE ARCHITECT AS SOON AS POSSIBLE IF CONFLICTS ARE FOUND WITH NEW DESIGN AND THE EXISTING PIPING SYSTEM.

Lee's Summit
High School

400 SE Blue Pkwy
Lee's Summit, MO 64063

owner:
Lee's Summit R-7 School District
123 Anystreet
Lee's Summit, MO 64086

architect:
Gould Evans
4200 Pennsylvania Avenue
Kansas City, MO 64111
816.931.6655 voice
www.goulddevans.com

structural engineer:
Bob D. Campbell & Company, Inc.
4338 Bellevue
Kansas City, MO 64111
816.331.4144

civil engineer:
Kaw Valley Engineering
14700 West 134th Terrace
Lenexa, KS 66215
913.485.0318

mechanical/electrical engineer:
Henderson Engineers
8345 Lenexa Drive, Suite 300
Lenexa, KS 66214
913.742.5000

CARL J. HOLDEN
LICENSE # PE-2020016283
166004111
MO. CORPORATE NO. E-560
EXPIRES 12/31/2021

REVISIONS		
NUMBER	DESCRIPTION	DATE
ASIS	ASIS	06/06/2021

RELEASED FOR
CONSTRUCTION
As Noted on Plans Review
Development Services Department
Lee's Summit, Missouri
07/28/2022

PROJECT NO: 0119-0100
DATE: February 19, 2021

Package 2

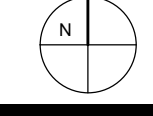
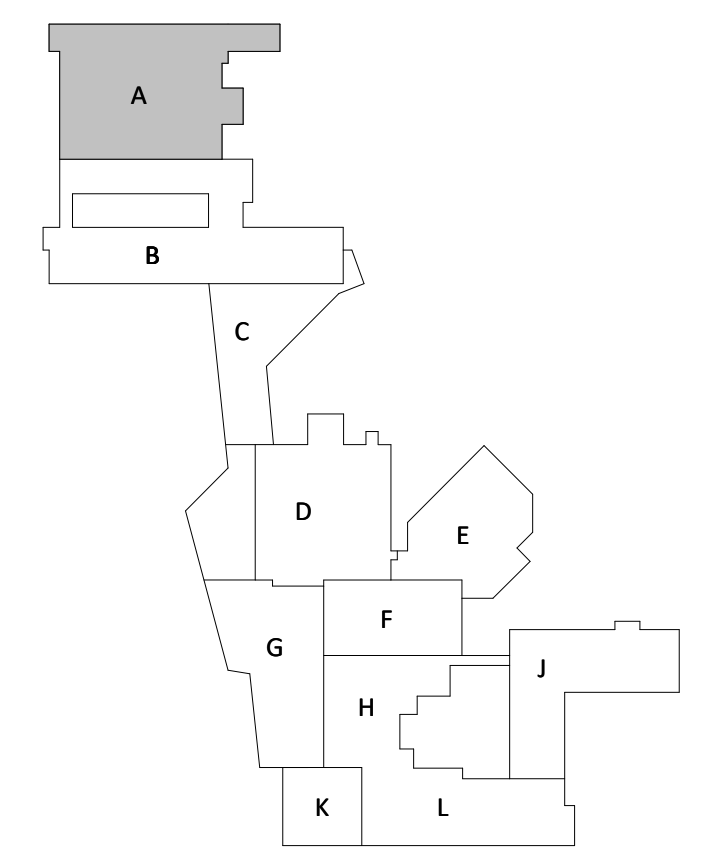
PLUMBING FLOOR
PLAN - ZONE A - LEVEL 1

1

P111

Construction
Conformance Set

Key Plan:



1 PLUMBING PLAN - ZONE A - LEVEL 1
1/8" = 1'-0"

Lee's Summit High School

400 SE Blue Pkwy
Lee's Summit, MO 64063

owner:
Lee's Summit R-7 School District
123 AnyStreet
Lee's Summit, MO 64086

architect:
Gould Evans
4200 Pennsylvania Avenue
Kansas City, MO 64111
816.931.6655 voice
www.gould-evans.com

structural engineer:
Bob D. Campbell & Company, Inc.
4338 Bellevue
Kansas City, MO 64111
816.331.4144

civil engineer:
Kaw Valley Engineering
14700 West 134th Terrace
Lenexa, KS 66215
913.485.0318

mechanical/electrical engineer:
Henderson Engineers
8345 Lenexa Drive, Suite 300
Lenexa, KS 66214
913.742.5000

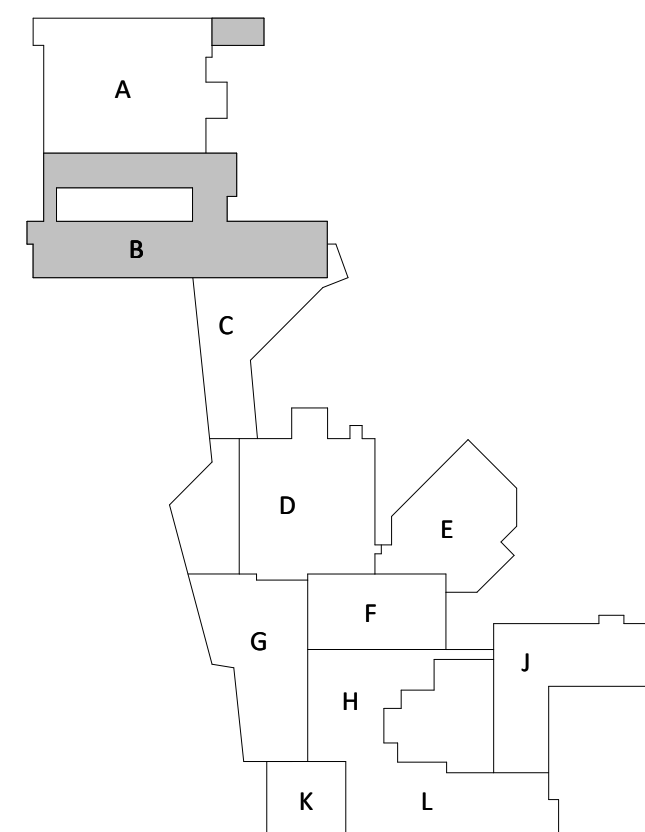
PLUMBING PLAN NOTES:

- P1 DO NOT INSTALL PLUMBING PIPING OVER ELECTRICAL PANELS OR EQUIPMENT.
- P7 REPLACE EXISTING SANITARY PIPING WITH NEW BELOW SLAB. RECONNECT NEW SANITARY PIPING INTO THE EXISTING SANITARY SYSTEM. FIELD VERIFY THAT THE EXISTING SANITARY SYSTEM'S LOCATION, SIZE, INVERT AND DIRECTION OF FLOW IS COMPATIBLE FOR MEETING THE NEW SANITARY PIPE CONNECTION AND REQUIREMENTS. MODIFY ROUGH-INS AS REQUIRED. NOTIFY THE ARCHITECT AS SOON AS POSSIBLE IF CONFLICTS ARE FOUND WITH NEW DESIGN AND THE EXISTING SYSTEM.
- P9 CONNECT NEW WATER PIPING INTO THE EXISTING WATER SYSTEM. FIELD VERIFY THAT THE EXISTING WATER SYSTEM'S LOCATION, SIZE, INVERT AND DIRECTION OF FLOW IS COMPATIBLE FOR MEETING THE NEW WATER PIPE CONNECTION AND REQUIREMENTS. MODIFY ROUGH-INS AS REQUIRED. NOTIFY THE ARCHITECT AS SOON AS POSSIBLE IF CONFLICTS ARE FOUND WITH NEW DESIGN AND THE EXISTING WATER SYSTEM.
- P10 CONNECT NEW SANITARY PIPING INTO THE EXISTING SANITARY SYSTEM. FIELD VERIFY THAT THE EXISTING SANITARY SYSTEM'S LOCATION, SIZE, INVERT AND DIRECTION OF FLOW IS COMPATIBLE FOR MEETING THE NEW SANITARY PIPE CONNECTION AND REQUIREMENTS. MODIFY ROUGH-INS AS REQUIRED. NOTIFY THE ARCHITECT AS SOON AS POSSIBLE IF CONFLICTS ARE FOUND WITH NEW DESIGN AND THE EXISTING SANITARY SYSTEM.
- P19 CONNECT NEW STORM PIPING INTO THE EXISTING STORM SYSTEM. FIELD VERIFY THAT THE EXISTING STORM SYSTEM'S LOCATION, SIZE, INVERT AND DIRECTION OF FLOW IS COMPATIBLE FOR MEETING THE NEW STORM PIPE CONNECTION AND REQUIREMENTS. MODIFY ROUGH-INS AS REQUIRED. NOTIFY THE ARCHITECT AS SOON AS POSSIBLE IF CONFLICTS ARE FOUND WITH NEW DESIGN AND THE EXISTING STORM SYSTEM.
- P34 PROVIDE NEW PLUMBING FIXTURE AT SAME AS EXISTING FIXTURE LOCATION. CONNECT NEW FIXTURE TO EXISTING PLUMBING PIPING IN WALL OR CHASE AS REQUIRED. FIELD VERIFY THE EXISTING CONDITION. MODIFY ROUGH-IN AS REQUIRED. NOTIFY THE ARCHITECT AS SOON AS POSSIBLE IF CONFLICTS ARE FOUND WITH NEW DESIGN AND THE EXISTING PIPING SYSTEM.
- P60 EXTEND AND CONNECT NEW HW, CW AND HWR LINES TO EXISTING LINES AROUND THIS AREA. FIELD VERIFY EXISTING CONDITION AND EXACT CONNECTION POINT. MODIFY ROUGH-INS AS REQUIRED. NOTIFY ARCHITECT AS SOON AS POSSIBLE IF CONFLICTS ARE FOUND WITH NEW DESIGN AND THE EXISTING WATER SYSTEM.
- P74 EXTEND AND CONNECT NEW 2" V TO EXISTING LINE ABOVE CEILING NEAR DEMOLISHED DRINKING FOUNTAIN LOCATION. FIELD VERIFY EXISTING CONDITION. MODIFY ROUGH-INS AS REQUIRED. NOTIFY ARCHITECT AS SOON AS POSSIBLE IF CONFLICTS ARE FOUND WITH NEW DESIGN AND THE EXISTING SYSTEM.

Starting point of new sanitary.
Plan new sanitary at 1% grade with pipe line laser.
Chased and demolded existing

1 PLUMBING PLAN - ZONE B - LEVEL 1
1/8" = 1'-0"

Key Plan:



RELEASED FOR
CONSTRUCTION
As Noted on Plans Review
Development Services Department
Lee's Summit, Missouri
07/28/2022

PROJECT NO: 0119-0100
DATE: February 19, 2021

Package 2

PLUMBING FLOOR
PLAN - ZONE B - LEVEL
1

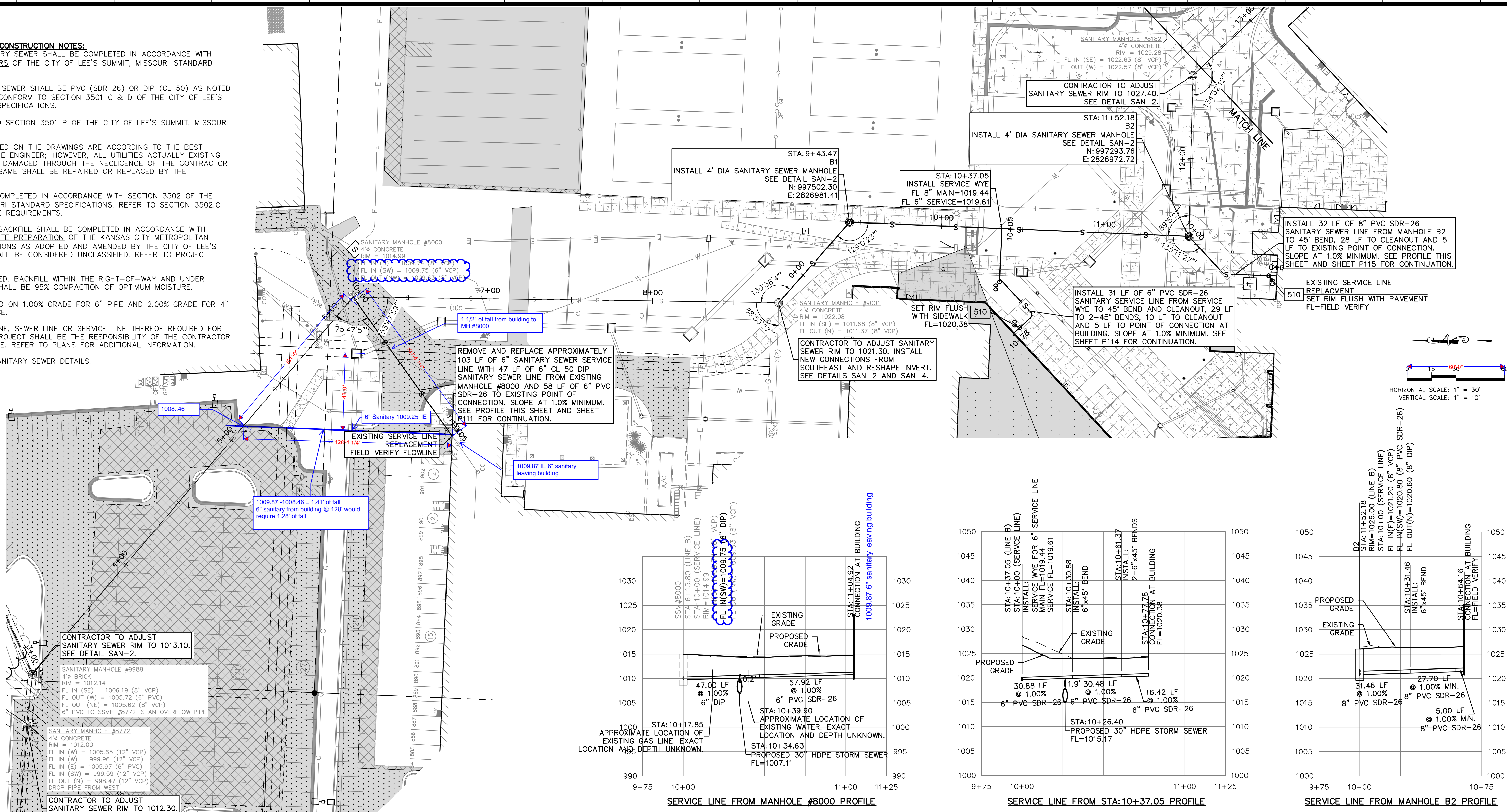
P112

Construction
Conformance Set

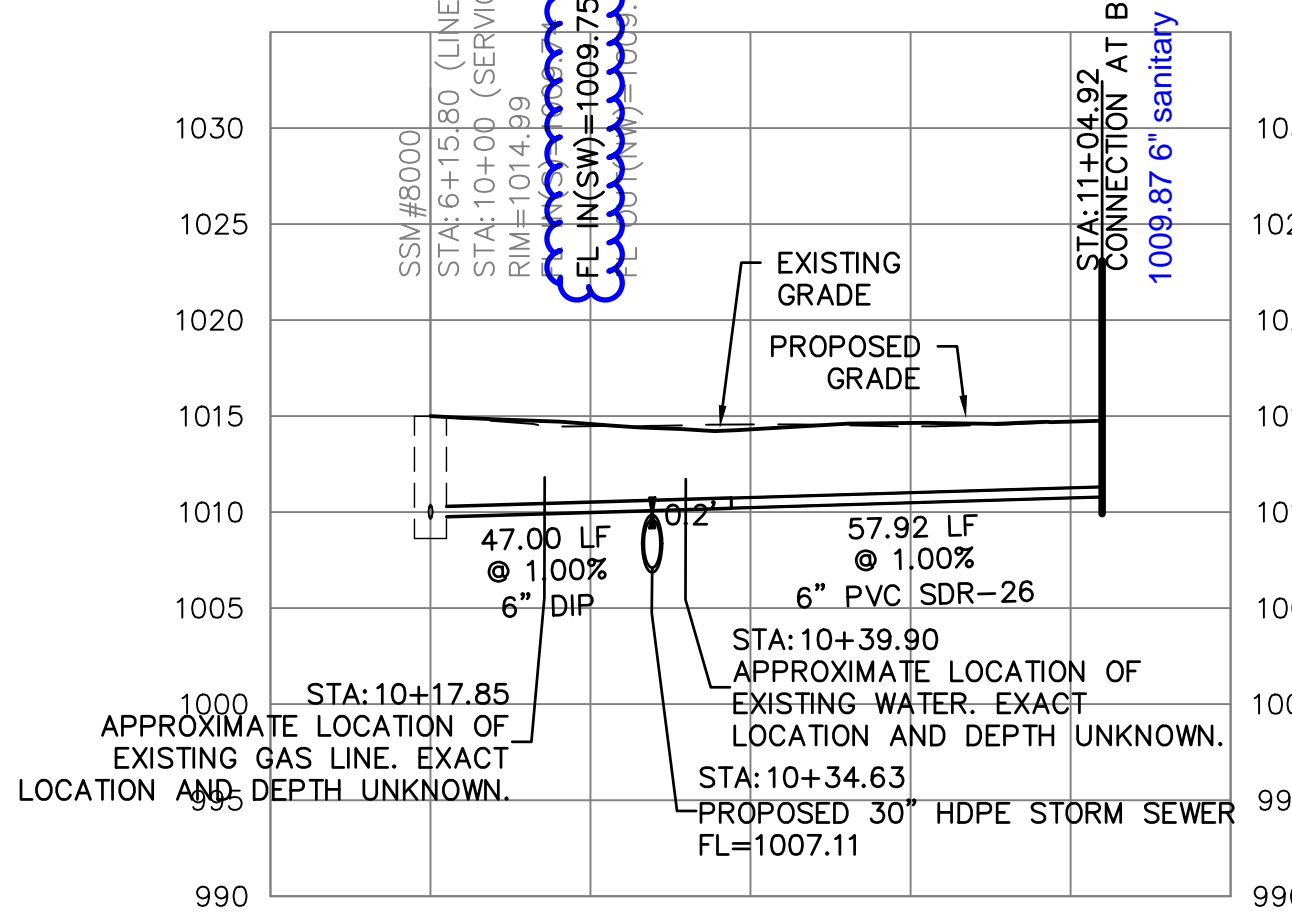
AS105

SANITARY SEWER MATERIALS AND CONSTRUCTION NOTES:

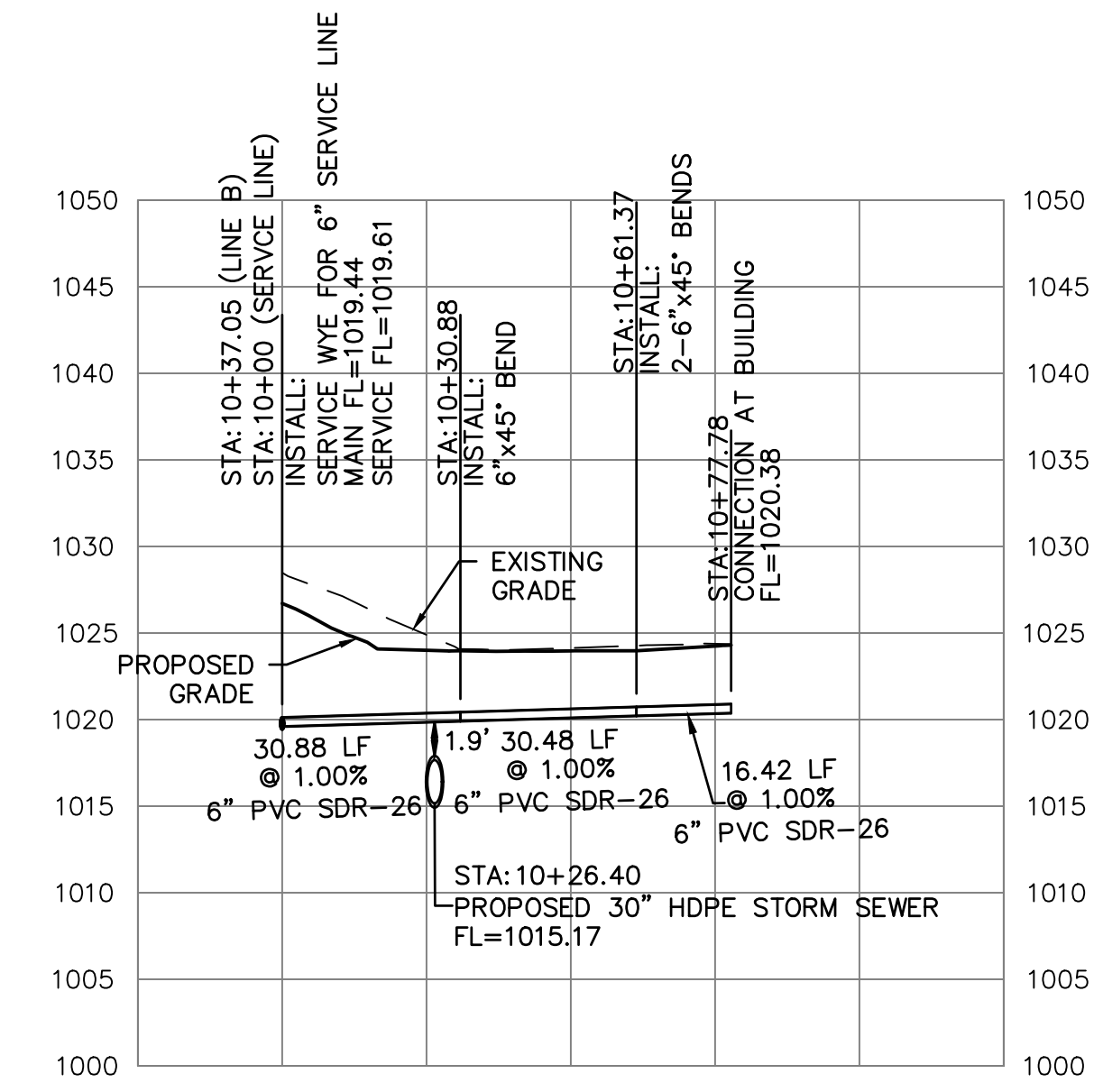
- ALL WORK RELATED TO SANITARY SEWER SHALL BE COMPLETED IN ACCORDANCE WITH SECTION 3500 SANITARY SEWERS OF THE CITY OF LEE'S SUMMIT, MISSOURI STANDARD SPECIFICATIONS.
- ALL PIPE USED FOR SANITARY SEWER SHALL BE PVC (SDR 26) OR DIP (CL 50) AS NOTED ON PLANS. MATERIAL SHALL CONFORM TO SECTION 3501 C & D OF THE CITY OF LEE'S SUMMIT, MISSOURI STANDARD SPECIFICATIONS.
- MANHOLES SHALL CONFORM TO SECTION 3501 P OF THE CITY OF LEE'S SUMMIT, MISSOURI STANDARD SPECIFICATIONS.
- ALL EXISTING UTILITIES INDICATED ON THE DRAWINGS ARE ACCORDING TO THE BEST INFORMATION AVAILABLE TO THE ENGINEER; HOWEVER, ALL UTILITIES ACTUALLY EXISTING MAY NOT BE SHOWN. UTILITIES DAMAGED THROUGH THE NEGLIGENCE OF THE CONTRACTOR TO OBTAIN THE LOCATION OF SAME SHALL BE REPAIRED OR REPLACED BY THE CONTRACTOR AT HIS EXPENSE.
- ALL INSTALLATION SHALL BE COMPLETED IN ACCORDANCE WITH SECTION 3502 OF THE CITY OF LEE'S SUMMIT, MISSOURI STANDARD SPECIFICATIONS. REFER TO SECTION 3502.C FOR TESTING AND ACCEPTANCE REQUIREMENTS.
- EXCAVATION, TRENCHING AND SITE PREPARATION OF THE KANSAS CITY METROPOLITAN CHAPTER OF APWA SPECIFICATIONS AS ADOPTED AND AMENDED BY THE CITY OF LEE'S SUMMIT. ALL EXCAVATIONS SHALL BE CONSIDERED UNCLASSIFIED. REFER TO PROJECT GEOTECHNICAL REPORT.
- ALL BACKFILL SHALL BE TAMPED. BACKFILL WITHIN THE RIGHT-OF-WAY AND UNDER PARKING AREAS AND SLABS SHALL BE 95% COMPACTION OF OPTIMUM MOISTURE.
- ALL STUB LINES SHALL BE LAID ON 1.00% GRADE FOR 6" PIPE AND 2.00% GRADE FOR 4" PIPE, UNLESS NOTED OTHERWISE.
- RELOCATION OF ANY WATER LINE, SEWER LINE OR SERVICE LINE THEREOF REQUIRED FOR THE CONSTRUCTION OF THIS PROJECT SHALL BE THE RESPONSIBILITY OF THE CONTRACTOR AND SHALL BE AT HIS EXPENSE. REFER TO PLANS FOR ADDITIONAL INFORMATION.
- REFER TO SHEET C560 FOR SANITARY SEWER DETAILS.



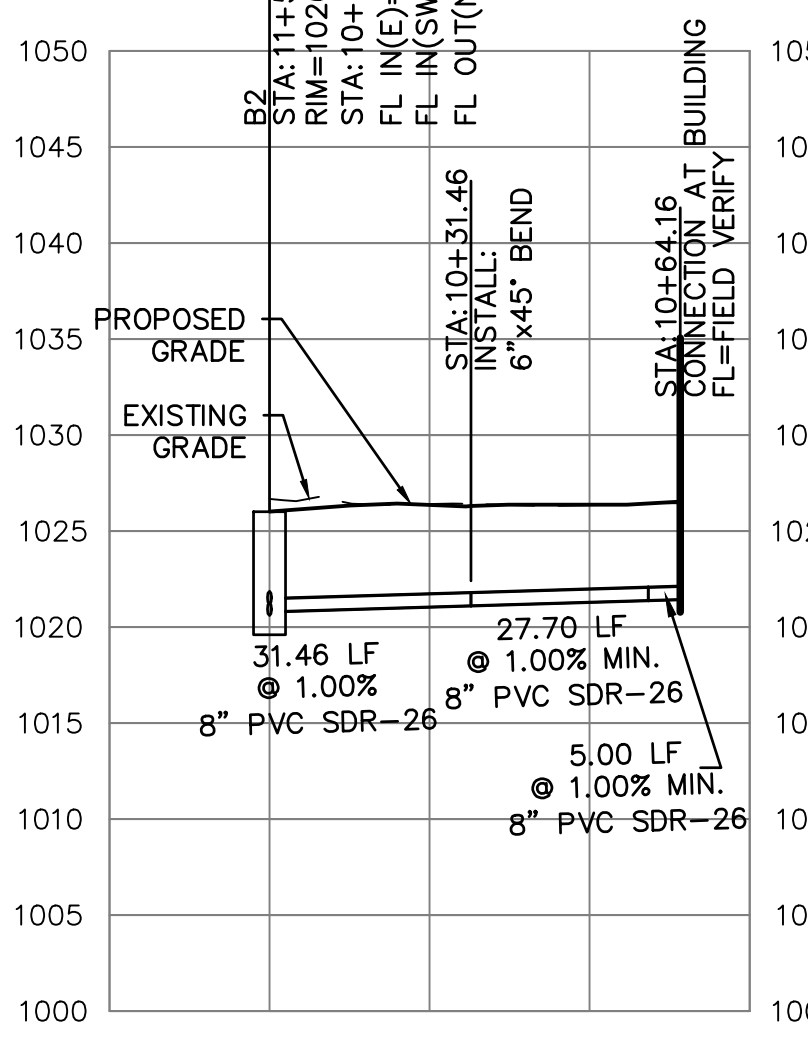
PRIVATE SANITARY SEWER LINE B PLAN



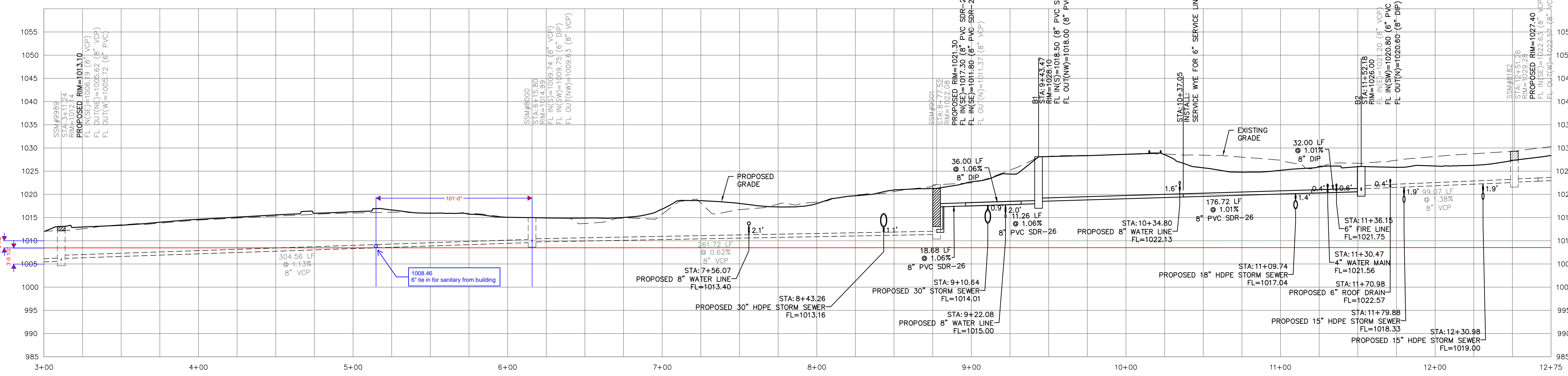
SERVICE LINE FROM MANHOLE #8000 PROFILE



SERVICE LINE FROM STA 10+37.05 PROFILE



SERVICE LINE FROM MANHOLE B2 PROFILE



PRIVATE SANITARY SEWER LINE B PROFILE

WARRANTY / DISCLAIMER

THE DESIGNS REPRESENTED IN THESE PLANS ARE IN ACCORDANCE WITH ESTABLISHED PRACTICES OF CIVIL ENGINEERING FOR THE DESIGN FUNCTIONS AND USES INTENDED BY THE OWNER AT THIS TIME. HOWEVER, NEITHER KAW VALLEY ENGINEERING, INC NOR ITS PERSONNEL CAN OR DO WARRANTY THESE DESIGNS OR PLANS AS CONSTRUCTED, EXCEPT IN THE SPECIFIC CASES WHERE KAW VALLEY ENGINEERING PERSONNEL INSPECT AND CONTROL THE PHYSICAL CONSTRUCTION ON A CONTEMPORARY BASIS AT THE SITE.

SAFETY NOTICE TO CONTRACTOR

IN ACCORDANCE WITH GENERALLY ACCEPTED CONSTRUCTION PRACTICES, THE CONTRACTOR WILL BE SOLELY AND COMPLETELY RESPONSIBLE FOR CONDITIONS OF THE JOB SITE, INCLUDING SAFETY OF ALL PERSONS AND PROPERTY DURING PERFORMANCE OF THE WORK. THIS REQUIREMENT WILL APPLY CONTINUOUSLY AND NOT BE LIMITED TO NORMAL WORKING HOURS.

CAUTION - NOTICE TO CONTRACTOR

THE CONTRACTOR IS SPECIFICALLY CAUTIONED THAT THE LOCATION AND/OR ELEVATION OF EXISTING UTILITIES AS SHOWN ON THESE PLANS IS BASED ON RECORDS OF THE VARIOUS UTILITY COMPANIES AND, WHERE POSSIBLE, MEASUREMENTS TAKEN IN THE FIELD. THE INFORMATION IS NOT TO BE RELIED ON AS BEING EXACT OR COMPLETE. THE CONTRACTOR MUST CALL THE APPROPRIATE UTILITY COMPANY AT LEAST 72 HOURS BEFORE ANY EXCAVATION TO REQUEST EXACT FIELD LOCATION OF UTILITIES. IT SHALL BE THE RESPONSIBILITY OF THE CONTRACTOR TO RELOCATE ALL EXISTING UTILITIES WHICH CONFLICT WITH PROPOSED IMPROVEMENTS SHOWN ON THE PLANS. THE CONTRACTOR SHALL EXPOSE EXISTING UTILITIES AT LOCATIONS OF POSSIBLE CONFLICTS PRIOR TO ANY CONSTRUCTION.



PROJ. NO. C20-0496 DSN: DDW
CFN: 0496SPF.DWG DWN: NUN
DAVID D. WOOD
ENGINEER
MO # 201037427
14700 WEST 114TH TERRACE
LENEXA, KANSAS 66215
PH. (913) 694-5150 FAX (913) 694-5977
www.kve.com
KAW VALLEY ENGINEERING
KAW VALLEY ENGINEERING, INC., IS AUTHORIZED TO OFFER
ENGINEERING SERVICES BY MISSOURI STATE CERTIFICATE OF
AUTHORITY # 000842. EXPIRES 12/31/21



kansas city • lawrence • new orleans
phoenix • san francisco

© 2020 Gould Evans, Inc.

Lee's Summit High School

400 SE Blue Pkwy
Lee's Summit, MO 64063

owner:
Lee's Summit R-7 School District
301 NE Tudor Road
Lee's Summit, MO 64086

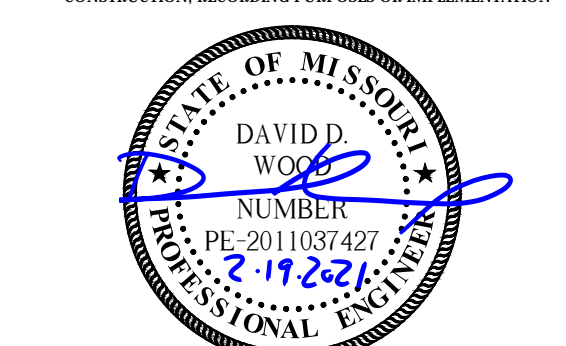
architect:
Gould Evans
4200 Pennsylvania Avenue
Kansas City, MO 64111
816.931.6655 voice
www.goulddevans.com

structural engineer:
Rob D. Campbell & Company, Inc.
4338 Bellevue
Kansas City, MO 64111
816.531.4144

civil engineer:
Kaw Valley Engineering
Brenderson Engineers
1801 Main St
Kansas City, MO 64108
816.663.5700

mechanical/electrical engineer:
Brenderson Engineers
1801 Main St
Kansas City, MO 64108
816.663.5700

UNDER A PROFESSIONAL SEAL WITH SIGNATURE AND DATE IS
AFFIRMED, THIS DOCUMENT IS PRELIMINARY AND IS NOT INTENDED FOR
CONSTRUCTION, RECORDING PURPOSES OR REPRESENTATION



Kaw Valley Engineering, Inc.
Missouri Certificate of Authority: 000842
David Wood
Date: 2/19/2021
License No. PE-2011037427

REVISIONS

Number	DESCRIPTION	DATE
1	RELEASED FOR CONSTRUCTION As Noted on Plans Review Development Services Department Lee's Summit, Missouri 07/28/2022	

PROJECT NO: 0119-0100
DATE: February 19, 2021

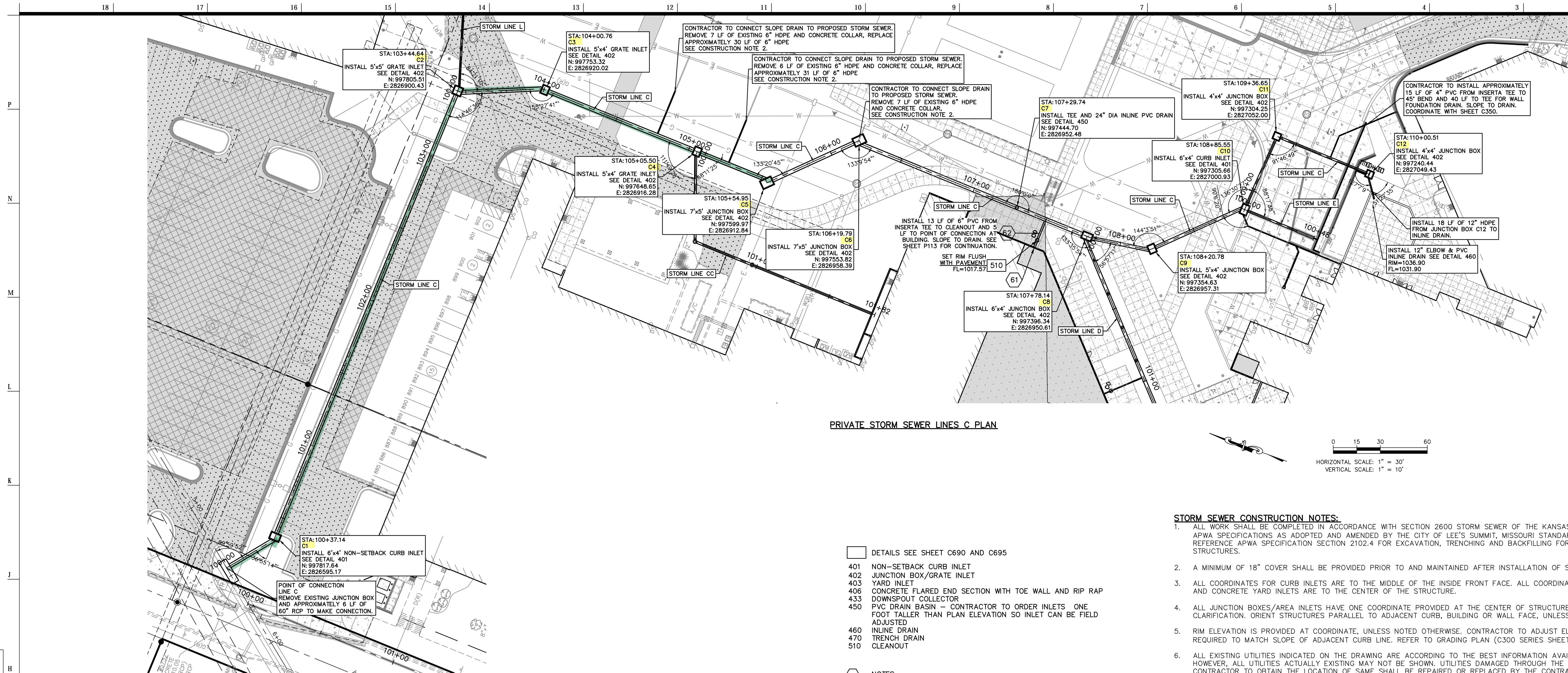
Package 2

PRIVATE SANITARY SEWER PLAN AND PROFILE

C560

Issued for Construction

IND3X P4GE



PRIVATE STORM SEWER LINES C PLAN

STORM SEWER CONSTRUCTION NOTES:

- ALL WORK SHALL BE COMPLETED IN ACCORDANCE WITH SECTION 2600 STORM SEWER OF THE KANSAS CITY METRO CHAPTER OF APWA SPECIFICATIONS AS ADOPTED AND AMENDED BY THE CITY OF LEE'S SUMMIT, MISSOURI STANDARD SPECIFICATIONS. REFERENCE APWA SPECIFICATION SECTION 2102.4 FOR EXCAVATION, TRENCHING AND BACKFILLING FOR PIPE AND STORM STRUCTURES.
- A MINIMUM OF 18" COVER SHALL BE PROVIDED PRIOR TO AND MAINTAINED AFTER INSTALLATION OF STORM SEWER.
- ALL COORDINATES FOR CURB INLETS ARE TO THE MIDDLE OF THE INSIDE FRONT FACE. ALL COORDINATES FOR PVC STRUCTURES AND CONCRETE YARD INLETS ARE TO THE CENTER OF THE STRUCTURE.
- ALL JUNCTION BOXES/AREA INLETS HAVE ONE COORDINATE PROVIDED AT THE CENTER OF STRUCTURE. SEE PLAN FOR CLARIFICATION. ORIENT STRUCTURES PARALLEL TO ADJACENT CURB, BUILDING OR WALL FACE, UNLESS NOTED OTHERWISE.
- RIM ELEVATION IS PROVIDED AT COORDINATE. UNLESS NOTED OTHERWISE, CONTRACTOR TO ADJUST ELEVATION OF RIM AS REQUIRED TO MATCH SLOPE OF ADJACENT CURB LINE. REFER TO GRADING PLAN (C300 SERIES SHEETS).
- ALL EXISTING UTILITIES INDICATED ON THE DRAWING ARE ACCORDING TO THE BEST INFORMATION AVAILABLE TO THE ENGINEER; HOWEVER, ALL UTILITIES ACTUALLY EXISTING MAY NOT BE SHOWN. UTILITIES DAMAGED THROUGH THE NEGLIGENCE OF THE CONTRACTOR TO OBTAIN THE LOCATION OF SAME SHALL BE REPAIRED OR REPLACED BY THE CONTRACTOR AT THEIR EXPENSE.
- ALL BACKFILL SHALL BE COMPACTED TO 95 PERCENT STANDARD DENSITY AT OPTIMUM MOISTURE.
- ALL EXCAVATION BENEATH THE STREETS AND PARKING LOTS FOR DRAINAGE PIPE LESS THAN 4'-0" IN DIAMETER SHALL BE BACKFILLED WITH AGGREGATE TO FOUR FEET (4') PAST BACK OF CURB IN ACCORDANCE WITH APWA SPECIFICATIONS SECTION 2102.4J.
- RELOCATION OF ANY WATER LINE, SEWER LINE OR SERVICE LINE THEREOF REQUIRED FOR THE CONSTRUCTION OF THIS PROJECT SHALL BE THE RESPONSIBILITY OF THE CONTRACTOR AND SHALL BE AT THEIR EXPENSE.
- IF PRECAST STORM STRUCTURES ARE TO BE USED ON THIS PROJECT, THE CONTRACTOR SHALL SUBMIT SHOP DRAWINGS AND HAVE THEM APPROVED BY THE ENGINEER PRIOR TO FABRICATION OF THE STRUCTURES. FAILURE TO DO SO SHALL BE CAUSE FOR REJECTION.
- ALL HDPE PIPE JOINTS SHALL BE WATER TIGHT.

DETAILS SEE SHEET C690 AND C695

- 401 NON-SETBACK CURB INLET
- 402 JUNCTION BOX/GRATE INLET
- 403 YARD INLET
- 406 CONCRETE FLARED END SECTION WITH TOE WALL AND RIP RAP
- 433 DOWNSPOUT COLLECTOR
- 450 PVC DRAIN BASIN - CONTRACTOR TO ORDER INLETS. ONE FOOT TALLER THAN PLAN ELEVATION SO INLET CAN BE FIELD ADJUSTED
- 460 INLINE DRAIN
- 470 TRENCH DRAIN
- 510 CLEANOUT

NOTES

- STORM SEWER POINT OF CONNECTION AT BUILDING REFER TO MEP PLANS
- PVC SDR-26 ROOF DRAIN. IF DRAIN IS LESS THAN 2' USE SCHEDULE 40 PVC FOR THE ENTIRE RUN. SLOPE TO DRAIN (1% MINIMUM FOR 6" AND LARGER ROOF DRAINS, 2% MINIMUM FOR 4" ROOF DRAINS)
- PVC STORM LINE AND TEE FOR FOUNDATION DRAIN. COORDINATE WITH ARCHITECTURAL PLANS FOR SIZE.

SAFETY NOTICE TO CONTRACTOR

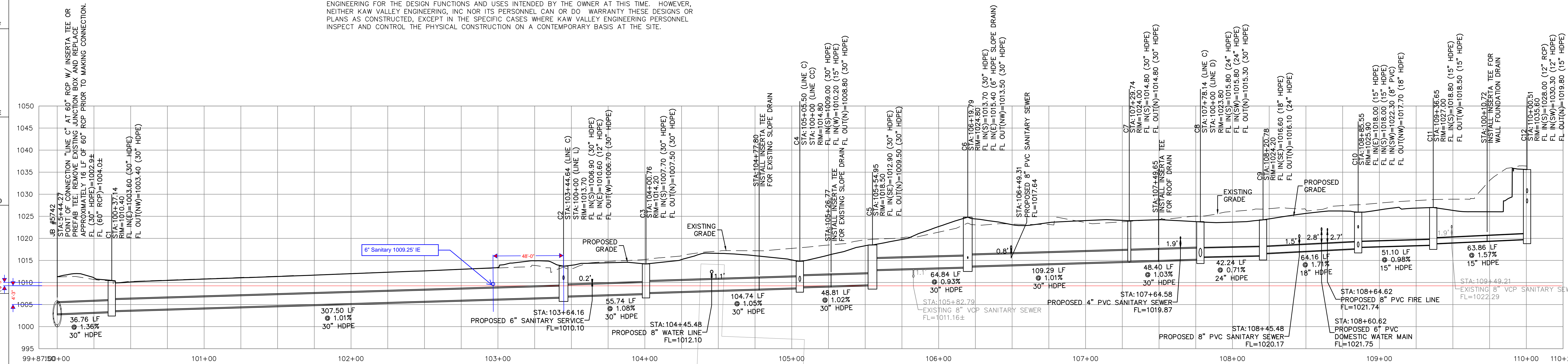
IN ACCORDANCE WITH GENERALLY ACCEPTED CONSTRUCTION PRACTICES, THE CONTRACTOR WILL BE SOLELY AND COMPLETELY RESPONSIBLE FOR THE CONDITIONS OF THE JOB SITE, INCLUDING SAFETY OF ALL PERSONS AND PROPERTY DURING PERFORMANCE OF THE WORK. THIS REQUIREMENT WILL APPLY CONTINUOUSLY AND NOT BE LIMITED TO NORMAL WORKING HOURS.

CAUTION - NOTICE TO CONTRACTOR

THE CONTRACTOR IS SPECIFICALLY CAUTIONED THAT THE LOCATION AND/OR ELEVATION OF EXISTING UTILITIES AS SHOWN ON THESE PLANS IS BASED ON RECORDS OF THE VARIOUS UTILITY COMPANIES AND, WHERE POSSIBLE, MEASUREMENTS TAKEN IN THE FIELD. THE INFORMATION IS NOT TO BE RELIED ON AS BEING EXACT OR COMPLETE. THE CONTRACTOR MUST CALL THE APPROPRIATE UTILITY COMPANY AT LEAST 72 HOURS BEFORE ANY EXCAVATION TO REQUEST EXACT FIELD LOCATION OF UTILITIES. IT SHALL BE THE RESPONSIBILITY OF THE CONTRACTOR TO RELOCATE ALL EXISTING UTILITIES WHICH CONFLICT WITH PROPOSED IMPROVEMENTS SHOWN ON THE PLANS. THE CONTRACTOR SHALL EXPOSE EXISTING UTILITIES AT LOCATIONS OF POSSIBLE CONFLICTS PRIOR TO ANY CONSTRUCTION.

WARRANTY / DISCLAIMER

THE DESIGNS REPRESENTED IN THESE PLANS ARE IN ACCORDANCE WITH ESTABLISHED PRACTICES OF CIVIL ENGINEERING FOR THE DESIGN FUNCTIONS AND USES INTENDED BY THE OWNER AT THIS TIME. HOWEVER, NEITHER KAW VALLEY ENGINEERING, INC NOR ITS PERSONNEL CAN OR DO WARRANT THESE DESIGNS OR PLANS AS CONSTRUCTED, EXCEPT IN THE SPECIFIC CASES WHERE KAW VALLEY ENGINEERING PERSONNEL INSPECT AND CONTROL THE PHYSICAL CONSTRUCTION ON A CONTEMPORARY BASIS AT THE SITE.



PRIVATE STORM SEWER LINE C PROFILE



PROJ. NO. C20-0496 DSN: DOW DAVID D. WOOD
CFN: 04960PP.DWG DWN: NUN ENGINEER
MO # 201037427
14700 WEST 114TH TERRACE
LENEXA, KANSAS 66215
PH. (913) 694-5150 | FAX (913) 694-5977
info@kve.com www.kve.com

KAW VALLEY ENGINEERING, INC. IS AUTHORIZED TO OFFER
ENGINEERING SERVICES BY MISSOURI STATE CERTIFICATE OF
AUTHORITY # 000842. EXPIRES 12/31/21

Lee's Summit
High School

400 SE Blue Pkwy
Lee's Summit, MO 64063

owner:
Lee's Summit R-7 School District
301 NE Tudor Road
Lee's Summit, MO 64086

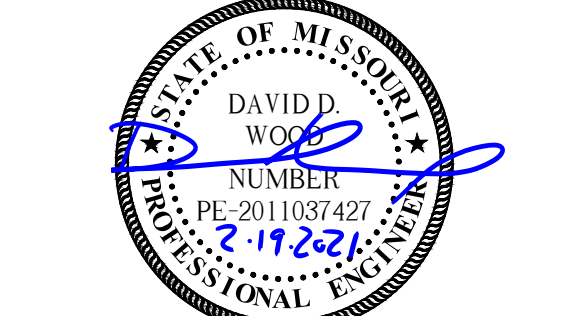
architect:
Gould Evans
4200 Pennsylvania Avenue
Kansas City, MO 64111
816.931.6655 voice
www.goulddevans.com

structural engineer:
Bob D. Campbell & Company, Inc.
4338 Bellevue
Kansas City, MO 64111
816.531.4144

civil engineer:
Kaw Valley Engineering
14700 West 114th Terrace
Lenexa, KS 66215
913.485.0318

mechanical/electrical engineer:
Brenderson Engineers
1801 Main St
Kansas City, MO 64108
816.663.5700

UNDER A PROFESSIONAL SEAL WITH SIGNATURE AND DATE I
AFFIRM, THIS DOCUMENT IS PRELIMINARY AND IS NOT INTENDED FOR
CONSTRUCTION, RECORDING PURPOSES OR REPRESENTATION



Kaw Valley Engineering, Inc.
Missouri Certificate of Authority: 000842
David Wood
Engineer Date: 2/19/2021
License No. PE-201037427

REVISIONS

Number DESCRIPTION DATE

RELEASED FOR
CONSTRUCTION
As Noted on Plans Review
Development Services Department
Lee's Summit, Missouri
07/26/2022

PROJECT NO: 0119-0100
DATE: February 19, 2021

Package 2

PRIVATE STORM SEWER
PLAN AND PROFILE

C620

Issued for Construction

IND3X P4GE