



D A Group, Incorporated
architecture + interiors

July 25, 2022

Hector Soto Jr.
Planning Division Manager
City of Lee's Summit
220 SE Green Street
Lee's Summit, Missouri 64063

Re: Response to City Planning Comments.07.25.2022

Dear Hector,

Please find our architectural responses to your comments are as follows:

1. LIGHTING. Please clarify the type of light fixture to be used with the gooseneck wall brackets. Is the floodlight fixture intended to be used on these brackets? If so, floodlight fixtures are allowed as accent lighting provided they are directionally shielded to eliminate glare to motorists and pedestrians.

Response: All wall mounted signage panels to be illuminated with a continuous down directed LED strip fixture (cut sheet attached) Logo signage to be illuminated LED letter type

2. ELEVATIONS A south and east building elevation was provided, but no west building elevation. Are no improvements of any kind proposed for the west elevation, including painting? If none, then no west elevation is required. If improvements, including painting, of the west elevation is proposed, then a west elevation shall be provided.

Response: No work including painting is proposed on the west wall.

Label the proposed colors for all exterior materials on the south, east and west elevations.

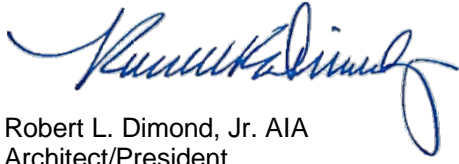
Response: Colors have been added to the elevations with color swatches. Refer to color rendering and signage elevations for locations.

The south and east elevations call out the use of wood to infill window openings. Wood is not approved material for commercial development. Wood alternatives such as wood-look cement fiberboard or other cementitious material is allowed. A wood composite could also be used, but not real wood.

Response: All exposed wood shown on the elevations will be composite wood materials and painted.

Please contact me with any questions regarding these responses

Sincerely,

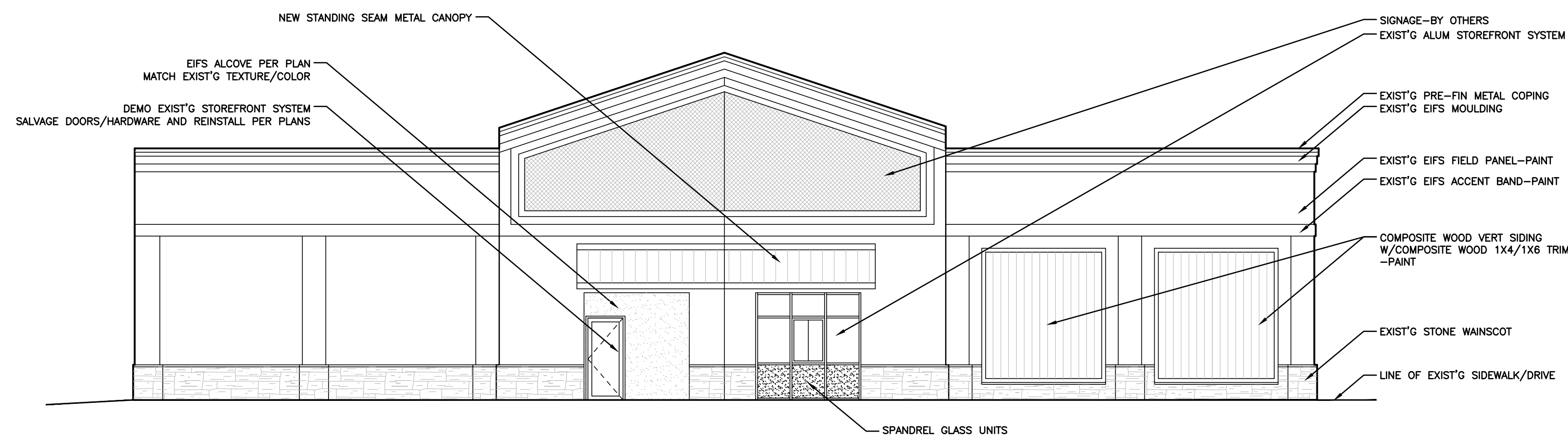
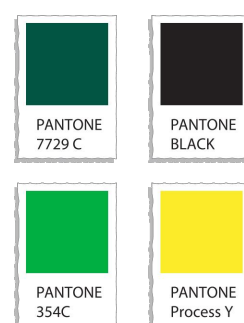
A handwritten signature in blue ink, appearing to read "Robert L. Dimond, Jr.", with a stylized, flowing script.

Robert L. Dimond, Jr. AIA
Architect/President

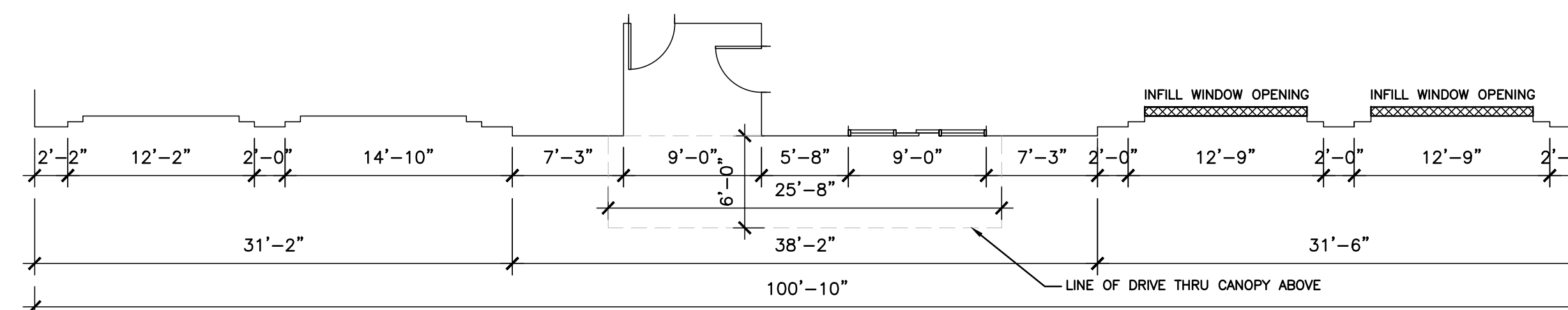
RLD/rld

Enclosures

Z:\Projects\DA0835\Review Commnets v2\L-072522022-hs.doc



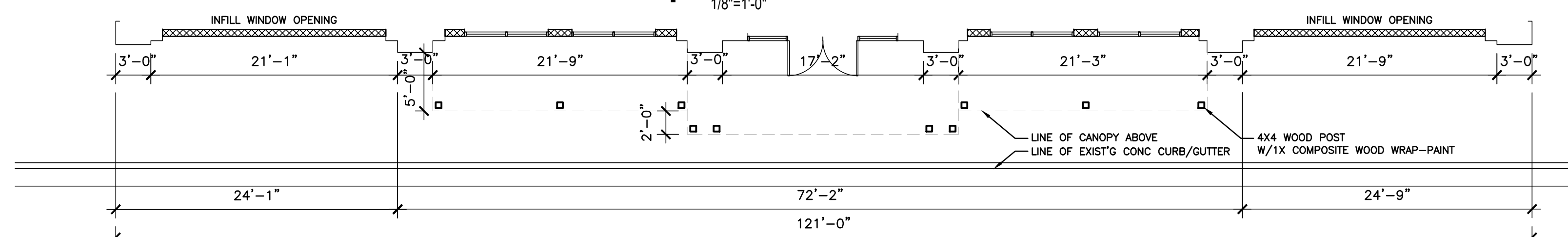
2 SOUTH ELEVATION



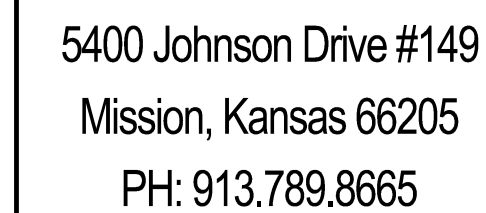
2.1 PLAN



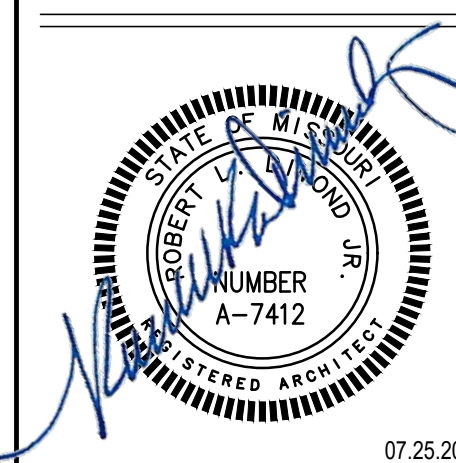
1 EAST ELEVATION



1.1 PLAN





MACADOODLES
INTERIOR TENANT FINISH
1499 MARKET STREET
LEE'S SUMMIT, MISSOURI



PROJECT NO. DA0835
DRAWN BY: D A STAFF

ISSUE DATE: 07/25/2022
BID SET ISSUE DATE: --/--/----
PERMIT SET ISSU IF DATE: --/--/----

REV.  --/--/---
REV.  --/--/---
REV.  --/--/---

© D. A. GROUP INCORPORATED 2022

THIS DOCUMENT IS PREPARED FOR USE ON A SPECIFIC PROJECT AND LOCATION AND IS COPYRIGHTED WORK BY D. A. GROUP, INCORPORATED.

THIS DOCUMENT MAY NOT BE REPRODUCED IN ANY MANNER WITHOUT THE WRITTEN PERMISSION OF D. A. GROUP, INCORPORATED.

SHEET NO.
A200

PDP APPLICATION - NOT FOR CONSTRUCTION

EAST SIDE (FRONT)



E-1: Macadoodle header
E-2: FINE WINES: 24' max width
E-3: LARGE LIFESTYLE IMAGE: 233" wide x 109" tall

E-6: BEER•SPIRITS: 24' max width
E-7: MAC: 36" wide
E-8: PROMISE MESSAGE: 64" wide
E-9: LIFESTYLE IMAGE: 133" wide x 109" tall



SOUTH SIDE (DRIVE THRU)



S-1: Macadoodle header
S-2: BEER • FINE WINES • SPIRITS: 25' max width
S-3: LIFESTYLE SIGNAGE: 133" wide x 109" tall
S-4: LIFESTYLE SIGNAGE: 133" wide x 109" tall

S-5: LOYALTY: 64" wide x XX" tall
(total width is 86")
S-6: Monitor 1: 36" wide x 24.5" tall
S-7: Monitor 2: 36" wide x 24.5" tall
S-8: 64" wide: (total width is 86")

S-9: DRIVE THRU: 25' wide max
S-10: LIFESTYLE SIGNAGE: 133" wide x 109" tall
S-11: LIFESTYLE SIGNAGE: 133" wide x 109" tall





LED LINEAR LIGHT

FEATURES:

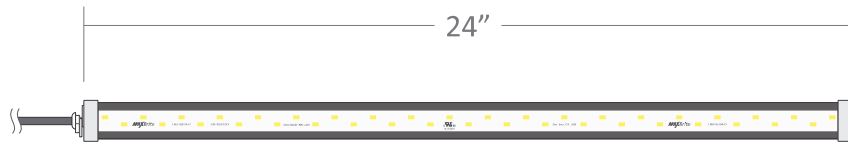
- Highly Effective Projection Lighting
- Ultra Bright 5730 SMD LED Technology
- Designed for Indoor/Outdoor Use
- Rated IP68 for Damp and Wet Locations
- Heavy Duty Glass Cover Protection
- **3 Year Manufacturer Warranty**



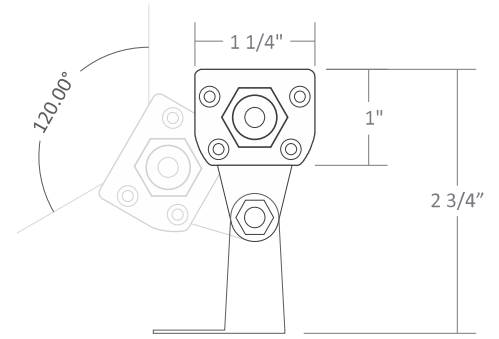
Part Number	CCT (Kelvin)	LED Type / PCS	Power Consumption	Luminous Flux	Voltage	Viewing Angle	Weight	Dimension
LNW-50K24-12	5000K	SMD 5730 / 36 LEDs	18 WATT	2,160lm	12V DC	120°	1.98 lbs.	23" x 1" x 1-1/4"
LNW-50K36-12	5000K	SMD 5730 / 48 LEDs	24 WATT	2,880lm	12V DC	120°	2.76 lbs.	36" x 1" x 1-1/4"
LNW-50K48-12	5000K	SMD 5730 / 72 LEDs	36 WATT	4,320lm	12V DC	120°	3.53 lbs.	48" x 1" x 1-1/4"
LNW-50K72-12	5000K	SMD 5730 / 96 LEDs	48 WATT	5,760lm	12V DC	120°	5.08 lbs.	72" x 1" x 1-1/4"



SYSTEM DIMENSIONS



LNW-50K24-12



180° Stainless Steel
Adjustment Bracket



LNW-50K36-12

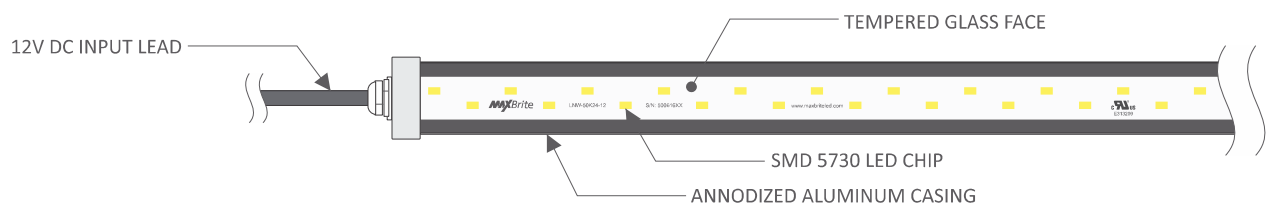


LNW-50K48-12



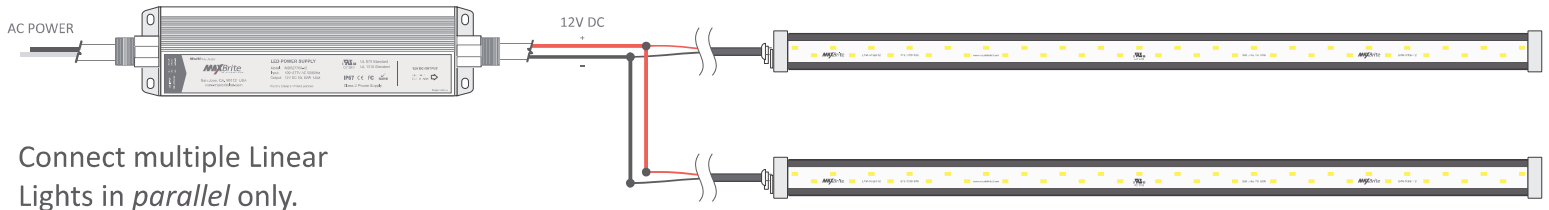
LNW-50K72-12

SYSTEM DETAILS





WIRING DIAGRAM



POWER SUPPLY LOADING*

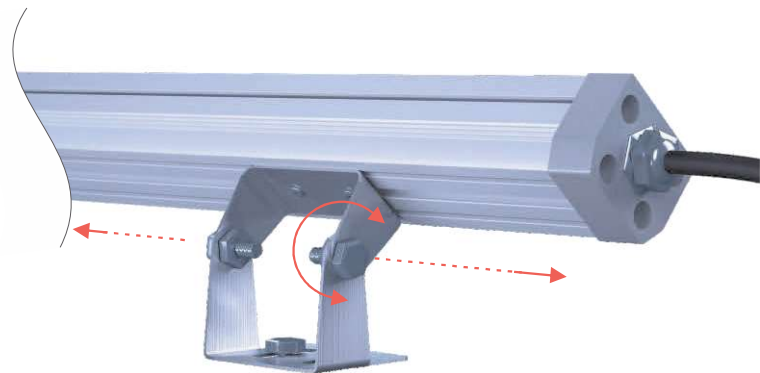
Output (W)		30W	40W	45W	60W
Model Specific Info	24" (18W)	1	1	2	2
	36" (24W)	1	1	1	2
	48" (36W)	0	0	1	1
	72" (48W)	0	0	0	1
Extension Wire Thickness		18AWG	16AWG	14AWG	12AWG
Extension Wire Length		30ft	50ft	75ft	100ft

*Recommended power supply loading 75% of rated output per NEC to ensure long lifespan.

INSTALLATION



Use supplied mounting bracket to secure Linear Light fixture.



Mounting bracket can slide horizontally, and rotate to desired angle.