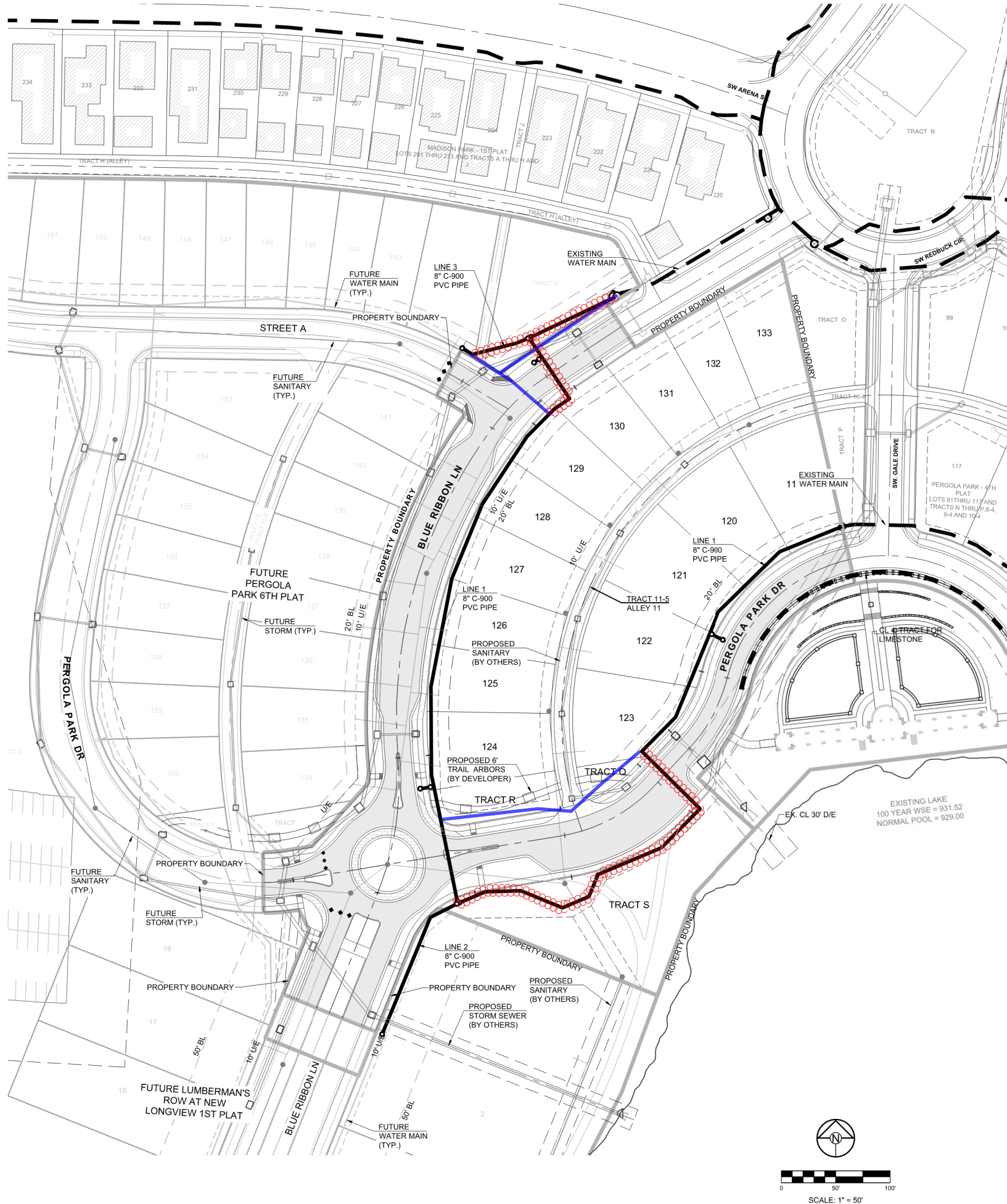


I:\PROJECTS\2020\20-1893.0 DWG Plans\20-189-WAT-GEN.dwg, 3/30/2022 11:16:04 AM, 1:1

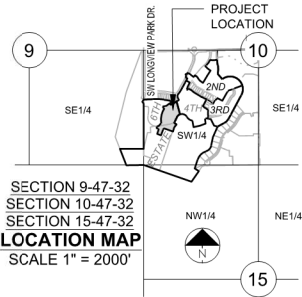
GENERAL NOTES:

1. ALL CONSTRUCTION TO FOLLOW THE CITY OF LEE'S SUMMIT DESIGN AND CONSTRUCTION MANUAL AS ADOPTED BY ORDINANCE 5813.
2. THE CONTRACTOR IS RESPONSIBLE FOR VERIFYING ALL EXISTING UTILITY LOCATIONS PRIOR TO EXCAVATIONS.
3. FOR ALL WATER LINES THE MAXIMUM DEPTH OF COVER IS SEVEN (7) FEET.



Alignment

Delete



MISSOURI GEOGRAPHIC REFERENCE SYSTEM BENCH MARK:

BM JA-148, IS A STAMPED KC METRO DISK SET IN CONCRETE LOCATED 2 MILES WEST OF THE INTERSECTION OF HIGHWAY 50 AND 3RD ST. IT IS 44 FT NORTH OF THE CENTER OF 3RD ST. AND 102.5 FT WEST OF THE CENTER OF THE EXIT FROM THE ADJACENT PARKING LOT.

ELEV. 935.18

PROJECT BENCHMARK:

CHISELED "SQUARE" ON STORM CURB INLET AT NORTHWEST INTERSECTION OF SW. TOWER PARK DRIVE AND SW. LONGVIEW BOULEVARD.

NORTHING: 998893.4'48
EASTING: 2803318.5413
ELEV. 1004.09

PREPARED BY:



SCHLAGEL & ASSOCIATES, P.A.

PERGOLA PARK 5TH PLAT
WATER MAIN PLANS

- LEE'S SUMMIT, MISSOURI

REVISION DATE	DESCRIPTION
2-4-22	CITY COMMENTS
3-23-22	CITY COMMENTS
11-17-2021	DATE PREPARED
20-189	PROJ. NUMBER
GENERAL LAYOUT	
SHEET	
2	