

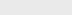
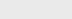
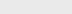



WATER MAIN PLANS
FOR
PERGOLA PARK 5TH PLAT
IN THE CITY OF LEE'S SUMMIT
JACKSON COUNTY, MISSOURI

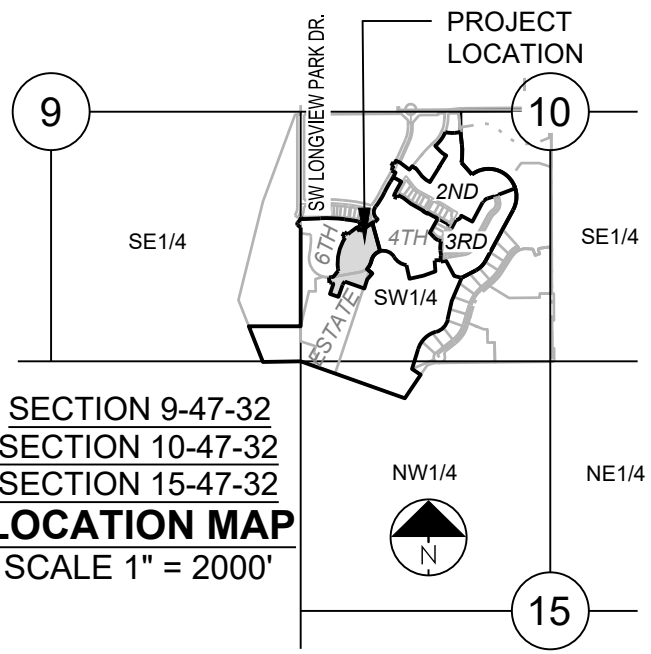
Sheet Number	Sheet Title
1	COVER SHEET
2	GENERAL LAYOUT
3	LINE 1 PLAN & PROFILE
4	LINES 2 & 3 PLAN & PROFILE
5	DETAIL SHEET

LEGEND:

- | | |
|------------|---------------------------------------|
| AE | - ACCESS EASEMENT |
| BC | - BACK OF CURB |
| B/B | - BACK TO BACK |
| BM | - BENCHMARK |
| BL or B.L. | - BUILDING LINE |
| CO | - CLEANOUT |
| TJB | - TELEPHONE JUNCTION BOX |
| C&G | - CURB AND GUTTER |
| D/E | - DRAINAGE EASEMENT |
| E/E | - ELECTRICAL EASEMENT |
| EL | - ELEVATION |
| FL | - FLOW LINE |
| G/E | - GAS LINE EASEMENT |
| HDPE | - HIGH-DENSITY POLYETHYLENE |
| L/E | - LANDSCAPE EASEMENT |
| MSFE | - MINIMUM SERVICEABLE FLOOR ELEVATION |
| PVC | - POLYVINYL CHLORIDE |
| P/L | - PROPERTY LINE |
| PUB/E | - PUBLIC EASEMENT |
| RCP | - REINFORCED CONCRETE PIPE |
| ROW or R/W | - RIGHT-OF-WAY |
| S/E | - SANITARY SEWER EASEMENT |
| SL | - SERVICE LINE |
| SW | - SIDEWALK |
| TE | - TOP ELEVATION |
| U/E | - UTILITY EASEMENT |
| WSE | - WATER SURFACE ELEVATION |
| W/E | - WATERLINE EASEMENT |

	ASPHALT PAVEMENT - EXISTING
	ASPHALT PAVEMENT - PROPOSED
	CONCRETE PAVEMENT - EXISTING
	ASPHALT PAVEMENT - EXISTING
	CONCRETE SIDEWALK - EXISTING
	CONCRETE SIDEWALK - PROPOSED

- CURB & GUTTER
- CURB & GUTTER - EXISTING
- TREELINE
- EXISTING LOT AND R/W LINES
- EXISTING PLAT LINES
- PIL PROPERTY LINES
- ROW RIGHT-OF-WAY
- SANITARY SEWER MAIN
- SANITARY SEWER MAIN - EXIST.
- STO STORM SEWER
- STORM SEWER - EXISTING
- CATV_x CABLE TV - EXISTING
- Fiber FIBER OPTIC CABLE - EXISTING
- T_x TELEPHONE LINE - EXIST.
- E_x ELECTRIC LINE - EXISTING
- OHP_x OVERHEAD POWER LINE - EXIST.
- UGE_x UNDERGROUND ELECTRIC - EX.
- G_x GAS LINE - EXISTING
- W_x WATERLINE - EXISTING
- LIGHT - EXISTING
- EXISTING MANHOLE
- CLEANOUT
- EXISTING SANITARY MANHOLE
- PROPOSED SANITARY MANHOLE
- AI₁ EXISTING AREA INLET
- CI₁ EXISTING CURB INLET
- G₁ EXISTING GATE INLET
- JB₁ EXISTING JUNCTION BOX
- STO EXISTING STORM MANHOLE

**UTILITY CONTACTS:**MISSOURI DEPARTMENT OF
TRANSPORTATION (MODOT)

Steve Holloway
600 NE Colbern Road
Lee's Summit, MO 64086
(816) 607-2186

MISSOURI GAS ENERGY (MGE)

Brent Jones
3025 SE Clover Drive
Lee's Summit, MO 64082
(816) 399-9633
brent.jones@spireenergy.com

EVERGY

Ron DeJarnette
1300 SE Hamblin Road
Lee's Summit, MO 64081
Office: (816) 347-4316
Cell: (816) 810-5234
ron.dejarnette@evergy.com

CITY OF LEES SUMMIT PUBLIC WORKS

220 SE Green Street
Lee's Summit, MO 64063
(816) 969-1800

AT&T

Mark Manion or Marty Loper
500 E. 8th Street, Room 370
Kansas City, MO 64106
(816) 275-2341 or (816) 275-1550

COMCAST CABLE

John Meadows
4700 Little Blue Parkway
Independence, MO 64057
(816) 795-2257

CITY OF LEE'S SUMMIT WATER UTILITIES

Mark Schaufler
1200 SE Hamblen Road
Lee's Summit, MO 64081
(816) 969-1900

SUMMARY OF QUANTITIES

	ITEM	QUANTITY	UNITS
1	CONNECT TO EXISTING WATER LINE	2	EA
2	FIRE HYDRANT ASSEMBLY	3	EA
3	END OF LINE TEMPORARY FIRE HYDRANT ASSEMBLY	2	EA
4	REMOVE TEMPORARY FIRE HYDRANT ASSEMBLY	2	EA
5	8" C-900 PVC	1,357	LF
6	8" GATE VALVE	6	EA
7	8" X 8" TEE	2	EA
8	8" 11.25" PVC BEND	7	EA
9	8" 22.5" PVC BEND	3	EA
10	8" 45" PVC BEND	2	EA
11	8" 45" VERTICAL PVC BEND	8	EA
12	8" 90" PVC BEND	2	EA

MISSOURI GEOGRAPHIC REFERENCE SYSTEM
BENCH MARK:

BM JA-148, IS A STAMPED KC METRO DISK SET IN CONCRETE LOCATED 2 MILES WEST OF THE INTERSECTION OF HIGHWAY 50 AND 3RD ST. IT IS 44 FT NORTH OF THE CENTER OF 3RD ST. AND 102.5 FT WEST OF THE CENTER OF THE EXIT FROM THE ADJACENT PARKING LOT.

ELEV. 935.18

PROJECT BENCHMARK:

CHISELED "SQUARE" ON STORM CURB INLET AT NORTHWEST
INTERSECTION OF SW. TOWER PARK DRIVE AND SW. LONGVIEW
BOULEVARD.

NORTHING: 998893.4148
EASTING: 2803318.5413
ELEV. 1004.09

PREPARED BY:



SCHLAGEL & ASSOCIATES, P.A.

PERGOLA PARK 5TH PLAT

WATER MAIN PLANS

- LEE'S SUMMIT, MISSOURI

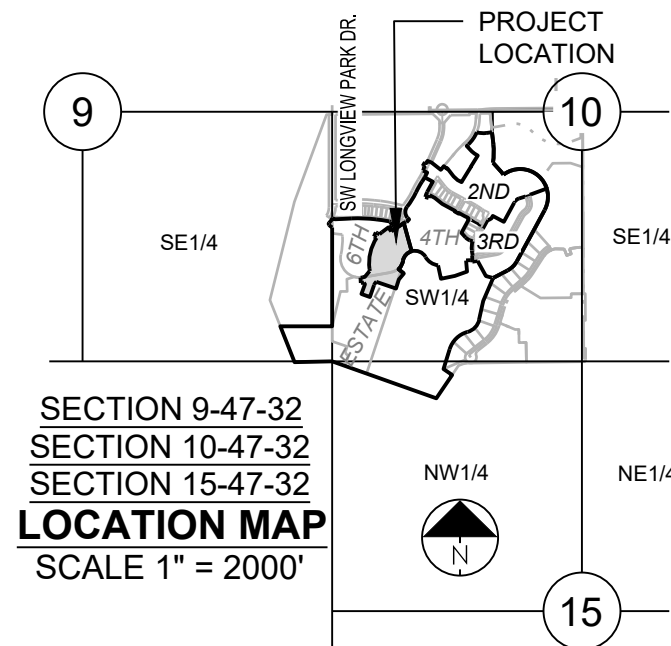
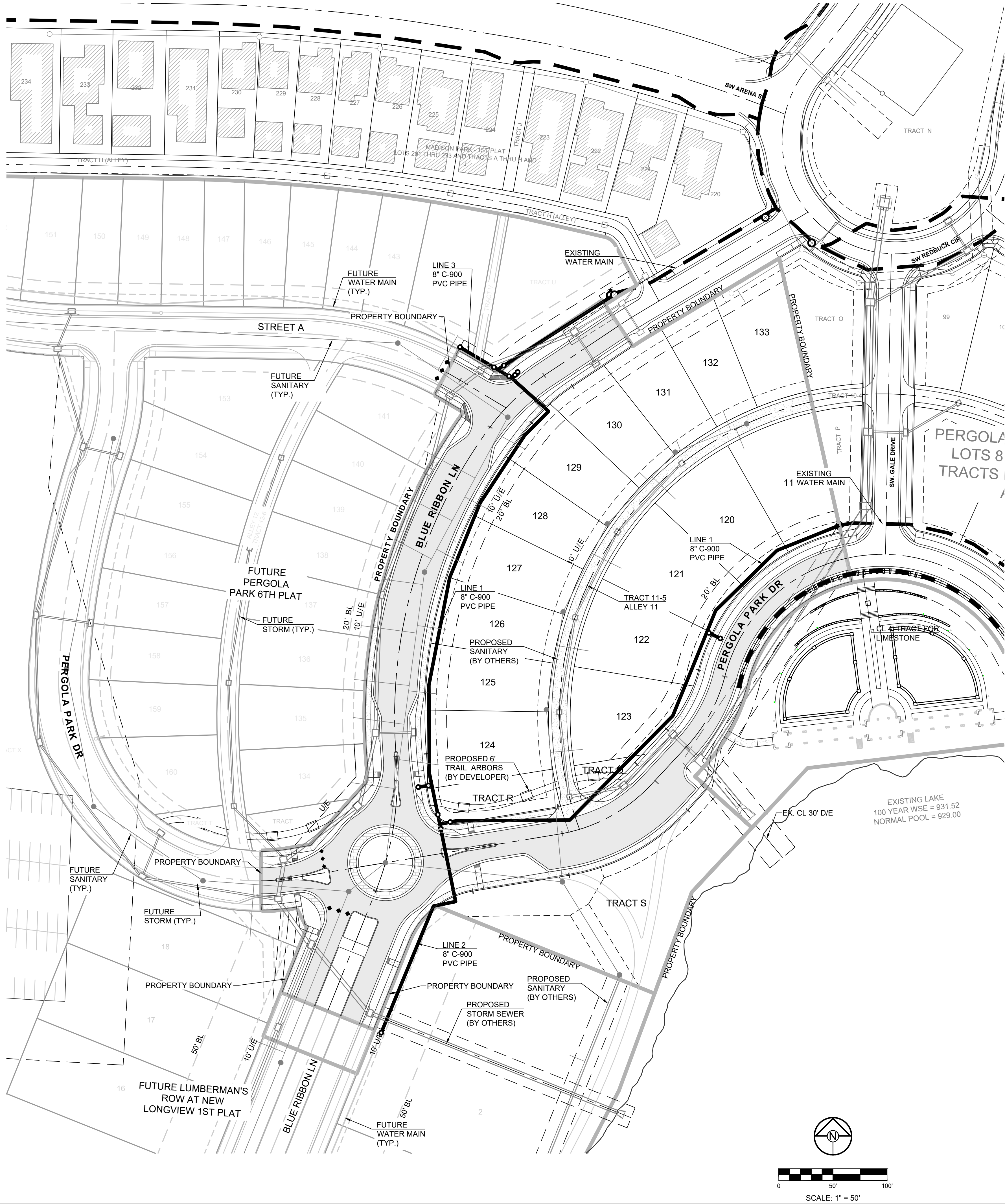
REVISION	DATE	DESCRIPTION
1	2-4-22	CITY COMMENTS
2	3-23-22	CITY COMMENTS
3	6-21-22	CITY COMMENTS
4		
5		
6		
7		
8		
9		
10		
11		
12		
13		
14		
15		
16		
17		
18		
19		
20		
21		
22		
23		
24		
25		
26		
27		
28		
29		
30		
31		
32		
33		
34		
35		
36		
37		
38		
39		
40		
41		
42		
43		
44		
45		
46		
47		
48		
49		
50		
51		
52		
53		
54		
55		
56		
57		
58		
59		
60		
61		
62		
63		
64		
65		
66		
67		
68		
69		
70		
71		
72		
73		
74		
75		
76		
77		
78		
79		
80		
81		
82		
83		
84		
85		
86		
87		
88		
89		
90		
91		
92		
93		
94		
95		
96		
97		
98		
99		
100		

COVER SHEET

SHEET

1

- GENERAL NOTES:
1. ALL CONSTRUCTION TO FOLLOW THE CITY OF LEE'S SUMMIT DESIGN AND CONSTRUCTION MANUAL AS ADOPTED BY ORDINANCE 5813.
 2. THE CONTRACTOR IS RESPONSIBLE FOR VERIFYING ALL EXISTING UTILITY LOCATIONS PRIOR TO EXCAVATIONS.
 3. FOR ALL WATER LINES THE MAXIMUM DEPTH OF COVER IS SEVEN (7) FEET.



MISSOURI GEOGRAPHIC REFERENCE SYSTEM BENCH MARK:

BM JA-148, IS A STAMPED KC METRO DISK SET IN CONCRETE LOCATED 2 MILES WEST OF THE INTERSECTION OF HIGHWAY 50 AND 3RD ST. IT IS 44 FT NORTH OF THE CENTER OF 3RD ST. AND 102.5 FT WEST OF THE CENTER OF THE EXIT FROM THE ADJACENT PARKING LOT.

ELEV. 935.18

PROJECT BENCHMARK:

CHISELED "SQUARE" ON STORM CURB INLET AT NORTHWEST INTERSECTION OF SW. TOWER PARK DRIVE AND SW. LONGVIEW BOULEVARD.

NORTHING: 998893.4148
EASTING: 2803318.5413
ELEV. 1004.09

PERGOLA PARK 5TH PLAT
WATER MAIN PLANS
- LEE'S SUMMIT, MISSOURI

REVISION DATE	DESCRIPTION
1 2-4-22	CITY COMMENTS
2 3-23-22	CITY COMMENTS
3 6-21-22	CITY COMMENTS
4	
5	
6	
7	
8	
9	
10	

DRAWN BY: BAL	CHECKED BY: MAB	DATE PREPARED: 11-17-2021	PROJ. NUMBER: 20-189
---------------	-----------------	---------------------------	----------------------

GENERAL LAYOUT

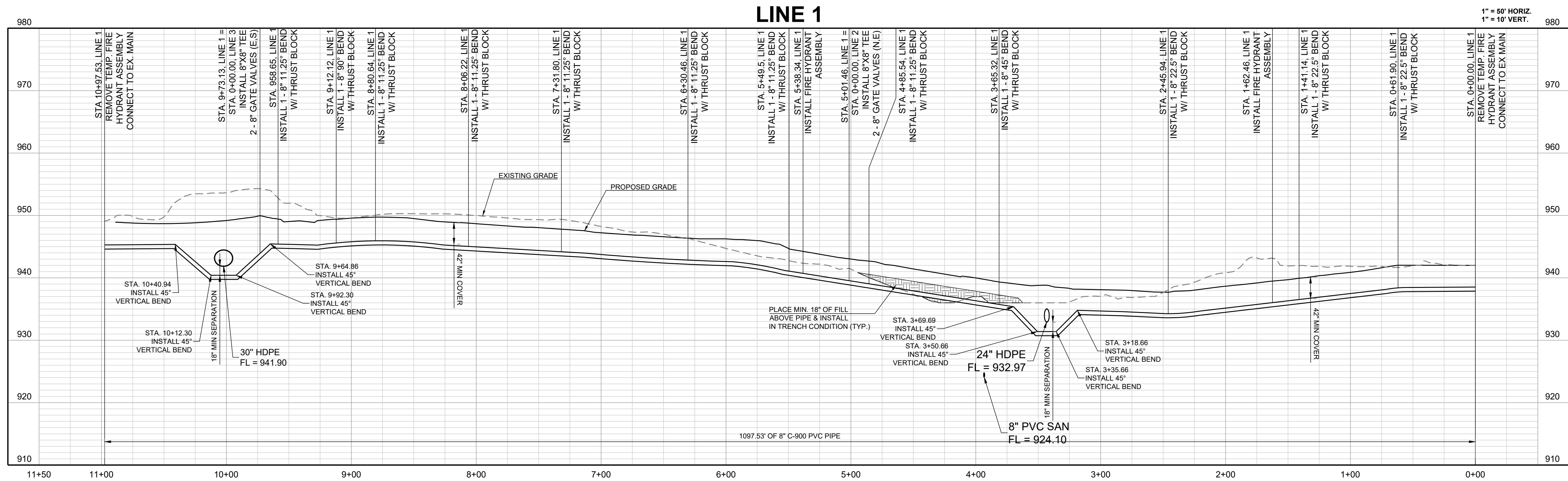
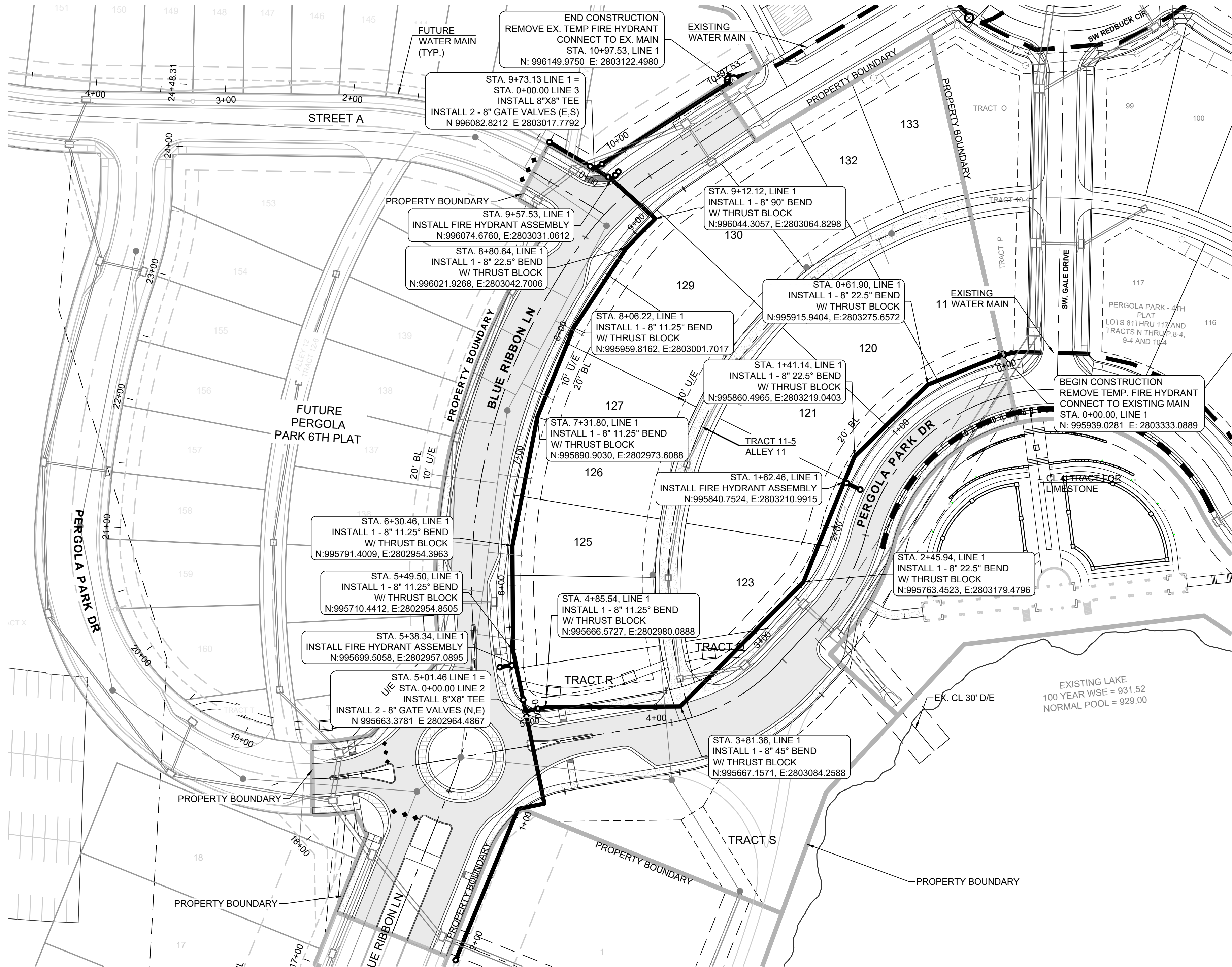
GENERAL NOTES:

- ALL CONSTRUCTION TO FOLLOW THE CITY OF LEE'S SUMMIT DESIGN AND CONSTRUCTION MANUAL AS ADOPTED BY ORDINANCE 5813.
- THE CONTRACTOR IS RESPONSIBLE FOR VERIFYING ALL EXISTING UTILITY LOCATIONS PRIOR TO EXCAVATIONS.
- FOR ALL WATER LINES THE MAXIMUM DEPTH OF COVER IS SEVEN (7) FEET.

PROJECT BENCHMARK:

CHISELED "SQUARE" ON STORM CURB INLET AT NORTHWEST INTERSECTION OF SW. TOWER PARK DRIVE AND SW. LONGVIEW BOULEVARD.

NORTHING: 998893.4148
EASTING: 2803318.5413
ELEV. 1004.09



PREPARED BY:



SCHLAGEL & ASSOCIATES, P.A.

PERGOLA PARK 5TH PLAT
WATER MAIN PLANS

- LEE'S SUMMIT, MISSOURI

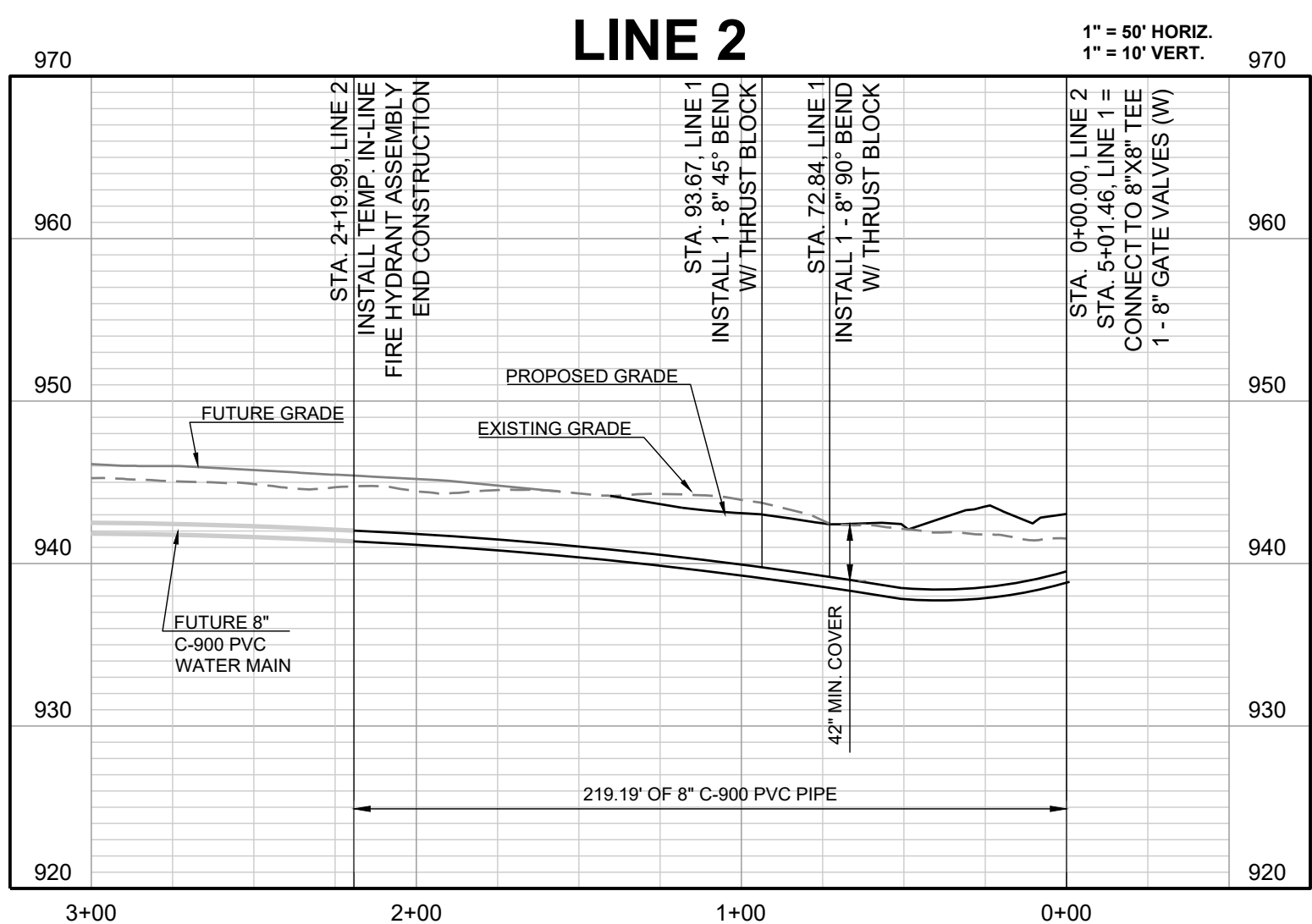
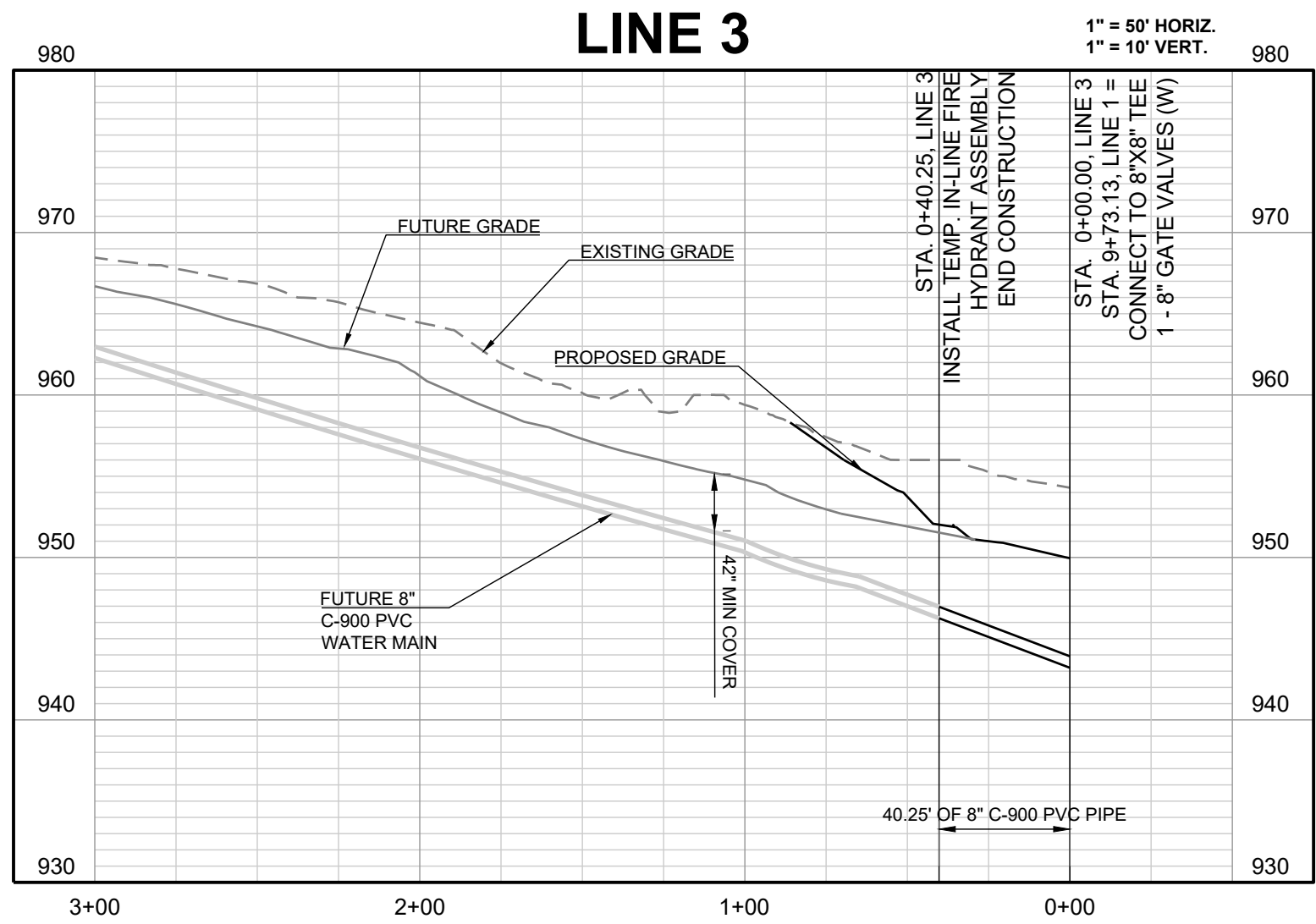
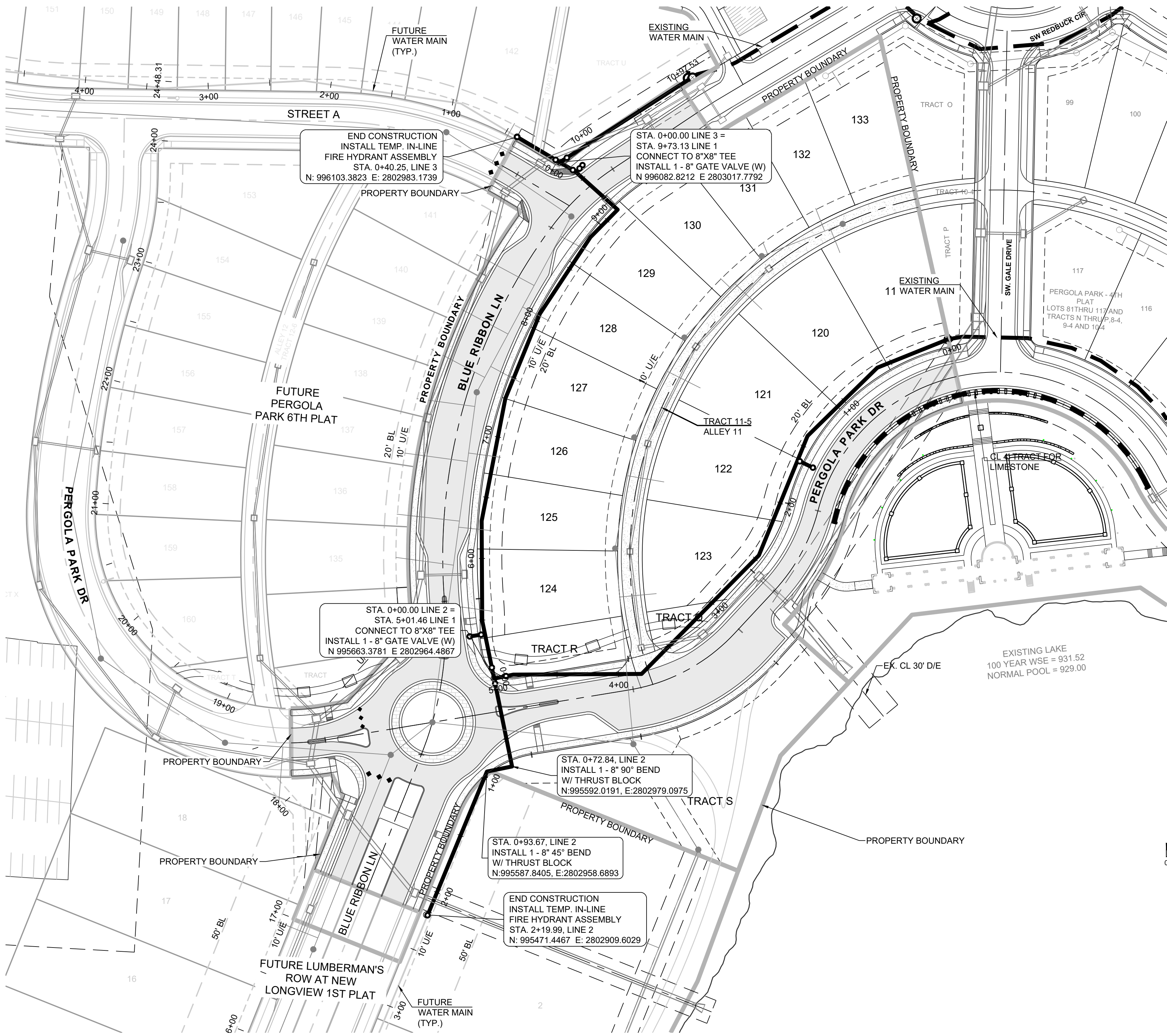
LINE 1 PLAN & PROFILE		
SHEET		3
DRAWN BY: BAL	REVISION DATE 1 2-4-22	DESCRIPTION CITY COMMENTS
CHECKED BY: MAB	2 3-23-22	CITY COMMENTS
	3 6-21-22	CITY COMMENTS
	4	
	5	
	6	
	7	
	8	
	9	
DATE PREPARED: 11-17-2021		
PROJ. NUMBER: 20-189		

- GENERAL NOTES:
1. ALL CONSTRUCTION TO FOLLOW THE CITY OF LEE'S SUMMIT DESIGN AND CONSTRUCTION MANUAL AS ADOPTED BY ORDINANCE 5813.
 2. THE CONTRACTOR IS RESPONSIBLE FOR VERIFYING ALL EXISTING UTILITY LOCATIONS PRIOR TO EXCAVATIONS.
 3. FOR ALL WATER LINES THE MAXIMUM DEPTH OF COVER IS SEVEN (7) FEET.

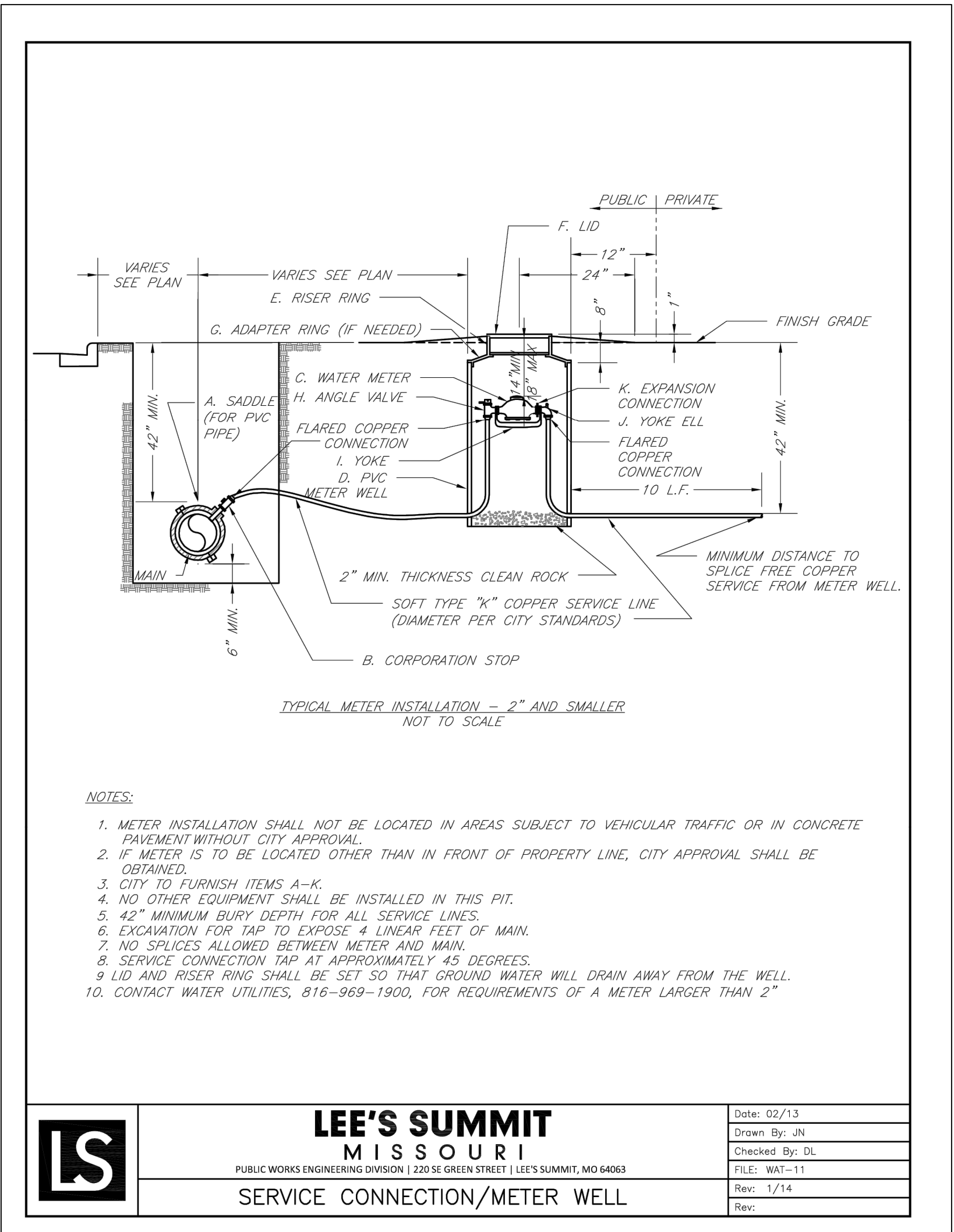
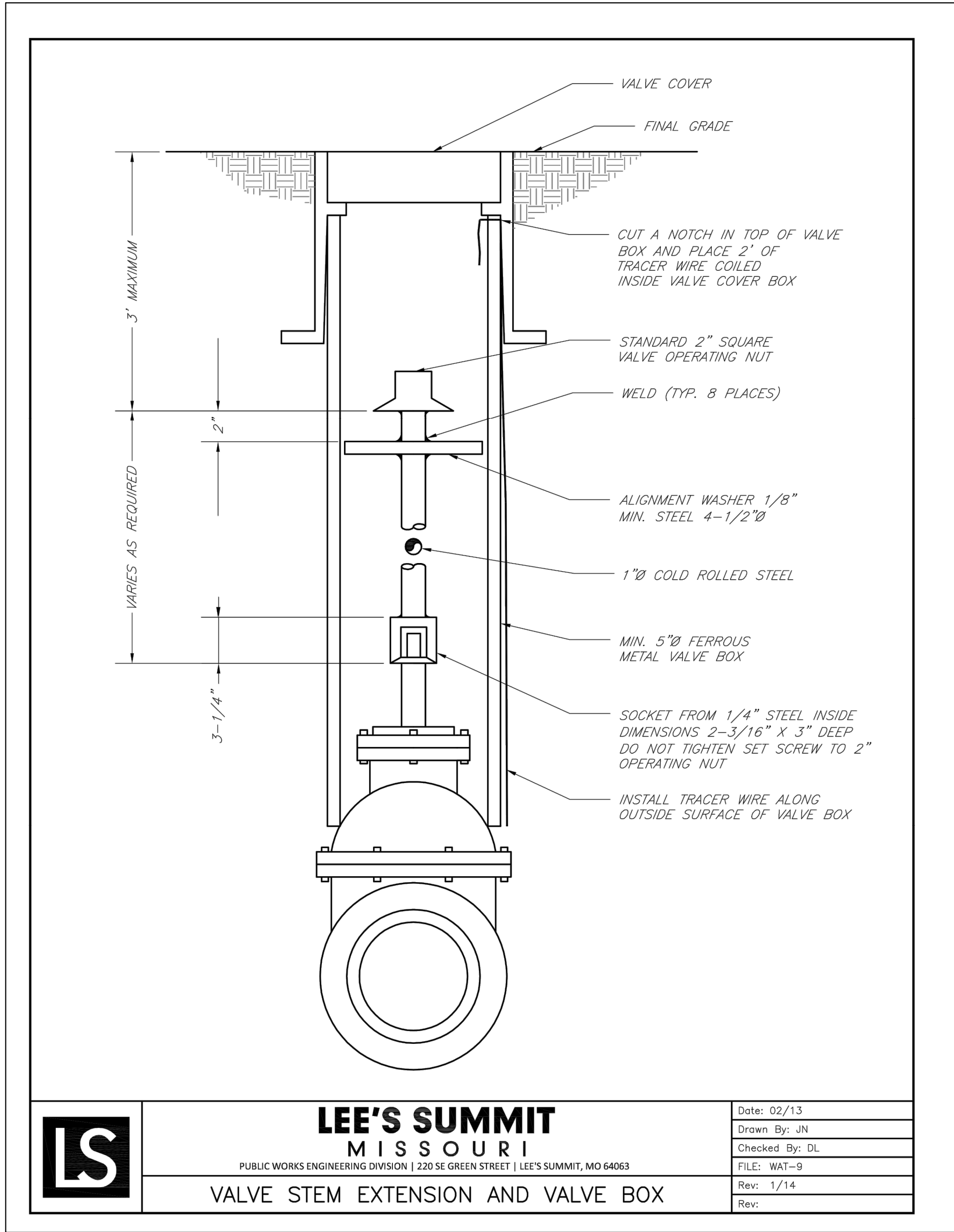
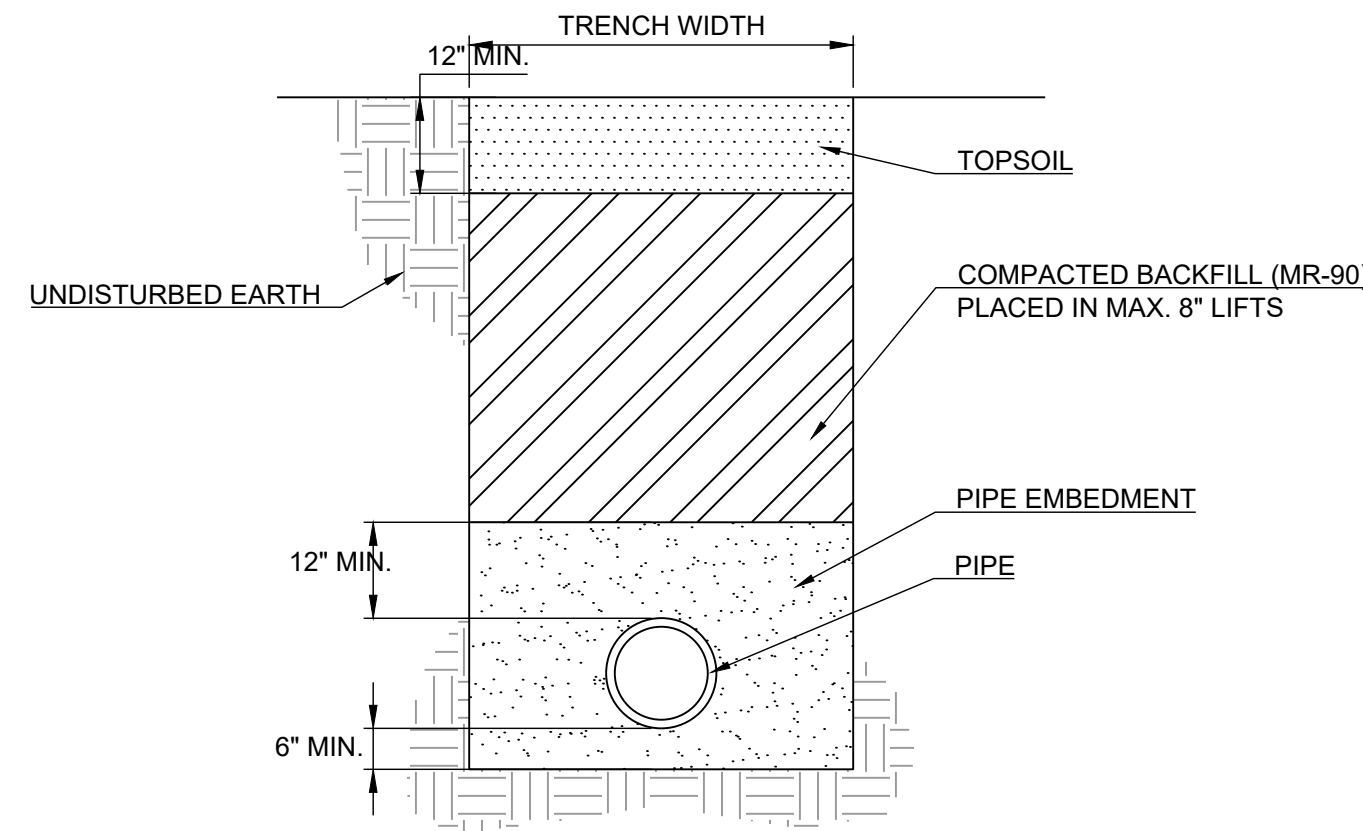
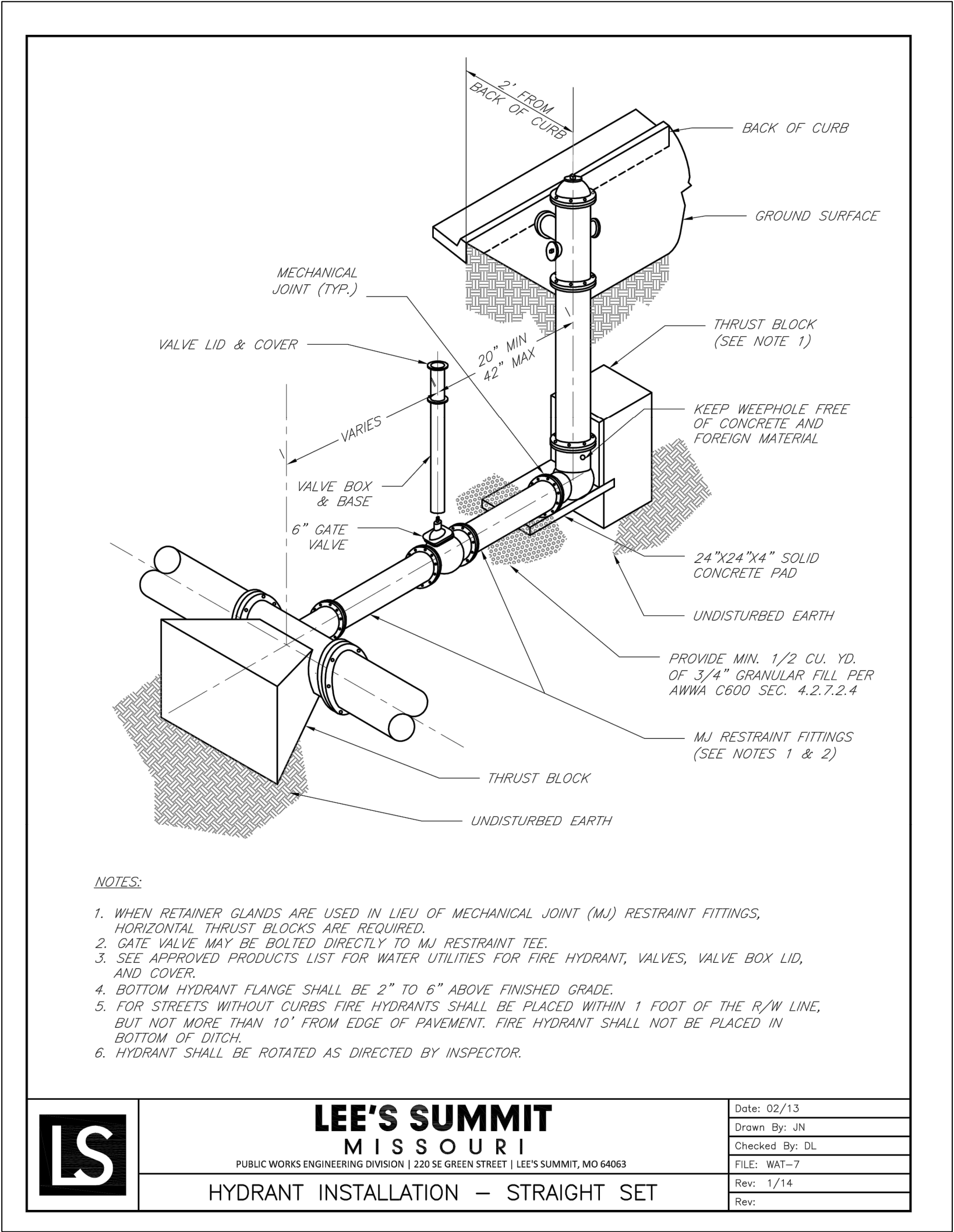
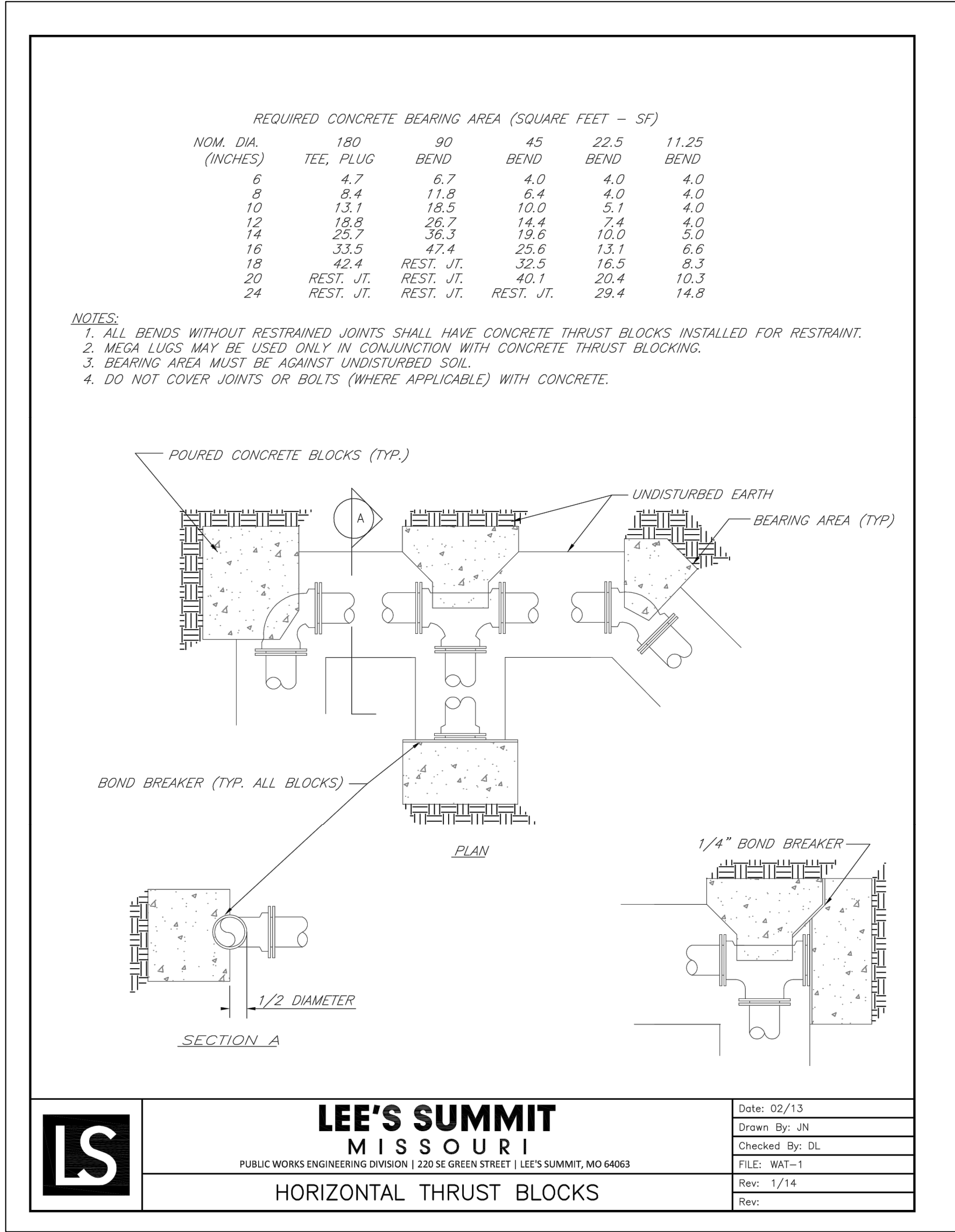
PROJECT BENCHMARK:

CHISELED "SQUARE" ON STORM CURB INLET AT NORTHWEST INTERSECTION OF SW. TOWER PARK DRIVE AND SW. LONGVIEW BOULEVARD.

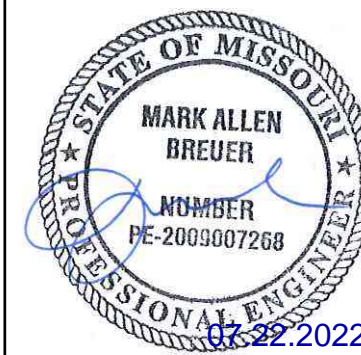
NORTHING: 998893.4148
EASTING: 2803318.5413
ELEV. 1004.09



REVISION DATE	DESCRIPTION
1 2-4-22	CITY COMMENTS
2 3-23-22	CITY COMMENTS
3 6-21-22	CITY COMMENTS
4	
5	
6	
7 11-17-2021	DATE PREPARED
8	PROJ. NUMBER:
9 20-189	



PREPARED BY:



SCHLAGEL & ASSOCIATES, P.A.

PERGOLA PARK 5TH PLAT
WATER MAIN PLANS

- LEE'S SUMMIT, MISSOURI

REVISION	DATE	DESCRIPTION
1	2-4-22	CITY COMMENTS
2	3-23-22	CITY COMMENTS
3	6-21-22	CITY COMMENTS
4		
5		
6		
7		
8		
9		
10		

DRAWN BY:	BAL
CHECKED BY:	MAB
DATE PREPARED:	11-17-2021
PROJ. NUMBER:	20-189

DETAIL SHEET

SHEET

5