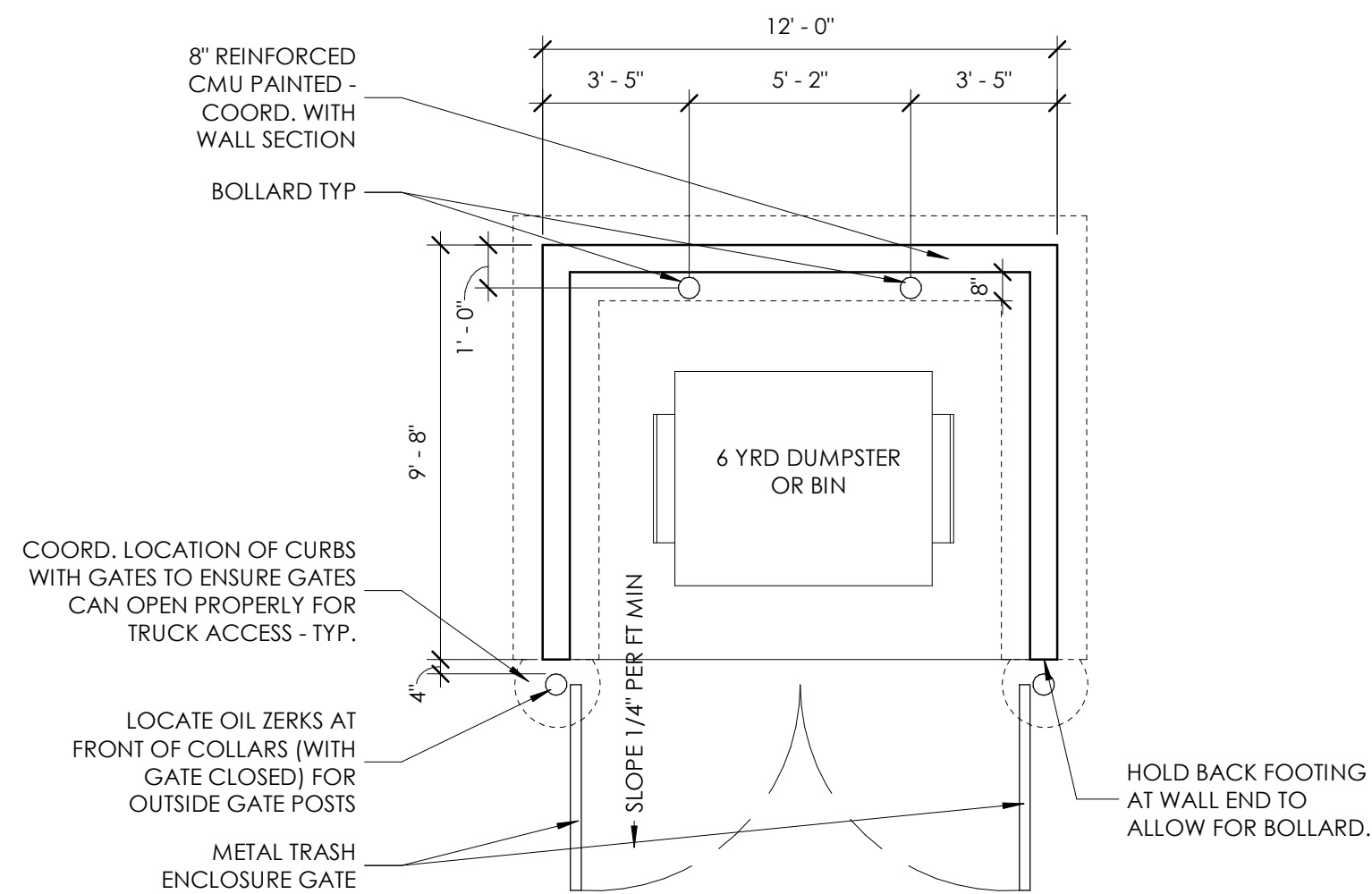
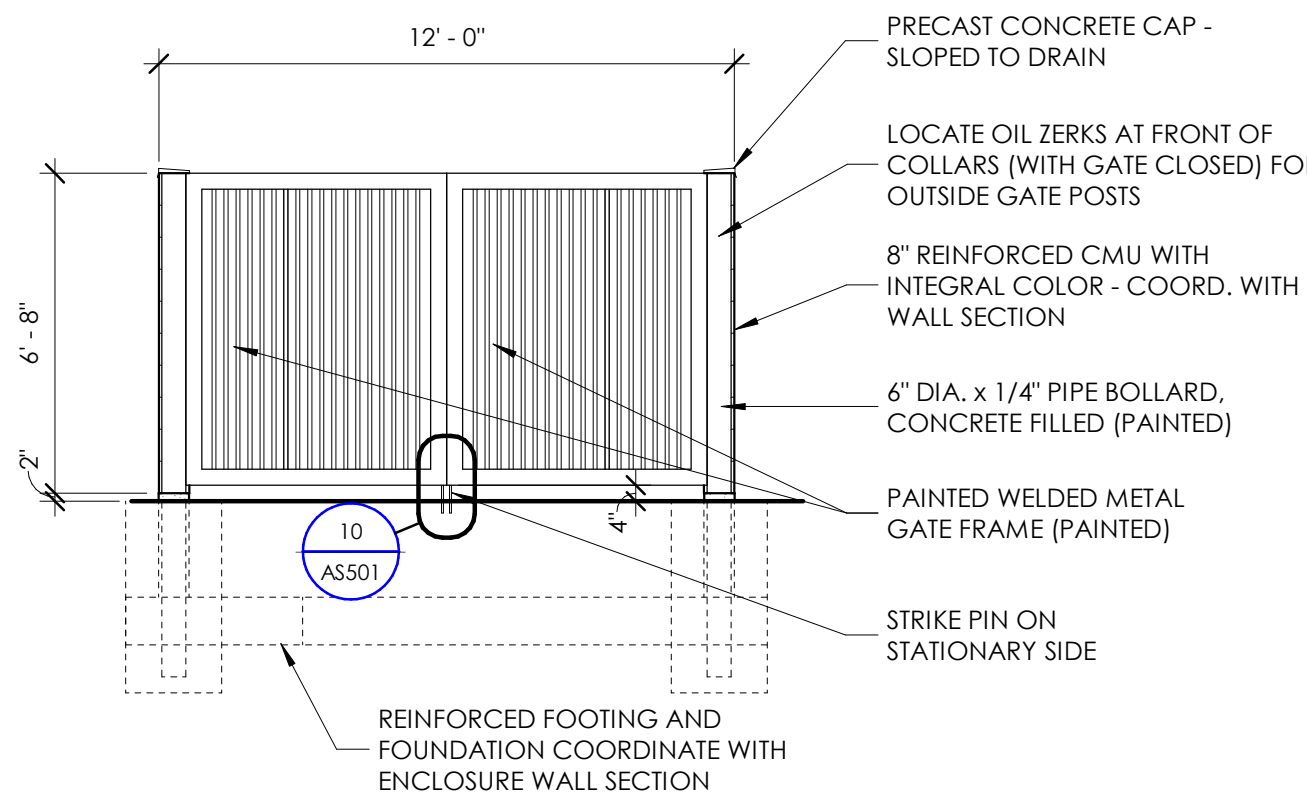


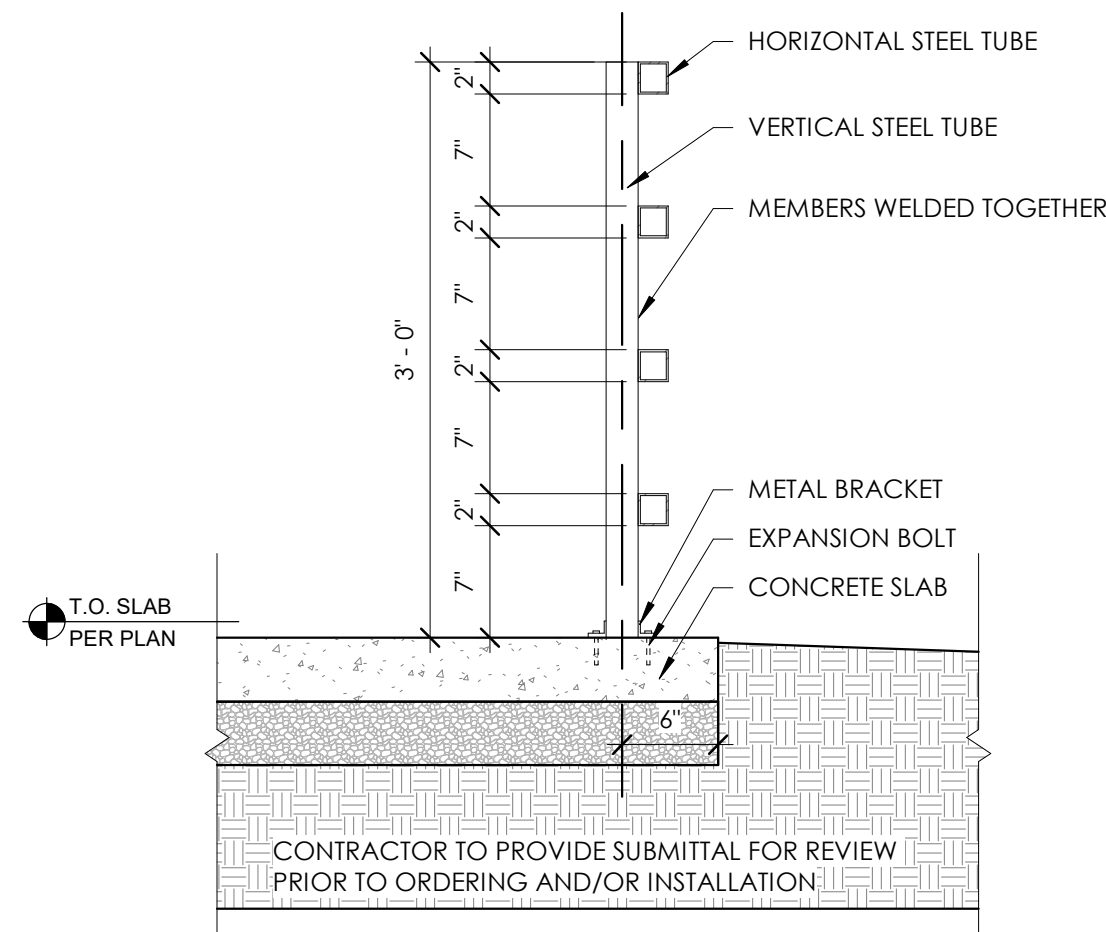
12 | TRASH ENCLOSURE - BACK ELEVATION
1/4" = 1'-0"



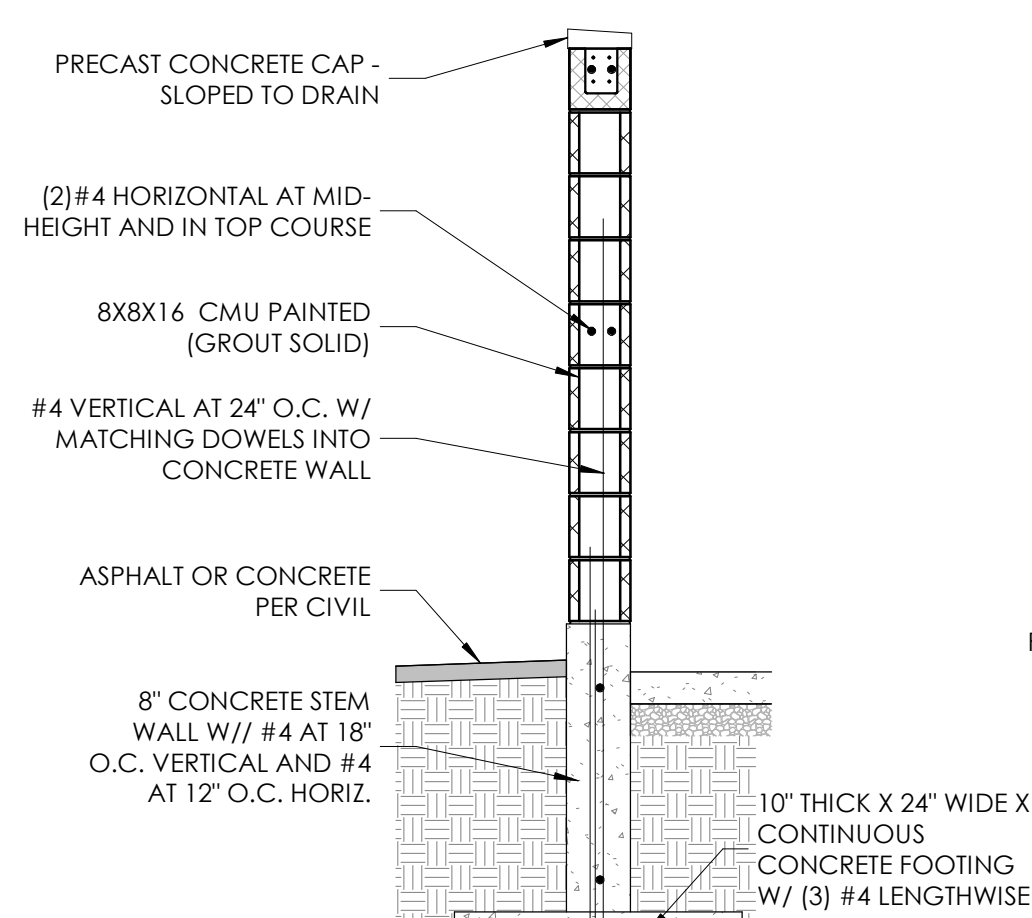
13 | TRASH ENCLOSURE
1/4" = 1'-0"



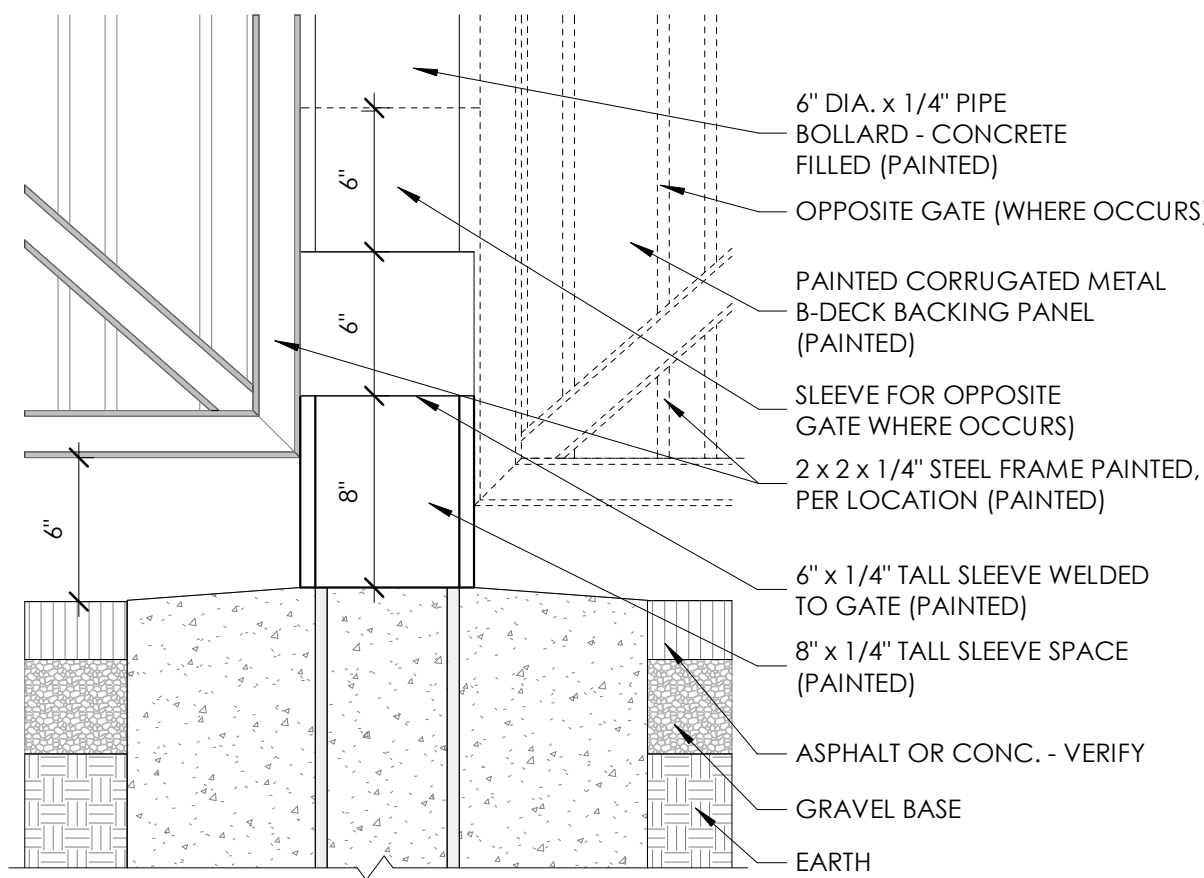
14 | TRASH ENCLOSURE - FRONT ELEVATION
1/4" = 1'-0"



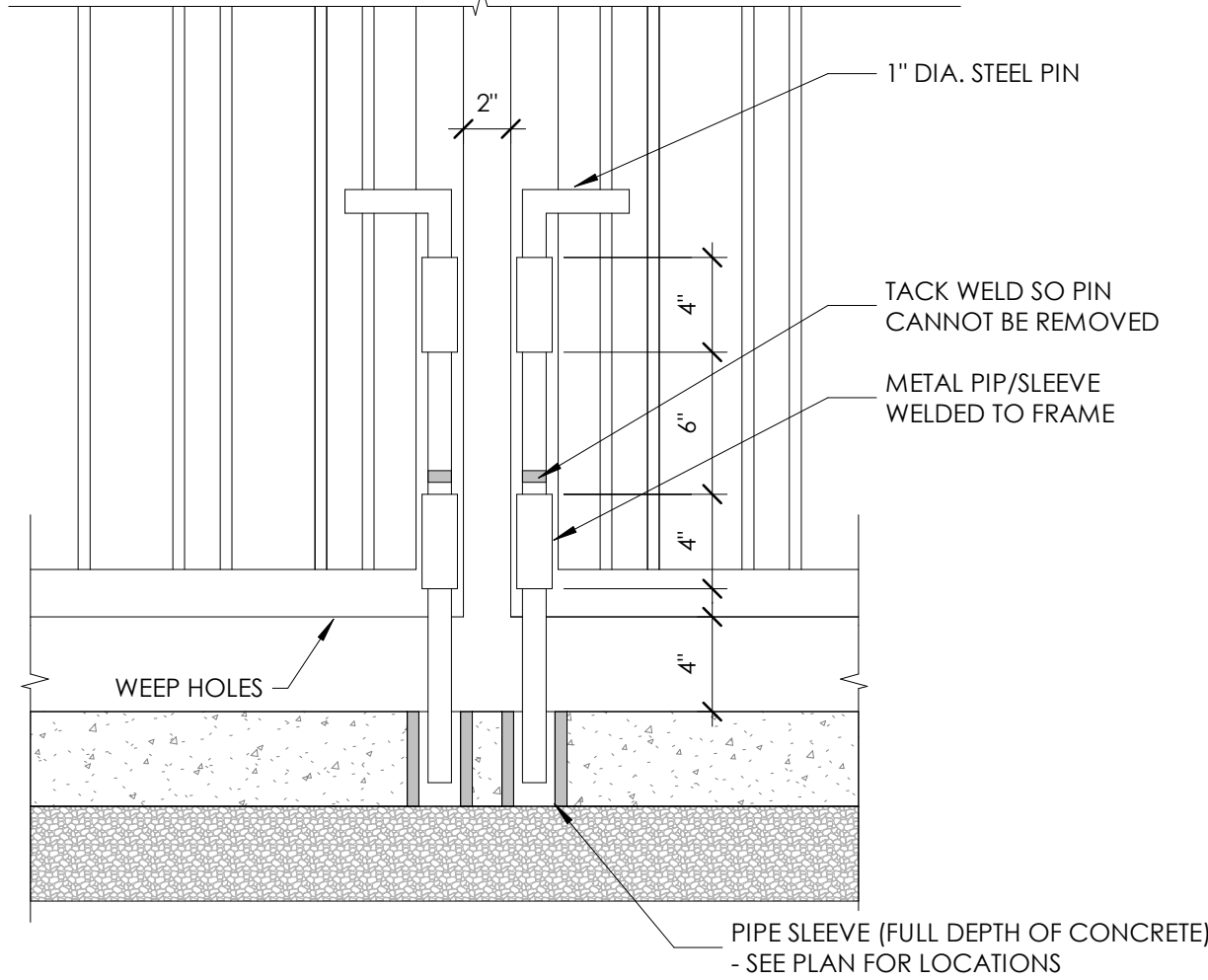
15 | RAILING FENCE DEATIL
1" = 1'-0"



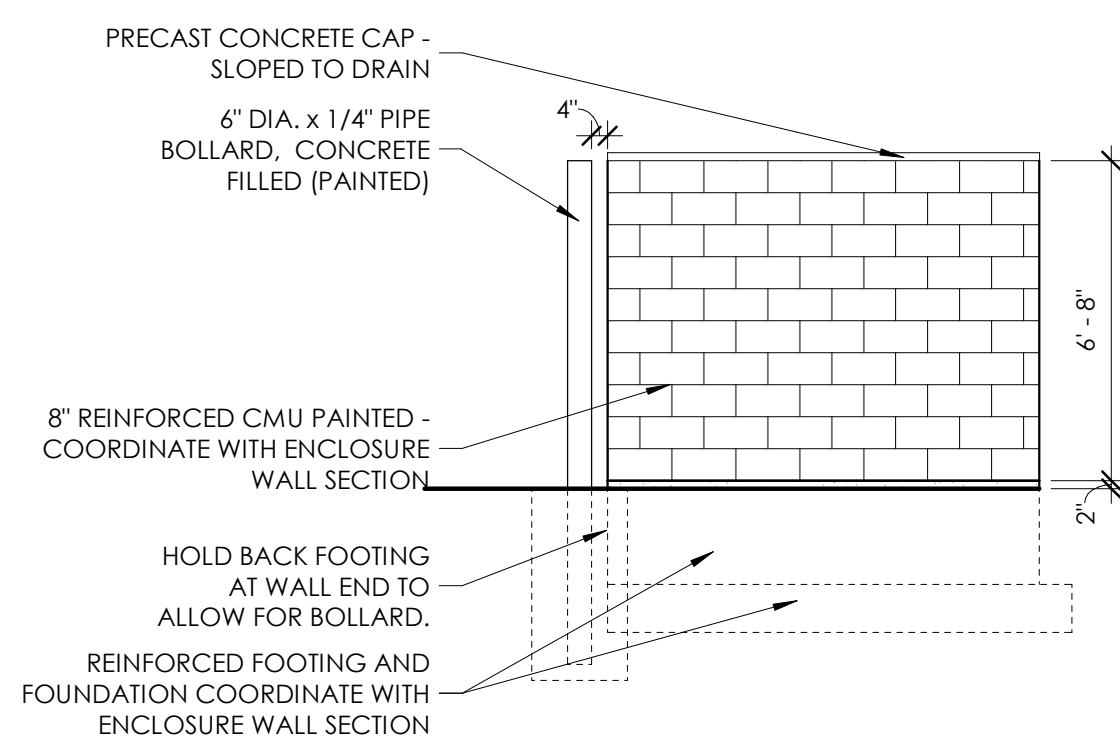
8 | TRASH ENCLOSURE WALL SECTION
1/2" = 1'-0"



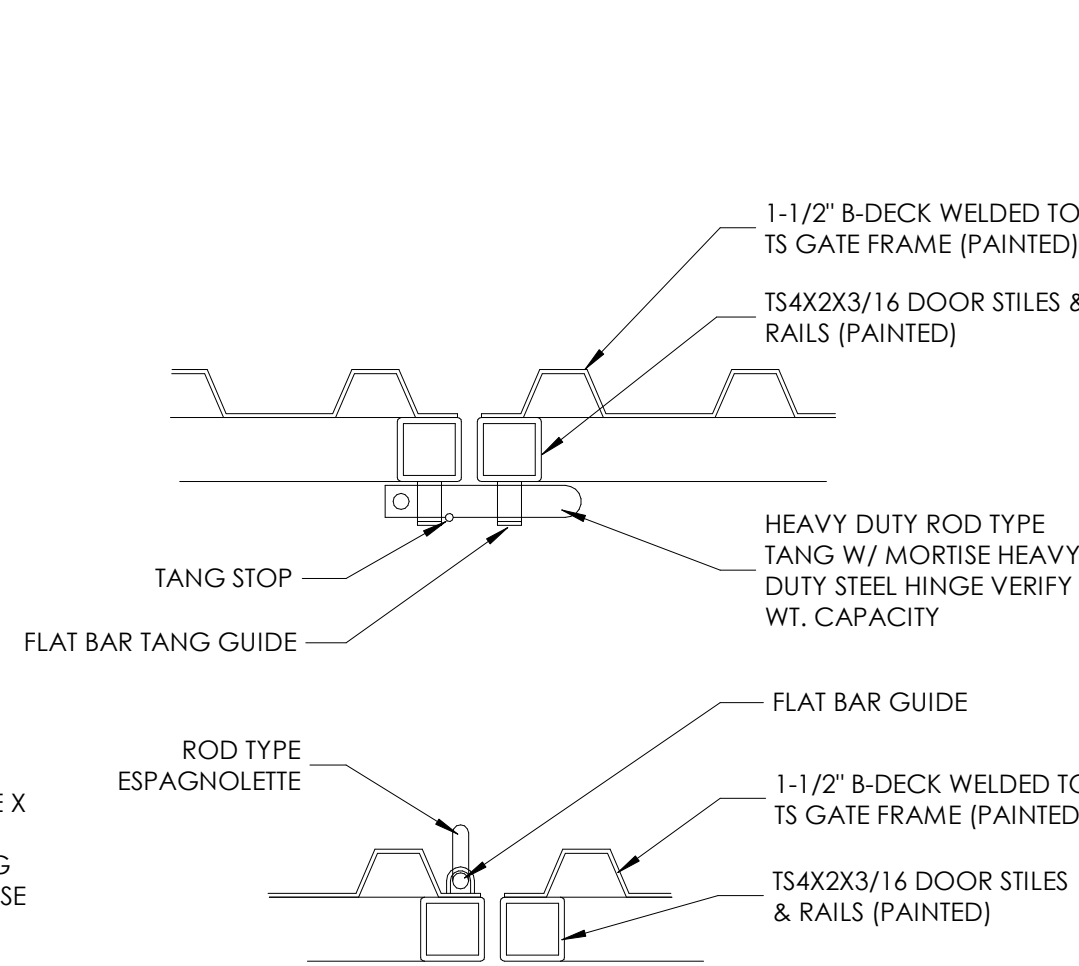
9 | DUMPSTER GATE SLEEVE DETAIL
1 1/2" = 1'-0"



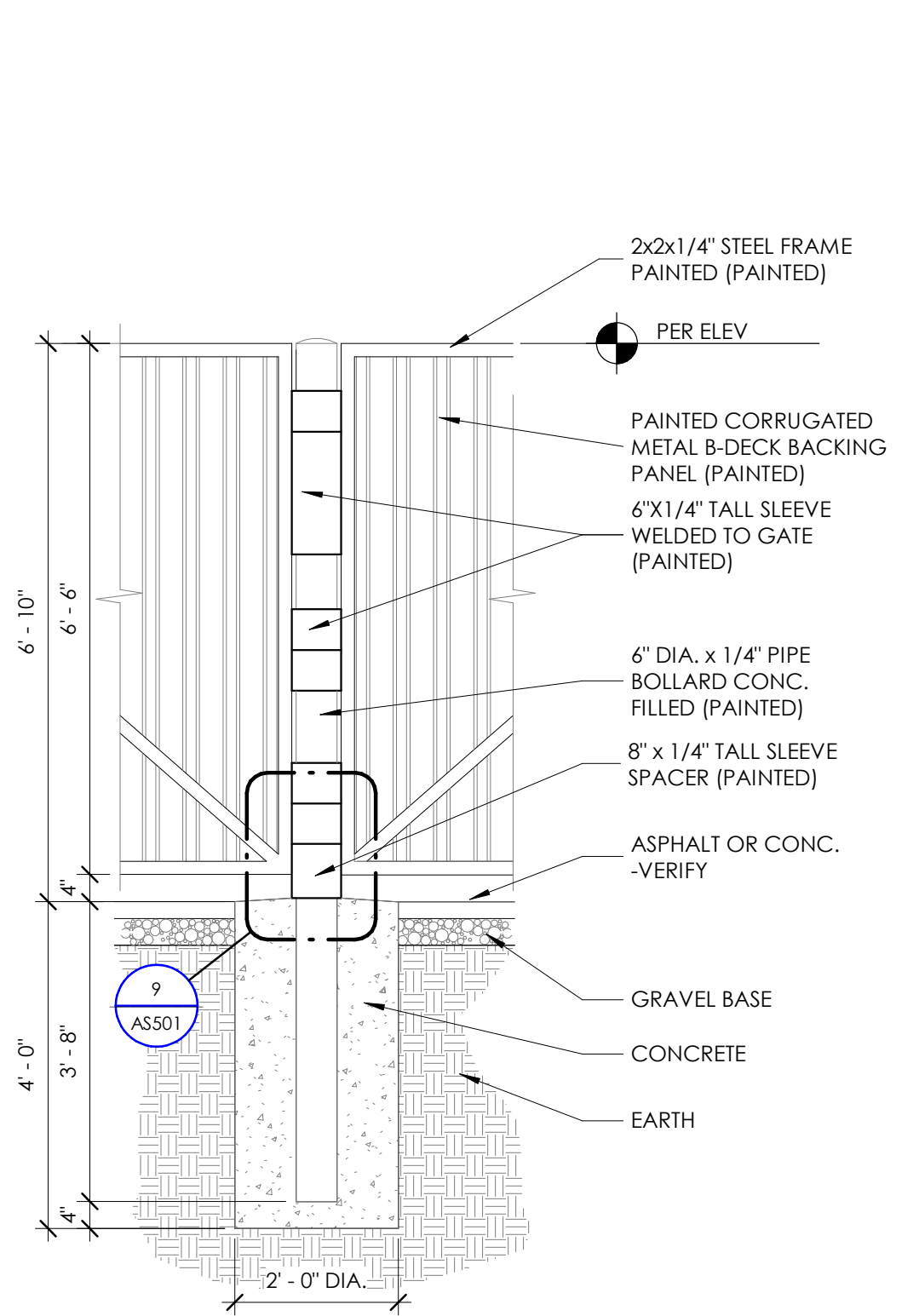
10 | DUMPSTER GATE PIN
1 1/2" = 1'-0"



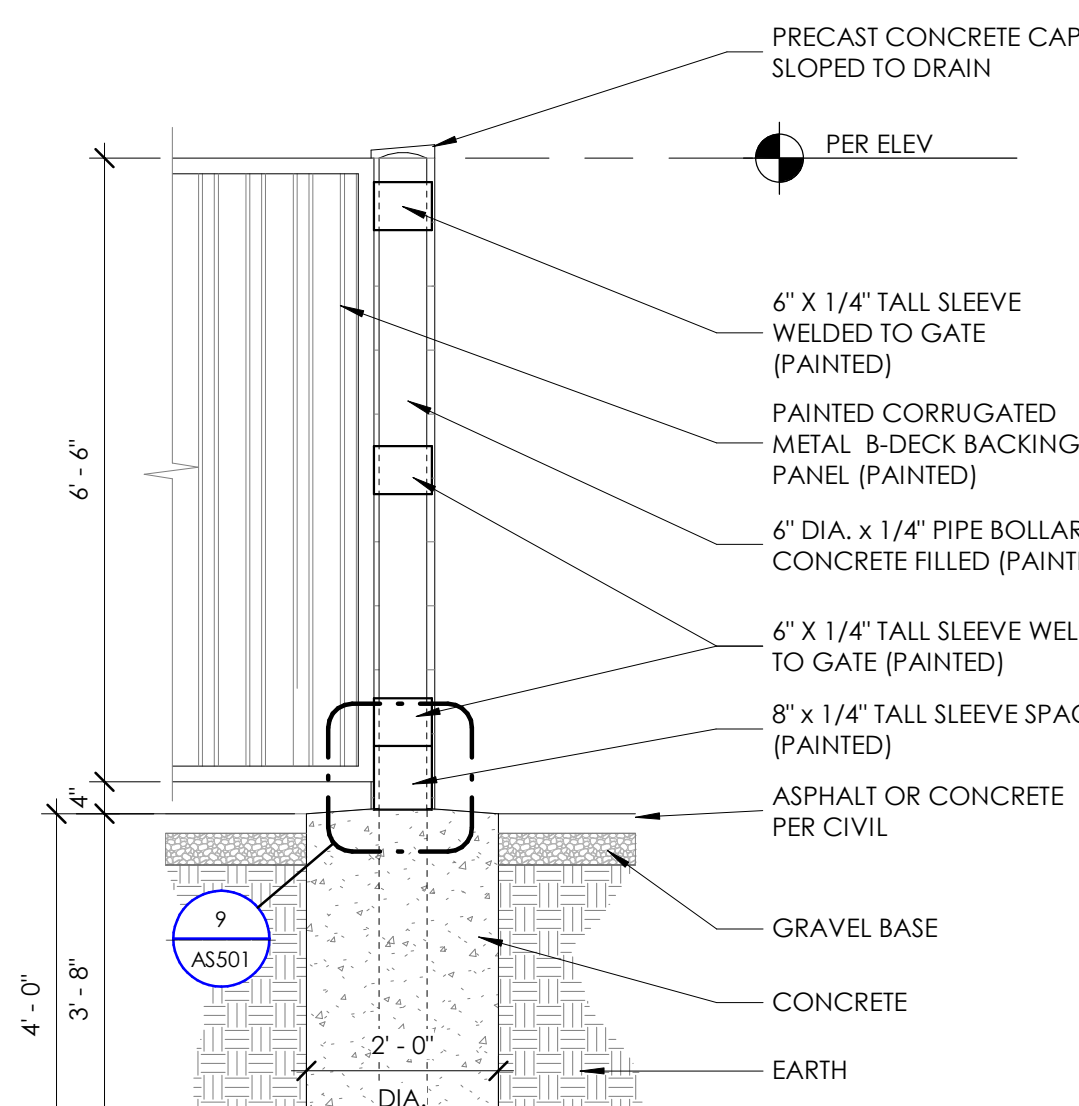
11 | TRASH ENCLOSURE - SIDE ELEVATION
1/4" = 1'-0"



5 | GATE ESPAGOLETTE
1" = 1'-0"

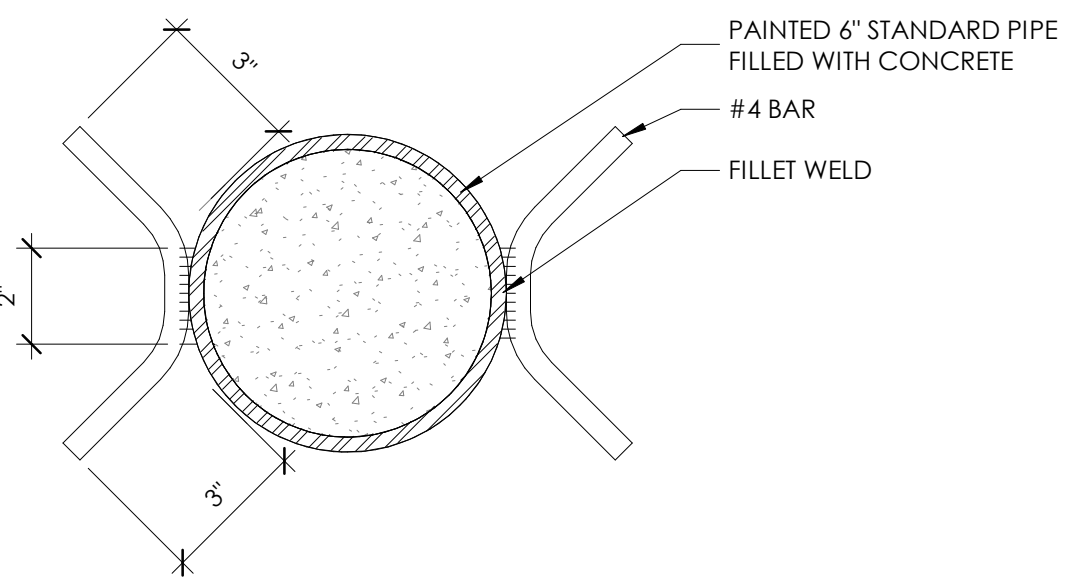


6 | DUMPSTER GATE - INTERMEDIATE POST
1/2" = 1'-0"

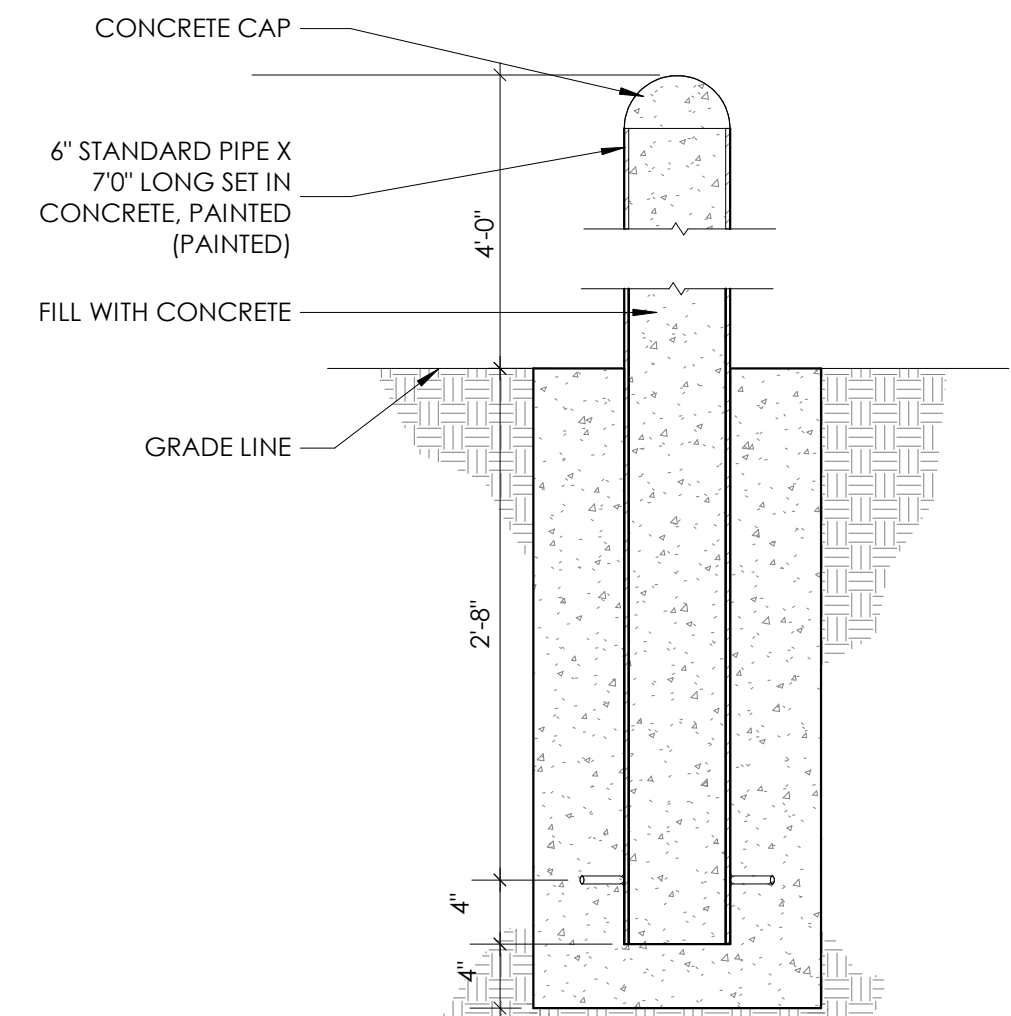


7 | DUMPSTER GATE - END POST DETAIL
1/2" = 1'-0"

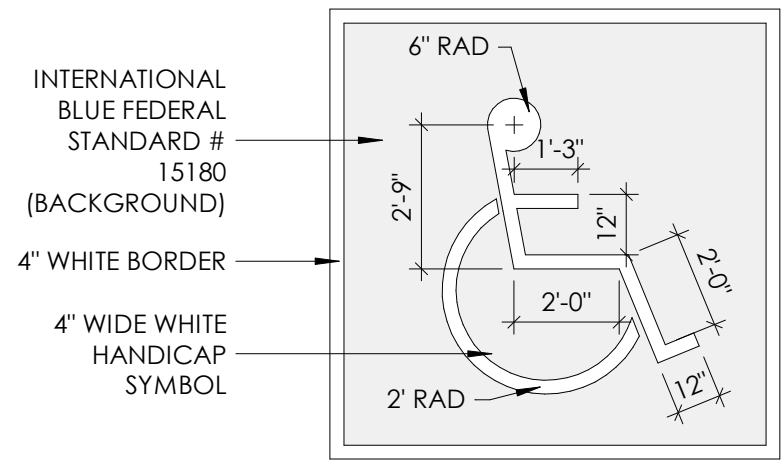
GENERAL TRASH ENCLOSURE FINISHES:
CMU - PAINTED (SW 7024 - FUNCTIONAL GRAY)
PREFINISHED METAL CAP - SHERWIN WILLIAMS 7069 IRON ORE
PAINTED DUMPSTER STEEL (POSTS, GATES, BOLLARDS, ETC.) - SHERWIN WILLIAMS 7069 IRON ORE



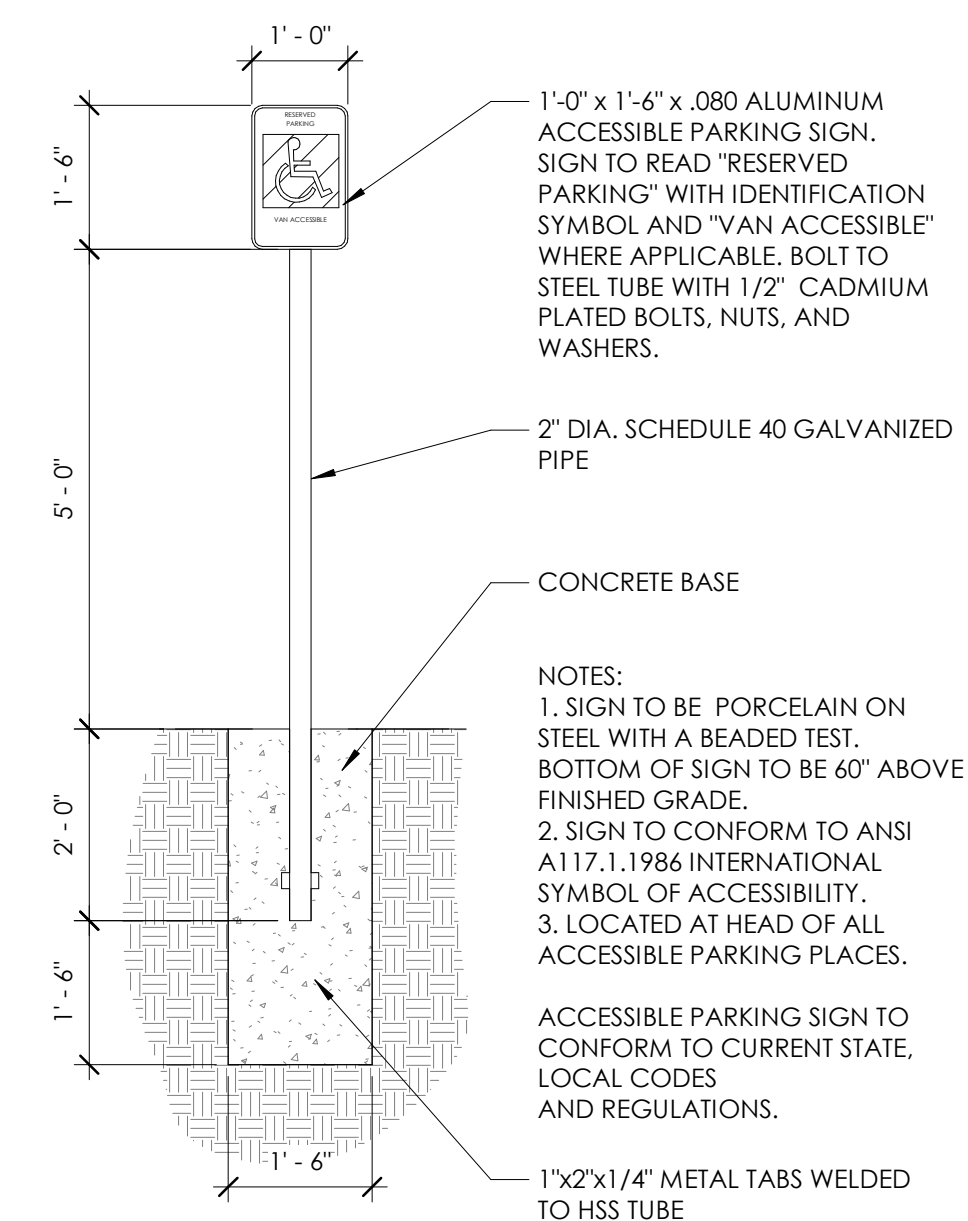
1 | BOLLARD CROSS SECTION
3" = 1'-0"



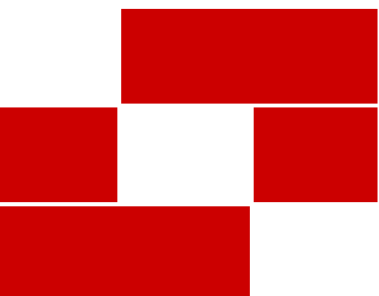
2 | BOLLARD SECTION
1/2" = 1'-0"



3 | ADA STRIPING SYMBOL
1/2" = 1'-0"



4 | ACCESSIBLE PARKING SIGN
1/2" = 1'-0"



Babcock Design

Salt Lake City
52 Exchange Place
Salt Lake City, UT 84111
801.531.1144

Boise
800 W MAIN STREET
SUITE 940
BOISE, ID 83702
208.424.7675

babcockdesign.com

sheet information		
revisions:	Δ	
num.	description	date

date:	12/1/2021
project number:	MO-53LEE
project status:	ISSUED FOR PERMIT
original drawing is 24" x 36"	
current as of: 12/9/2021 3:51:54 PM	

The information and content represented herein is considered by law the architect's instruments of service and are the property of Babcock Design. They are available for limited review and evaluation by clients, consultants, contractors, government agencies, vendors, and office personnel only in accordance with this notice. They are intended for use only for the project specified and are to be used for no other purpose or project including additions to or modification of the completed project. No part thereof may be copied, reproduced, photographed, modified, published, uploaded, transmitted, disclosed, sold, distributed by others in any way including in digital form, or otherwise used without the prior written consent of Babcock Design.

COPYRIGHT © 2017 BABCOCK DESIGN

stamp:

**PROGRESS
DRAWING FOR
PLAN REVIEW**

sheet number:

MOBETTAHS (TI)
for
LEE'S SUMMIT
520 NW Chipman Rd
Lee's Summit, MO 64086

**RELEASED FOR
CONSTRUCTION**
As Noted on Plans Review
Development Services Department
Lee's Summit, Missouri
05/31/2022

sheet title:

SITE DETAILS

sheet number:

AS501