

EXHIBIT A

DESCRIPTION:

A 40 foot wide tract of land being part of Southwest Longview Boulevard right-of-way as platted in "TOWER PARK COMMERCIAL - PHASE 2, LOTS 3 and 4 and TRACT J", a subdivision in the said City of Lee's Summit, as recorded in Jackson County Recorder of Deeds as Instrument Number 2004I0107121, adjoining and parallel with the East line of LOT 3, of said "TOWER PARK COMMERCIAL - PHASE 2, LOTS 3 and 4 and TRACT J" and being more particularly described as follows.

Beginning at the Northwest corner of said Southwest Longview Boulevard right-of-way of said "TOWER PARK COMMERCIAL - PHASE 2, LOTS 3 and 4 and TRACT J";

thence along the North line of said "TOWER PARK COMMERCIAL - PHASE 2, LOTS 3 and 4 and TRACT J", North 58 degrees 46 minutes 33 seconds East, a distance of 40.00 feet;

thence along a line 40.00 East of and parallel with East line of said LOT 3 and the West line of said Southwest Longview Boulevard right-of-way, South 31 degrees 13 minutes 27 seconds East, a distance of 185.25 feet;

thence South 58 degrees 46 minutes 33 seconds West, a distance of 40.00 feet to the Southeast corner of said LOT 3;

thence along the East line of said LOT 3 and the West line of said Southwest Longview Boulevard right-of-way, North 31 degrees 13 minutes 27 seconds West, a distance of 185.25 feet to the Point of Beginning,

and containing 7410.01 square feet or 0.1701 acres, more or less.



David Allen Rinne, P.L.S.
MO# PLS-2014000198

DRAWN BY:	JWT
CHECKED BY:	SCH
DATE:	5-16-2022
PROJECT NO:	20-106
SCALE:	
SHEET	1 of 2

**SCHLAGEL**

ENGINEERS PLANNERS SURVEYORS LANDSCAPE ARCHITECTS

14920 West 107th Street • Lenexa, Kansas 66215

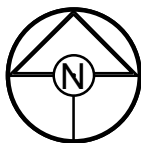
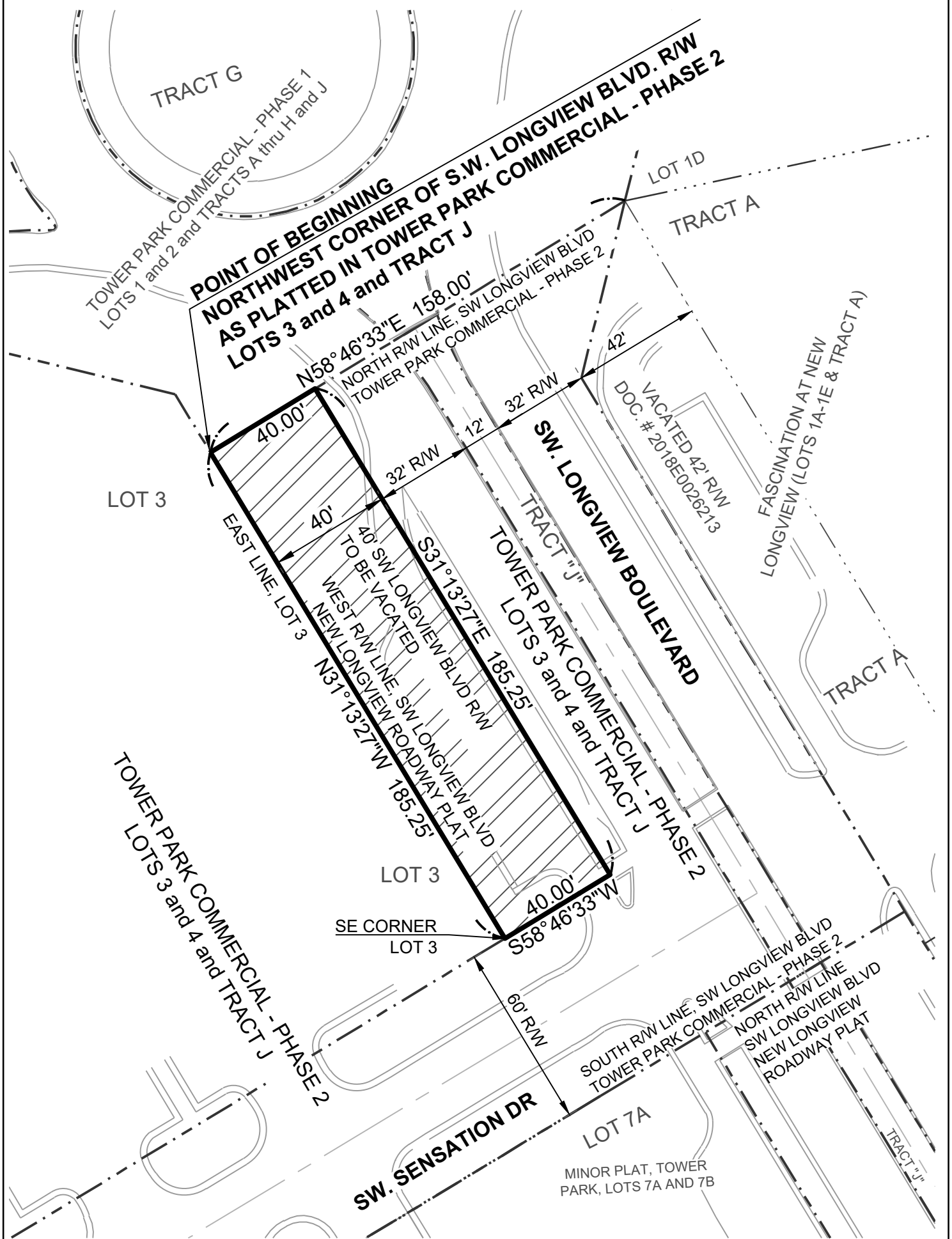
www.schlagelassociates.com • (913) 492-5158 • Fax: (913) 492-8400

Missouri State Certificates of Authority

#E2002003800-F #LAC2001005237 #LS2002008859-F

RIGHT-OF-WAY VACATE

EXHIBIT A



DRAWN BY:	JWT
CHECKED BY:	SCH
DATE:	5-16-2022
PROJECT NO:	20-106
SCALE:	1" = 40'
SHEET	2 of 2



SCHLAGEL

ENGINEERS PLANNERS SURVEYORS LANDSCAPE ARCHITECTS

14920 West 107th Street • Lenexa, Kansas 66215
www.schlagelassociates.com • (913) 492-5158 • Fax: (913) 492-8400
Missouri State Certificates of Authority
#E2002003800-F #LAC2001005237 #LS2002008859-F

RIGHT-OF-WAY VACATE