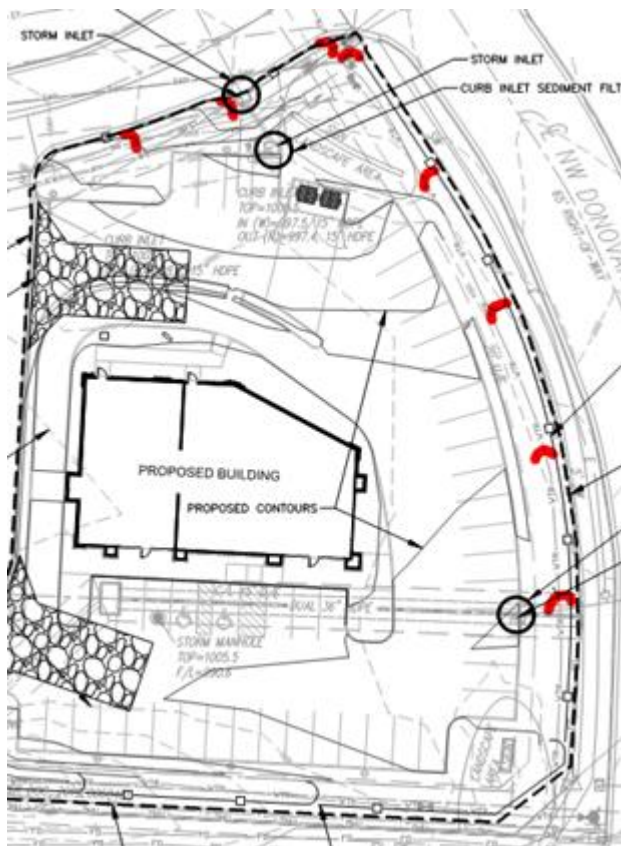


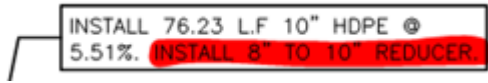
Kevin,

Just sharing a couple of suggestions/ideas here on the above-referenced project.

- You may be able to obtain a land disturbance area that is below 1 acre if you remove the road area and the area located in front of the landscape sign to the north, since no grading or construction work are proposed within them. Sheet 2 clearly shows the limits of the 1.035 acre. The road covers about 1,800 sf and the area located between the front of the sign and the eastern P/L covers about 800 sf. This should reasonably get you below 1 acre of total disturbed area. Feel free to properly re-draw the limits of the disturbance area. Let's try to keep it as simple as possible. Anything below 0.99 acre is very acceptable. **Sheet 2 shows the BOUNDARY of the property not the LIMITS OF LAND DISTURBANCE. The LIMITS OF LAND DISTURBANCE are shown on SHEET 8 and are labeled. There is also a legend that shows the linetype that is shown for the LIMITS OF LAND DISTURBANCE. The total area of LAND DISTURBANCE is also shown on SHEET 8 and equals 0.83 acres.**
- Silt fence J-hooks also need to face uphill (approximately) as shown below. **The silt fence has been changed to show the J-hooks as shown below.**



- Re-include the leader on sheet 5, but please remove the reddish part. The 10" HDPE note has been re-included to the Utility Plan.



- Make sure that the proposed overstory trees to the north do not encroach into the existing 10' wide U/E. The overstory trees to the north did not encroach on the existing 10 foot easement but have been moved south to ensure that this is clear.

Feel free to revise and re-upload the civil set of plans so that I can grant engineering approval. Otherwise another round of comments will be sent to you, next week.

Thank you