

MARKET STREET CENTER
PUBLIC SANITARY SEWER IMPROVEMENTS
IN THE CITY OF LEE'S SUMMIT, JACKSON COUNTY, MO

GENERAL NOTES:

THE DESIGN AND CONSTRUCTION OF THE PUBLIC SANITARY SEWER FACILITIES SHALL BE GOVERNED BY THE CITY OF LEE'S SUMMIT, MISSOURI DESIGN CRITERIA AND TECHNICAL SPECIFICATIONS, LATEST EDITIONS.

UTILITY COMPANIES:

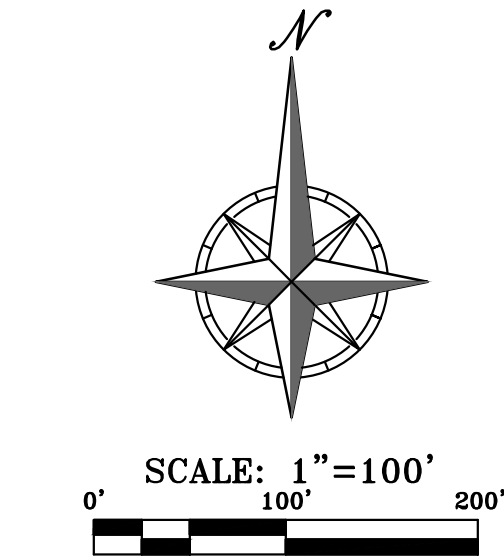
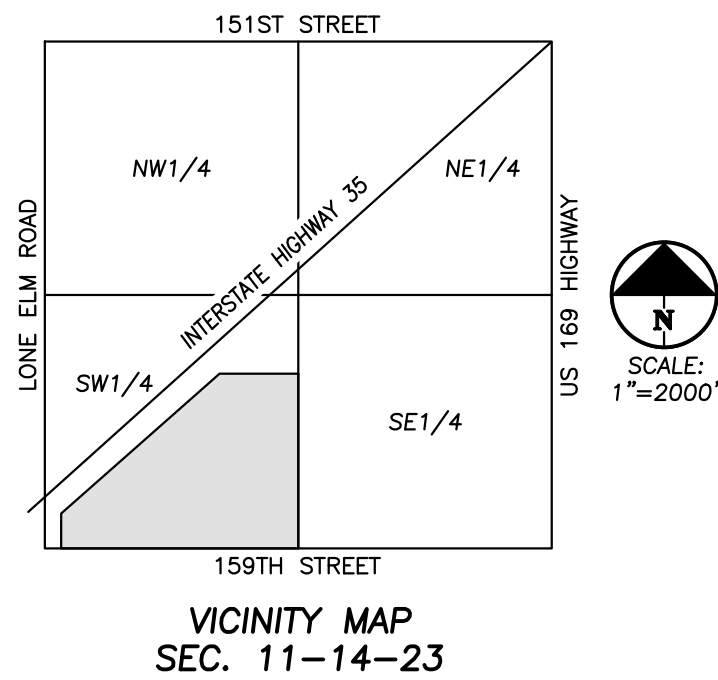
MISSOURI GAS ENERGY (816) 969-2218
LUCAS WALLS (LUCAS.WALLS@SUG.COM)
3025 SOUTHEAST CLOVER DRIVE
LEE'S SUMMIT, MO 64082

EVERGY (816) 347-4339
PHILLIP INGRAM (PHILLIP.INGRAM@KCPL.COM)
RON DEJARNETTE (RON.DEJARNETTE@KCPL.COM)
1300 HAMBLEN ROAD
LEE'S SUMMIT, MO 64081

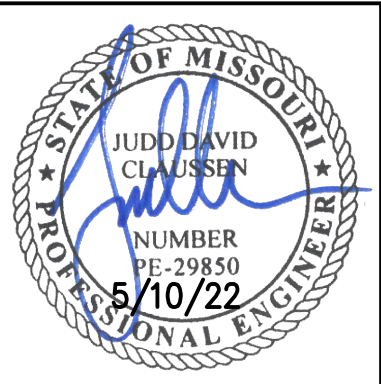
STORM SEWER (PUBLIC WORKS DEPARTMENT) (816) 969-1800
220 SE GREEN STREET
LEE'S SUMMIT, MO 64063

SANITARY SEWER & WATER (WATER UTILITIES DEPT.) (816)-969-1900
1200 SE HAMBLEN ROAD,
LEE'S SUMMIT, MO 64081

AT&T (913) 383-4929
MR. CLAYTON ANSPAUGH (CA4089@ATT.COM) (913) 383-4849-FAX
9444 NALL AVENUE
OVERLAND PARK, KANSAS 66207



PREPARED & SUBMITTED BY:
PHELPS ENGINEERING, INC.
1270 N. WINCHESTER
OLATHE, KANSAS 66061



JUDD D. CLAUSSEN, MISSOURI P.E.#29850

DATE

	INDEX
SS-1	COVER SHEET
SS-2	SANITARY SEWER PLAN & PROFILES
SS-3	EROSION CONTROL & RESTORATION
SS-4	SANITARY SEWER DETAILS
SS-5	PAVEMENT DETAILS

RELEASED FOR
CONSTRUCTION
As Noted on Plans Review
Development Services Department
Lee's Summit, Missouri
05/17/2022

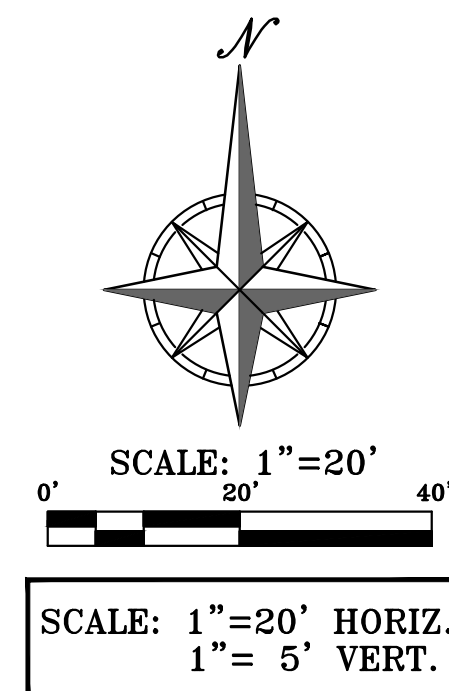
COVER SHEET
MARKET STREET CENTER
M291 AND SW MARKET STREET
CITY OF LEE'S SUMMIT, JACKSON COUNTY, MISSOURI

PROJECT NO.	DATE	BY	APP.	REVISIONS
210639	05-10-22	SMH	DAF	
DATE: 02-04-22	DRAWN BY: JDC			
CHECKED: DAF	APPROVED: JDC			
KANSAS	DATE OF AUTHORIZATION			
ENGINEERING	NO. 29850			
MISSOURI	DATE OF AUTHORIZATION			
ENGINEERING	NO. 29850			

SHEET
SS-1

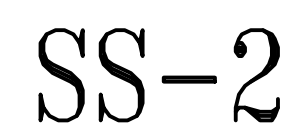
PHELPS ENGINEERING, INC.
1270 N. Winchester
Olathe, Kansas 66061
(913) 393-1155
Fax (913) 393-1166
www.phelpsenr.com

PLANNING
ENGINEERING
IMPLEMENTATION



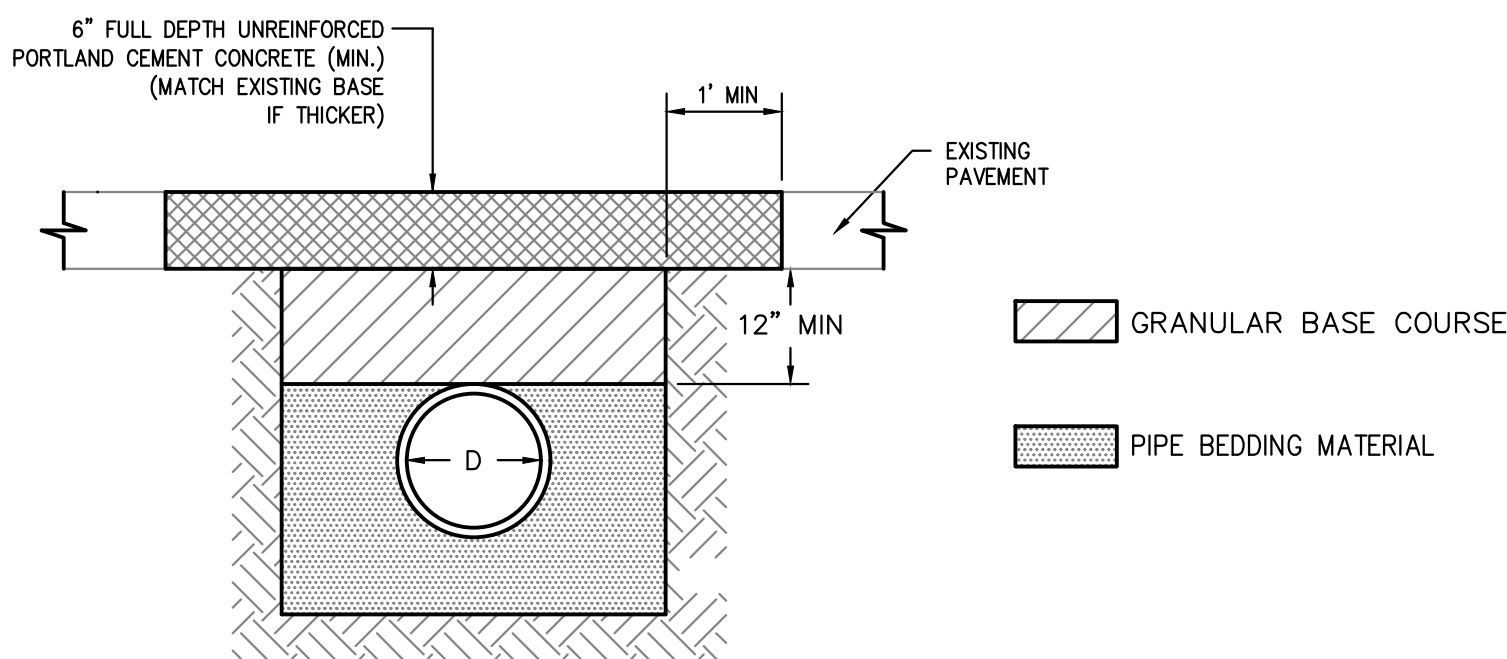
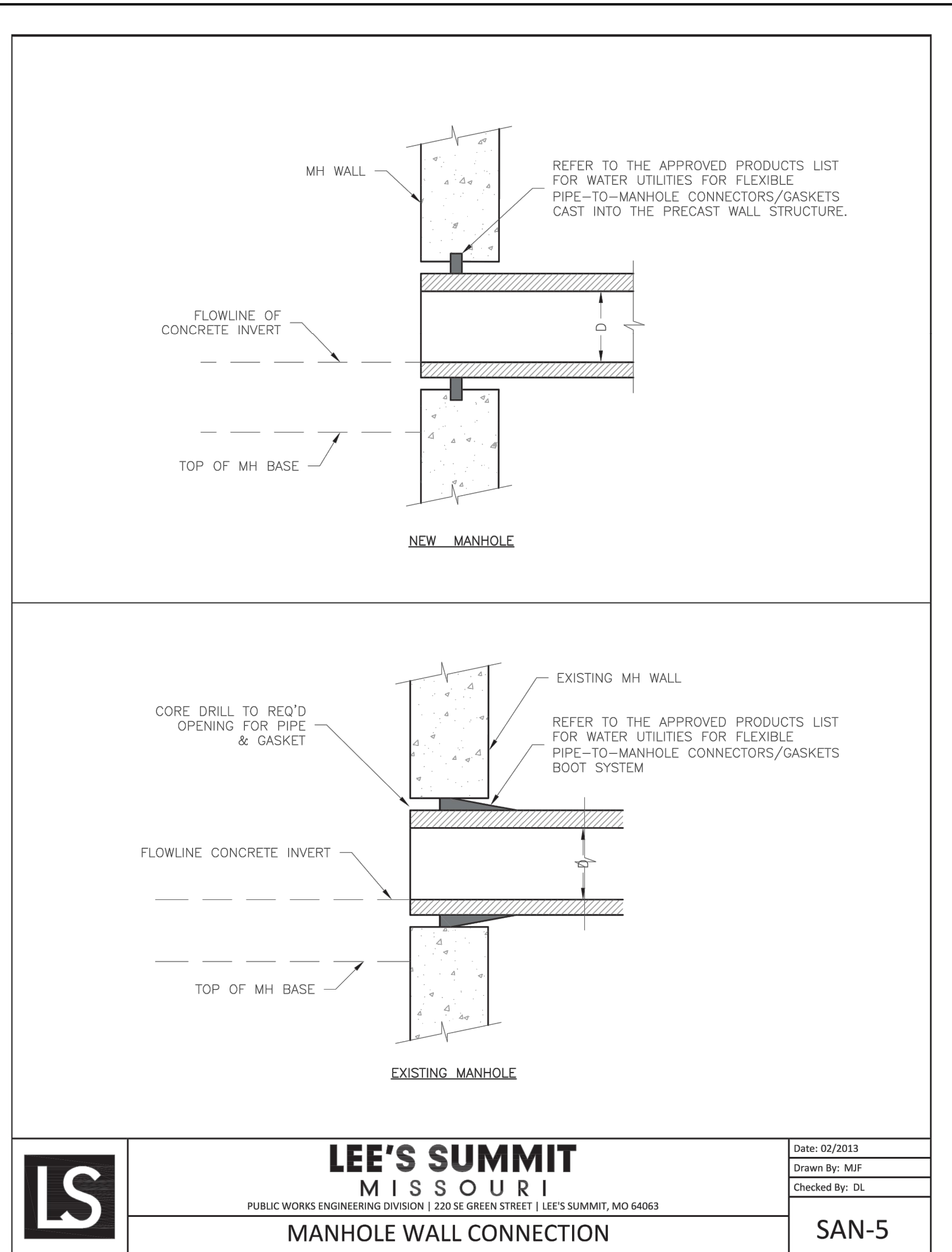
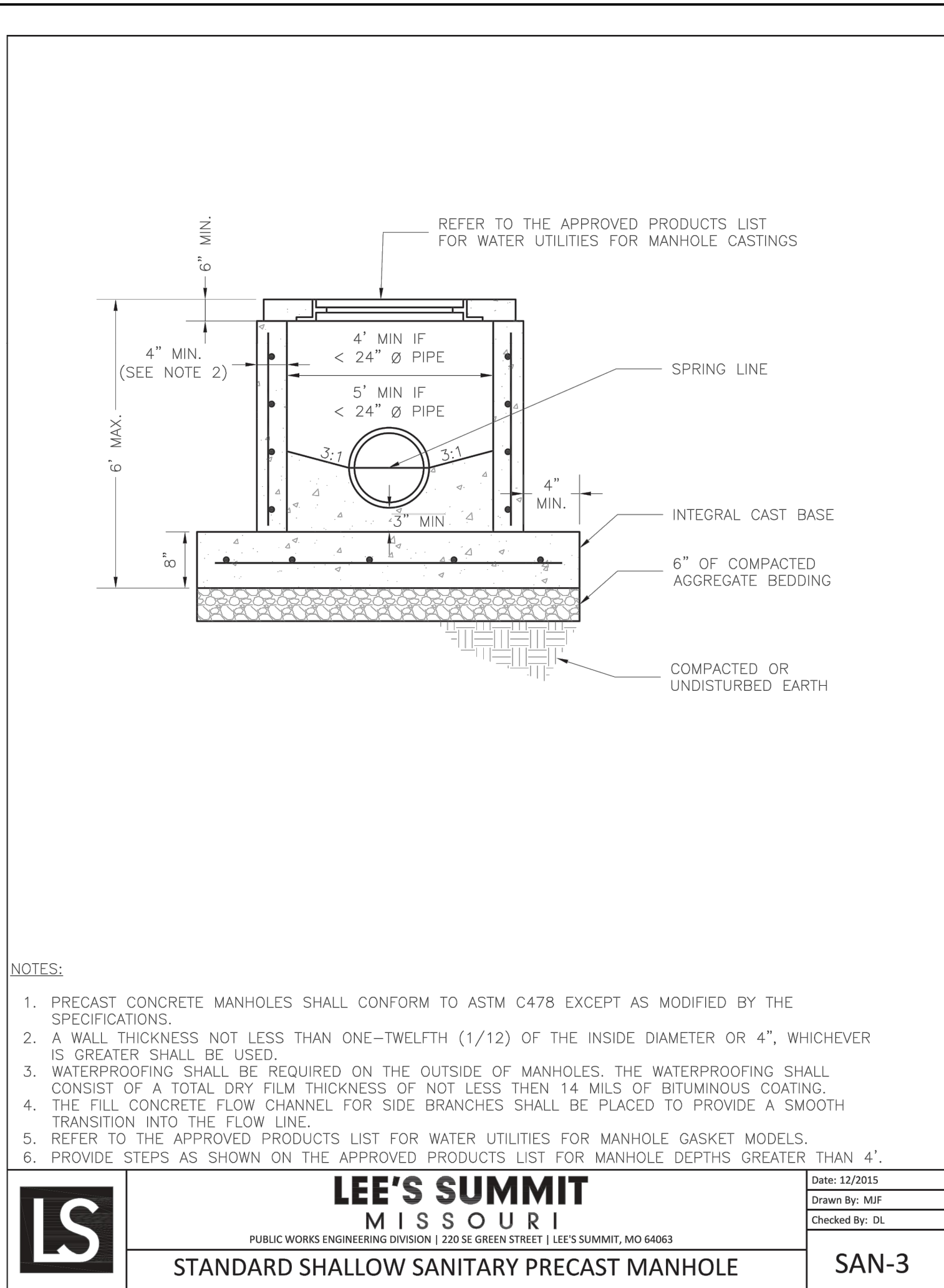
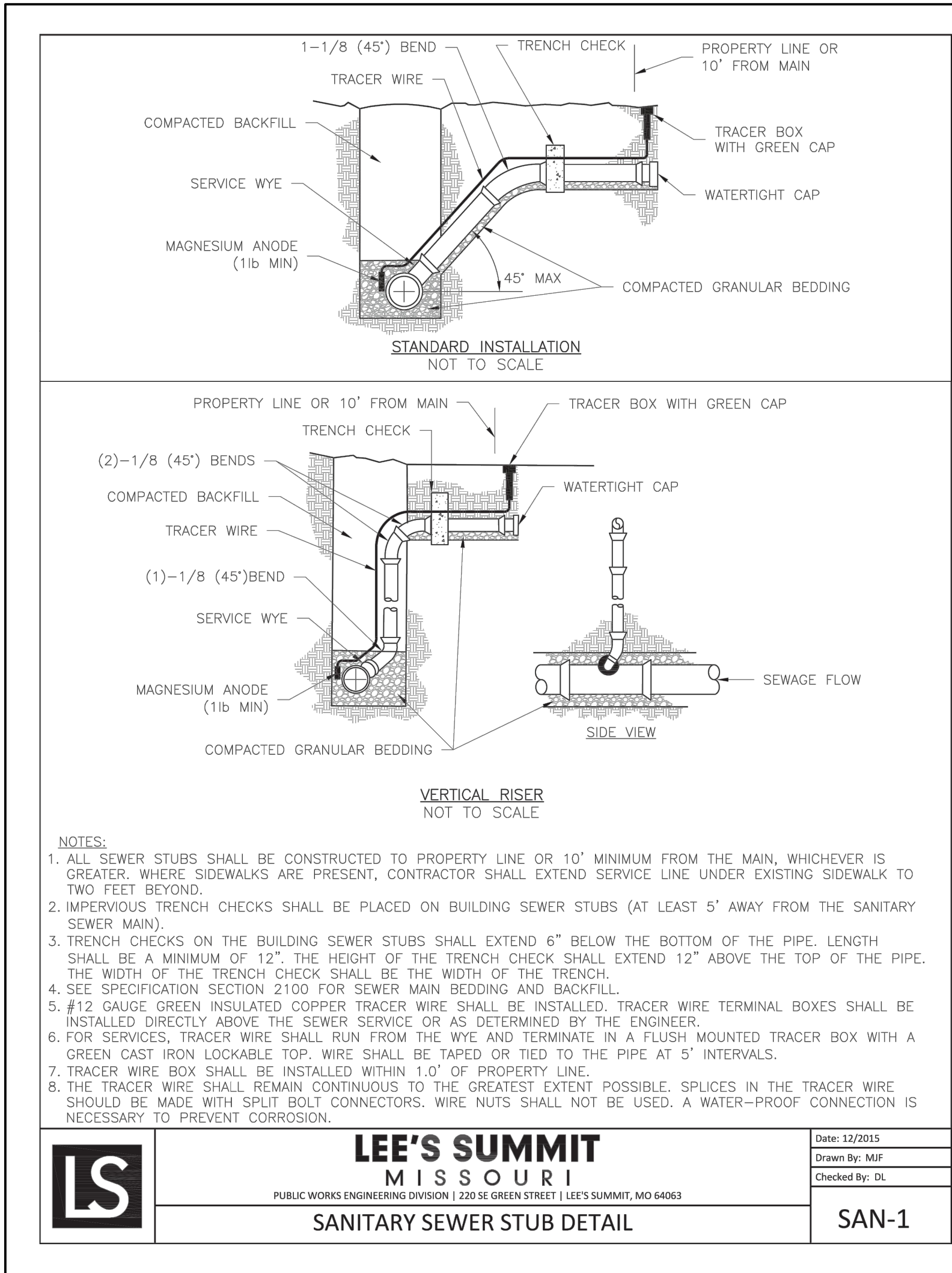
MANHOLE CONNECTION NOTE:

1. THE EXISTING MANHOLE WALL SHALL BE CORE DRILLED.
2. A FLEXIBLE PIPE-TO-MANHOLE CONNECTOR SHALL BE INSTALLED AS SHOWN IN THE STANDARD DRAWINGS.

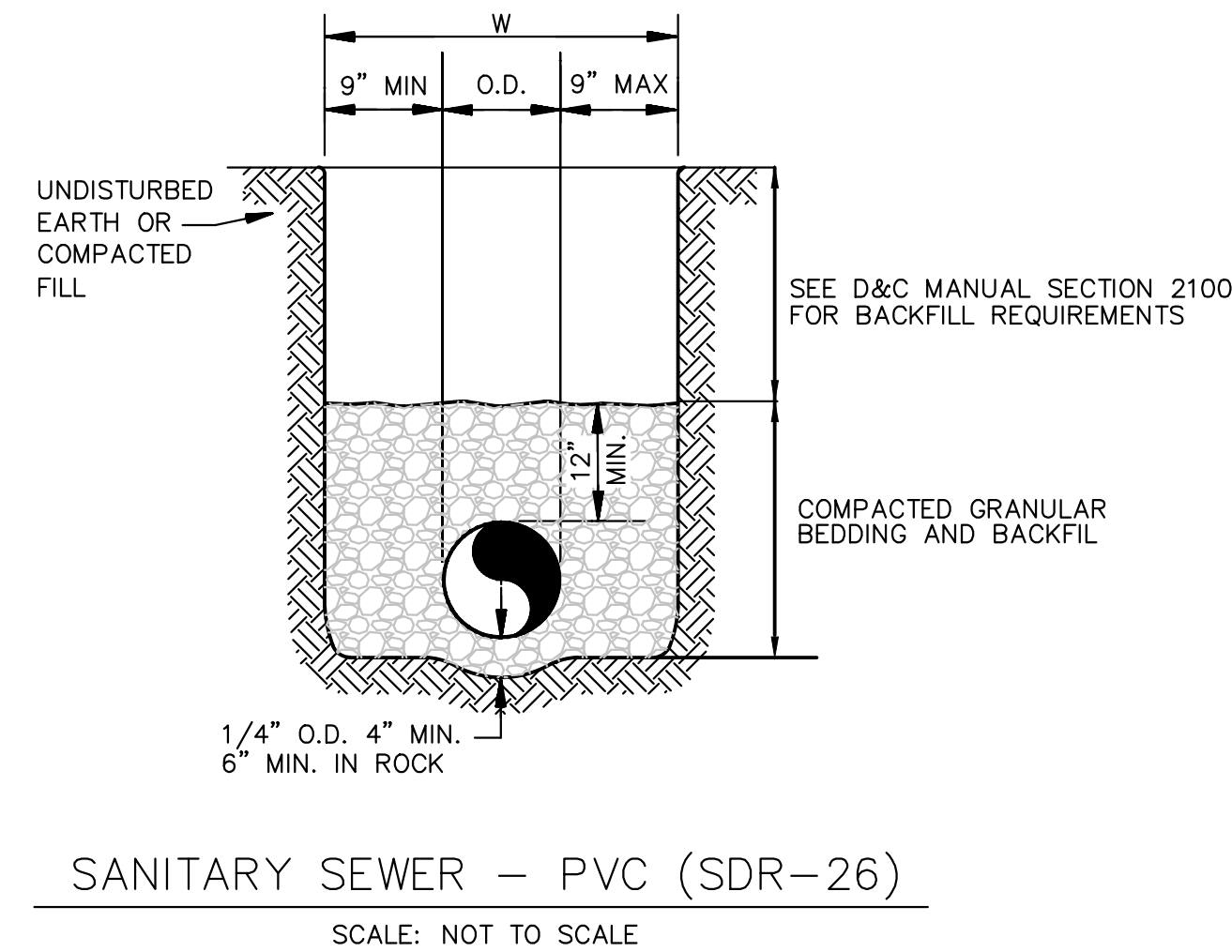




\\PHELPS-SERKER\Projects\210639\Sanitary Sewer Plans\SAN DETAILS.dwg Layout:DETAILS Mar 15, 2022 10:06pm Daniel Finn



STREET CUT RESTORATION DETAIL



PIPE INSTALLATION DETAIL



PHELPS ENGINEERING, INC.
1270 N. Winchester
Olathe, Kansas 66061
(913) 393-1155
Fax (913) 393-1166
www.phelpengineering.com

**PLANNING
ENGINEERING
IMPLEMENTATION**



SANITARY SEWER DETAILS
MARKET STREET CENTER
M291 AND SW MARKET STREET
CITY OF LEE'S SUMMIT, JACKSON COUNTY, MISSOURI

PROJECT NO.	210639	No.	Date	Revisions:	By	App.
DATE: 02-04-22	DRAWN BY: JDC	1.	03-15-2022	REVISED PER CITY COMMENTS	SNH	DAF
CHECKED: DAF	APPROVED: JDC					
DESIGNED: JDC	DATE OF AUTHORIZATION: 03-15-2022					
ENGINEER: JDC	EXPIRATION DATE: 03-15-2025					
CERTIFICATE OF AUTHORIZATION: MISSOURI ENGINEERING BOARD 200700238						

SHEET

SS-4

**RELEASED FOR
CONSTRUCTION**
As Noted on Plans Review
Development Services Department
Lee's Summit, Missouri
05/17/2022

