

Elevation Notes

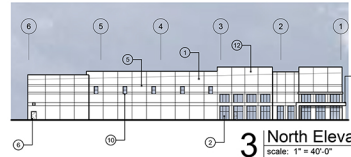
1. Install sand finish exterior grade paint over site cast, 8'-up wall construction
2. 1" steel glass in clear anod. alum. storefront frames
3. Detailed line represents sloped roof system by internal roof drain system
4. ERFI steel entry canopy over office corner
5. 2'x2' covered in conc. wall panel
6. Galvalume hollow metal roof deck & frame painted to match adjacent wall color
7. Segmented and insulated 12' x 14' overhead door painted to match adjacent wall color
8. Dock wet door and open grade steel stairs w/ handrail
9. Dock door painted to match adjacent wall color w/ dock bumpers, seal and leveler
10. 3" x 3" x 9' of galv. steel for warehouse skylighting
11. White TPO 0.45 mil over roof structure
12. Office panels to screen mechanical units
13. Future dock door locations
14. Painted wall with five wall supports on dock side to screen roof and equipment

Elevation Colors

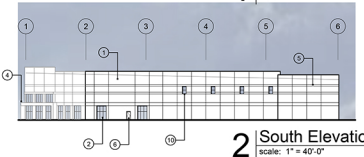
- SW 7053 Nebulous White
- SW 7054 Passive
- SW 7057 Cityscape
- SW 6992 Inkwell
- SW 6734 Espalier



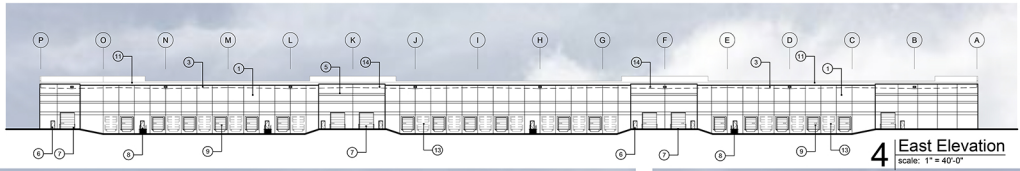
1 West Elevation
scale: 1" = 40'-0"



3 North Elevation
scale: 1" = 40'-0"



2 South Elevation
scale: 1" = 40'-0"



4 East Elevation
scale: 1" = 40'-0"



6 West Elevation Detail
scale: 3/32" = 1'-0"



5 East Elevation Detail
scale: 3/32" = 1'-0"

a new development for
Project Bailey
Lot 1, Pfizer Way
Lee's Summit, Missouri

date	04.05.2022
drawn by	DAE
checked by	DAE
revisions	
04.19.2022	1
05.02.2022	2
05.16.2022	3