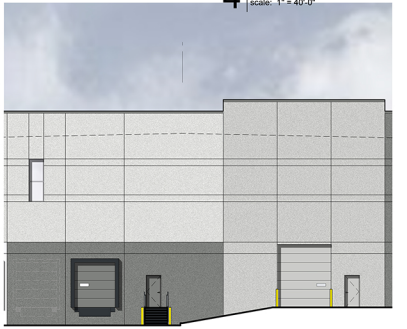


- Elevation Notes**
1. Remove sand finish exterior grade paint over site cast, 18-up wall construction
 2. 1" steel, glass in clear anod. alum. aluminum frames
 3. Dashed line represents sloped roof system by internal roof drain system
 4. 18" steel entry canopy over office corner
 5. 3/4" enamel in color, wall finish
 6. Galvalume finish metal dock doors - finish painted to match adjacent wall color
 7. Segmented and insulated 12' x 14' overhead door painted to match adjacent wall color
 8. Dock wall door and open grade and stairs as handrail
 9. Dock door painted to match adjacent wall color w/ dock bumpers, seal and lever
 10. 3' x 3' x 3" of eaves section for warehouse skylighting
 11. Painted walls with thru wall overflow scoopers on dock sides to screen roof and equipment
 12. Office parapets to screen mechanical units
 13. Future dock door locations
 14. Concrete tilt wall beam enclosure w/ perfor. mt. panel doors

- Elevation Colors**
- SW 7053 Nebulous White
 - SW 7054 Passive
 - SW 7057 Cityscape
 - SW 6992 Inkwell
 - SW 6734 Espalier



6 West Elevation Detail
scale: 3/32" = 1'-0"

5 South Elevation Detail
scale: 3/32" = 1'-0"

a new development for
Project Bailey
Lot 1, Pfizer Way
Lee's Summit, Missouri

data

04.05.2022	1
drawn by	
DAE	
checked by	
DAE	
revisions	
04.19.2022	1
05.02.2022	2
05.16.2022	3