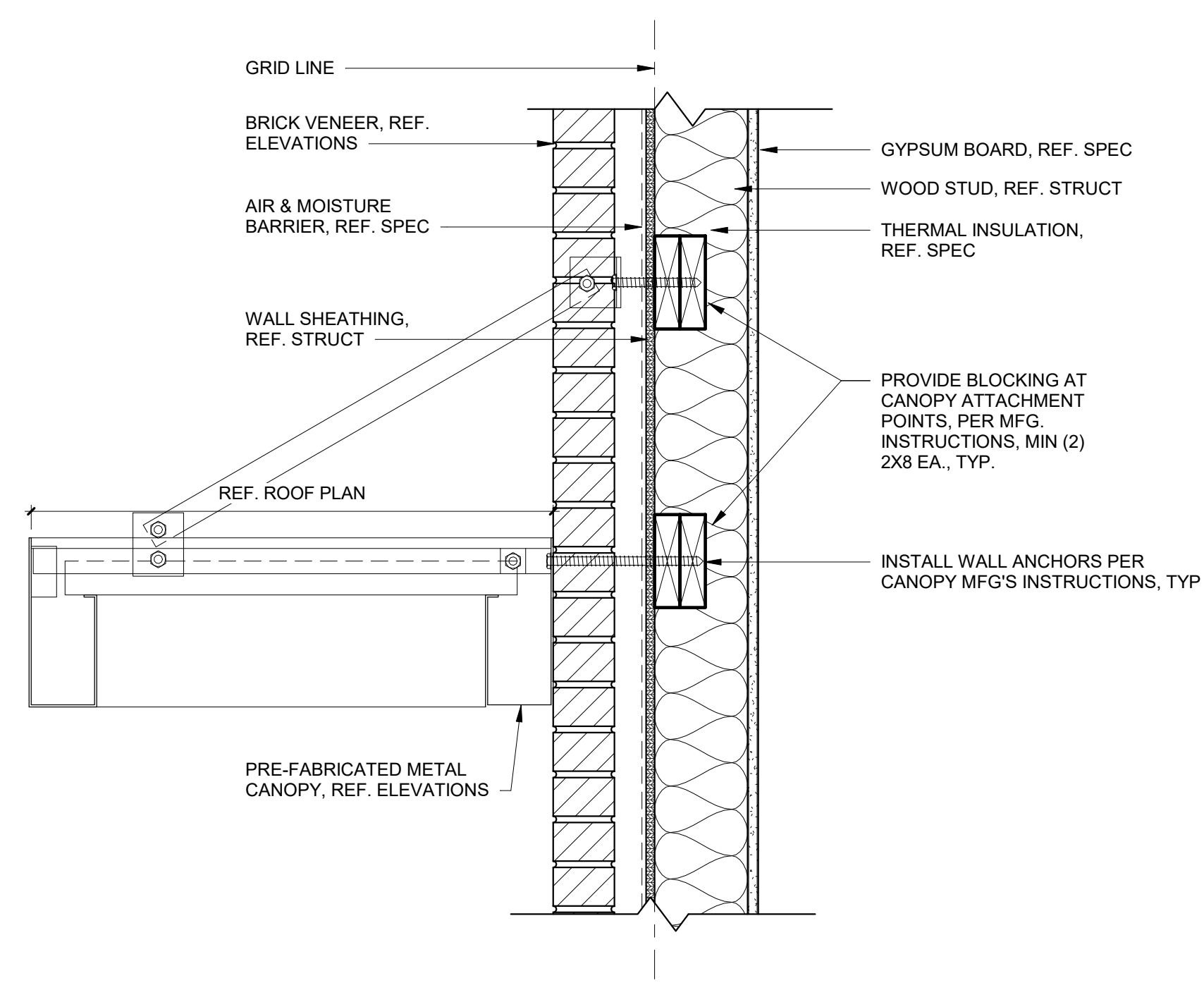
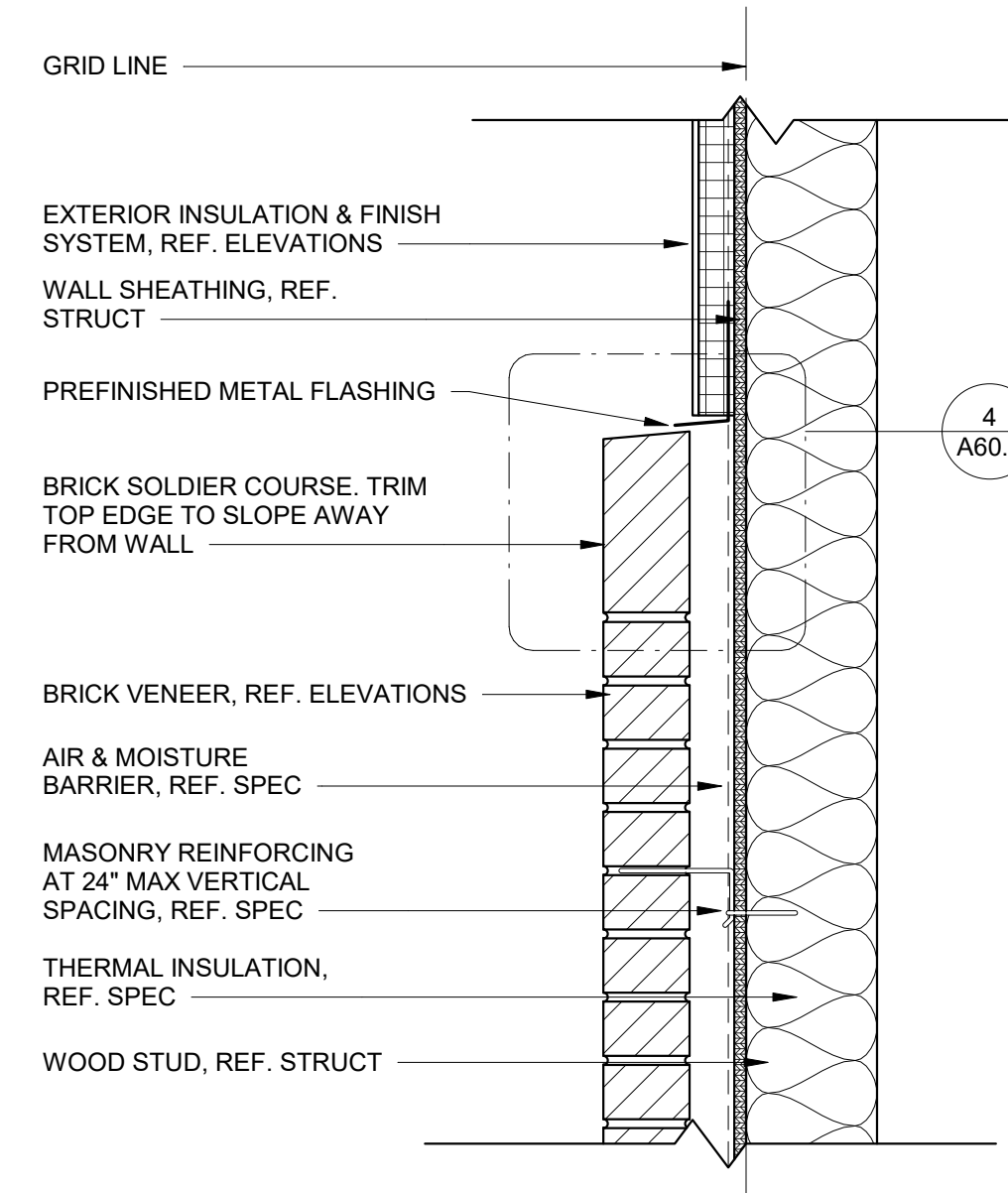


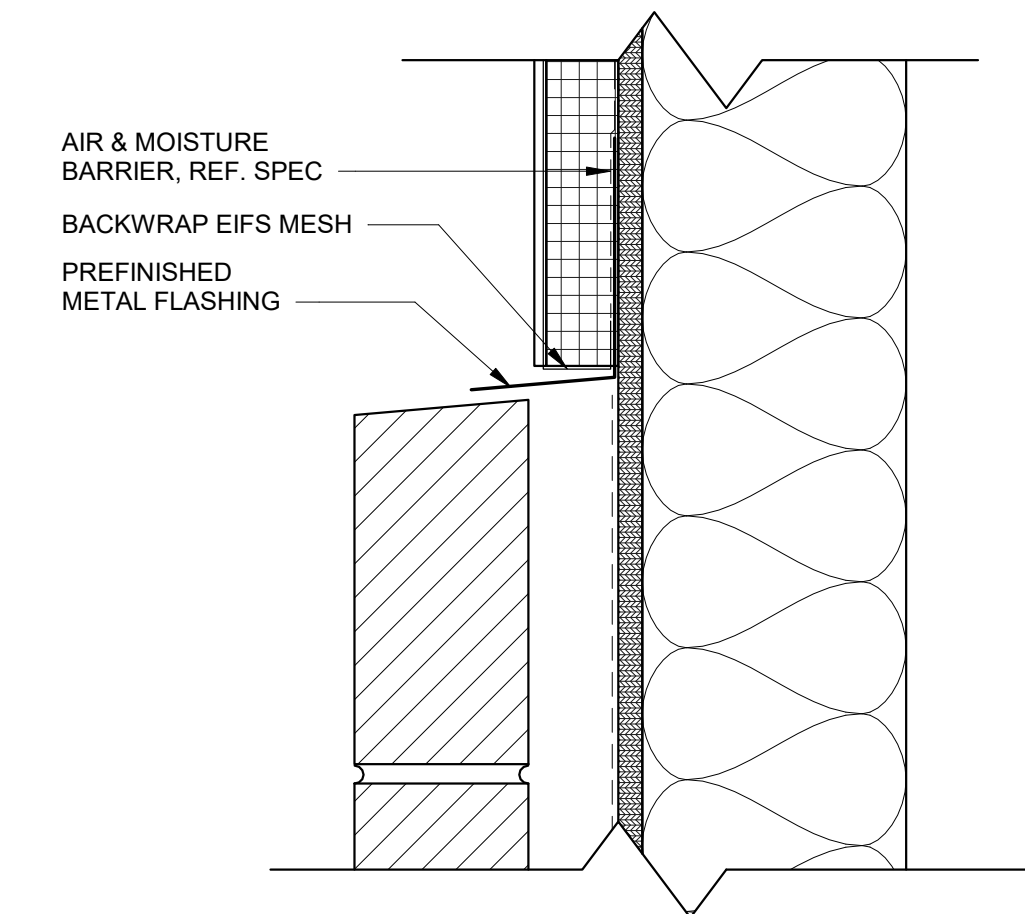
1 CANOPY @ EIFS
1 1/2" = 1'-0"



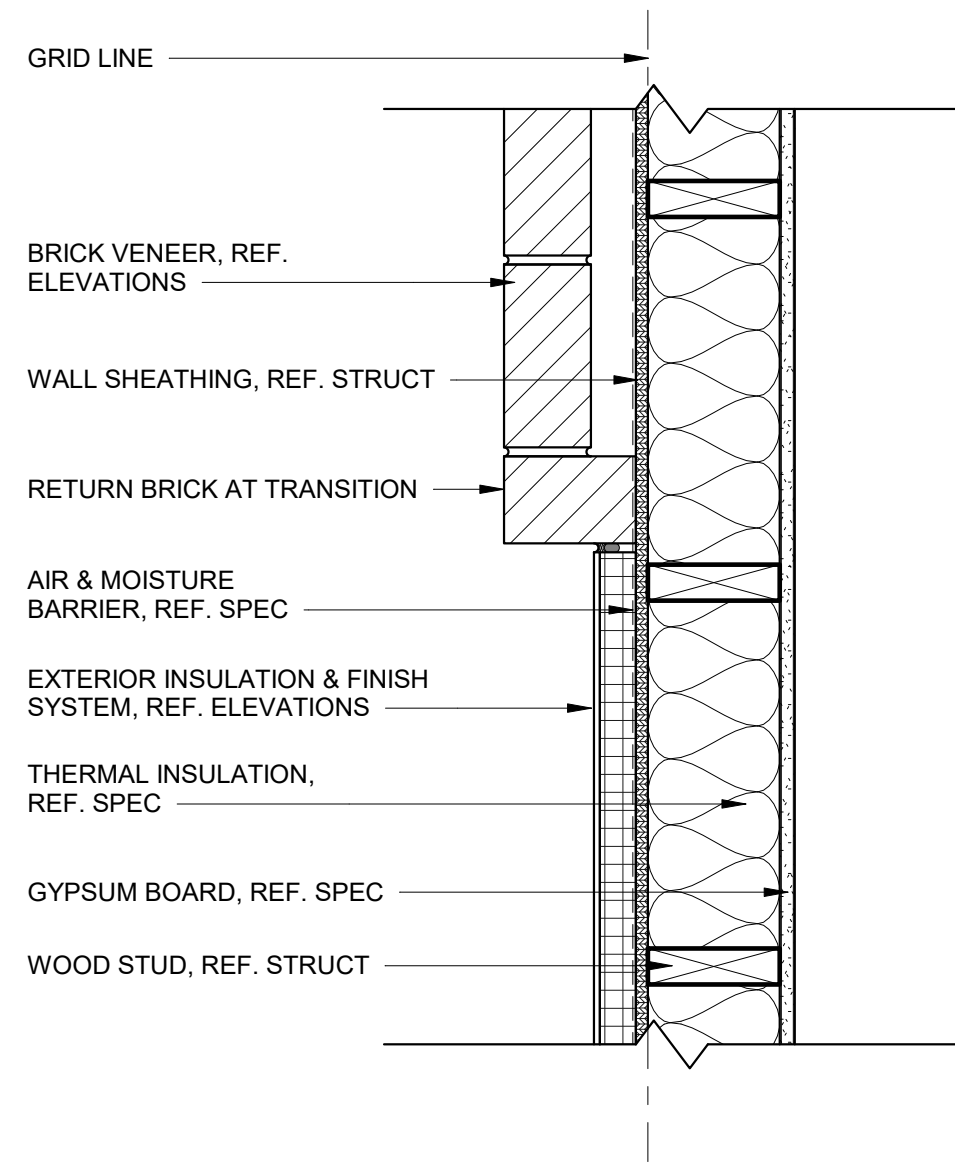
2 CANOPY @ BRICK
1 1/2" = 1'-0"



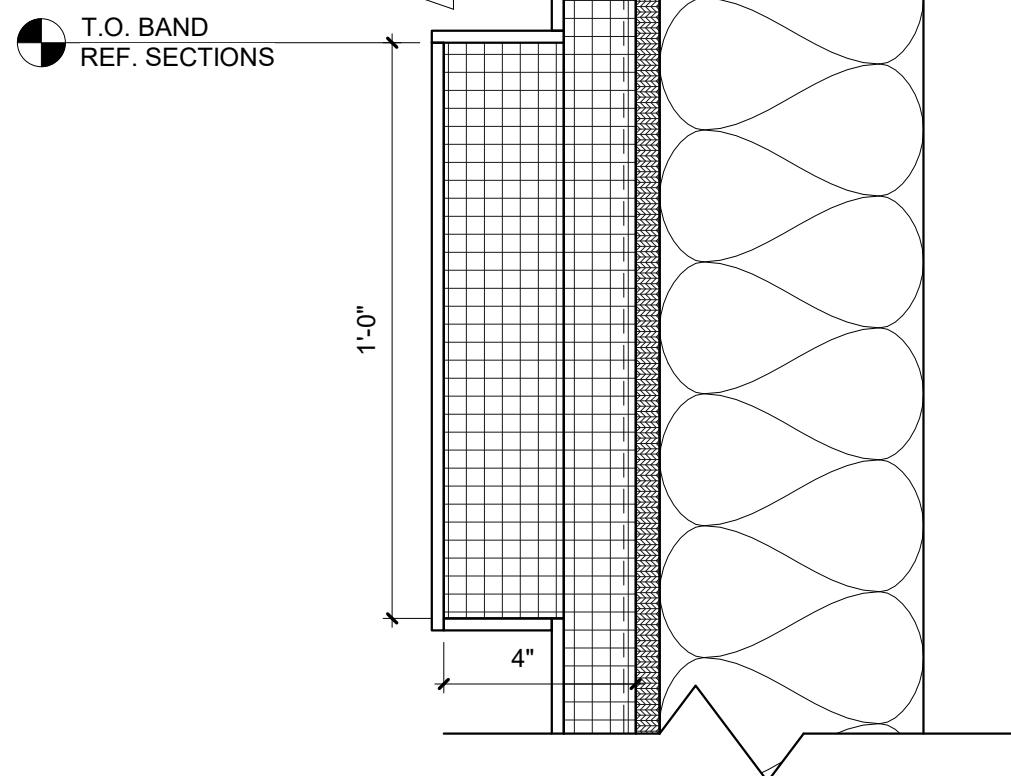
3 BRICK TO EIFS TRANSITION (SECTION)
1 1/2" = 1'-0"



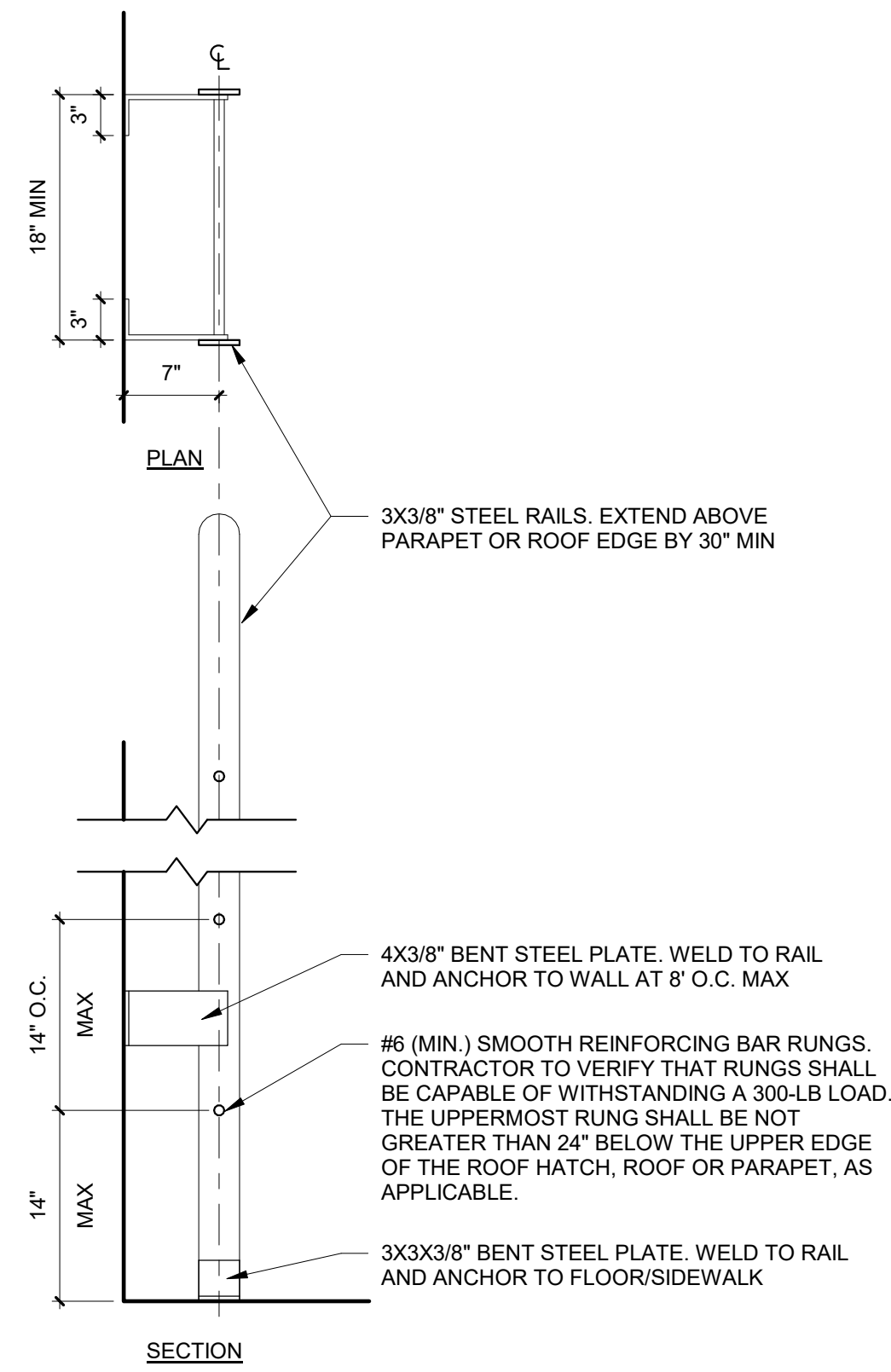
4 SOLDIER COURSE (ENLARGED)
3" = 1'-0"



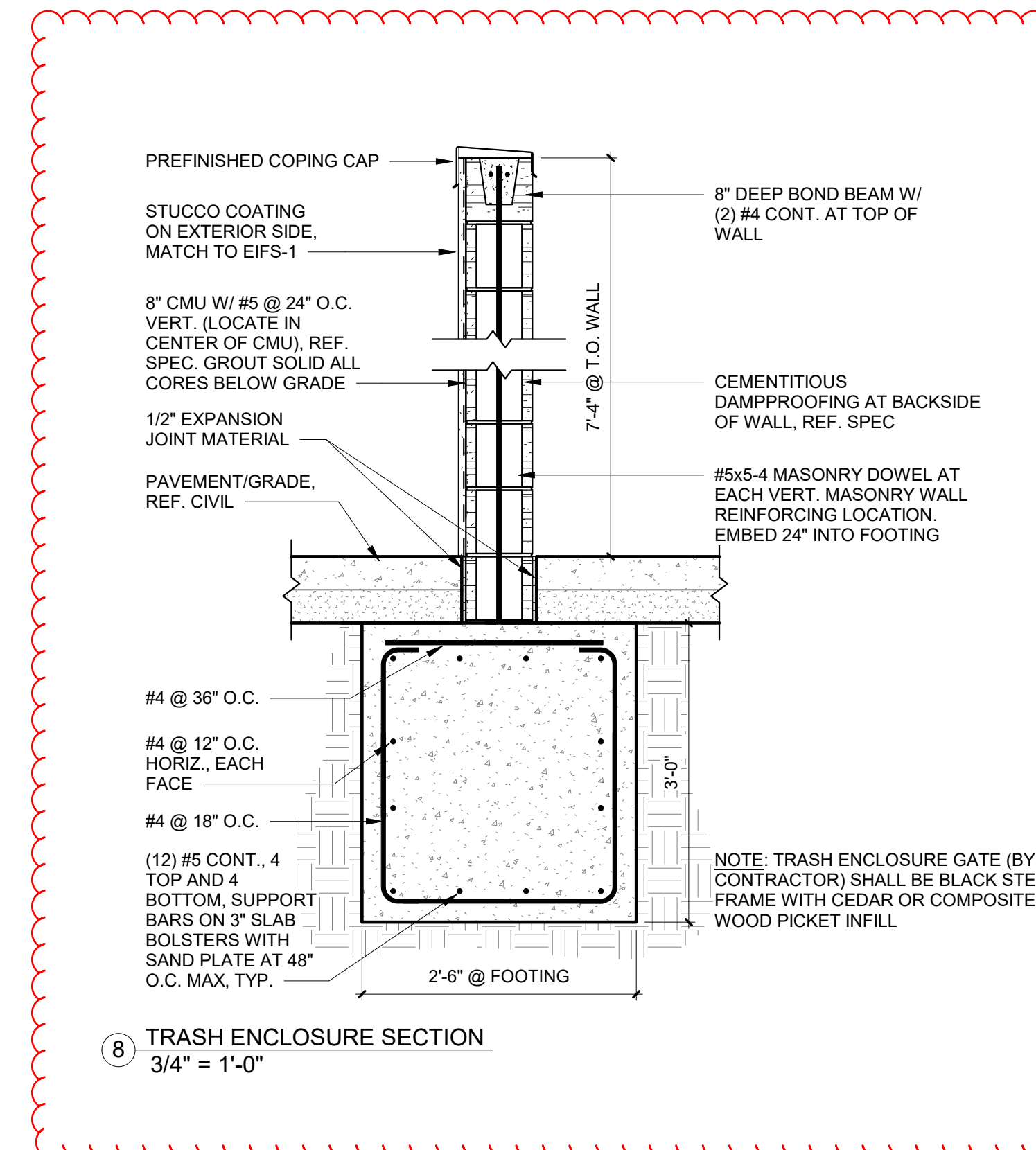
5 BRICK TO EIFS TRANSITION (PLAN)
1 1/2" = 1'-0"



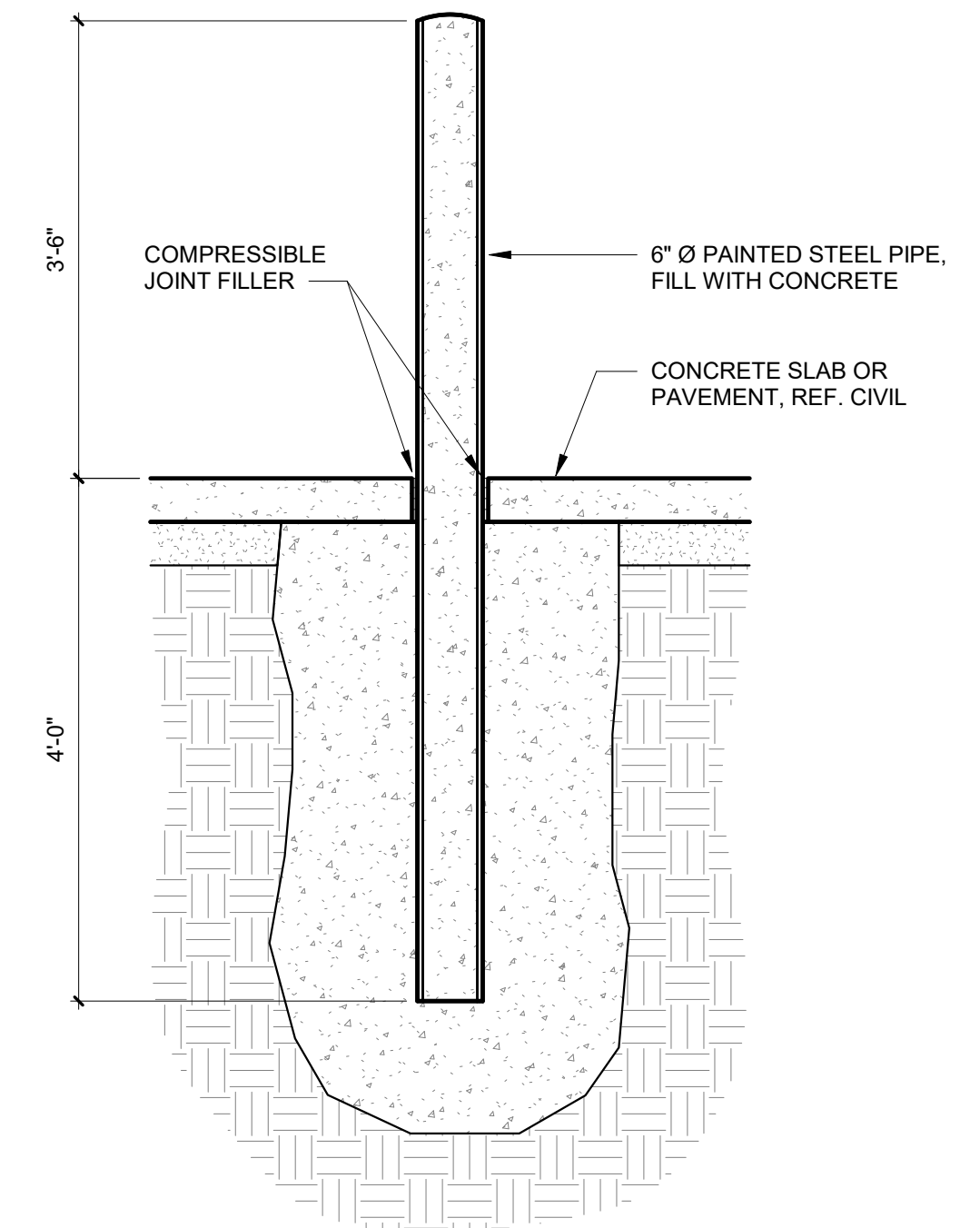
6 EIFS ACCENT BAND
3" = 1'-0"



7 ROOF ACCESS LADDER
1" = 1'-0"



8 TRASH ENCLOSURE SECTION
3/4" = 1'-0"



9 BOLLARD
3/4" = 1'-0"

PROJECT INFO
CLIENT:
COVENANT GROUP, LLC
PROJECT:
COVENANT GROUP - BUILDING SHELL - LEE'S SUMMIT, MO
ADDRESS:
400 NW CHIPMAN RD
LEE'S SUMMIT, MO 64806
PROJECT NO: 267
MAIN CONTACT
CHRISTOPHER CLARK, AIA, NCARB
7701 E KELLOGG DR, STE 630
WICHITA, KS 67207
(316) 302-4472
chris@clarkitecture.net

DEVELOPER
COVENANT REAL ESTATE GROUP
2480 PASSED VERDE Pkwy SUITE 405 | HENDERSON, NV 89074 | 714.845.8500

SHEET INFO

ISSUE DATE: 04/12/22
ISSUED FOR: INTERNAL REVIEW

REVISION SCHEDULE		
NO	DESCRIPTION	DATE

PROFESSIONAL'S SEAL:
STATE OF MISSOURI
CHRISTOPHER ALLEN
CLARK
NUMBER
A-2020014300
4/12/22
ARCHITECT