

PROJECT INFO

CLIENT:
COVENANT GROUP, LLC

PROJECT:
COVENANT GROUP - BUILDING SHELL - LEE'S SUMMIT, MO

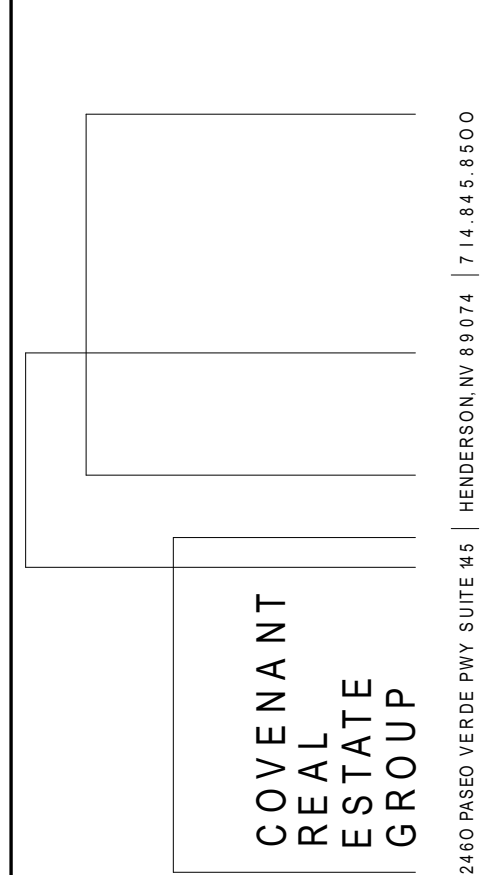
ADDRESS:
400 NW CHIPMAN RD
LEE'S SUMMIT, MO 64806

PROJECT NO.: 267

MAIN CONTACT

CHRISTOPHER CLARK, AIA, NCARB
7701 E KELLOGG DR, STE 630
WICHITA, KS 67207
(316) 302-4472
chris@clarkitecture.net

DEVELOPER



SHEET INFO

ISSUE DATE: 04/12/22
ISSUED FOR: INTERNAL REVIEW

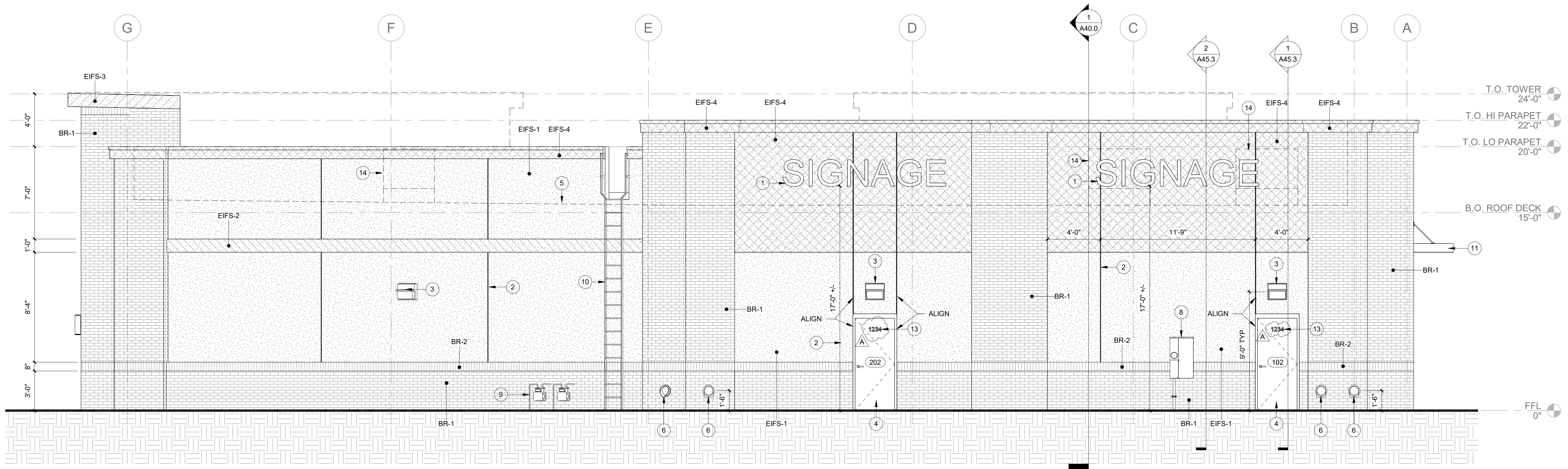
REVISION SCHEDULE

NO	DESCRIPTION	DATE
A	MISC CHANGES	05/05/22

PROFESSIONAL'S SEAL:



BUILDING ELEVATIONS



1 NORTH ELEVATION
1/4" = 1'-0"

GENERAL NOTES

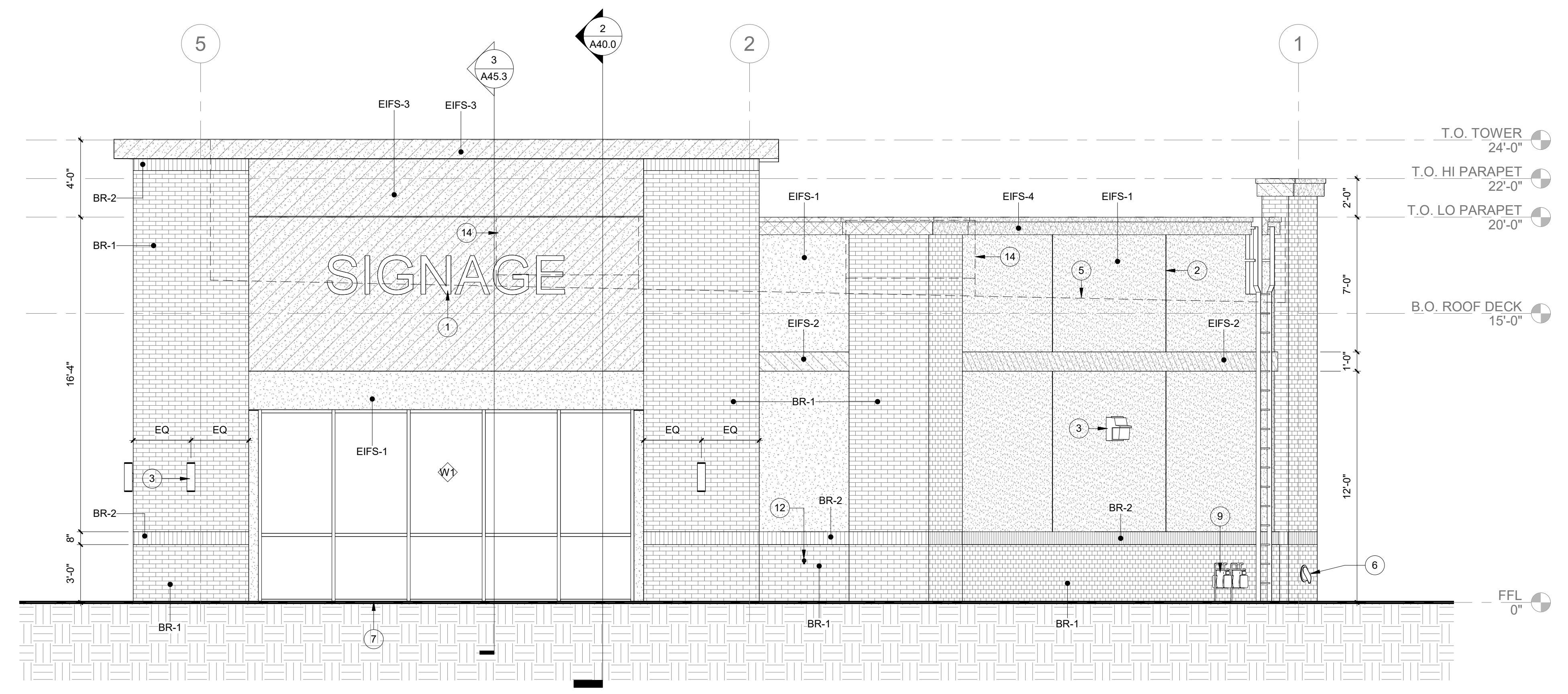
- CONTRACTOR TO VERIFY EXISTING SITE CONDITIONS. INFORM ARCHITECT OF ANY CONFLICT BETWEEN EXISTING CONDITIONS AND CONSTRUCTION DOCUMENTS PRIOR TO STARTING CONSTRUCTION.
- ALL DIMENSIONS ON THESE ELEVATIONS ARE MEASURED TO FINISHED FACE OF CONSTRUCTION, U.N.O.
- REF. SHEET A70.0 FOR DOOR SCHEDULE AND WINDOW TYPES.

KEYNOTE LEGEND

KEYNOTE	DESCRIPTION
1	BUILDING SIGNAGE, PROVIDE BLOCKING & POWER AS REQ'D. COORDINATE WITH TENANT
2	CONTROL JOINT, TYP.
3	LIGHT FIXTURE, TYP. REF. ELEC
4	DOOR, REF. FLOOR PLAN AND SCHEDULES
5	ROOF LINE (HIDDEN)
6	DOWNSPOUT NOZZLE, REF. MECH
7	STOREFRONT SYSTEM, REF. FLOOR PLAN AND SCHEDULES
8	ELECTRICAL SWITCHGEAR, REF. ELEC
9	GAS METER(S), REF. MECH
10	ROOF ACCESS LADDER, REF. DETAILS AND SPEC
11	PRE-FABRICATED METAL CANOPY
12	HOSE BIB, REF. MECH
13	PROVIDE ADDRESS NUMBERS AT ENTRANCE DOOR. NUMBERS SHALL BE ARABIC NUMERALS AND/OR ALPHABET LETTERS, MIN. 4" HIGH AND MIN. STROKE WIDTH 1/2"
14	ROOFTOP HVAC UNIT, REF. MECH

EXTERIOR FINISH LEGEND

- BR-1 BRICK VENEER**
- MFG: ENDICOTT
 - COLOR: EXECUTIVE IRONSPOT
 - SIZE: MODULAR
 - TEXTURE: TBD
 - EDGE: TBD
 - PATTERN: RUNNING BOND
 - MORTAR: TBD
- BR-2 BRICK VENEER**
- MFG: ENDICOTT
 - COLOR: EXECUTIVE IRONSPOT
 - SIZE: MODULAR
 - TEXTURE: TBD
 - EDGE: TBD
 - PATTERN: SOLDIER COURSE
 - MORTAR: TBD
- EIFS-1 EXTERIOR INSULATION & FINISH SYSTEM**
- COLOR: MATCH TO SHERWIN WILLIAMS SW 6385 "DOVER WHITE"
 - TEXTURE: FINE PEBBLE FINISH
 - SIZE: 1-1/2" (INSULATION THICKNESS)
- EIFS-2 EXTERIOR INSULATION & FINISH SYSTEM**
- COLOR: MATCH TO SHERWIN WILLIAMS SW 7048 "URBANE BRONZE"
 - TEXTURE: FINE PEBBLE FINISH
 - SIZE: 1-1/2" (INSULATION THICKNESS)
- EIFS-3 EXTERIOR INSULATION & FINISH SYSTEM**
- COLOR: MATCH TO SHERWIN WILLIAMS SW 6106 "NOMADIC DESERT"
 - TEXTURE: FINE PEBBLE FINISH
 - SIZE: 1-1/2" (INSULATION THICKNESS)
- EIFS-4 EXTERIOR INSULATION & FINISH SYSTEM**
- COLOR: MATCH TO SHERWIN WILLIAMS SW 6113 "INTERACTIVE CREAM"
 - TEXTURE: FINE PEBBLE FINISH
 - SIZE: 1-1/2" (INSULATION THICKNESS)
- MT-1 EXTERIOR GRADE METAL**
- RIGIDIZED METAL STAINLESS STEEL #4 SATIN
 - COLOR: DARK BRONZE
- CANOPIES**
- MFG: AWNEX
 - PRODUCT: "SEATTLE" OR "COLORADO"
 - COLOR: DARK BRONZE
 - SIZE: 8"
 - FACE: FLAT
 - STYLE: TIE-BACK



2 EAST ELEVATION
1/4" = 1'-0"

