

BCS Design, Inc.

A Full Service
Architectural Firm
WWW.BCSARCHITECTS.COM
19920 West 161st Street
Olathe, Kansas 66062
Phone: (913) 780-4820
Fax: (913) 780-5088

BUILDING TYPE A2-1 - 3 (24 2 BEDROOM UNITS)

Summit Point Apartments Phase II
504 NE Chipman Road
Lee's Summit, Missouri 64063



PROJECT NO. : 2021-08
DATE : 01.15.2022
DRAWN BY : BCS STAFF
REVIEWED BY :

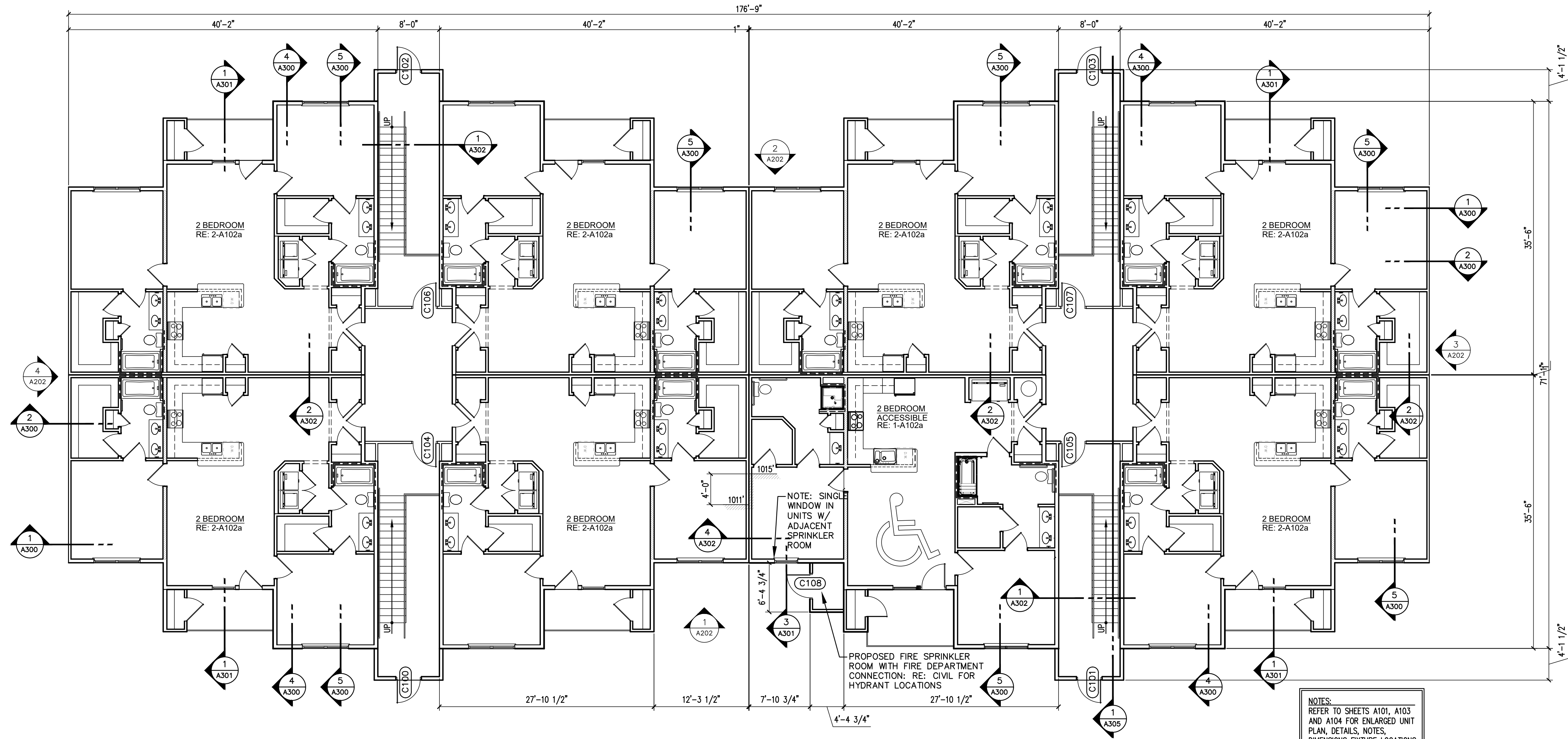
REVISED:

© BCS Design, Inc. 2022
This drawing is COPYRIGHTED work by BCS Design, Inc.
in either electronic or printed form. This drawing may not be
photographed, traced, copied or used in any manner without
the written permission of BCS Design, Inc.

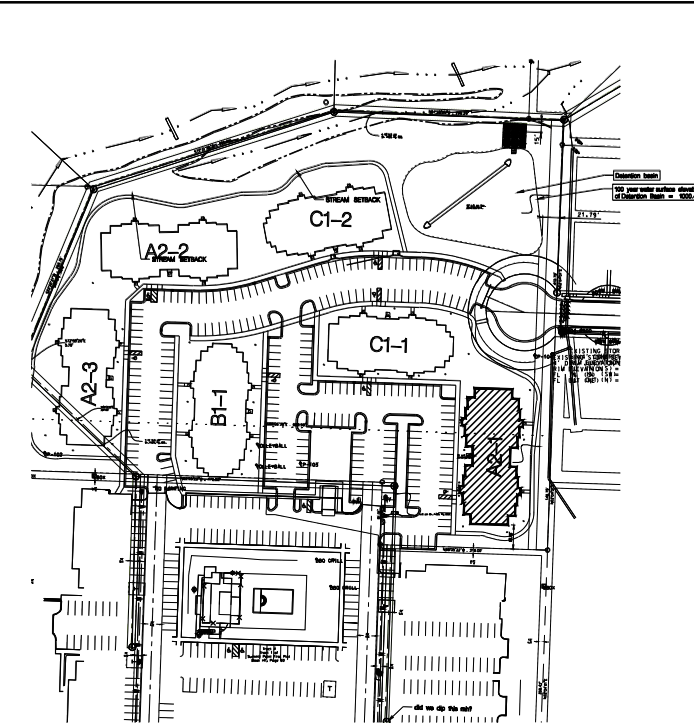
SHEET NO.

A104a

copyright © 2022

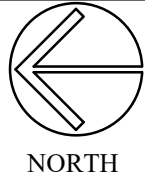


NOTES:
REFER TO SHEETS A101, A103
AND A104 FOR ENLARGED UNIT
PLAN, DETAILS, NOTES,
DIMENSIONS FUTURE LOCATIONS
FOR CORRIDOR & ENTRY DOORS
REFER TO SHEET A208 FOR
DOOR SCHEDULE

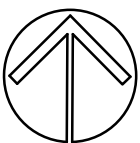


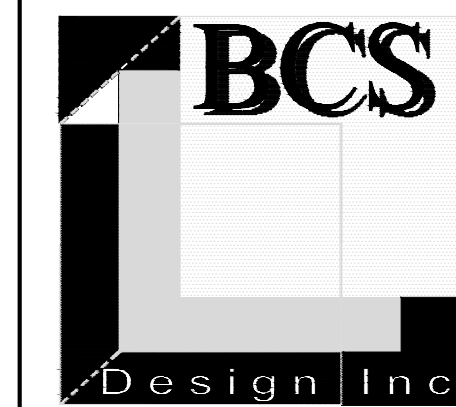
Permit Set

1 BUILDING A2-1 FIRST LEVEL - 3 STORY (24) 2 BEDROOM UNITS
1/8" = 1'-0" 11,300 S.F.



KEY PLAN





BCS Design, Inc.

A Full Service
Architectural Firm
WWW.BCSARCHITECTS.COM
19920 West 161st Street
Olathe, Kansas 66062
Phone: (913) 780-4820
Fax: (913) 780-5088

BUILDING TYPE A2-1 - 3 (24 2 BEDROOM UNITS)

Summit Point Apartments Phase II
504 NE Chipman Road
Lee's Summit, Missouri 64063



PROJECT NO. : 2021-08
DATE : 01.15.2022
DRAWN BY : BCS STAFF
REVIEWED BY :

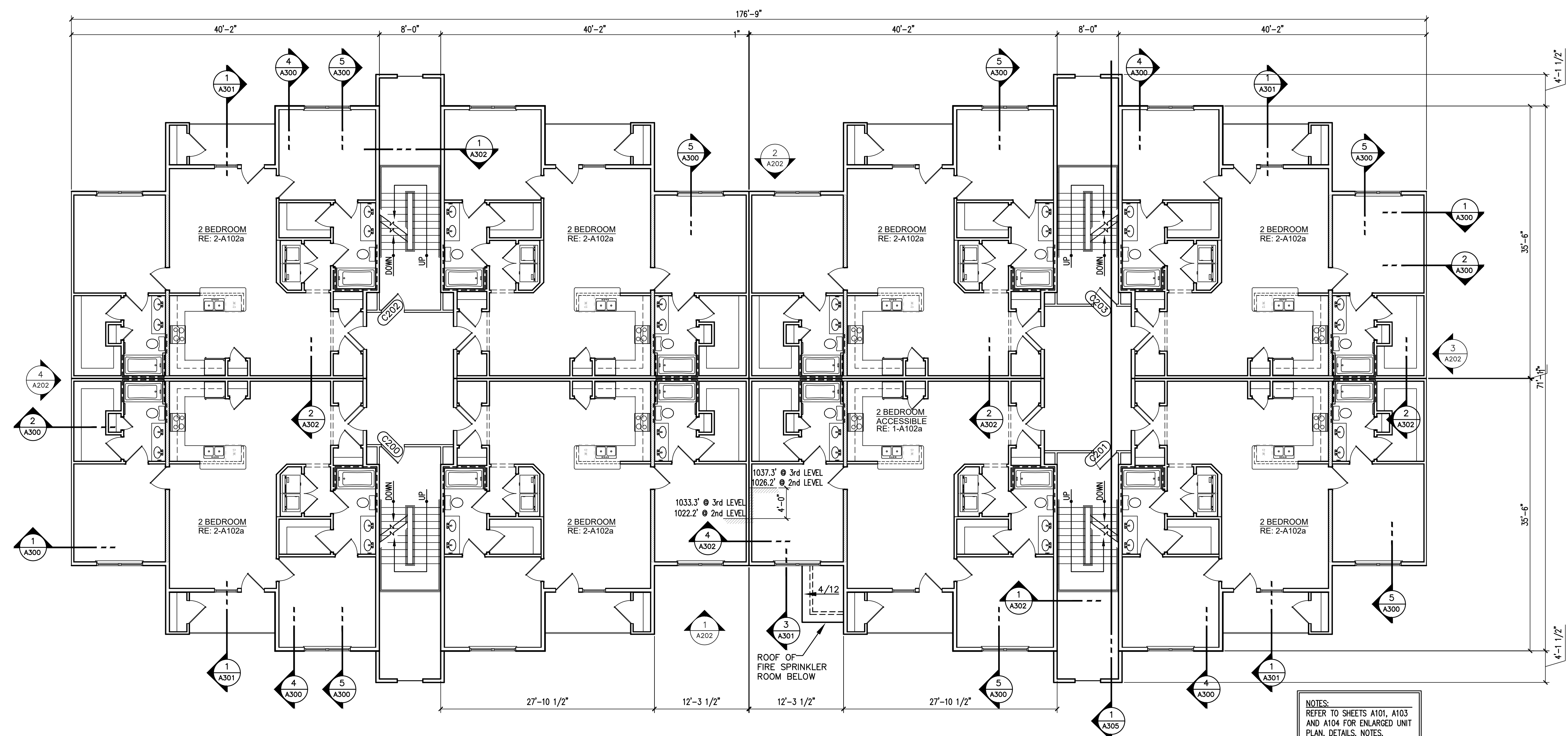
REVISED:

© BCS Design, Inc. 2022
This drawing is COPYRIGHTED work by BCS Design, Inc.
in either electronic or printed form. This drawing may not be
photographed, traced, printed or copied in any manner without
the written permission of BCS Design, Inc.

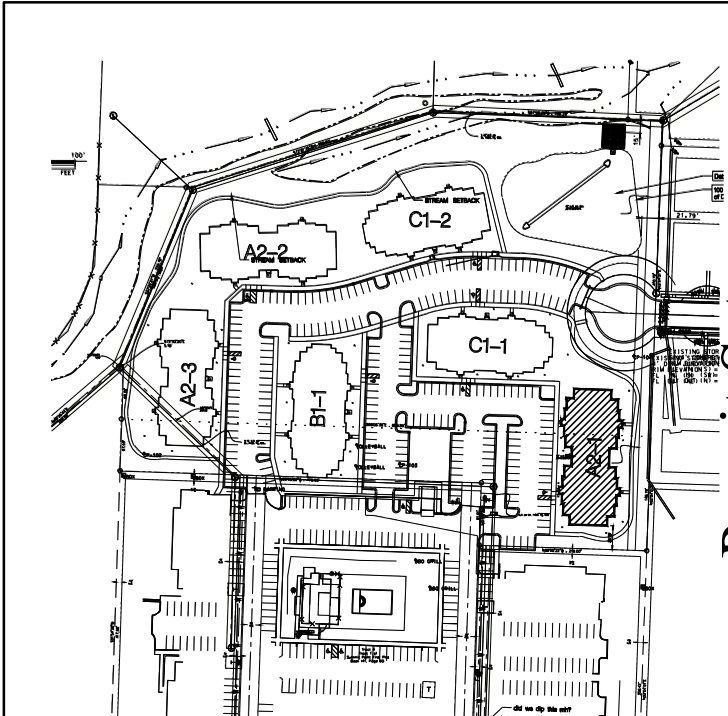
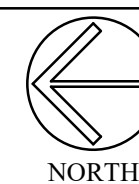
SHEET NO.

A104b

copyright © 2022



1 BUILDING A2-1 SECOND LEVEL (THIRD SIMILAR)
1/8" = 1'-0" 11,300 S.F.



KEY PLAN

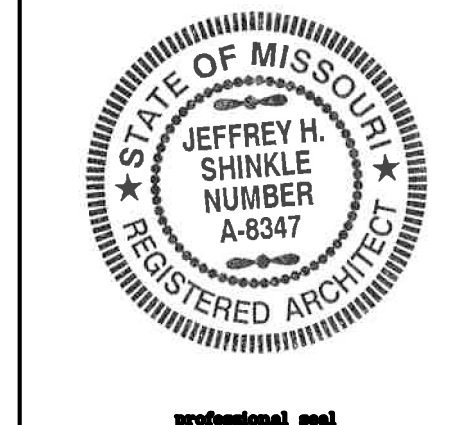


BCS Design, Inc.

A Full Service
Architectural Firm
WWW.BCSARCHITECTS.COM
19920 West 161st Street
Olathe, Kansas 66062
Phone: (913) 780-4820
Fax: (913) 780-5088

BUILDING TYPE A2-2 - 3 (24 2 BEDROOM UNITS)

Summit Point Apartments Phase II
504 NE Chipman Road
Lee's Summit, Missouri 64063



PROJECT NO. : 2021-08
DATE : 01.15.2022
DRAWN BY : BCS STAFF
REVIEWED BY :

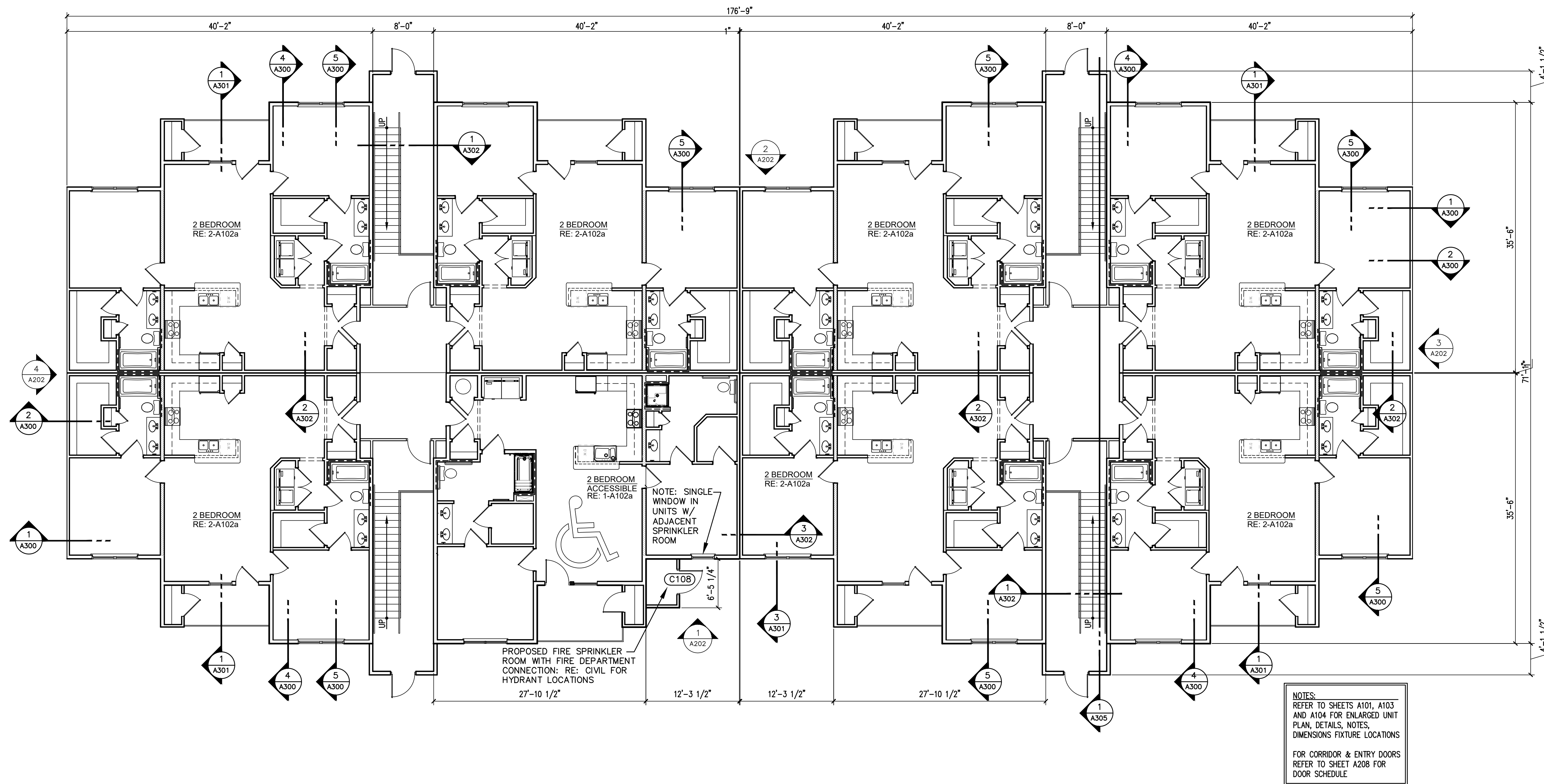
REVISED:

© BCS Design, Inc. 2022
This drawing is COPYRIGHTED work by BCS Design, Inc.
in either electronic or printed form. This drawing may not be
photographed, traced, copied or used in any manner without
the written permission of BCS Design, Inc.

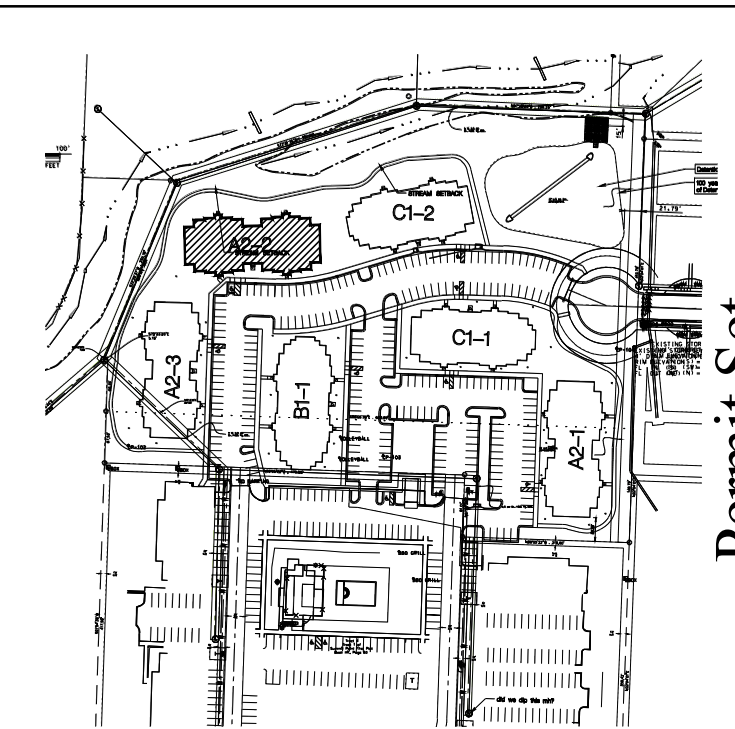
SHEET NO.

A105a

copyright © 2022



NOTES:
REFER TO SHEETS A101, A103
AND A104 FOR ENLARGED UNIT
PLAN, DETAILS, NOTES,
DIMENSIONS FUTURE LOCATIONS
FOR CORRIDOR & ENTRY DOORS
REFER TO SHEET A208 FOR
DOOR SCHEDULE



Permit Set

1 BUILDING A2-2 FIRST LEVEL - 3 STORY (24) 2 BEDROOM UNITS
1/8" = 1'-0" 11,300 S.F.



KEY PLAN





BCS Design, Inc.

A Full Service
Architectural Firm
WWW.BCSARCHITECTS.COM
19920 West 161st Street
Olathe, Kansas 66062
Phone: (913) 780-4820
Fax: (913) 780-5088

BUILDING TYPE A2-2 - 3 (24 2 BEDROOM UNITS)

Summit Point Apartments Phase II
504 NE Chipman Road
Lee's Summit, Missouri 64063



PROJECT NO. : 2021-08
DATE : 01.15.2022
DRAWN BY : BCS STAFF
REVIEWED BY :

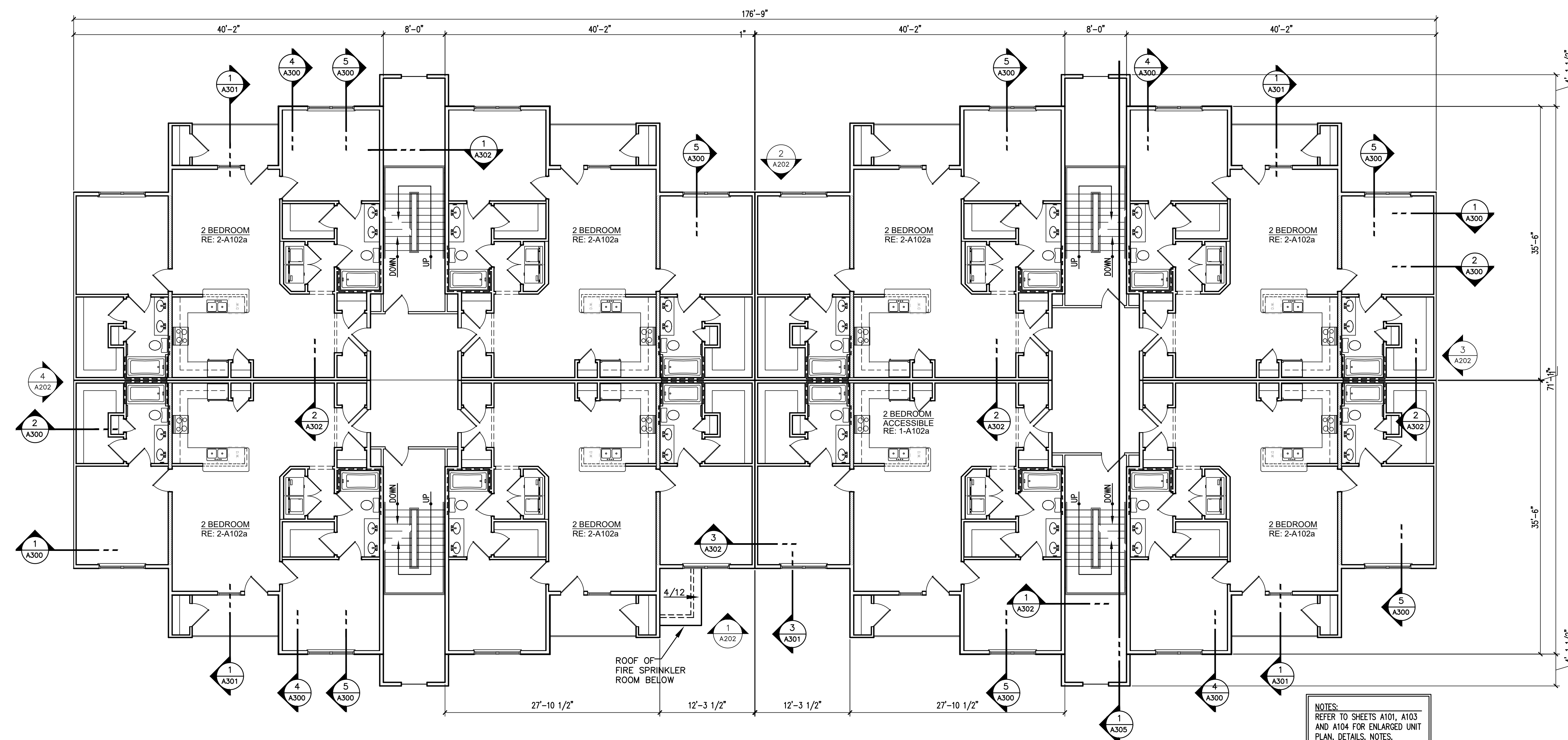
REVISED:

© BCS Design, Inc. 2022
This drawing is COPYRIGHTED work by BCS Design, Inc.
in either electronic or printed form. This drawing may not be
photographed, traced, copied or used in any manner without
the written permission of BCS Design, Inc.

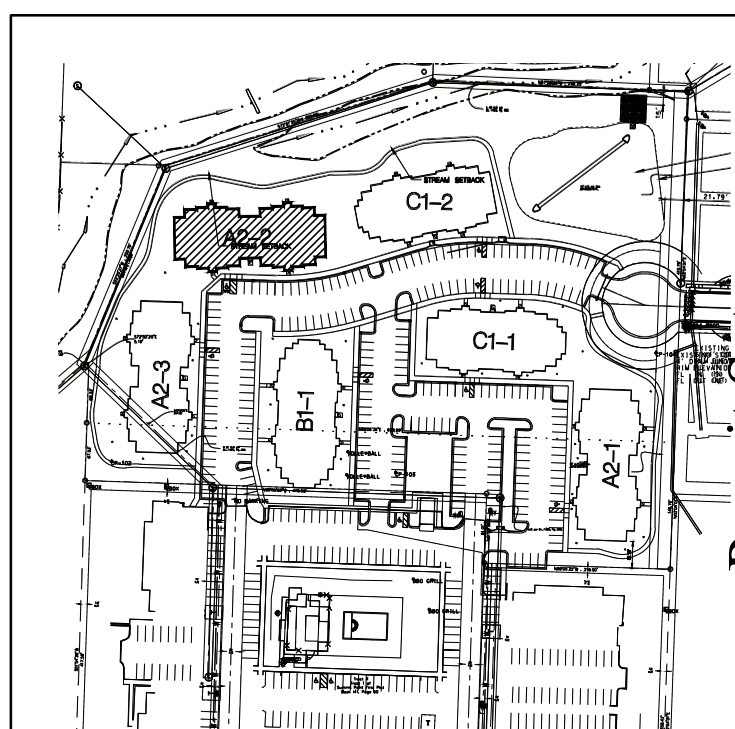
SHEET NO.

A105b

copyright © 2022



NOTES:
REFER TO SHEETS A101, A103
AND A104 FOR ENLARGED UNIT
PLAN, DETAILS, NOTES,
DIMENSIONS FIXTURE LOCATIONS
FOR CORRIDOR & ENTRY DOORS
REFER TO SHEET A208 FOR
DOOR SCHEDULE



KEY PLAN

1 BUILDING A2-2 SECOND LEVEL (THIRD SIMILAR)
1/8" = 1'-0"



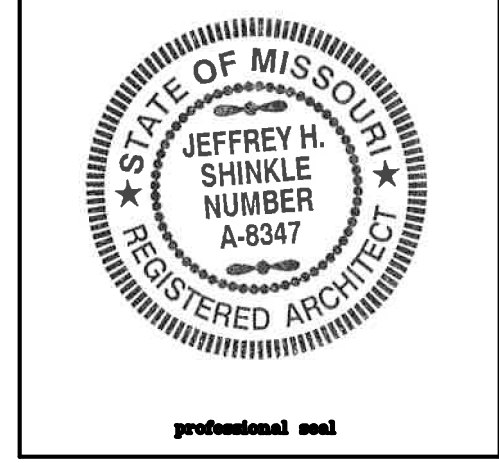


BCS Design, Inc.

A Full Service
Architectural Firm
WWW.BCSARCHITECTS.COM
19920 West 161st Street
Olathe, Kansas 66062
Phone: (913) 780-4820
Fax: (913) 780-5088

BUILDING TYPE A2-3 - 3 (24 2 BEDROOM UNITS)

Summit Point Apartments Phase II
504 NE Chipman Road
Lee's Summit, Missouri 64063



PROJECT NO. : 2021-08
DATE : 01.15.2022
DRAWN BY : BCS STAFF
REVIEWED BY :

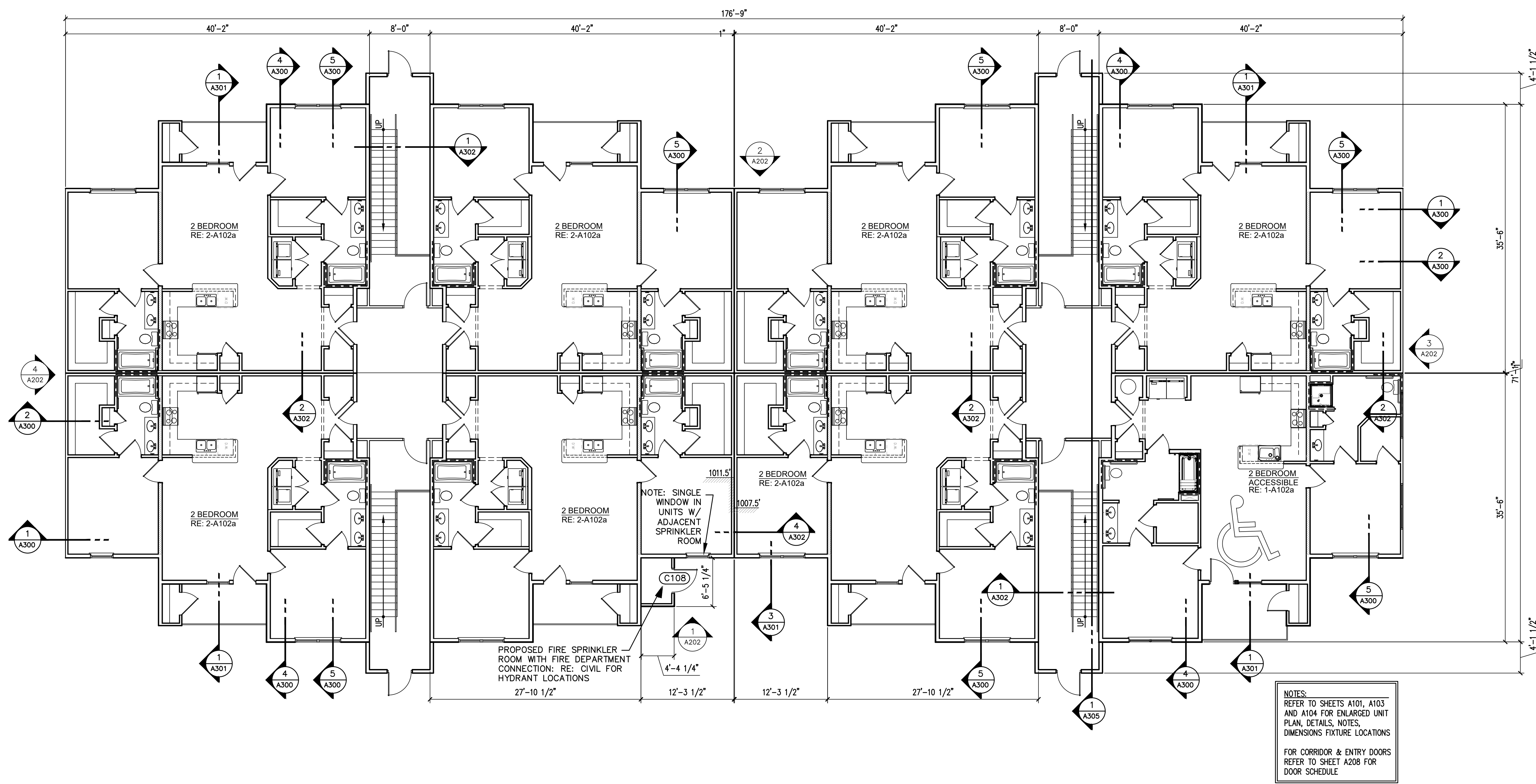
REVISED:

This drawing is COPYRIGHTED work by BCS Design, Inc. in either electronic or printed form. This drawing may not be photographed, traced, copied or used in any manner without the written permission of BCS Design, Inc.

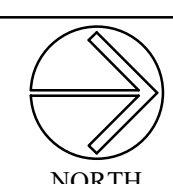
SHEET NO.

A106a

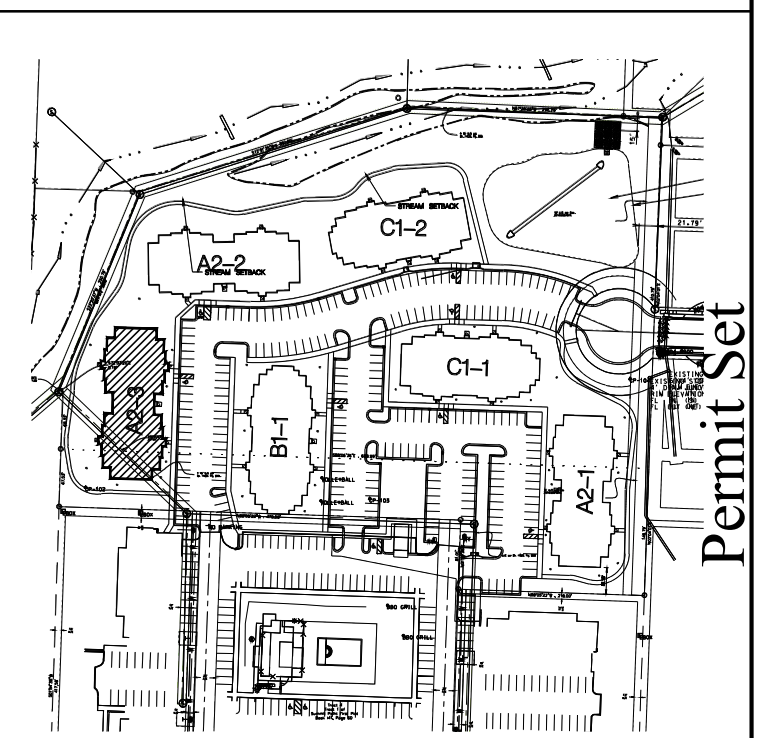
copyright © 2022



1 BUILDING A2-3 FIRST LEVEL - 3 STORY (24) 2 BEDROOM UNITS
1/8" = 1'-0" 11,300 S.F.



KEY PLAN





BCS Design, Inc.

A Full Service
Architectural Firm
WWW.BCSARCHITECTS.COM
19920 West 161st Street
Olathe, Kansas 66062
Phone: (913) 780-4820
Fax: (913) 780-5088

BUILDING TYPE A2-3 - 3 (24 2 BEDROOM UNITS)

Summit Point Apartments Phase II
504 NE Chipman Road
Lee's Summit, Missouri 64063



PROJECT NO. : 2021-08
DATE : 01.15.2022
DRAWN BY : BCS STAFF
REVIEWED BY :

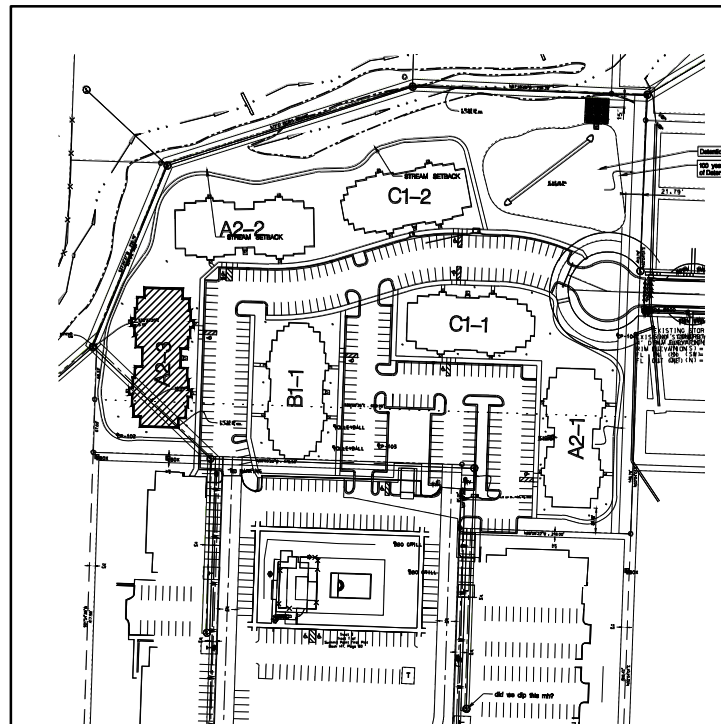
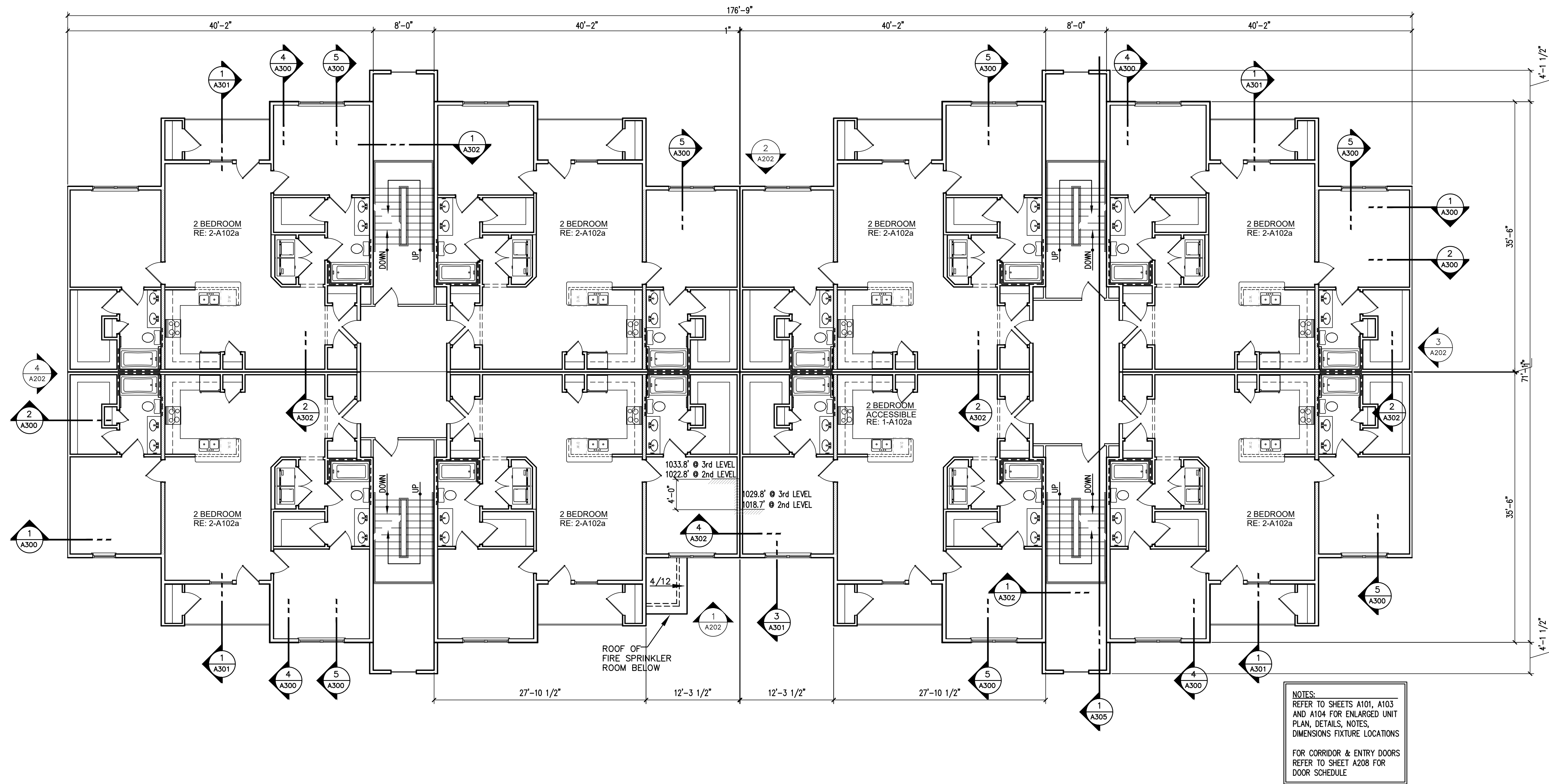
REVISED:

© BCS Design, Inc. 2022
This drawing is COPYRIGHTED work by BCS Design, Inc.
in either electronic or printed form. This drawing may not be
photographed, traced, copied or used in any manner without
the written permission of BCS Design, Inc.

SHEET NO.

A106b

copyright © 2022



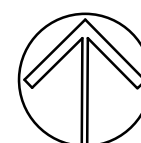
Permit Set

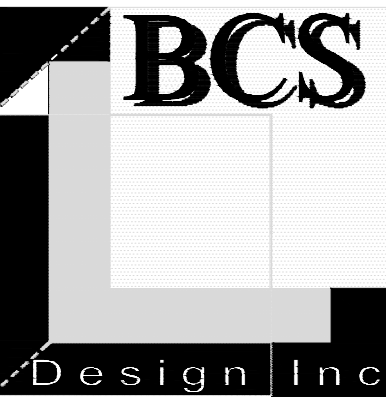
1 BUILDING A2-3 SECOND LEVEL (THIRD SIMILAR)

1/8" = 1'-0"



KEY PLAN





BCS Design, Inc.

A Full Service
Architectural Firm
WWW.BCSARCHITECTS.COM
19920 West 161st Street
Olathe, Kansas 66062
Phone: (913) 780-4820
Fax: (913) 780-5088

BUILDING TYPE B1-1 - (12) 3BEDROOM UNITS (12) 1 BEDROOM UNITS

Summit Point Apartments Phase II
504 NE Chipman Road
Lee's Summit, Missouri 64063



PROJECT NO. : 2021-08
DATE : 01.15.2022
DRAWN BY : BCS STAFF
REVIEWED BY :

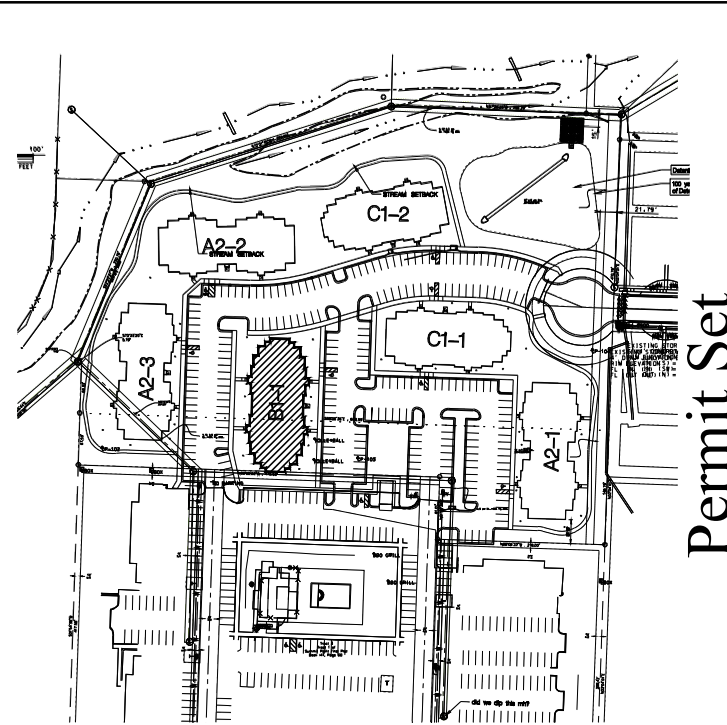
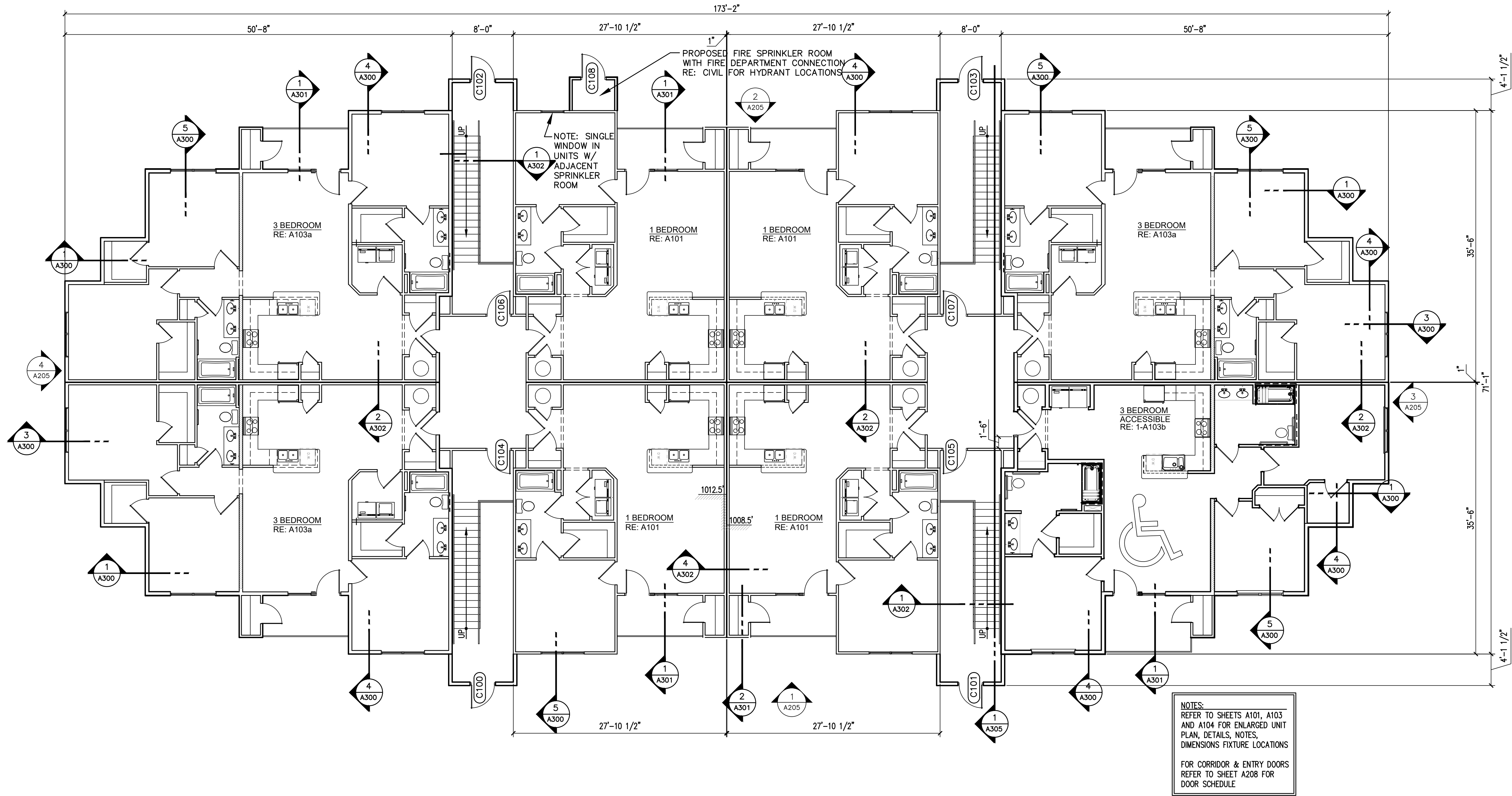
REVISED:

This drawing is COPYRIGHTED work by BCS Design, Inc.
in either electronic or printed form. This drawing may not be
photographed, traced, copied or used in any manner without
the written permission of BCS Design, Inc.

SHEET NO.

A107a

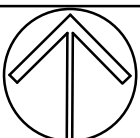
copyright © 2022

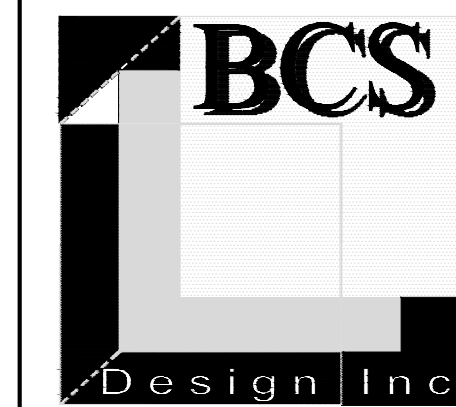


1 BUILDING B1-1 FIRST LEVEL; 3 STORY (12) 3 BEDROOM UNITS (12) 1 BEDROOM UNITS
1/8" = 1'-0" 10,500 SQUARE FEET



KEY PLAN



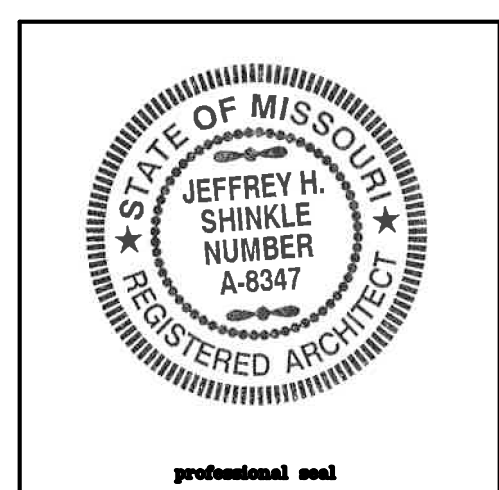


BCS Design, Inc.

A Full Service
Architectural Firm
WWW.BCSARCHITECTS.COM
19920 West 161st Street
Olathe, Kansas 66062
Phone: (913) 780-4820
Fax: (913) 780-5088

BUILDING TYPE B1-1 - (12) 3BEDROOM UNITS (12) 1 BEDROOM UNITS

Summit Point Apartments Phase II
504 NE Chipman Road
Lee's Summit, Missouri 64063



PROJECT NO. : 2021-08
DATE : 01.15.2022
DRAWN BY : BCS STAFF
REVIEWED BY :

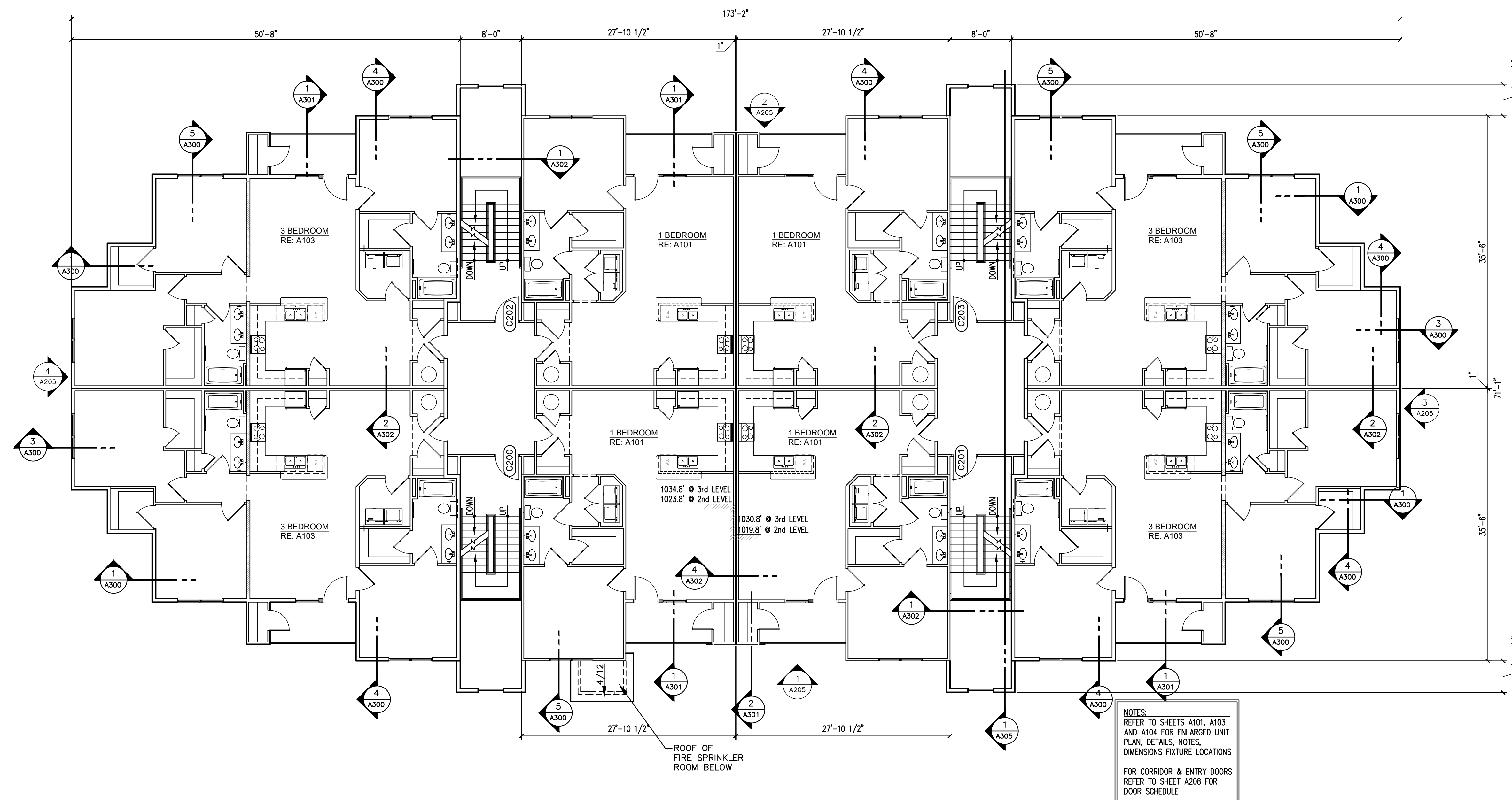
REVISED:

© BCS Design, Inc. 2022
This drawing is COPYRIGHTED work by BCS Design, Inc.
in either electronic or printed form. This drawing may not be
photographed, traced, copied or used in any manner without
the written permission of BCS Design, Inc.

SHEET NO.

A107b

copyright © 2022

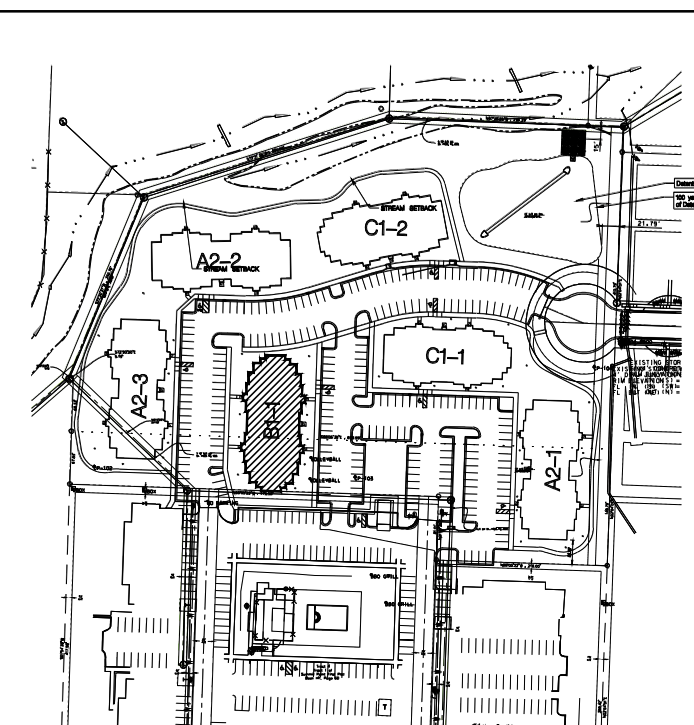
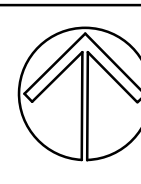


1 BUILDING B1-1 SECOND LEVEL (THIRD LEVEL SIMILAR)

1/8" = 1'-0"



KEY PLAN



Permit Set

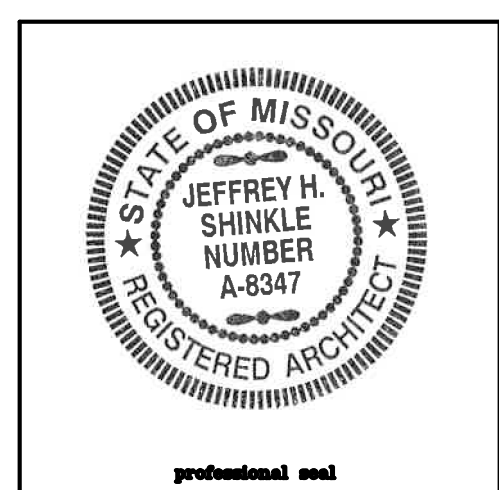


BCS Design, Inc.

A Full Service
Architectural Firm
WWW.BCSARCHITECTS.COM
19920 West 161st Street
Olathe, Kansas 66062
Phone: (913) 780-4820
Fax: (913) 780-5088

BUILDING TYPE C - (12) 1 BEDROOM UNITS (6) 2 BEDROOM (6) 3 BEDROOM

Summit Point Apartments Phase II
504 NE Chipman Road
Lee's Summit, Missouri 64063



PROJECT NO. : 2021-08
DATE : 01.15.2022
DRAWN BY : BCS STAFF
REVIEWED BY :

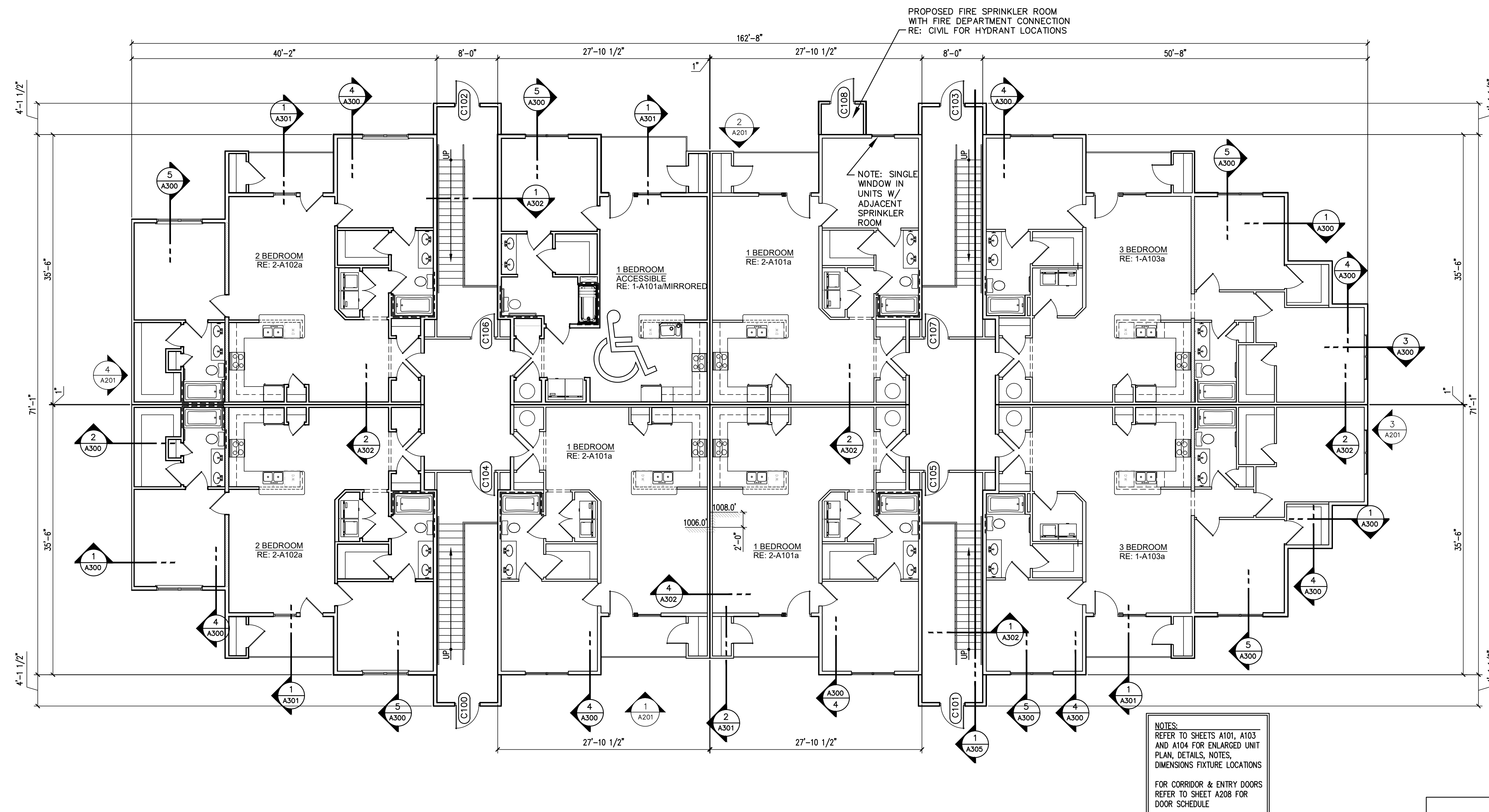
REVISED:

© BCS Design, Inc. 2022
This drawing is COPYRIGHTED work by BCS Design, Inc.
in either electronic or printed form. This drawing may not be
photographed, traced, printed or copied in any manner without
the written permission of BCS Design, Inc.

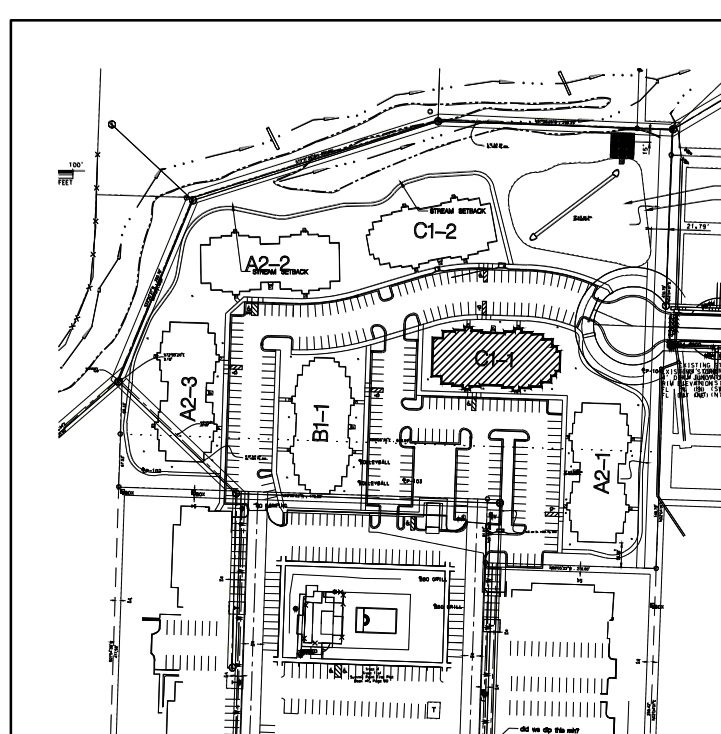
SHEET NO.

A108a

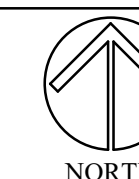
copyright © 2022



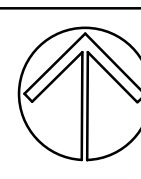
NOTES:
REFER TO SHEETS A101, A103
AND A104 FOR ENLARGED UNIT
PLAN, DETAILS, NOTES,
DIMENSIONS, FIXTURE LOCATIONS
FOR CORRIDOR & ENTRY DOORS
REFER TO SHEET A208 FOR
DOOR SCHEDULE



1 BUILDING C1-1 FIRST LEVEL; 3 STORY (12) 1 BEDROOM UNITS (6) 3 BEDROOM (6) 2 BEDROOM
1/8" = 1'-0" 10,300 SQUARE FEET



KEY PLAN





BCS Design, Inc.

A Full Service
Architectural Firm
WWW.BCSARCHITECTS.COM
19920 West 161st Street
Olathe, Kansas 66062
Phone: (913) 780-4820
Fax: (913) 780-5088

BUILDING TYPE C - (12) 1BEDROOM UNITS (6) 2 BEDROOM (6) 3 BEDROOM

Summit Point Apartments Phase II

504 NE Chipman Road

Lee's Summit, Missouri 64063



PROJECT NO. : 2021-08
DATE : 01.15.2022
DRAWN BY : BCS STAFF
REVIEWED BY :

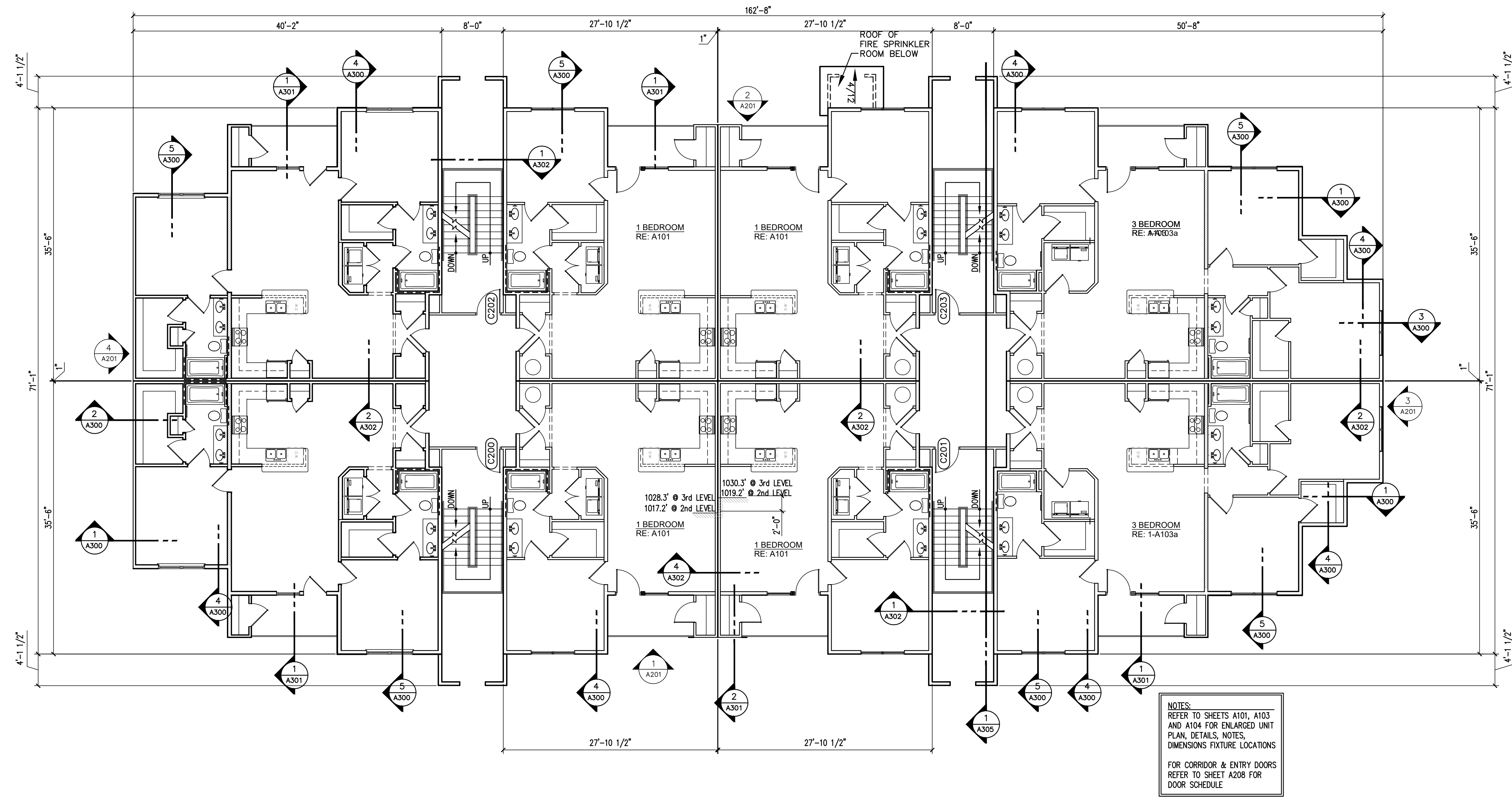
REVISED:

© BCS Design, Inc. 2022
This drawing is COPYRIGHTED work by BCS Design, Inc.
in either electronic or printed form. This drawing may not be
photographed, traced, printed or copied in any manner without
the written permission of BCS Design, Inc.

SHEET NO.

A108b

copyright © 2022

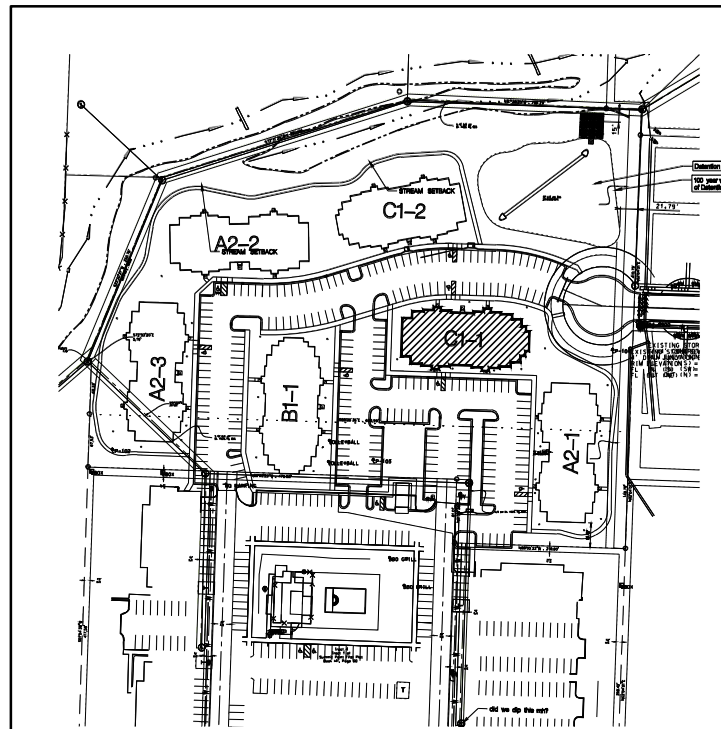


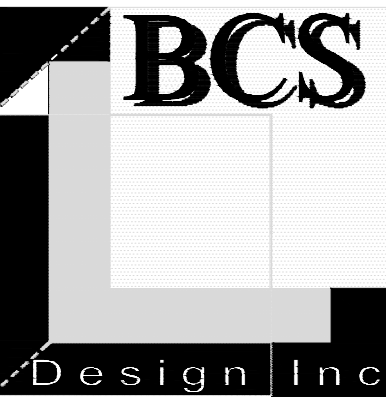
1 BUILDING C1-1 SECOND LEVEL (THIRD SIMILAR)

1/8" = 1'-0"



KEY PLAN





BCS Design, Inc.

A Full Service
Architectural Firm
WWW.BCSARCHITECTS.COM
19920 West 161st Street
Olathe, Kansas 66062
Phone: (913) 780-4820
Fax: (913) 780-5088

BUILDING TYPE C1-2 - (12) 1 BEDROOM UNITS (6) 2 BEDROOM (6) 3 BEDROOM

Summit Point Apartments Phase II
504 NE Chipman Road
Lee's Summit, Missouri 64063



PROJECT NO. : 2021-08
DATE : 01.15.2022
DRAWN BY : BCS STAFF
REVIEWED BY :

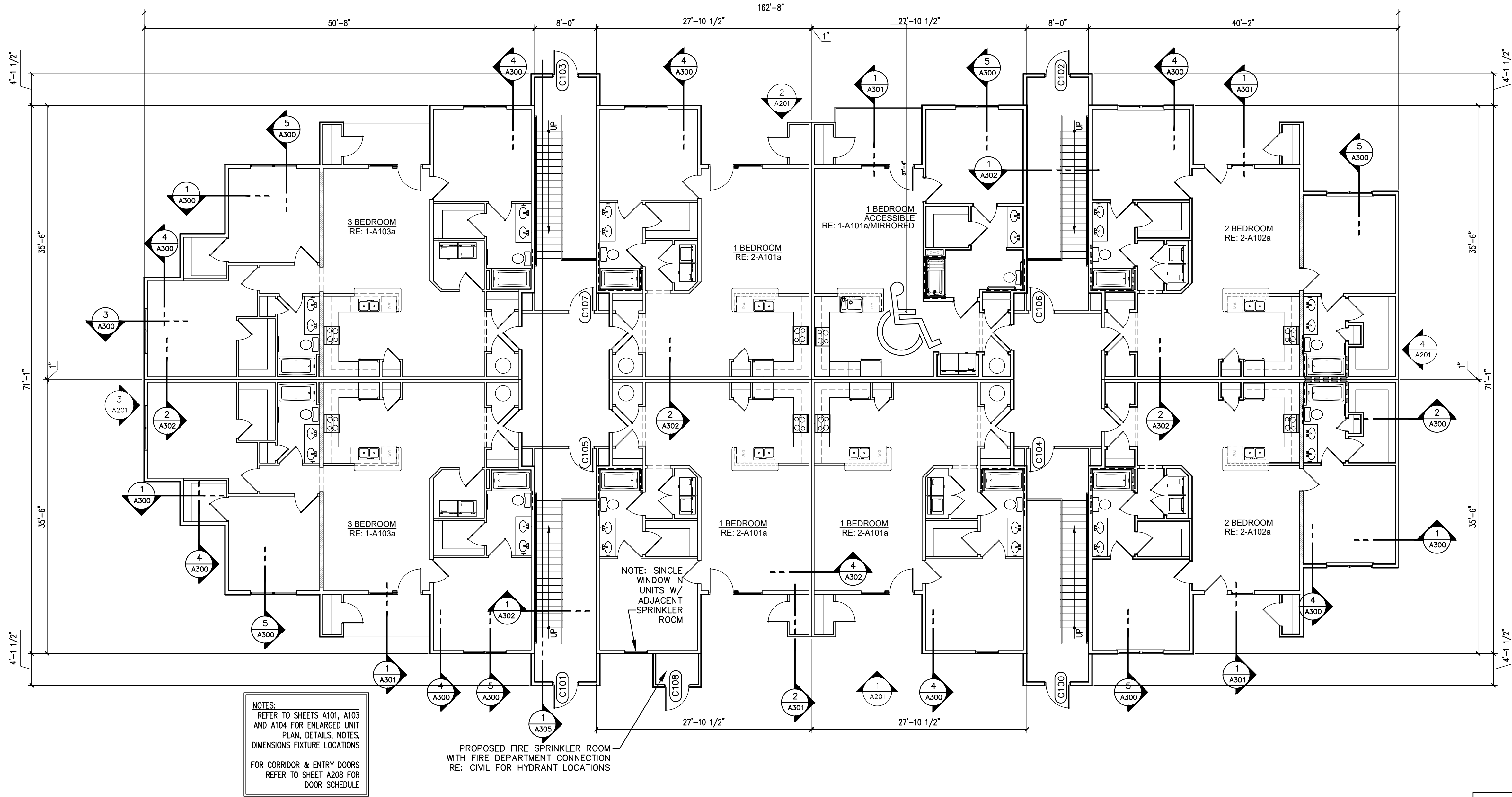
REVISED:

© BCS Design, Inc. 2022
This drawing is COPYRIGHTED work by BCS Design, Inc.
in either electronic or printed form. This drawing may not be
photographed, traced, printed or copied in any manner without
the written permission of BCS Design, Inc.

SHEET NO.

A109a

copyright © 2022



NOTES:
REFER TO SHEETS A101, A103
AND A104 FOR ENLARGED UNIT
PLAN, DETAILS, NOTES,
DIMENSIONS FIXTURE LOCATIONS
FOR CORRIDOR & ENTRY DOORS
REFER TO SHEET A208 FOR
DOOR SCHEDULE

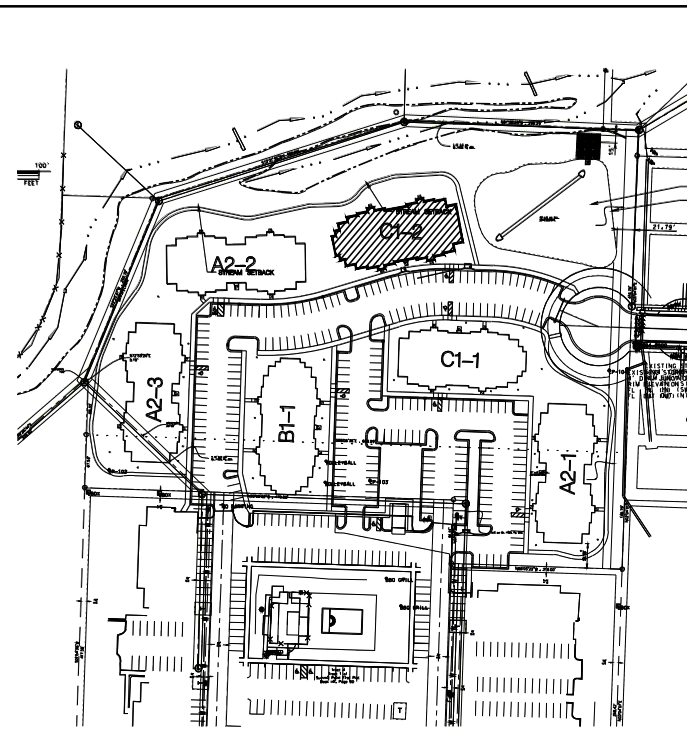
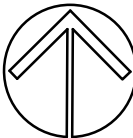
PROPOSED FIRE SPRINKLER ROOM
WITH FIRE DEPARTMENT CONNECTION
RE: CIVIL FOR HYDRANT LOCATIONS

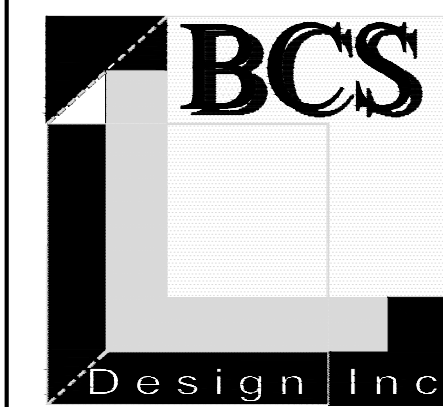
1 BUILDING C1-2 FIRST LEVEL; 3 STORY (12) 1 BEDROOM UNITS (6) 3 BEDROOM (6) 2 BEDROOM

1/8" = 1'-0" 10,300 SQUARE FEET



KEY PLAN





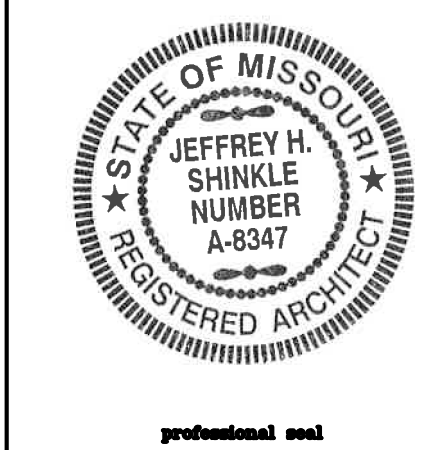
BCS Design, Inc.

A Full Service
Architectural Firm
WWW.BCSARCHITECTS.COM
19920 West 161st Street
Olathe, Kansas 66062
Phone: (913) 780-4820
Fax: (913) 780-5088

BUILDING TYPE C - (12) 1BEDROOM UNITS (6) 2 BEDROOM (6) 3 BEDROOM

Summit Point Apartments Phase II

504 NE Chipman Road
Lee's Summit, Missouri 64063



PROJECT NO. : 2021-08
DATE : 01.15.2022
DRAWN BY : BCS STAFF
REVIEWED BY :

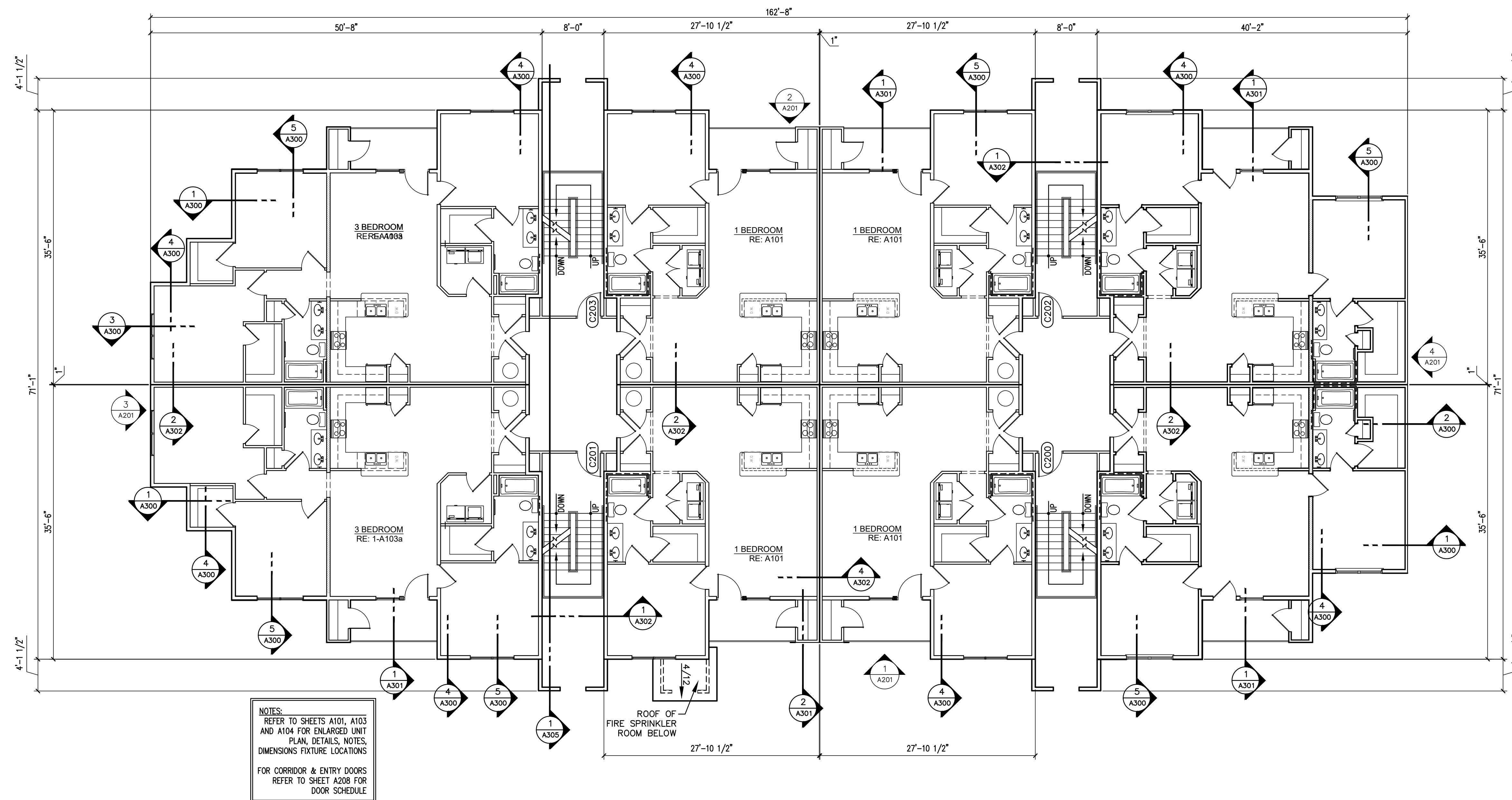
REVISED:

© BCS Design, Inc. 2022
This drawing is COPYRIGHTED work by BCS Design, Inc.
in either electronic or printed form. This drawing may not be
photographed, traced, printed or copied in any manner without
the written permission of BCS Design, Inc.

SHEET NO.

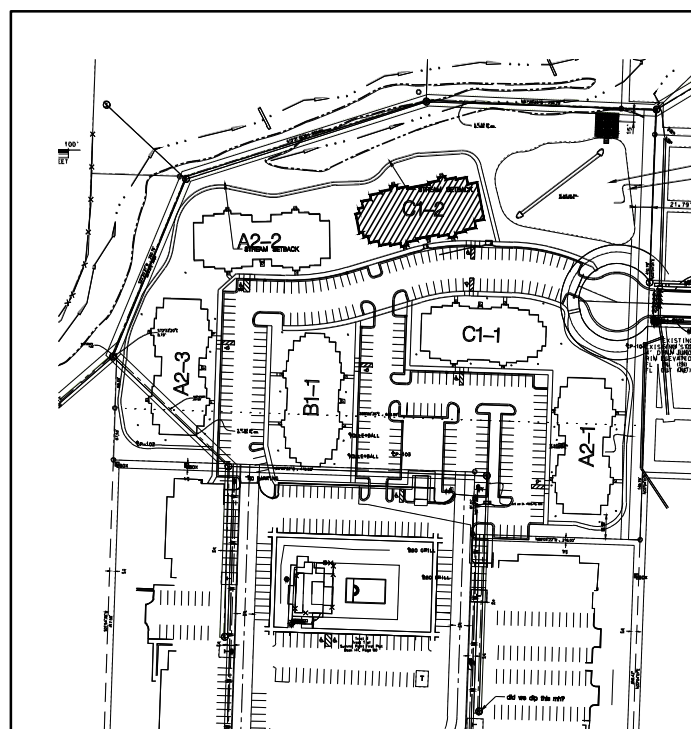
A109b

copyright © 2022



1 BUILDING C1-2 SECOND LEVEL (THIRD SIMILAR)

1/8" = 1'-0"



KEY PLAN

