



April 8, 2022

Dear Neighbor,

The owners of the property located at 420 – 450 SW Longview Blvd; Lee's Summit MO 64063 have started the process of vacating a portion of Public right-of-way along SW Longview Boulevard. The application is identified as Project Number PL2022086.

Attached is an Exhibit of the proposed right-of-way vacation.

One of the steps in the Lee's Summit vacation of right-of-way process is to hold a neighborhood meeting with property owners with 300' of the property being vacated. We have scheduled the following neighborhood meeting and invite you to attend.

Neighborhood Informational meeting

Date: Wednesday April 20th, 2022

Time: 7:00PM

Join Zoom Meeting

<https://us02web.zoom.us/j/85197936766?pwd=Mnc1dIZjOTRhbmhWbXhTIFZl3V3cUUtTUT09>

Meeting ID: 851 9793 6766

Passcode: 896201

One tap mobile

+16699006833,,85197936766#,,,,*896201# US (San Jose)

+12532158782,,85197936766#,,,,*896201# US (Tacoma)

Dial by your location

+1 669 900 6833 US (San Jose)

+1 253 215 8782 US (Tacoma)

+1 346 248 7799 US (Houston)

+1 929 205 6099 US (New York)

+1 301 715 8592 US (Washington DC)

+1 312 626 6799 US (Chicago)

Meeting ID: 851 9793 6766

Passcode: 896201

Find your local number: <https://us02web.zoom.us/j/ksmfjxX2>

If you are unable to attend the neighborhood meeting, a public hearing is currently scheduled to be held at the Lee's Summit Planning Commission, **tentatively** on May 12th, 2022 in the Council Chambers of City Hall located at 220 SE Green Street. Public comments and input will be allowed at this meeting.

We invite you to attend the neighborhood meeting to learn more about the planning application.
We look forward to seeing you at the meeting.

Sincerely,

SCHLAGEL & ASSOCIATES, P.A.

A handwritten signature in blue ink, appearing to read "J. T. Skidmore".

Jeffrey T. Skidmore, PE
Principal / Sr. Project Engineer
Direct 913-322-7145 / Cell 913-207-4059
JS@schlagelassociates.com

EXHIBIT A

DESCRIPTION:

A 40 foot wide tract of land being part of Southwest Longview Boulevard right-of-way as platted in "NEW LONGVIEW ROADWAY PLAT, TRACTS J THROUGH U", a subdivision in the said City of Lee's Summit, as recorded in Jackson County Recorder of Deeds as Instrument Number 2005I0061432, lying adjacent to and parallel with the East line of the "MINOR PLAT OF TOWER PARK LOTS 7A AND 7B", a subdivision in the City of Lee's Summit, Jackson County, Missouri, as recorded in Jackson County Recorder of Deeds as Instrument Number 2021E47726 and being more particularly described as follows.

Beginning at the Northwest corner of said Southwest Longview Boulevard right-of-way of said "NEW LONGVIEW ROADWAY PLAT, TRACTS J THROUGH U";

thence along the North line of said "NEW LONGVIEW ROADWAY PLAT, TRACTS J THROUGH U", North 58 degrees 46 minutes 33 seconds East, a distance of 40.00 feet;

thence along a line 40.00 East of and parallel with East line of said "MINOR PLAT OF TOWER PARK LOTS 7A AND 7B" and the West line of said Southwest Longview Boulevard right-of-way, South 31 degrees 13 minutes 27 seconds East, a distance of 252.81 feet;

thence South 58 degrees 46 minutes 33 seconds West, a distance of 40.00 feet to the Southeast corner of said "MINOR PLAT OF TOWER PARK LOTS 7A AND 7B";

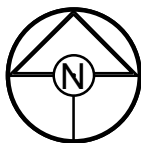
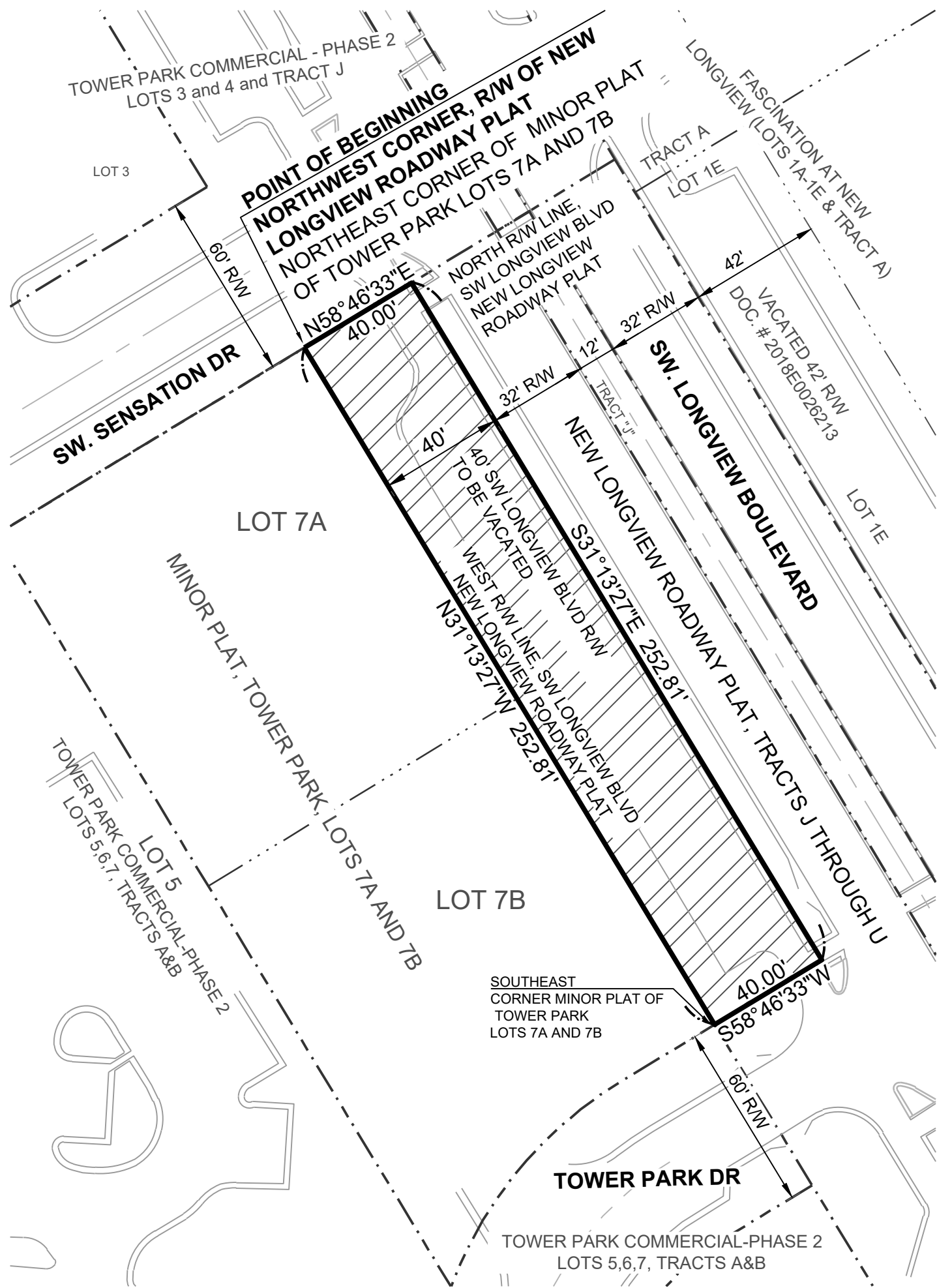
thence along the East line of said "MINOR PLAT OF TOWER PARK LOTS 7A AND 7B" and the West line of said Southwest Longview Boulevard right-of-way, North 31 degrees 13 minutes 27 seconds West, a distance of 252.81 feet to the Point of Beginning,
and containing 10112.40 square feet or 0.2321 acres, more or less.



David Allen Rinne, P.L.S.
MO# PLS-2014000198

DRAWN BY: JWT	 SCHLAGEL ENGINEERS PLANNERS SURVEYORS LANDSCAPE ARCHITECTS 14920 West 107th Street • Lenexa, Kansas 66215 www.schlagelassociates.com • (913) 492-5158 • Fax: (913) 492-8400 Missouri State Certificates of Authority #E2002003800-F #LAC2001005237 #LS2002008859-F
CHECKED BY: SCH	
DATE: 3-14-2022	
PROJECT NO: 20-106	
SCALE:	
SHEET 1 of 2	RIGHT-OF-WAY VACATE

EXHIBIT A



DRAWN BY:	JWT
CHECKED BY:	SCH
DATE:	3-14-2022
PROJECT NO:	20-106
SCALE:	1" = 40'
SHEET	2 of 2

**SCHLAGEL**

ENGINEERS PLANNERS SURVEYORS LANDSCAPE ARCHITECTS

14920 West 107th Street • Lenexa, Kansas 66215

www.schlagelassociates.com • (913) 492-5158 • Fax: (913) 492-8400

Missouri State Certificates of Authority

#E2002003800-F #LAC2001005237 #LS2002008859-F

RIGHT-OF-WAY VACATE