

MARKET STREET CENTER
PUBLIC SANITARY SEWER IMPROVEMENTS
IN THE CITY OF LEE'S SUMMIT, JACKSON COUNTY, MO

GENERAL NOTES:

THE DESIGN AND CONSTRUCTION OF THE PUBLIC SANITARY SEWER FACILITIES SHALL BE GOVERNED BY THE CITY OF LEE'S SUMMIT, MISSOURI DESIGN CRITERIA AND TECHNICAL SPECIFICATIONS, LATEST EDITIONS.

UTILITY COMPANIES:

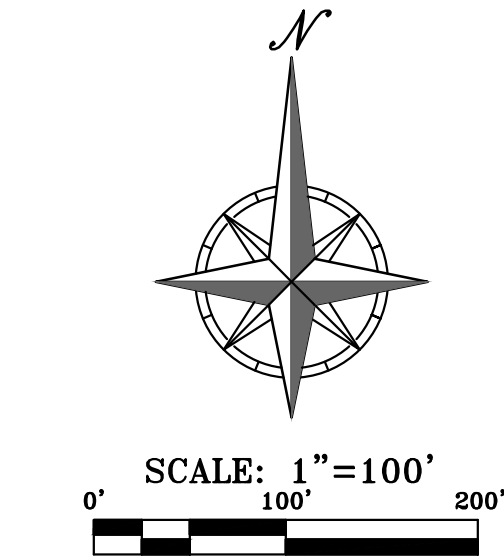
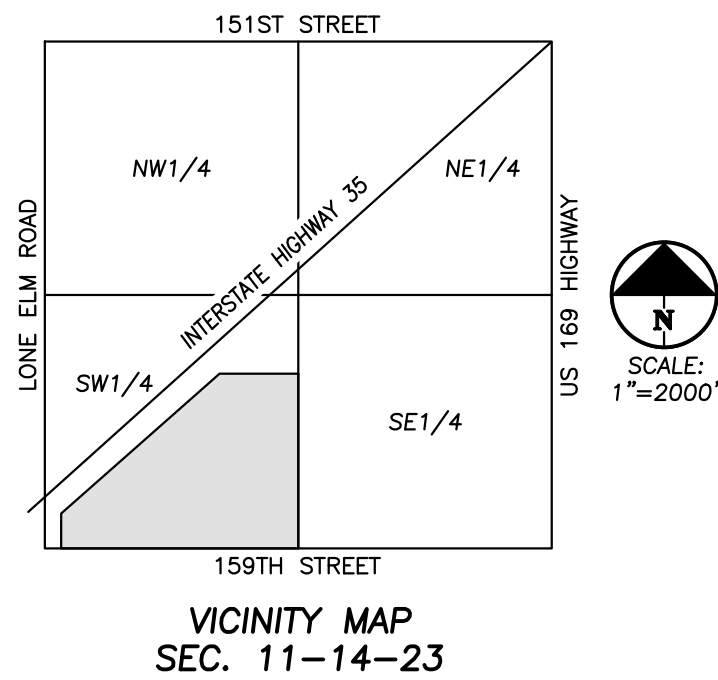
MISSOURI GAS ENERGY (816) 969-2218
LUCAS WALLS (LUCAS.WALLS@SUG.COM)
3025 SOUTHEAST CLOVER DRIVE
LEE'S SUMMIT, MO 64082

EVERGY (816) 347-4339
PHILLIP INGRAM (PHILLIP.INGRAM@KCPL.COM)
RON DEJARNETTE (RON.DEJARNETTE@KCPL.COM)
1300 HAMLEN ROAD
LEE'S SUMMIT, MO 64081

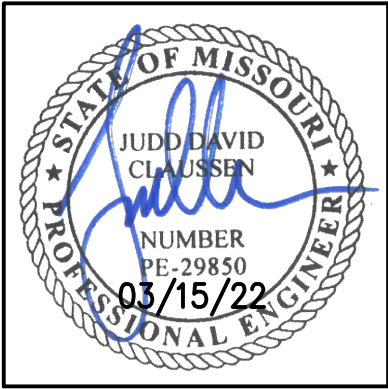
STORM SEWER (PUBLIC WORKS DEPARTMENT) (816) 969-1800
220 SE GREEN STREET
LEE'S SUMMIT, MO 64063

SANITARY SEWER & WATER (WATER UTILITIES DEPT.) (816)-969-1900
1200 SE HAMLEN ROAD,
LEE'S SUMMIT, MO 64081

AT&T (913) 383-4929
MR. CLAYTON ANSPAUGH (CA4089@ATT.COM) (913) 383-4849-FAX
9444 NALL AVENUE
OVERLAND PARK, KANSAS 66207



PREPARED & SUBMITTED BY:
PHELPS ENGINEERING, INC.
1270 N. WINCHESTER
OLATHE, KANSAS 66061



JUDD D. CLAUSSEN, MISSOURI P.E.#29850

DATE

	INDEX
SS-1	COVER SHEET
SS-2	SANITARY SEWER PLAN & PROFILES
SS-3	EROSION CONTROL & RESTORATION
SS-4	SANITARY SEWER DETAILS
SS-5	PAVEMENT DETAILS

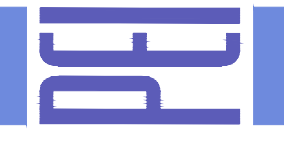
COVER SHEET
MARKET STREET CENTER
M291 AND SW MARKET STREET
CITY OF LEE'S SUMMIT, JACKSON COUNTY, MISSOURI

PROJECT NO.	DATE	BY	APPROVED
210639	03-15-22	SMH	DAF
DATE: 02-04-22	DRAWN BY: JDC	REVISIONS:	REVISED PER CITY COMMENTS
CHECKED: DAF	APPROVED: JDC		
KANSAS	DATE OF AUTHORIZATION		
ENGINEERING	NO. 29850		
MISSOURI	03/15/22		
ENGINEERING	03/15/22		

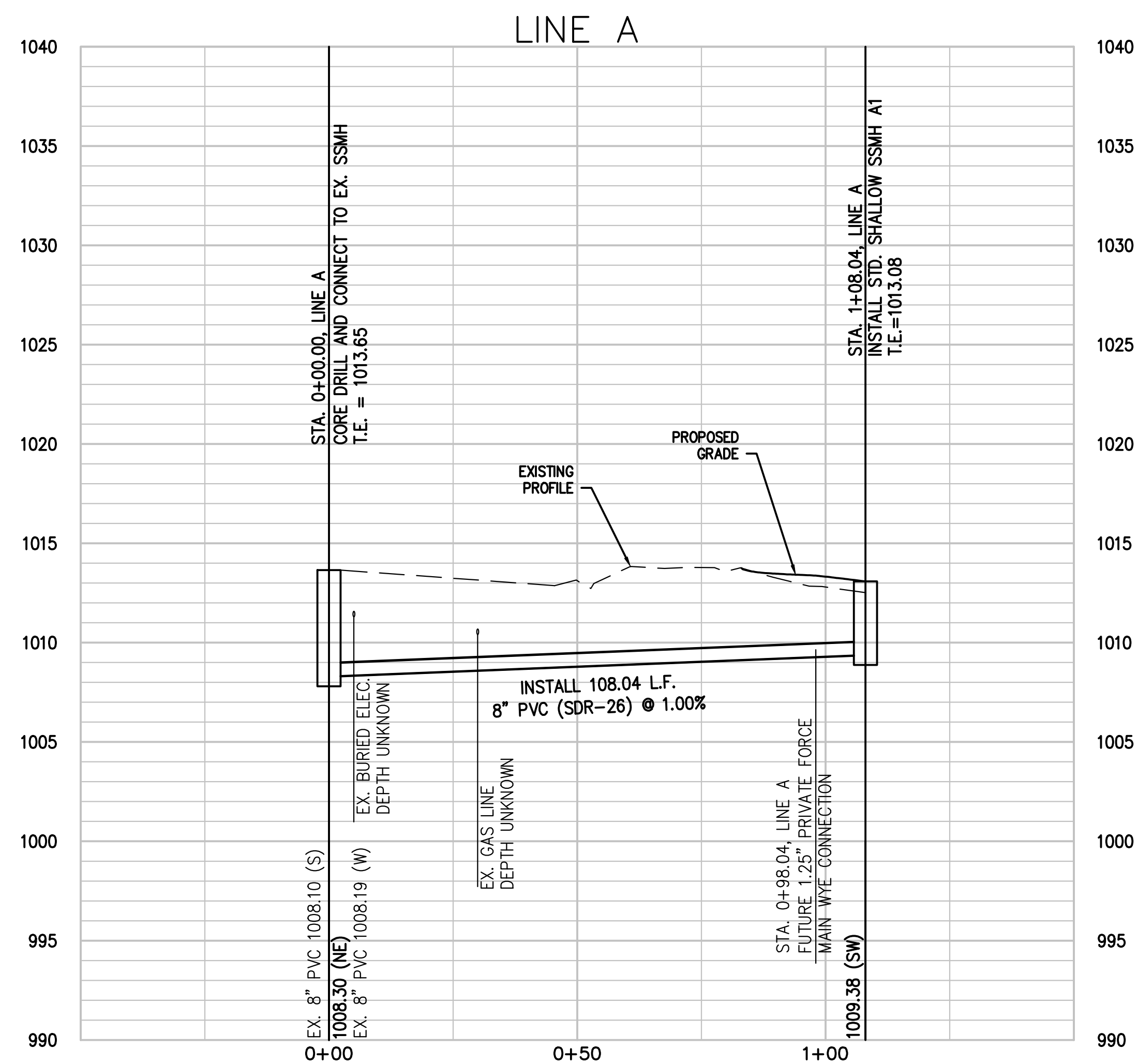
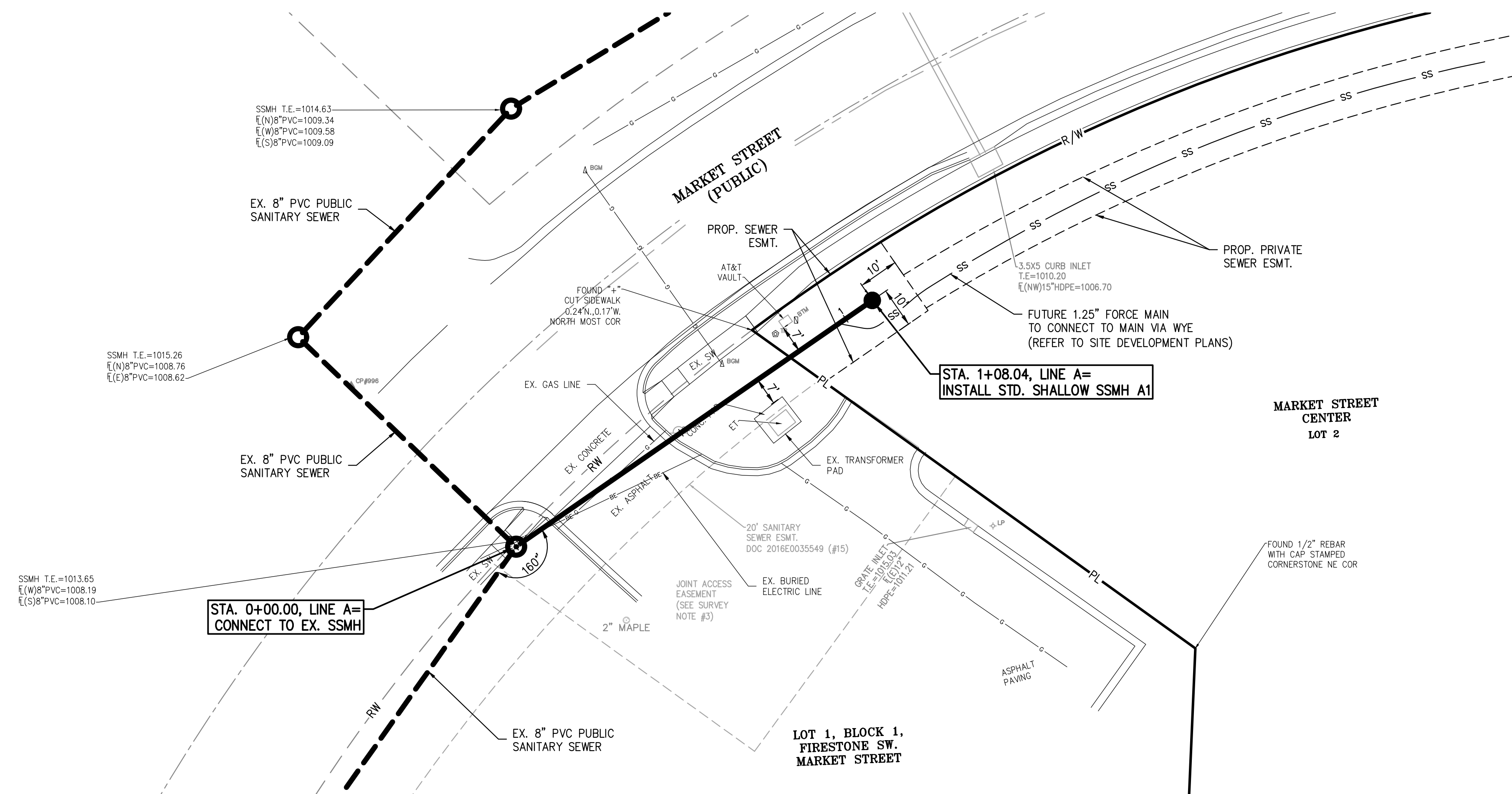
SHEET
SS-1



PHELPS ENGINEERING, INC.
1270 N. Winchester
Olathe, Kansas 66061
(913) 393-1155
Fax (913) 393-1166
www.phelpsenr.com

PLANNING
ENGINEERING
IMPLEMENTATION



RELEASED FOR
CONSTRUCTION
As Noted on Plans Review
Development Services Department
Lee's Summit, Missouri
04/27/2022




 SCALE: 1"=20'

 SCALE: 1"=20' HORIZ.
 1"= 5' VERT.

MANHOLE CONNECTION NOTE:

1. THE EXISTING MANHOLE WALL SHALL BE CORE DRILLED.
2. A FLEXIBLE PIPE-TO-MANHOLE CONNECTOR SHALL BE INSTALLED AS SHOWN IN THE STANDARD DRAWINGS.

**RELEASED FOR
CONSTRUCTION**
As Noted on Plans Review
Development Services Department
Lee's Summit, Missouri
04/27/2022

[illegible]



