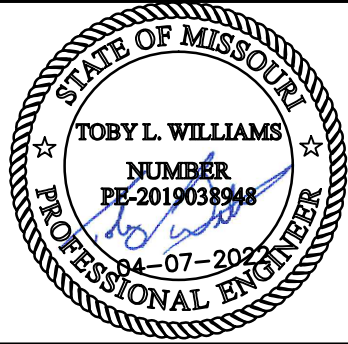


15+50 16+00 16+50 17+00 17+50

Certificates of Authority:
Architecture: MO 310 / KS 73
Engineering: MO 4 / KS 241
Land Surveying: MO 123 / KS 36

DEVELOPER/OWNER
DAVID WARD
NORTH OAK SAFETY STORAGE, LLC
1120 NW EAGLE RIDGE BLVD.
GRAIN VALLEY, MO 64029
(816) 229-8115

**LAKWOOD BUSINESS
CENTER ON I-470 - PLAT S
2710 NE HAGEN ROAD
LEE'S SUMMIT, MO 64064
JACKSON COUNTY**



Toby L. Williams, PE
PE-2019038948 (MISSOURI #)

© 2021 Powell CWM, Inc. This drawing has been prepared by Powell CWM, Inc. and is intended for use on this project only. Pursuant to the Architectural Works Copyright Protection Act of 1990, all drawings, specifications, ideas and designs, including the overall form, arrangement and composition of spaces and elements appearing herein constitute the original, copyrighted work of Powell CWM, Inc. Any reproduction, use, or disclosure of information contained herein without prior written consent of Powell CWM, Inc. is strictly prohibited.

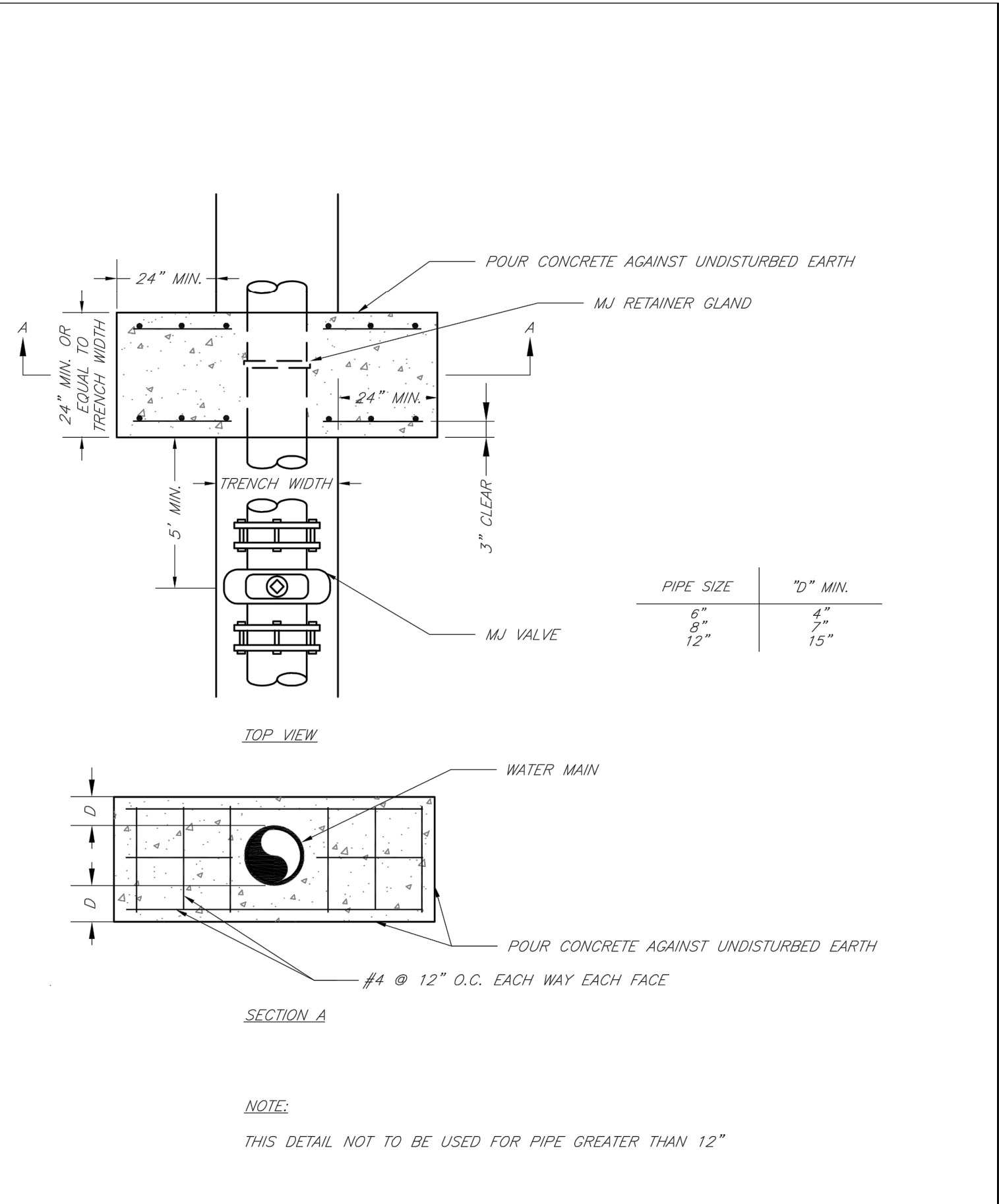
REVISIONS NO. DATE / DESCRIPTION									


DRAWN BY: JV
CHECKED BY: TLW
PROJECT #: 21-1883
ISSUE DATE: 03/31/2022
ISSUED FOR:

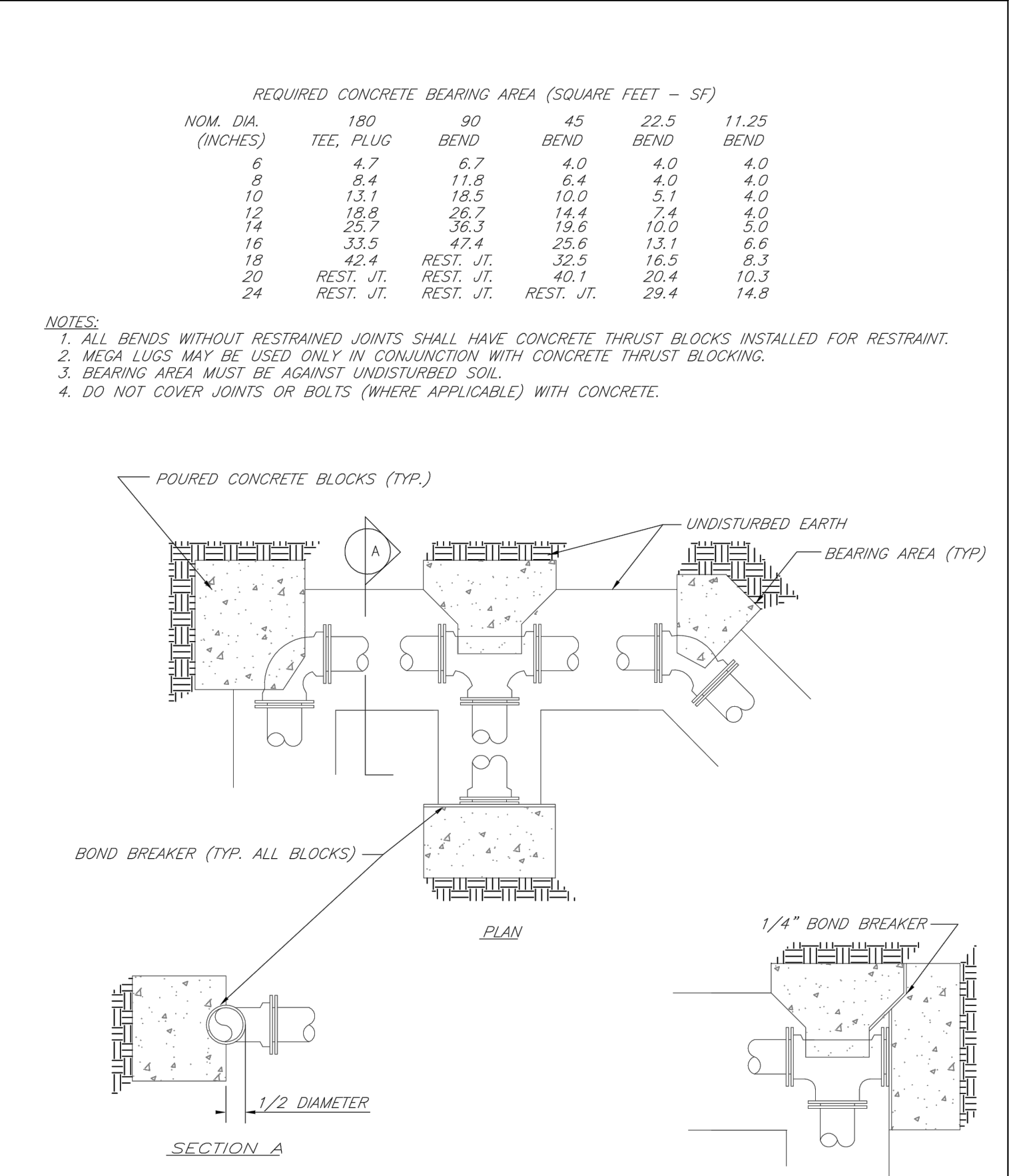
PERMIT


PLAN & PROFILE
LINE 2

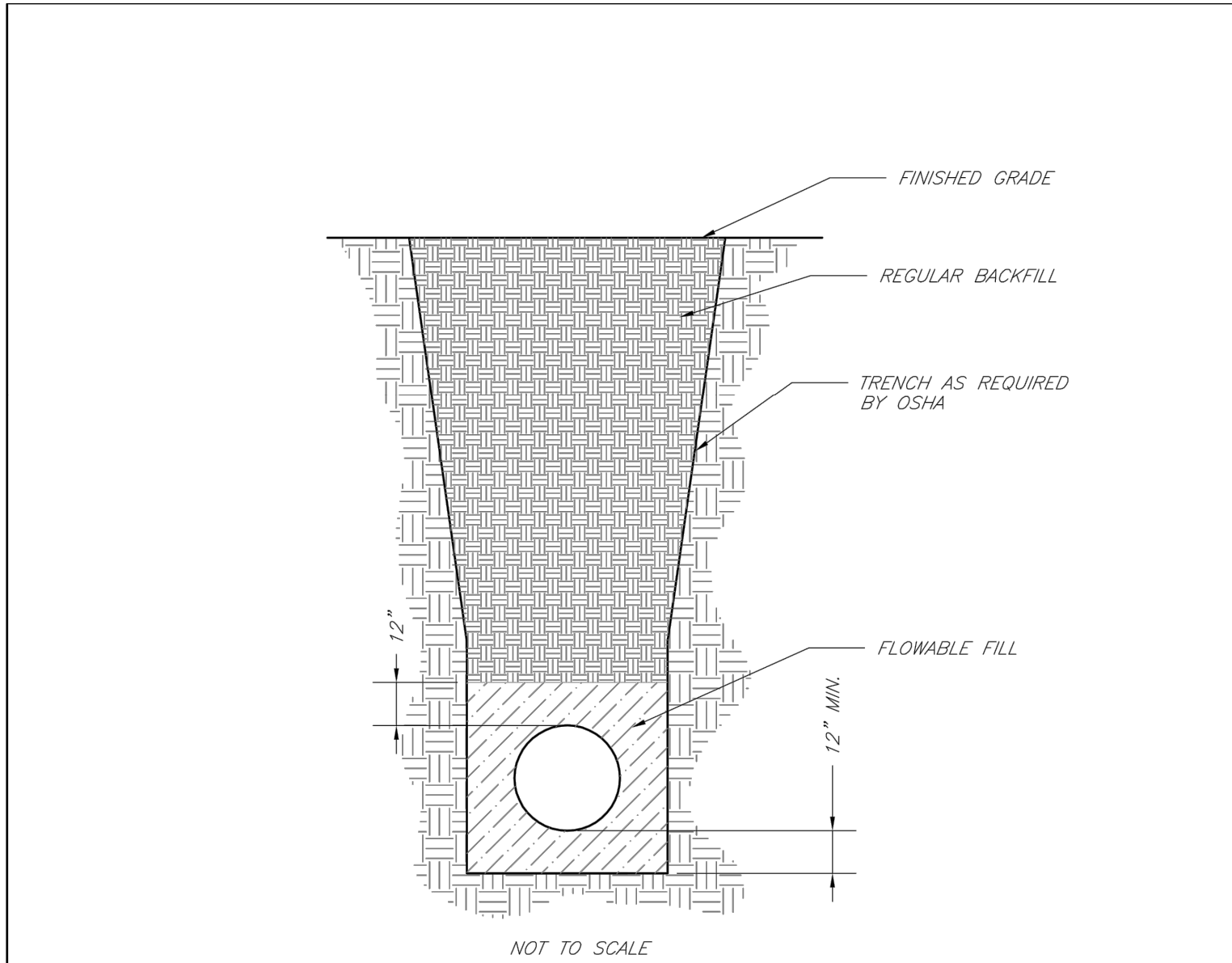
C-512



	LEE'S SUMMIT MISSOURI PUBLIC WORKS ENGINEERING DIVISION 220 SE GREEN STREET LEE'S SUMMIT, MO 64063	Date: 02/13
		Drawn By: JN
		Checked By: DL
	FILE: WAT-3	
	Rev: 1/14	
	STRADDLE BLOCK	

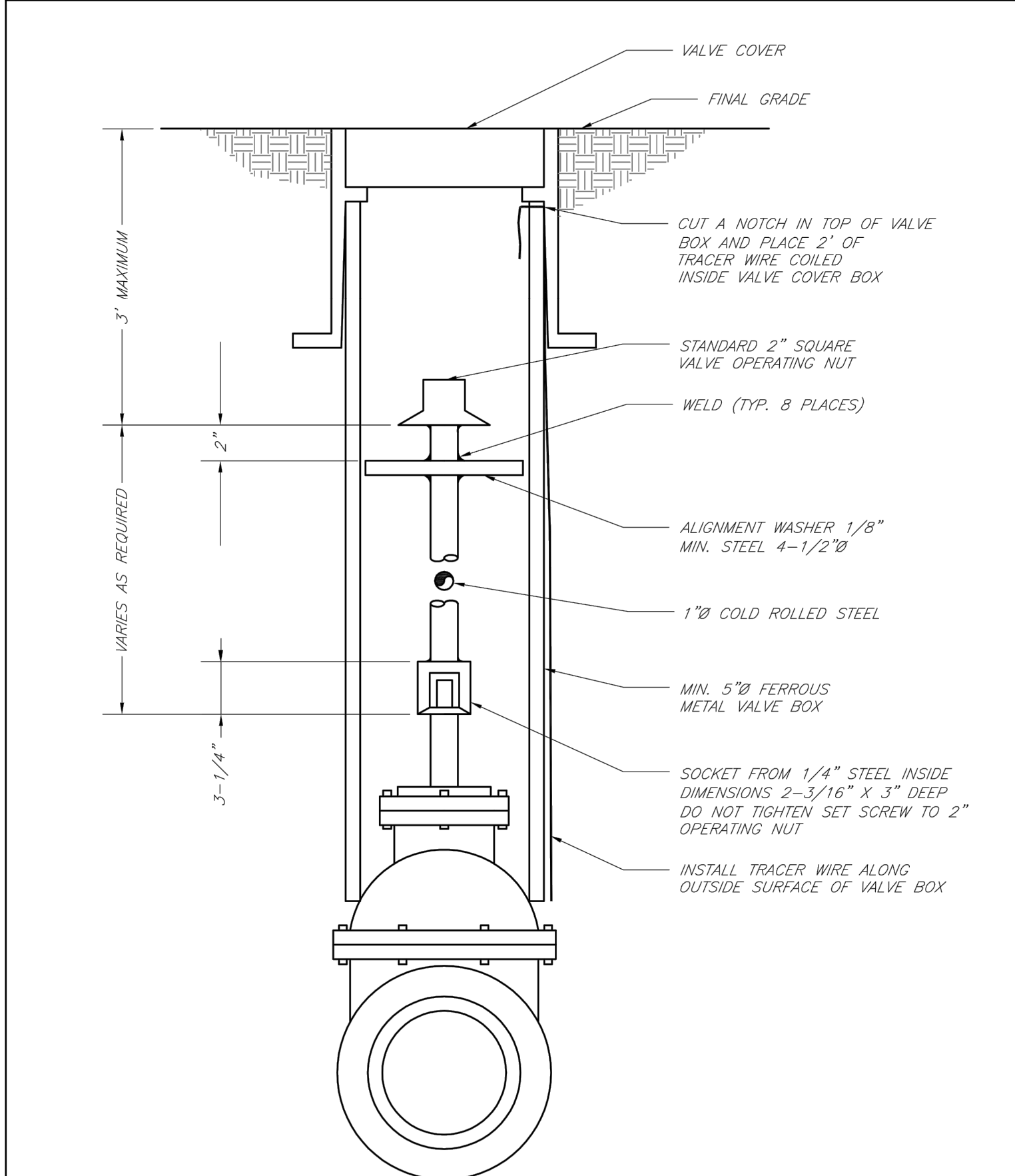


	LEE'S SUMMIT MISSOURI PUBLIC WORKS ENGINEERING DIVISION 220 SE GREEN STREET LEE'S SUMMIT, MO 64063	Date: 02/13
		Drawn By: JN
		Checked By: DL
	FILE: WAT-1	
	Rev: 1/14	
	Rev:	
HORIZONTAL THRUST BLOCKS		

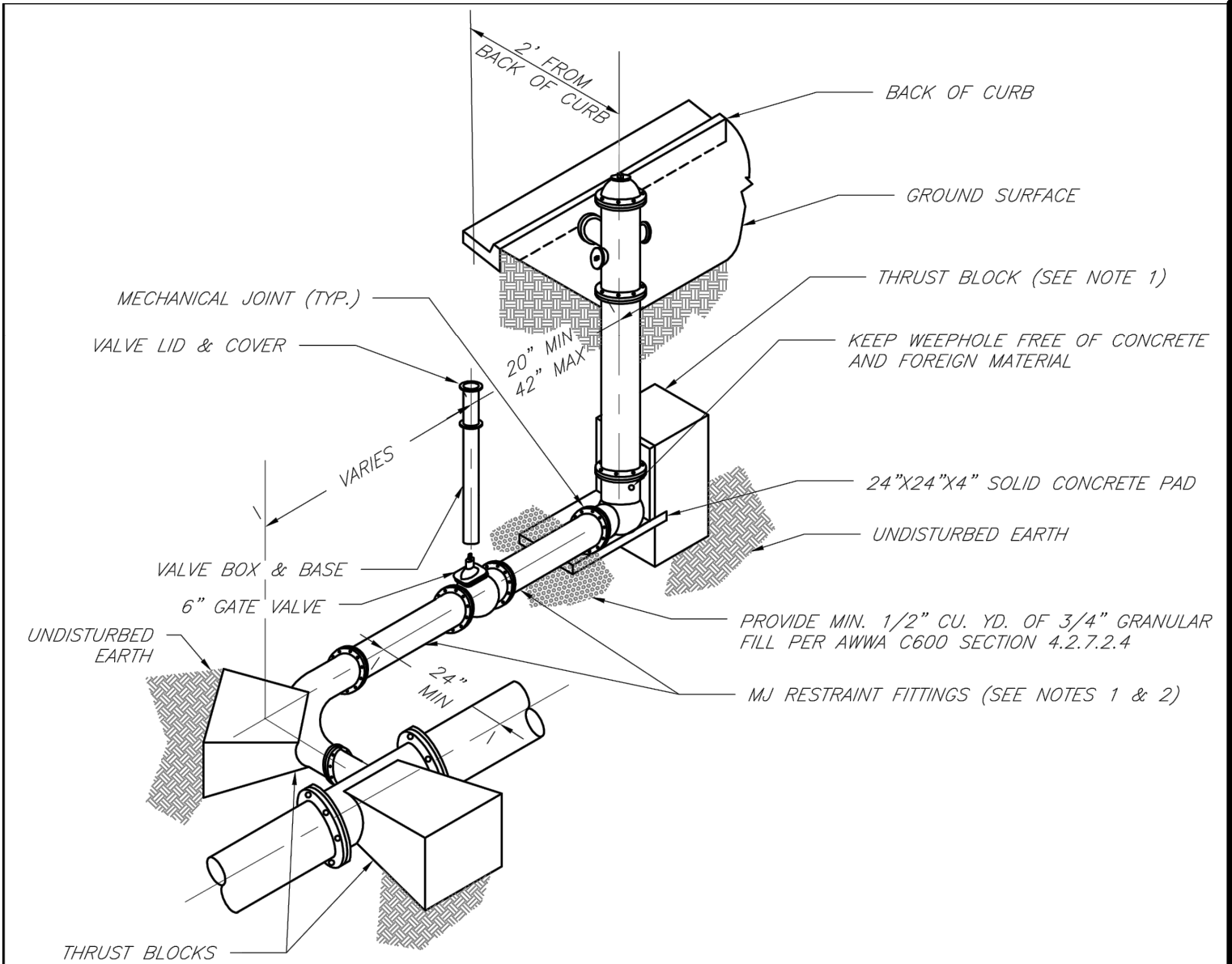


- NOTES:**
1. FLOWABLE FILL SHALL MEET THE REQUIREMENTS OF THE CITY OF LEE'S SUMMIT DESIGN AND CONSTRUCTION MANUAL.
 2. REGULAR BACKFILL ABOVE THE TRENCH CHECK SHALL BE FREE OF DEBRIS, ORGANIC MATTER, AND STONES > 6" IN ANY DIMENSION.
 3. TOP OF FLOWABLE BACKFILL SHALL EXTEND 12" ABOVE THE TOP OF THE PIPE.
 4. LENGTH OF TRENCH CHECK SHALL BE A MINIMUM OF 12".

	<div>LEE'S SUMMIT MISSOURI</div> <div>PUBLIC WORKS ENGINEERING DIVISION 220 SE GREEN STREET LEE'S SUMMIT, MO 64063</div>	Date: 02/13
		Drawn By: JN
		Checked By: DL
		FILE: WAT-6
		Rev: 1/14
		Rev:
TRENCH CHECK		

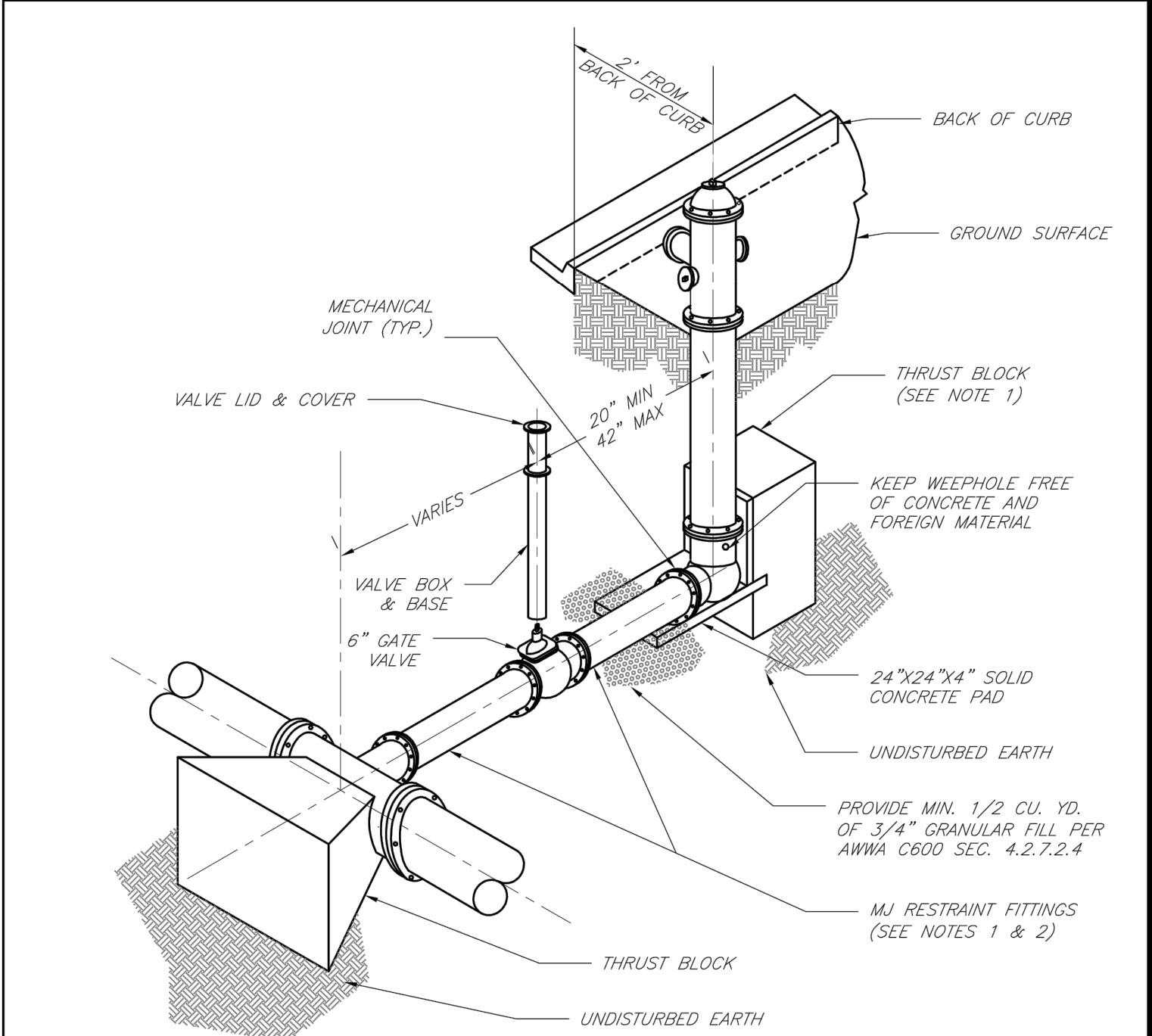


	<div>LEE'S SUMMIT MISSOURI</div> <div>PUBLIC WORKS ENGINEERING DIVISION 220 SE GREEN STREET LEE'S SUMMIT, MO 64063</div> <div>VALVE STEM EXTENSION AND VALVE BOX</div>	Date: 02/13
		Drawn By: JN
		Checked By: DL
		FILE: WAT-9
		Rev: 1/14
		Rev:



- NOTES:**
1. WHEN RETAINER GLANDS ARE USED IN LIEU OF MECHANICAL JOINT (MJ) RESTRAINT FITTINGS, HORIZONTAL THRUST BLOCKS ARE REQUIRED.
 2. GATE VALVE MAY BE BOLTED DIRECTLY TO MJ RESTRAINT TEE.
 3. SEE APPROVED PRODUCTS LIST FOR WATER UTILITIES FOR FIRE HYDRANT, VALVES, VALVE BOX LID, AND COVER.
 4. BOTTOM HYDRANT FLANGE SHALL BE 2" TO 6" ABOVE FINISHED GRADE.
 5. FOR STREETS WITHOUT CURBS FIRE HYDRANTS SHALL BE PLACED WITHIN 1 FOOT OF THE R/W LINE, BUT NOT MORE THAN 10' FROM EDGE OF PAVEMENT. FIRE HYDRANT SHALL NOT BE PLACED IN BOTTOM OF DITCH.
 6. HYDRANT SHALL BE ROTATED AS DIRECTED BY INSPECTOR.

	LEE'S SUMMIT MISSOURI PUBLIC WORKS ENGINEERING DIVISION 220 SE GREEN STREET LEE'S SUMMIT, MO 64063	Date: 02/13
		Drawn By: JN
		Checked By: DL
		FILE: WAT-8
	HYDRANT WITH 90 DEGREE BEND	Rev: 1/14
		Rev:



- NOTES:**
1. WHEN RETAINER GLANDS ARE USED IN LIEU OF MECHANICAL JOINT (MJ) RESTRAINT FITTINGS, HORIZONTAL THRUST BLOCKS ARE REQUIRED.
 2. GATE VALVE MAY BE BOLTED DIRECTLY TO MJ RESTRAINT TEE.
 3. SEE APPROVED PRODUCTS LIST FOR WATER UTILITIES FOR FIRE HYDRANT, VALVES, VALVE BOX LID, AND COVER.
 4. BOTTOM HYDRANT FLANGE SHALL BE 2" TO 6" ABOVE FINISHED GRADE.
 5. FOR STREETS WITHOUT CURBS FIRE HYDRANTS SHALL BE PLACED WITHIN 1 FOOT OF THE R/W LINE, BUT NOT MORE THAN 10' FROM EDGE OF PAVEMENT. FIRE HYDRANT SHALL NOT BE PLACED IN BOTTOM OF DITCH.
 6. HYDRANT SHALL BE ROTATED AS DIRECTED BY INSPECTOR.

	<div>LEE'S SUMMIT MISSOURI</div> <div>PUBLIC WORKS ENGINEERING DIVISION 220 SE GREEN STREET LEE'S SUMMIT, MO 64063</div>	Date: 02/13
		Drawn By: JN
		Checked By: DL
		FILE: WAT-7
		Rev: 1/14
		Rev:
HYDRANT INSTALLATION — STRAIGHT SET		

POWELL

ARCHITECTURE/ENGINEERING/SURVEYING

3200 S. State Route 291, Bldg. 1, Independence, MO 64057
(816) 373-4800 | powellcwm.com

Certificates of Authority:
Architecture: MO 310 / KS 73
Engineering: MO 4 / KS 241
Land Surveying: MO 123 / KS 36

DEVELOPER/OWNER
DAVID WARD
NORTH OAK SAFETY STORAGE, LLC
1120 NW EAGLE RIDGE BLVD.
GRAIN VALLEY, MO 64029
(816) 229-8115

LAKEWOOD BUSINESS
CENTER ON I-470 - PLAT S
2710 NE HAGEN ROAD
LEE'S SUMMIT, MO 64064
JACKSON COUNTY

STATE OF MISSOURI
TOBY L. WILLIAMS
NUMBER
PE-2019038948
04-07-2021
PROFESSIONAL ENGINEER

Toby L. Williams, PE
PE-2019038948 (MISSOURI #)

© 2021 Powell CWM, Inc. This drawing has been prepared by Powell CWM, Inc. This drawing is provided as an instrument of service by Powell CWM, Inc. and is intended for use on this project only. Pursuant to the Architectural Works, Copyright Protection Act of 1990, all drawings, specifications, ideas and designs, including the overall form, arrangement and composition of spaces and elements appearing herein constitute the original, copyrighted work of Powell CWM, Inc. Any reproduction, use, or disclosure of information contained herein without prior written consent of Powell CWM, Inc. is strictly prohibited.

Toby L. Williams, PE
PE-2019038948 (MISSOURI #)

© 2021 Powell CWM, Inc. This drawing has been prepared by Powell CWM, Inc. This drawing provided as an instrument of service by Powell CWM, Inc and is intended for use on this project only. Pursuant to the Architecture Works, Copyright Protection Act of 1990, drawings, specifications, ideas and design including the overall form, arrangement, composition of spaces and elements appear herein constitute the original, copyrighted work of Powell CWM, Inc. Any reproduction, use or disclosure of information contained hereon without prior written consent of Powell CWM, Inc. is strictly prohibited.

REVISIONS	NO.	DATE	DESCRIPTION
	</		