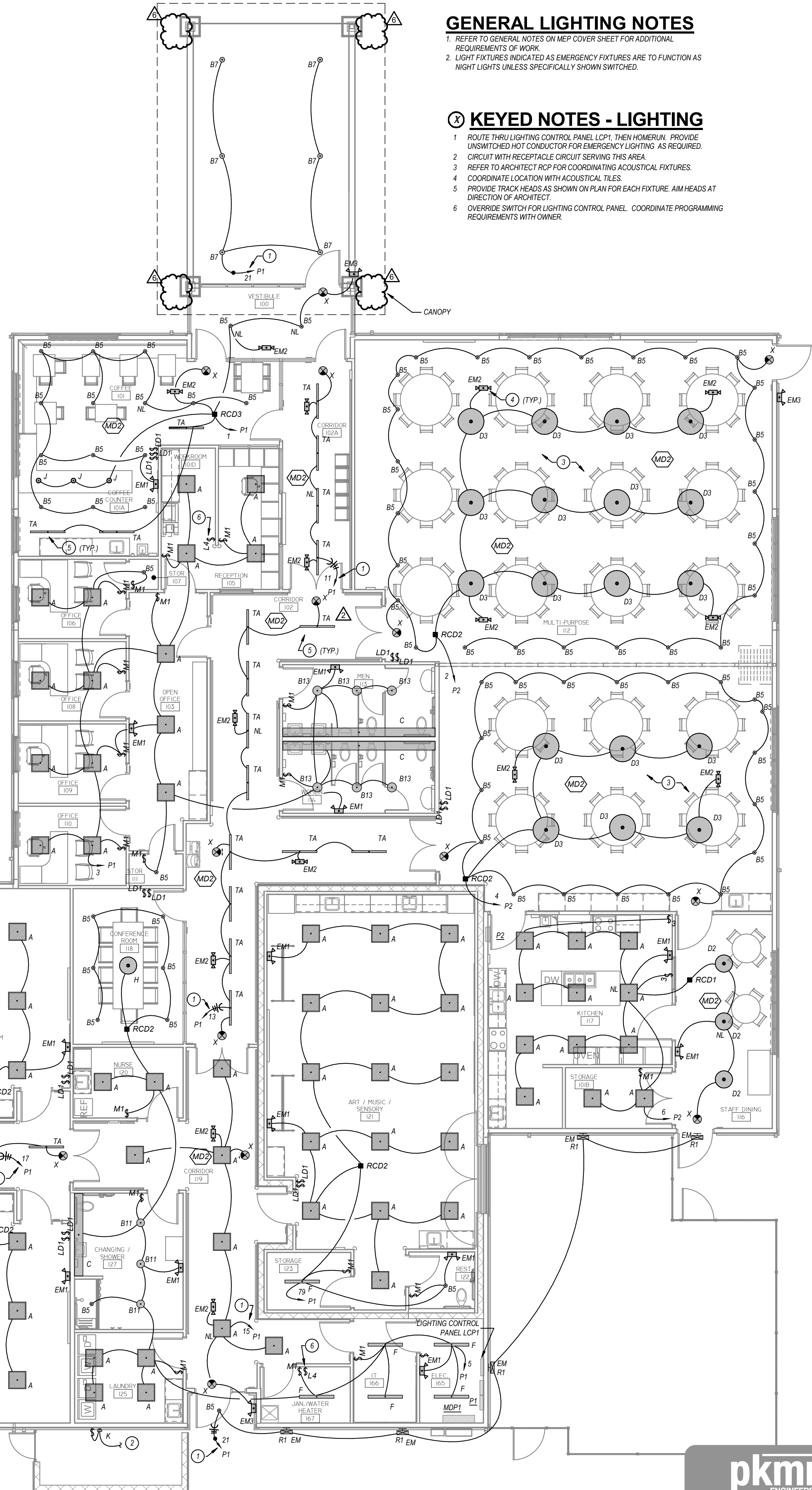




# E1.01



A

B

C

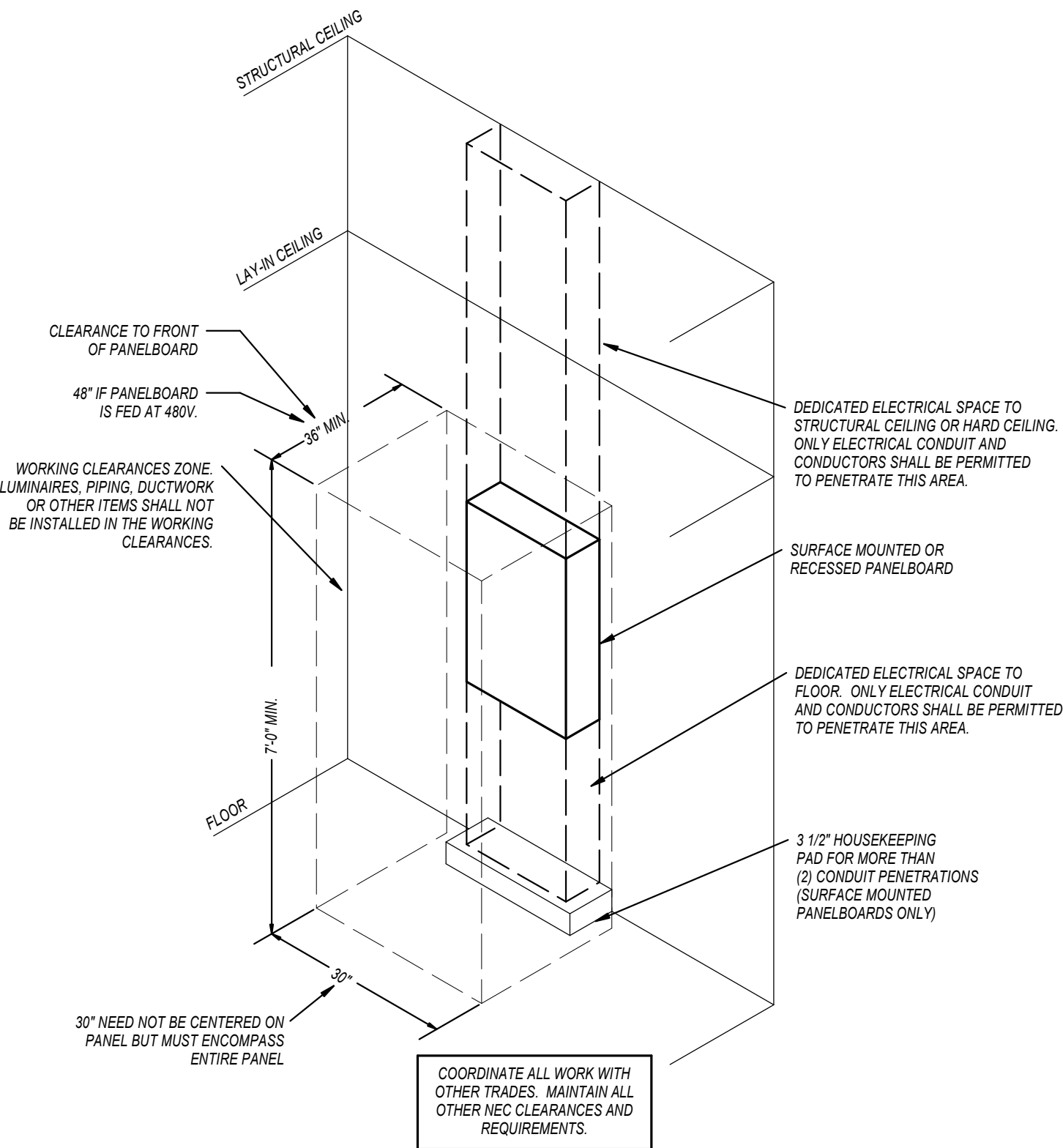
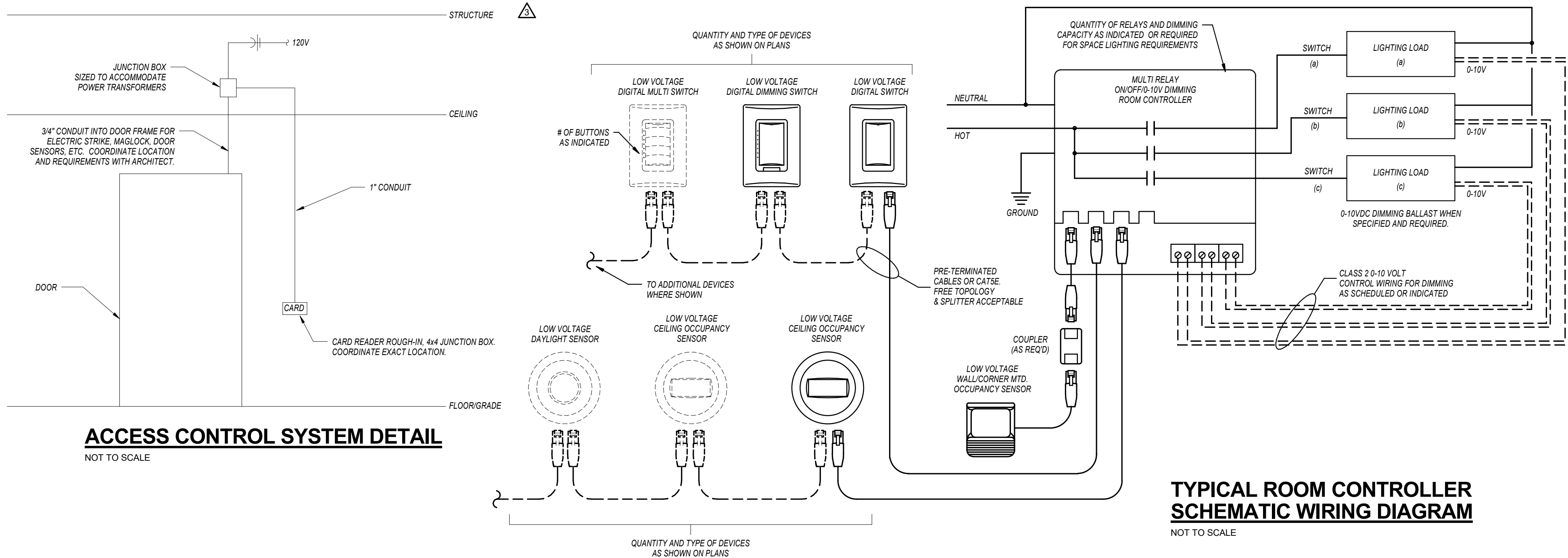
D

E

F

G

H



LIGHT FIXTURE SCHEDULE					
MARK	MANUFACTURER	MODEL	DESCRIPTION	LAMP TYPE	REMARKS
A	WILLIAMS	AT1 SERIES	2'x2' ARCHITECTURAL LED TROFFER. DIFFUSE MATTE ACRYLIC CENTER "FLOATING" LENS. EXTRUDED ALUMINUM DOOR FRAME WITH OPTICAL ASSEMBLY. ALL PARTS PAINTED MATTE WHITE AFTER FABRICATION. INTEGRAL LED DRIVER PRE-WIRED FOR 0-10V DIMMING APPLICATIONS.	ONE (1) 31W, 3000 LUMEN, LED ARRAY, 3500K CCT.	1
B5	JUNO LIGHTING	JSF	5\"/>	ONE (1) 10W, 700 LUMEN, LED MODULE, 90 CRI, 3500K CCT.	1
B7	JUNO LIGHTING	JSF	7\"/>	ONE (1) 13W, 1000 LUMEN, LED MODULE, 90 CRI, 3500K CCT.	1
B11	JUNO LIGHTING	JSF	5\"/>	ONE (1) 10W, 1300 LUMEN, LED MODULE, 90 CRI, 3500K CCT.	1
B13	JUNO LIGHTING	JSF	5\"/>	ONE (1) 20W, 1800 LUMEN, LED MODULE, 90 CRI, 3500K CCT.	1
C	NEO-RAY	70-PF	PERIMETER OPEN WALL WASH FIXTURE. CONTINUOUS LENGTH AS SHOWN ON PLAN. STEEL HOUSING WITH EXTRUDED ALUMINUM SPLAY TO CONCEAL VIEW TO LED(S). CONTINUOUS, SEAMLESS, WHITE REFLECTOR. INTEGRAL LED DRIVER.	LINEAR LED ARRAY, 345 LUMENS & 7.25W / FOOT, 3500K CCT.	1
D2	FOCAL POINT	SKYDOME EDGE BMLGP	2\"/>	ONE (1) 26W, 3000 LUMEN, LED MODULE, 3500K CCT.	1,2,4
D3	FOCAL POINT	SKYDOME EDGE BMLGP	3\"/>	ONE (1) 40W, 5000 LUMEN, LED MODULE, 3500K CCT.	1,4
EM1	DUAL-LITE	EV SERIES	LOW-PROFILE EMERGENCY LIGHTING UNIT. FLAME-RATED, UV-STABLE THERMOPLASTIC HOUSING. TWO (2) SEMI-RECESSED, ADJUSTABLE EYEBALL HEADS WITH GLASS LENS. WHITE FINISH. MAINTENANCE-FREE BATTERY FOR 90 MINUTE OPERATION OF LAMPS. INTEGRAL TEST SWITCH AND AC-ON INDICATOR.	TWO (2) 1.1W LED	1
EM2	DUAL-LITE	EV SERIES	LOW-PROFILE EMERGENCY LIGHTING UNIT. FLAME-RATED, UV-STABLE THERMOPLASTIC HOUSING. TWO (2) SEMI-RECESSED, ADJUSTABLE EYEBALL HEADS WITH GLASS LENS. WHITE FINISH. MAINTENANCE-FREE BATTERY FOR 90 MINUTE OPERATION OF LAMPS. INTEGRAL TEST SWITCH AND AC-ON INDICATOR.	TWO (2) 1.1W LED	1
EM3	DUAL-LITE	PG SERIES	EXTERIOR WALL-MOUNTED EMERGENCY LIGHTING FIXTURE. DIE-CAST HOUSING WITH ALUMINUM REFLECTOR AND ACRYLIC LENS. FURNISH WITH OPTIONAL BATTERY HEATER. UL-LISTED WET LOCATION. DARK BRONZE FINISH.	TWO (2) 5W 6-VOLT MR16	1
F	WILLIAMS	SERIES 76	4\"/>	ONE (1) 48W, 5300 LUMEN LED ARRAY, 4000K CCT.	1
G4	FINELITE	HO4 - DIRECT	4\"/>	ONE (1) 26.8W, 3156 LUMEN, LED MODULE, 3500K CCT.	1,4
G8	FINELITE	HO4 - DIRECT	4\"/>	ONE (1) 53.6W, 6312 LUMEN, LED MODULE, 3500K CCT.	1,4
H	TECH LIGHTING	LD0Y	LD0Y 20-LIGHT CHANDELIER. POLISHED NICKEL FINISH (VERIFY WITH ARCHITECT). FURNISH WITH MATCHING 4\"/>	TWENTY (20) 2.8W, LED LAMPS, 2081 TOTAL LUMENS, 3000K CCT.	1,4
J	SEA GULL LIGHTING	PRATT STREET	INDUSTRIAL STYLE PENDANT, 9.5\"/>	ONE (1) 14W, 1100 LUMEN, LED LAMP, 3500K CCT.	1,4
K	LUMARK	XTOR	LOW-PROFILE EXTERIOR WALL-MOUNTED FIXTURE. ONE-PIECE DIE-CAST ALUMINUM HOUSING. IMPACT-RESISTANT, TEMPERED GLASS LENS. FORWARD THROW OPTICS. INTEGRAL LED DRIVER WITH HEAT SINK. POWDER COAT FINISH CARBON BRONZE - COORDINATE WITH ARCHITECT/BUILDING OWNER. UL-LISTED WET LOCATION.	ONE (1) 12W, 1327 LUMEN, LED LAMP, 3000K CCT.	1
R1	INVUE	ENTRI SERIES ENVY	EXTERIOR WALL-MOUNTED EMERGENCY LIGHTING FIXTURE. ONE-PIECE DIE-CAST ALUMINUM HOUSING AND FACEPLATE. SILICONE GASKETING. CLEAR, TEMPERED GLASS LENS. IES TYPE IV DISTRIBUTION. CAST ALUMINUM SUPPORT ARM. INTEGRAL 0-10V DIMMING LED DRIVER. UL-LISTED WET LOCATION. PROVIDE WITH SQUARE STRAIGHT STEEL POLE, HEIGHT AS INDICATED ON PLAN. POWDER COAT FINISH DARK BRONZE - COORDINATE EXACT COLOR WITH ARCHITECT.	ONE (1) 21 LED LIGHTBAR, 25 WATTS, 2613 LUMENS, 3000K CCT.	1
S3	KIM	SAR	ARCHITECTURAL POLE-MOUNTED FIXTURE. DIE-CAST ALUMINUM HOUSING. DIE-CAST DOOR FRAME WITH CAM LATCH, INTEGRAL HINGE, AND FULL SILICONE GASKETING. IES TYPE II DISTRIBUTION. CAST ALUMINUM SUPPORT ARM. INTEGRAL 0-10V DIMMING LED DRIVER. UL-LISTED WET LOCATION. PROVIDE WITH SQUARE STRAIGHT STEEL POLE, HEIGHT AS INDICATED ON PLAN. POWDER COAT FINISH DARK BRONZE - COORDINATE EXACT COLOR WITH ARCHITECT.	NINE (9) PICOPRISM MODULES WITH 40 LEADS. TOTAL OF 93 WATTS, 7840 LUMENS, 4000K CCT.	1
S4	KIM	SAR	ARCHITECTURAL POLE-MOUNTED FIXTURE. DIE-CAST ALUMINUM HOUSING. DIE-CAST DOOR FRAME WITH CAM LATCH, INTEGRAL HINGE, AND FULL SILICONE GASKETING. IES TYPE IV DISTRIBUTION. CAST ALUMINUM SUPPORT ARM. INTEGRAL 0-10V DIMMING LED DRIVER. UL-LISTED WET LOCATION. PROVIDE WITH SQUARE STRAIGHT STEEL POLE, HEIGHT AS INDICATED ON PLAN. POWDER COAT FINISH DARK BRONZE - COORDINATE EXACT COLOR WITH ARCHITECT.	NINE (9) PICOPRISM MODULES WITH 40 LEADS. TOTAL OF 93 WATTS, 7802 LUMENS, 4000K CCT.	1
TA	FINELITE	HO4 - SM	4\"/>	ONE (1) 26.8W, 3156 LUMEN, LED MODULE, 3500K CCT.	1,4
TB	FINELITE	HO4 - SM	4\"/>	ONE (1) 40.2W, 4734 LUMEN, LED MODULE, 3500K CCT.	1,4
X	DUAL-LITE	SEMPRA SE SERIES	COMPACT, LOW-PROFILE CEILING-MOUNTED EXIT SIGN. CAST ALUMINUM CONSTRUCTION. FINISH BLACK WITH BRUSHED ALUMINUM FACE. RED LETTERS. SINGLE/DOUBLE FACE CONFIGURATION WITH DIRECTIONAL ARROWS AS INDICATED ON PLANS. FURNISH WITH EMERGENCY OPTION FOR MAINTENANCE-FREE NICKEL-CADMIUM BATTERY FOR 2 HOUR OPERATION WITH INTEGRAL TEST SWITCH AND AC-ON LIGHT.	FOUR (4) HIGH-OUTPUT LEADS	1
REMARKS: 1 FURNISH WITH AND INSTALL ALL NECESSARY HARDWARE AND MOUNTING BRACKETS. 2 FIXTURE TO BE COORDINATED WITH ACOUSTICAL PANELS BY SAME MANUFACTURER. RE: ARCHITECT DRAWINGS FOR ACOUSTICAL PANEL INFORMATION. 3 PROVIDE LOW VOLTAGE SPOT TRACK HEADS IN LOCATIONS SHOWN ON PLAN. PROVIDE MINIMUM 10% EXTRA HEADS FOR FUTURE PLACEMENT BY OWNER. 4 FIXTURE HAS BEEN SELECTED BY OWNER. COORDINATE SUBSTITUTIONS WITH ARCHITECT.					
GENERAL NOTES (APPLICABLE TO ALL FIXTURES): 1 ALL FIXTURES UTILIZING LINEAR FLUORESCENT LAMPS SHALL COMPLY WITH NEC 410.133(G) REQUIREMENTS FOR DISCONNECTING MEANS. CONTRACTOR SHALL SUPPLY SAME IF NOT STANDARD ON FIXTURE. 2 LUMENS LISTED FOR LED FIXTURES ARE GENERALLY DELIVERED LUMENS UNLESS NOTED OTHERWISE. 3 LED FIXTURES SHALL GENERALLY BE PROVIDED AT 3500K. 4 ALL EXTERIOR LED FIXTURES ARE FULL CUTOFF UNLESS NOTED OTHERWISE. 5 ALL FIXTURES IN FOOD PREPARATION OR SERVING AREAS SHALL BE FURNISHED WITH SHATTER-RESISTANT LAMPS UNLESS LENDED. 6 ALL FIXTURES SHALL BE IC RATED OR PROVIDED WITH INSULATION SHIELDS WHEN INSTALLED IN INSULATED AREAS OF THE TRUSS SPACE. 7 FOR ALL FIXTURES INSTALLED IN RATED ASSEMBLIES, FURNISH OR INSTALL APPROVED FIRE BARRIER (E.Z. BARRIER OR TENMAT PF109 SERIES) OVER FIXTURE TO MAINTAIN 1 HOUR CEILING ASSEMBLY RATING.					

REMOVED FIXTURE TYPE R2 FROM LIGHT FIXTURE SCHEDULE

LIGHTING CONTROL PANEL SCHEDULE (LCPC1)			
RELAY	LOAD DESCRIPTION	CONTROL	NOTES
1	CORRIDOR 102	MOTION OVERRIDE SWITCH	1,2
2	CORRIDOR 101C	MOTION OVERRIDE SWITCH	1,2
3	CORRIDOR 129 N	MOTION OVERRIDE SWITCH	1,2
4	CORRIDOR 129 S	MOTION OVERRIDE SWITCH	1,2
5	EXTERIOR WALL MOUNT	PHOTOCELL / TIMECLOCK	3
6	PARKING LOT	PHOTOCELL / TIMECLOCK	3
7	PARKING LOT	PHOTOCELL / TIMECLOCK	3
8	MONUMENT SIGN	PHOTOCELL	4
GENERAL PANEL NOTES: 1 WATTSTOPPER LIGHTING LMCP SERIES PANEL OR EQUAL. 2 24-RELAY PANEL. 3 FURNISH IN SURFACE-MOUNTED NEMA 1 ENCLOSURE.			
RELAY NOTES: 1 SWITCH AND/OR SENSOR ON / TIMECLOCK OFF (AUTOMATIC BUILDING SHUTOFF AT NIGHT). 2 SWITCH OVERRIDE ON/OFF. MAXIMUM OVERRIDE TIME OF 2 HOURS. RE: PLAN FOR OVERRIDE LOCATIONS. 3 PHOTOCELL ON / TIMECLOCK OFF. 4 PHOTOCELL ON / PHOTOCELL OFF.			

LIGHTING CONTROL DEVICE SCHEDULE			
MARK	MANUFACTURER	MODEL	DESCRIPTION
CEILING SENSORS			
MD2	WATTSTOPPER	LMDC-100	DIGITAL DUAL-TECHNOLOGY CEILING SENSOR. 24V OPERATION WITH CAT5 CONNECTION.
SWITCHES			
LI#	WATTSTOPPER	LMWS-100 SERIES	DIGITAL DECORA PUSH-BUTTON SWITCH WITH LED PILOT LIGHT. CAT5 CONNECTION TO CONTROLLER. # REFERS TO QUANTITY OF BUTTONS ON FACE.
LD1	WATTSTOPPER	LMDC-101	DIGITAL DECORA DIMMING SWITCH WITH LED PILOT AND INDICATING LIGHTS. CAT5 CONNECTION TO CONTROLLER.
WALL SENSORS			
MI	WATTSTOPPER	PM-101	PASSIVE INFRARED WALL SENSOR. LINE VOLTAGE.

GENERAL NOTES:  
1. MOUNTING HEIGHTS SHOWN IN THIS DETAIL ARE TYPICAL UNLESS OTHERWISE NOTED ON THE PLANS.  
2. SEE ARCHITECTURAL ELEVATIONS FOR SPECIAL CONDITIONS. NOTIFY ARCHITECT IMMEDIATELY OF ANY CONFLICTS.  
3. ALL INSTALLATIONS SHALL COMPLY WITH ADA.  
  
VISUAL FIRE ALARM NOTIFICATION DEVICES (STROBE)  
LOCATE DEVICE SO THE BOTTOM OF THE DEVICE IS BETWEEN 80" AND 96" A.F.F. (NFPA) OR 6' BELOW CEILING, WHICHEVER IS LOWER (ADA 2010).  
  
AUDIBLE FIRE ALARM NOTIFICATION DEVICES (HORN)  
LOCATE DEVICE SO THAT THE TOP OF UNIT IS NOT MORE THAN 90" A.F.F. AND NOT LESS THAN 6' BELOW CEILING (NFPA).  
  
FIRE ALARM ACTIVATION DEVICES (PULL STATION)  
LOCATE FRONT-APPROACH DEVICES SO THAT THE HIGHEST OPERABLE PORTION OF THE DEVICE IS NOT MORE THAN 48" A.F.F. (ADA 2010) AND NOT LESS THAN 42" A.F.F. (NFPA).

POWER/COMMUNICATION DEVICES:  
OUTLETS SHALL BE LOCATED AT 16" A.F.F. TO THE BOTTOM OF THE BOX. ABOVE COUNTER DEVICES SHALL BE LOCATED AT 2" ABOVE THE BACKSPLASH OF THE COUNTER TO THE BOTTOM OF THE DEVICES. VERIFY WITH ARCHITECTURAL DETAILS.  
  
WALL-MOUNTED OPERABLE DEVICES:  
OPERABLE DEVICES SHALL BE LOCATED AT 48" A.F.F. TO THE TOP OF THE OPERABLE PORTION OF THE DEVICE.  
  
WALL-MOUNTED OPERABLE DEVICES INCLUDE, BUT ARE NOT LIMITED TO THE FOLLOWING:  
LIGHT SWITCHES, DIMMERS, CONTROLS, ETC.  
PUSH BUTTONS  
NURSE/PATIENT CALL DEVICES (INCLUDING THOSE FOR STAFF USE)  
OTHER CONTROL OR "CALL" DEVICES

## MOUNTING HEIGHTS FOR WALL-MOUNTED DEVICES

NOT TO SCALE



Civil Engineers:  
Bartlett & West  
Missouri Certificate of Authority  
#000167  
800 E 101st Terrace, Suite 350  
Kansas City, MO 64131  
888.200.6464

Structural Engineer:  
Bob D. Campbell & Co.  
Missouri Certificate of Authority  
#000442  
4338 Bellevue Ave.  
Kansas City, MO 64111  
816.531.4144

M/E/P Engineer:  
PKMR Engineers  
Missouri Certificate of Authority  
#E-2002020886  
13300 W. 98th Street  
Lenexa, KS 66215  
913.492.2400

JOB NUMBER 1 6 0 3 6

DEVELOPING POTENTIAL

227 & 235 NW EXECUTIVE WAY  
LEE'S SUMMIT, MO 64063



ISSUE DATE	No	Description	Date
9/1/21	1	Addendum #1	9/9/21
9/23/21	3	Addendum #3	9/23/21
9/24/21	4	Addendum #4	9/24/21
3/23/22	6	Addendum #6	3/23/22

ELECTRICAL  
SCHEDULES &  
DETAILS

E5.01

