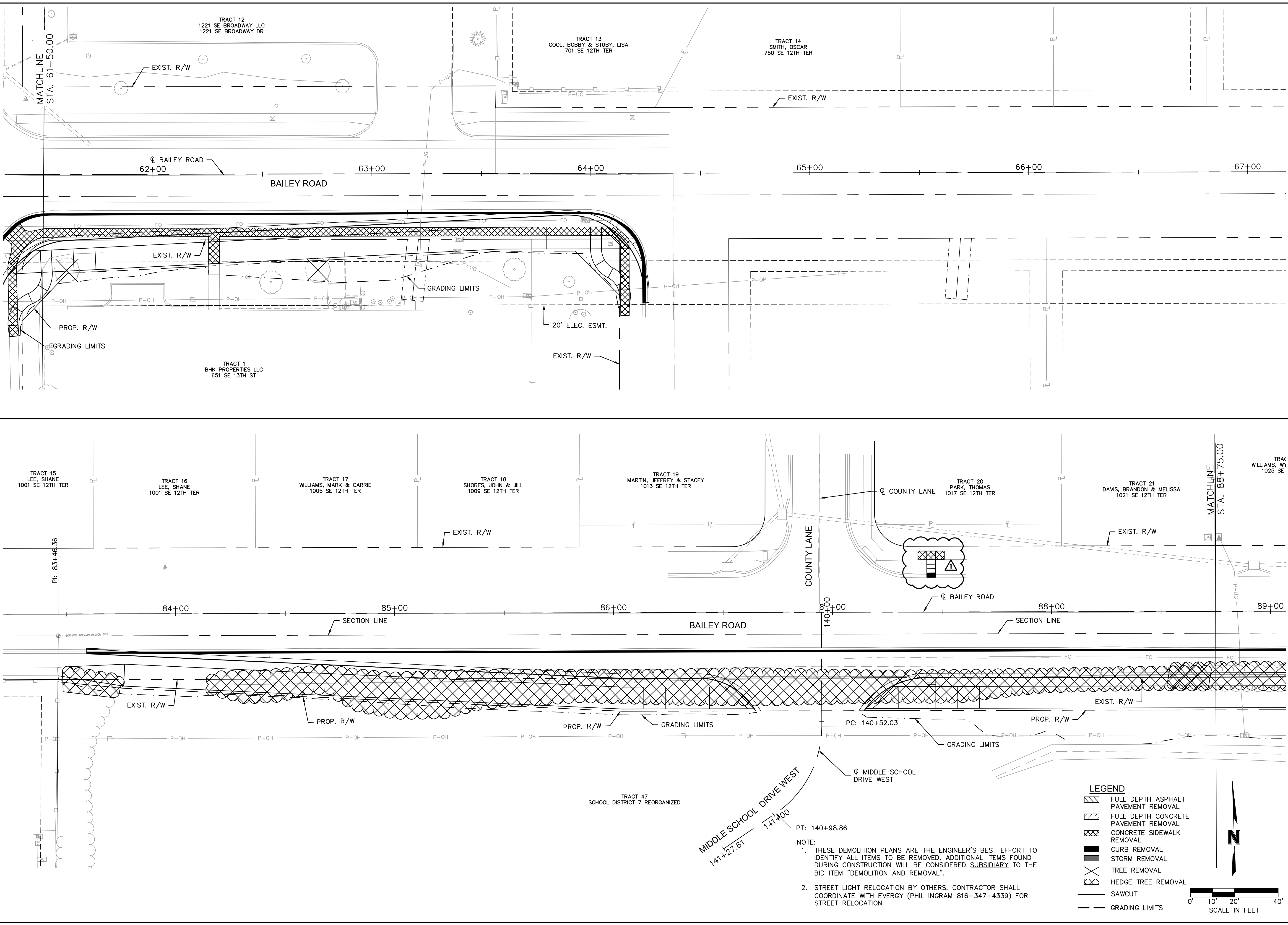


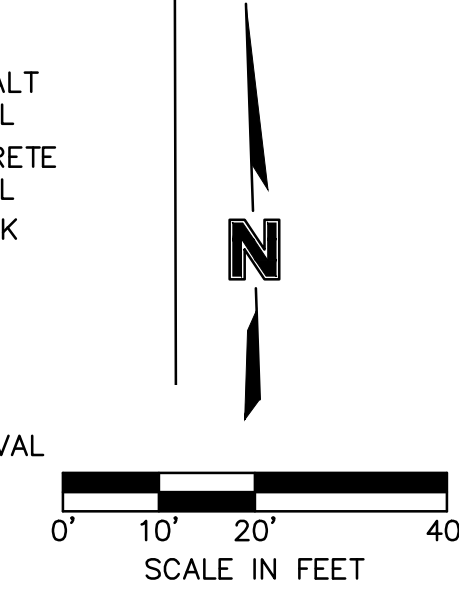
DWG: F:\2020\0001-0500\020-0103\40-Design\AutoCAD\Final Plans\Sheets\ROBR\Lee Summit Plan Set - (Century and Middle School Drives)\DEMOLITION & REMOVALS\T_DEM01_0200103.dwg
 DATE: Mar 11, 2022 8:09am XREFS: T_PBASE_0200103 T_PPATT_0200103 V_XBOU_00103 V_TOPO_00103 V_XBOU-2_00103 V_XTOPO-2_00103 T_PTBK_0200103 T_PP01_0200103 T_PSTRM_0200103
 USER: rhalter



NOTE:

1. THESE DEMOLITION PLANS ARE THE ENGINEER'S BEST EFFORT TO IDENTIFY ALL ITEMS TO BE REMOVED. ADDITIONAL ITEMS FOUND DURING CONSTRUCTION WILL BE CONSIDERED SUBSIDIARY TO THE BID ITEM "DEMOLITION AND REMOVAL".
2. STREET LIGHT RELOCATION BY OTHERS. CONTRACTOR SHALL COORDINATE WITH EVERGY (PHIL INGRAM 816-347-4339) FOR STREET RELOCATION.

- LEGEND**
- FULL DEPTH ASPHALT PAVEMENT REMOVAL
 - FULL DEPTH CONCRETE PAVEMENT REMOVAL
 - CONCRETE SIDEWALK REMOVAL
 - CURB REMOVAL
 - STORM REMOVAL
 - TREE REMOVAL
 - HEDGE TREE REMOVAL
 - SAWCUT
 - GRADING LIMITS



DWG: F:\2020\0001-0500\020-0103\40-Design\AutoCAD\Final Plans\Sheets\ROBR\Lee Summit Plan Set - (Century and Middle School Drives)\DEMOLITION & REMOVALS\T_DEM01_0200103.dwg
 DATE: Mar 11, 2022 8:09am XREFS: T_PBASE_0200103 T_PPATT_0200103 V_XBOU_00103 V_TOPO_00103 V_XBOU-2_00103 V_XTOPO-2_00103 T_PTBK_0200103 T_PP01_0200103 T_PSTRM_0200103
 USER: rhalter

Olsson Engineering - MO State Certificate of Authority #001592
 7301 West 133rd Street, Suite 200 TEL: 913.381.1170
 Overland Park, KS 66213-4750 FAX: 913.381.1174 www.olsson.com

RYAN B. FLEMING
 MO. NO. PE-2002003161

REV. NO.	DATE	REVISIONS DESCRIPTION	BY
1	03/11/2022	ASI #47	RPH

DEMOLITION & REMOVALS
 BAILEY ROAD

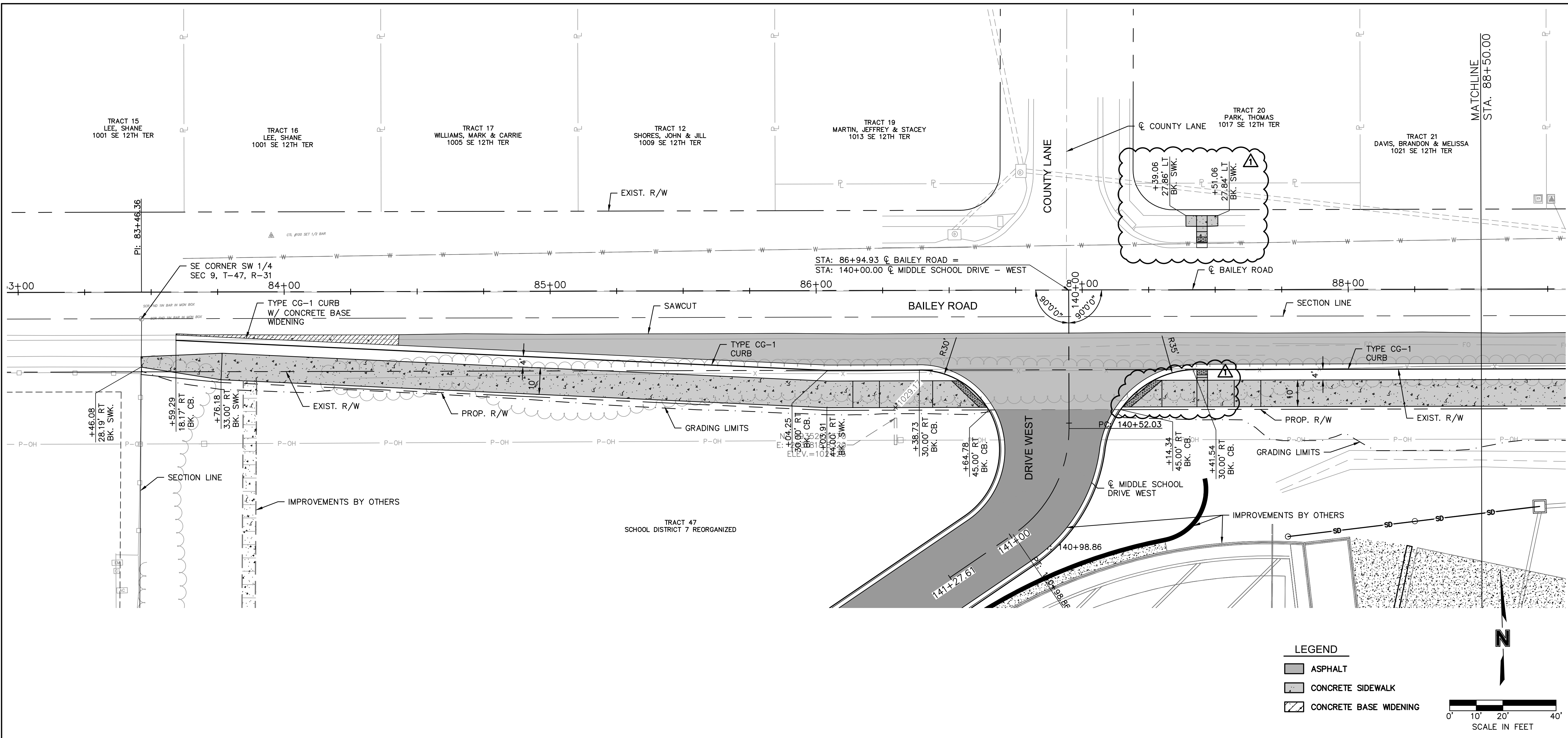
LEE'S SUMMIT MIDDLE SCHOOL #4
 BAILEY ROAD PUBLIC IMPROVEMENTS

LEE'S SUMMIT, MISSOURI

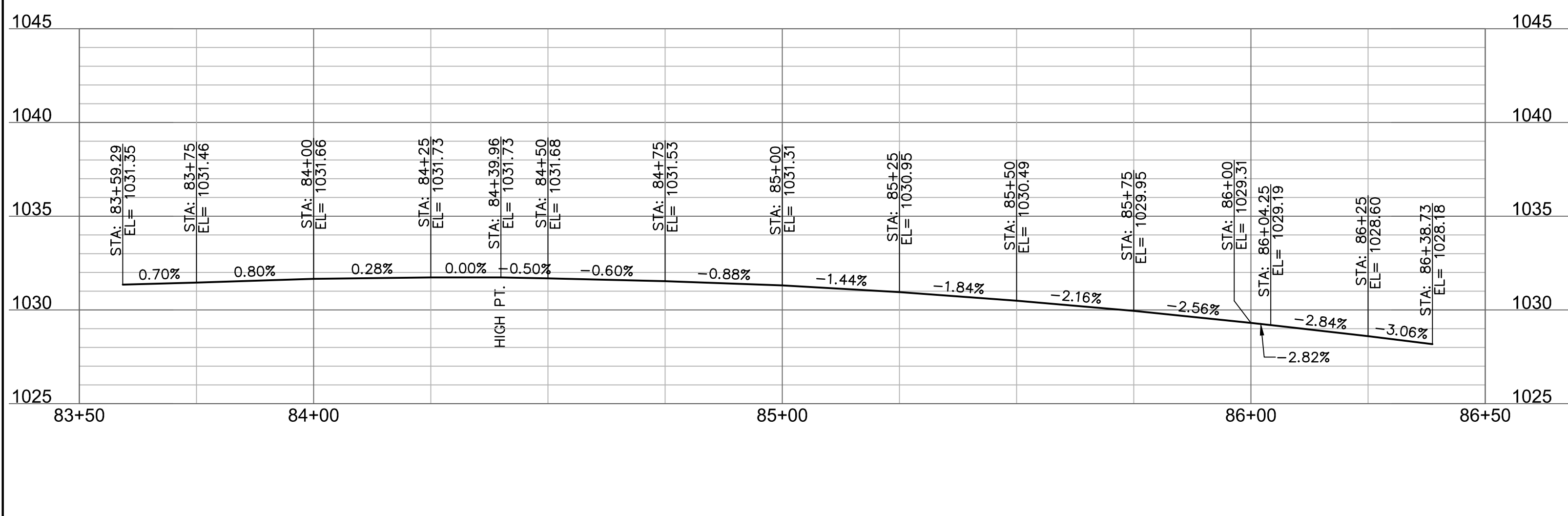
C.O.A. NO.: 001592
 DRAWN BY: MLW
 CHECKED BY: RPH
 APPROVED BY: RBE
 QA/QC BY: RBE
 PROJECT NO.: 020-0103
 DWG NO.: T_DEM01_0200103
 DATE: 2021-02-01

SHEET
 13 OF 101

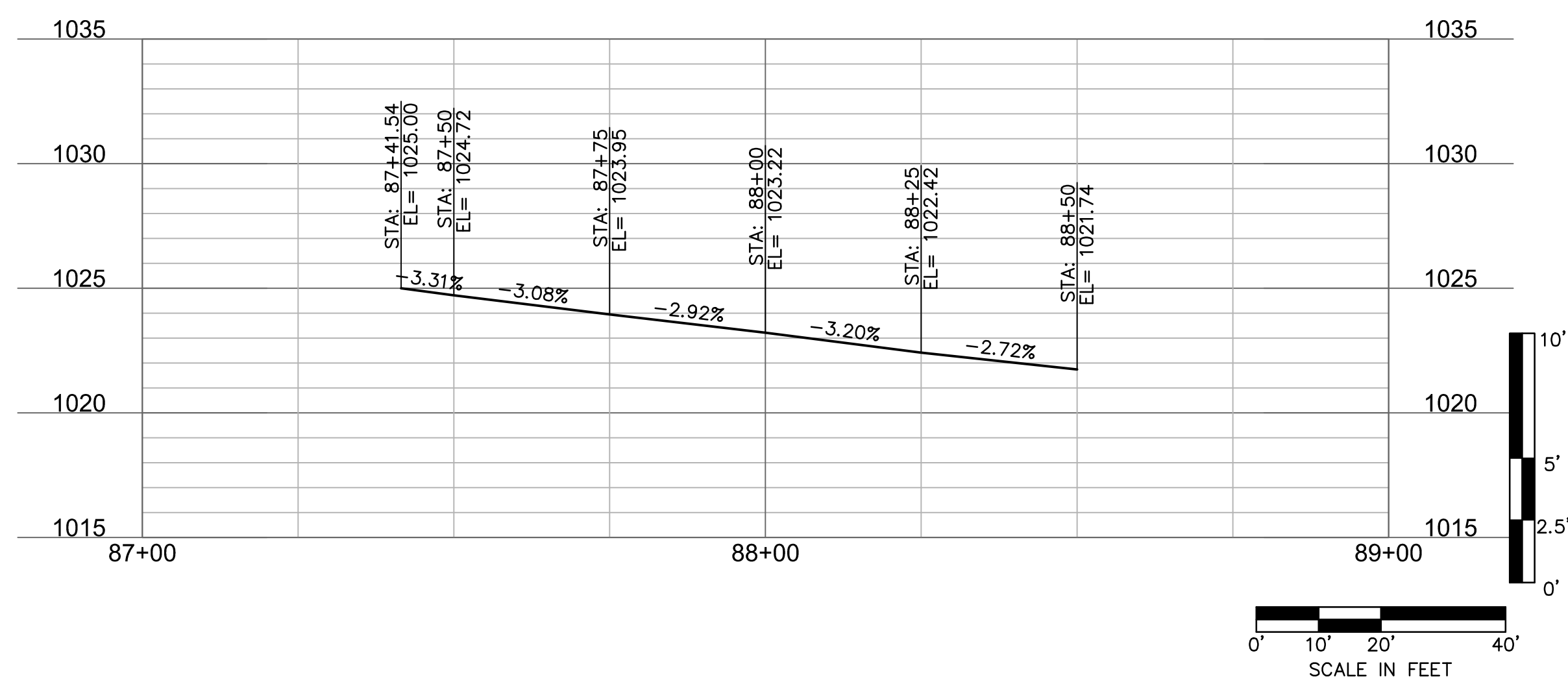
DWG: F:\2020\0001-0500\020-0103\40-Design\AutoCAD\Final Plans\Sheets\RD\Lee Summit Plan Set - (Century and Middle School Drives)\PLAN & PROFILES\BAILEY ROAD\T_RPP04_0200103.dwg
 DATE: Mar 11, 2022 8:11am XREFS: T_PBASE_0200103 V_XTOPO-2_00103 V_XTOPO-2_00103 V_TOPO_00103 C_PBASE_0200103 T_PPAT_0200103 T_PPAT_0200103
 USER: rholter T_PPROF_0200103

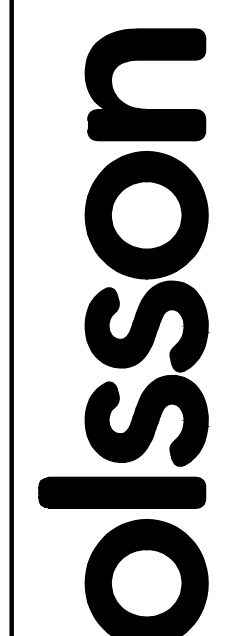


BAILEY ROAD RIGHT EDGE OF PAVEMENT

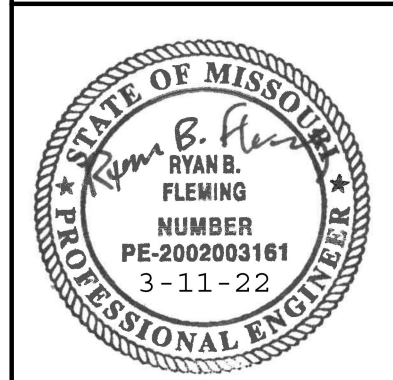


BAILEY ROAD RIGHT EDGE OF PAVEMENT





Olsson Engineering - MO State Certificate of Authority #001592
 7301 West 133rd Street, Suite 200 TEL: 913.381.1170
 Overland Park, KS 66213-4760 FAX: 913.381.1174 www.olsson.com



RYAN B. FLEMING
 MO. NO. PE-2002003161

REV. NO.	DATE	REVISIONS DESCRIPTION	BY
1	03/11/2022	ASI #47	RPH

PLAN & EDGE OF PAVEMENT PROFILE
 BAILEY ROAD

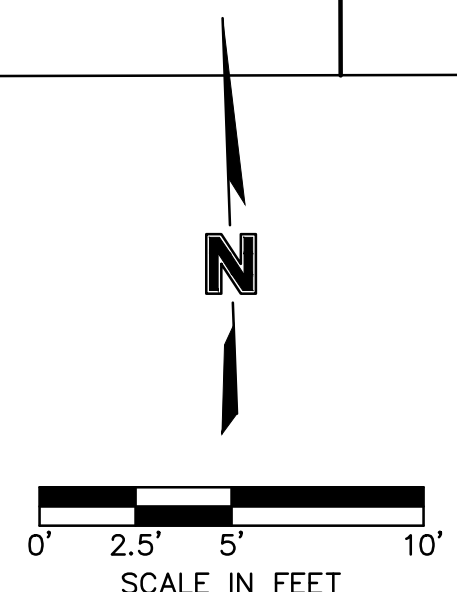
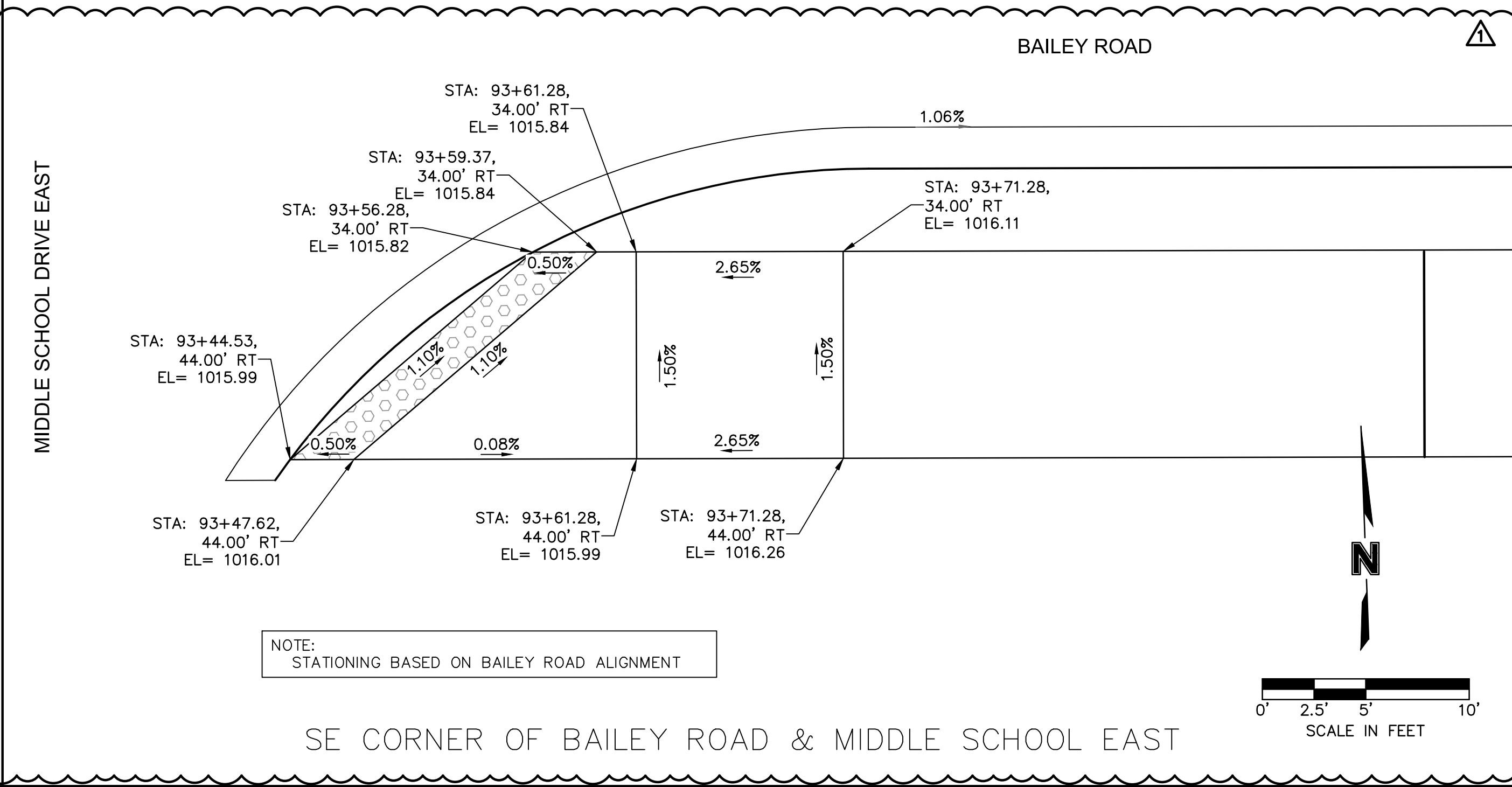
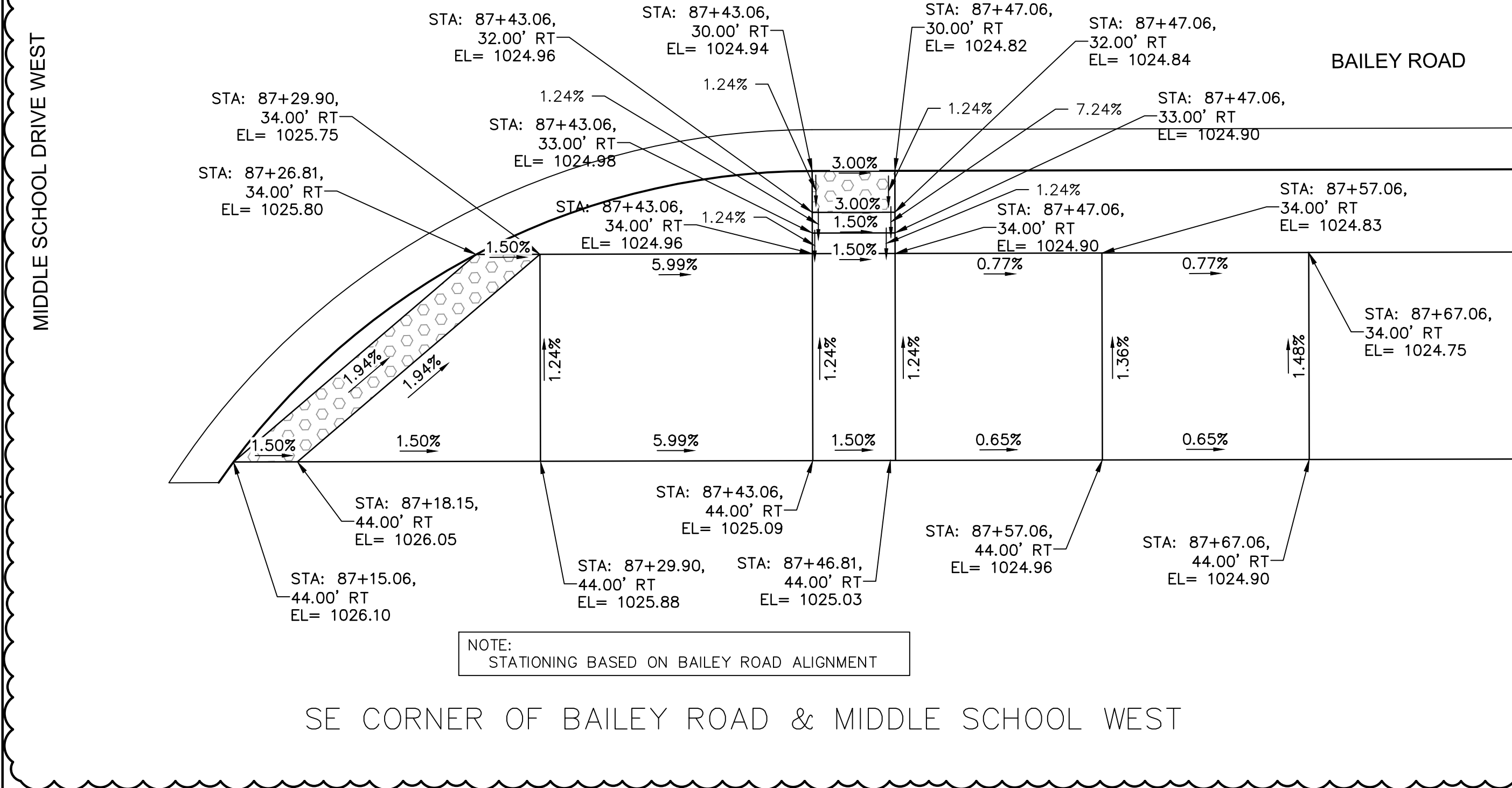
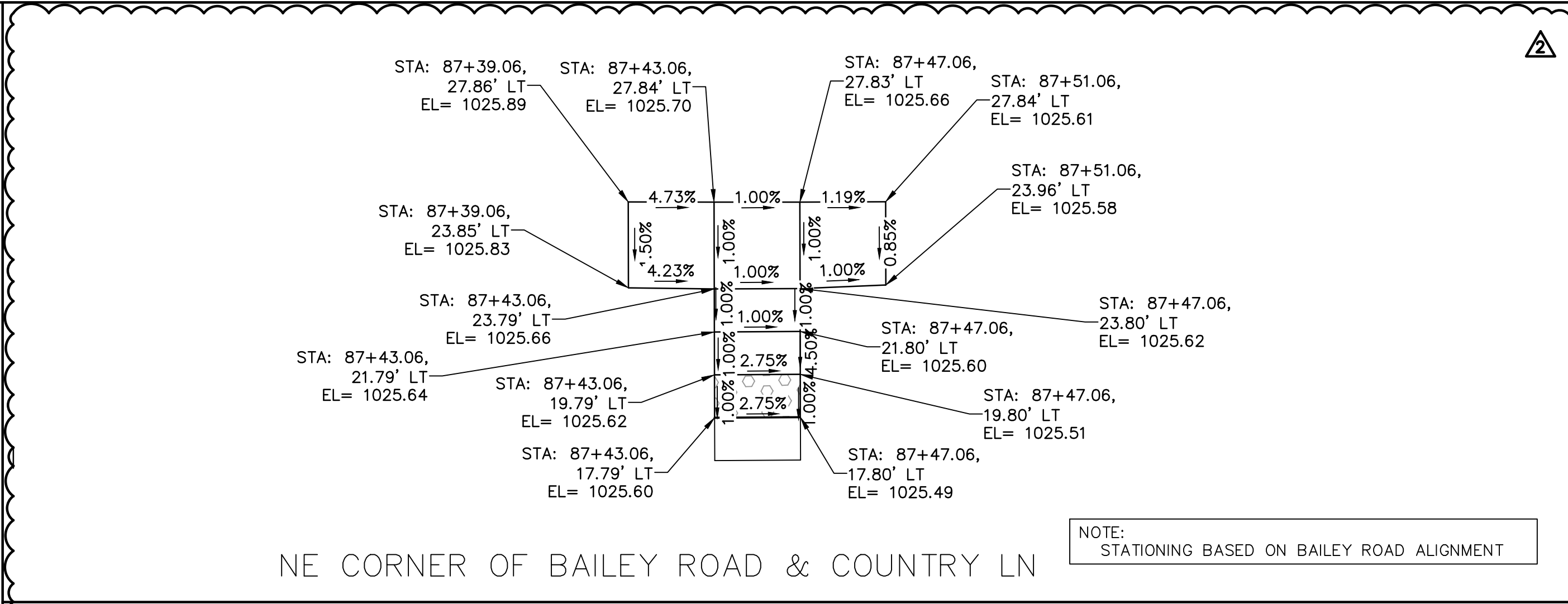
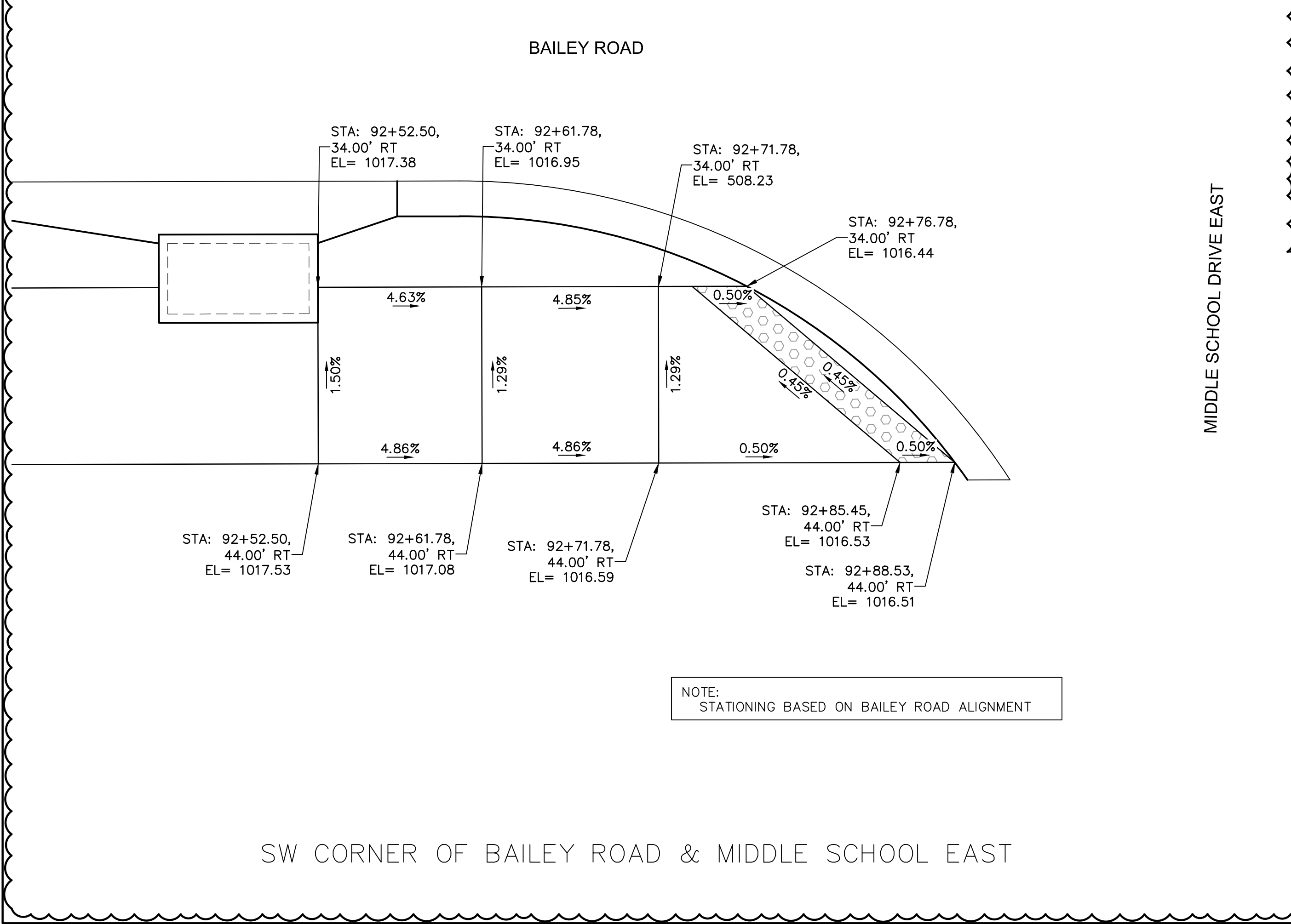
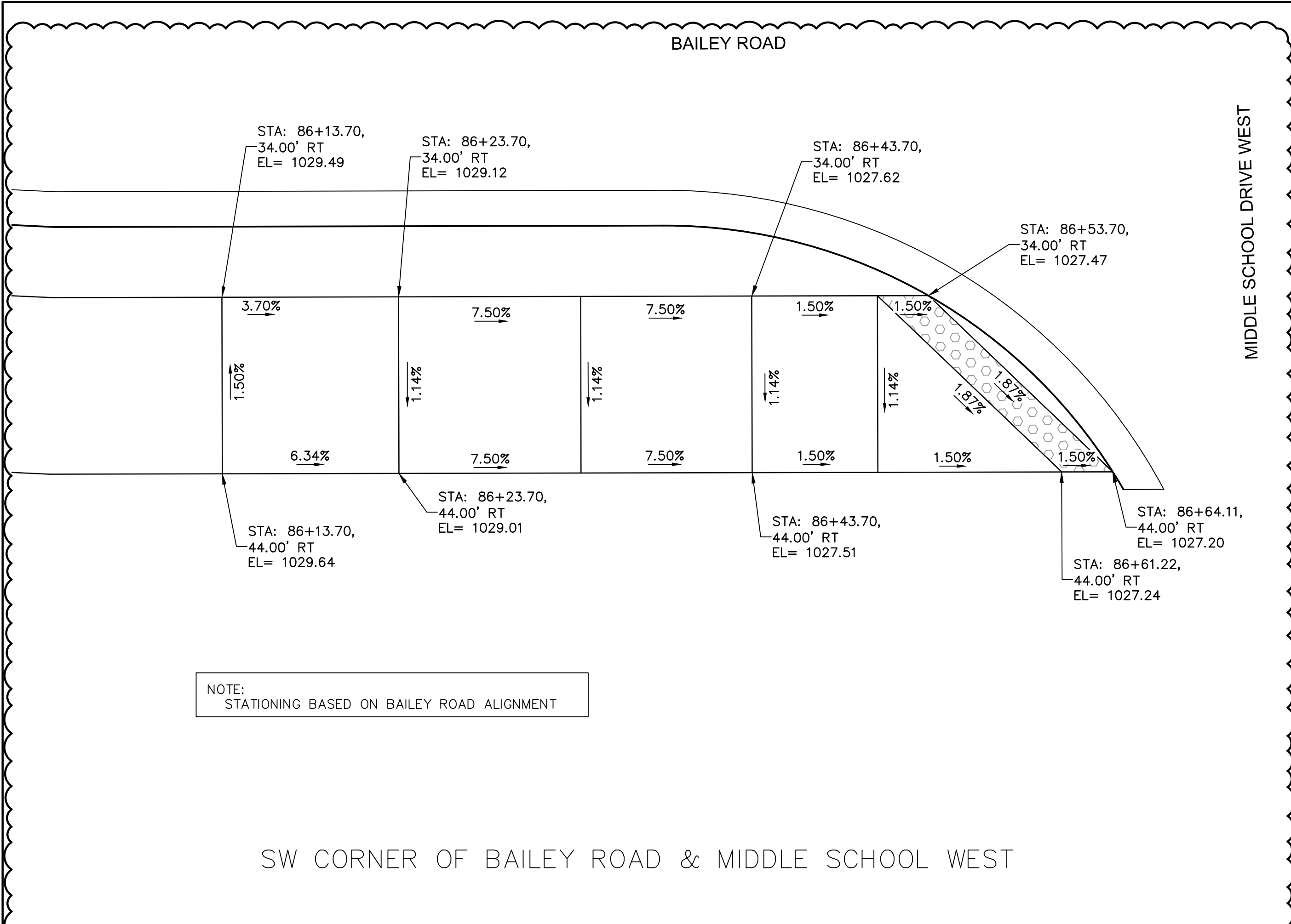
LEE'S SUMMIT MIDDLE SCHOOL #4
 BAILEY ROAD PUBLIC IMPROVEMENTS

2021

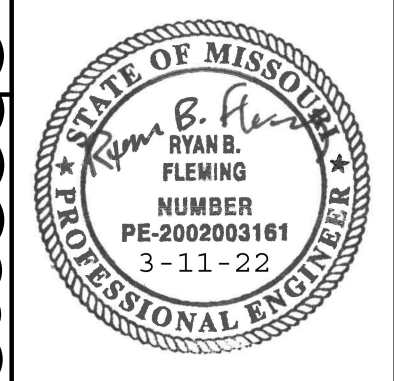
C.O.A. NO.: 001592
 DRAWN BY: MLW
 CHECKED BY: RPH
 APPROVED BY: RBE
 QA/QC BY: RBE
 PROJECT NO.: 020-0103
 DWG NO.: T_RPP04_0200103
 DATE: 2021-02-01

SHEET
27 OF 101

DWG: F:\2020\0001-0500\020-0103\40-Design\AutoCAD\Final Plans\Sheets\RD\Lee Summit Plan Set - (Century and Middle School Drives)\SIDEWALK RAMP LAYOUTS\I_SWK01_0200103_LS.dwg
 DATE: Mar 11, 2022 8:12am XREFS: I_PBASE_0200103 I_PSTRM_0200103 I_PTLK_0200103 I_PPATTI_0200103 I_V_TOPO_00103
 USER: rholler



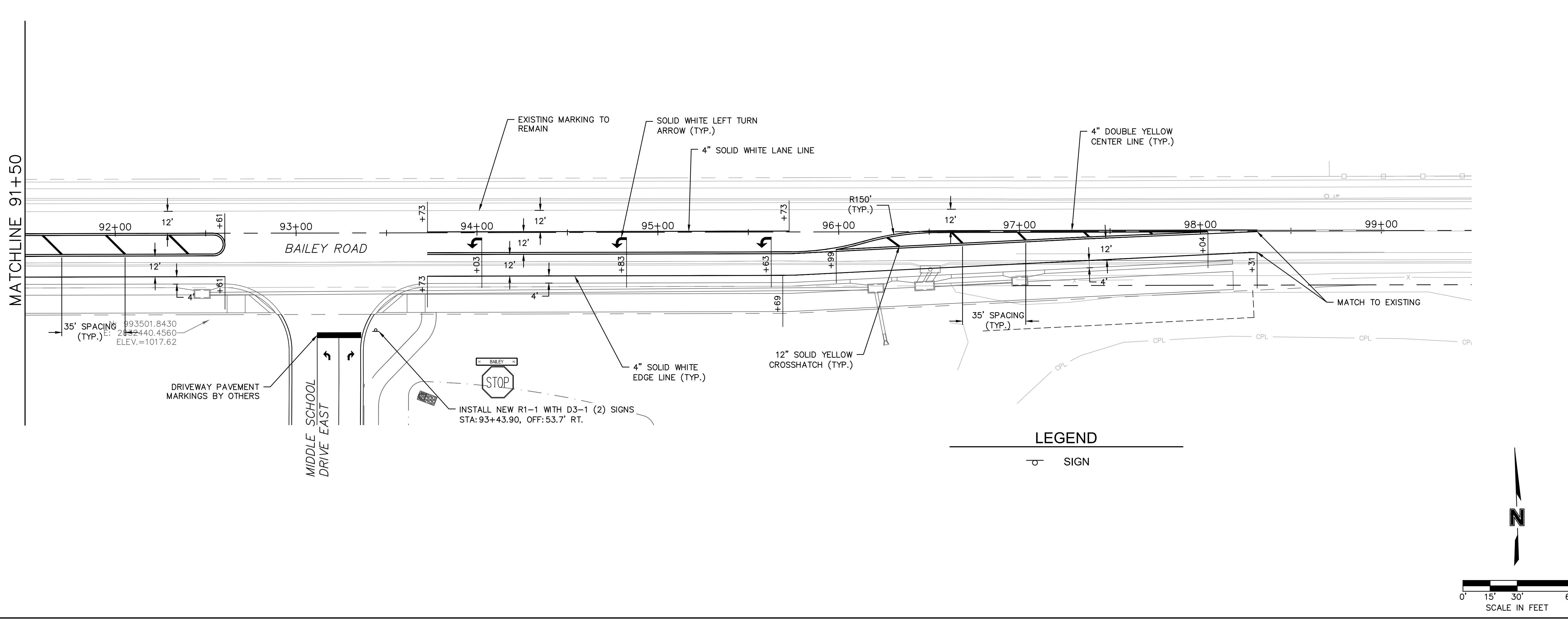
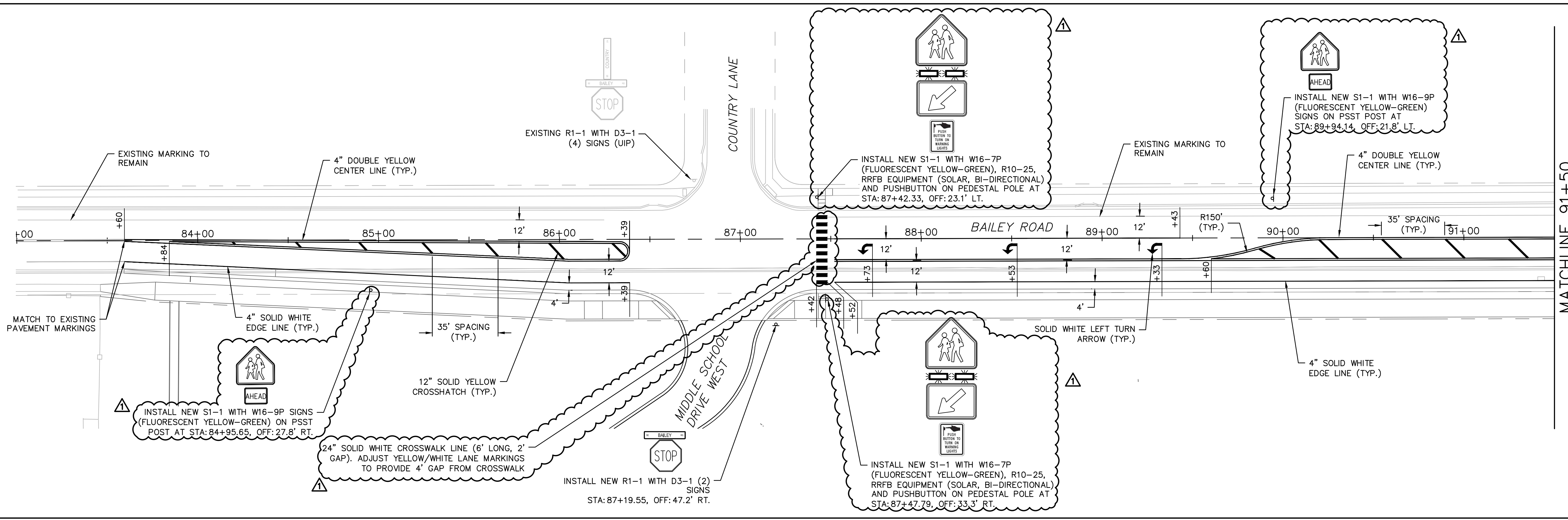
olsson
 Olsson Engineering - MO State Certificate of Authority #001992
 7301 West 133rd Street, Suite 200 TEL 913.381.1170
 Overland Park, KS 66213-4760 FAX 913.381.1174 www.ollson.com



REV. NO.	DATE	REVISIONS DESCRIPTION
1	08/25/2021	ASI #29
2	03/11/2022	ASI #47

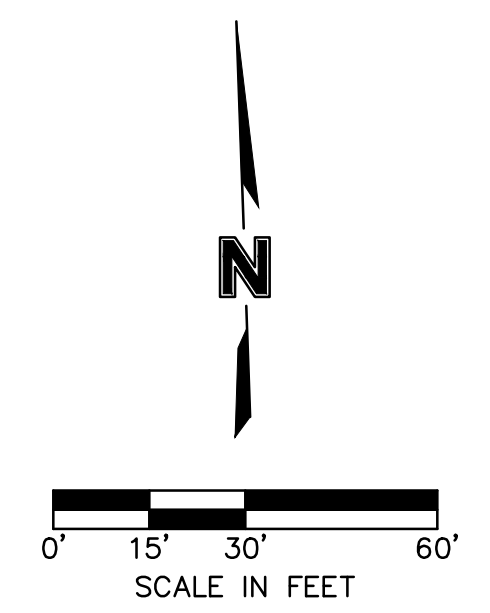
RYAN B. FLEMING
 MO. NO. PE-2002003161
 BY: RPH
 DATE: 03/11/2022
 PROJECT NO.: 020-0103
 DWG NO.: I_SWK01_0200103_LS
 DATE: 2021-02-01
 SHEET 41 OF 101
 LEE'S SUMMIT MIDDLE SCHOOL #4
 BAILEY ROAD PUBLIC IMPROVEMENTS
 LEE'S SUMMIT, MISSOURI

DWG: \\lfe-oma-fst\k_c_projects\2020\0001-0500\020-0103\40-Design\AutoCAD\Final Plans\Sheets\JTTC\PAVEMENT MARKING & SIGNING PLAN\LEE'S SUMMIT SET\F_SAS_0200103.dwg
 DATE: Mar 11, 2022 8:01am XREFS: I_PSTRM_0200103 F_PBASE_0200103 V_XBOU_2_00103 V_XBOU_2_00103 V_XBOU_2_00103 V_XBOU_2_00103
 USER: jberry F_SAS-BASE_0200103 T_PBASE_0200103 C_PBASE_0200103



LEGEND

○ SIGN

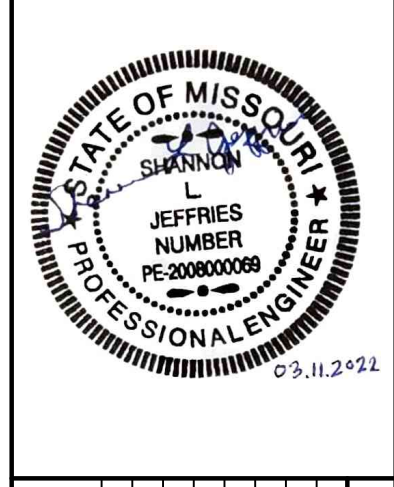


MATCHLINE 91+50

MATCHLINE 91+50

olsson

Olsson Engineering - MO State Certificate of Authority #001592
 7301 West 133rd Street, Suite 200 TEL: 913.381.1170
 Overland Park, KS 66213-4750 FAX: 913.381.1174 www.ollson.com



REV. NO.	DATE	REVISIONS DESCRIPTION	BY
1	3/11/2022	ASI #47	JAB

PAVEMENT MARKING AND SIGNING PLAN
BAILEY ROAD
 LEE'S SUMMIT MIDDLE SCHOOL #4
 PUBLIC ROAD IMPROVEMENTS
 LEE'S SUMMIT, MISSOURI

2021

SHEET
 80 OF 101

C.O.A. NO.:	001592
DRAWN BY:	JRC
CHECKED BY:	JAB
APPROVED BY:	SLJ
QA/QC BY:	THE
PROJECT NO.:	020-0103
DWG NO.:	F_SAS_0200103
DATE:	3/11/2022