

# WOODLAND OAKS

## Lots 1 thru 42

### SANITARY SEWER CONSTRUCTION PLANS

#### Section 27, Township 48 North, Range 31 West

#### LEE'S SUMMIT, JACKSON COUNTY, MISSOURI

#### CONSTRUCTION AND DESIGN NOTES:

##### SANITARY SEWERS:

- SANITARY SEWER PIPE SHALL BE POLY VINYL CHLORIDE (PVC), SDR-26, UNLESS NOTED OTHERWISE IN THESE PLANS.
- HOUSE SEWER LATERALS SHALL BE 4 INCH PVC, SDR-26. LATERALS SHALL BE CONSTRUCTED USING A TOP ORIENTED "WYE" AT THE SEWER STATION SHOWN IN THESE PLANS. LATERALS SHALL BE LAID AT A GRADE OF 2.0% FROM THE SEWER MAIN TO THE STREET RIGHT-OF-WAY LINE OR EASEMENT LINE AS REPRESENTED BY THE LATERAL LENGTH SHOWN IN THESE PLANS. THE ELEVATION SHOWN FOR THE END OF THE LATERAL IN THESE PLANS IS APPROXIMATE. THE ACTUAL ELEVATION SHALL BE DETERMINED BY THE FLOW LINE ELEVATION OF THE SEWER MAIN, THE FITTINGS AND GRADE OF THE SEWER LATERAL.
- THE CONTRACTOR SHALL MAINTAIN A LOG OF THE "AS BUILT" STATION AND LENGTH OF EACH HOUSE LATERAL AND SHALL PROVIDE ENGINEERING SOLUTIONS, L.L.C. WITH A COPY OF SAID LOG UPON COMPLETION OF SEWER CONSTRUCTION.
- ALL MANHOLES INSTALLED IN THE STREET RIGHT-OF-WAY SHALL BE FINISHED 1/2" PER FOOT ABOVE THE NEAREST ADJACENT BACK OF CURB
- A STAKE SHALL BE PLACED AT THE END OF EACH WYE CONNECTION WITH THE END ELEVATION WRITTEN ON THE STAKE
- FILL AREAS SHALL HAVE 18" OF COMPACTED FILL IN PLACE PRIOR TO TRENCHING
- A TRENCH CHECK CONSISTING OF FLOWABLE FILL MUST BE INSTALLED ON EVERY PRIVATE LATERAL.

##### GENERAL NOTE:

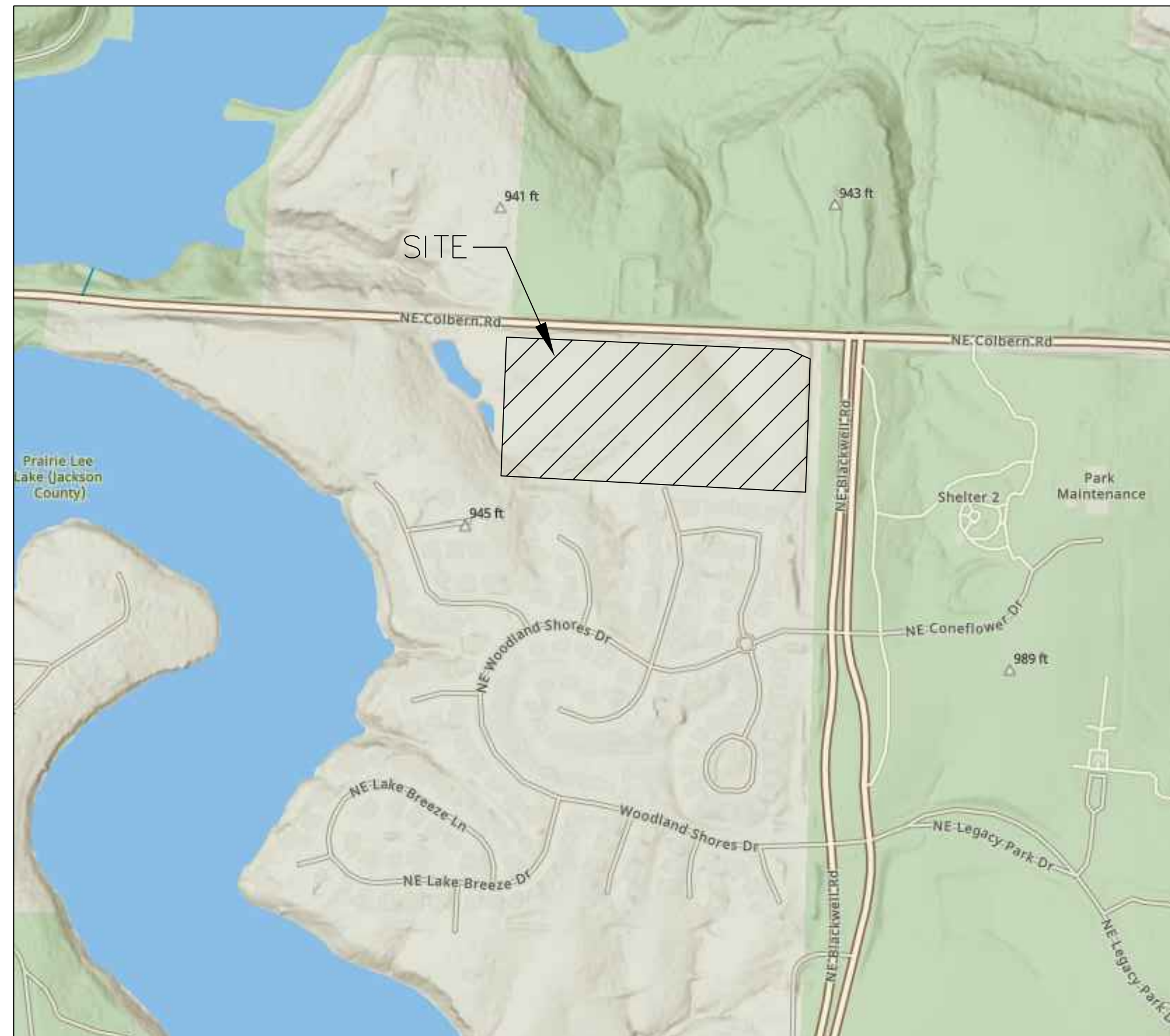
- ALL CONSTRUCTION SHALL CONFORM TO THE CITY OF LEE'S SUMMIT DESIGN AND CONSTRUCTION MANUAL AS ADOPTED BY ORDINANCE 5813.
- TRENCH CHECKS SHALL BE INSTALLED AT ALL SANITARY WYES LOCATION.

##### OIL - GAS WELLS

ACCORDING TO EDWARD ALTON MAY JR'S ENVIRONMENTAL IMPACT STUDY OF ABANDONED OIL AND GAS WELLS IN LEE'S SUMMIT, MISSOURI IN 1995, THERE ARE NOT OIL AND GAS WELLS WITHIN 185 FEET OF THE PROPERTY AS SURVEYED HEREON.

##### FLOOD INFORMATION:

The property is located in Zone "X" areas outside the 100 year flood plain per FEMA Map 29095C0430G, dated January 20, 2017



#### INDEX OF SHEETS:

- C.400 ~ SANITARY SEWER COVER SHEET
- C.401 ~ SANITARY SEWER GENERAL LAYOUT
- C.402 ~ SANITARY SEWER PLAN & PROFILE
- C.403 ~ SANITARY SEWER PLAN & PROFILE
- C.404 ~ SANITARY SEWER PLAN & PROFILE
- C.405 ~ SANITARY SEWER PLAN & PROFILE
- C.406 ~ SANITARY SEWER DETAILS

#### Summary of Quantities:

ITEM AND DESCRIPTION	UNIT	ESTIMATED QUANTITY
<b>SANITARY</b>		
2" PVC HDPE SDR-11 FORCEMAIN	LF	3,900.28
1.25" HDPE SDR-11 SERVICE LINE	LF	1,090.00
1.25" LATERAL ASSEMBLY	EA	42.00
2" PVC HDPE SDR-11 BENDS	EA	3.00

#### UTILITY COMPANIES:

THE FOLLOWING LIST OF UTILITY COMPANIES IS PROVIDED FOR INFORMATION ONLY. WE DO NOT OFFER ANY GUARANTEE OR WARRANTY THAT THIS LIST IS COMPLETE OR ACCURATE. THE CONTRACTOR SHALL BE RESPONSIBLE FOR CONTACTING ALL UTILITY COMPANIES THAT MAY BE AFFECTED BY THE PROPOSED CONSTRUCTION AND VERIFYING THE ACTUAL LOCATION OF EACH UTILITY LINE. THE CONTRACTOR SHALL NOTIFY ENGINEERING SOLUTIONS AT 816.623.9888 OF ANY CONFLICT WITH PROPOSED IMPROVEMENTS.

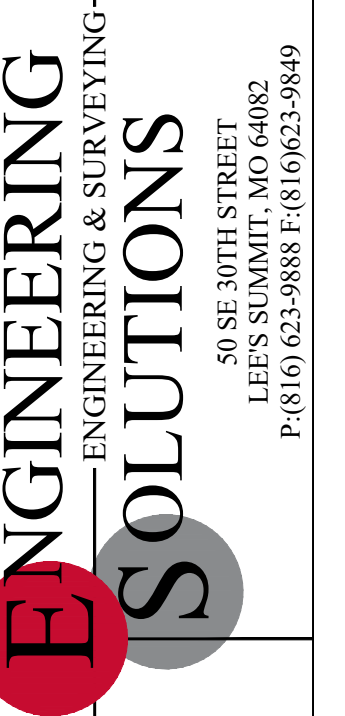
EVERGY ~ 298-1196  
 MISSOURI GAS ENERGY ~ 756-5261  
 SOUTHWESTERN BELL TELEPHONE ~ 761-5011  
 COMCAST CABLE ~ 795-1100  
 WILLIAMS PIPELINE ~ 422-6300  
 CITY OF LEE'S SUMMIT PUBLIC WORKS ~ 969-1800  
 CITY OF LEE'S SUMMIT DEVELOPMENT ENGINEERING INSPECTION AT 816.969.1200  
 CITY OF LEE'S SUMMIT WATER UTILITIES ~ 969-1900  
 MISSOURI ONE CALL (DIG RITE) ~ 1-800-344-7483

#### LEGEND:

- B/L - BUILDING SET-BACK
- C/A - COMMON AREA
- D/E - DRAINAGE EASEMENT
- FND. - FOUND
- L/E - LANDSCAPE EASEMENT
- L.N.A. - LIMITS OF NO ACCESS
- R/W - RIGHT OF WAY
- SAN - SANITARY SEWER LINE
- S/W - SIDEWALK
- U/E - UTILITY EASEMENT
- W - WATER LINE
- ST - STORM SEWER LINE

#### ENGINEER'S CERTIFICATION:

I HEREBY CERTIFY THAT THIS PROJECT HAS BEEN DESIGNED AND THESE PLANS PREPARED IN ACCORDANCE WITH THE CURRENT DESIGN CRITERIA OF THE CITY OF LEE'S SUMMIT, MISSOURI AND THE STATE OF MISSOURI. I FURTHER CERTIFY THAT THESE PLANS WERE DESIGNED IN ACCORDANCE TO AASHTO STANDARDS.

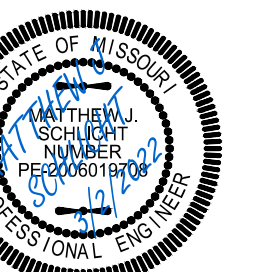


Professional Registration  
 Missouri  
 Engineering 2005002186-D  
 Surveying 2005008319-D  
 Kansas  
 Engineering E-1685  
 Surveying LS-218  
 Oklahoma  
 Engineering 6254  
 Nebraska  
 Engineering CA2821

Part of the Southeast 1  
 Section 27, Township 48 North, Range 31 West  
 Lee's Summit, Jackson County, Missouri

Project:  
 WOODLAND OAKS  
 LSHO  
 Issue Date:  
 February 25, 2021

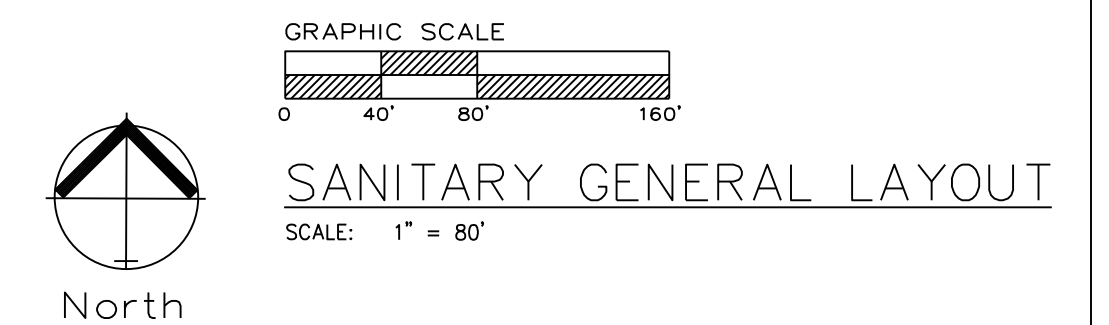
Cover Sheet  
 Construction Plans for:  
 WOODLAND OAKS  
 Lots 1 thru 42  
 Lee's Summit, Jackson County, Missouri



Matthew J. Schlicht  
 MO PE 2006019708  
 KS PE 19071  
 OK PE 25226  
 NE PE E-14335

- REVISIONS
- REV. 5/5/2021
  - REV. 5/26/2021
  - REV. 6/22/2021
  - REV. 6/29/2021





**GENERAL NOTE:**  
 1 - ALL CONSTRUCTION SHALL CONFORM TO THE CITY OF LEE'S SUMMIT DESIGN AND CONSTRUCTION MANUAL AS ADOPTED BY ORDINANCE 5813.  
 2 - TRENCH CHECKS SHALL BE INSTALL AT ALL SANITARY WYES LOCATION.



Professional Registration  
 Missouri  
 Engineering 2005002186-D  
 Surveying 2005008319-D  
 Kansas  
 Engineering E-1685  
 Surveying LS-218  
 Oklahoma  
 Engineering S254  
 Nebraska  
 Engineering CA2821

Part of the Southeast 1  
 Section 27, Township 48 North, Range 31 West  
 Lee's Summit, Jackson County, Missouri

Project:  
 WOODLAND OAKS  
 LSHO  
 Issue Date:  
 February 25, 2021

Sanitary Sewer General Layout  
 Construction Plans for:  
 WOODLAND OAKS  
 Lots 1 thru 42  
 Lee's Summit, Jackson County, Missouri



Matthew J. Schlicht  
 MO PE 2006019708  
 KS PE 19071  
 OK PE 25226  
 NE PE E-14335

REVISIONS

REV. 5/5/2021
REV. 5/26/2021
REV. 6/22/2021
REV. 6/29/2021



**GENERAL NOTE:**  
 1 - ALL CONSTRUCTION SHALL CONFORM TO THE CITY OF LEE'S SUMMIT DESIGN AND CONSTRUCTION MANUAL AS ADOPTED BY ORDINANCE 5813.  
 2 - TRENCH CHECKS SHALL BE INSTALLED AT ALL SANITARY WYES LOCATION.  
 3 - COMPACTED FILL SHALL BE PLACED TO A MINIMUM 18" ABOVE THE TOP OF THE PIPE PRIOR TO INSTALLATION.

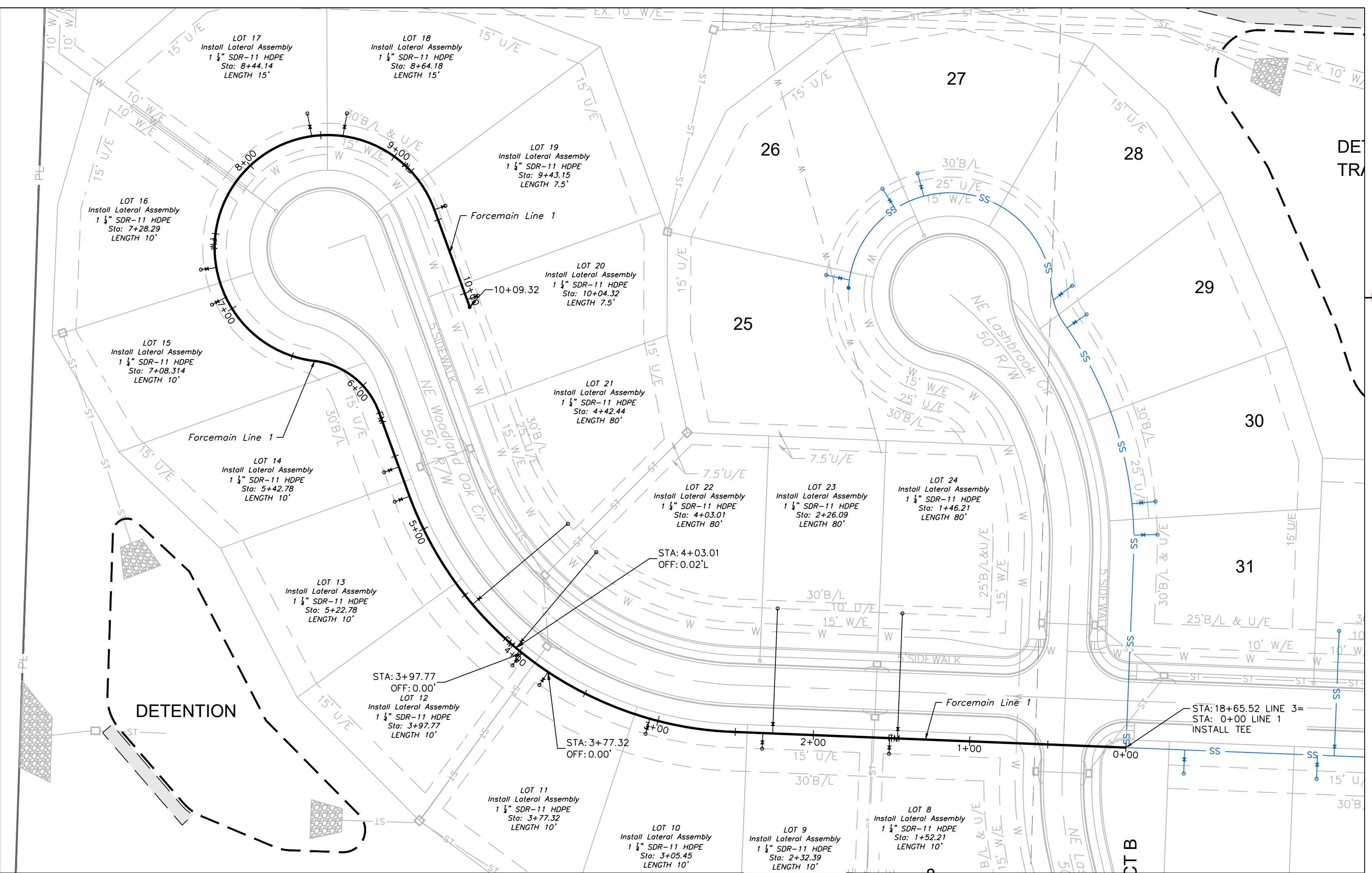


GRAPHIC SCALE  
 0 25 50 100'

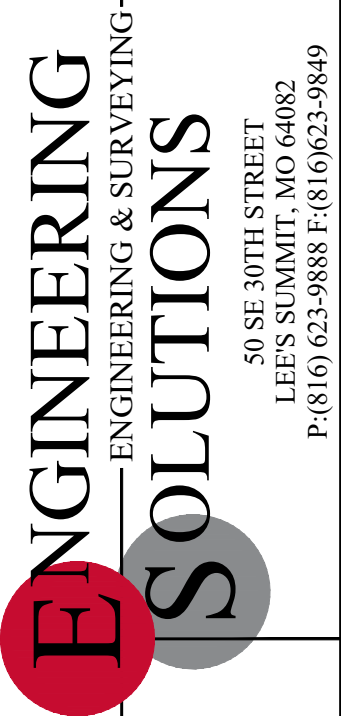
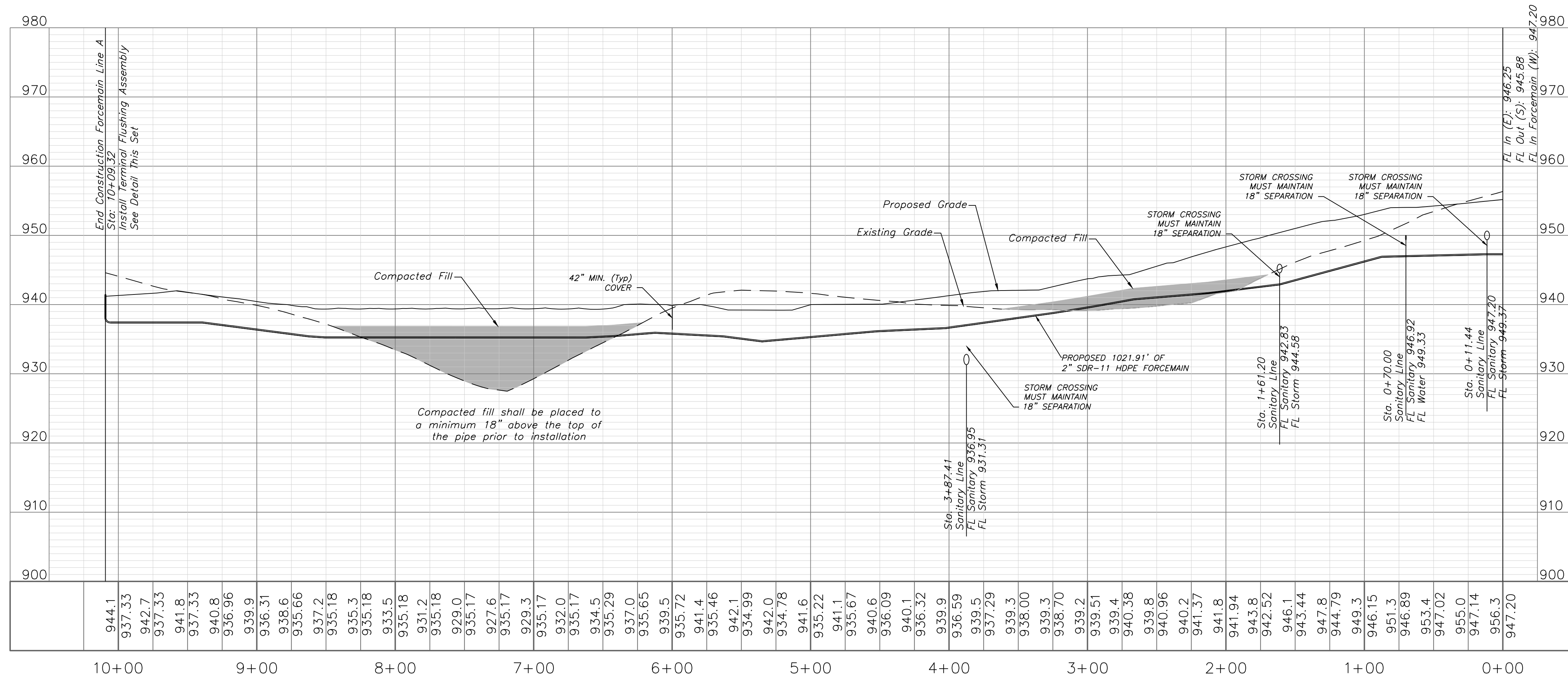
**SANITARY PLAN & PROFILE**

SCALE: 1" = 50'

**NOTE:**  
 ALL LOTS WILL BE FORCEMAIN AND REQUIRE GRINDER PUMPS.



**FORCEMAIN LINE 1**



Professional Registration  
 Missouri  
 Engineering 2005002186-D  
 Surveying 200500319-D  
 Kansas  
 Engineering E-1685  
 Surveying LS-218  
 Oklahoma  
 Engineering S254  
 Nebraska  
 Engineering CA2821

Part of the Southeast 1  
 Section 27, Township 48 North, Range 31 West  
 Lee's Summit, Jackson County, Missouri

Project:  
 WOODLAND OAKS  
 LSHO  
 Issue Date:  
 February 25, 2021

Sanitary Plan and Profile  
 Construction Plans for:  
 WOODLAND OAKS  
 Lots 1 thru 42  
 Lee's Summit, Jackson County, Missouri



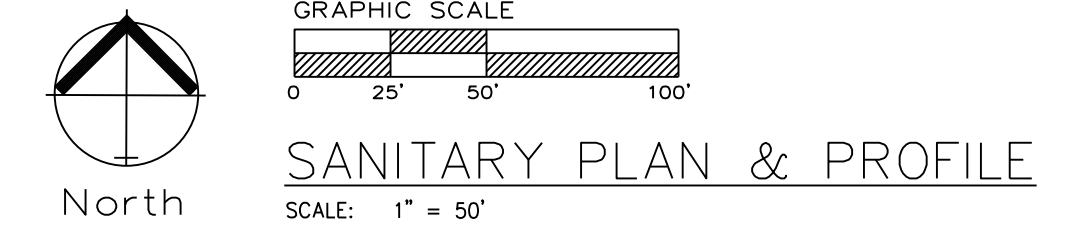
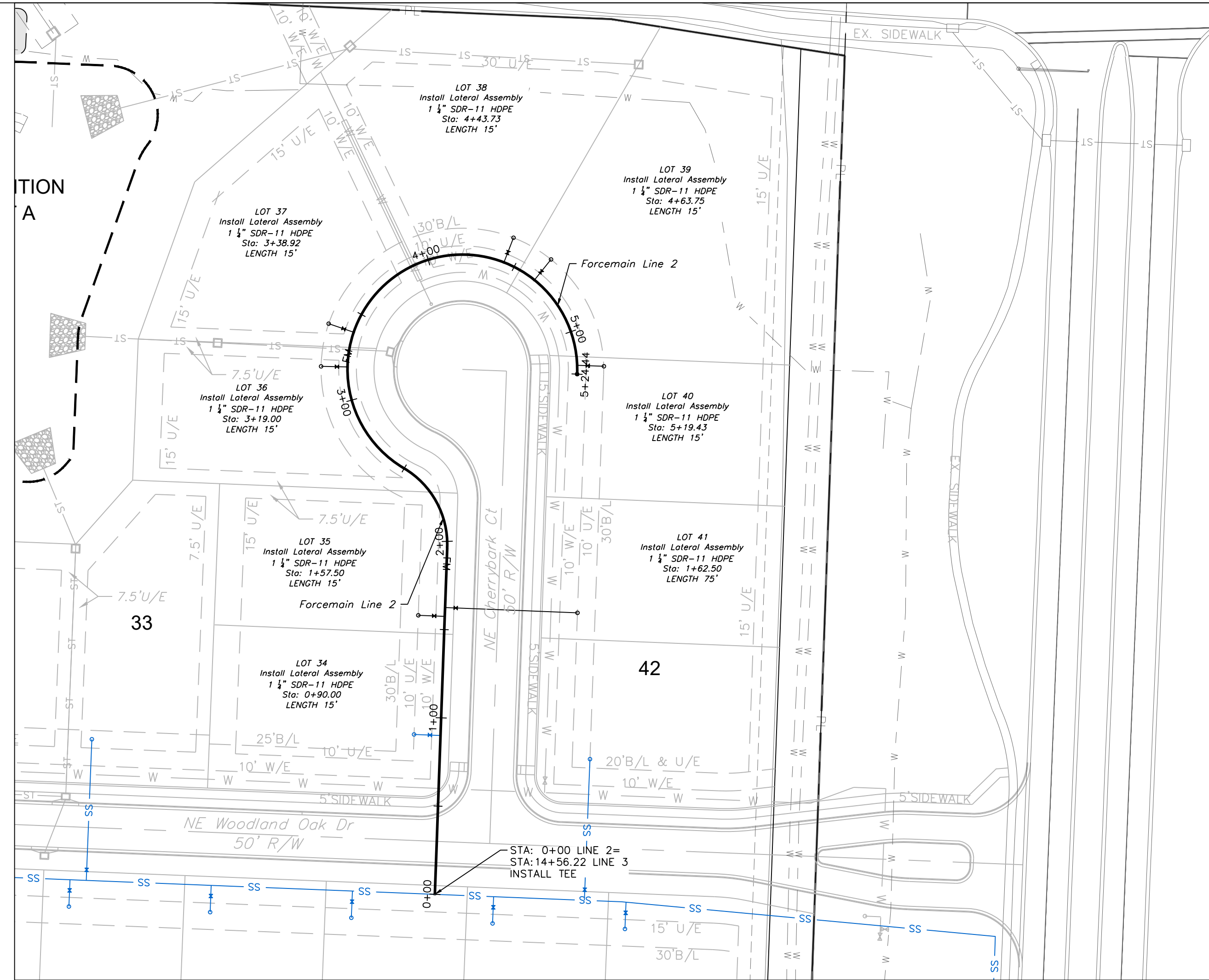
Matthew J. Schlicht  
 MO PE 0000019708  
 KS PE 19071  
 NE PE 25226  
 NE PE E-14335

REVISIONS  
 REV. 5/5/2021  
 REV. 5/26/2021  
 REV. 6/22/2021  
 REV. 6/29/2021



**GENERAL NOTE:**  
 1 - ALL CONSTRUCTION SHALL CONFORM TO THE CITY OF LEE'S SUMMIT DESIGN AND CONSTRUCTION MANUAL AS ADOPTED BY ORDINANCE 5813.  
 2 - TRENCH CHECKS SHALL BE INSTALLED AT ALL SANITARY WYES LOCATION.  
 3 - COMPACTED FILL SHALL BE PLACED TO A MINIMUM 18" ABOVE THE TOP OF THE PIPE PRIOR TO INSTALLATION.

**NOTE:**  
 ALL LOTS WILL BE FORCEMAIN AND REQUIRE GRINDER PUMPS.



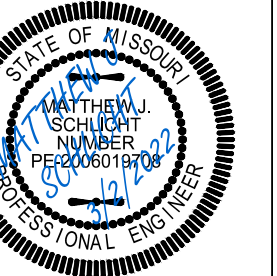
**ENGINEERING SOLUTIONS**  
 ENGINEERING & SURVEYING  
 50 SE 30TH STREET  
 LEE'S SUMMIT, MO 64082  
 P: (816) 623-9888 F: (816) 623-9849

Professional Registration  
 Missouri  
 Engineering 2005002186-D  
 Surveying 2005008319-D  
 Kansas  
 Engineering E-1685  
 Surveying LS-218  
 Oklahoma  
 Engineering 6254  
 Nebraska  
 Engineering CA2821

Part of the Southeast 1/4  
 Section 27, Township 48 North, Range 31 West  
 Lee's Summit, Jackson County, Missouri

Project: WOODLAND OAKS  
 LSHO  
 Issue Date: February 25, 2021

Sanitary Plan and Profile  
 Construction Plans for:  
 WOODLAND OAKS  
 Lots 1 thru 42  
 Lee's Summit, Jackson County, Missouri



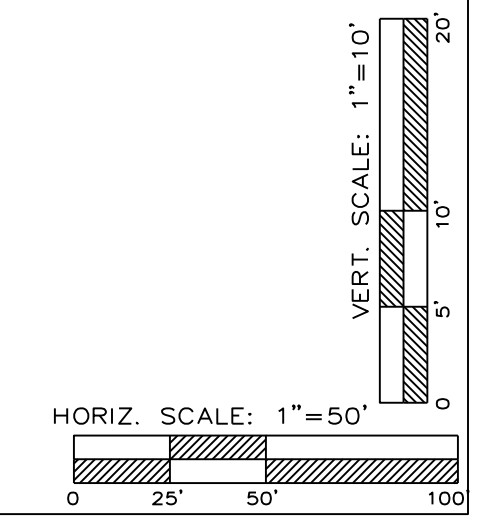
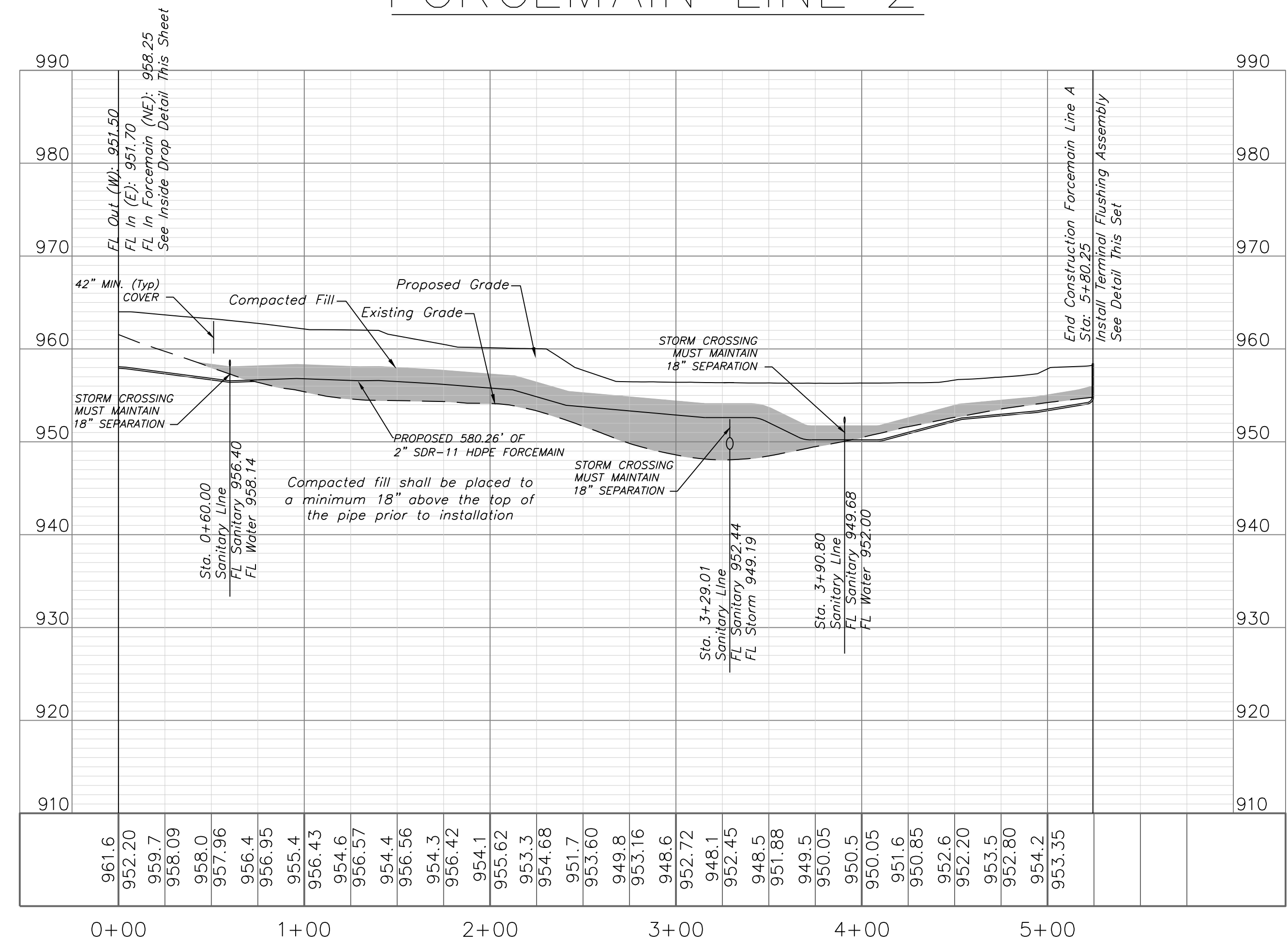
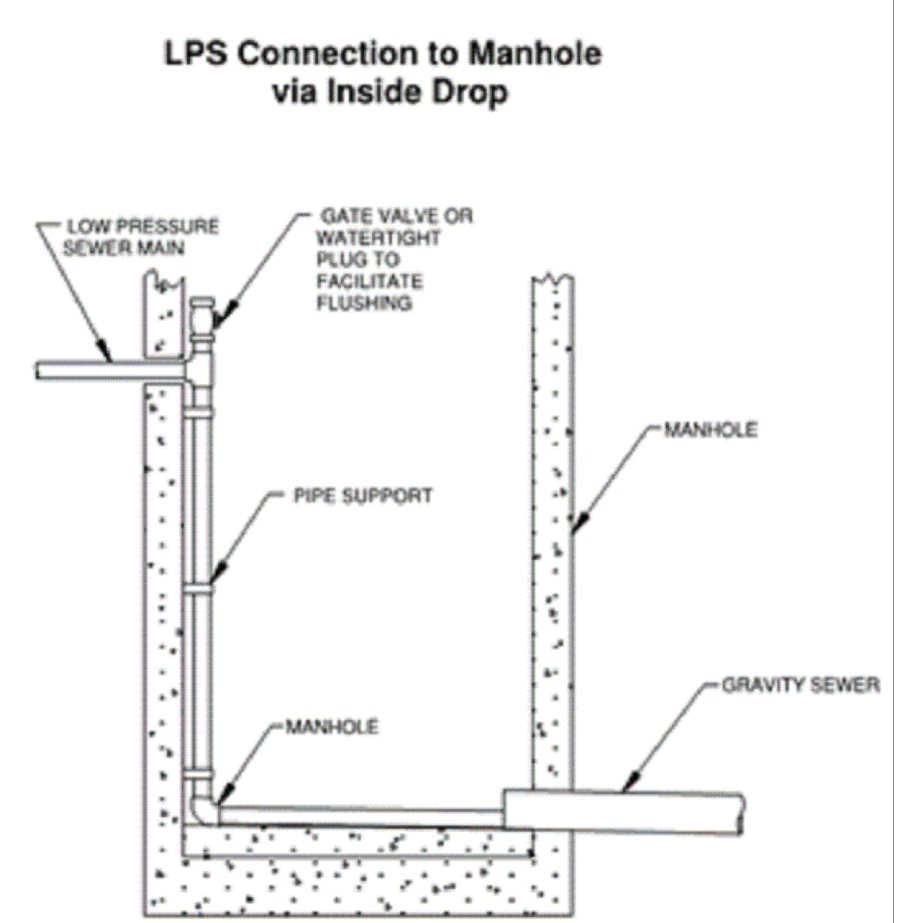
Matthew J. Schlicht  
 MO PE 2006019708  
 KS PE 19071  
 OK PE 25226  
 NE PE E-14335

REVISIONS

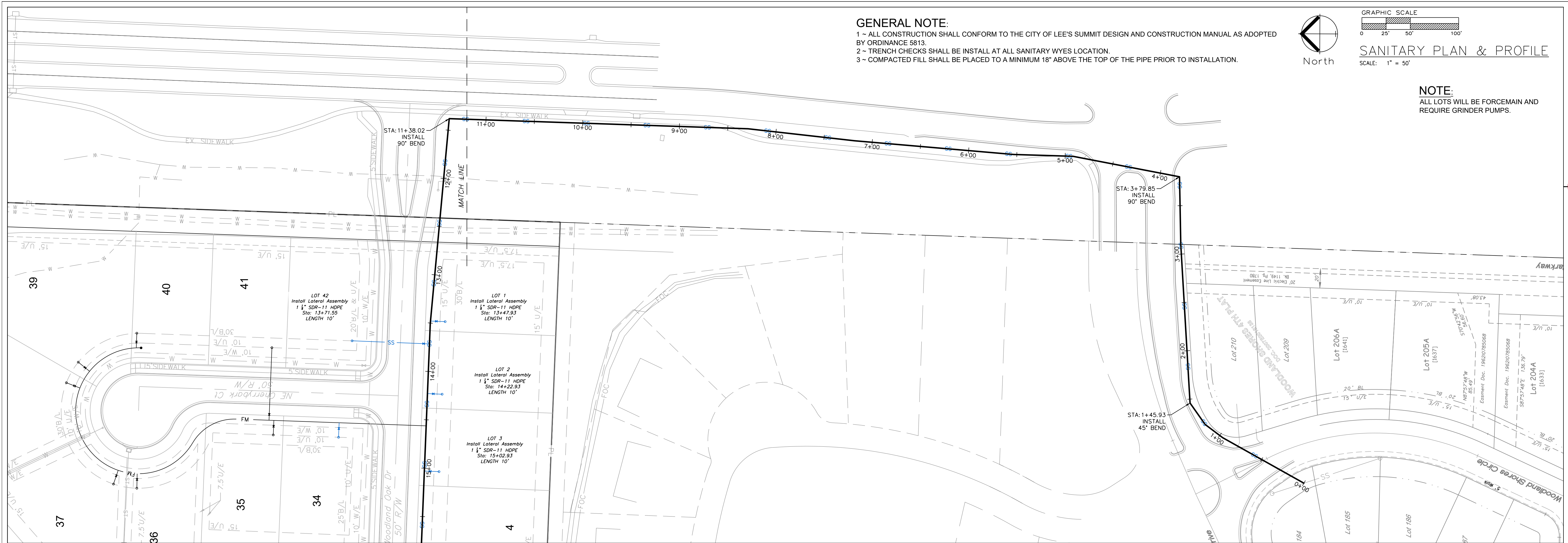
REV. 5/5/2021
REV. 5/26/2021
REV. 6/22/2021
REV. 6/29/2021

C.403

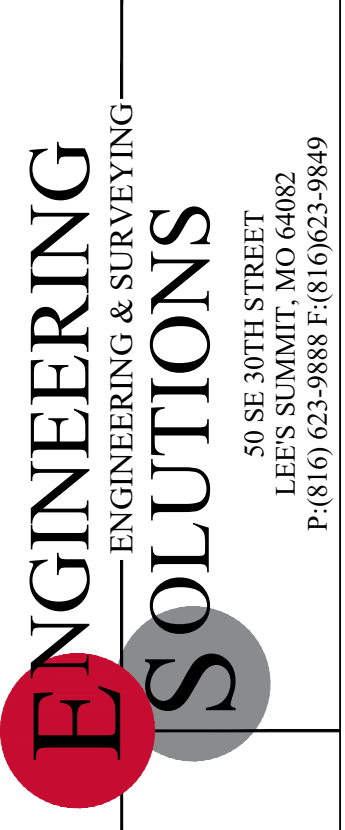
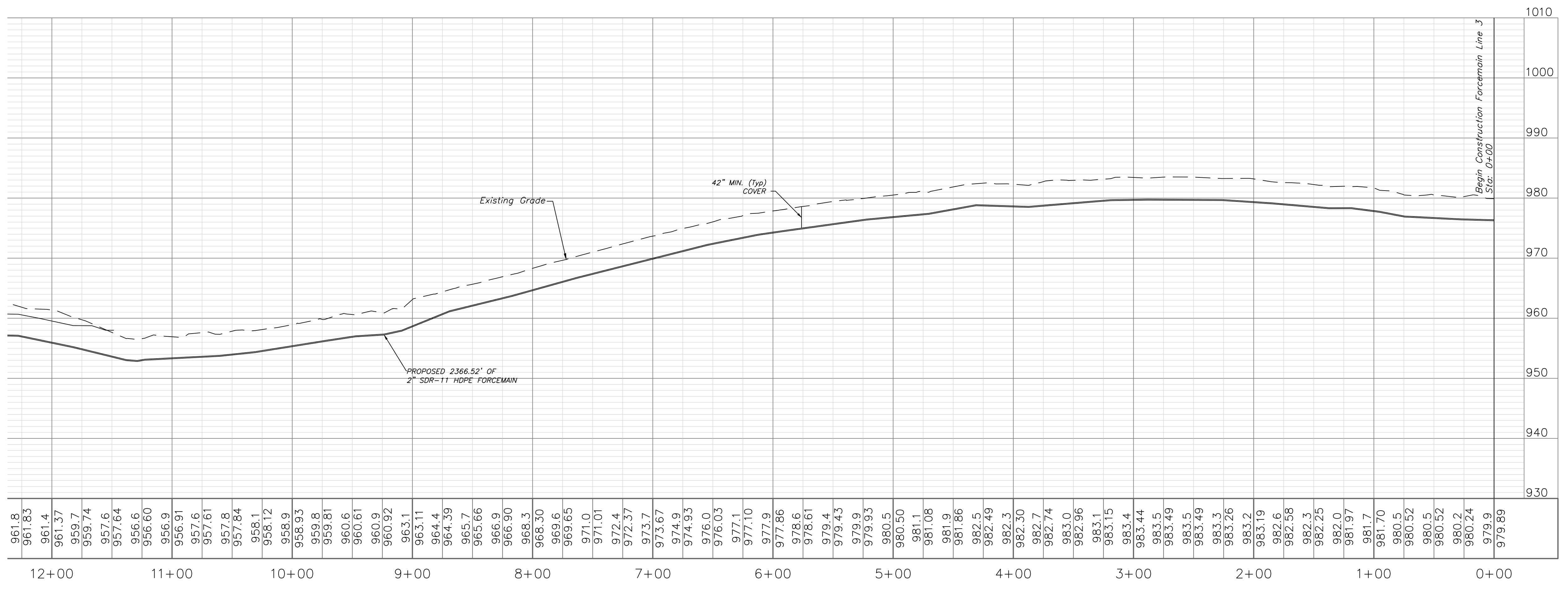
## FORCEMAIN LINE 2







FORCEMAIN LINE 3



Professional Registration  
 Missouri  
 Engineering 2005002186-D  
 Surveying 2005008319-D  
 Kansas  
 Engineering E-1685  
 Surveying LS-218  
 Oklahoma  
 Engineering 6254  
 Nebraska  
 Engineering CA2821

Project: WOODLAND OAKS  
 LSHO  
 Issue Date: February 25, 2021

Sanitary Plan and Profile  
 Construction Plans for:  
 WOODLAND OAKS  
 Lots 1 thru 42  
 Lee's Summit, Jackson County, Missouri

Part of the Southeast 1/4  
 Section 27, Township 48 North, Range 31 West  
 Lee's Summit, Jackson County, Missouri

Project: WOODLAND OAKS  
 LSHO  
 Issue Date: February 25, 2021

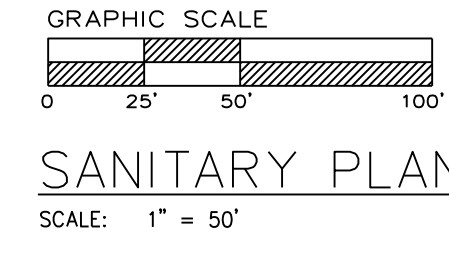
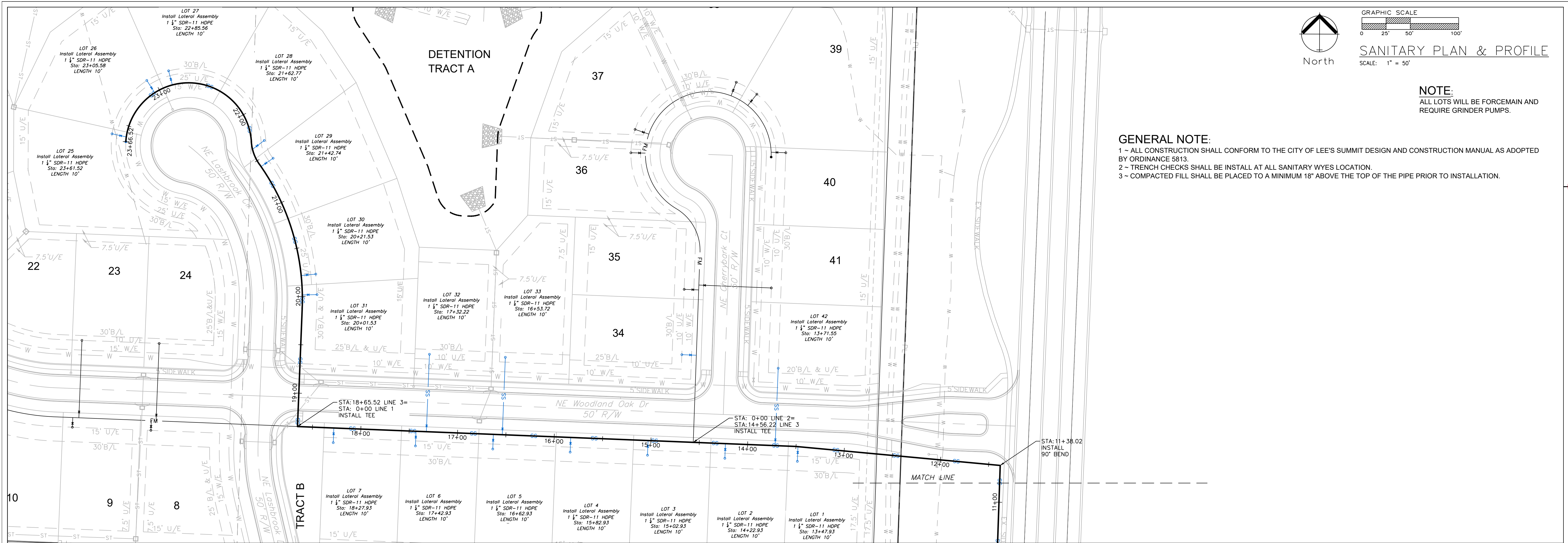


Matthew J. Schlicht  
 MO PE 2006019708  
 KS PE 19071  
 OK PE 25226  
 NE PE E-14335

REVISIONS

REV. 5/5/2021
REV. 5/26/2021
REV. 6/22/2021
REV. 6/29/2021

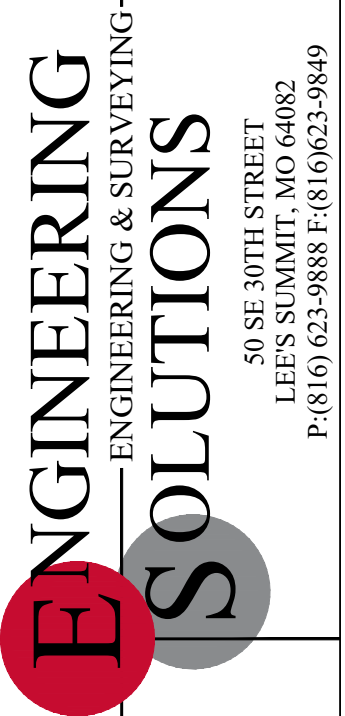
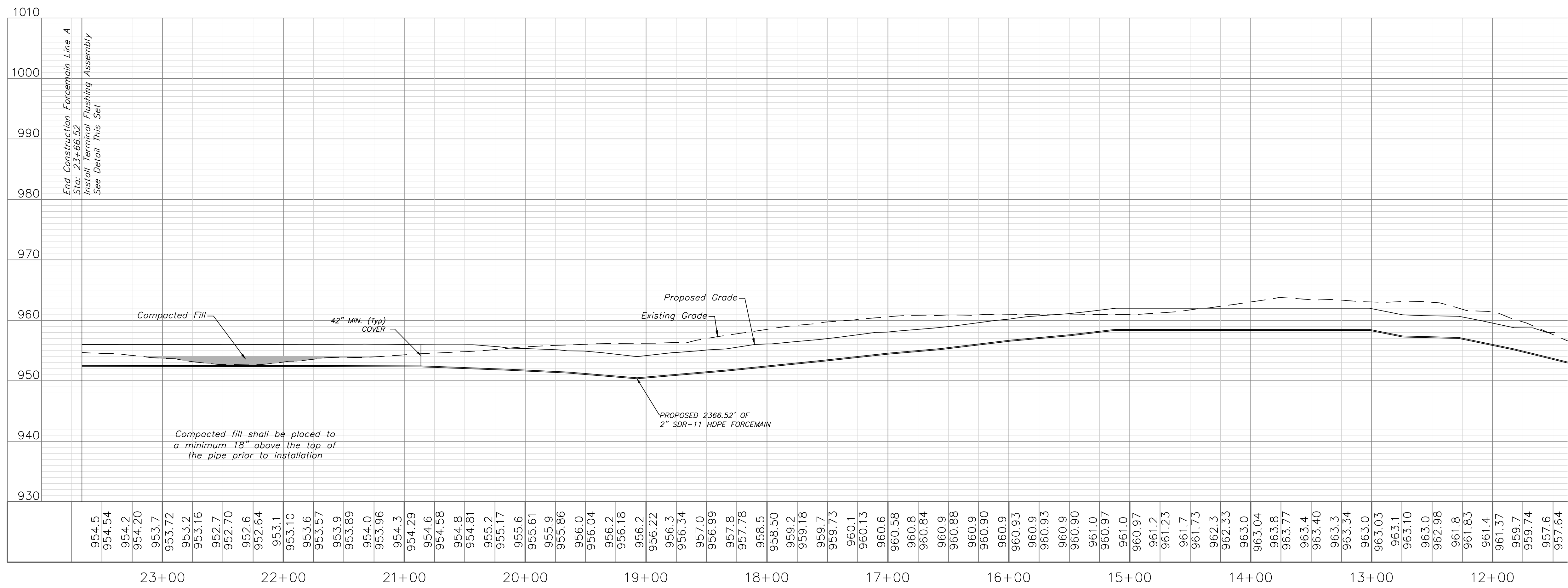




**NOTE:**  
ALL LOTS WILL BE FORCEMAIN AND REQUIRE GRINDER PUMPS.

**GENERAL NOTE:**  
 1 ~ ALL CONSTRUCTION SHALL CONFORM TO THE CITY OF LEE'S SUMMIT DESIGN AND CONSTRUCTION MANUAL AS ADOPTED BY ORDINANCE 5813.  
 2 ~ TRENCH CHECKS SHALL BE INSTALL AT ALL SANITARY WYES LOCATION.  
 3 ~ COMPACTED FILL SHALL BE PLACED TO A MINIMUM 18" ABOVE THE TOP OF THE PIPE PRIOR TO INSTALLATION.

## FORCEMAIN LINE 3



Professional Registration  
 Missouri  
 Engineering 2005002186-D  
 Surveying 2005008319-D  
 Kansas  
 Engineering E-1685  
 Surveying LS-218  
 Oklahoma  
 Engineering 6254  
 Nebraska  
 Engineering CA2821

Project:  
 WOODLAND OAKS  
 LSHO  
 Issue Date:  
 February 25, 2021

Part of the Southeast 4  
 Section 27, Township 48 North, Range 31 West  
 Lee's Summit, Jackson County, Missouri

Sanitary Plan and Profile  
 Construction Plans for:  
 WOODLAND OAKS  
 Lots 1 thru 42  
 Lee's Summit, Jackson County, Missouri

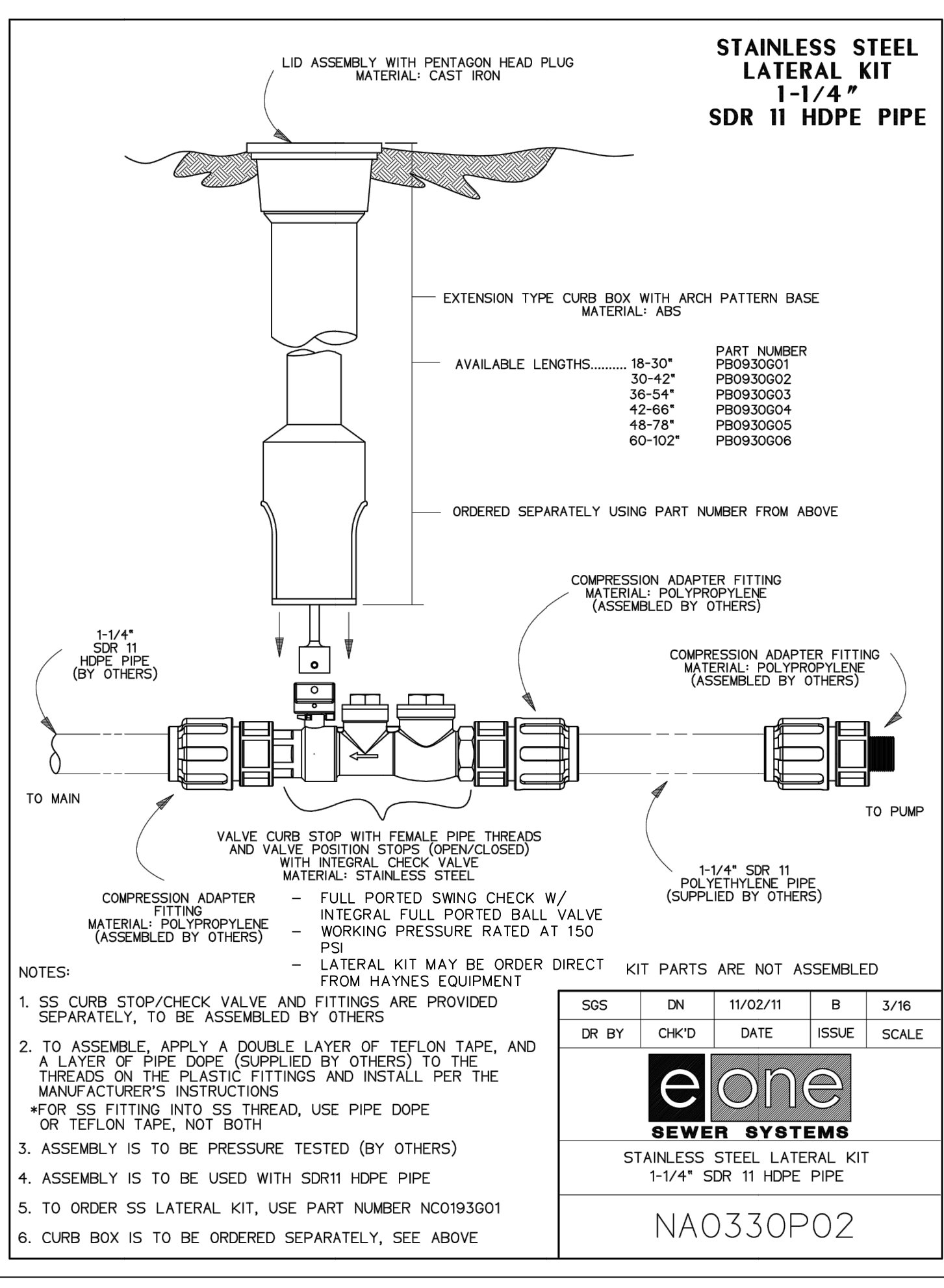
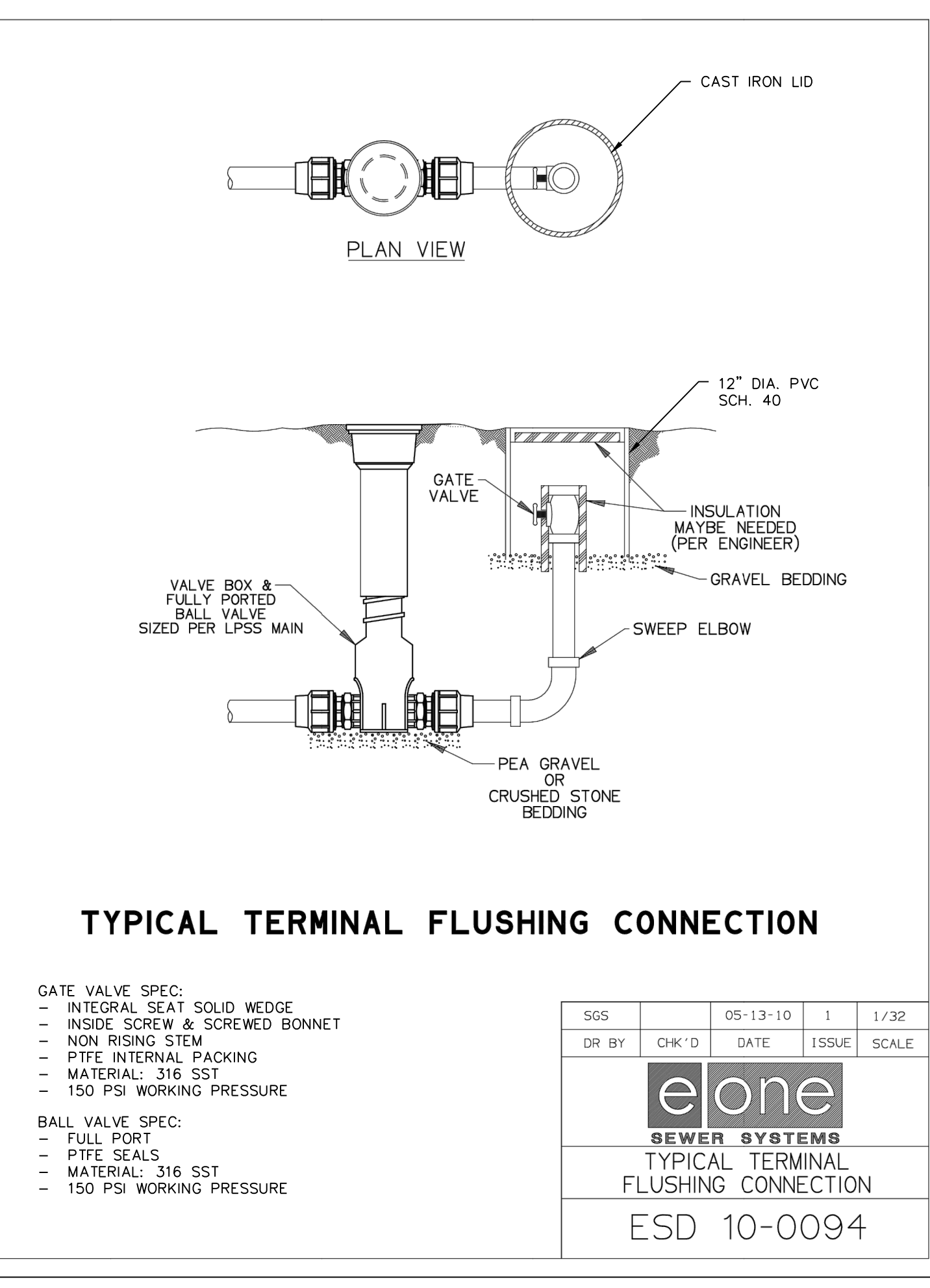
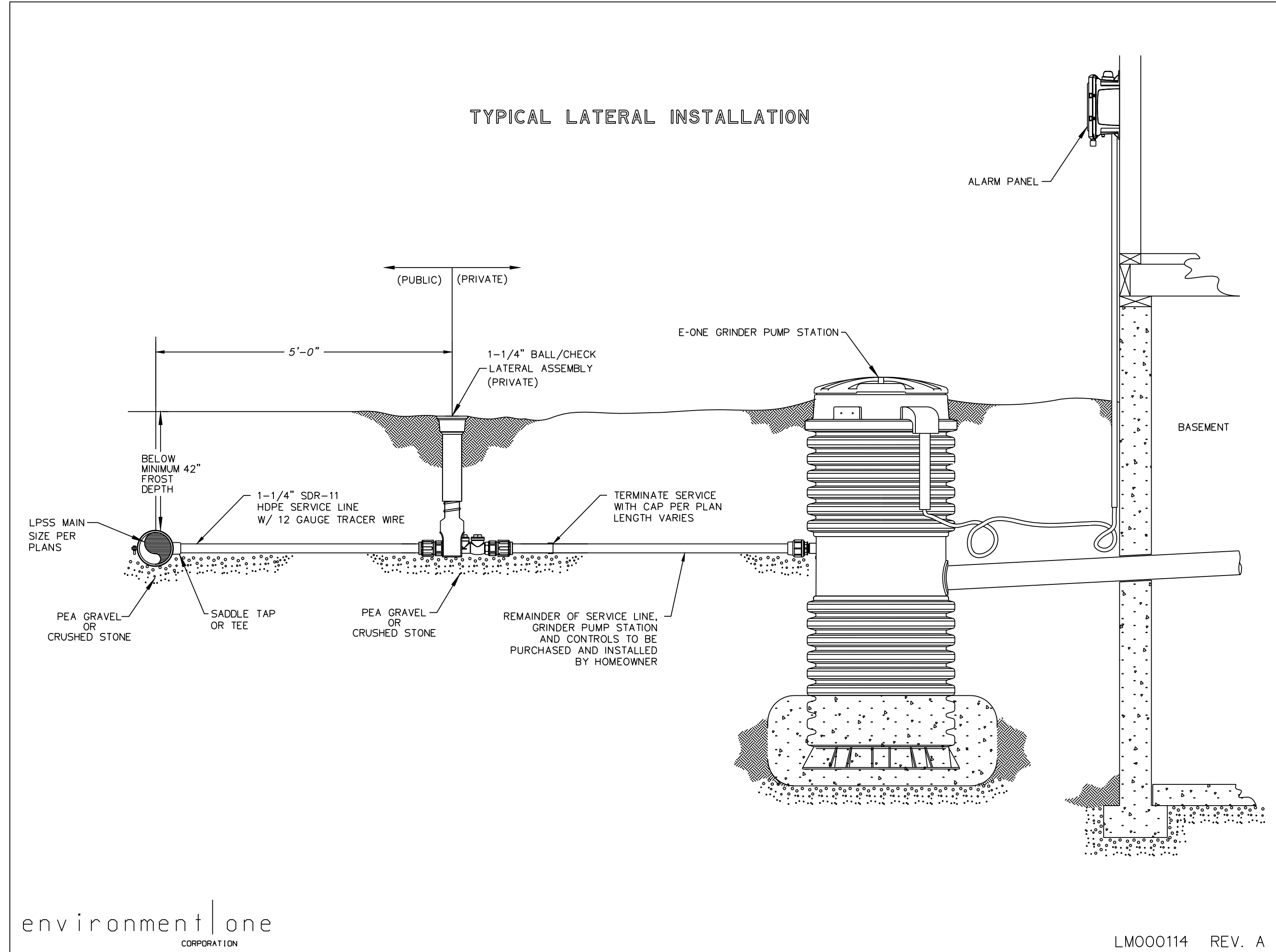


Matthew J. Schlicht  
 MO PE 2006019708  
 KS PE 19071  
 OK PE 25226  
 NE PE E-14335

REVISIONS

REV. 5/5/2021
REV. 5/26/2021
REV. 6/22/2021
REV. 6/28/2021





**GENERAL NOTE:**  
 1 ~ ALL CONSTRUCTION SHALL CONFORM TO THE CITY OF LEE'S SUMMIT DESIGN AND CONSTRUCTION MANUAL AS ADOPTED BY ORDINANCE 5813.  
 2 ~ TRENCH CHECKS SHALL BE INSTALL AT ALL SANITARY WYES LOCATION.