

NOT FOR CONSTRUCTION

K-1 Speed
Entertainment Complex
Lot 4C Strother Crossing
Lots 4A-4C Lee's Summit, MO

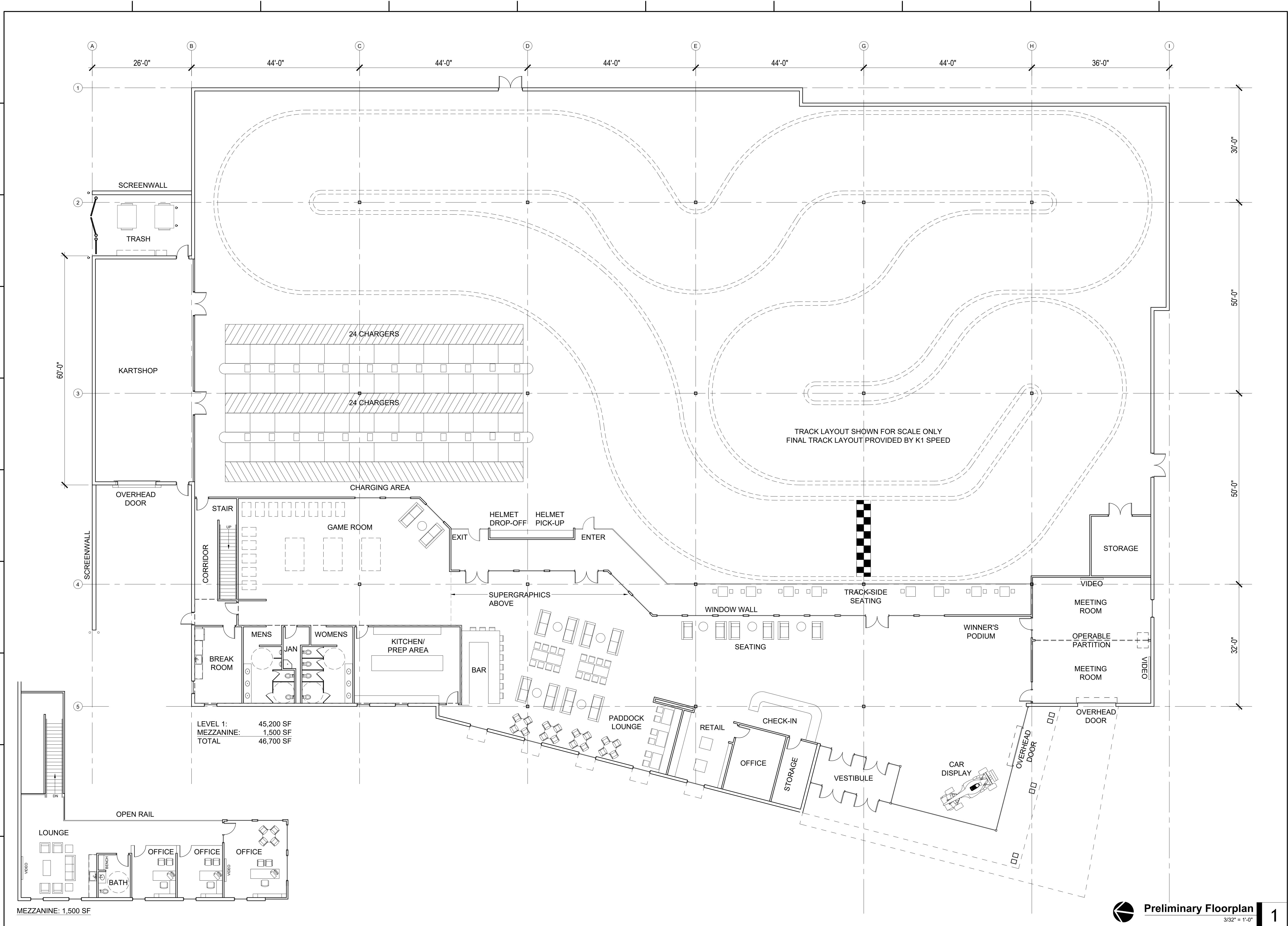
#	Revisions:
01	PDP-CITY COMMENTS 03/15/2022

Project #: 211107

Preliminary
Development Plan
10 February 2022

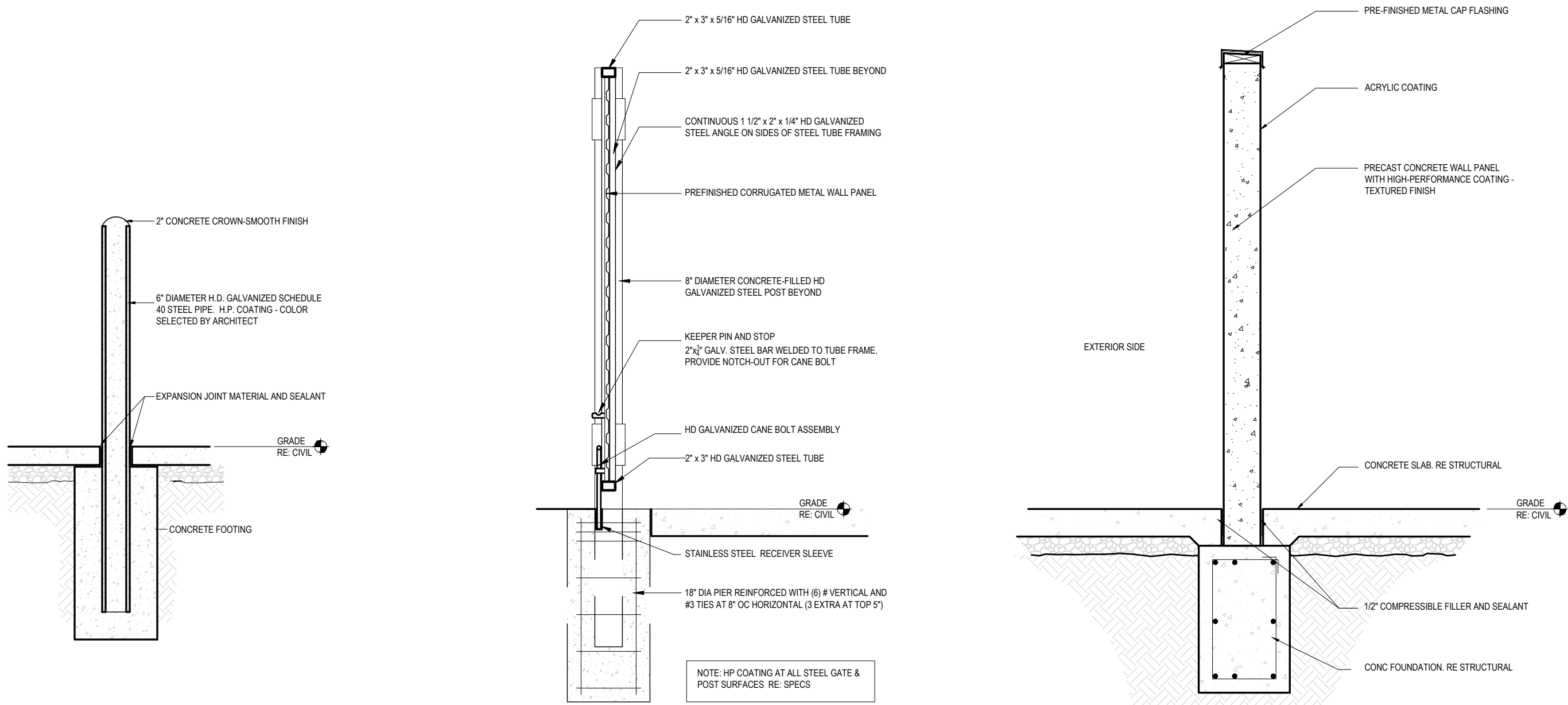
Preliminary
Floorplan

A100



NOT FOR CONSTRUCTION

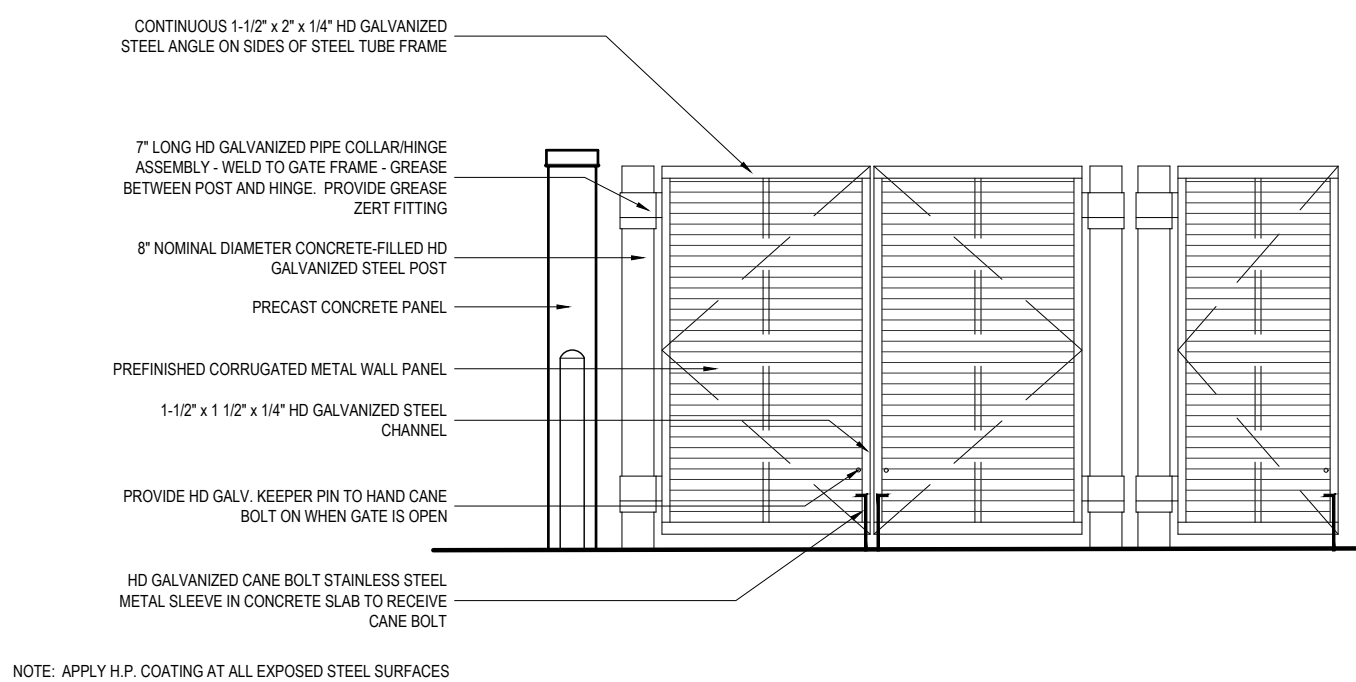
K-1 Speed
Entertainment Complex
Lot 4C Strother Crossing
Lots 4A-4C Lee's Summit, MO



Enlarged Trash Enclosure Details

1/2" = 1'-0"

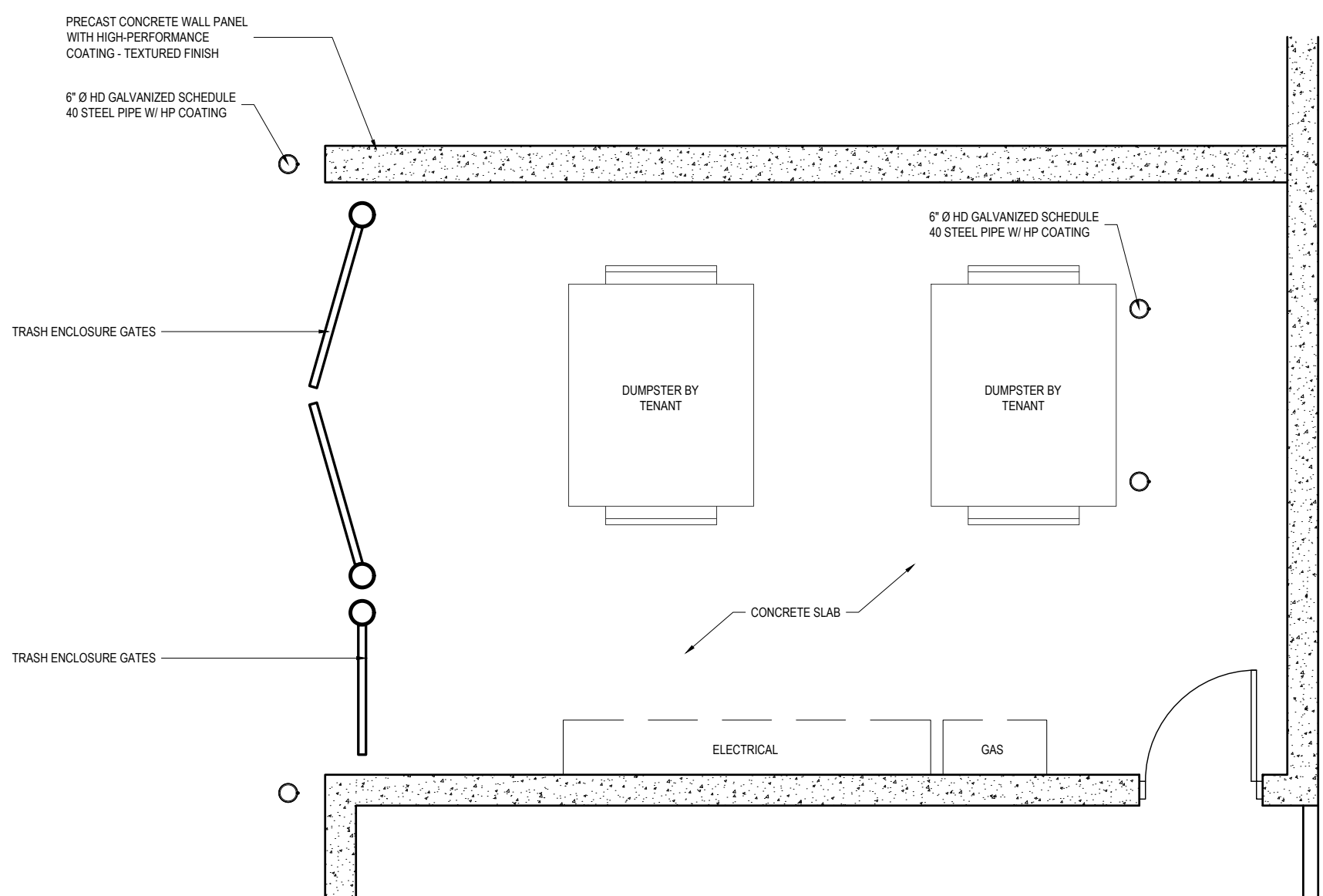
2



Enlarged Trash Enclosure Elevation

1/4" = 1'-0"

3



Enlarged Trash Enclosure Plan

1/4" = 1'-0"

1

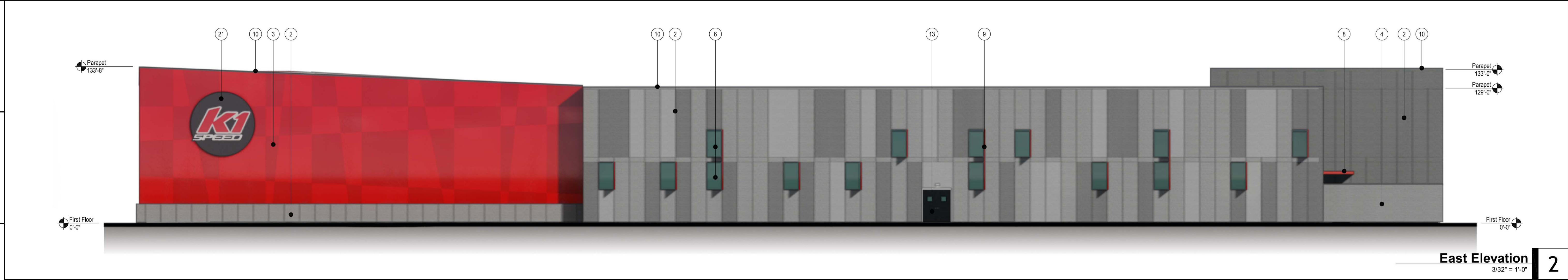
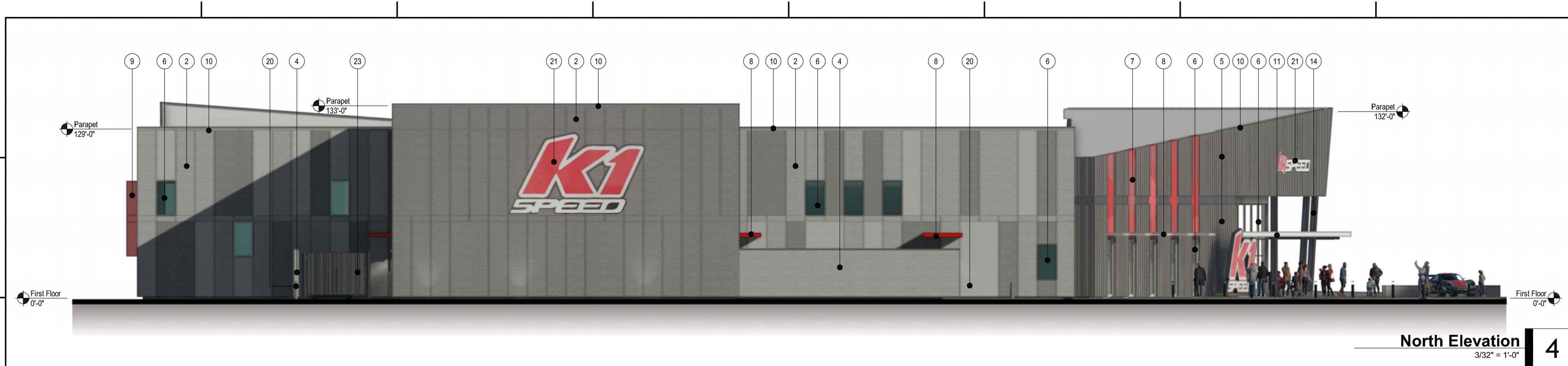
#	Revisions:
01	PDP-CITY COMMENTS 03/15/2022

Project #: 211107

Preliminary
Development Plan
10 February 2022

Trash Enclosure
Details

A101



MATERIALS LEGEND

- 1 ALUMINUM COMPOSITE METAL WALL PANEL
- 2 PRE-CAST CONCRETE WALL PANEL WITH HIGH PERFORMANCE COATING - TEXTURED FINISH
- 3 PRE-CAST CONCRETE WALL PANEL WITH HIGH PERFORMANCE COATING - SMOOTH FINISH
- 4 PRE-CAST CONCRETE SCREEN WALL WITH HIGH PERFORMANCE COATING - TEXTURED FINISH
- 5 PRE-FINISHED METAL WALL PANEL SYSTEM
- 6 ALUMINUM STOREFRONT SYSTEM WITH LOW-E GLAZING
- 7 ALUMINUM STOREFRONT SYSTEM WITH COLORED INTERLAYER LOW-E GLAZING - INTERNALLY LIT
- 8 PRE-FINISHED METAL CANOPY SYSTEM
- 9 PRE-FINISHED METAL VERTICAL SUNSHADE SYSTEM
- 10 PRE-FINISHED METAL COPING
- 11 CANOPY SHADE STRUCTURE SYSTEM
- 12 ALUMINUM/GLASS STOREFRONT DOOR(S)
- 13 FLUSH HOLLOW CORE STEEL DOOR
- 14 HD GALVANIZED STRUCTURAL STEEL FRAMING WITH HP COATING
- 15 EXPOSED CONCRETE CURB WITH RUBBED FINISH
- 16 INSULATED COILING STEEL OVERHEAD DOOR
- 17 ALUMINUM FRAME GLASS OVERHEAD DOOR
- 18 FLUSH HOLLOW CORE STEEL DOOR WITH VIEW LITES
- 19 WALL MOUNTED EXTERIOR LIGHTING
- 20 6" HD GALVANIZED CONCRETE FILLED STEEL PIPE BOLLARD WITH HP COATING
- 21 INTERNALLY ILLUMINATED BUILDING MOUNTED SIGNAGE - ALL SIGNAGE TO CONFORM TO CITY SIGNAGE REQUIREMENTS AND SUBMITTED FOR REVIEW UNDER A SEPARATE APPLICATION
- 22 FREESTANDING PHOTO OPPORTUNITY LOCATION
- 23 TRASH ENCLOSURE GATE - PRE-FINISHED METAL PANEL IN HD GALVANIZED STEEL FRAME

NOTE:
1. ALL ROOF-MOUNTED EQUIPMENT SHALL BE SCREENED ENTIRELY FROM VIEW USING PARAPET WALLS.
2. DEVELOPER TO STUDY THE FEASIBILITY OF USING ROOF PANEL SOLAR ENERGY. SIZE AND FINAL LOCATION OF ROOF PANELS TO BE DETERMINED.

NOT FOR CONSTRUCTION

K-1 Speed
Entertainment Complex
Lot 4C Strother Crossing
Lots 4A-4C Lee's Summit, MO

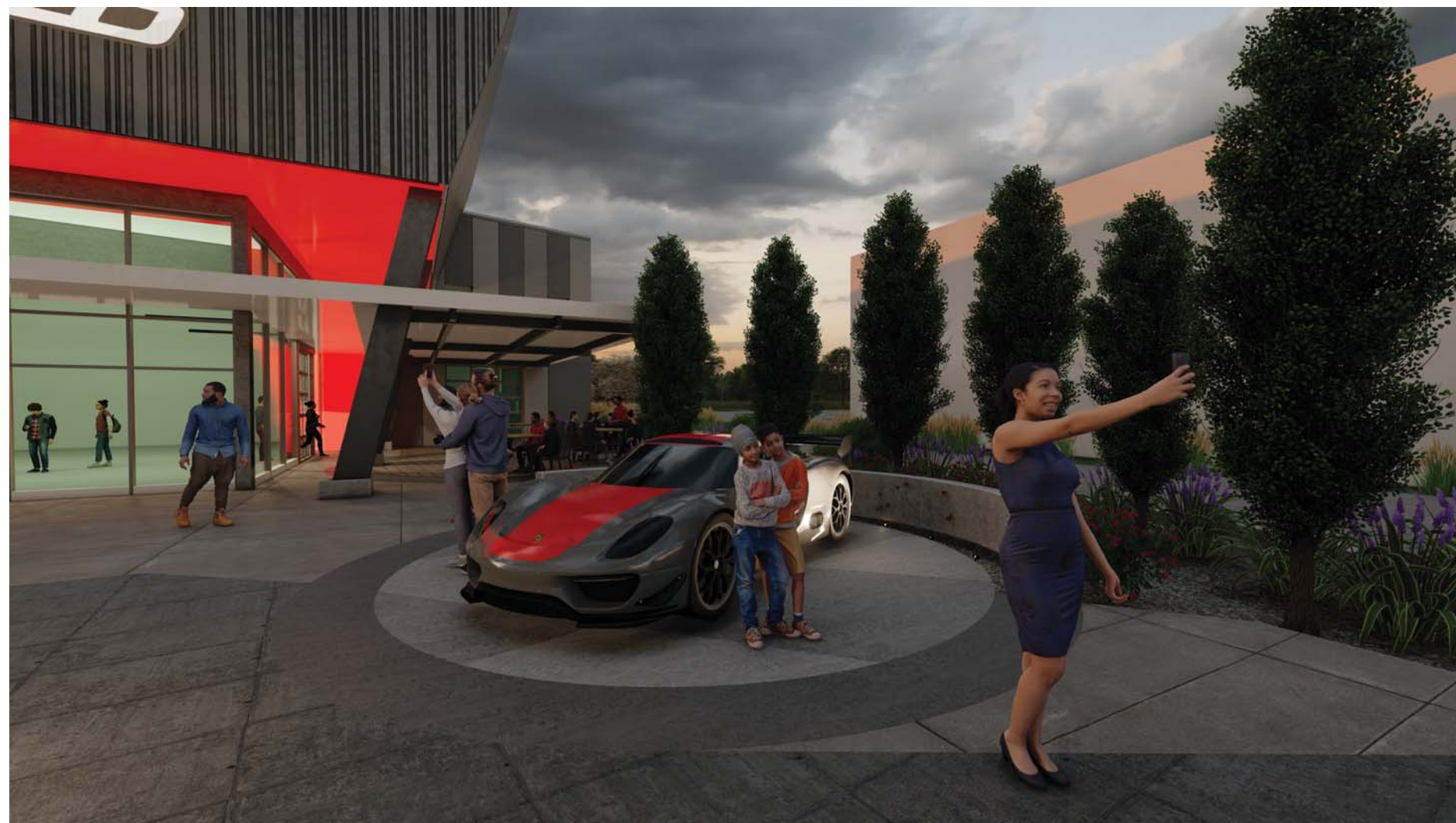
Revisions:
01 PDP-CITY COMMENTS 03/15/2022

Project #: 211107

Preliminary
Development Plan
10 February 2022

Preliminary
Exterior Elevations

A200



K1 Speed - Exterior 3D Renderings

Lee's Summit, MO

SAI# 211107 03.15.2022



K1 Speed - Exterior 3D Renderings

Lee's Summit, MO

SAI# 211107 03.15.2022

PRELIMINARY EXTERIOR MATERIALS PALETTE:

- A.

Aluminum Composite Metal Wall Panel
Manufacturer: Alpolic
Color/Finish: Red to Match K1 Speed Standards
- B.

Precast Concrete Wall Panel (Textured):
Manufacturer: Enterprise Precast or Equal
Color/Finish: High Performance Coating in 3 Shades of Gray
- C.

Precast Concrete Wall Panel (Smooth)
Manufacturer: Enterprise Precast or Equal
Color/Finish: Smooth Coating to Match K1 Speed Standards
- D.

Pre-Finished Metal Wall Panel System
Manufacturer: Centria Concept Series
Vertical Installation of Panel Types CS210, CS220 and CS260.
Color/Finish: 9960 XL Medium Gray
- E.

Aluminum Storefront System:
Manufacturer: Kawneer Versaglaze 451-T
Color/Finish: Clear Anodized / Red
- F.

Clear Insulated Low E Glazing
Manufacturer: AGC Energy Select
- G.

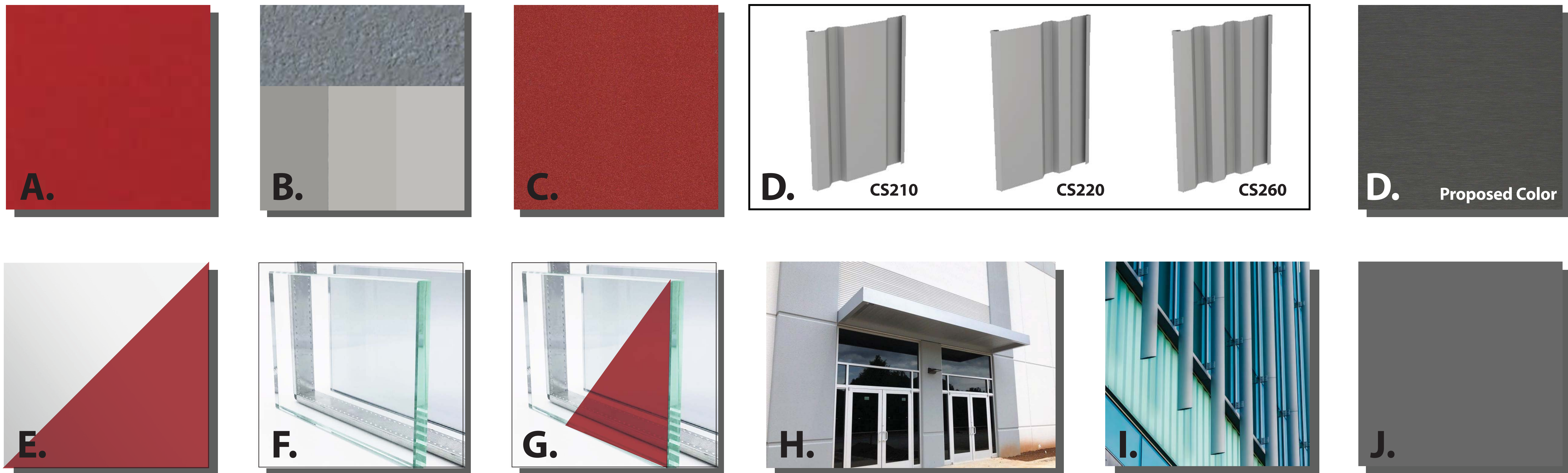
Translucent Insulated Low E Glazing with Laminated Translucent Interior Light
Manufacturer: AGC Eergy Select 40 with Butacite Interlayer Shades of Red
- H.

Pre-Finished Metal Canopy System
Manufacturer: Custom - TBD.
Color/Finish: White/Red to Match K1 Speed Standards
- I.

Pre-Finished Metal Vertical Sunshade System
Manufacturer: Custom - TBD.
Color/Finish: Red to Match K1 Speed Standards
- J.

Pre-Finished Metal Coping
Manufacturer: Berridge Manufacturing
Color/Finish: Lead Cote
- NOTE:

All Materials Subject to Approved Equal or Substitutions as Development Progresses.





Note:
The new Colbern Road Library Center
Mid-Continent Public Library
1000 NE Colbern Road, Lee's Summit , MO
Uses the same (or almost the same) metal panel
that that is being proposed for K1 Speed.

**EXTERIOR MATERIAL FOR
CITY REVIEW/APPROVAL:**

- D. Pre-Finished Metal Wall Panel System
Manufacturer: Centria Concept Series
Vertical Installation of Panel Types CS210,
CS220 and CS260.
Color/Finish: 9960 XL Medium Gray

D.

CS210



CS220



CS260

D.

Proposed Color



K1 Speed - Pre-Finished Metal Wall Panel System

Lee's Summit, MO

SAI# 211107 03.15.2022