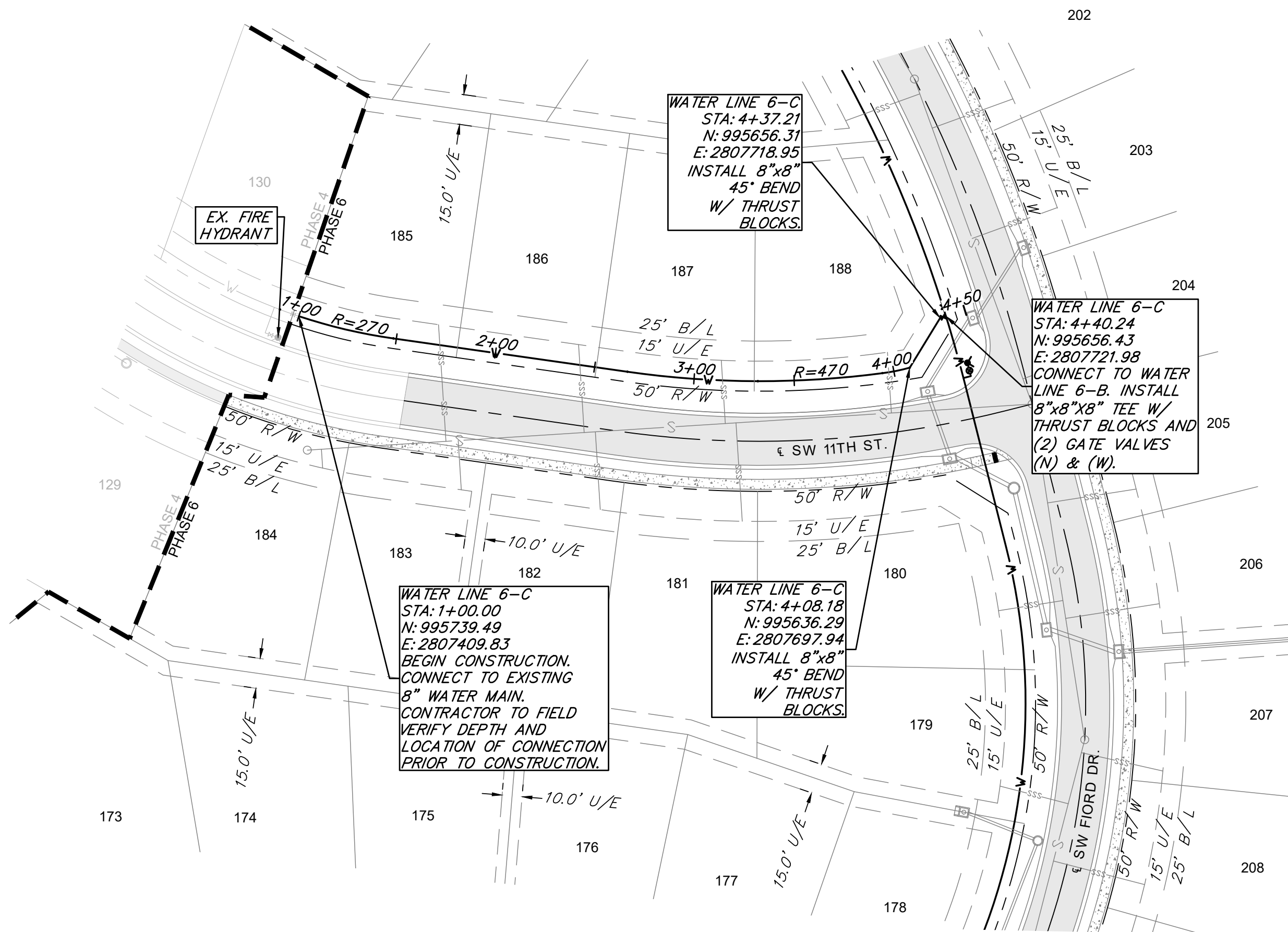
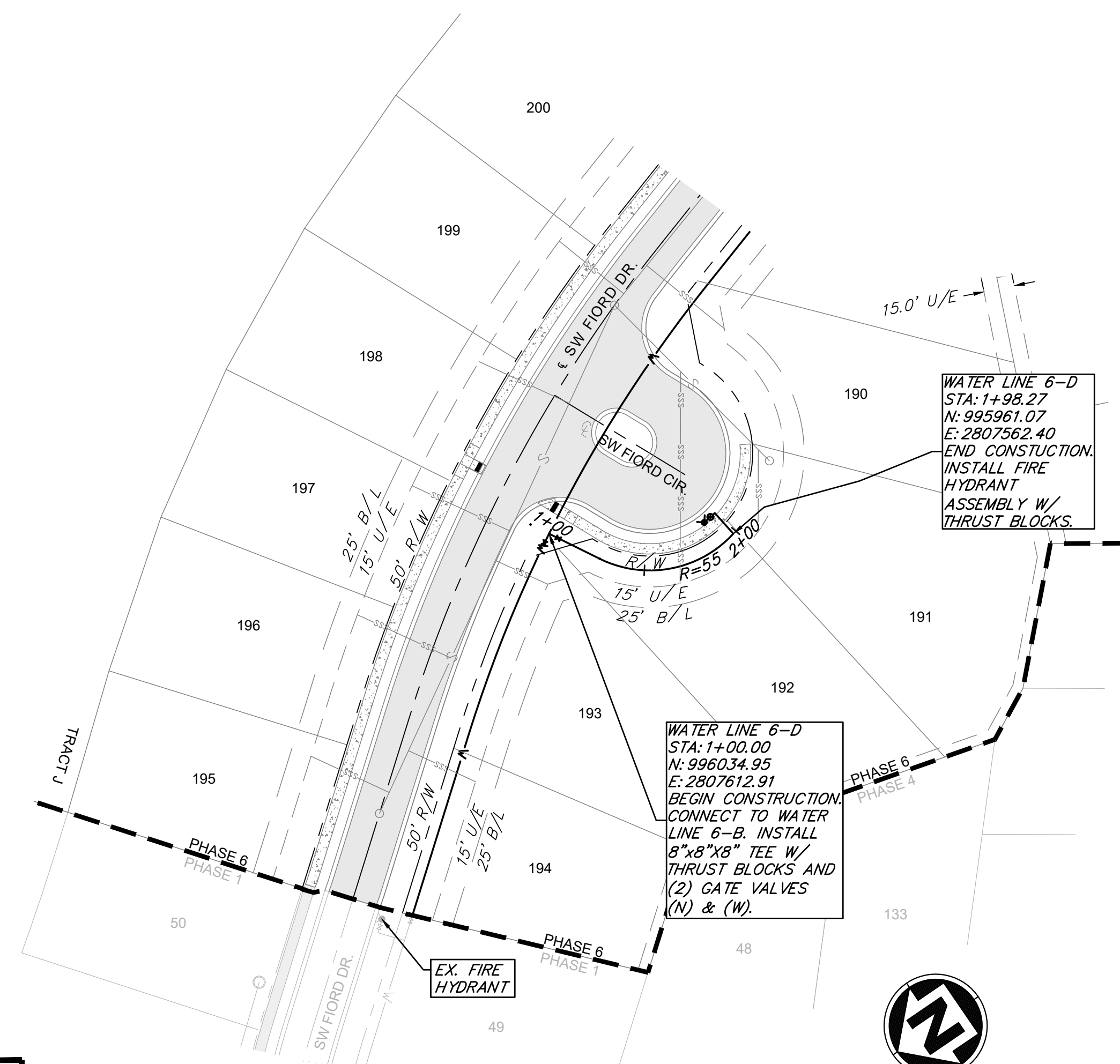
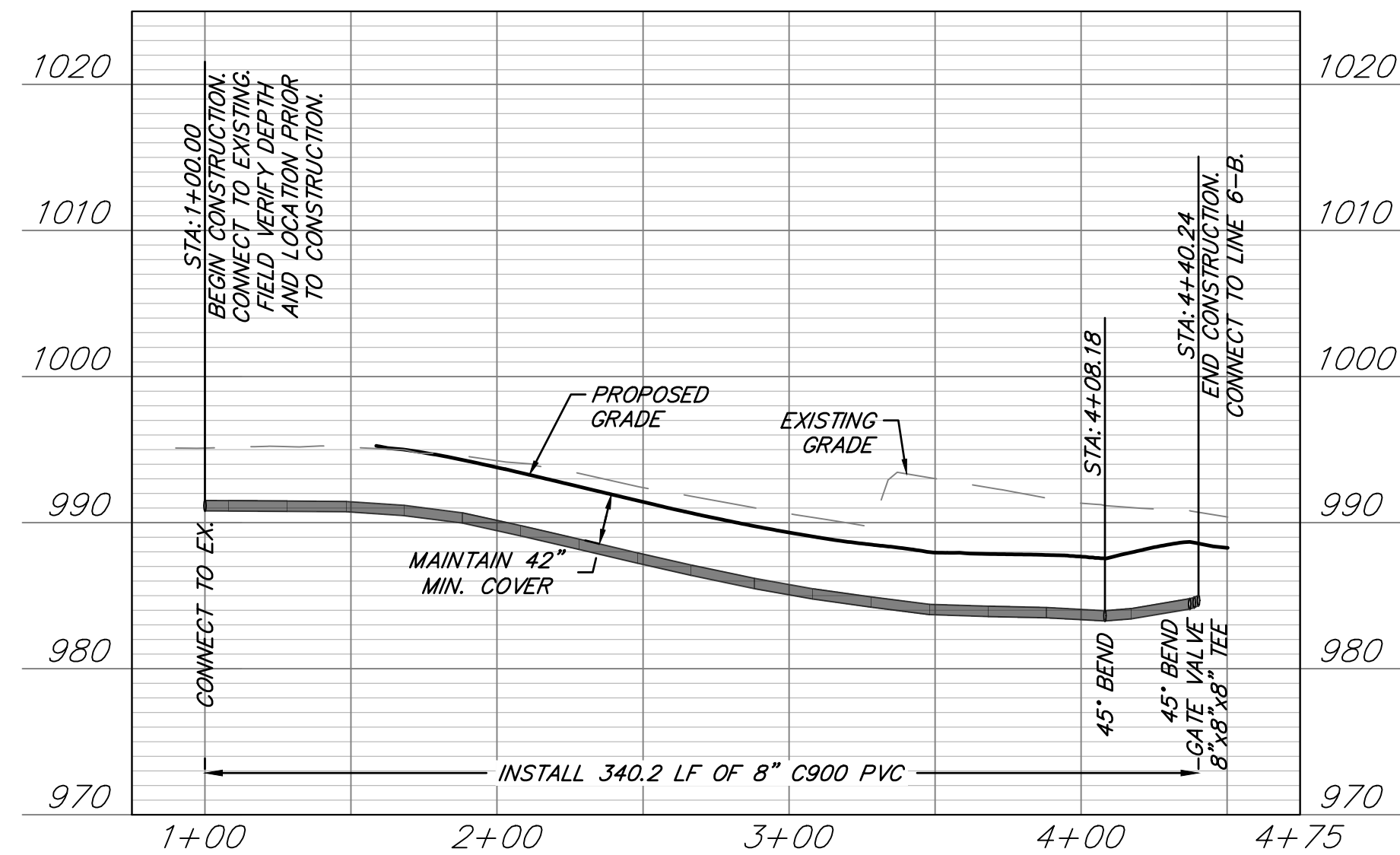


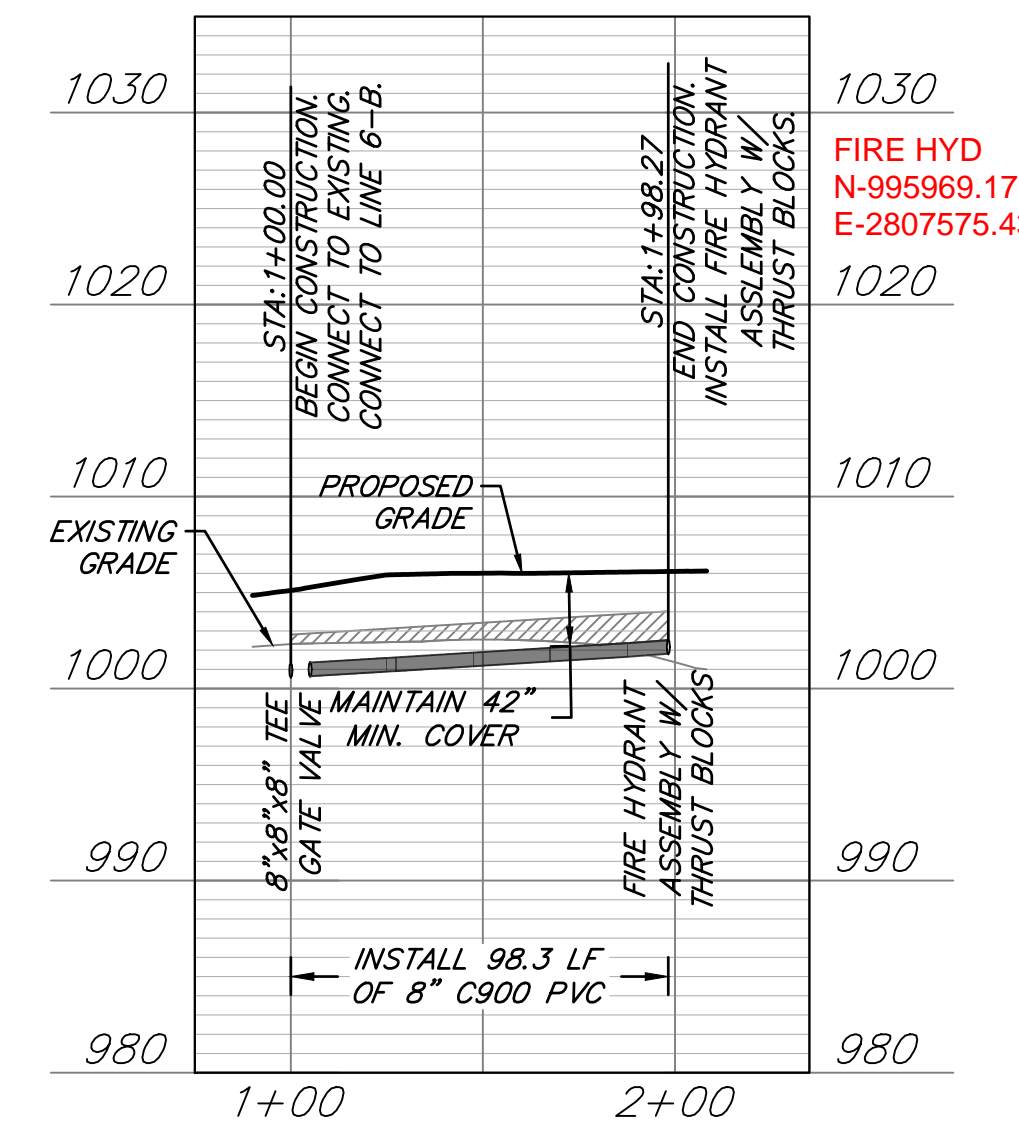
Mar 16, 2021 - 3:09pm Plotted By: gscote G:\Shared drives\VC10 - Land Development\Projects\2020\20K10059 Highland Meadows - 6th Plan\01 CIVL\03-DWG\Sheet\WATER MAIN\20K10059 - SH1 - WATER MAIN\20K10059 - 6th Plan\01 CIVL\03-DWG\Sheet\WATER MAIN\20K10059 Highland Meadows - 6th Plan\01 CIVL\03-DWG\Sheet\WATER MAIN\20K10059 - SH1 - WATER MAIN.dwg Layout: WATER LINE 6-C AND 6-D PLAN & PROFILE



WATER LINE 6-C



WATER LINE 6-D



WATER MAIN NOTES:

1. WATER MAINS AND SANITARY SEWERS SHALL HAVE AT LEAST 10' OF HORIZONTAL SEPARATION.
2. PROVIDE A MINIMUM OF 42" (3.5') OF COVER AND A MAXIMUM OF 84" (7') OF COVER OVER WATER MAIN.
3. CONTROLLED FILL: PRIOR TO INSTALLATION OF WATER PIPING IN FILL AREAS, FILL SHALL BE PLACED AND COMPACTED TO A MINIMUM 95% OF STANDARD PROCTOR DENSITY PER ASTM D 698 TO A MINIMUM DEPTH OF 18" ABOVE THE TOP OF PIPE.
4. CONCRETE THRUST BLOCKS SHALL BE INSTALLED AT ALL HORIZONTAL AND VERTICAL FITTING LOCATIONS IN ACCORDANCE WITH CITY OF LEE'S SUMMIT STANDARD DETAIL WAT-1 AND/OR WAT-2.
5. PROVIDE FITTINGS AND VALVES AS NECESSARY TO REMOVE AND RELOCATE FIRE HYDRANTS IF HYDRANTS ARE REUSED ON PROJECT.

LEGEND

- PROP. STREET &
- - - PROP. RIGHT-OF-WAY
- - - PROP. UTILITY EASEMENT
- - - PROP. BUILDING SETBACK
- - - PROP. LOT LINE
- PROP. WATER LINE
- - - PROP. SSWR
- - - PROP. SSWR SERVICE
- ▒ PROP. STREET PAVEMENT
- ▒ PROP. LONGVIEW BLVD.
- ▒ PROP. SIDEWALK
- ▒ EXISTING SIDEWALK
- ▒ FILL PRIOR TO INSTALL

ANDERSON ENGINEERING
 EMPLOYEE OWNED

ENGINEERS • SURVEYORS • LABORATORIES • DRILLING
 941 W. 141ST TER • KANSAS CITY, MISSOURI 64145 • PHONE (816) 777-9400
 A LICENSED MISSOURI ENGINEERING & SURVEYING CORPORATION - LC 02

DRAWING INFO.	
DRAWN BY:	GC
CHECK BY:	ZM
LICENSE NO.:	PE-2012008323
DATE:	1/7/2021
ISSUED FOR:	FOR REVIEW
JOB NUMBER:	20K10059
MO COA NO.:	000062

REVISIONS	
NO.	DESCRIPTION
1	REVISED PER CITY COMMENT

SUMMIT HOMES KC
 HIGHLAND MEADOWS - 6TH PLAT

WATER LINE 6-C AND 6-D PLAN & PROFILE

S10, T47N, R22W
 LEE'S SUMMIT, JACKSON COUNTY, MISSOURI

STATE OF MISSOURI
 ZACH A. MYERS
 PROFESSIONAL ENGINEER
 NUMBER: PE-2012009232
 EXPIRES: 8/2/25

SHEET NUMBER
C104
 5 OF 6

AS-BUILT
 DATE 01/28/2022

RELEASE FOR
 CONSTRUCTION
 AS NOTED ON PLANS REVIEW
 DEVELOPMENT SERVICES
 LEE'S SUMMIT, MISSOURI
 04/16/2021