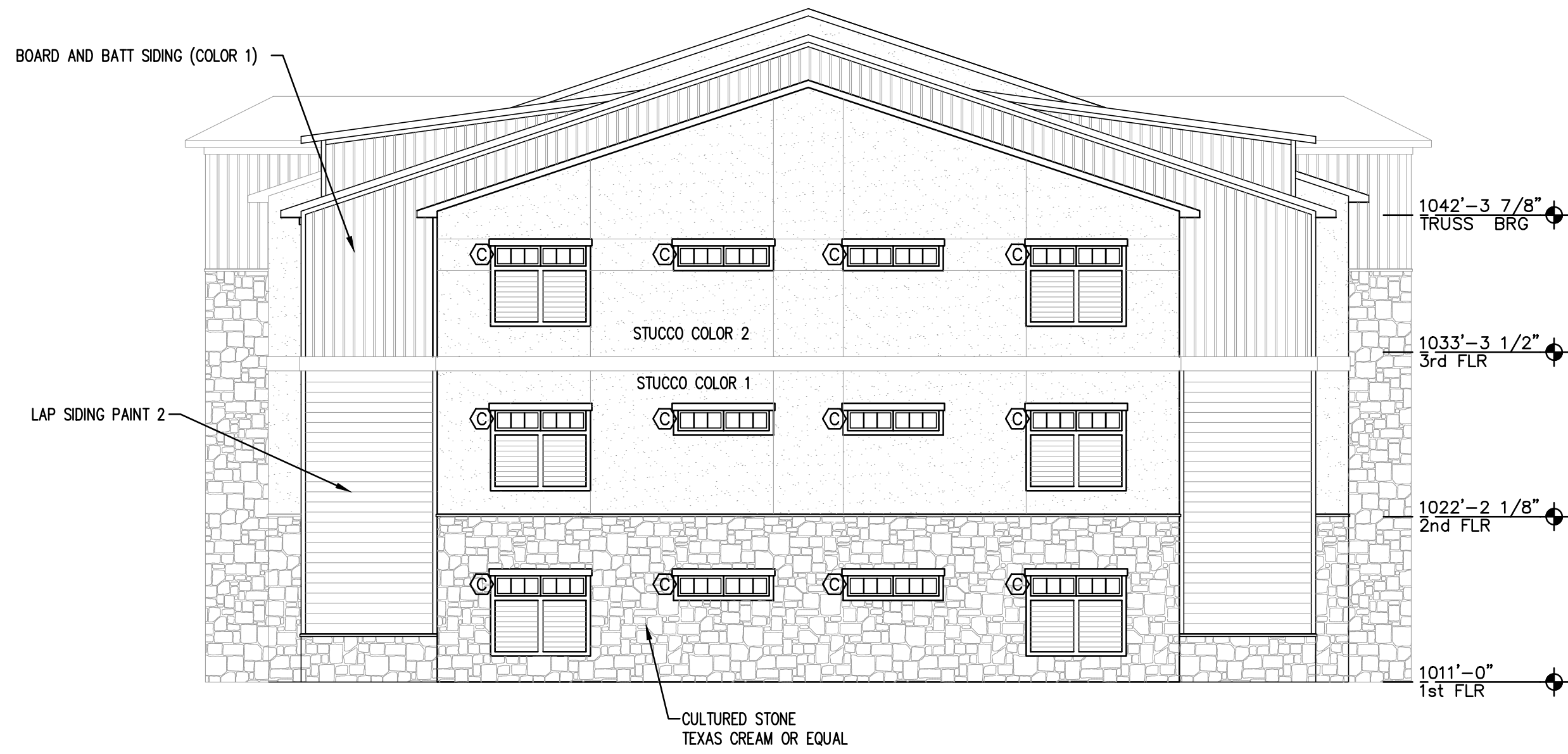
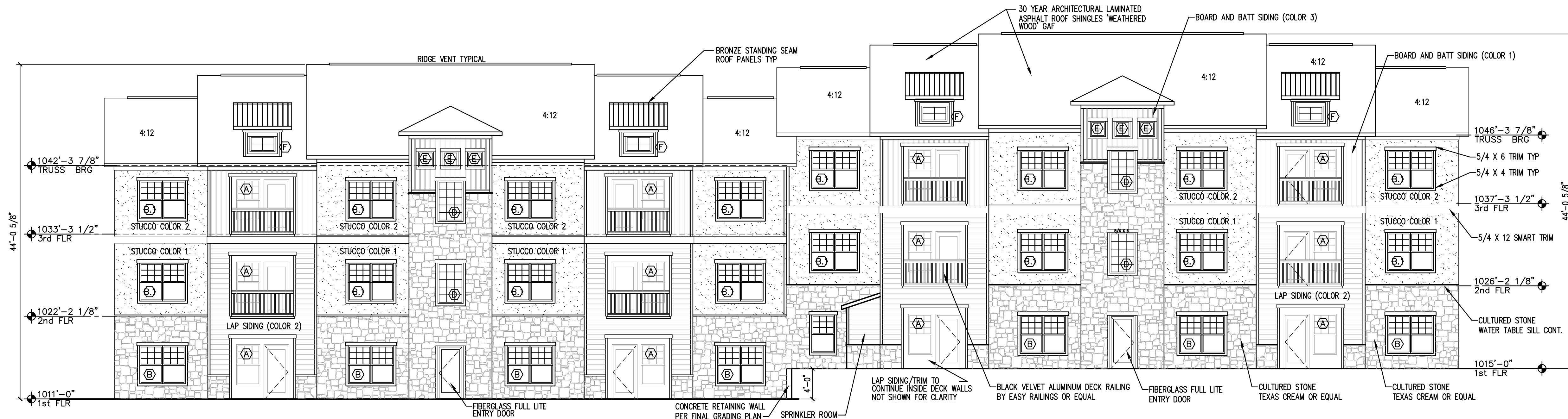




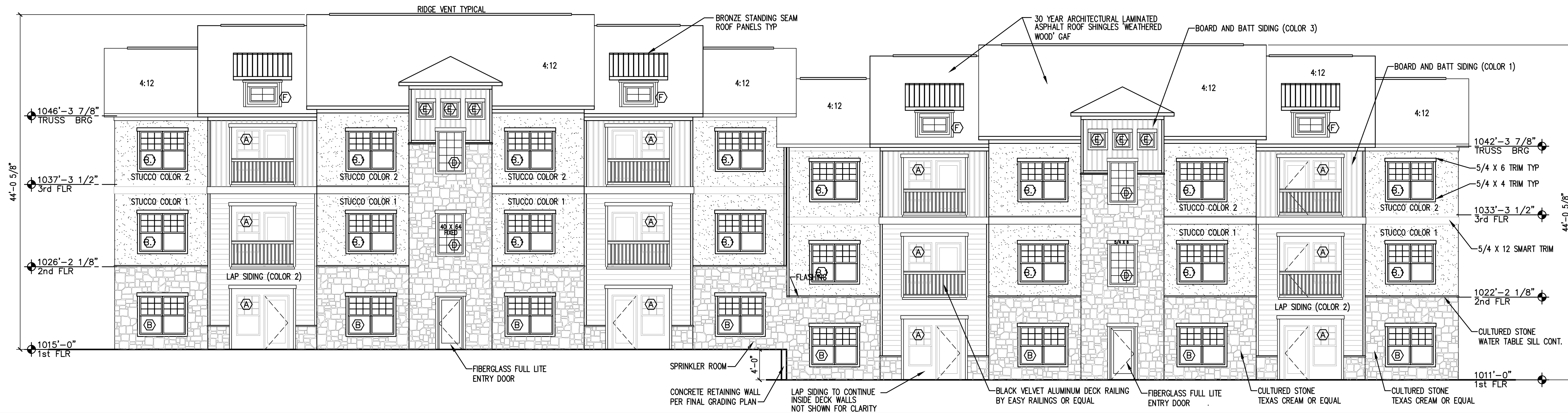
4 BUILDING A2-1 SOUTH ELEVATION
1/8" = 1'-0"



3 BUILDING A2-1 NORTH ELEVATION
1/8" = 1'-0"



2 BUILDING A2-1 WEST ELEVATION
1/8" = 1'-0"



1 BUILDING A2-1 EAST ELEVATION
1/8" = 1'-0"



BCS Design, Inc.

A Full Service
Architectural Firm
WWW.BCSARCHITECTS.COM
19920 West 161st Street
Olathe, Kansas 66062
Phone: (913) 780-4820
Fax: (913) 780-5088

BUILDING TYPE A2-1 TYPICAL ELEVATIONS

Summit Point Apartments Phase II
504 NE Chipman Road
Lee's Summit, Missouri 64063



Permit Set

PROJECT NO. : 2021-08
DATE : 01.15.2022
DRAWN BY : BCS STAFF
REVIEWED BY :

REVISED:

This drawing is COPYRIGHTED work by BCS Design, Inc. in either electronic or printed form. This drawing may not be photographed, traced, printed or copied in any manner without the written permission of BCS Design, Inc.

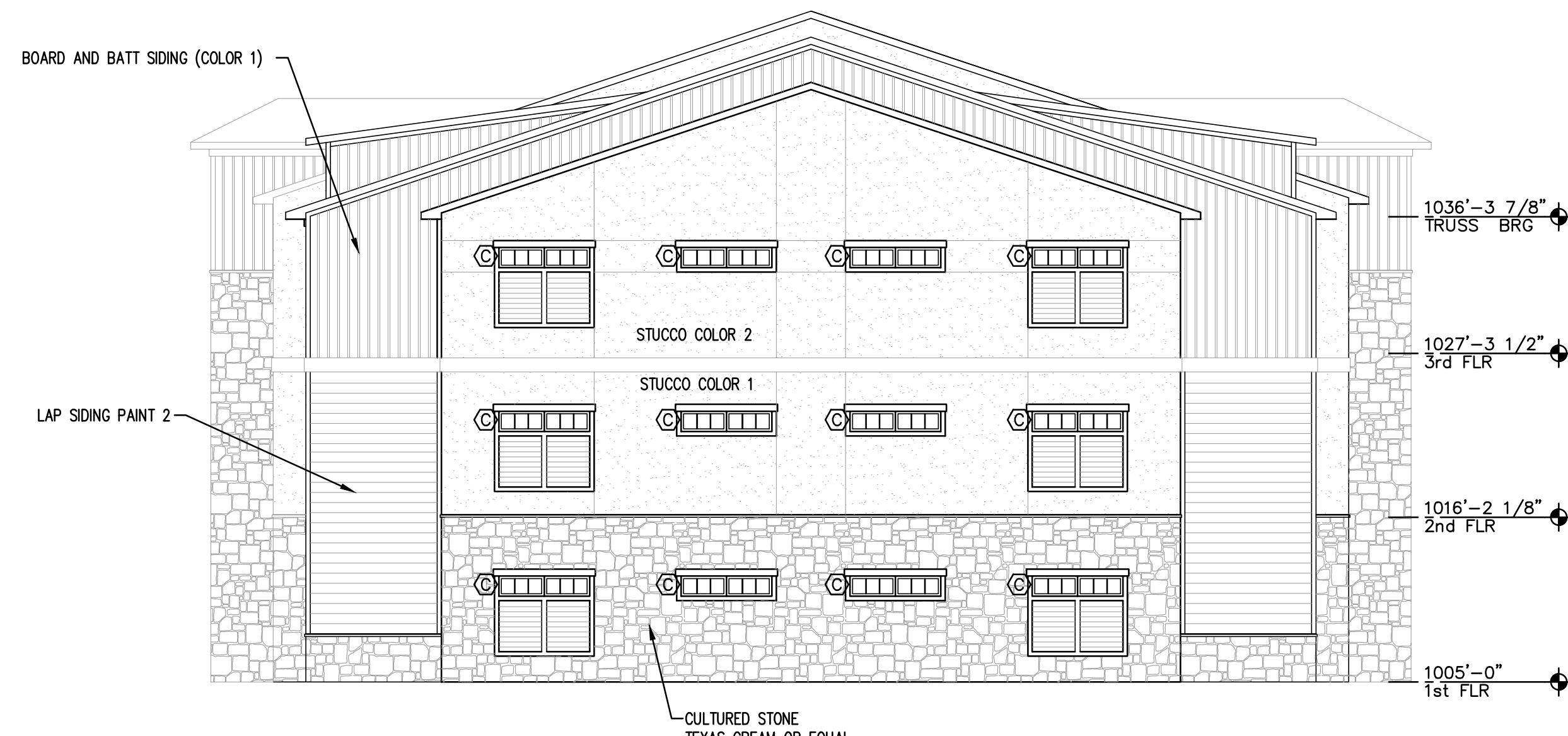
SHEET NO.

A200

copyright © 2022



4 BUILDING A2-2 WEST ELEVATION
1/8" = 1'-0"



3 BUILDING A2-2 EAST ELEVATION
1/8" = 1'-0"



2 BUILDING A2-2 NORTH ELEVATION
1/8" = 1'-0"



1 BUILDING A2-2 SOUTH ELEVATION
1/8" = 1'-0"

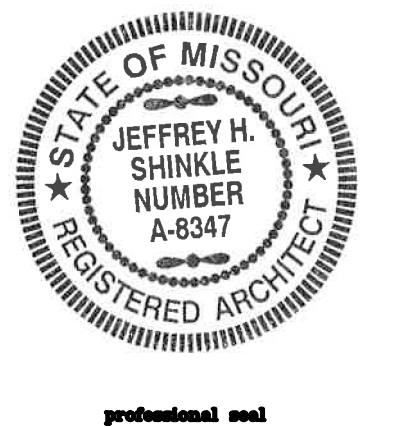


BCS Design, Inc.

A Full Service
Architectural Firm
WWW.BCSARCHITECTS.COM
19920 West 161st Street
Olathe, Kansas 66062
Phone: (913) 780-4820
Fax: (913) 780-5088

BUILDING TYPE A2-2 TYPICAL ELEVATIONS

Summit Point Apartments Phase II
504 NE Chipman Road
Lee's Summit, Missouri 64063



Permit Set

PROJECT NO. : 2021-08
DATE : 01.15.2022
DRAWN BY : BCS STAFF
REVIEWED BY :

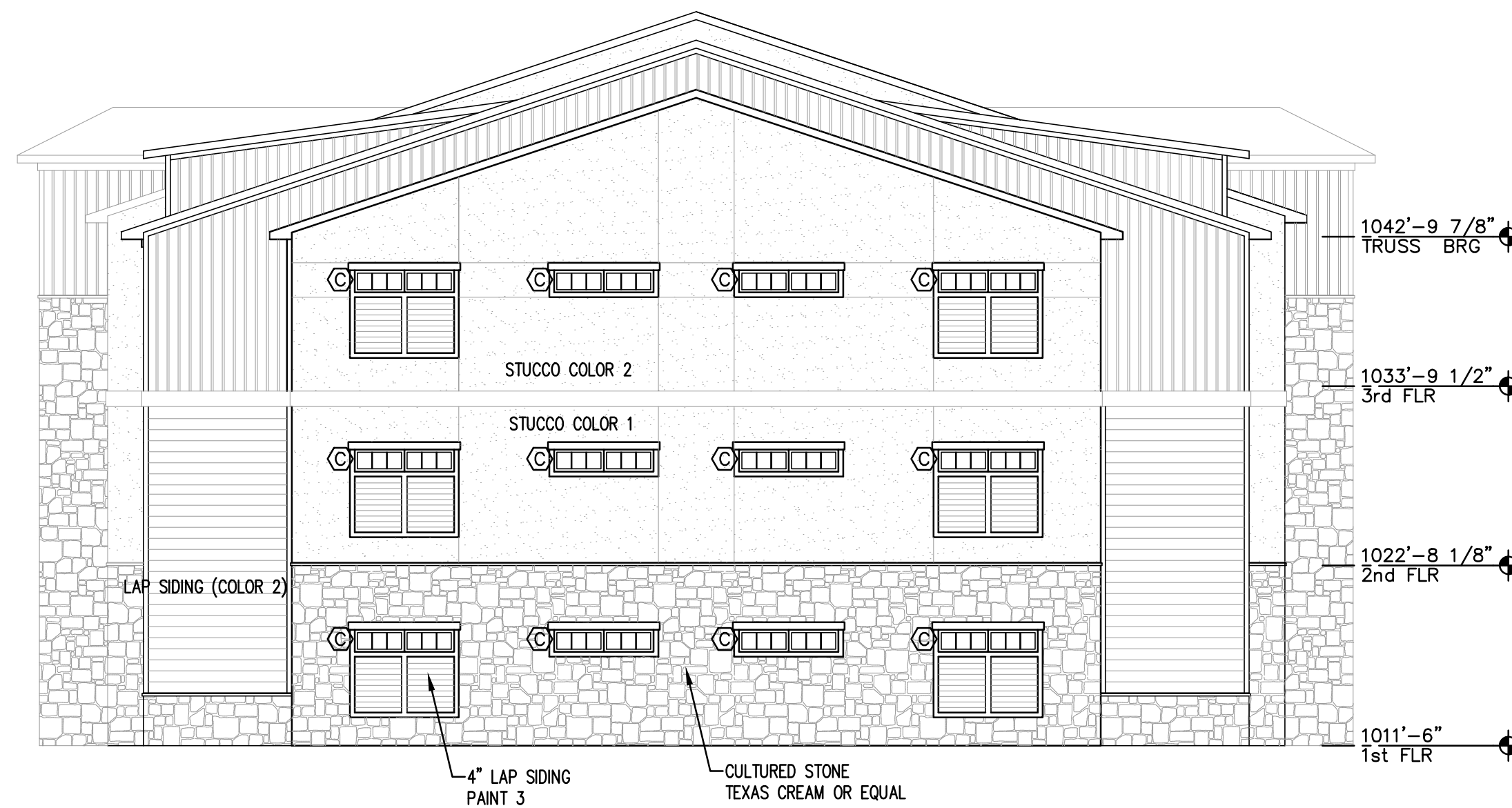
REVISED:

This drawing is a COPY/RIGHTED work by BCS Design, Inc. in either electronic or printed form. This drawing may not be photocopied, traced, printed or copied in any manner without the written permission of BCS Design, Inc.

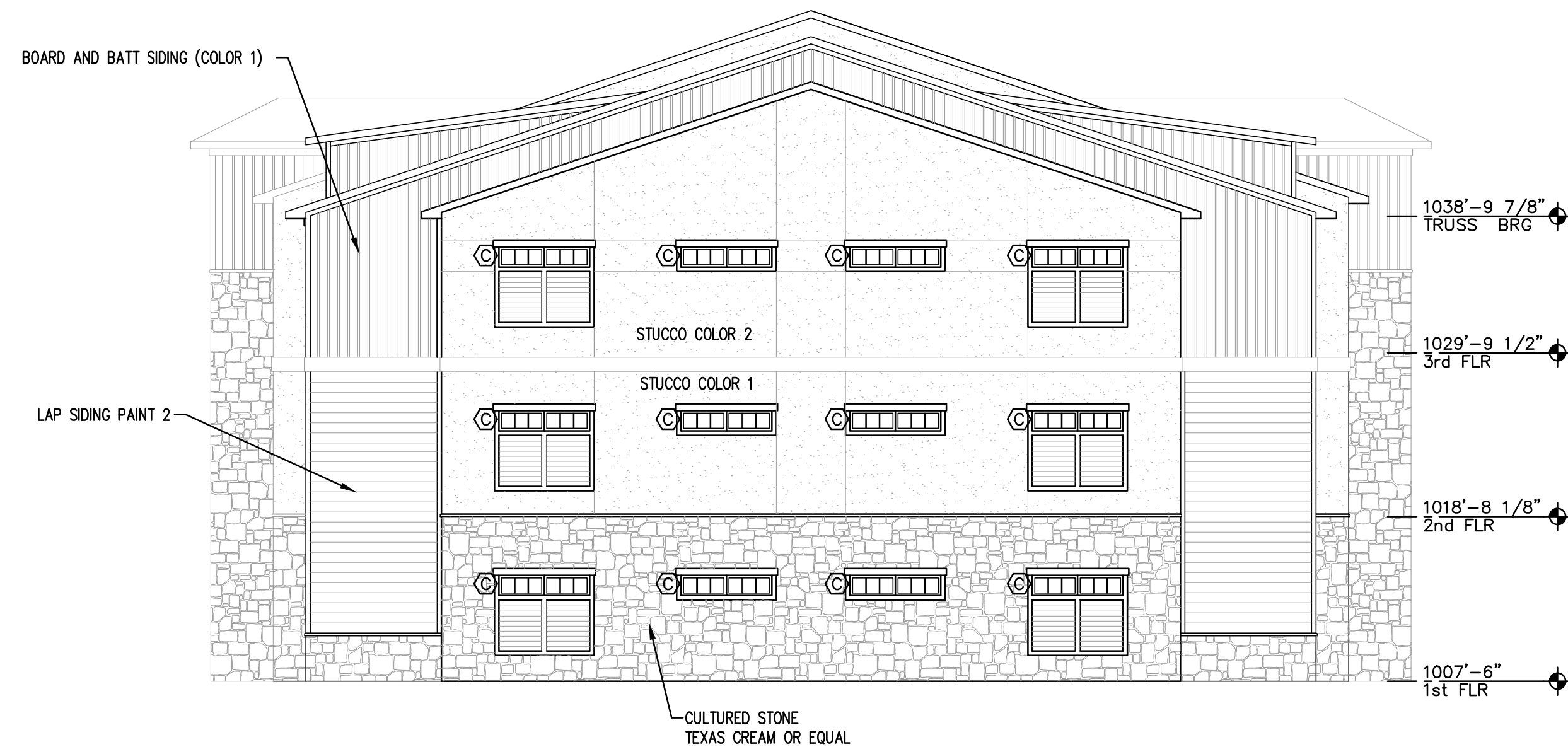
SHEET NO.

A201

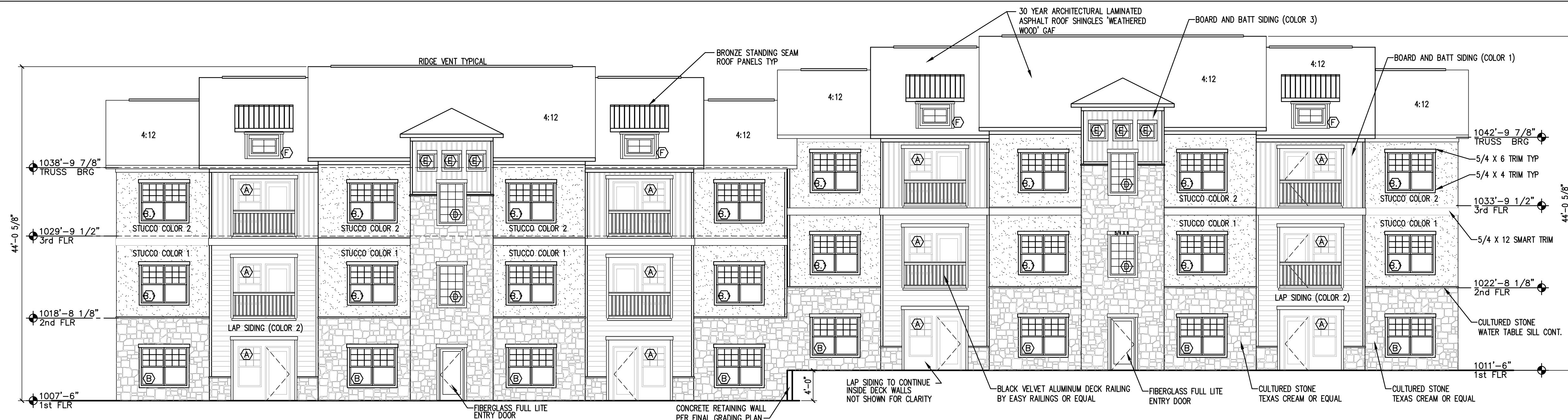
copyright © 2022



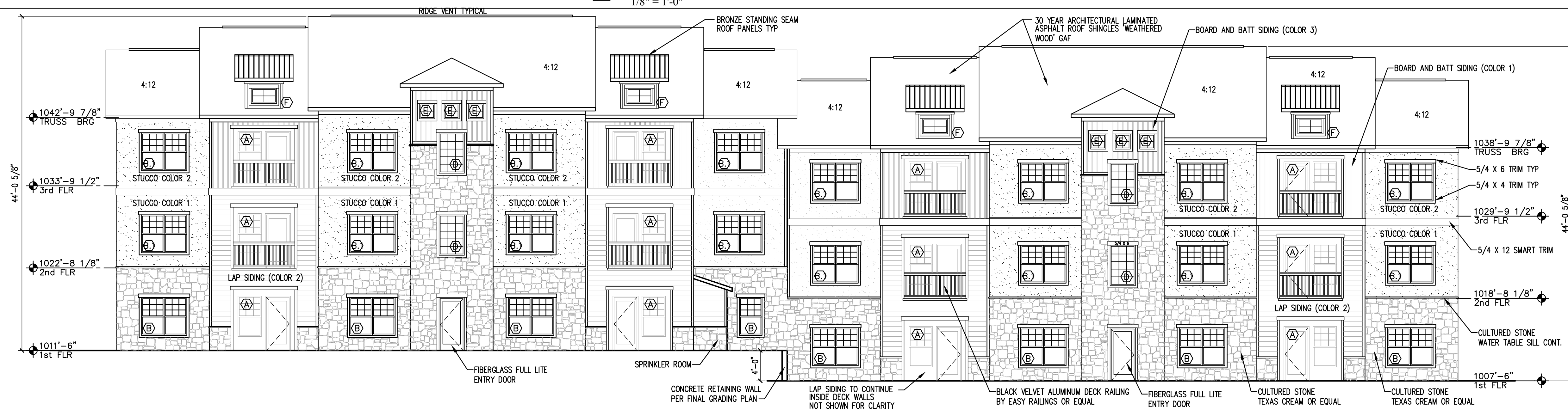
4 BUILDING A2-3 SOUTH ELEVATION
1/8" = 1'-0"



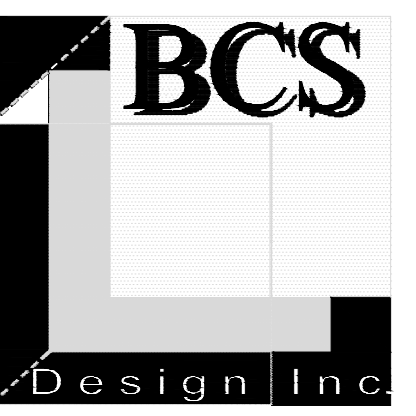
3 BUILDING A2-3 NORTH ELEVATION
1/8" = 1'-0"



2 BUILDING A2-3 WEST ELEVATION
1/8" = 1'-0"



1 BUILDING A2-3 EAST ELEVATION
1/8" = 1'-0"



BCS Design, Inc.

A Full Service
Architectural Firm
WWW.BCSARCHITECTS.COM
19920 West 161st Street
Olathe, Kansas 66062
Phone: (913) 780-4820
Fax: (913) 780-5088

BUILDING TYPE A2-3 TYPICAL ELEVATIONS

Summit Point Apartments Phase II
504 NE Chipman Road
Lee's Summit, Missouri 64063



PROJECT NO.: 2021-08
DATE: 01.15.2022
DRAWN BY: BCS STAFF
REVIEWED BY:

REVISED:

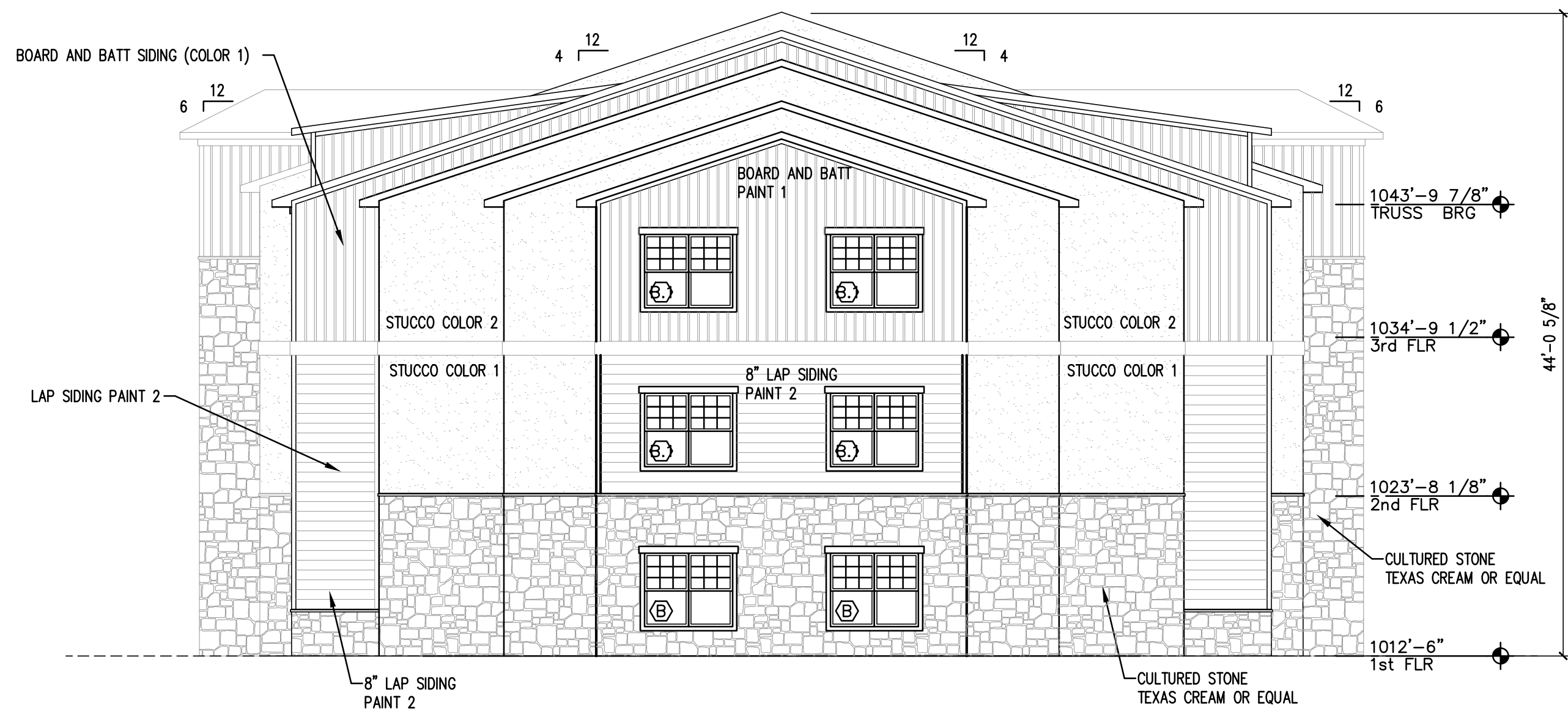
Permit Set

This drawing is COPYRIGHTED work by BCS Design, Inc. in either electronic or printed form. This drawing may not be photocopied, traced, printed or copied in any manner without the written permission of BCS Design, Inc.

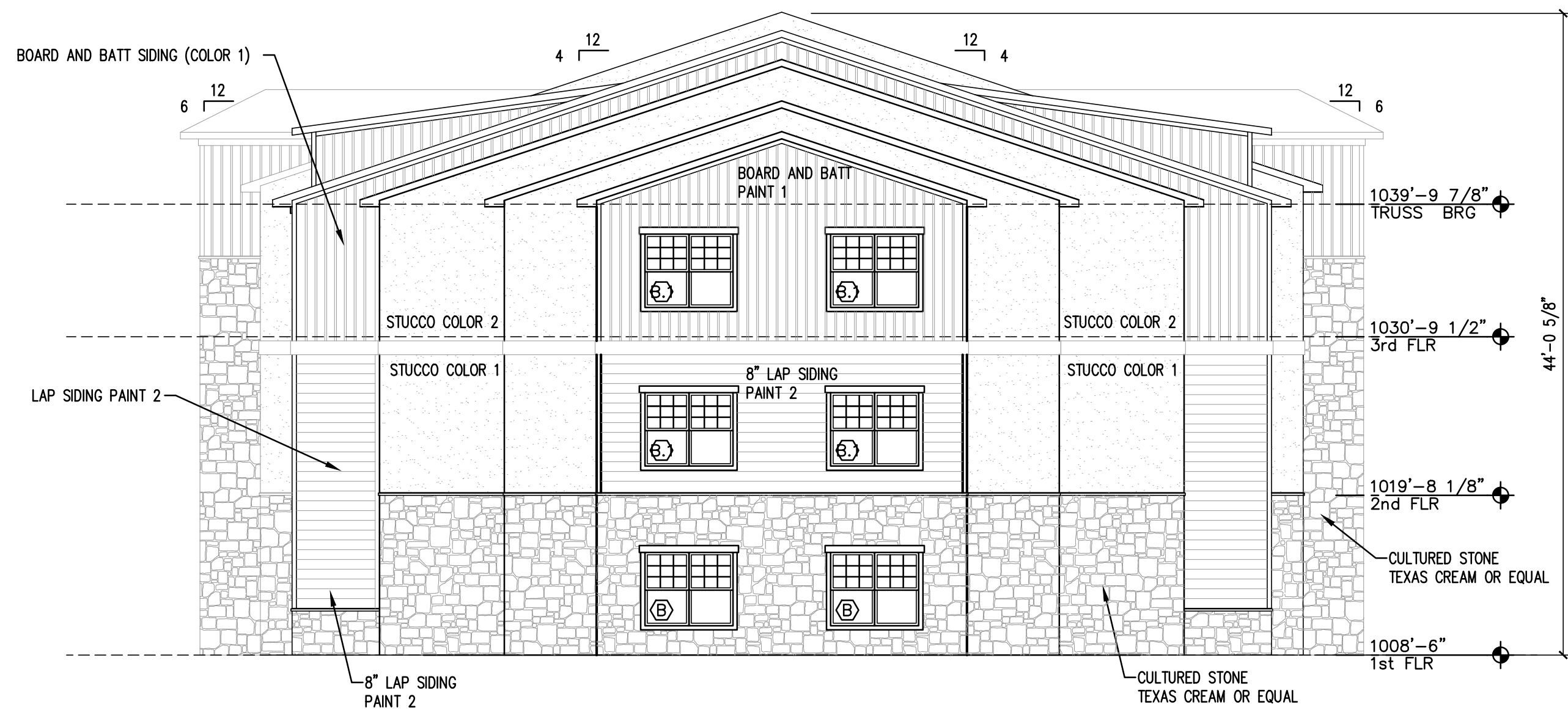
SHEET NO.

A202

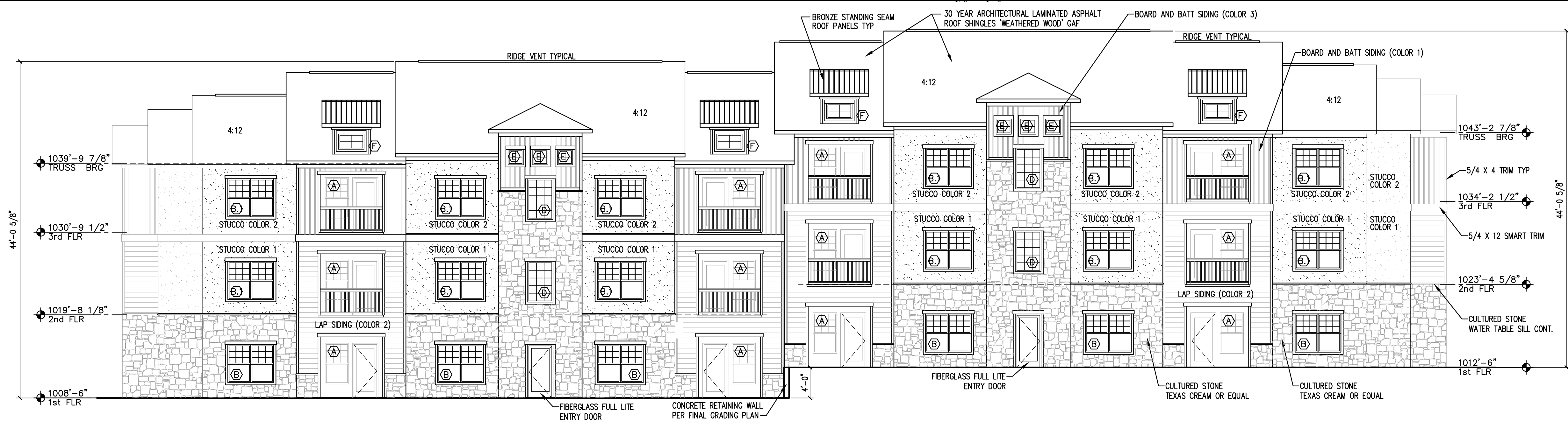
copyright © 2022



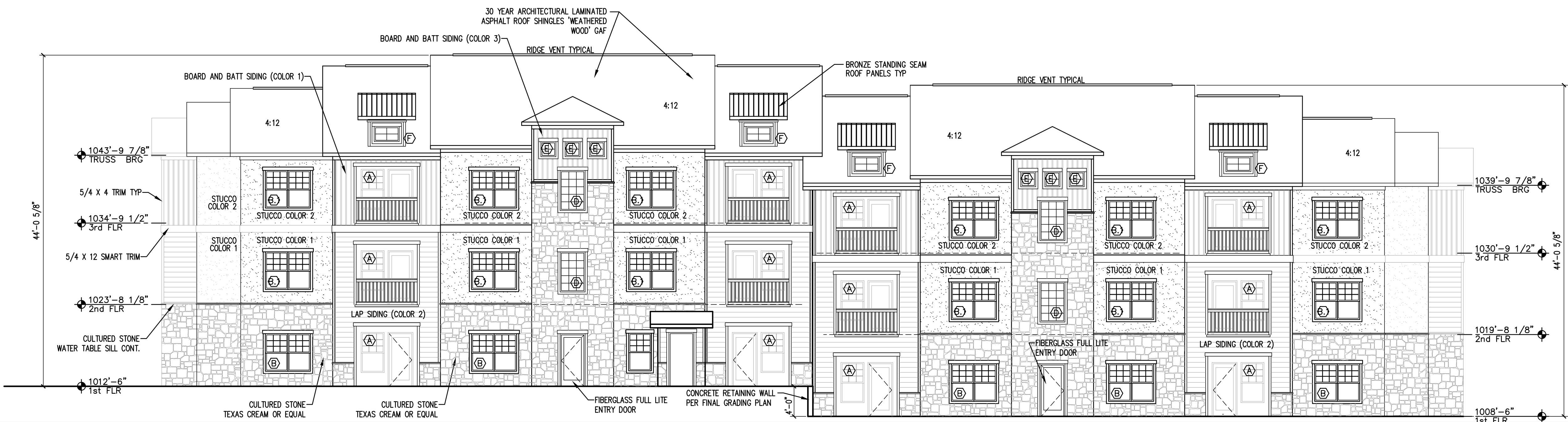
4 BUILDING B1-1 SOUTH ELEVATION
1/8" = 1'-0"



3 BUILDING B1-1 NORTH ELEVATION
1/8" = 1'-0"



2 BUILDING B1-1 WEST ELEVATION
1/8" = 1'-0"



1 BUILDING B1-1 EAST ELEVATION
1/8" = 1'-0"

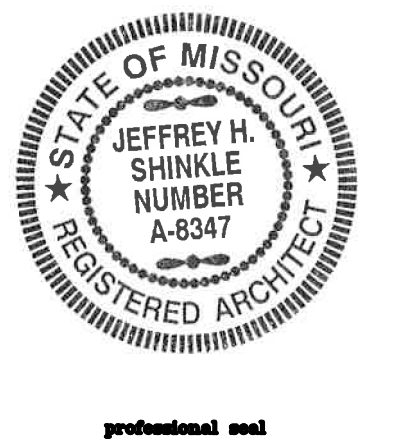


BCS Design, Inc.

A Full Service
Architectural Firm
WWW.BCSARCHITECTS.COM
19920 West 161st Street
Olathe, Kansas 66062
Phone: (913) 780-4820
Fax: (913) 780-5088

BUILDING TYPE B1-1 TYPICAL ELEVATIONS

Summit Point Apartments Phase II
504 NE Chipman Road
Lee's Summit, Missouri 64063



PROJECT NO.: 2021-08
DATE: 01.15.2022
DRAWN BY: BCS STAFF
REVIEWED BY:
REVISED:

Permit Set

This drawing is COPYRIGHTED work by BCS Design, Inc. in either electronic or printed form. This drawing may not be photographed, traced, copied or used in any manner without the written permission of BCS Design, Inc.

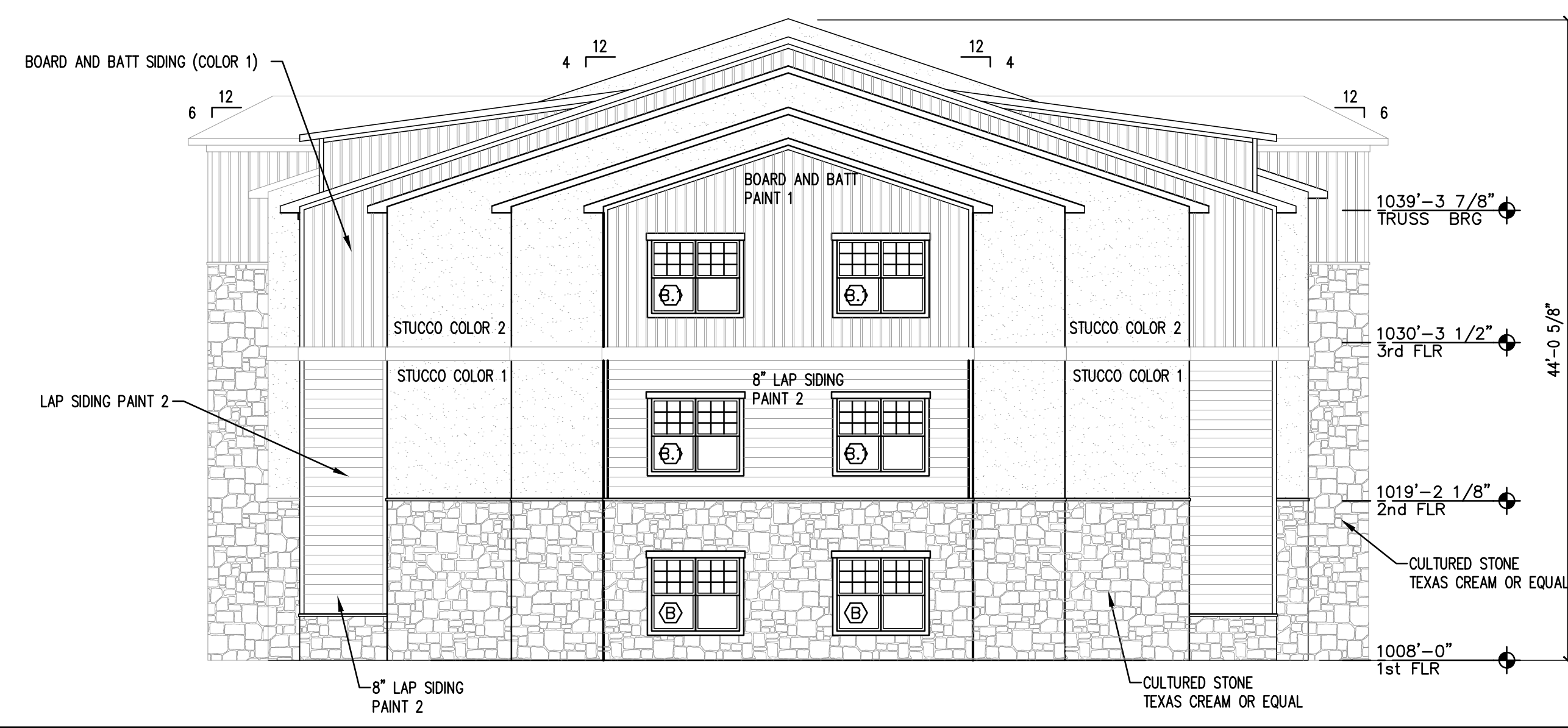
SHEET NO.

A203

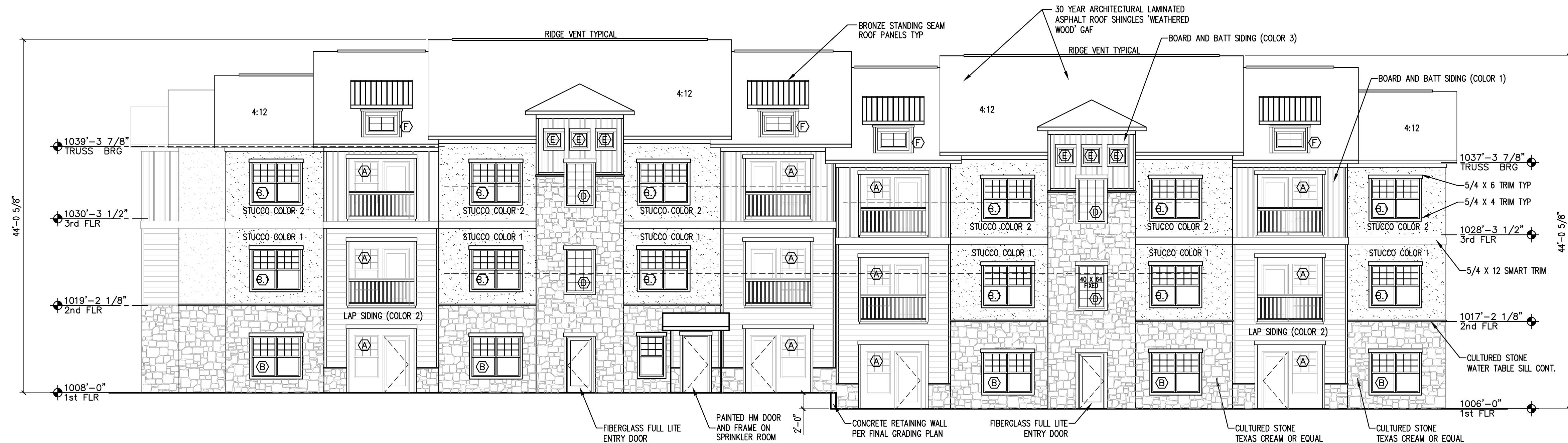
copyright © 2022



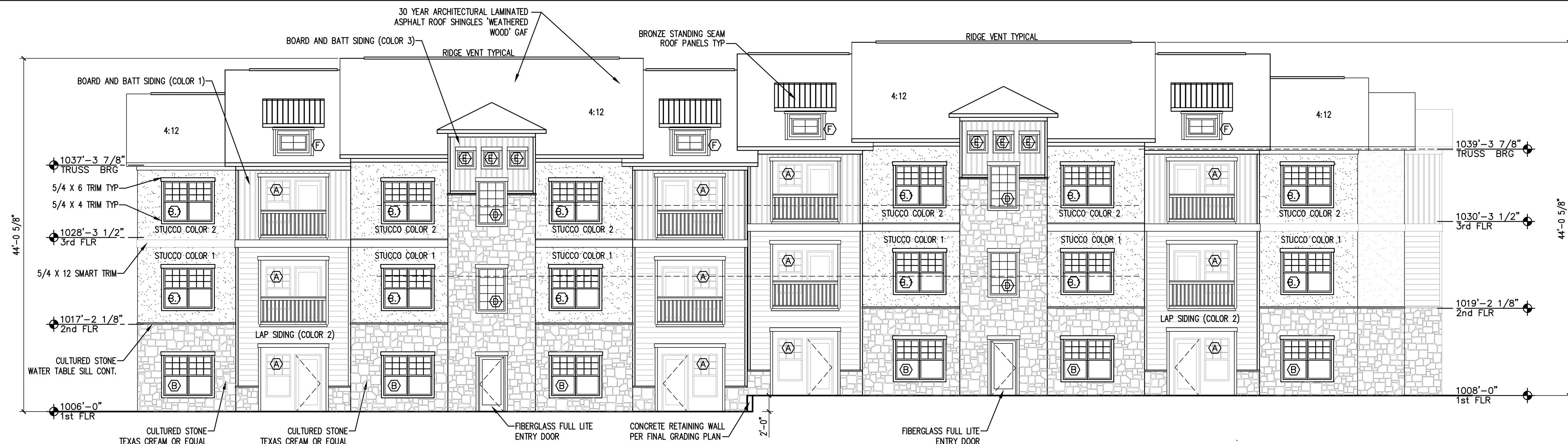
4 BUILDING C1-1 WEST ELEVATION
1/8" = 1'-0"



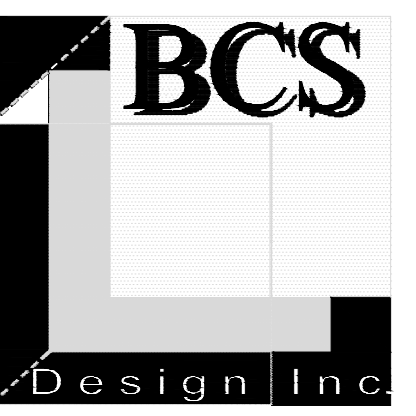
3 BUILDING C1-1 EAST ELEVATION
1/8" = 1'-0"



2 BUILDING C1-1 NORTH ELEVATION
1/8" = 1'-0"



1 BUILDING C1-1 SOUTH ELVATION
1/8" = 1'-0"



BCS Design, Inc.
A Full Service
Architectural Firm
WWW.BCSARCHITECTS.COM
19920 West 161st Street
Olathe, Kansas 66062
Phone: (913) 780-4820
Fax: (913) 780-5088

Summit Point Apartments Phase II
504 NE Chipman Road
Lee's Summit, Missouri 64063

BUILDING TYPE C1-1 TYPICAL ELEVATIONS



PROJECT NO. : 2021-08
DATE : 01.15.2022
DRAWN BY : BCS STAFF
REVIEWED BY :
REVISED:

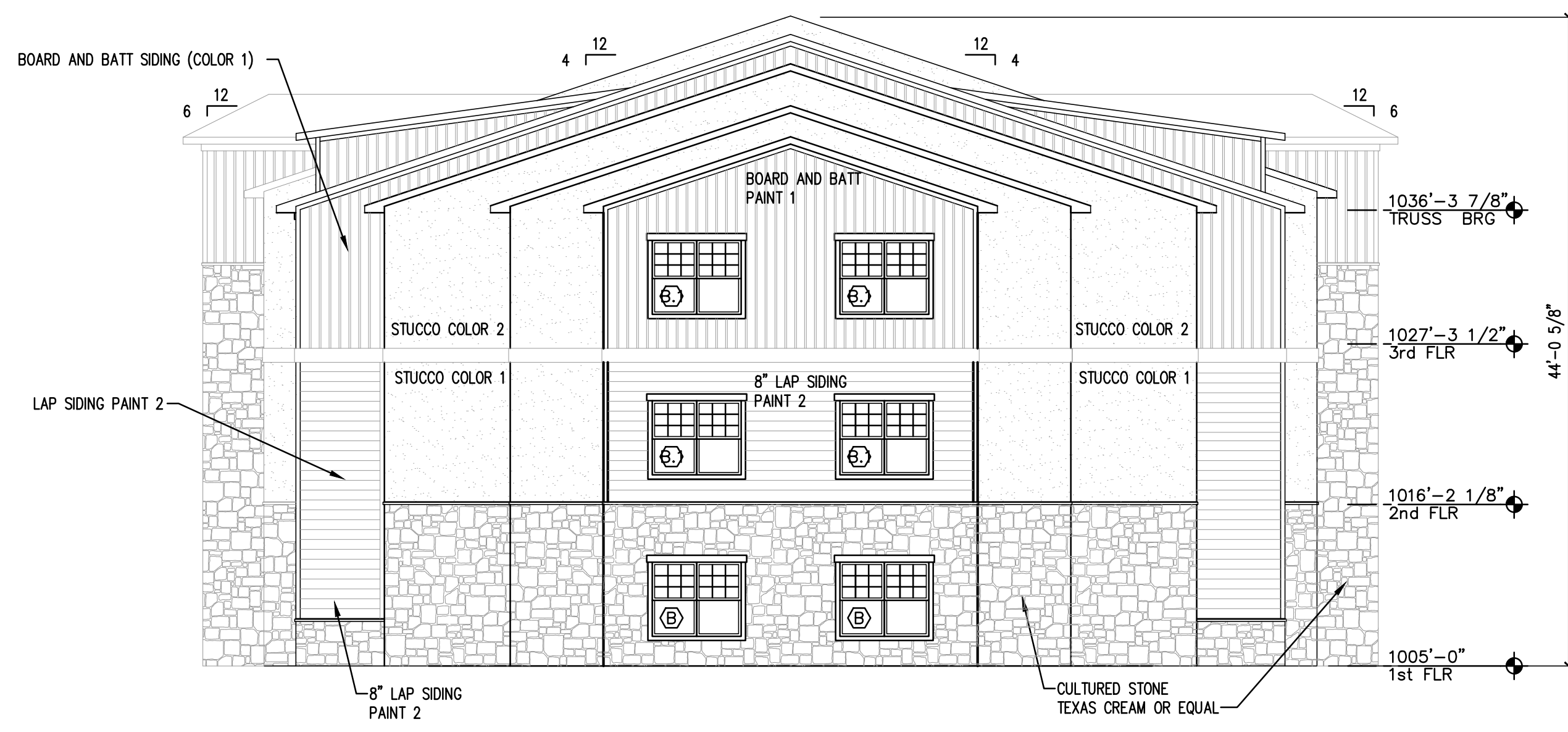
Permit Set

This drawing is COPYRIGHTED work by BCS Design, Inc. in either electronic or printed form. This drawing may not be photocopied, traced, printed or copied in any manner without the written permission of BCS Design, Inc.

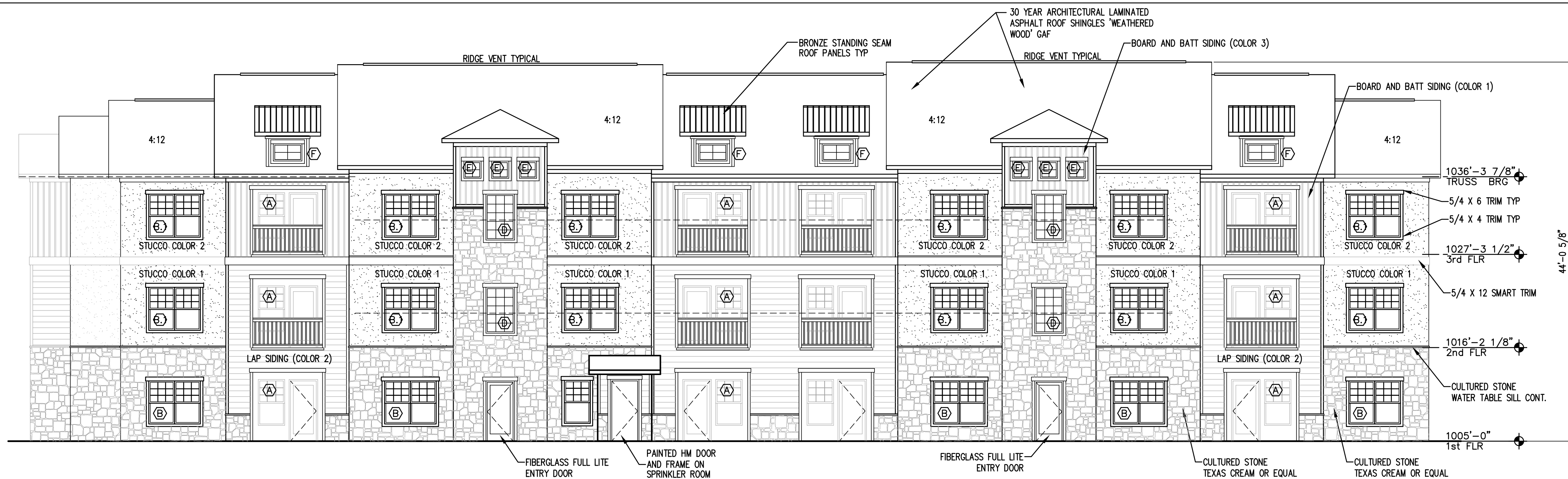
SHEET NO.
A204
copyright © 2022



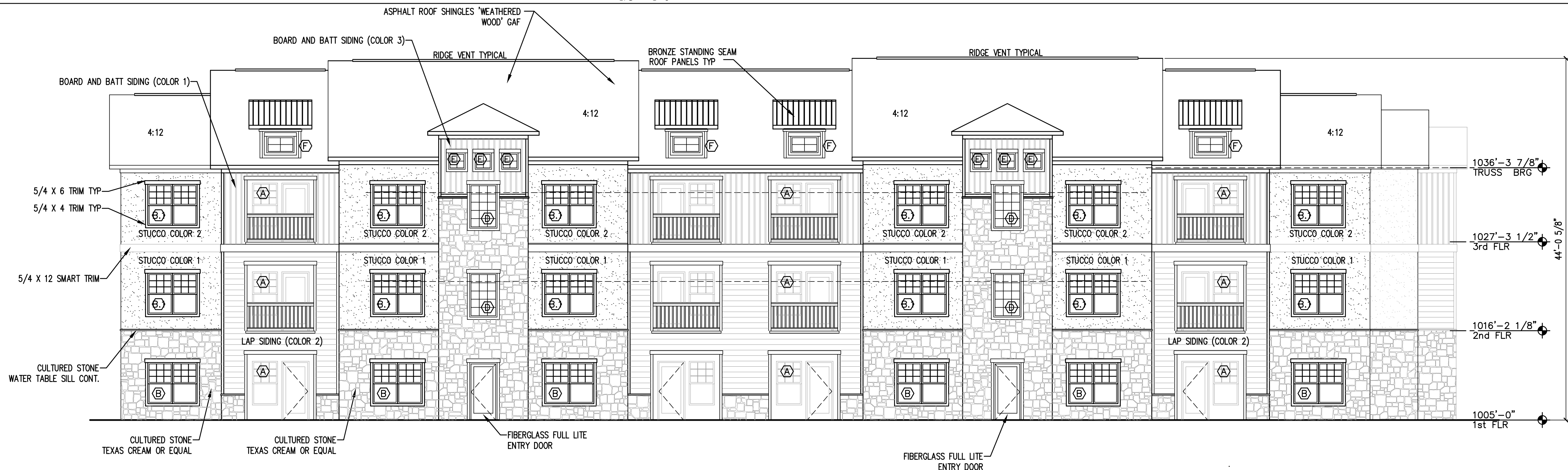
4 BUILDING C1-2 EAST ELEVATION
1/8" = 1'-0"



3 BUILDING C1-2 WEST ELEVATION
1/8" = 1'-0"



2 BUILDING C1-2 SOUTH ELEVATION
1/8" = 1'-0"



1 BUILDING C1-2 NORTH ELEVATION
1/8" = 1'-0"



BCS Design, Inc.
A Full Service
Architectural Firm
WWW.BCSARCHITECTS.COM
19920 West 161st Street
Olathe, Kansas 66062
Phone: (913) 780-4820
Fax: (913) 780-5088

BUILDING TYPE C1-2 TYPICAL ELEVATIONS

Summit Point Apartments Phase II
504 NE Chipman Road
Lee's Summit, Missouri 64063



PROJECT NO. : 2021-08
DATE : 01.15.2022
DRAWN BY : BCS STAFF
REVIEWED BY :
REVISED:

Permit Set

This drawing is COPYRIGHTED work by BCS Design, Inc. in either electronic or printed form. This drawing may not be photocopied, traced, printed or copied in any manner without the written permission of BCS Design, Inc.

SHEET NO.
A205
copyright © 2022