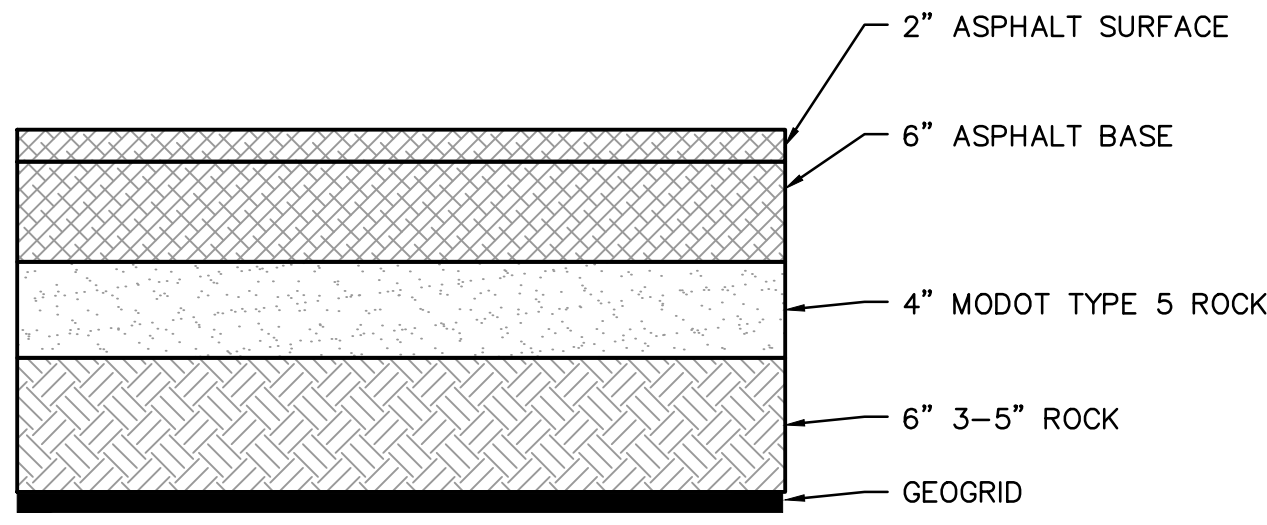


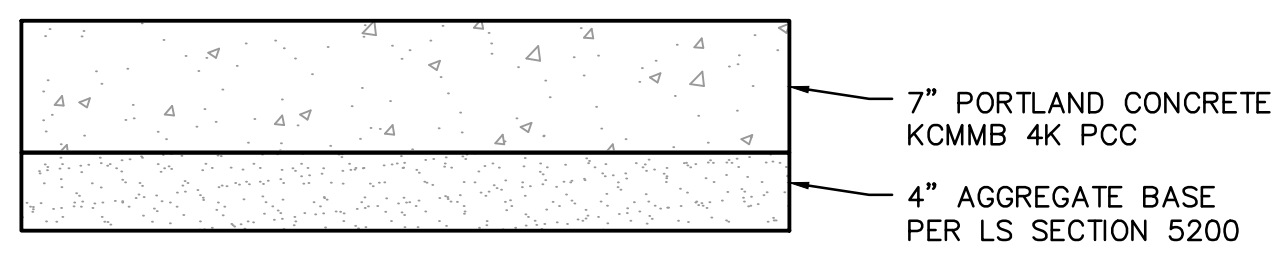
REFER TO THE GEOTECHNICAL REPORT PROVIDED BY CFS ENGINEERS, PROJECT NO. 20-1074 AND DATED JUNE 8, 2020 AND ALL ADDENDUMS FOR ADDITIONAL REQUIREMENTS.

LIGHT DUTY ASPHALT PAVEMENT SECTION
NOT TO SCALE

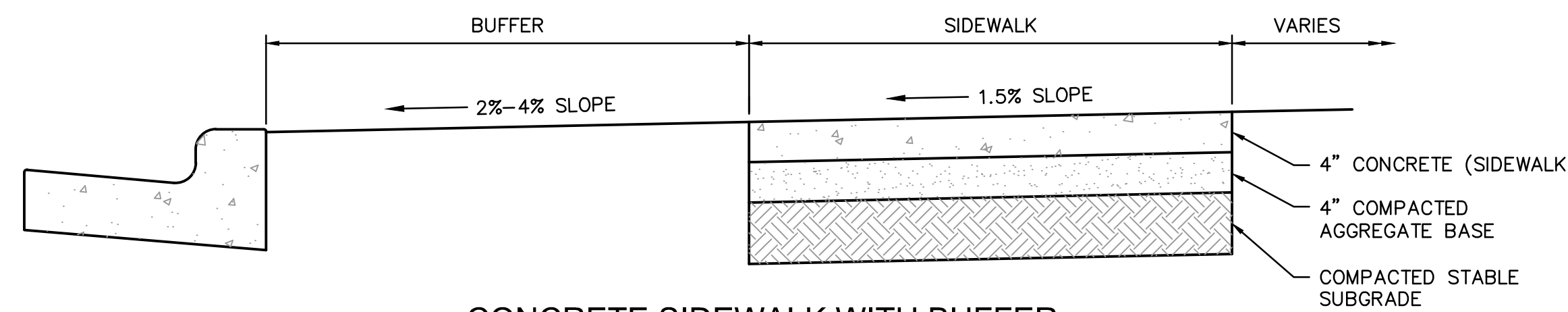


REFER TO THE GEOTECHNICAL REPORT PROVIDED BY CFS ENGINEERS, PROJECT NO. 20-1074 AND DATED JUNE 8, 2020 AND ALL ADDENDUMS FOR ADDITIONAL REQUIREMENTS.

HEAVY DUTY ASPHALT PAVEMENT SECTION
NOT TO SCALE



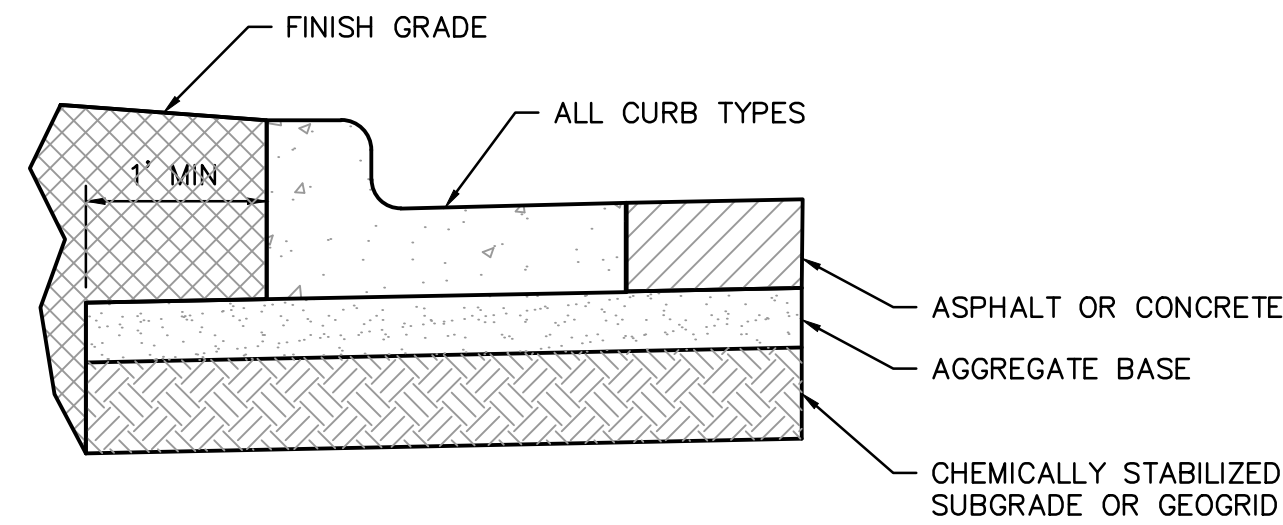
HEAVY DUTY CONCRETE PAVEMENT SECTION
NOT TO SCALE



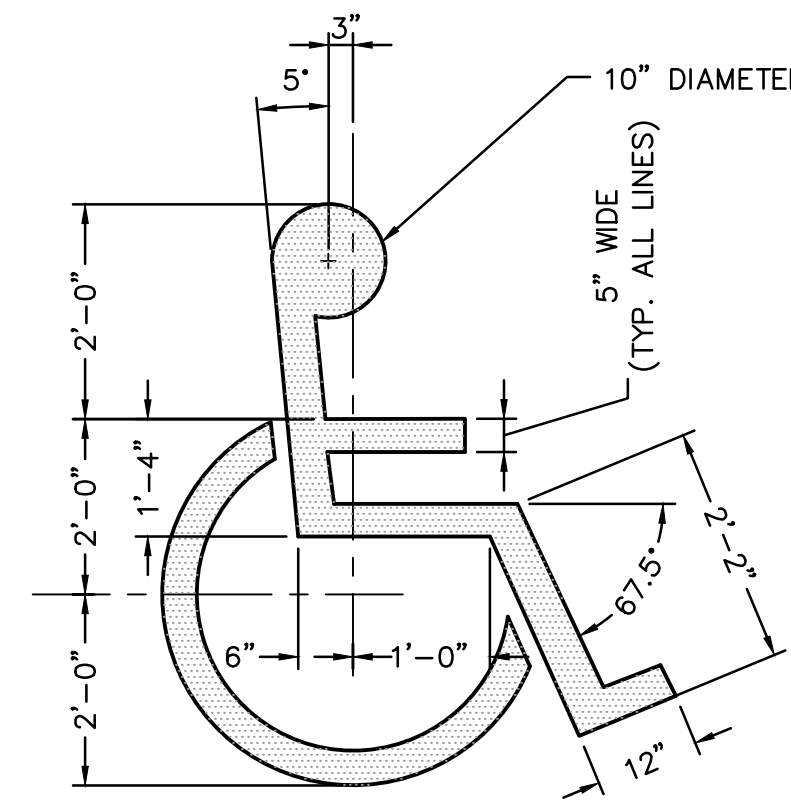
CONCRETE SIDEWALK WITH BUFFER
NOT TO SCALE

GENERAL NOTES:

- SUBGRADE MUST BE OF STABLE, COMPACTED EARTH AND SHALL BE OVERLAYED WITH 4" COMPACTED DENSE GRADED AGGREGATE BASE.
- 1.5% CROSS SLOPE MUST BE MAINTAINED THROUGH DRIVEWAYS.
- KCMMB 4K CONCRETE MIX SHALL BE REQUIRED FOR ALL SIDEWALKS OR AS APPROVED BY THE CITY INSPECTOR.
- ALL SIDEWALKS SHALL MEET CURRENT PUBLIC RIGHT OF WAY ACCESSIBILITY GUIDELINES (PROWAG) AN EXPANSION JOINT SHALL BE PLACED AT A MAXIMUM OF 150 FT. CONSTRUCTION JOINTS SHALL BE PLACED THE SAME WIDTH OF SIDEWALK, BUT NO GREATER THAN 10 FT.
- SIDEWALK FINISHING (NO PICTURE FRAMING) AS DIRECTED BY CITY INSPECTOR.
- WHITE CURING COMPOUND MUST BE APPLIED UNIFORMLY TO THE CONCRETE SURFACE IMMEDIATELY AFTER FINAL FINISHING.

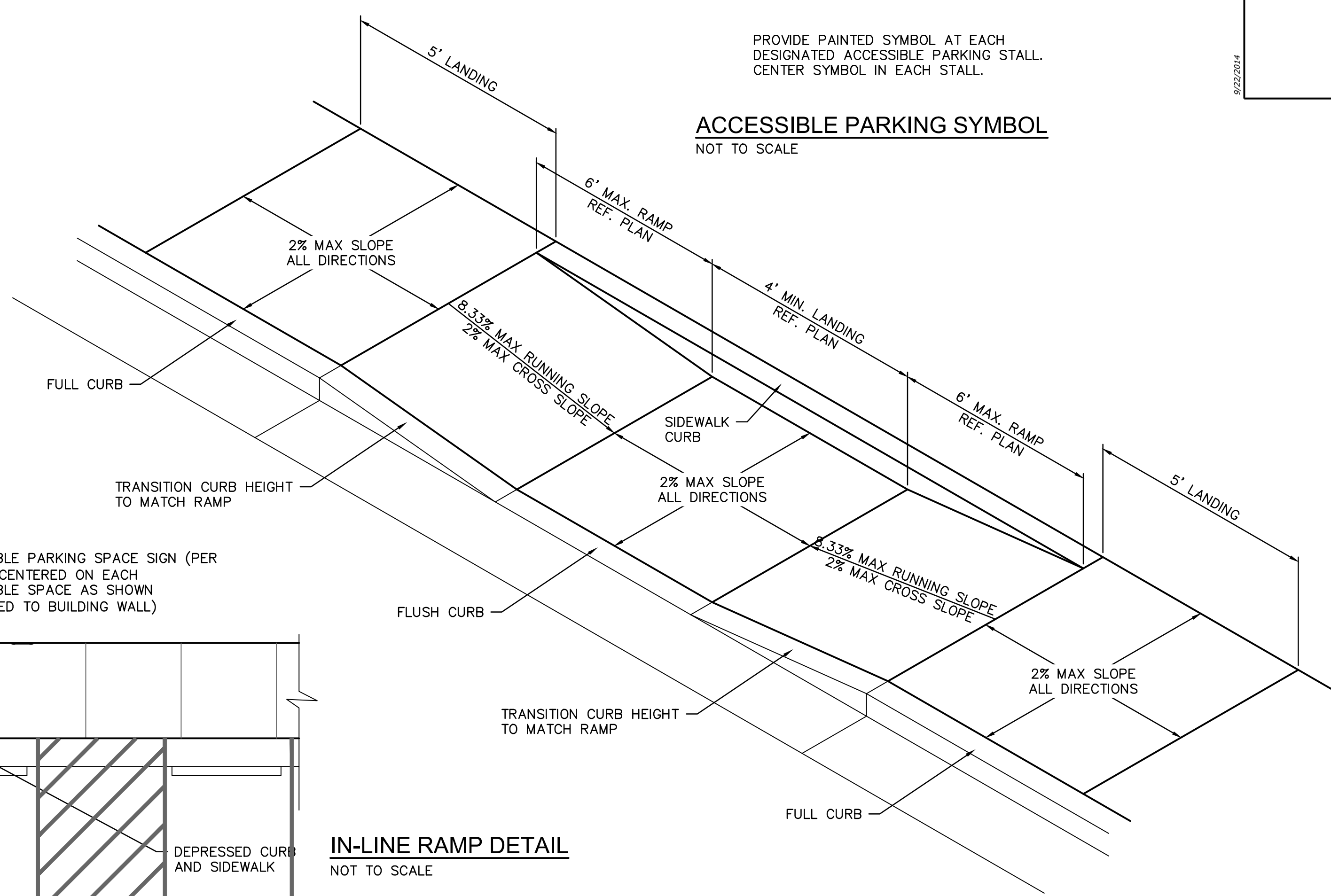


TYPICAL SUBGRADE PLACEMENT UNDER CURB
NOT TO SCALE



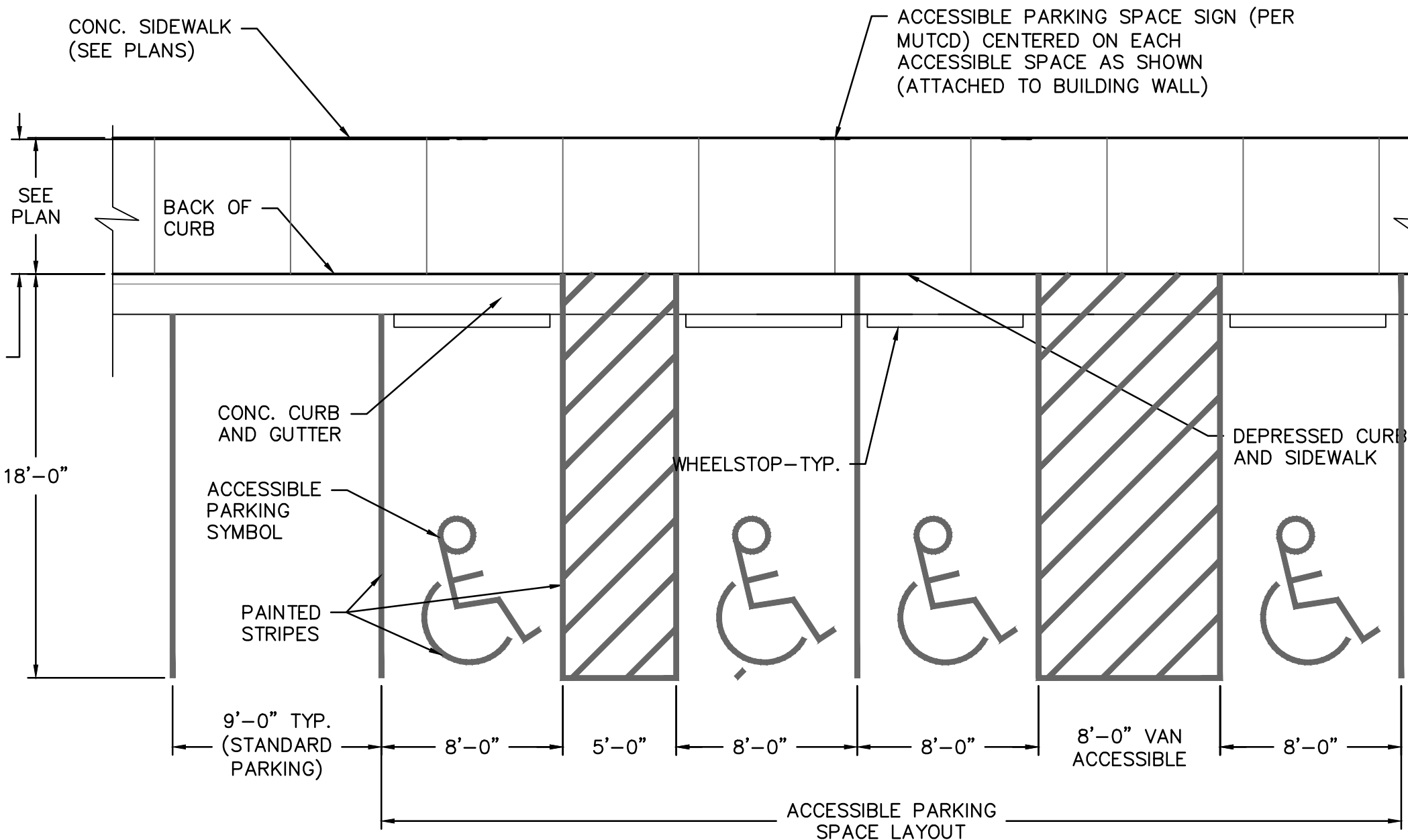
PROVIDE PAINTED SYMBOL AT EACH DESIGNATED ACCESSIBLE PARKING STALL. CENTER SYMBOL IN EACH STALL.

ACCESSIBLE PARKING SYMBOL
NOT TO SCALE



NOTE

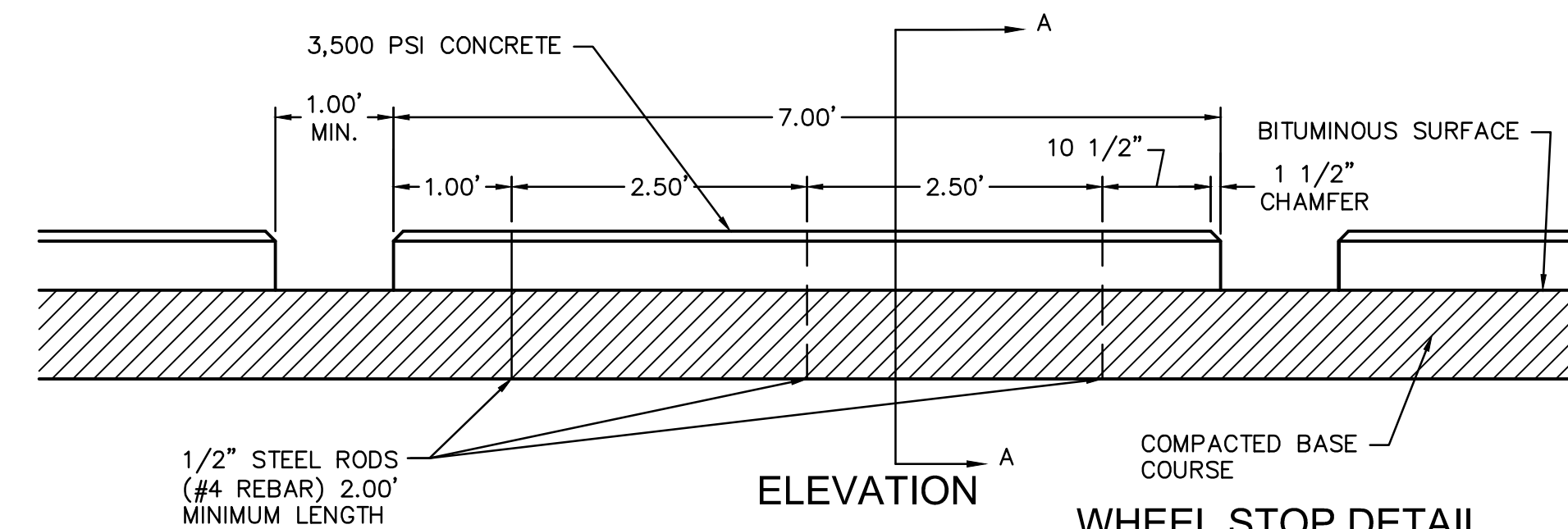
ACCESSIBLE PARKING SYMBOL AND SIGNAGE SHALL COMPLY WITH THE APPLICABLE RECOMMENDATIONS OF THE MANUAL OF UNIFORM TRAFFIC CONTROL DEVICES (MUTCD).



TYPICAL ADA PARKING SPACE LAYOUT DETAIL
NOT TO SCALE

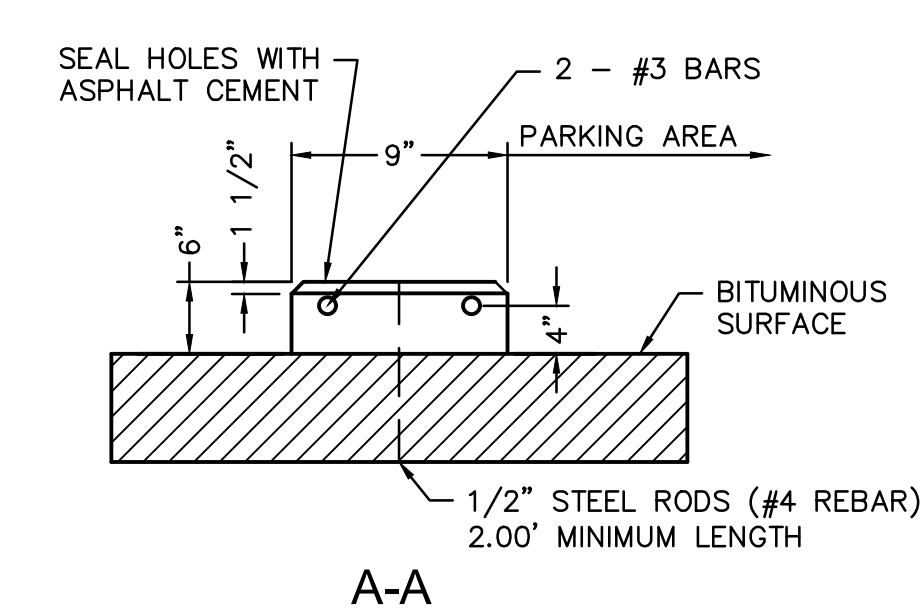
NOTE:

ANCHOR RODS TO BE SLEEVED OF GREASED THRU CONCRETE CURBS TO PERMIT RELOCATION OF CURBS.

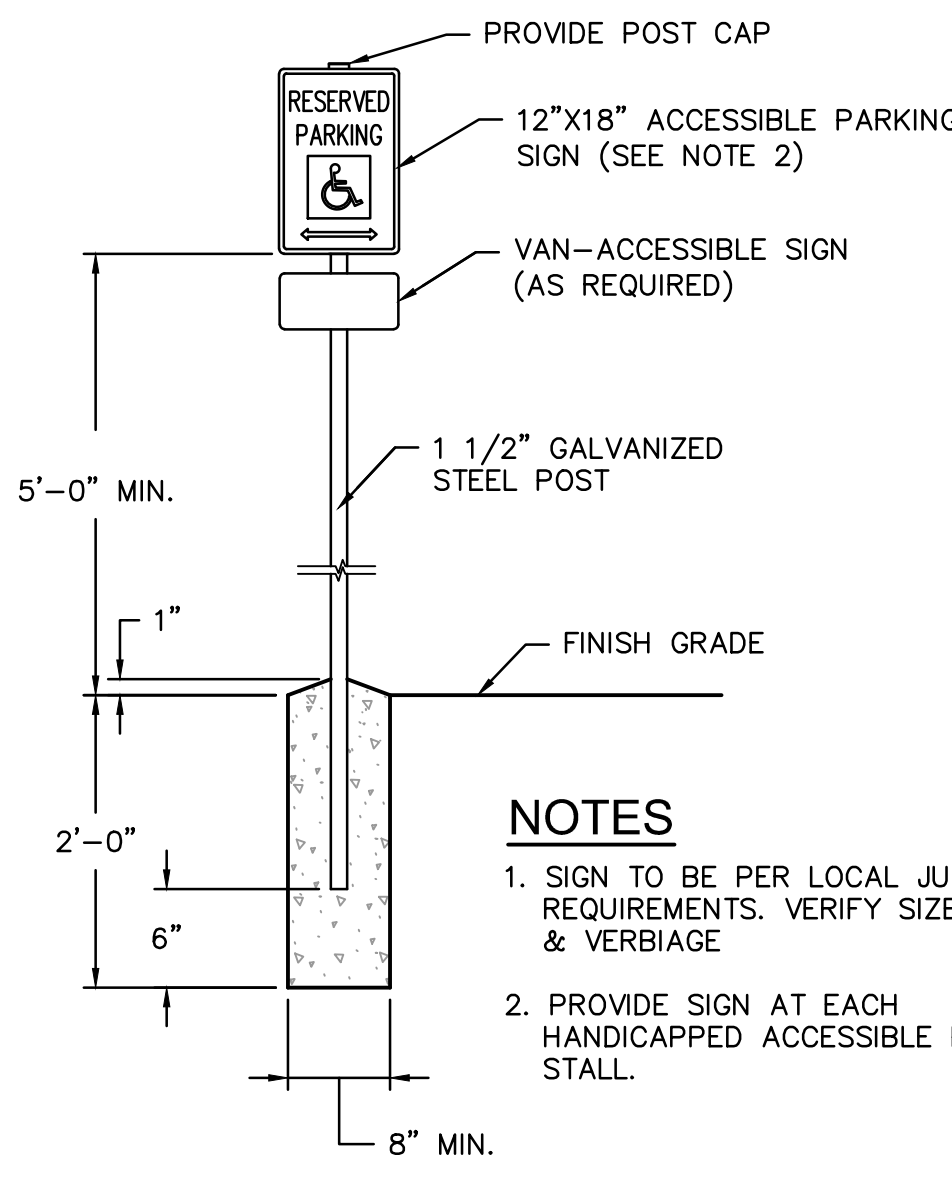


ELEVATION

WHEEL STOP DETAIL
NOT TO SCALE



A-A



NOTES

- SIGN TO BE PER LOCAL JURISDICTION REQUIREMENTS. VERIFY SIZE, SHAPE & VERBIAGE
- PROVIDE SIGN AT EACH HANDICAPPED ACCESSIBLE PARKING STALL.

ACCESSIBLE PARKING SPACE SIGNAGE
NOT TO SCALE

CULVERT SIZE D (inches)	RIPRAP CLASS	LENGTH OF APRON L (feet)	DEPTH OF APRON H (feet)	ESTIMATED RIPRAP QUANTITY (CY)	ESTIMATED GEOTEXTILE QUANTITY (SY)
12	2	4	1.5	1	5
18	2	6	1.5	2.2	9
24	2	8	1.5	3.9	14
30	3	12.5	2	10.9	28
36	3	16	2	15.6	37
42	4	21	2.5	34.1	63
48	4	24	2.5	44.5	79
12	2	6	1.5	1.7	8
18	2	8	1.5	3.2	12
24	2	10	1.5	5.2	17
30	3	14.5	2	13.3	33
36	3	17	2	18.5	43
42	4	23	2.5	38.7	70
48	4	26	2.5	49.8	87

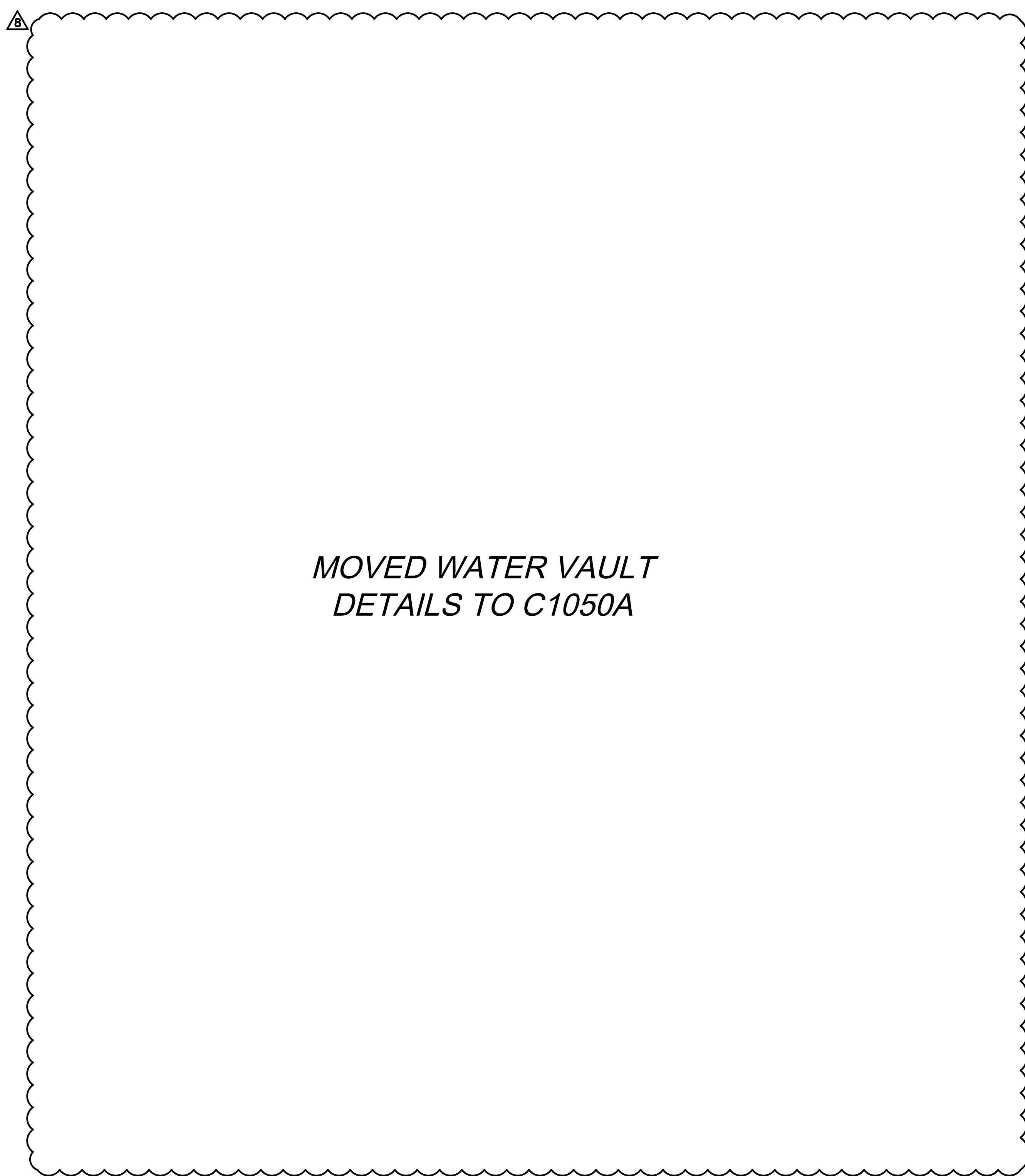
CULVERT SIZE D (inches)	RIPRAP CLASS	LENGTH OF APRON L (feet)	DEPTH OF APRON H (feet)	ESTIMATED RIPRAP QUANTITY (CY)	ESTIMATED GEOTEXTILE QUANTITY (SY)
12	2	4	1.5	0.9	5
18	2	6	1.5	2	8
24	2	8	1.5	3.6	13
30	3	12.5	2	9.3	24
36	3	15	2	13.4	32
42	4	21	2.5	27.3	53
48	4	24	2.5	35.6	65
12	2	6	1.5	1.4	6
18	2	8	1.5	2.7	10
24	2	10	1.5	4.5	15
30	3	14.5	2	10.8	27
36	3	17	2	15.2	36
42	4	23	2.5	29.9	57
48	4	26	2.5	38.6	70

STATE: PROJECT: SHEET NUMBER:

NOTE:

- Use for aprons serving culverts with slopes of less than 10%.
- Furnish geotextile conforming to Subsection 714.01(g).
- Excavation for placement of riprap will not be measured for payment.

U.S. DEPARTMENT OF TRANSPORTATION
FEDERAL HIGHWAY ADMINISTRATION
CENTRAL FEDERAL LANDS HIGHWAY DIVISION
U.S. CUSTOMARY DETAIL
PLACED RIPRAP AT CULVERT OUTLETS
DETAIL C251-50



MOVED WATER VAULT DETAILS TO C1050A

DWG: F:\2020\0001-0500\020-0103\40-Design\AutoCAD\Final Plans\Sheets\GNCA\CONSTRUCTION DOCUMENTS\C-DT101_0200103.dwg USER: lperson DATE: Feb 08, 2022 10:22am XREFS: C:\4LS_PBASE_80330 C:\4LS_PBASE_61023 C:\4LS_PBASE_80330 C:\4LS_PBASE_61023 C:\PTBLK_0200103 C:\PBASE_80330 C:\PBASE_80330 TE DETAIL

DLR Group
© DLR Group
80200 DLR Group, Inc. a Missouri corporation.
Missouri State Certificate of Authority #00939

olsson
OLSSON, CIVIL ENGINEERING
MO. CERTIFICATE OF AUTHORITY #001992
7301 West 133rd Street, Suite 200
Overland Park, KS 66214-7750
TEL: 913.381.1170
www.olsson.com

LEE'S SUMMIT MIDDLE SCHOOL #4
LEE'S SUMMIT R-7 SCHOOL DISTRICT
1001 SE BAILEY ROAD
LEE'S SUMMIT, MO 64881

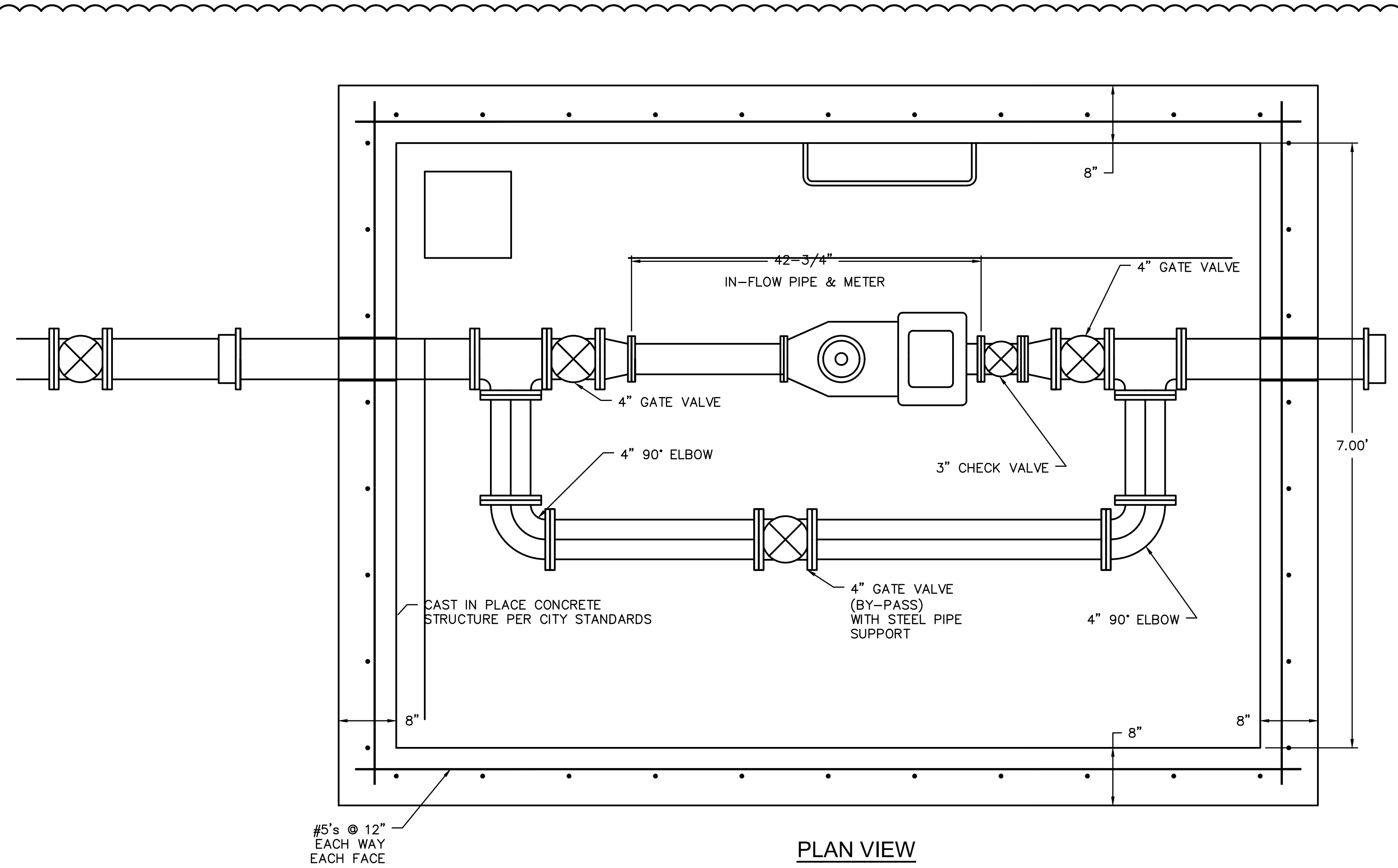
PACKAGE 2 - STRUCTURAL & SITE UTILITIES
ISSUED FOR PERMIT
08/28/20

PR002R 01.14.21
CPR 1 12.16.21
ASI-40 02.10.22

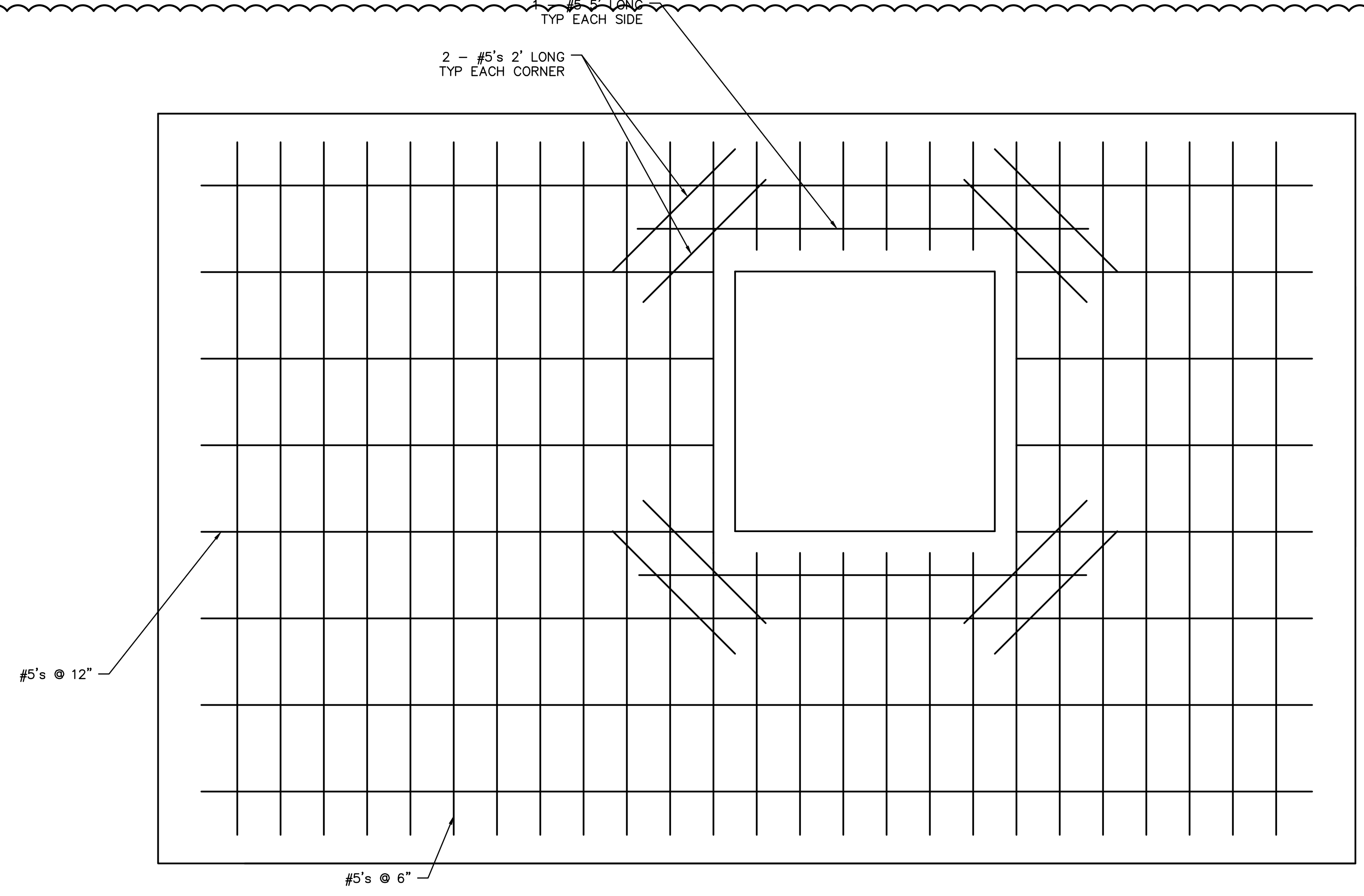
13-20102-00

STANDARD DETAILS

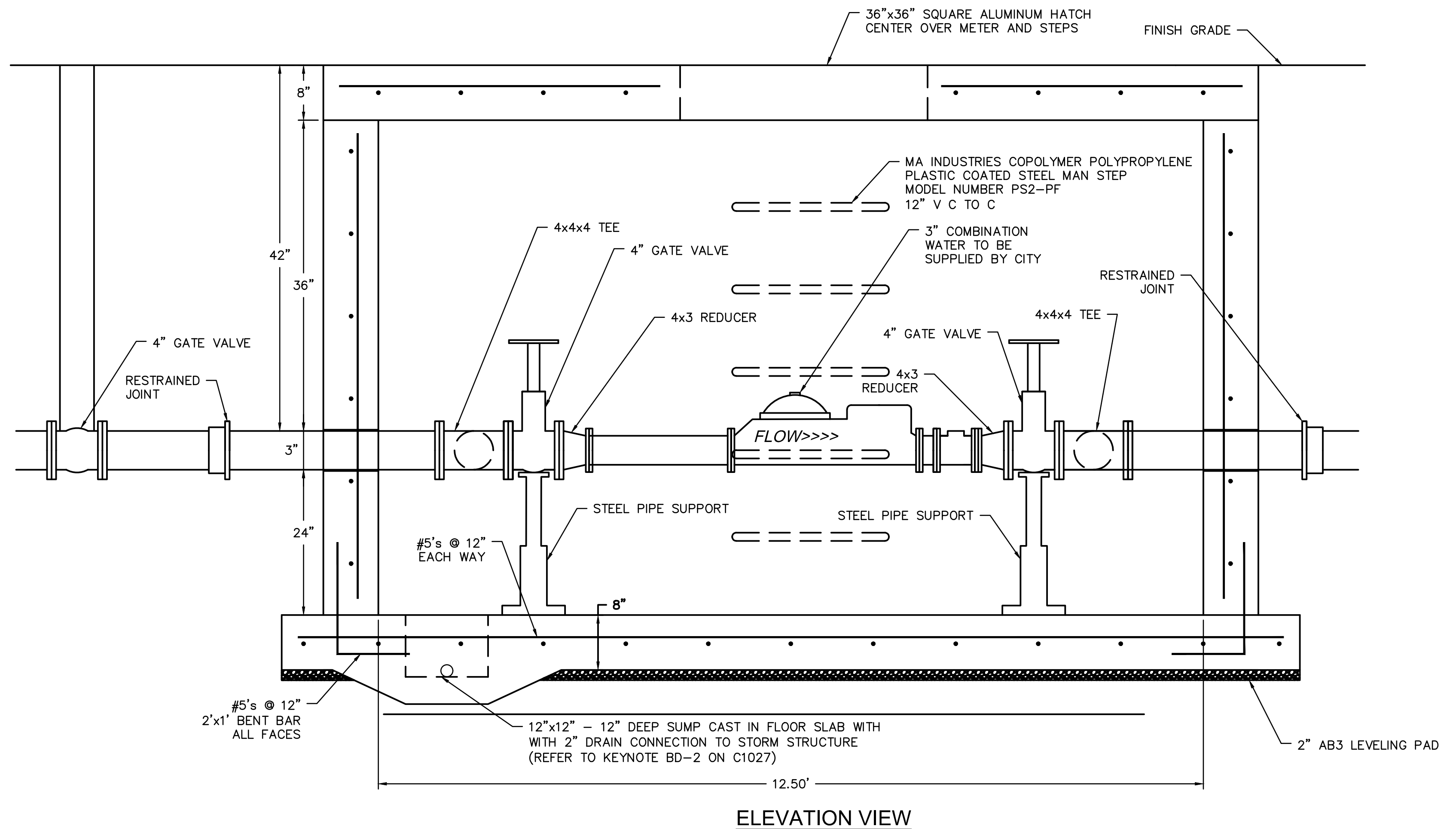
C1050



PLAN VIEW



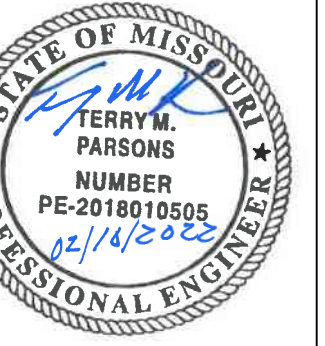
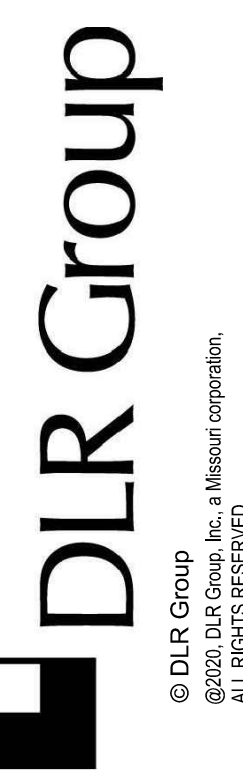
TOP REINFORCEMENT



ELEVATION VIEW

WATER METER VAULT DETAIL
NOT TO SCALE

- METER VAULT NOTES**
1. POUR FOOTING ON FIRM UNDISTURBED EARTH
 2. ALL PIPING IN METER PIT SHALL BE DUCTILE IRON PIPE.
 3. WALLS TO BE DOUBLE FORMED
 4. ALL REBAR TO 3/4" COVER
 5. HATCH TO BE CENTERED DIRECTLY ABOVE METER



Olsson
OLSSON, CIVIL ENGINEERING
INC. CERTIFICATE OF AUTHORITY #001592
7301 West 133rd Street, Suite 200
Overland Park, KS 66223-7750
TEL: 913.381.1170 www.olsosm.com

LEE'S SUMMIT MIDDLE SCHOOL #4
LEE'S SUMMIT R-7 SCHOOL DISTRICT
1001 SE BAILEY ROAD
LEE'S SUMMIT, MO 64881

PACKAGE 2-
STRUCTURAL & SITE
UTILITIES
ISSUED FOR PERMIT
08/28/20

PR002R 01.14.21
CPR 1 12.16.21
ASI-40 02.10.22

13-20102-00

STANDARD
DETAILS

C1050A

DWG: F:\2020\0001-0500\020-0103\40-Design\AutoCAD\Final Plans\CONSTRUCTION DOCUMENTS\C_DRAWING_0200103.dwg
DATE: Feb 11, 2022 2:30pm
USER: lparsons
C:\PSURF_80330 C:\PSURF_61023
C:\PSURF_80330 C:\PSURF_61023