





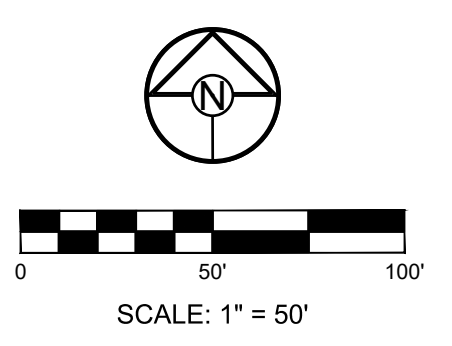
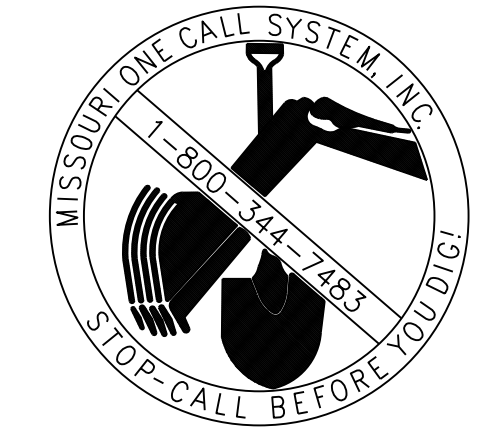
**MISSOURI GEOGRAPHIC REFERENCE SYSTEM BENCHMARK:**

BM JA-45, IS A KC METRO ALUMINUM GRS DISK SET IN CONCRETE AND ABOUT 3 INCHES BELOW THE PAVEMENT ON THE SHOULDER OF SE RANSON ROAD. IT IS STAMPED JA45, 1987.

ELEV. = 1046.25

**GENERAL NOTES:**

1. ALL WYES ARE STATIONED USING MAIN LINE STATIONS.
2. M.S.F.E DENOTES MINIMUM SEWERABLE FLOOR ELEVATION.
3. THE CONTRACTOR IS RESPONSIBLE FOR VERIFYING ALL EXISTING UTILITY LOCATIONS PRIOR TO EXCAVATIONS.
4. ALL SERVICE LINES ARE TO BE 90° TO THE MAIN UNLESS OTHERWISE NOTED.
5. ALL SANITARY SEWER MANHOLES ARE 4' DIAMETER UNLESS OTHERWISE NOTED.



**SCHLAGEL**  
 ENGINEERS PLANNERS SURVEYORS LANDSCAPE ARCHITECTS  
 14920 West 107th Street • Lenexa, Kansas 66215  
 (913) 492-5158 • Fax: (913) 492-8400  
 WWW.SCHLAGELASSOCIATES.COM  
 Missouri State Certificates of Authority  
 #E2002003690F #LAC200100237 #LS200200869F

PREPARED BY:



SCHLAGEL & ASSOCIATES, P.A.

**CORNERSTONE AT BAILEY FARMS, FIRST PLAT  
 SANITARY MAIN EXTENSION PLANS  
 1300 SE RANSON ROAD LEE'S SUMMIT, MO**

REVISION DATE	DESCRIPTION
01/26/2022	PER CITY COMMENTS

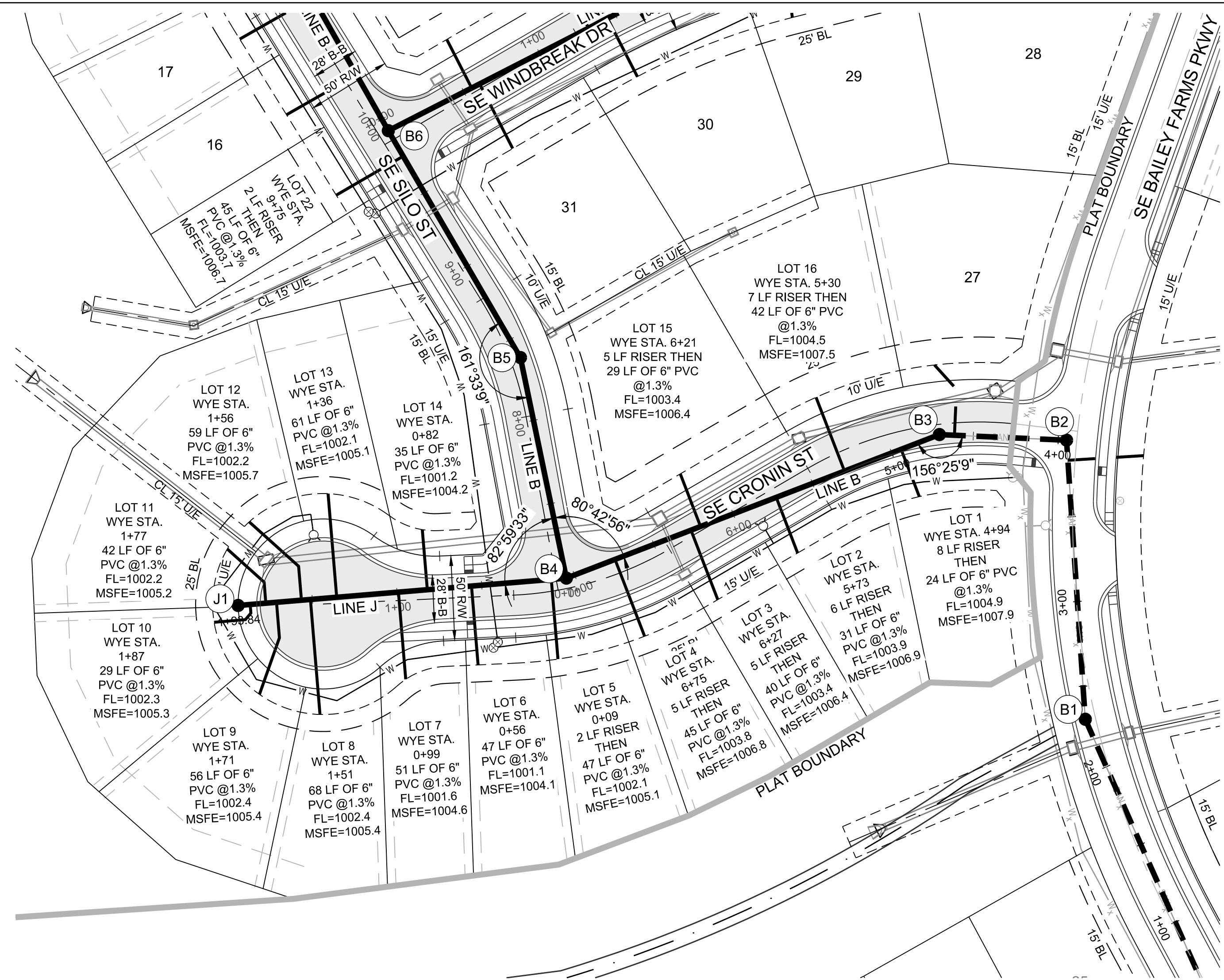
DRAWN BY: JRJ	CHECKED BY: JLL	DATE PREPARED: 1/22/2021	PROJ. NUMBER: 21-136
---------------	-----------------	--------------------------	----------------------

GENERAL LAYOUT

SHEET

**2**

I:\PROJECTS\2021\21-136\3.0 design\3.0 DWG Plans\7.0 San\21-136\_SAN\_GEN.dwg, 2/11/2022 6:50:38 AM, 1:1

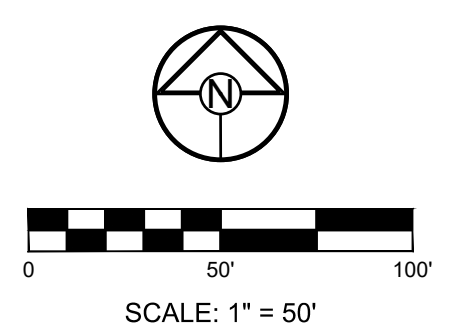
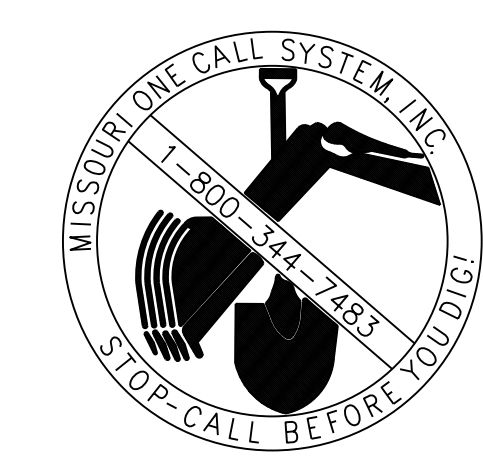


**MISSOURI GEOGRAPHIC REFERENCE SYSTEM BENCHMARK:**

BM JA-45, IS A KC METRO ALUMINUM GRS DISK SET IN CONCRETE AND ABOUT 3 INCHES BELOW THE PAVEMENT ON THE SHOULDER OF SE RANSON ROAD. IT IS STAMPED JA45, 1987.  
ELEV. = 1046.25

**GENERAL NOTES:**

- ALL WYES ARE STATIONED USING MAIN LINE STATIONS.
- M.S.F.E DENOTES MINIMUM SEWERABLE FLOOR ELEVATION.
- THE CONTRACTOR IS RESPONSIBLE FOR VERIFYING ALL EXISTING UTILITY LOCATIONS PRIOR TO EXCAVATIONS.
- ALL SERVICE LINES ARE TO BE 90° TO THE MAIN UNLESS OTHERWISE NOTED.
- ALL SANITARY SEWER MANHOLES ARE 4' DIAMETER UNLESS OTHERWISE NOTED.

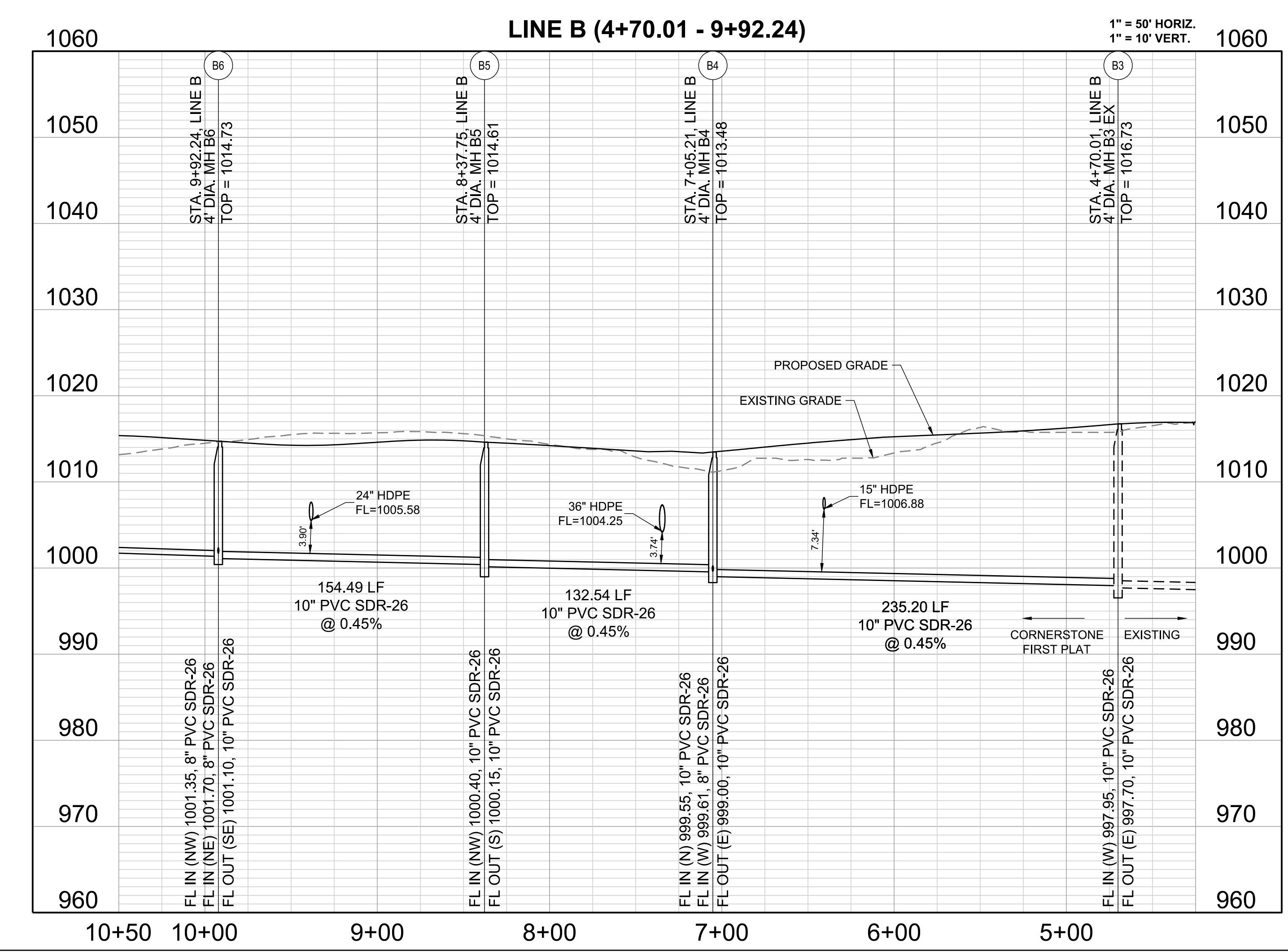
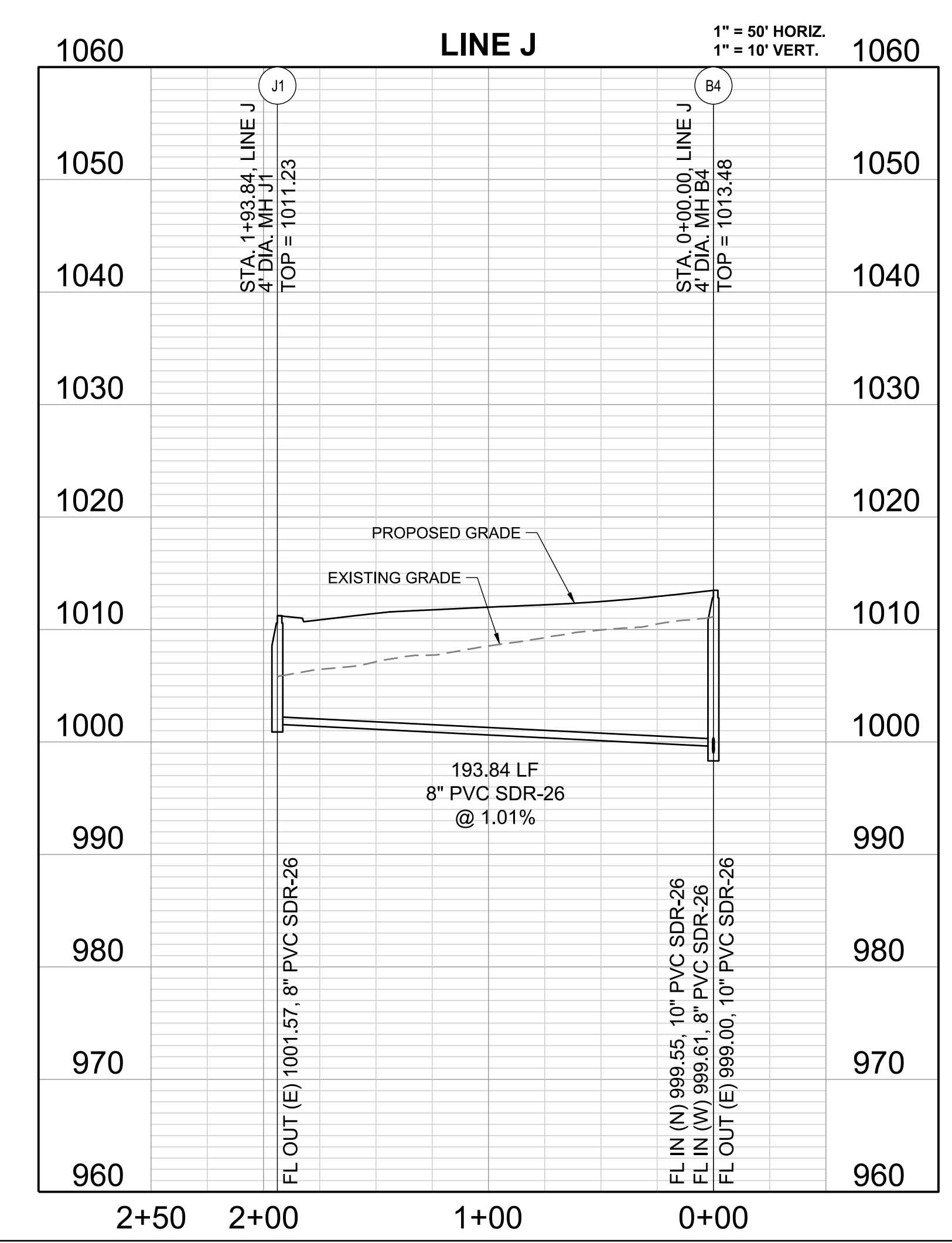


**SCHLAGEL**  
ENGINEERS PLANNERS SURVEYORS LANDSCAPE ARCHITECTS  
14920 West 107th Street • Lenexa, Kansas 66215  
(913) 492-5158 • Fax: (913) 492-8400  
WWW.SCHLAGELASSOCIATES.COM  
Missouri State Certificates of Authority  
#E200203690-F #LAC201005237 #LS200200869-F

PREPARED BY:  
JAMES L. LONG  
PROFESSIONAL ENGINEER  
NUMBER PE-2014010495  
2/11/2022  
SCHLAGEL & ASSOCIATES, P.A.

CORNERSTONE AT BAILEY FARMS, FIRST PLAT  
SANITARY MAIN EXTENSION PLANS  
1300 SE RANSON ROAD LEE'S SUMMIT, MO

I:\PROJECTS\2021\21-1803.0 design\3.0 DWG Plans\7.0 San\21-138 SAN-PP.dwg, 2/11/2022 6:51:59 AM, 11



REVISION DATE	DESCRIPTION
01/26/2022	PER CITY COMMENTS

DRAWN BY: JRJ	CHECKED BY: JLL
DATE PREPARED: 1/22/2021	PROJ. NUMBER: 21-138

LINES B AND J  
PLAN AND  
PROFILE

SHEET  
**3**

**MISSOURI GEOGRAPHIC REFERENCE SYSTEM BENCHMARK:**

BM JA-45, IS A KC METRO ALUMINUM GRS DISK SET IN CONCRETE AND ABOUT 3 INCHES BELOW THE PAVEMENT ON THE SHOULDER OF SE RANSON ROAD. IT IS STAMPED JA45, 1987.

ELEV. = 1046.25

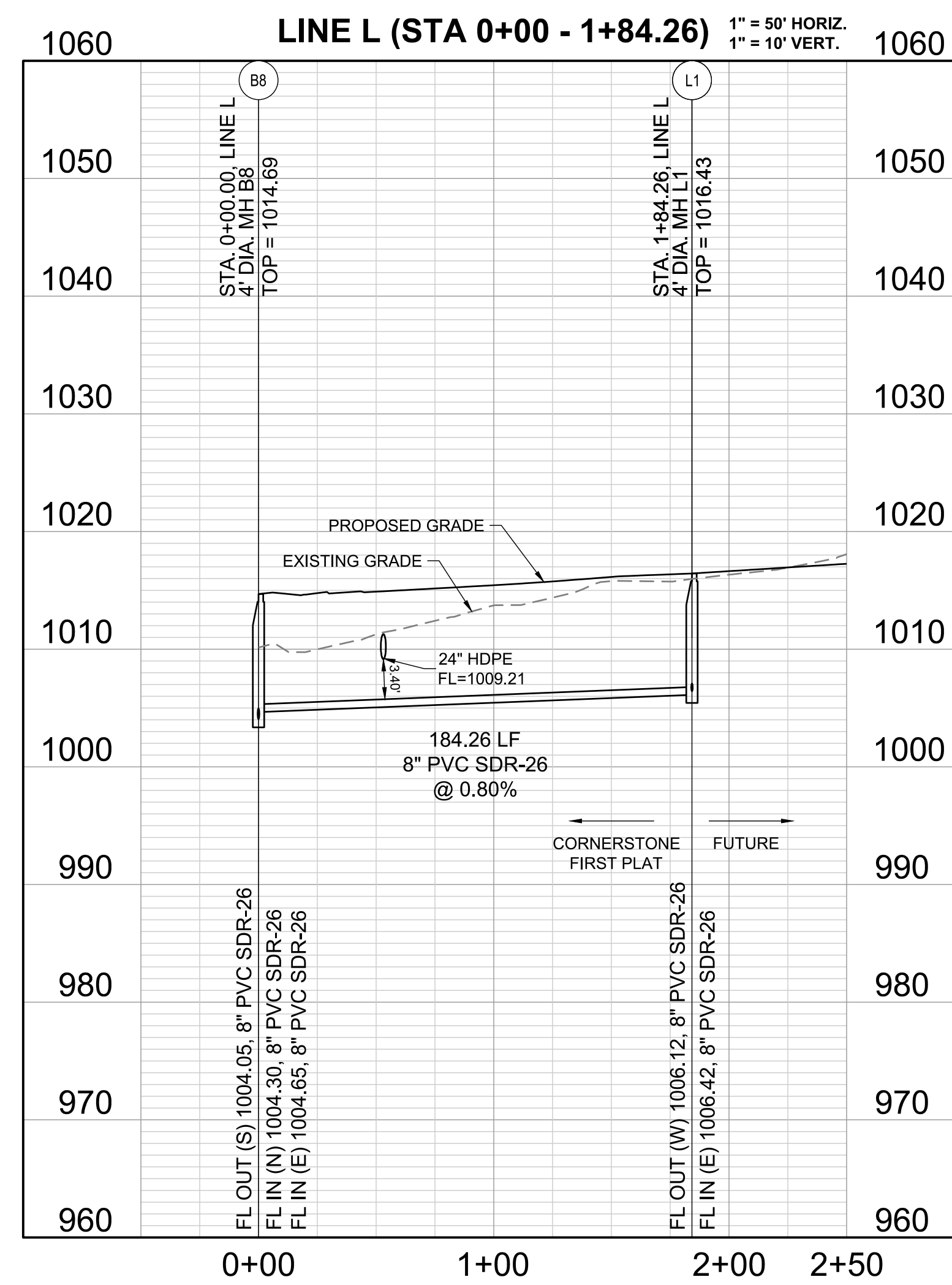
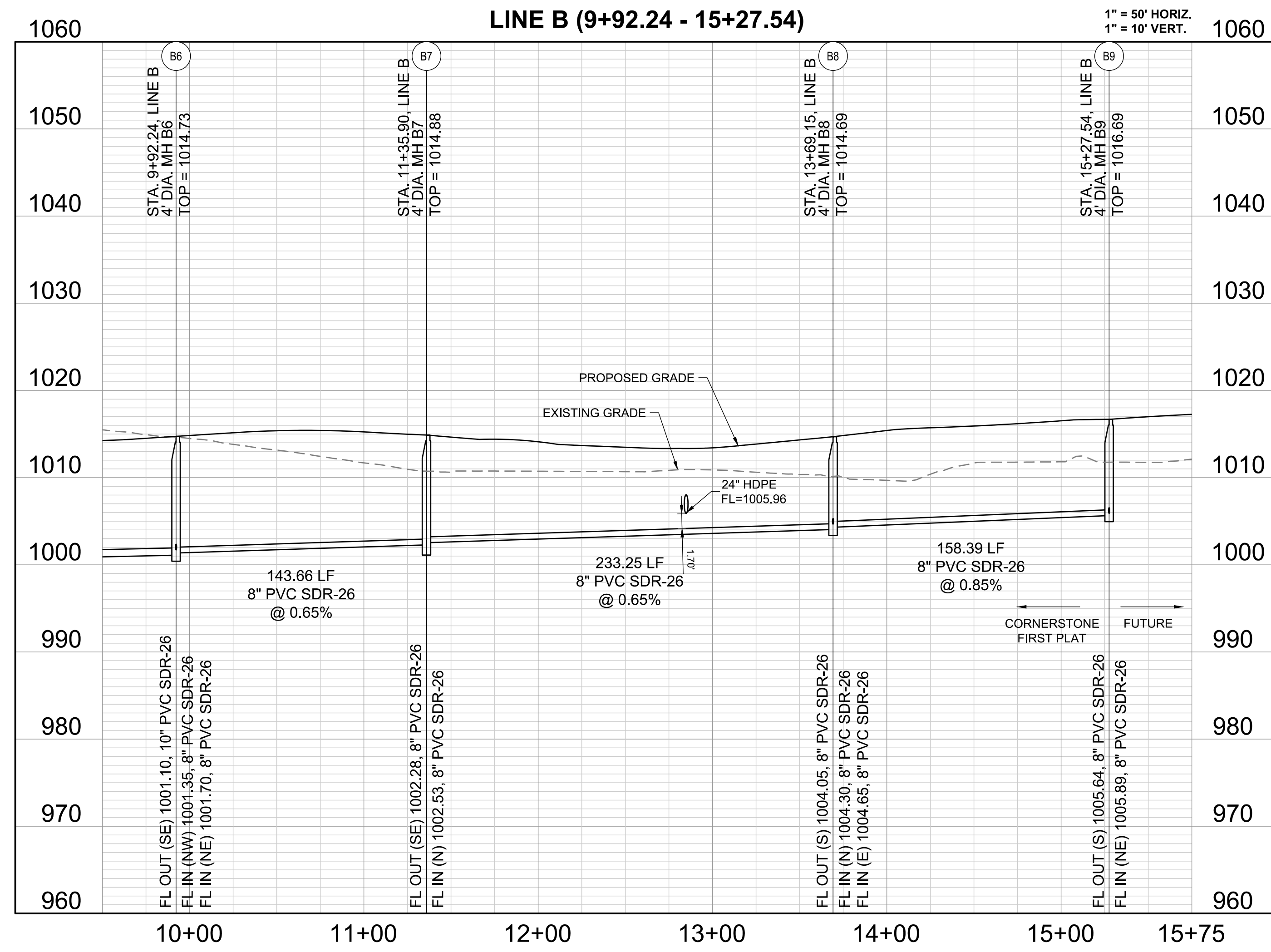
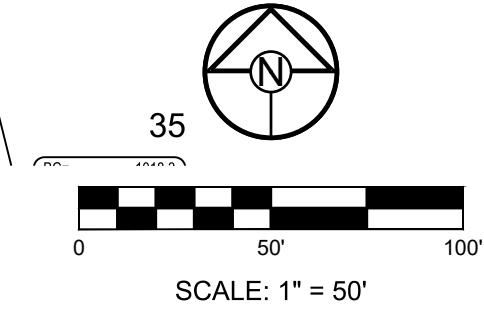
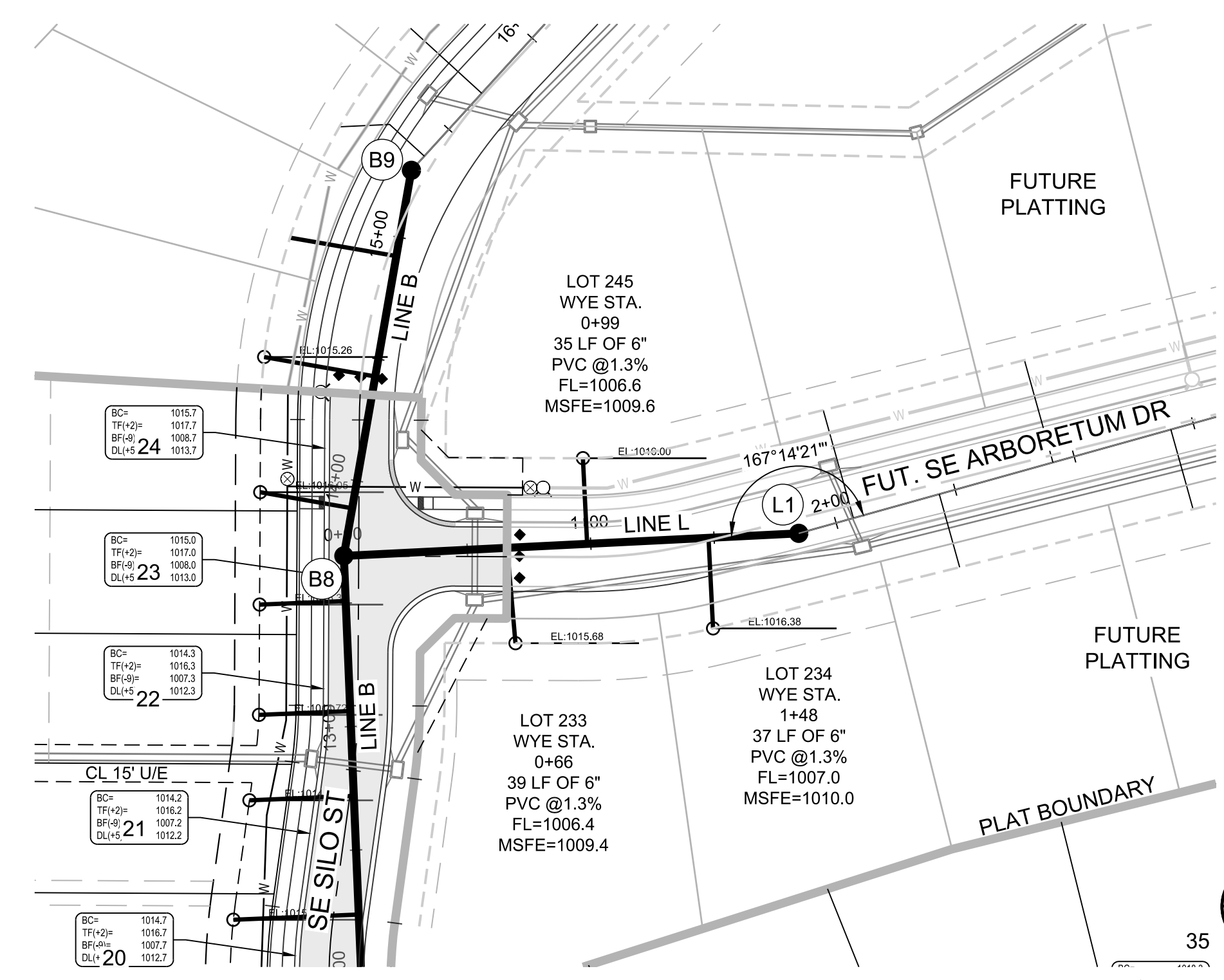
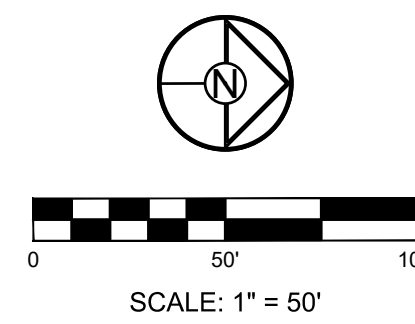
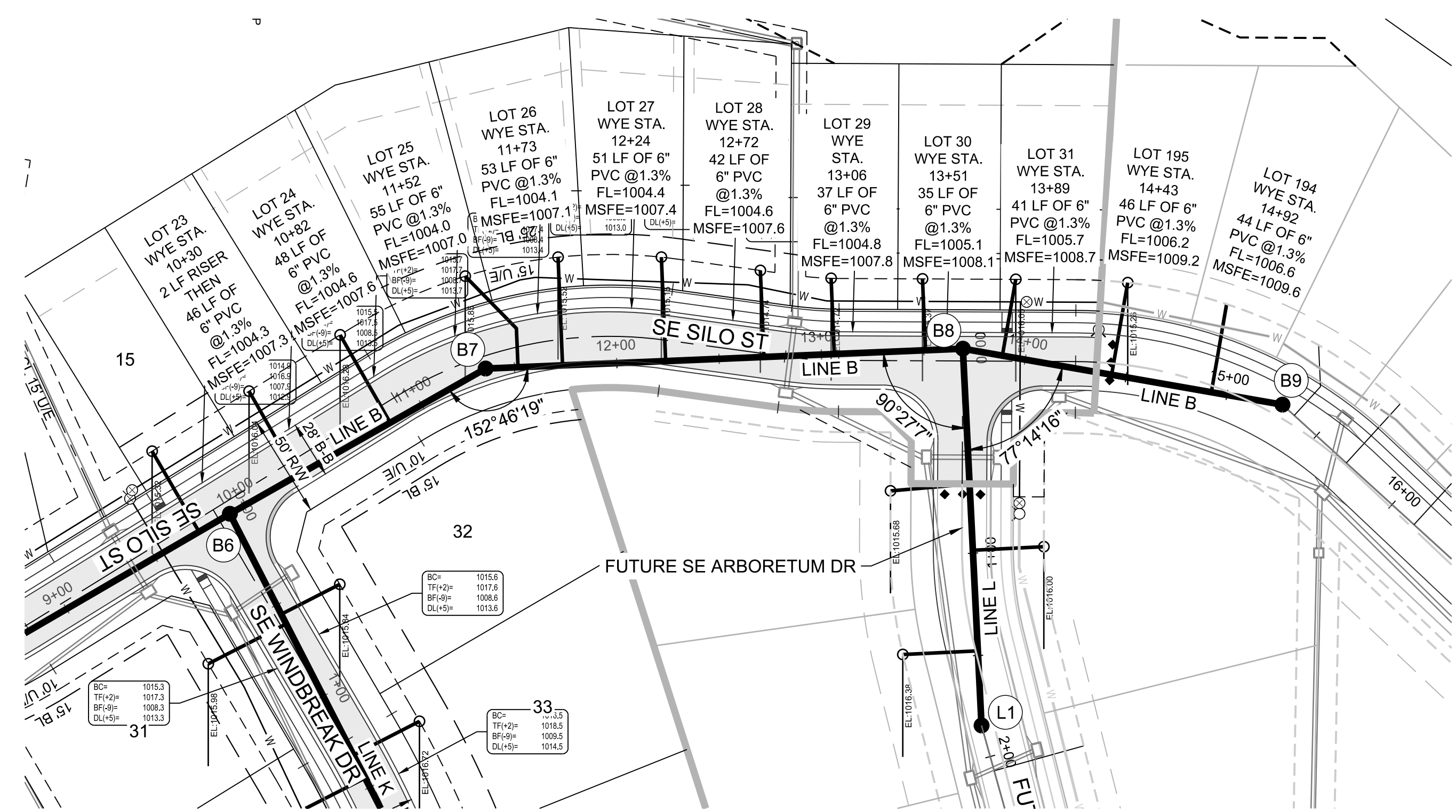
**GENERAL NOTES:**

1. ALL LINES ARE STATIONED USING MAIN LINE STATIONS.
2. M.S.F.E DENOTES MINIMUM SEWERABLE FLOOR ELEVATION.
3. THE CONTRACTOR IS RESPONSIBLE FOR VERIFYING ALL EXISTING UTILITY LOCATIONS PRIOR TO EXCAVATIONS.
4. ALL SERVICE LINES ARE TO BE 90° TO THE MAIN UNLESS OTHERWISE NOTED.
5. ALL SANITARY SEWER MANHOLES ARE 4' DIAMETER UNLESS OTHERWISE NOTED.

PREPARED BY:



2/11/2022  
SCHLAGEL & ASSOCIATES, P.A.



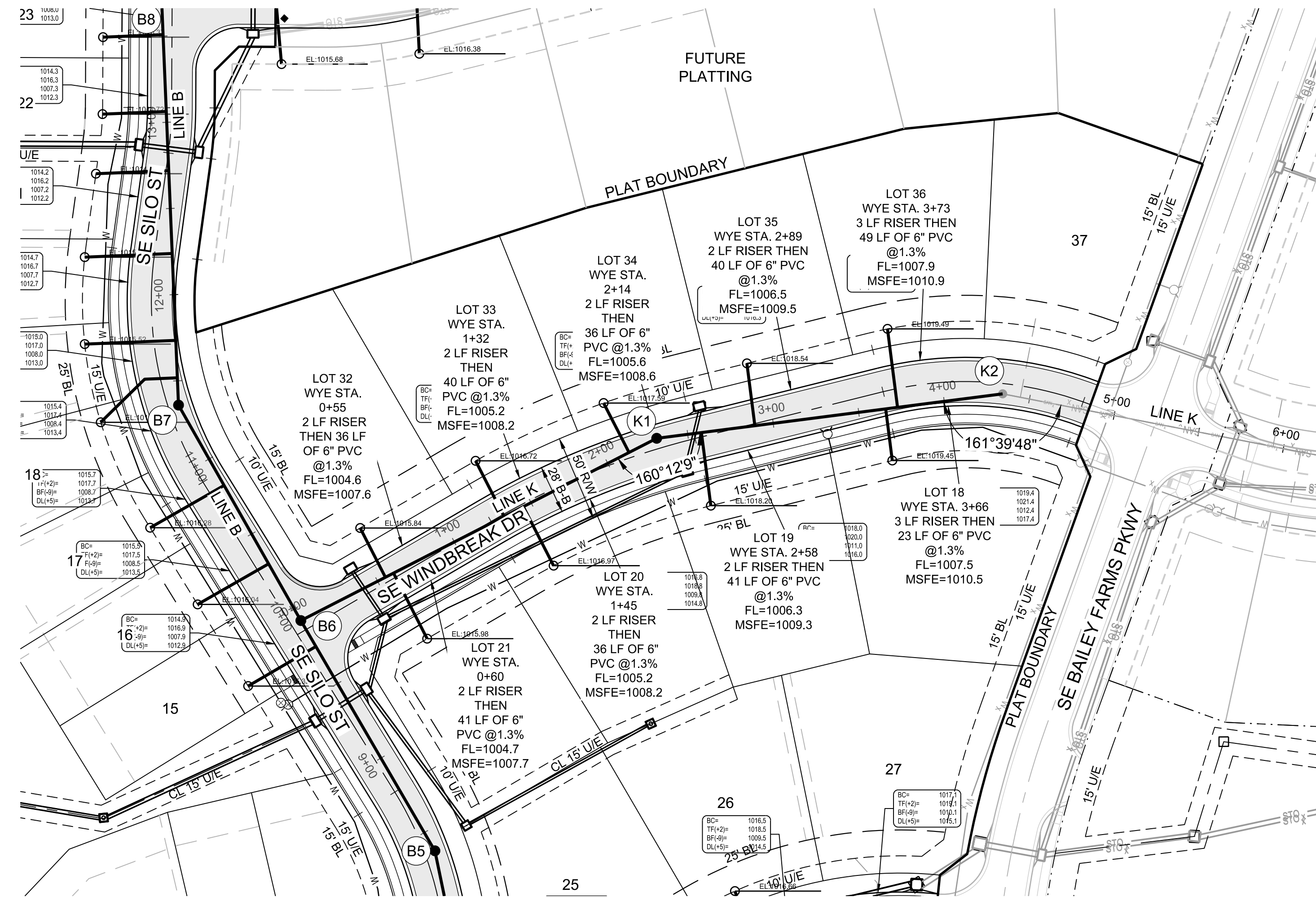
CORNERSTONE AT BAILEY FARMS, FIRST PLAT  
SANITARY MAIN EXTENSION PLANS  
1300 SE RANSON ROAD LEE'S SUMMIT, MO

REVISION DATE	DESCRIPTION
01/26/2022	PER CITY COMMENTS

DRAWN BY: JRJ	CHECKED BY: JLL	DATE PREPARED: 1/22/2021	PROJ. NUMBER: 21-136
---------------	-----------------	--------------------------	----------------------

LINES B AND L  
PLAN AND  
PROFILE

I:\PROJECTS\2021\21-136\3.0 design\3.0 DWG Plans\7.0 San\21-136 SAN-PP.dwg, 2/11/2022 6:52:10 AM, 1:1



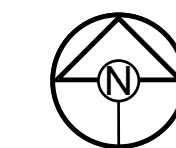
**MISSOURI GEOGRAPHIC REFERENCE SYSTEM BENCHMARK:**

BM JA-45, IS A KC METRO ALUMINUM GRS DISK SET IN CONCRETE AND ABOUT 3 INCHES BELOW THE PAVEMENT ON THE SHOULDER OF SE RANSON ROAD. IT IS STAMPED JA45, 1987.

ELEV. = 1046.25

**GENERAL NOTES:**

1. ALL WYES ARE STATIONED USING MAIN LINE STATIONS.
2. M.S.F.E DENOTES MINIMUM SEWERABLE FLOOR ELEVATION.
3. THE CONTRACTOR IS RESPONSIBLE FOR VERIFYING ALL EXISTING UTILITY LOCATIONS PRIOR TO EXCAVATIONS.
4. ALL SERVICE LINES ARE TO BE 90° TO THE MAIN UNLESS OTHERWISE NOTED.
5. ALL SANITARY SEWER MANHOLES ARE 4' DIAMETER UNLESS OTHERWISE NOTED.



SCALE: 1" = 50'

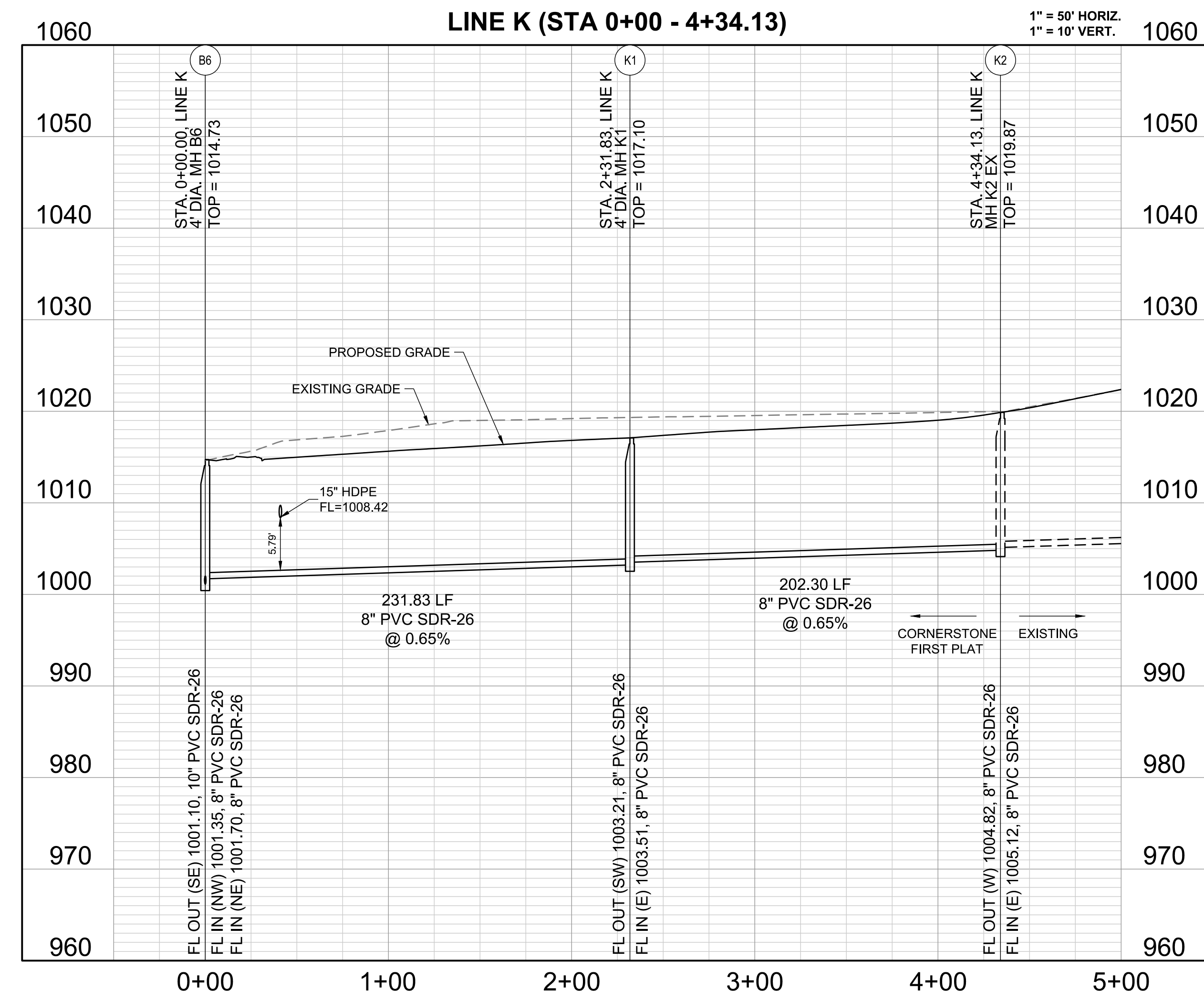
**SCHLAGEL**  
**ENGINEERS PLANNERS SURVEYORS LANDSCAPE ARCHITECTS**  
 14920 West 107th Street • Lenexa, Kansas 66215  
 (913) 492-5158 • Fax: (913) 492-8400  
 WWW.SCHLAGELASSOCIATES.COM  
 Missouri State Certificates of Authority  
 #E200200360P# #LAC200100237# #LS200200869F

PREPARED BY:



2/11/2022  
 SCHLAGEL & ASSOCIATES, P.A.

**CORNERSTONE AT BAILEY FARMS, FIRST PLAT  
 SANITARY MAIN EXTENSION PLANS  
 1300 SE RANSON ROAD LEE'S SUMMIT, MO**



REVISION DATE	DESCRIPTION
01/26/2022	PER CITY COMMENTS

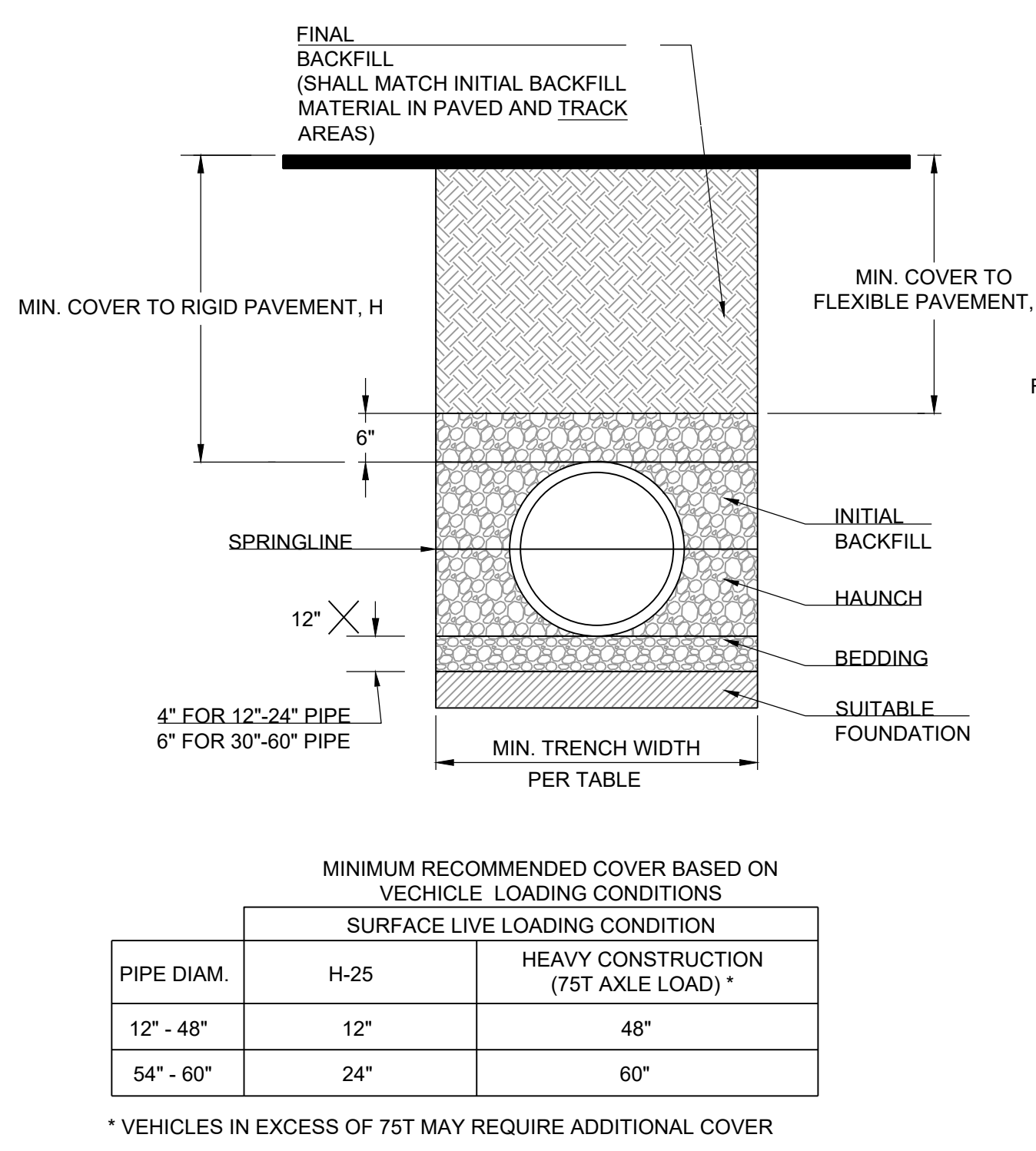
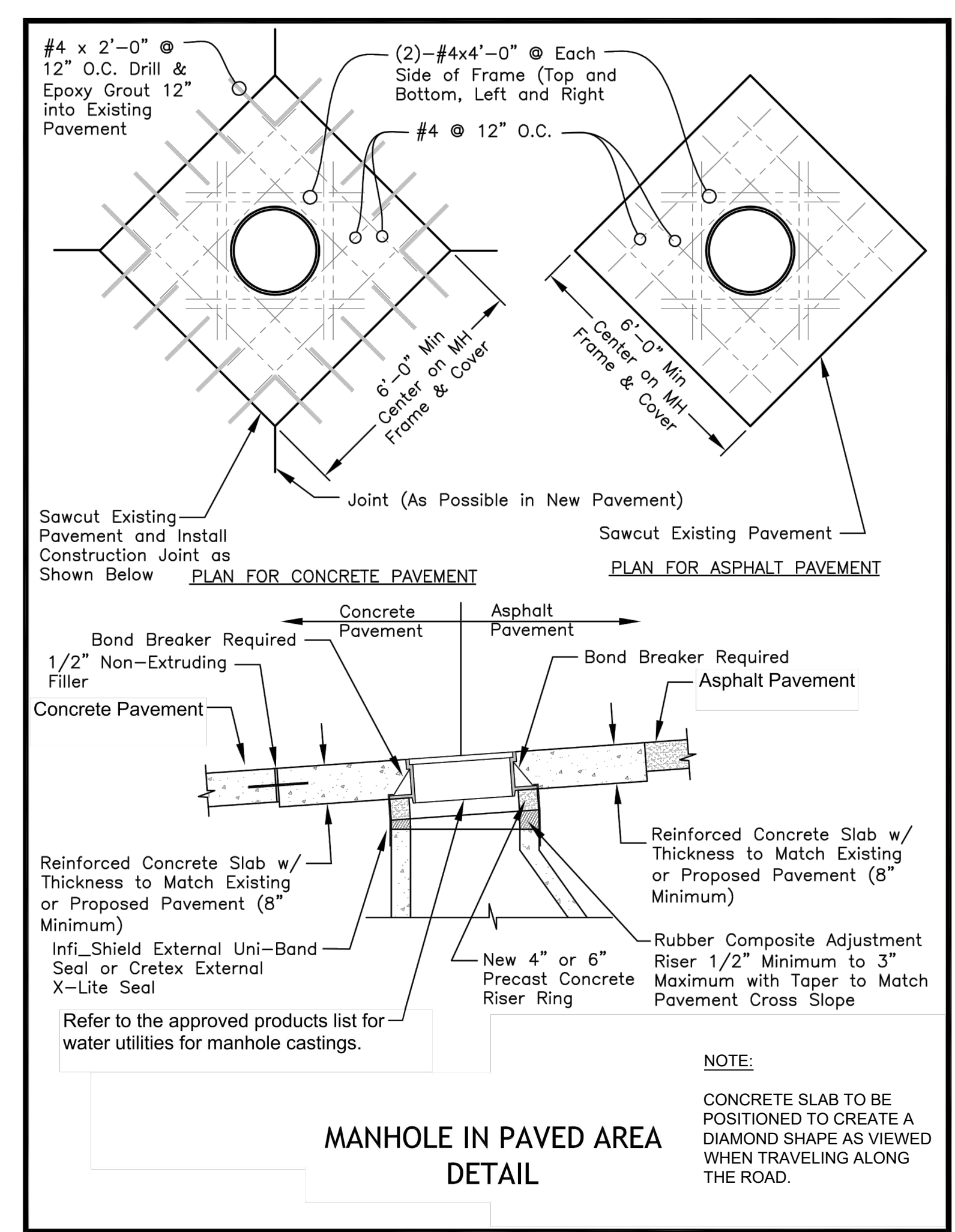
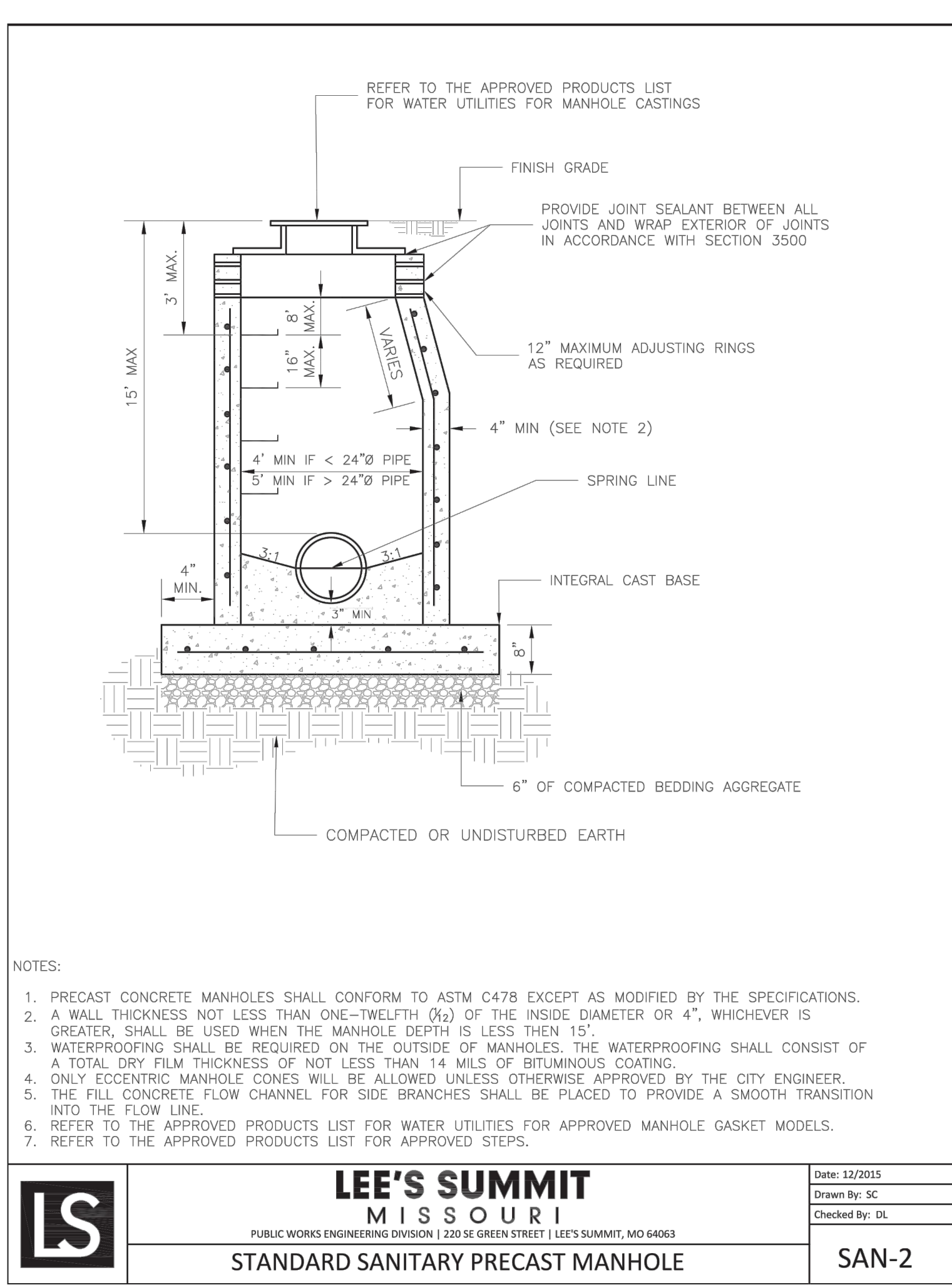
  

DRAWN BY: JRJ	CHECKED BY: JLL	DATE PREPARED: 1/22/2021	PROJ. NUMBER: 21-136
---------------	-----------------	--------------------------	----------------------

LINE K (STA 0+00 - 4+34.13) PLAN AND PROFILE

SHEET

I:\PROJECTS\2021\21-136\3.0 design\3.0 DWG Plans\7.0 San\21-136 SAN-PP.dwg, 2/11/2022 6:52:19 AM, 1/1



- NOTES:  
 1. ALL PIPE SYSTEMS SHALL BE INSTALLED IN ACCORDANCE WITH ASTM D2321, "STANDARD PRACTICE FOR UNDERGROUND INSTALLATION OF THERMOPLASTIC PIPE FOR SEWERS AND OTHER GRAVITY FLOW APPLICATIONS", LATEST EDITION  
 2. MEASURES SHOULD BE TAKEN TO PREVENT MIGRATION OF NATIVE FINES INTO BACKFILL MATERIAL, WHEN REQUIRED.  
 3. FOUNDATION: WHERE THE TRENCH BOTTOM IS UNSTABLE, THE CONTRACTOR SHALL EXCAVATE TO A DEPTH REQUIRED BY THE ENGINEER AND REPLACE WITH SUITABLE MATERIAL AS SPECIFIED BY THE ENGINEER, AS AN ALTERNATIVE AND AT THE DISCRETION OF THE DESIGN ENGINEER, THE TRENCH BOTTOM MAY BE STABILIZED USING A GEOTEXTILE MATERIAL.  
 4. BEDDING: SUITABLE MATERIAL SHALL BE CLASS I, II OR III. THE CONTRACTOR SHALL PROVIDE DOCUMENTATION FOR MATERIAL SPECIFICATION TO ENGINEER. UNLESS OTHERWISE NOTED BY THE ENGINEER, MINIMUM BEDDING THICKNESS SHALL BE 4" (100mm) FOR 4"-24" (100mm-600mm); 6" (150mm) FOR 30"-60" (750mm-900mm).  
 5. INITIAL BACKFILL: SUITABLE MATERIAL SHALL BE CLASS I, II OR III IN THE PIPE ZONE EXTENDING NOT LESS THAN 6" ABOVE CROWN OF PIPE. THE CONTRACTOR SHALL PROVIDE DOCUMENTATION FOR MATERIAL SPECIFICATION TO ENGINEER. MATERIAL SHALL BE INSTALLED AS REQUIRED IN ASTM D2321, LATEST EDITION.  
 6. MINIMUM COVER: MINIMUM COVER, H, IN NON-TRAFFIC APPLICATIONS (GRASS OR LANDSCAPE AREAS) IS 12" FROM THE TOP OF PIPE TO GROUND SURFACE. ADDITIONAL COVER MAY BE REQUIRED TO PREVENT FLOATION. FOR TRAFFIC APPLICATIONS, MINIMUM COVER, H, IS 12" UP TO 48" DIAMETER PIPE AND 24" OF COVER FOR 54"-60" DIAMETER PIPE, MEASURED FROM TOP OF PIPE TO BOTTOM OF FLEXIBLE PAVEMENT OR TO TOP OF RIGID PAVEMENT.

