

PRELIMINARY EXTERIOR MATERIALS PALETTE:

- A.

Aluminum Composite Metal Wall Panel
Manufacturer: Alpolic
Color/Finish: Red to Match K1 Speed Standards
- B.

Precast Concrete Wall Panel (Textured):
Manufacturer: Enterprise Precast or Equal
Color/Finish: High Performance Coating in 3 Shades of Gray
- C.

Precast Concrete Wall Panel (Smooth)
Manufacturer: Enterprise Precast or Equal
Color/Finish: Smooth Coating to Match K1 Speed Standards
- D.

Pre-Finished Metal Wall Panel System
Manufacturer: Centria Concept Series
Vertical Installation of Panel Types CS210, CS220 and CS260.
Color/Finish: 9960 XL Medium Gray
- E.

Aluminum Storefront System:
Manufacturer: Kawneer Versaglaze 451-T
Color/Finish: Clear Anodized / Red
- F.

Clear Insulated Low E Glazing
Manufacturer: AGC Energy Select
- G.

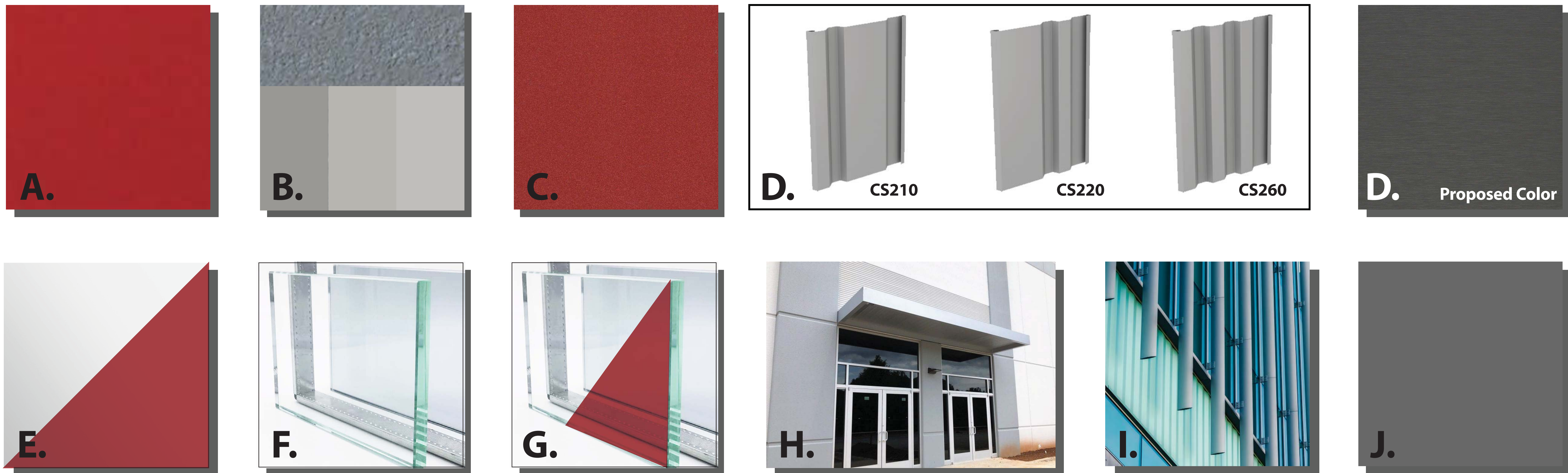
Translucent Insulated Low E Glazing with Laminated Translucent Interior Light
Manufacturer: AGC Eergy Select 40 with Butacite Interlayer Shades of Red
- H.

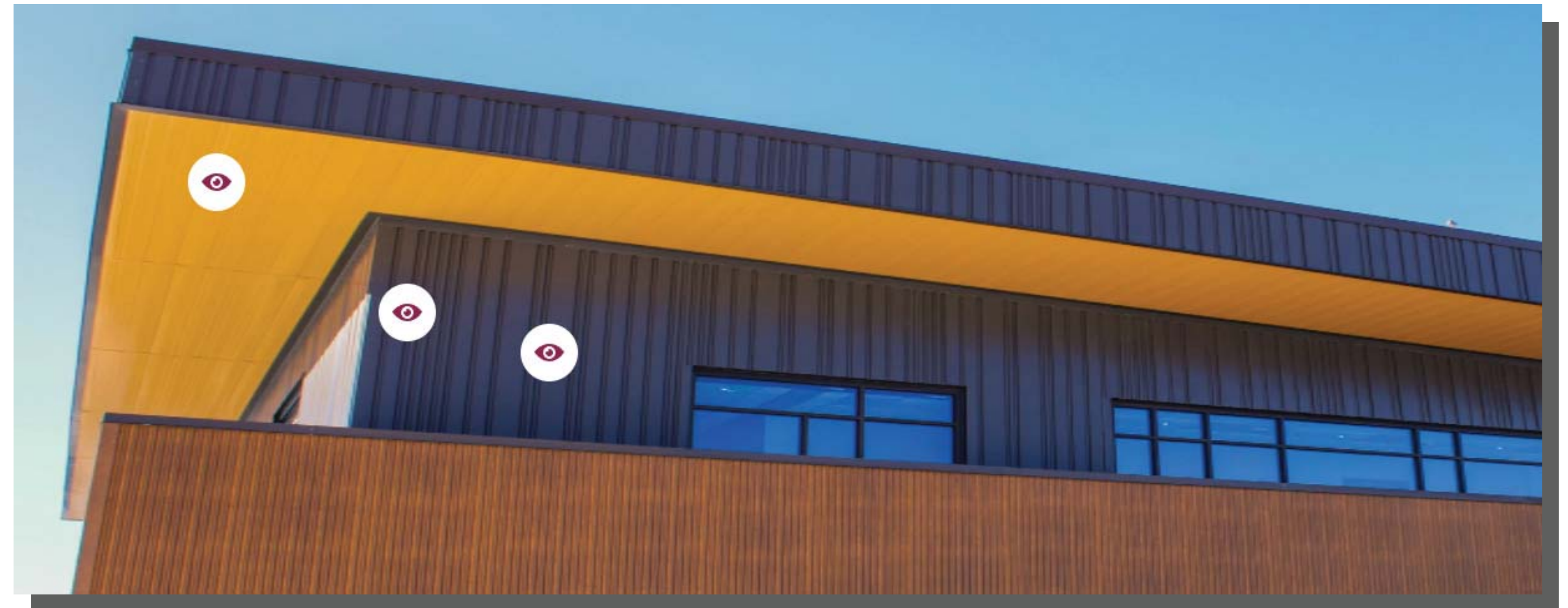
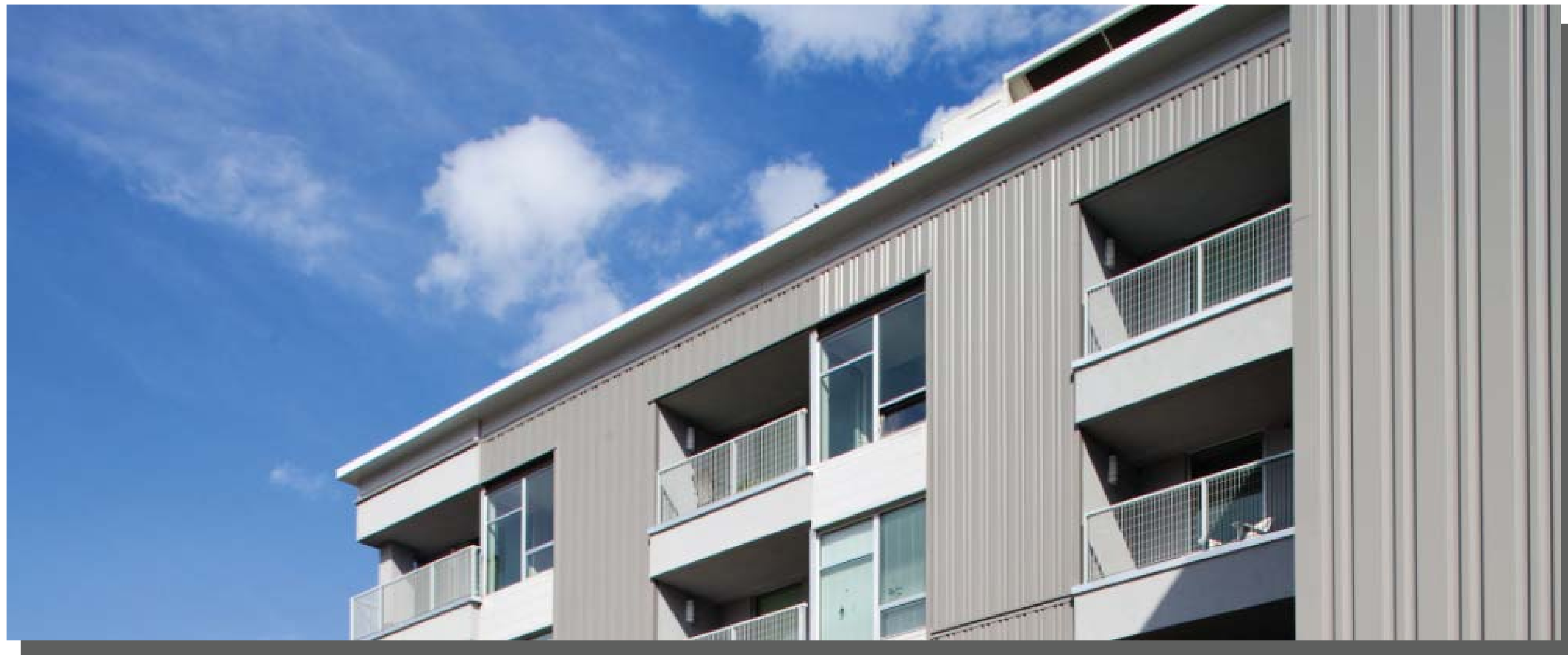
Pre-Finished Metal Canopy System
Manufacturer: Custom - TBD.
Color/Finish: White/Red to Match K1 Speed Standards
- I.

Pre-Finished Metal Vertical Sunshade System
Manufacturer: Custom - TBD.
Color/Finish: Red to Match K1 Speed Standards
- J.

Pre-Finished Metal Coping
Manufacturer: Berridge Manufacturing
Color/Finish: Lead Cote
- NOTE:

All Materials Subject to Approved Equal or Substitutions as Development Progresses.

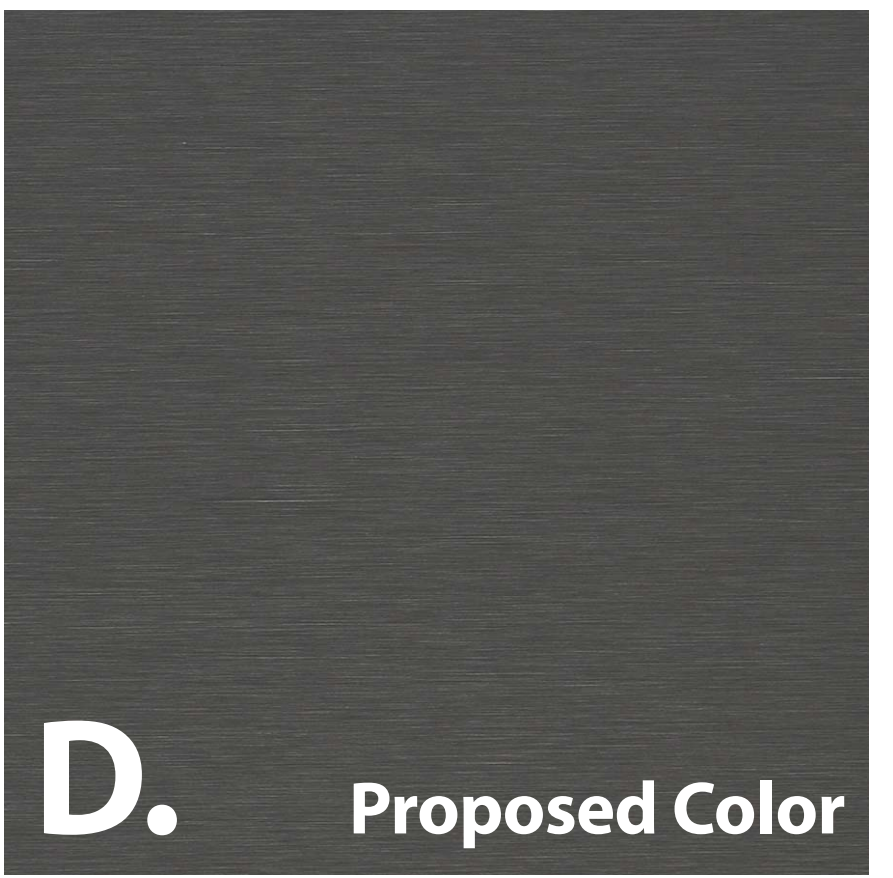
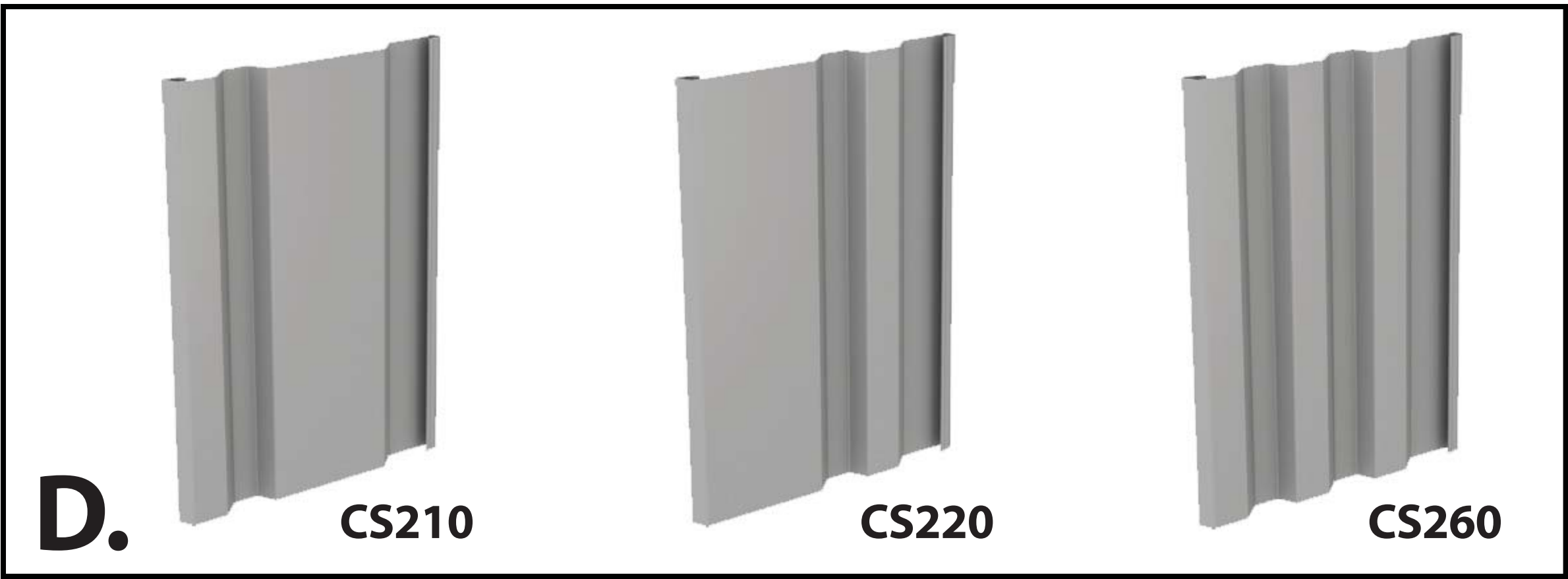




Centria Concept Series Metal Panel - Precedent Images

**EXTERIOR MATERIAL FOR
CITY REVIEW/APPROVAL:**

D. Pre-Finished Metal Wall Panel System
Manufacturer: Centria Concept Series
Vertical Installation of Panel Types CS210,
CS220 and CS260.
Color/Finish: 9960 XL Medium Gray



K1 Speed - Pre-Finished Metal Wall Panel System

Lee's Summit, MO

SAI# 211107 02.10.2022