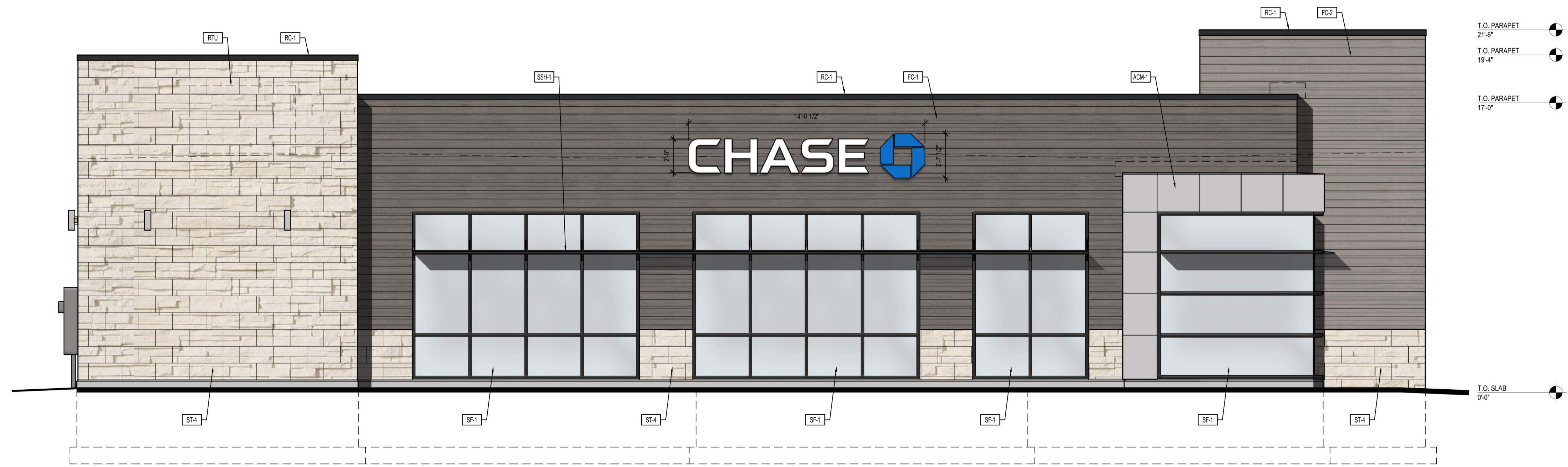


**EXTERIOR FINISH MATERIALS**

<b>MANUFACTURED THIN STONE VENEER</b>	
MANUFACTURER	CORONADO STONE PRODUCTS
PRODUCT	CHISELED LIMESTONE
COLOR	CREAM
SIZE	24" WIDE x 12" HIGH x 1" THICK
GROUT	1/4" NOMINAL JOINTS WITH FULL SMOOTH TOOLED COLOR-MATCHED PORTLAND CEMENT GROUT
NOTES	RUNNING BOND MANUFACTURED THIN STONE FIELD-CUT TO MAX. LENGTHS POSSIBLE WITH BUTTED AND LAPPED INSIDE CORNERS AND MANUFACTURER'S FABRICATED RETURN CORNER PIECES- MITERED CORNERS ARE NOT ACCEPTABLE- PLACE CONTROL JOINTS AS RECOMMENDED BY THE MANUFACTURER- REFER TO WALL SECTIONS AND DETAILS
<b>FIBER CEMENT PANEL- DARK</b>	
MANUFACTURER	NICHIHA FIBER CEMENT
PRODUCT	VINTAGEWOOD AWP 1818 (AVAILABLE AS AWP 3030 FOR NON-PROTOTYPICAL PROJECTS)
COLOR	BARK
SIZE	18" NOMINAL x 72" NOMINAL AND 120" NOMINAL
NOTES	INCLUDE 3.5" MANUFACTURED CORNERS AND MANUFACTURER'S "ESSENTIAL" FLASHING SYSTEM.
<b>FIBER CEMENT PANEL- LIGHT</b>	
MANUFACTURER	NICHIHA FIBER CEMENT
PRODUCT	VINTAGEWOOD AWP 1818 (AVAILABLE AS AWP 3030 FOR NON-PROTOTYPICAL PROJECTS)
COLOR	ASH
SIZE	18" NOMINAL x 72" NOMINAL AND 120" NOMINAL
NOTES	INCLUDE 3.5" MANUFACTURED CORNERS AND MANUFACTURER'S "ESSENTIAL" FLASHING SYSTEM.
<b>ROOF COPING</b>	
MANUFACTURER	PETERSEN ALUMINUM / PAC-CLAD
PRODUCT	PAC-CONTINUOUS
COLOR	MATTE BLACK STEEL / BLACK ALUMINUM
<b>ALUMINUM COMPOSITE MATERIAL</b>	
MANUFACTURER	ARCONIC ARCHITECTURAL PRODUCTS
PRODUCT	REYNOBOND
COLOR	DURAGLOSS 5000 DG SILVER
<b>ALUMINUM STOREFRONT</b>	
MANUFACTURER	KAWNEER
PRODUCT	451T
COLOR	BLACK ANODIZED ALUMINUM
<b>SUNSHADE</b>	
MANUFACTURER	KAWNEER
PRODUCT	VERSOLEIL
COLOR	BLACK ANODIZED ALUMINUM
<b>CANOPY</b>	
MANUFACTURER	SHOP FABRICATED
PRODUCT	
COLOR	BLACK ANODIZED ALUMINUM
<b>EXTERIOR LIGHT FIXTURE</b>	
MANUFACTURER	LUMIERE
PRODUCT	LANTERRA 9004
COLOR	SILVER



**2 EAST ELEVATION**  
A2.1 1/4" = 1'-0"



**1 NORTH ELEVATION**  
A2.1 1/4" = 1'-0"

PREPARED BY:  
**EBI Consulting**  
 ENVIRO BUSINESS, INC.  
 21 B Street | Burlington, MA 01803  
 Tel: (781) 273-2500 | www.ebiconsulting.com

SIGNED BY:  
 DATE:  
 NAME:  
 LICENSE NUMBER:

**PRYOR RD & LOWENSTEIN DR**  
 900 NW PRYOR ROAD  
 LEE'S SUMMIT, MO 64081

EBI JOB #412100090

ISSUE	DATE	DESCRIPTION



**PRYOR & LOWENSTEIN**  
 PROTOTYPE VERSION 20.4

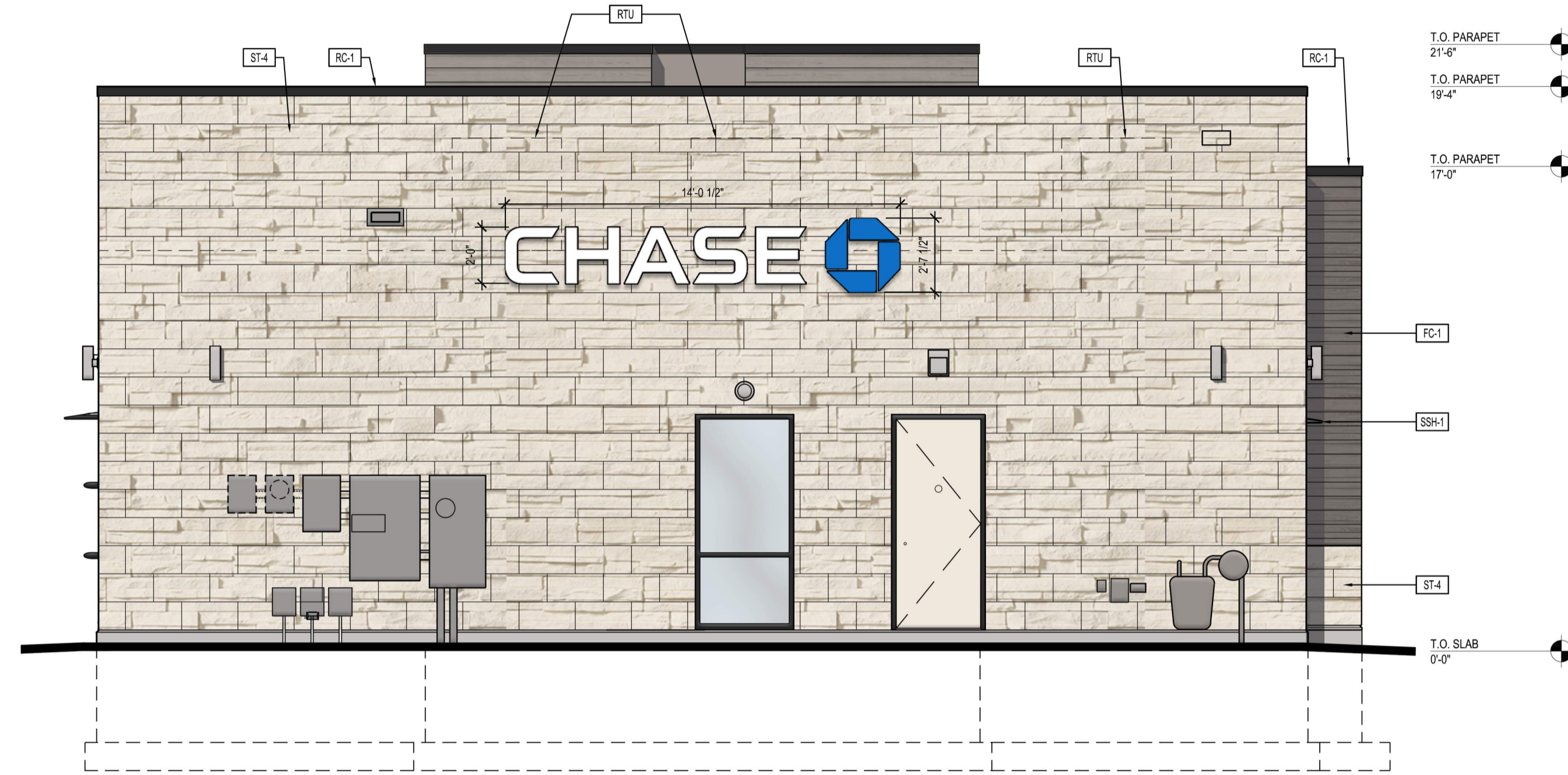
CONTENTS  
 EXTERIOR ELEVATIONS

11/16/2021  
 SHEET

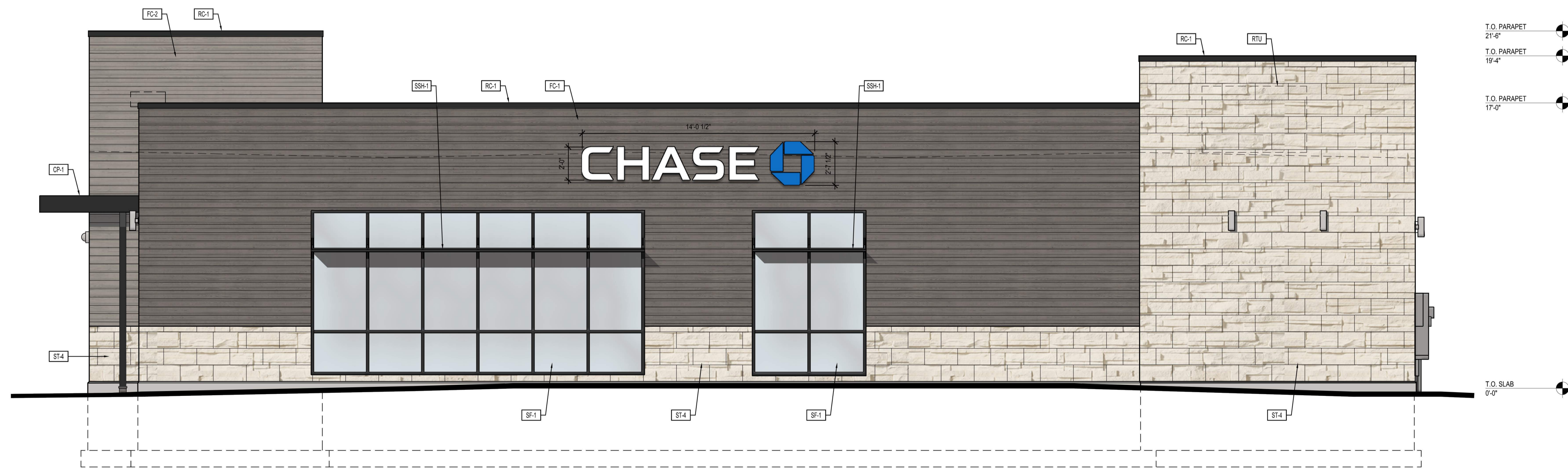
**A2.1**

REVISIONS AND SPECIFICATIONS ARE THE PROPERTY AND COPYRIGHT OF ENVIRONMENTAL BUSINESS, INC. THEY ARE FOR THE EXCLUSIVE USE OF THE CLIENT FOR THEIR USE AND FOR OCCUPANCY OF THE PROJECT. ANY REPRODUCTION OR USE WITHOUT THE EXPRESS WRITTEN CONSENT OF ENVIRONMENTAL BUSINESS, INC. IS STRICTLY PROHIBITED.





2 WEST ELEVATION  
A2.2 1/4" = 1'-0"



1 SOUTH ELEVATION  
A2.2 1/4" = 1'-0"

SIGNED BY:

DATE:  
NAME:  
LICENSE NUMBER:

PRYOR RD & LOWENSTEIN DR  
900 NW PRYOR ROAD  
LEE'S SUMMIT, MO 64081

EBI JOB #4121000090

ISSUE	DATE	DESCRIPTION



PRYOR & LOWENSTEIN  
PROTOTYPE VERSION 20.4

CONTENTS

EXTERIOR ELEVATIONS

11/16/2021

SHEET

A2.2