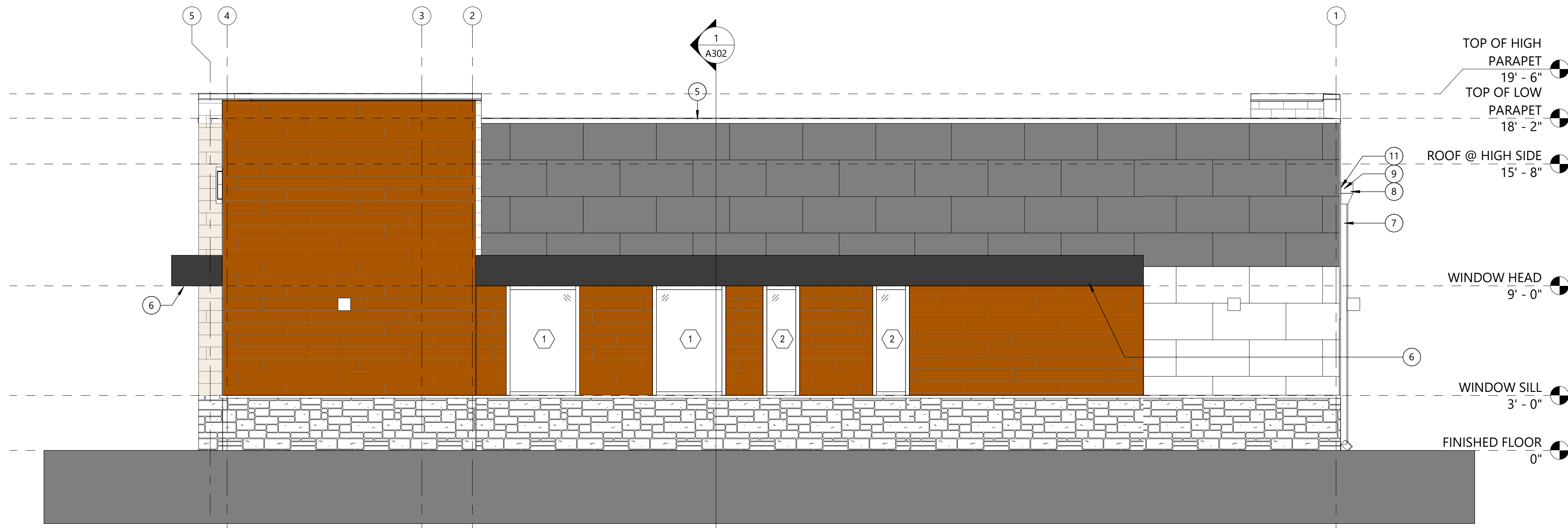
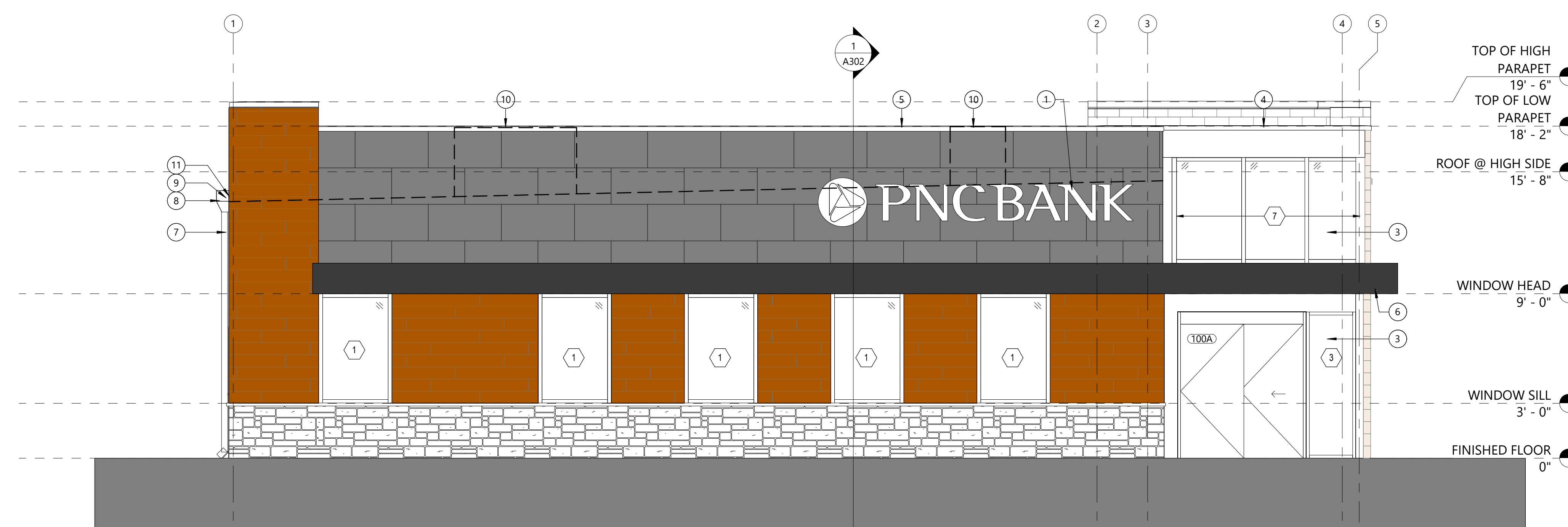


50% CONSTRUCTION
DOCUMENTS / DESIGN
DEVELOPMENT

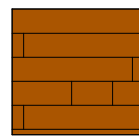
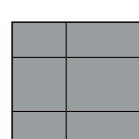
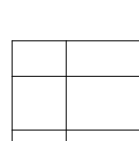
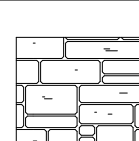



1
A202 NORTH ELEVATION
SCALE: 1/4" = 1'-0"



2
A202 SOUTH ELEVATION
SCALE: 1/4" = 1'-0"

EXTERIOR FINISH LEGEND

	FCP-1	FIBER CEMENT PANEL (REDWOOD): MATERIAL: FIBER CEMENT PANEL FINISH: INTEGRATED FINISH MANUFACTURER: NICHHA VINTAGEWOOD COLOR: REDWOOD
	FCP-2	FIBER CEMENT PANEL (GRAY): MATERIAL: FIBER CEMENT PANEL FINISH: INTEGRATED FINISH MANUFACTURER: NICHHA ILLUMINATION COLOR: FOG
	FCP-3	FIBER CEMENT PANEL (WHITE): MATERIAL: FIBER CEMENT PANEL FINISH: INTEGRATED FINISH MANUFACTURER: NICHHA ILLUMINATION COLOR: COTTON
	FCP-4	FIBER CEMENT PANEL (MOUNTAIN): MATERIAL: FIBER CEMENT PANEL FINISH: INTEGRATED FINISH MANUFACTURER: NICHHA KURASTONE SERIES STACKEDSTONE COLOR: MOUNTAIN
	MP-1	BASE BID METAL PANEL SYSTEM AT CANOPY (GRAY): MATERIAL: METAL PANEL FINISH: INTEGRATED FINISH MANUFACTURER: LAMINATORS, INC.: OMEGA LITE; 1PIECE, TIGHT-FIT MOLDING INSTALLATION SYSTEM COLOR: TO MATCH PANTONE 426 C ALTERNATE: #1: IN LIEU OF BASE BID ACM AND ACM MOUNTING INSTALLATION SYSTEM, PROVIDE AND INSTALL THE FOLLOWING: <u>ACM MANUFACTURER:</u> FAIRVIEW ARCHITECTURAL <u>ACM PANEL:</u> VITROBOND G2 <u>CLIP MOUNTING SYSTEM:</u> ARROWHEAD EZ WALL SYSTEM <u>KYNAR FINISH:</u> CUSTOM COLOR, COLOR TO MATCH PANTONE 426 C #2: IN LIEU OF BASE BID ACM AND ACM MOUNTING INSTALLATION SYSTEM, PROVIDE AND INSTALL THE FOLLOWING: <u>ACM MANUFACTURER:</u> CITADEL ARCHITECTURAL PRODUCTS <u>ACM PANEL:</u> SINOCORE 4MM PANEL THICKNESS, 1 PC MOLDING SYSTEM <u>CLIP MOUNTING SYSTEM:</u> REVEAL MOLDING SYSTEM <u>FINISH:</u> KYNAR, CUSTOM COLOR, COLOR: TO MATCH PANTONE 426 C REFER TO FULL LIST OF ALTERNATES IN OUTLINE SPECIFICATIONS.

ELEVATION KEY NOTES

- 24" HIGH ILLUMINATED BUILDING MOUNTED SIGNAGE BY OTHERS. REFER TO ELECTRICAL FOR POWER REQUIREMENTS. COORDINATE WITH PNC AND VENDOR(S). ALL CONNECTIONS - STRUCTURAL ENGINEERING, DETAILS, ETC., ARE SUPPLIED BY VENDOR.
- 18" HIGH ILLUMINATED BUILDING SIGNAGE BY OTHERS. REFER TO ELECTRICAL FOR POWER REQUIREMENTS. COORDINATE WITH PNC AND VENDOR(S). ALL CONNECTIONS - STRUCTURAL ENGINEERING, DETAILS, ETC., ARE SUPPLIED BY VENDOR.
- CLEAR ANODIZED STOREFRONT SYSTEM
- METAL COPING SYSTEM, COLOR TO MATCH CLEAR ANODOZED STOREFRONT SYSTEM
- METAL COPING SYSTEM, COLOR TO MATCH MP-1
- SEE ELECTRICAL SHEETS FOR COORDINATION OF CANOPY LIGHTING.
- 4"x4" PREFINISHED METAL DOWNSPOUT, CONNECT TO STORM UNDERGROUND
- PREFINISHED METAL CONDUCTOR BOX SMACNA DESIGN FIGURE 1-25F
- PREFINISHED METAL OVERFLOW SCUPPER PER SMACNA, OPENING SIZE 8"x8" WITH 2" TRIM PLACED 2" ABOVE ROOF LINE.
- RTUs SCREENED BY PARAPET WALL BEYOND, COORDINATE WITH A121 AND MECHANICAL DRAWINGS.
- PREFINISHED METAL THROUGH WALL SCUPPER PER SMACNA, OPENING SIZE 8"x8" WITH 2" TRIM

SHEET NOTES

- G.C. TO PROVIDE A FIELD MOCK-UP OF NICHHA ILLUMINATION PANEL, VINTAGEWOOD, KURASTONE, AND OMEGA LITE PANEL SYSTEM WITH ALL CONDITIONS PRESENT ON THE PROJECT INCLUDING BUT NOT LIMITED TO INSIDE CORNERS, OUTSIDE CORNER, HORIZONTAL TERMINATION, ETC.
- NICHHA KURASTONE PANELS SHALL BE FIELD CUT TO TERMINATE AT 2" ABOVE FINISHED GRADE AND FOLLOW FINISHED GRADING.

 X DENOTES WINDOW TYPE - PENDING CDs



RS&H, Inc.
4582 S ULSTER STREET
SUITE 1100, DENVER, CO 80237
303-409-9700 FAX 303-409-9701

www.rsandh.com
MO LICENSE NOS. 2003019618 * 2003019636



PROJECT TITLE:
**PNC MO LEE'S SUMMIT
GROUND UP BRANCH**

PROJECT ADDRESS:
WEST PRYOR DEVELOPMENT, LOT
9B
NEW PRYOR RD. & NW SUMMIT
WOODS XING
LEE'S SUMMIT, MO 64081

REVISIONS		
NO.	DESCRIPTION	DATE

DATE ISSUED: 12/15/2021
REVIEWED BY: HAW
DRAWN BY: CJ
DESIGNED BY: RSH
PROJECT NUMBER:
524-0368-028
© 2022 RS&H, INC.

SHEET TITLE:
**EXTERIOR
ELEVATIONS**

SHEET ID:
A202

PROJECT STATUS:
50% CONSTRUCTION
DOCUMENTS / DESIGN
DEVELOPMENT