

GENERAL NOTES

- The underground utilities shown herein have been plotted from available information and do not necessarily reflect the actual existence, or nonexistence, size, type, number, or locations of these or other utilities. The contractor shall be responsible for verifying the actual locations of all underground utilities, shown or not shown, and said utilities shall be located in the field prior to any grading, excavation, or construction of improvements. These provisions shall in now way absolve any party from complying with the "UNDERGROUND FACILITY SAFETY AND DAMAGE PREVENTION ACT", Chapter 319, RSMO.
- Gas, Water, and other Utilities shall not conflict with the depth or horizontal location of existing and proposed sanitary and storm sewers, including building laterals.
- The Contractor shall secure all required permits and notify the Development Services - Inspection Group of the City of Lee's Summit (816-969-1200) at least 48 hours prior to any construction.
- Prior to submittal of construction bids, the Contractor shall be required to visit the site to verify existing conditions and proposed improvements.
- All construction materials and methods used shall comply with the latest editions of the City of Lee's Summit "DESIGN AND CONSTRUCTION MANUAL" as adopted by City Ordinance NO. 5813. See said Manual for standard details.
- The Contractor shall be responsible for notification and coordination with all Utility Companies.
- The Contractor shall notify the Engineer immediately of any discrepancies in the plans.
- "Controlled Fill" indicates fill to be placed in accordance with APWA Section 2100 for grading and site preparation, with APWA Section 2200 for street construction (paving), with APWA Section 2500 for sanitary sewer construction and with APWA Section 2600 for storm sewer construction unless otherwise noted.
- All sanitary manholes shall have a 4' inside diameter unless otherwise noted.
- All disturbed areas to be seeded upon completion of construction.

EXISTING SANITARY SEWER ASSUMPTIONS

- Existing sanitary sewer at Point of Connection = 24" PVC at 0.45%.
- Depth of flow at Point of Connection for fully developed watershed to be critical depth.
- Y(c) from "Modern Sewer Design", Figure 3-24, critical flow and critical velocity in circular conduits.

Point of Connection 24" PVC at 0.45% Capacity = 14.0 cfs
Y(c) / D = .60, depth of flow = 15" = 1.25'

PROPOSED SANITARY SEWER ASSUMPTIONS

- Sanitary sewers provide service for this plan only
- Design flow rate of 0.02 cfs / acre per City Staff Recommendation.

DESIGN FLOWS

Drainage Area	Acreage	Design Flow (cfs)	Total Design Flow (cfs)
Commercial	13.75	0.02	0.67
Residential	83.53	0.02	0.80
			Total 1.47

UTILITIES

City of Lee's Summit
Department of Public Works
220 SE Green
Lee's Summit, Mo.
816-969-1800

KCPCL
130 SE Hamblen Road
Lee's Summit, Mo.
816-347-4320
Missouri One Call
1-800-344-7483

Missouri Gas Energy
3025 SE Clover Road
Lee's Summit, Mo.
816-537-4681

AT&T
215 N. Spring
Independence, Mo.
816-325-5610

Time Warner
6550 Winchester Avenue
Kansas City, Mo.
913-643-1901

DEVELOPER
JCM DEVELOPMENT, LLC
1314 MARKET STREET
LEE'S SUMMIT, MO 64082
(816) 786-4008
CONTACT - CHRIS JEFFRIES

ENGINEER
Hg CONSULT, INC.
CONTACT - KEVIN STERRETT
1411 N.E. TODD GEORGE ROAD
LEES SUMMIT, MISSOURI 64086
(816) 703-7098

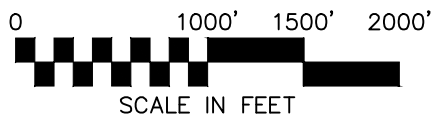
PROJECT BENCHMARK:
#1 MODNR MONUMENT JA-45
N: 986351.65
E: 2824617.51
TOP ELEV. 1012.79

#2 MONUMENT AT THE INTERSECTION OF M150 & DOC HENRY ROAD
N: 977823.53
E: 2828220.61
TOP ELEV. 1006.04

COBEY CREEK - 1ST PLAT
OFF-SITE SANITARY SEWER MAIN EXTENSION
NE & SE 1/4, SECTION 29 & NW 1/4 SECTION 28,
TOWNSHIP 47 NORTH, RANGE 31 WEST
LEE'S SUMMIT, JACKSON COUNTY, MISSOURI



VICINITY MAP



LEGEND

---	Existing Section Line	---	Proposed Right-of-Way
- - - - -	Existing Right-of-Way Line	---	Proposed Property Line
---	Existing Lot Line	---	Proposed Lot Line
- - - - -	Existing Easement Line	---	Proposed Easement
==	Existing Curb & Gutter	==	Proposed Curb & Gutter
---	Existing Sidewalk	==	Proposed Sidewalk
==	Existing Storm Sewer	---	Proposed Storm Sewer
□	Existing Storm Structure	□	Proposed Storm Structure
W	Existing Waterline	A	Proposed Fire Hydrant
- - - - -	Existing Gas Main	W	Proposed Waterline
- - - - -	Existing Sanitary Sewer	---	Proposed Sanitary Sewer
●	Existing Sanitary Manhole	●	Proposed Sanitary Manhole
- - - - -	Existing Contour Major	---	Proposed Contour Major
- - - - -	Existing Contour Minor	---	Proposed Contour Minor
		=====	Future Curb & Gutter

INDEX OF SHEETS

OFF-SITE SANITARY SEWER PLANS

- COVER SHEET
- GENERAL UTILITY LAYOUT - OFF-SITE SANITARY SEWER

SANITARY SEWER - PLAN AND PROFILE

- SANITARY SEWER LINE A (STA. 0+00 TO 15+00)
- SANITARY SEWER LINE A (STA. 15+00 TO 26+49.69)

STANDARD DETAILS

- STANDARD DETAILS - STANDARD PRECAST MANHOLE & MANHOLE WALL CONNECTION
- STANDARD DETAILS - MANHOLE COVER AND FRAME
- STANDARD DETAILS - SANITARY PIPE ENCASEMENT & TYPICAL TRENCHING AND BEDDING DETAIL

LEGAL DESCRIPTION:

All that part of the Southeast Quarter of Section 29, Township 47 North, Range 31 West, more particularly described as follows:

Commencing at the Southeast corner of said Southeast Quarter; thence North 02°30'29" East, along the East line of the Southeast Quarter of said Section 29, a distance of 58.62 feet; thence departing said East line, North 87°29'31" West, a distance of 40.00 feet to the North right-of-way line of Missouri State Highway No. 150, as now established, and the Point of Beginning; thence South 85°26'23" West, along the North right-of-way line of said Missouri State Highway No. 150, a distance of 142.47 feet; thence South 65°50'12" West, continuing along said North right-of-way line, a distance of 27.99 feet; thence continuing along said North right-of-way line, North 87°54'10" West, along a line 30 feet North of and parallel with the South line of said Southeast Quarter, a distance of 1436.75 feet; thence departing said North right-of-way line, North 02°32'36" East, a distance of 2613.35 feet to the North line of said Southeast Quarter; thence South 87°44'49" East, along the North line of said Southeast Quarter, a distance of 1641.53 feet to the Northeast corner of said Southeast Quarter; thence South 02°30'29" West, along the East line of said Southeast Quarter, a distance of 1081.05 feet; thence departing said East line, North 87°29'31" West, a distance of 30.00 feet; thence South 02°30'29" West, along a line 30 feet West of and parallel with the East line of said Southeast Quarter, a distance of 1302.74 feet; thence South 08°13'07" West, a distance of 100.51 feet; thence South 02°30'29" West, along a line 40 feet West of and parallel with the East line of said Southeast Quarter, a distance of 96.45 feet to the Point of Beginning. Containing 4,237,595.37 square feet or 97.28 acres, more or less.

NOTE:

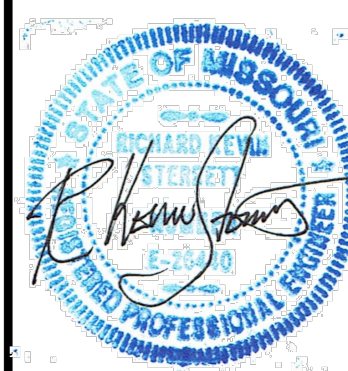
- The subject property is located within the Big Creek Watershed.
- There was no oil or gas wells located on the subject property as of May 14, 2018 as shown by the Missouri Geological Survey GEOSTRAT (Geosciences Technical Resource Assessment Tool).

As Built drawings have been prepared by HG Consult, Inc. Engineering based on elevation shots by Ladwig and Associates on 03/04/2021

AS-BUILT

03/25/21

DATE	REVISION	NO.	BY
03/25/21	REVISED PER INQUIRY FROM M14-5 PER FIELD RE-MEASUREMENT	5	EDH
03/25/21	AS-BUILT	4	EDH
02/20/19	PREP CITY COMMENTS	3	SPW
02/08/19	PREP CITY COMMENTS	2	SPW
01/21/19	PREP CITY COMMENTS	1	SPW
11/27/18	SUBMITTAL TO CITY OF LEE'S SUMMIT	1	SPW



Consult Inc
engineers
planners
11010 Haskell Street, Suite 210, Kansas City, Kansas 66109
CORPORATE LICENSE No. E20100573 (MO.) / E-1746 (KS.)

OFF-SITE SANITARY SEWER MAIN EXTENSION
COVER SHEET

COBEY CREEK FIRST PLAT
LEE'S SUMMIT - JACKSON COUNTY - MISSOURI

X-REF NO. 16-059 Base
DRAWING NO. 16-059 Offsite Sanitary
DATE February 20, 2019
JOB NO. 16-059
SHEET OF

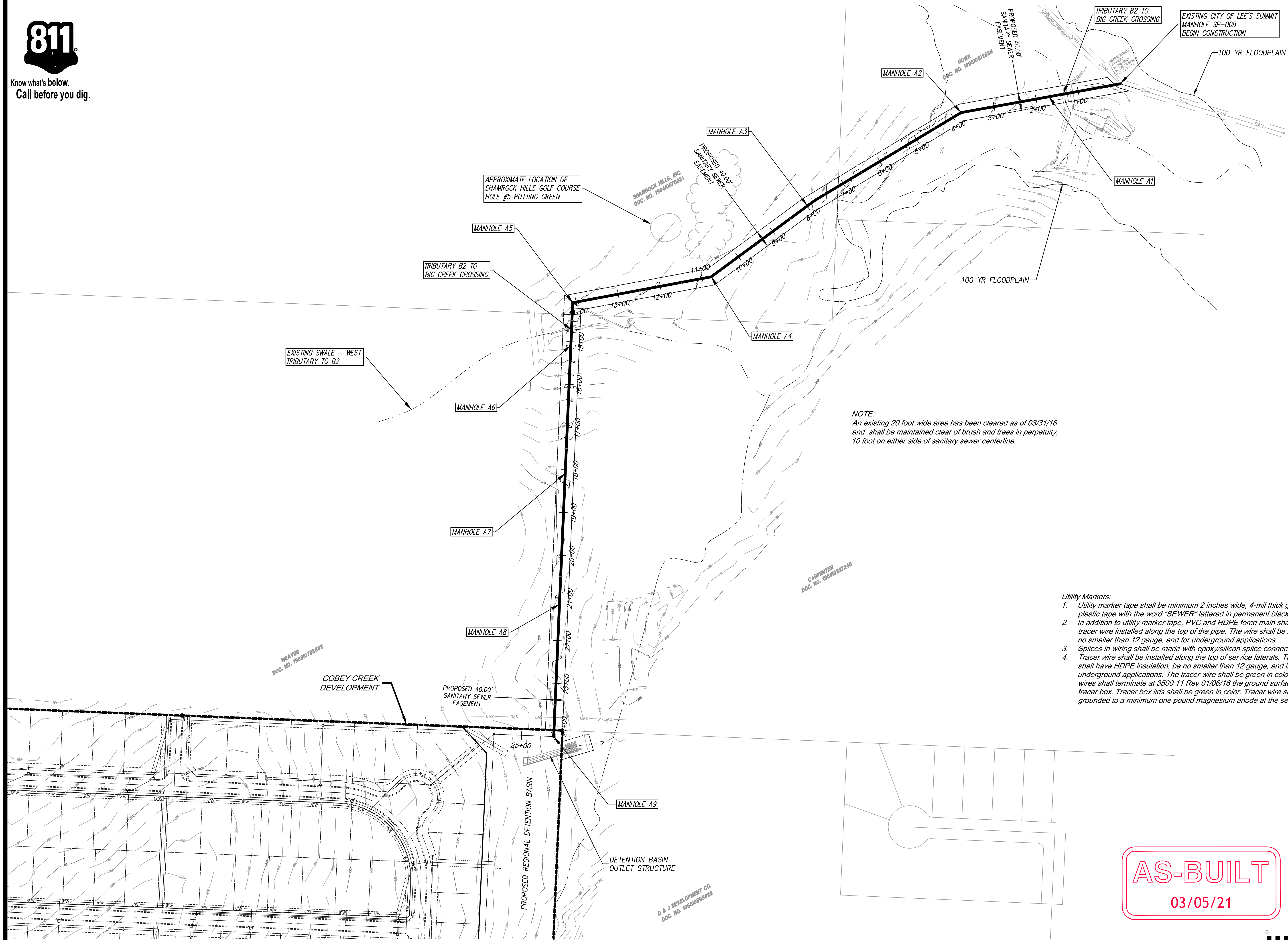
1 7

Prepared: November 21, 2018





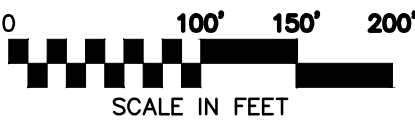
Know what's below.
Call before you dig.



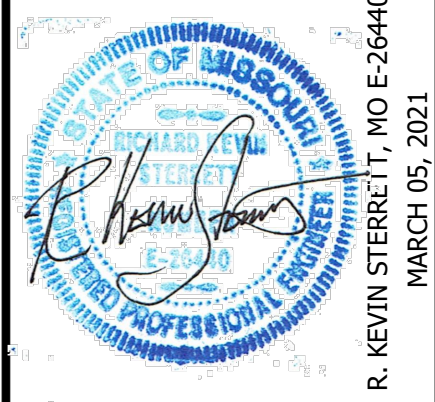
NOTE:
An existing 20 foot wide area has been cleared as of 03/31/18
and shall be maintained clear of brush and trees in perpetuity,
10 foot on either side of sanitary sewer centerline.

- Utility Markers:
- Utility marker tape shall be minimum 2 inches wide, 4-mil thick green plastic tape with the word "SEWER" lettered in permanent black graphics.
 - In addition to utility marker tape, PVC and HDPE force main shall have a tracer wire installed along the top of the pipe. The wire shall be insulated, no smaller than 12 gauge, and for underground applications.
 - Splices in wiring shall be made with epoxy/silicon splice connector.
 - Tracer wire shall be installed along the top of service laterals. The wire shall have HDPE insulation, be no smaller than 12 gauge, and intended for underground applications. The tracer wire shall be green in color. Tracer wires shall terminate at 3500 11 Rev 01/06/16 the ground surface inside a tracer box. Tracer box lids shall be green in color. Tracer wire shall be grounded to a minimum one pound magnesium anode at the sewer line.

AS-BUILT
03/05/21



DATE	REVISION	NO.	BY	CHK/APR
03/05/21	AS-BUILT			
02/20/19	PER CITY COMMENTS	3		
02/20/19	PER CITY COMMENTS	2		
01/21/19	PER CITY COMMENTS	1		
11/21/18	SUBMITTAL TO CITY OF LEE'S SUMMIT			

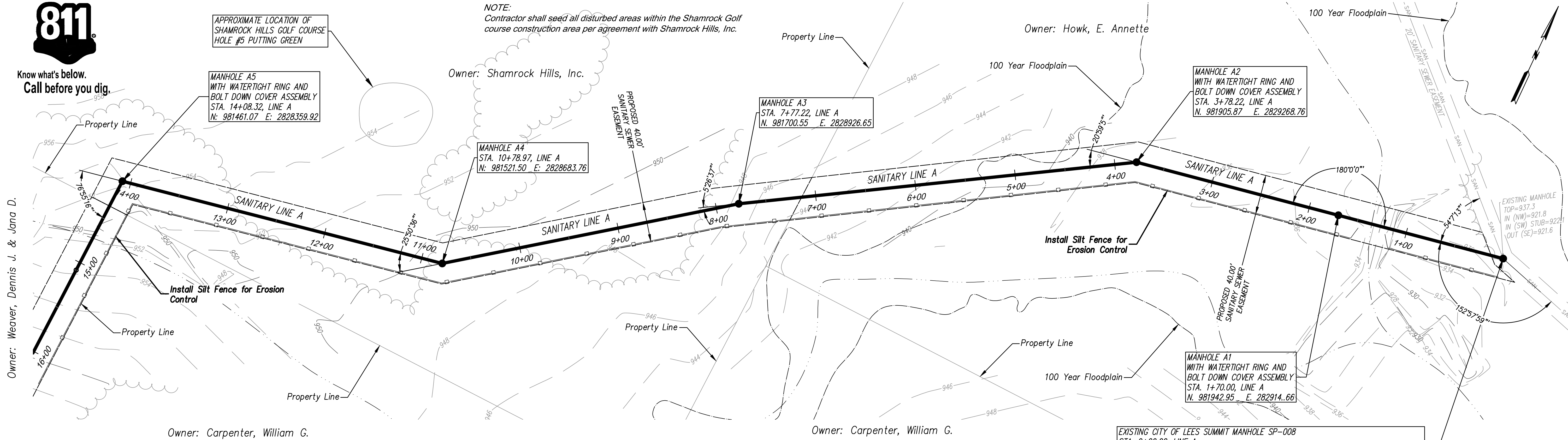


Consult Inc
engineers planners
11010 Haskell Street, Suite 210, Kansas City, Kansas 66109
CORPORATE LICENSE No. E20100573 (MO.) / E-1726 (KS.)

OFF-SITE SANITARY SEWER MAIN EXTENSION GENERAL UTILITY LAYOUT		COBEY CREEK FIRST PLAT LEE'S SUMMIT - JACKSON COUNTY - MISSOURI	
X-REF NO. 16-059 Base		DATE February 20, 2019	
DRAWING NO. 16-059 Offsite Sanitary		JOB NO. 16-059	
2	SHEET OF	7	

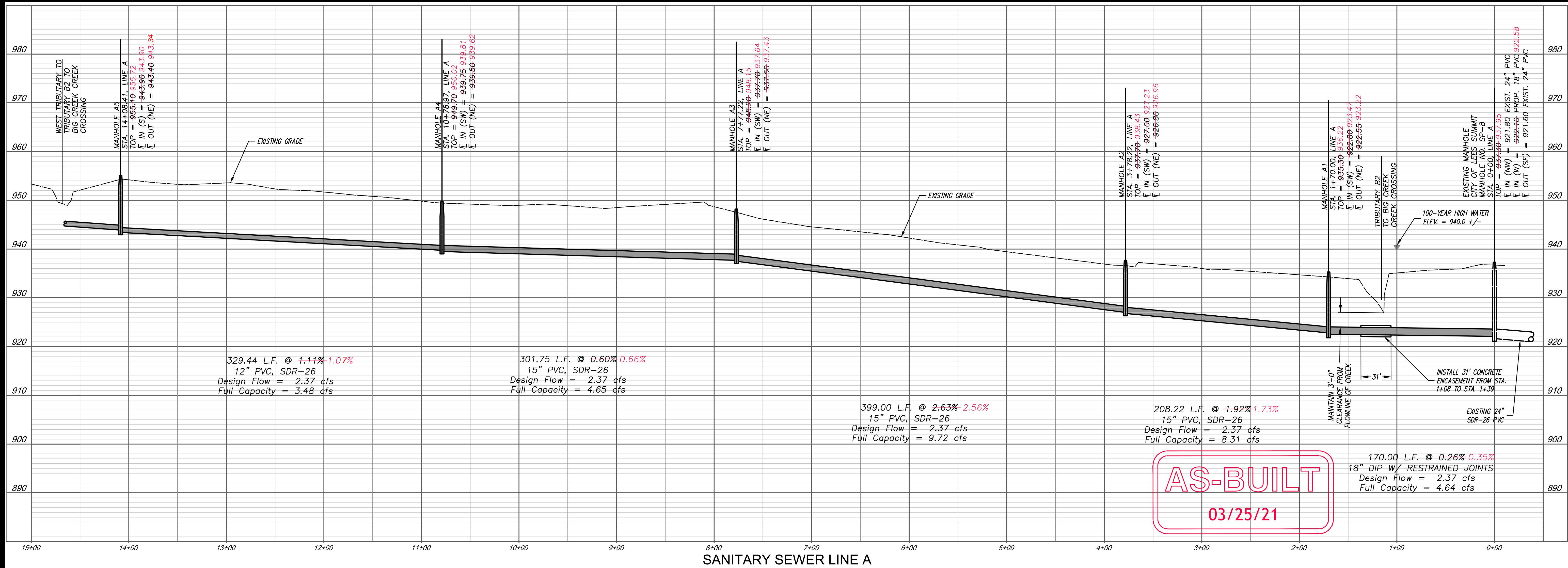
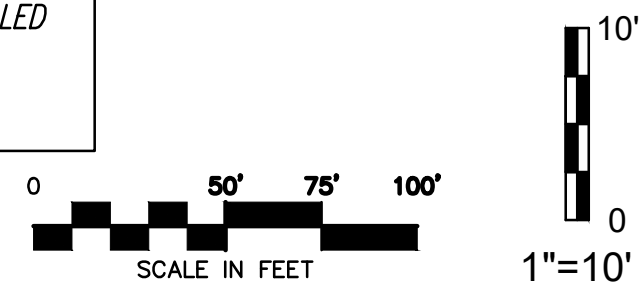


Know what's below.
Call before you dig.



NOTE:
A 20 foot wide area shall be maintained clear of brush and trees in perpetuity 10 foot on either side of sanitary sewer centerline.

NOTE:
Base Flood Elevation shown was determined from Cross Section Line C as shown on F.E.M.A. Flood Insurance Rate Map Number 29095C0551G, Effective Date January 20, 2017.



DATE	REVISION	NO.	BY	CHKD.
02/25/21	REVISED PER INQUIRY FROM MW 4-5 PER FIELD RE-ASSESSMENT	5	EDH	RMS
02/25/21	AS-BUILT	4	EDH	RMS
02/20/19	PER CITY COMMENTS	3	SPW	RMS
02/08/19	PER CITY COMMENTS	2	SPW	RMS
01/21/19	PER CITY COMMENTS	1	SPW	RMS
11/21/18	SUBMITTAL TO CITY OF LEES SUMMIT			



g Consult Inc
engineers planners

11010 Haskell Street, Suite 210, Kansas City, Kansas 66109
CORPORATE LICENSE NO. E20100573 (MO.) / E-1736 (KS.)

OFF-SITE SANITARY SEWER MAIN EXTENSION
PLAN AND PROFILE

COBEY CREEK FIRST PLAT

LEE'S SUMMIT - JACKSON COUNTY - MISSOURI

X-REF. NO.
16-059 Base

DRAWING NO.
16-059 Offsite Sanitary

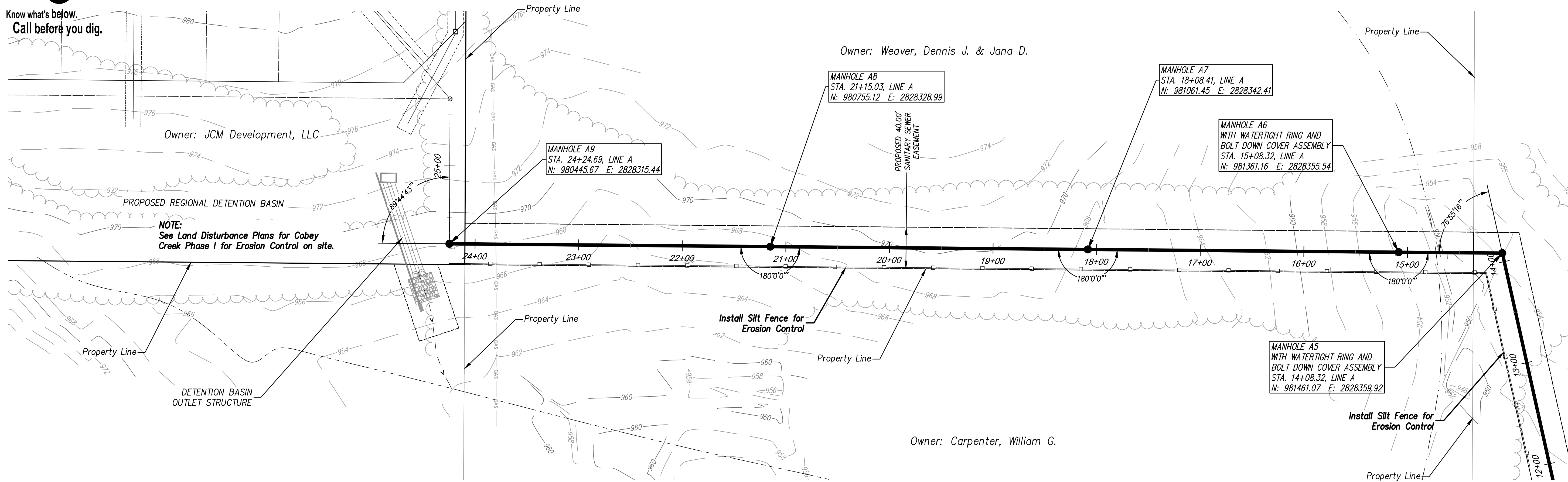
DATE
February 20, 2019

JOB NO.
16-059

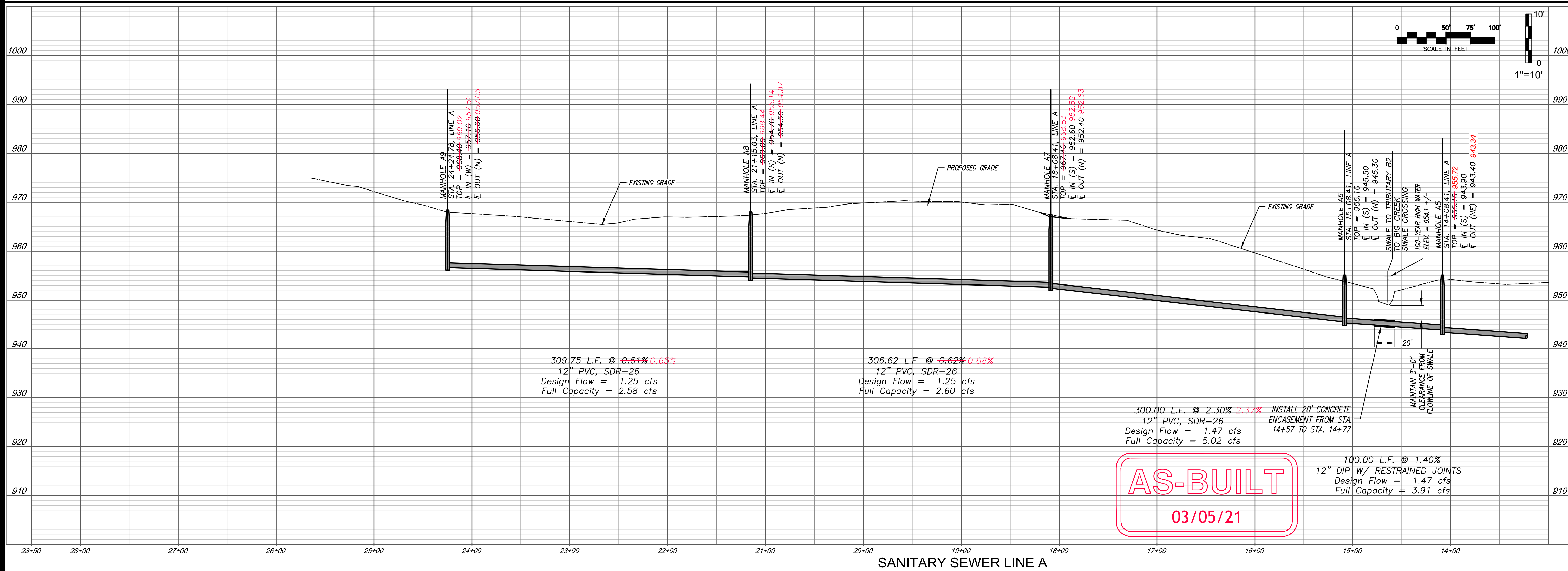
SHEET OF
3 7



Know what's below.
Call before you dig.



Owner: Shamrock Hills, Inc.



NO.	BY	DATE	REVISION
1	SPW	02/20/19	PER CITY COMMENTS
2	SPW	02/20/19	PER CITY COMMENTS
3	SPW	02/20/19	PER CITY COMMENTS
4	SPW	02/20/19	PER CITY COMMENTS
5	SPW	02/20/19	PER CITY COMMENTS
6	SPW	02/20/19	PER CITY COMMENTS
7	SPW	02/20/19	PER CITY COMMENTS
8	SPW	02/20/19	PER CITY COMMENTS
9	SPW	02/20/19	PER CITY COMMENTS
10	SPW	02/20/19	PER CITY COMMENTS
11	SPW	02/20/19	PER CITY COMMENTS
12	SPW	02/20/19	PER CITY COMMENTS
13	SPW	02/20/19	PER CITY COMMENTS
14	SPW	02/20/19	PER CITY COMMENTS
15	SPW	02/20/19	PER CITY COMMENTS
16	SPW	02/20/19	PER CITY COMMENTS
17	SPW	02/20/19	PER CITY COMMENTS
18	SPW	02/20/19	PER CITY COMMENTS
19	SPW	02/20/19	PER CITY COMMENTS
20	SPW	02/20/19	PER CITY COMMENTS
21	SPW	02/20/19	PER CITY COMMENTS
22	SPW	02/20/19	PER CITY COMMENTS
23	SPW	02/20/19	PER CITY COMMENTS
24	SPW	02/20/19	PER CITY COMMENTS
25	SPW	02/20/19	PER CITY COMMENTS
26	SPW	02/20/19	PER CITY COMMENTS
27	SPW	02/20/19	PER CITY COMMENTS
28	SPW	02/20/19	PER CITY COMMENTS
29	SPW	02/20/19	PER CITY COMMENTS
30	SPW	02/20/19	PER CITY COMMENTS
31	SPW	02/20/19	PER CITY COMMENTS
32	SPW	02/20/19	PER CITY COMMENTS
33	SPW	02/20/19	PER CITY COMMENTS
34	SPW	02/20/19	PER CITY COMMENTS
35	SPW	02/20/19	PER CITY COMMENTS
36	SPW	02/20/19	PER CITY COMMENTS
37	SPW	02/20/19	PER CITY COMMENTS
38	SPW	02/20/19	PER CITY COMMENTS
39	SPW	02/20/19	PER CITY COMMENTS
40	SPW	02/20/19	PER CITY COMMENTS
41	SPW	02/20/19	PER CITY COMMENTS
42	SPW	02/20/19	PER CITY COMMENTS
43	SPW	02/20/19	PER CITY COMMENTS
44	SPW	02/20/19	PER CITY COMMENTS
45	SPW	02/20/19	PER CITY COMMENTS
46	SPW	02/20/19	PER CITY COMMENTS
47	SPW	02/20/19	PER CITY COMMENTS
48	SPW	02/20/19	PER CITY COMMENTS
49	SPW	02/20/19	PER CITY COMMENTS
50	SPW	02/20/19	PER CITY COMMENTS
51	SPW	02/20/19	PER CITY COMMENTS
52	SPW	02/20/19	PER CITY COMMENTS
53	SPW	02/20/19	PER CITY COMMENTS
54	SPW	02/20/19	PER CITY COMMENTS
55	SPW	02/20/19	PER CITY COMMENTS
56	SPW	02/20/19	PER CITY COMMENTS
57	SPW	02/20/19	PER CITY COMMENTS
58	SPW	02/20/19	PER CITY COMMENTS
59	SPW	02/20/19	PER CITY COMMENTS
60	SPW	02/20/19	PER CITY COMMENTS
61	SPW	02/20/19	PER CITY COMMENTS
62	SPW	02/20/19	PER CITY COMMENTS
63	SPW	02/20/19	PER CITY COMMENTS
64	SPW	02/20/19	PER CITY COMMENTS
65	SPW	02/20/19	PER CITY COMMENTS
66	SPW	02/20/19	PER CITY COMMENTS
67	SPW	02/20/19	PER CITY COMMENTS
68	SPW	02/20/19	PER CITY COMMENTS
69	SPW	02/20/19	PER CITY COMMENTS
70	SPW	02/20/19	PER CITY COMMENTS
71	SPW	02/20/19	PER CITY COMMENTS
72	SPW	02/20/19	PER CITY COMMENTS
73	SPW	02/20/19	PER CITY COMMENTS
74	SPW	02/20/19	PER CITY COMMENTS
75	SPW	02/20/19	PER CITY COMMENTS
76	SPW	02/20/19	PER CITY COMMENTS
77	SPW	02/20/19	PER CITY COMMENTS
78	SPW	02/20/19	PER CITY COMMENTS
79	SPW	02/20/19	PER CITY COMMENTS
80	SPW	02/20/19	PER CITY COMMENTS
81	SPW	02/20/19	PER CITY COMMENTS
82	SPW	02/20/19	PER CITY COMMENTS
83	SPW	02/20/19	PER CITY COMMENTS
84	SPW	02/20/19	PER CITY COMMENTS
85	SPW	02/20/19	PER CITY COMMENTS
86	SPW	02/20/19	PER CITY COMMENTS
87	SPW	02/20/19	PER CITY COMMENTS
88	SPW	02/20/19	PER CITY COMMENTS
89	SPW	02/20/19	PER CITY COMMENTS
90	SPW	02/20/19	PER CITY COMMENTS
91	SPW	02/20/19	PER CITY COMMENTS
92	SPW	02/20/19	PER CITY COMMENTS
93	SPW	02/20/19	PER CITY COMMENTS
94	SPW	02/20/19	PER CITY COMMENTS
95	SPW	02/20/19	PER CITY COMMENTS
96	SPW	02/20/19	PER CITY COMMENTS
97	SPW	02/20/19	PER CITY COMMENTS
98	SPW	02/20/19	PER CITY COMMENTS
99	SPW	02/20/19	PER CITY COMMENTS
100	SPW	02/20/19	PER CITY COMMENTS



Consult Inc
engineers planners

11010 Haskell Street, Suite 210, Kansas City, Kansas 66109
CORPORATE LICENSE NO. E20100573 (MO.) / E-1736 (KS.)

OFF-SITE SANITARY SEWER MAIN EXTENSION
PLAN AND PROFILE

COBEY CREEK FIRST PLAT

LEE'S SUMMIT - JACKSON COUNTY - MISSOURI

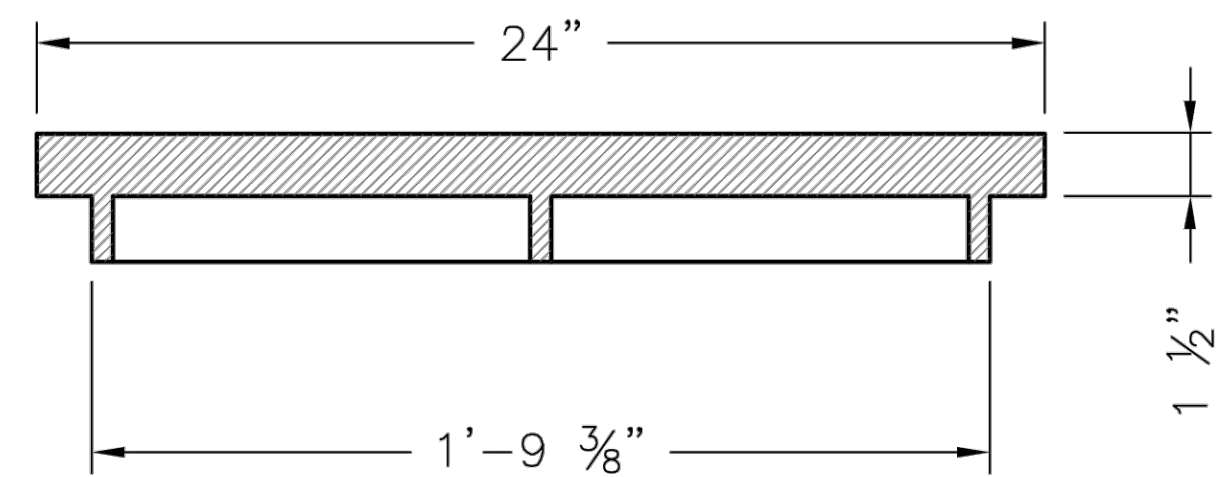
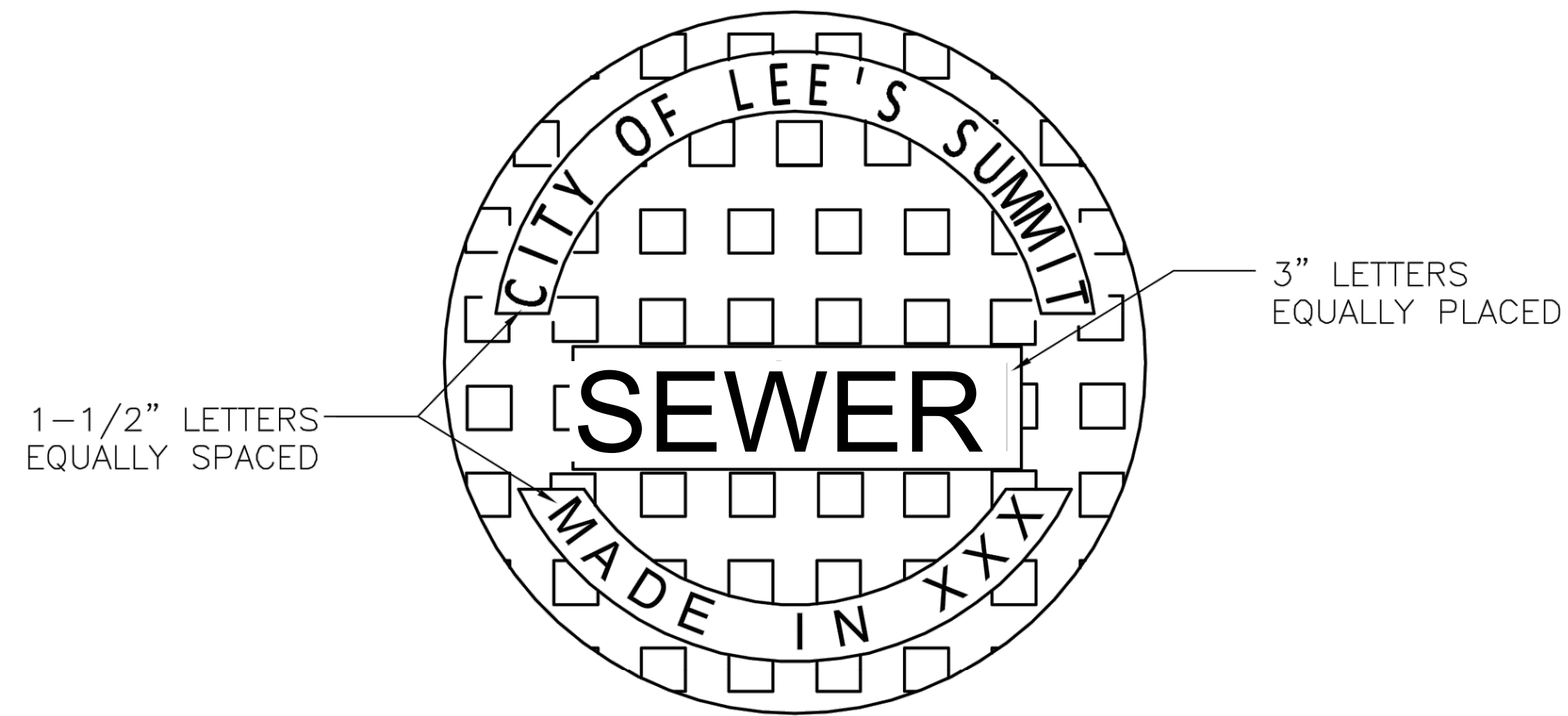
X-REF NO.
16-059 Base

DRAWING NO.
16-059 Offsite Sanitary

DATE
February 20, 2019

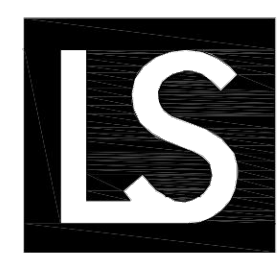
JOB NO.
16-059

SHEET OF 7



STANDARD 24" MANHOLE COVER
MINIMUM WEIGHT = 160 LB
NOTE: PICK HOLES NOT SHOWN

*COVER AND FRAME MODEL INFORMATION REFER TO
THE STORMWATER APPROVED PRODUCT LIST.



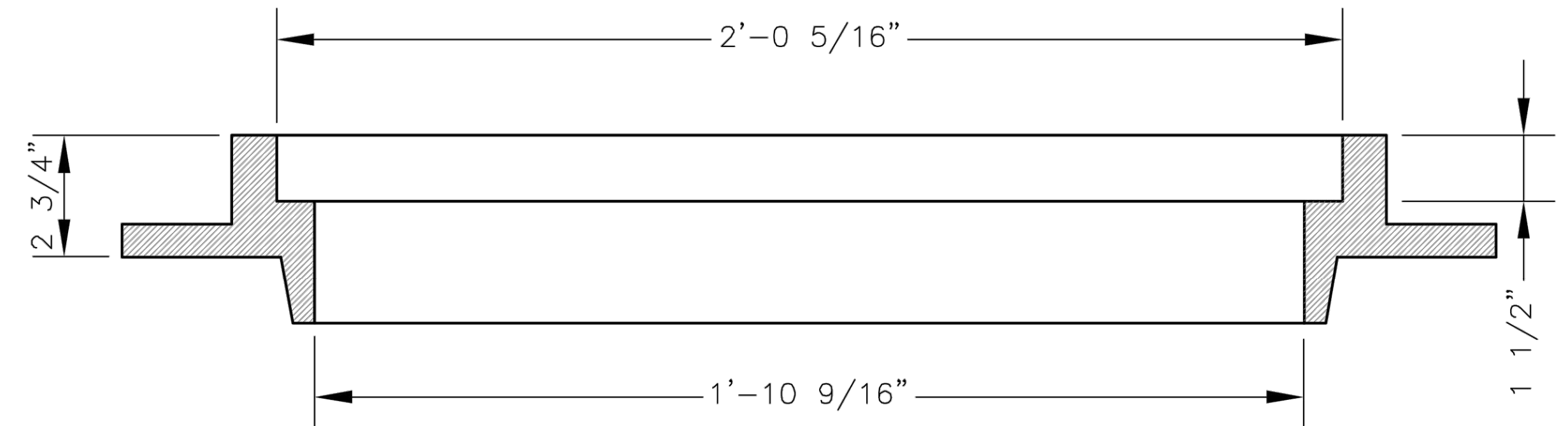
**LEE'S SUMMIT
MISSOURI**

PUBLIC WORKS ENGINEERING DIVISION | 220 SE GREEN STREET | LEE'S SUMMIT, MO 64063

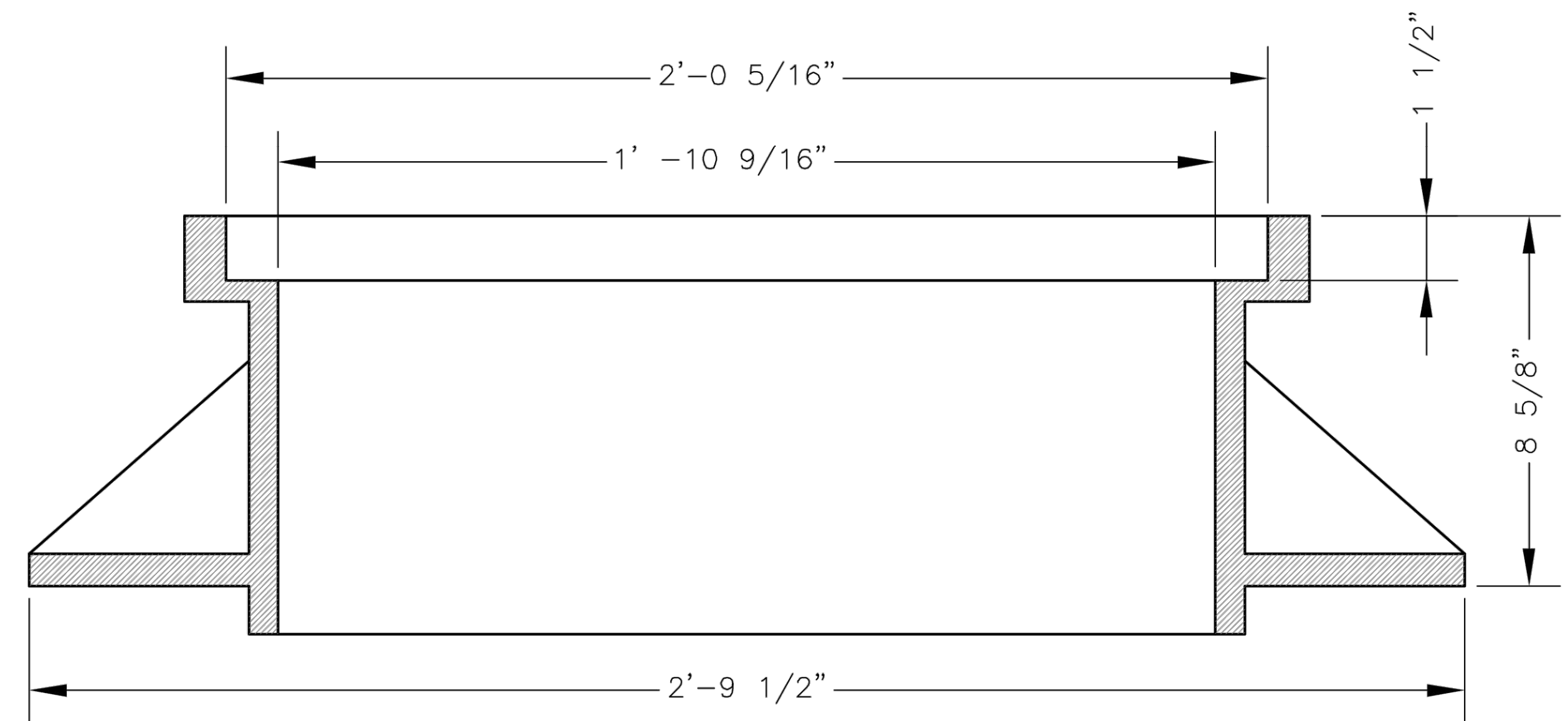
SANITARY MANHOLE COVER DETAIL

Date: 04/17
Drawn By: MJF
Checked By: DL

STM-6

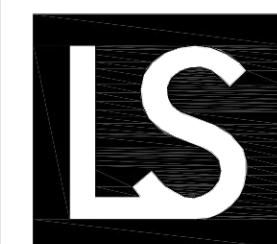


SLAB MANHOLE FRAME
LEE'S SUMMIT PART NO.: LS103A
MINIMUM WEIGHT = 145 LB



STANDARD 24" MANHOLE FRAME
LEE'S SUMMIT PART NO.: LS101A
MINIMUM WEIGHT = 250 LB

*COVER AND FRAME MODEL INFORMATION REFER TO
THE STORMWATER APPROVED PRODUCTS LIST.



**LEE'S SUMMIT
MISSOURI**

PUBLIC WORKS ENGINEERING DIVISION | 220 SE GREEN STREET | LEE'S SUMMIT, MO 64063

SANITARY MANHOLE FRAME DETAIL

Date: 04/17
Drawn By: MJF
Checked By: DL

STM-7

AS-BUILT
03/05/21



11010 Haskell Street, Suite 210, Kansas City, Kansas 66109
CORPORATE LICENSE No. E20100573 (MO.) / E-1736 (KS.)

OFF-SITE SANITARY SEWER MAIN EXTENSION
SANITARY DETAILS

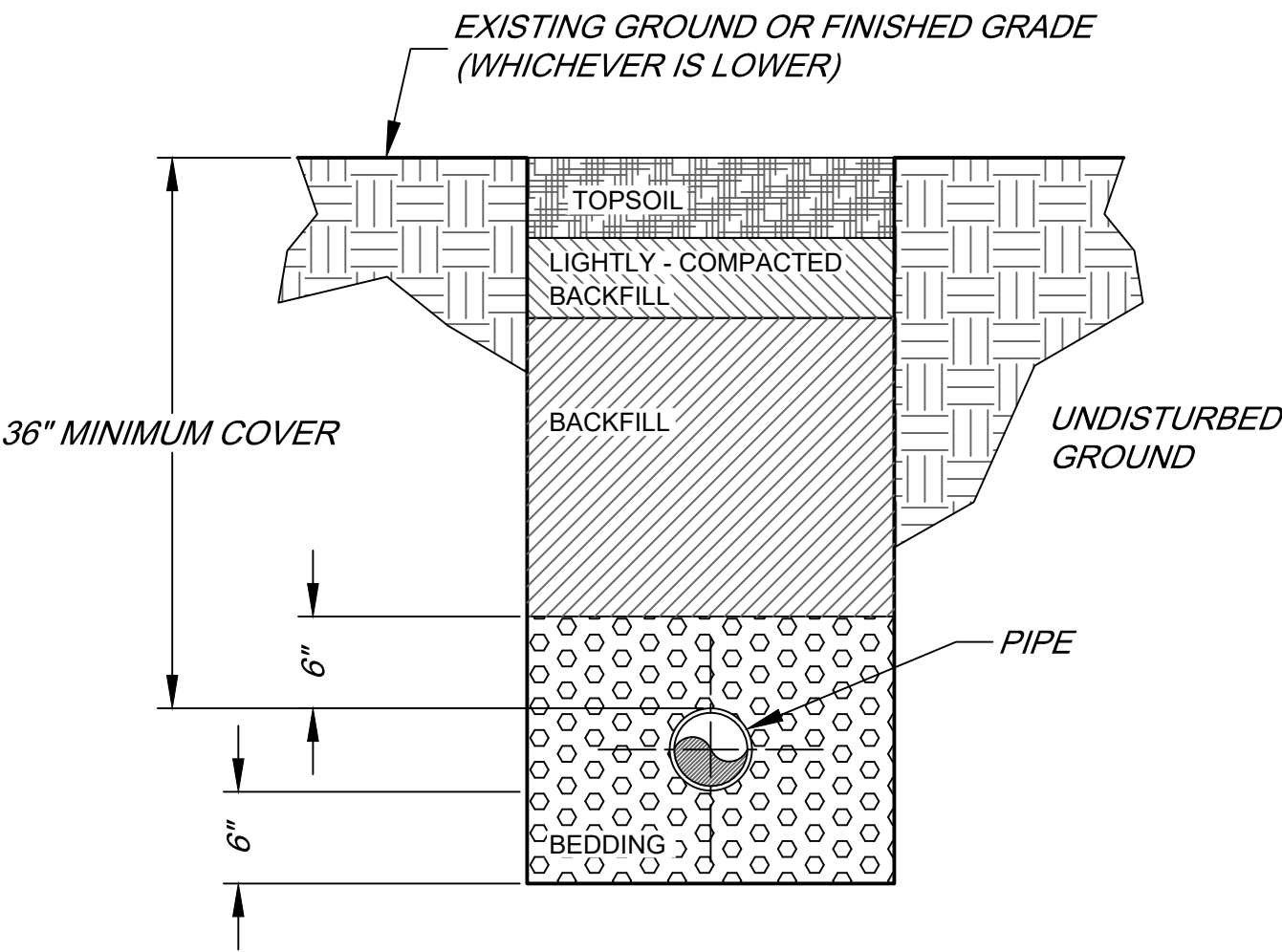
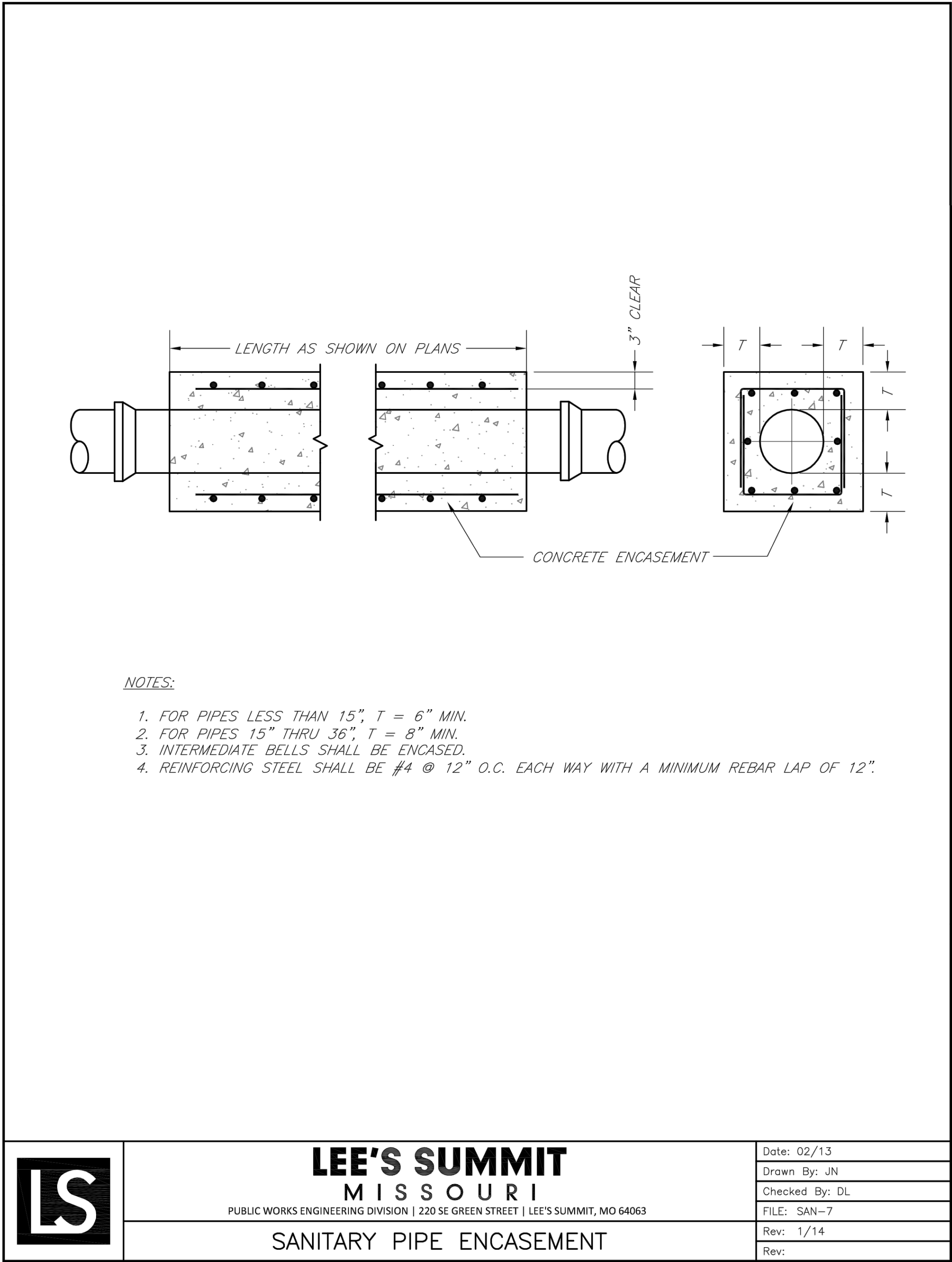
COBEY CREEK FIRST PLAT
LEE'S SUMMIT - JACKSON COUNTY - MISSOURI

X-REF NO.
16-059 Base
DRAWING NO.
16-059 Offsite Sanitary
DATE
February 20, 2019
JOB NO.
16-059

6 SHEET OF 7

DATE	REVISION	NO.	BY	CHK/APR
03/05/21	AS-BUILT			RKS
02/20/19	PER CITY COMMENTS	3	SPW	RKS
02/20/19	PER CITY COMMENTS	2	SPW	RKS
01/23/19	PER CITY COMMENTS	1	SPW	RKS
11/21/18	SUBMITTAL TO CITY OF LEE'S SUMMIT			RKS

IF THIS IS NOT A BLUE INK SEAL AND THE SIGNATURE IN BLUE INK, THE PLAN IS A COPY AND MAY CONTAIN UNAUTHORIZED ALTERATIONS. THE CERTIFICATION CONTAINED ON THIS DOCUMENT SHALL NOT APPLY TO ANY COPIES.



SANITARY SEWER TYPICAL
TRENCHING AND BEDDING DETAIL
NOT TO SCALE

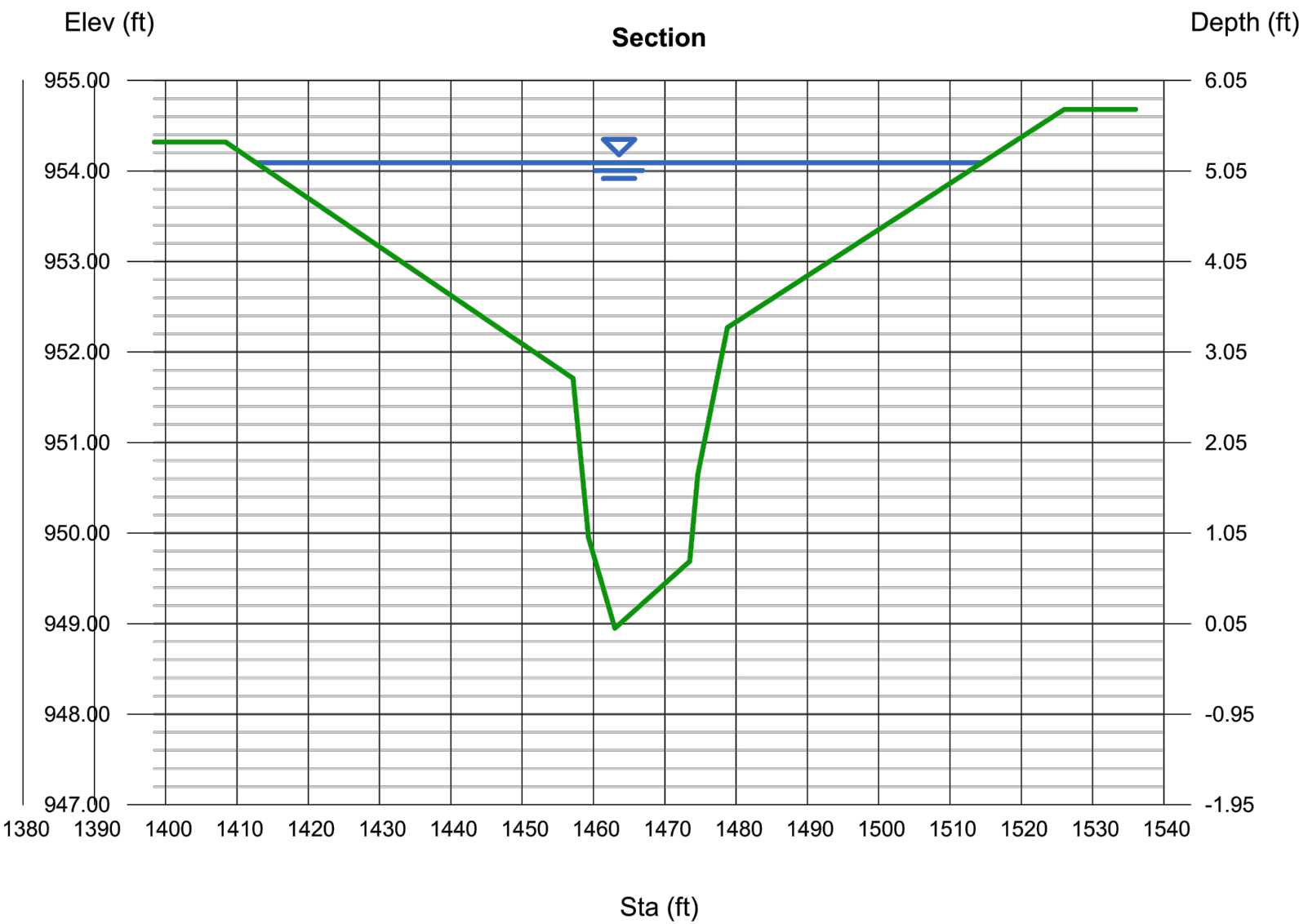
- NOTES:
1. BEDDING:
BEDDING AGGREGATE SHALL BE PLACED FROM A LEVEL OF 6 INCHES BELOW THE BOTTOM OF THE PIPE TO A LEVEL OF 6 INCHES ABOVE THE TOP OF THE PIPE.
 2. BACKFILL:
A) TRENCH FOUNDATION:
THE AREA AT THE BOTTOM OF THE EXCAVATION SHALL BE COMPOSED OF A STABLE MATERIAL CAPABLE OF SUPPORTING THE PLACEMENT OF BEDDING MATERIAL, PIPE, OR STRUCTURES.
B) BACKFILL OF ALL PIPES UNDER ROADWAYS, CURB AND GUTTER AND ALL OTHER PAVED AREAS WITHIN THE RIGHT OF WAY SHALL CONSIST OF FLOWABLE BACKFILL AS SPECIFIED IN APIWA SPEC. 2100 PARAGRAPH 2602.2H MIX DESIGN TYPE A. THE FLOWABLE BACKFILL SHALL EXTEND 2 FEET FROM THE BACK OF CURB TO 2 FEET BACK OF CURB, UP TO 18" INCHES BELOW FINISHED GRADE. FOR EXISTING ROADWAYS FLOWABLE BACKFILL SHALL BE EXTENDED TO THE BASE OF PAVEMENT.

Channel Report

Hydraflow Express Extension for Autodesk® AutoCAD® Civil 3D® by Autodesk, Inc. Wednesday, Feb 6 2019

Cobey Creek Swale to Tributary B2

User-defined		Highlighted	
Invert Elev (ft)	= 948.95	Depth (ft)	= 5.14
Slope (%)	= 0.80	Q (cfs)	= 479.00
N-Value	= 0.069	Area (sqft)	= 175.08
		Velocity (ft/s)	= 2.74
		Wetted Perim (ft)	= 103.32
Calculations		Crit Depth, Yc (ft)	= 3.74
Compute by:	Known Q	Top Width (ft)	= 101.76
Known Q (cfs)	= 479.00	EGL (ft)	= 5.26
(Sta, El, n)-(Sta, El, n)...			
(-1408.41, 954.32)-(-1446.65, 952.27, 0.080)-(-1457.14, 951.71, 0.050)-(-1459.29, 949.95, 0.035)-(-1462.99, 948.95, 0.035)-(-1473.51, 949.69, 0.035)-(-1474.65, 950.65, -0.1478.78, 952.27, 0.050)-(-1528.03, 954.69, 0.080)			



SWALE TO TRIBUTARY B2 WATER SURFACE
CALCULATIONS AT SANITARY SEWER CROSSING

AS-BUILT
03/05/21

Consult
Inc
engineers
planners

11010 Haskell Street, Suite 210, Kansas City, Kansas 66109
CORPORATE LICENSE No. E20100573 (MO.) / E-1736 (KS.)

OFF-SITE SANITARY SEWER MAIN EXTENSION
SANITARY DETAILS

COBEY CREEK FIRST PLAT
LEE'S SUMMIT - JACKSON COUNTY - MISSOURI

X-REF NO.
16-059 Base

DRAWING NO.
16-059 Offsite Sanitary

DATE
February 20, 2019

JOB NO.
16-059

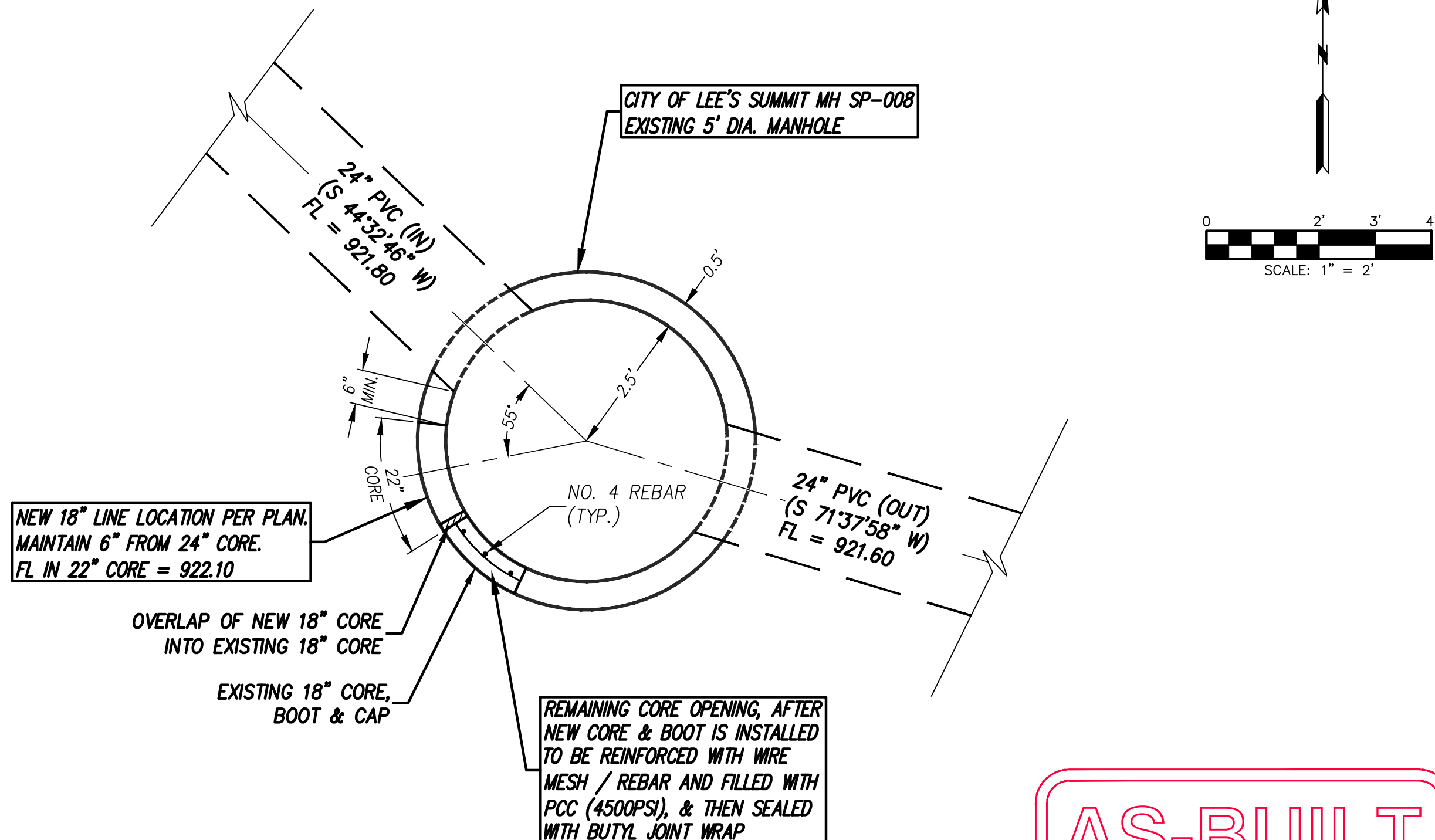
SHEET
OF

7

7

DATE	REVISION	NO.	BY	CHK/APR
03/05/21	AS-BUILT			RKS
02/20/19	PER CITY COMMENTS	3		RKS
02/20/19	PER CITY COMMENTS	2		RKS
01/17/19	PER CITY COMMENTS	1		RKS
11/07/18	SUBMITTAL TO CITY OF LEE'S SUMMIT			RKS

IF THIS IS NOT A BLUE INK SEAL AND THE SIGNATURE IN BLUE INK, THE PLAN IS A COPY AND MAY CONTAIN UNAUTHORIZED ALTERATIONS. THE CERTIFICATION CONTAINED ON THIS DOCUMENT SHALL NOT APPLY TO ANY COPIES

[illegible]

AS-BUILT

03/05/21