

**ADDENDUM TO APPROVED PLANS**

**RELEASED FOR  
CONSTRUCTION**  
 As Noted on Plans Review  
 Development Services Department  
 Lee's Summit, Missouri  
 01/28/2022



APPROVER/REVIEW AUTHORITY  
 PLEASE REVIEW THIS DRAWING CAREFULLY

THIS DRAWING REPRESENTS OUR INTERPRETATION OF THE CONTRACT DOCUMENTS. HOWEVER, THE STEEL FABRICATOR AND THE STRUCTURAL STEEL DETAILER ASSUME NO RESPONSIBILITY FOR THE ACCURACY OF THE INFORMATION SHOWN ON THE CONTRACT DOCUMENTS, ARCHITECTURAL AND STRUCTURAL DESIGN DRAWINGS. THIS IS THE RESPONSIBILITY OF THE BUYER. UNLESS NOTED TO THE CONTRARY, ON THIS DRAWING WHEN IT IS RETURNED FROM THE APPROVAL PROCESS IT WILL BE ASSUMED THAT ALL INFORMATION SHOWN HEREIN HAS THE AFFIRMATION OF THE APPROVAL AUTHORITY. SUBSEQUENT CHANGES TO THE INFORMATION SHOWN ON THIS DRAWING AFTER THE FIRST SUBMISSION WILL BE CONSIDERED AS CONTRACT CHANGES AND ARE SUBJECT TO ADDITIONAL COST.

REVISION			
NO.	DATE	DESCRIPTION	RVSD BY
1	11-11-21	FOR APPROVAL	WM
2	12-21-21	ADDED APPROACH RAILING @ NORTH CURB RAILING	WM
3			
4			
5			
6			
7			



**SHAWNEE STEEL  
& WELDING INC.**

6124 MERRIAM DRIVE  
 MERRIAM, KANSAS 66203  
 (913) 432-8046

PROJECT: PARAGON STAR WEST BRIDGE @ SPORTS COMPLEX  
 LOCATION: VIEW HIGH DR., VIEW HIGH PKWY, RIVER RD., LEE SUMMIT, MO  
 PROJECT #12720.62  
 ARCHITECT: CRAIG DEROY ROGGE - MO # A-905244  
 CUSTOMER: -  
 SUBJECT: WEST BRIDGE ELEVATION VIEW

REVISION	DRAWN BY	JOB NO.	DWG. NO.
B	WM CHECKED BY WS	21-0042	WE2

## ADDENDUM TO APPROVED PLANS

**RELEASED FOR  
CONSTRUCTION**  
As Noted on Plans Review

**Development Services Department  
Lee's Summit, Missouri  
01/28/2022**

NOTE 1:  
ALL VENT HOLES REQ'D FOR GALV.  
ARE LOCATED ON THE EXTERIOR FACE.  
HORIZONTAL RAILS VENT HOLES MAY  
BE LOCATED ON BOTTOM FACE.

NOTE 2:  
ACCENT RAILS ARE LOCATED ON THE  
EXTERIOR FACE.—TYP



APPROVER/REVIEW AUTHORITY  
PLEASE REVIEW THIS DRAWING CAREFULLY

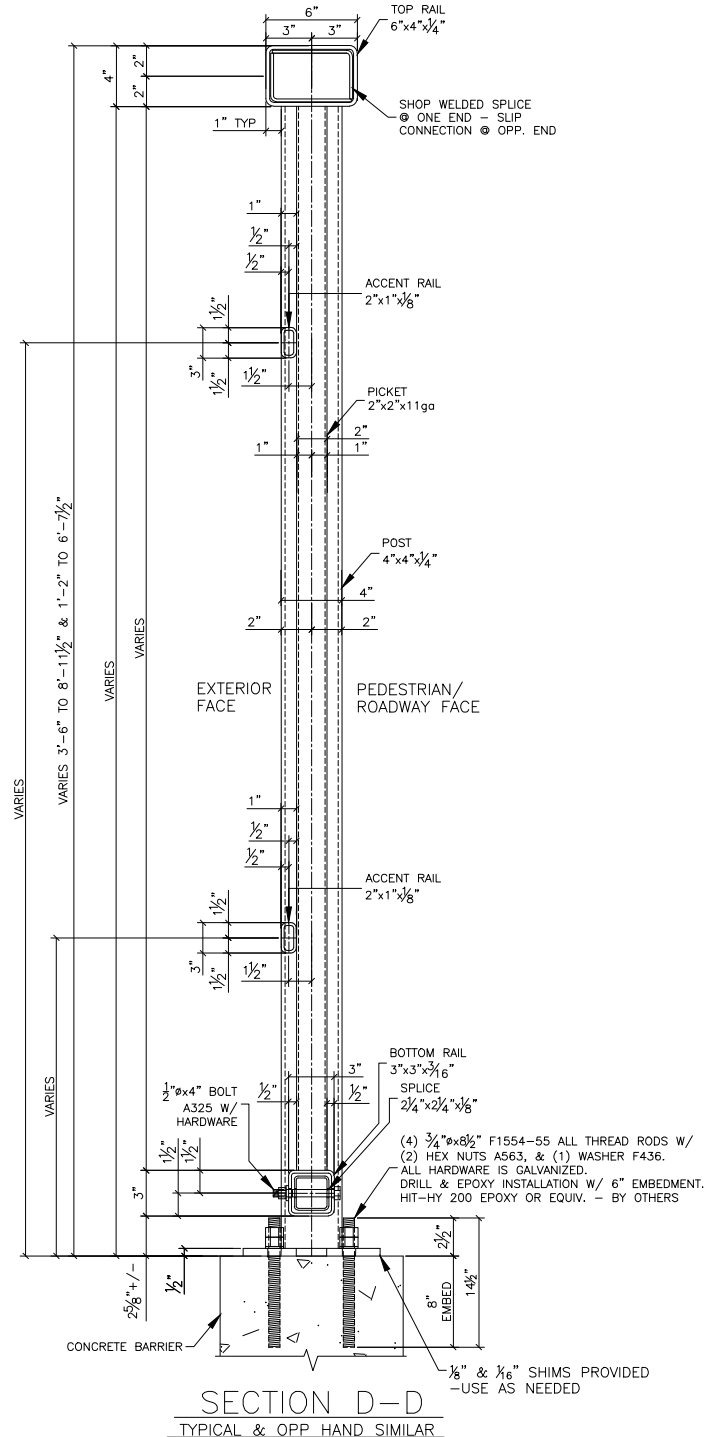
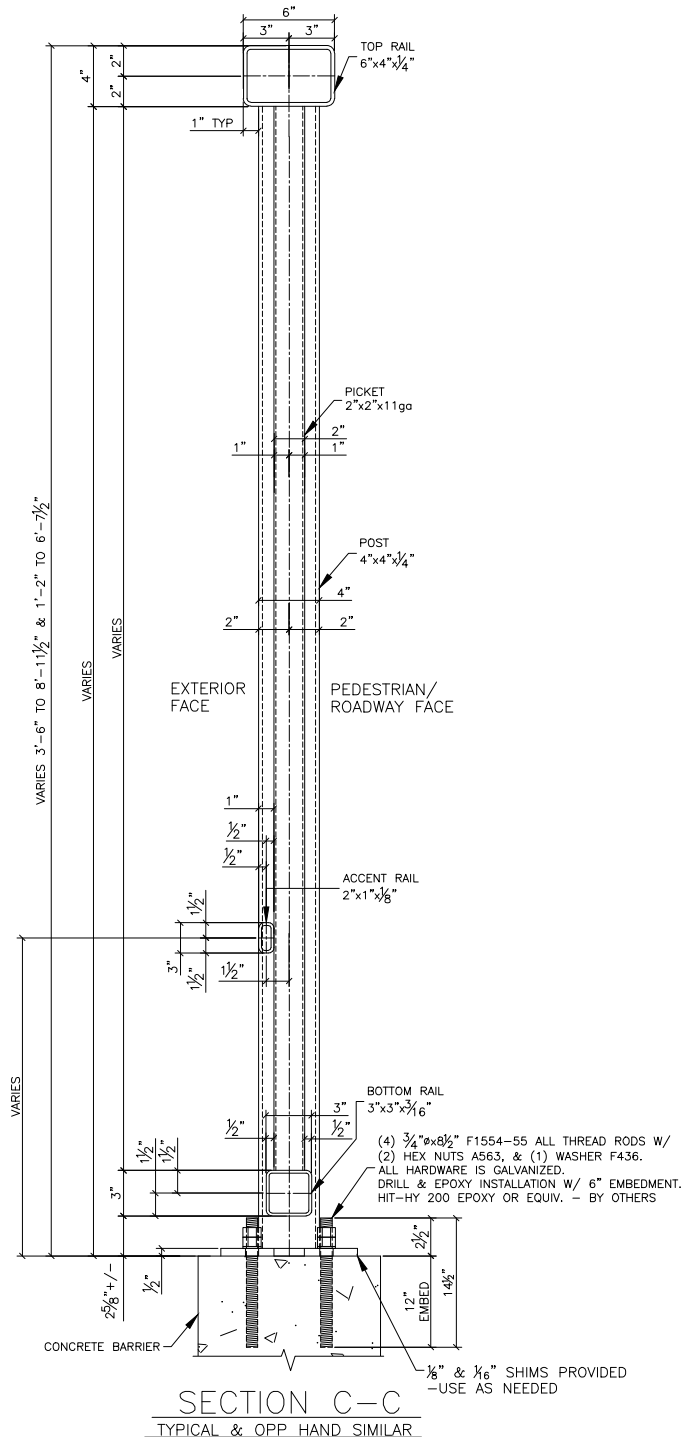
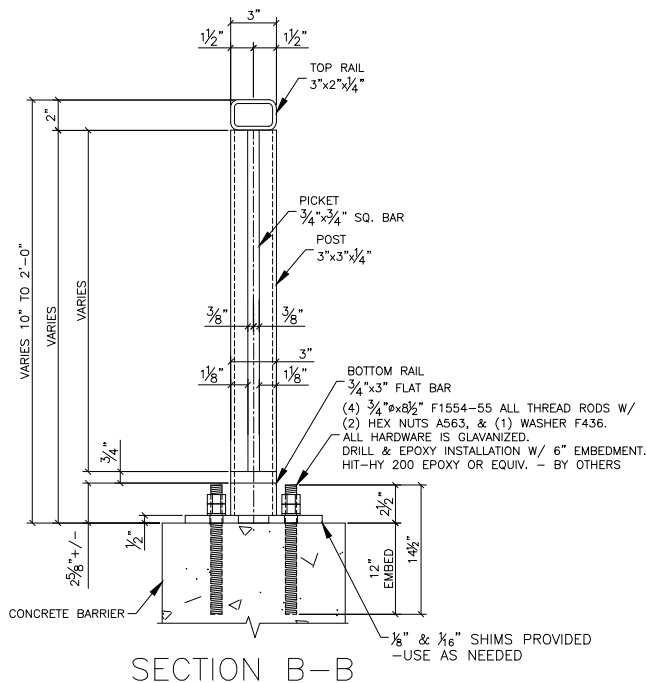
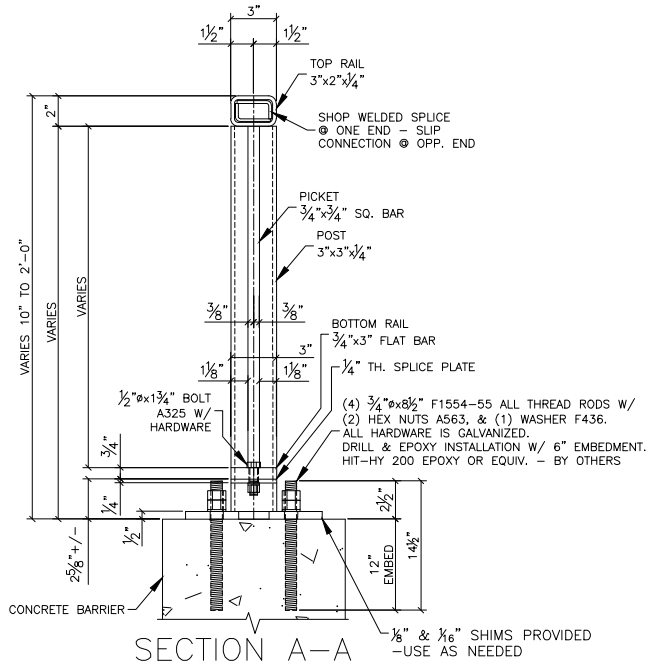
THIS DRAWING REPRESENTS OUR INTERPRETATION OF THE CONTRACT DOCUMENTS. HOWEVER, THE STEEL FABRICATOR AND THE STRUCTURAL STEEL DETAILER ASSUME NO RESPONSIBILITY FOR THE ACCURACY OF THE INFORMATION SHOWN ON THE CONTRACT DOCUMENTS, ARCHITECTURAL AND STRUCTURAL DESIGN DRAWINGS. THIS IS THE RESPONSIBILITY OF THE BUYER. UNLESS NOTED TO THE CONTRARY, ON THIS DRAWING WHEN IT IS RETURNED FROM THE APPROVAL PROCESS IT WILL BE ASSUMED THAT ALL INFORMATION SHOWN HEREIN HAS THE AFFIRMATION OF THE APPROVAL AUTHORITY. SUBSEQUENT CHANGES TO THE INFORMATION SHOWN ON THIS DRAWING AFTER THE FIRST SUBMISSION WILL BE CONSIDERED AS CONTRACT CHANGES AND ARE SUBJECT TO ADDITIONAL COST.

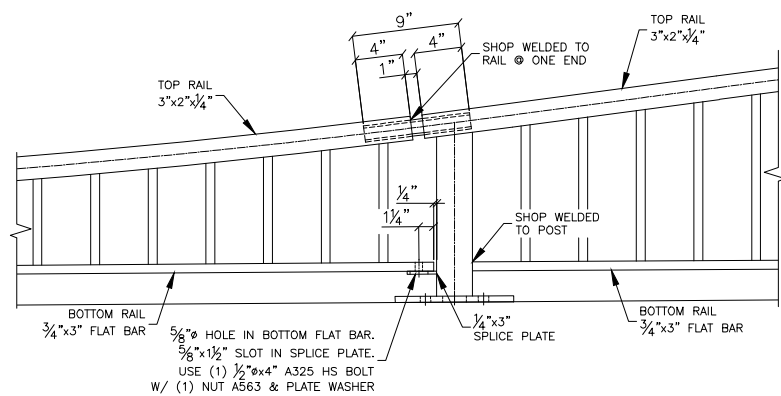
[illegible]

6124 MERRIAM DRIVE  
MERRIAM, KANSAS 66203  
(913) 432-8046

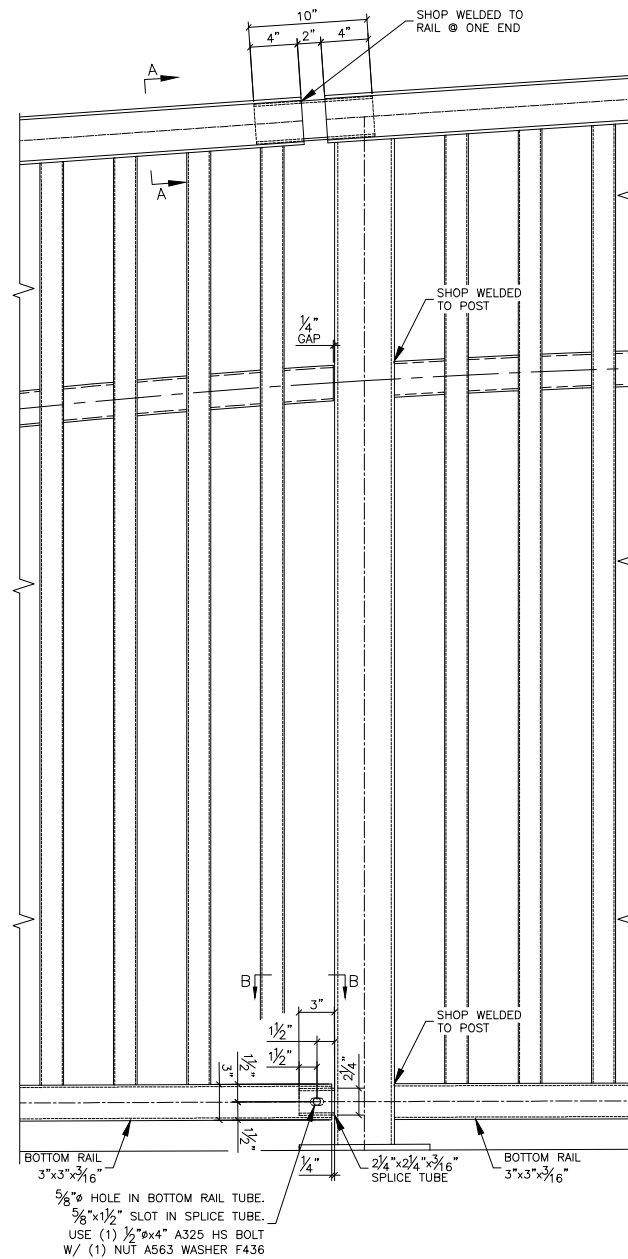
PROJECT: PARAGON STAR WEST BRIDGE @ SPORTS COMPLEX
LOCATION: VIEW HIGH DR., VIEW HIGH PKWY, RIVER RD., LEE SUMMIT, MO
PROJECT #12720.62
ARCHITECT: CRAIG DEROY ROGGE - MO # A-905244
CUSTOMER: -
SUBJECT: WEST BRIDGE ELEVATION/SECTION VIEW

REVISION A	DRAWN BY WM	JOB NO. 21-0042	DWG. NO. WE3
	CHECKED BY WS		

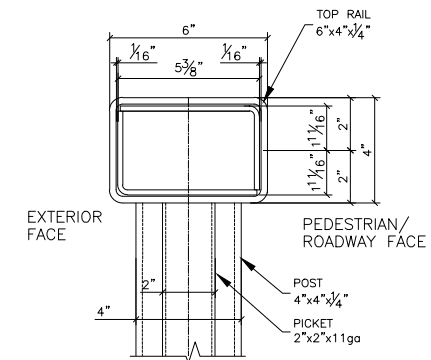




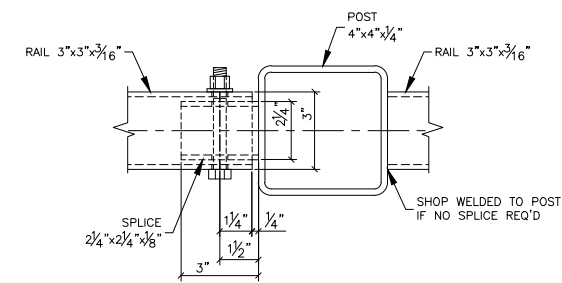
SPLICE DETAIL FOR WAVE PEDESTRIAN RAIL



SPLICE DETAIL ARCHED PANELS  
TYPICAL & OPP HAND SIMILAR



SECTION A-A  
TYPICAL & OPP HAND SIMILAR



SECTION B-B  
TYPICAL & OPP HAND SIMILAR

## ADDENDUM TO APPROVED PLANS

**RELEASED FOR  
CONSTRUCTION**  
As Noted on Plans Review

Development Services Department  
Lee's Summit, Missouri  
01/28/2022



APPROVER/REVIEW AUTHORITY  
PLEASE REVIEW THIS DRAWING CAREFULLY

THIS DRAWING REPRESENTS OUR INTERPRETATION OF THE CONTRACT DOCUMENTS. HOWEVER, THE STEEL FABRICATOR AND THE STRUCTURAL STEEL DETAILER ASSUME NO RESPONSIBILITY FOR THE ACCURACY OF THE INFORMATION SHOWN ON THE CONTRACT DOCUMENTS, ARCHITECTURAL AND STRUCTURAL DESIGN DRAWINGS. THIS IS THE RESPONSIBILITY OF THE BUYER. UNLESS NOTED TO THE CONTRARY, ON THIS DRAWING WHEN IT IS RETURNED FROM THE APPROVAL PROCESS IT WILL BE ASSUMED THAT ALL INFORMATION SHOWN HEREIN HAS THE AFFIRMATION OF THE APPROVAL AUTHORITY. SUBSEQUENT CHANGES TO THE INFORMATION SHOWN ON THIS DRAWING AFTER THE FIRST SUBMISSION WILL BE CONSIDERED AS CONTRACT CHANGES AND ARE SUBJECT TO ADDITIONAL COST.

REVISION			
NO.	DATE	DESCRIPTION	RVSD BY
1	11-11-21	FOR APPROVAL	WM
2			
3			
4			
5			
6			
7			



**SHAWNEE STEEL  
& WELDING INC.**

6124 MERRIAM DRIVE  
MERRIAM, KANSAS 66203  
(913) 432-8046

PROJECT: PARAGON STAR WEST BRIDGE @ SPORTS COMPLEX  
LOCATION: VIEW HIGH DR., VIEW HIGH PKWY, RIVER RD., LEE SUMMIT, MO  
PROJECT #12720.62  
ARCHITECT: CRAIG DEROY ROGGE - MO # A-905244  
CUSTOMER: -  
SUBJECT: WEST BRIDGE ELEVATION/DETAIL VIEW

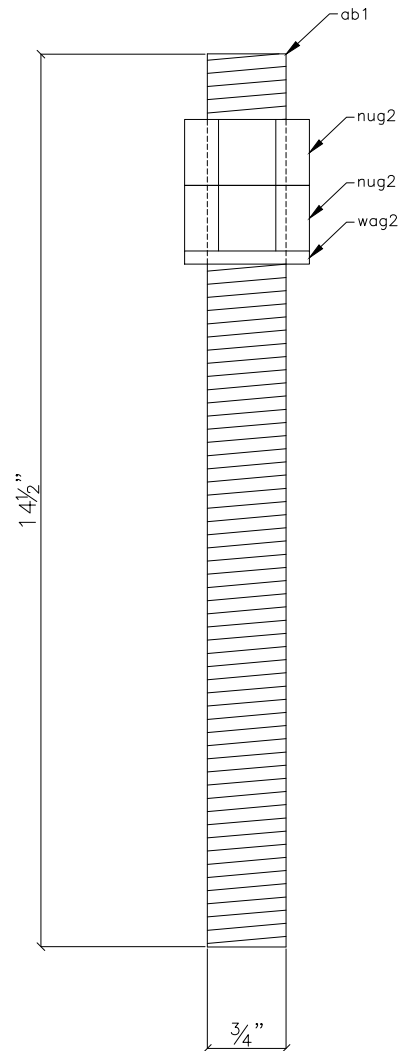
REVISION	DRAWN BY	JOB NO.	DWG. NO.
A	WM CHECKED BY WS	21-0042	WE4



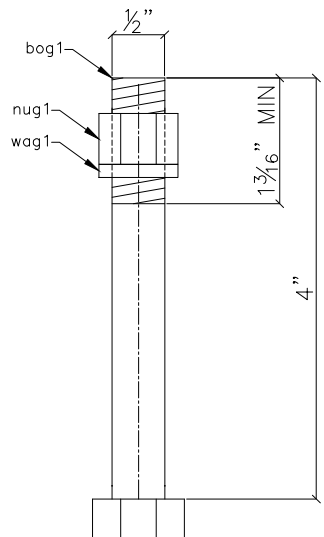
# ADDENDUM TO APPROVED PLANS

RELEASED FOR  
CONSTRUCTION  
As Noted on Plans Review

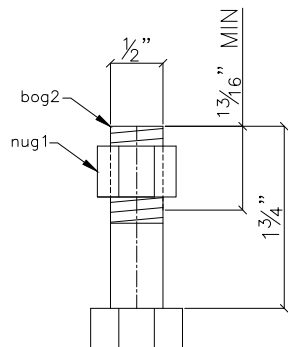
Development Services Department  
Lee's Summit, Missouri  
01/28/2022



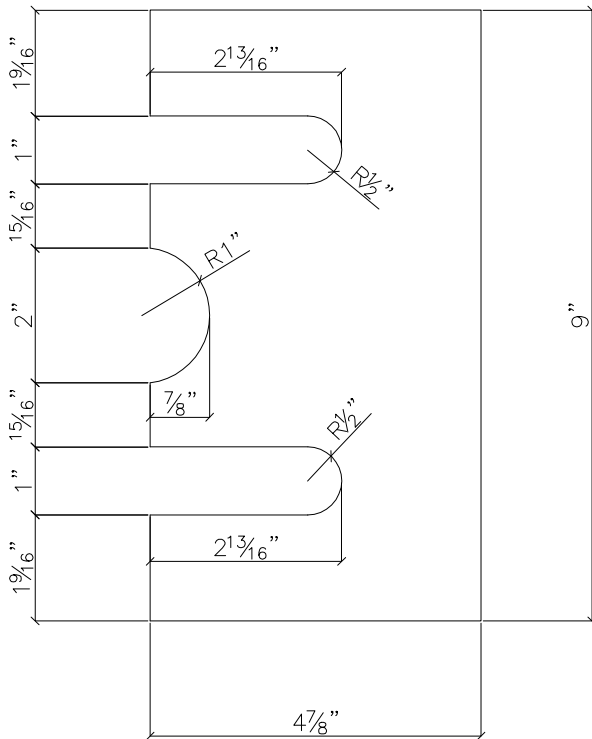
288 - AB1  
576 - NUG2  
288 - WAG2



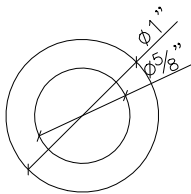
24 - BOG1  
24 - NUG1  
24 - WAG1



7 - BOG2  
7 - NUG1



158 - SH1 (1/16" TH.)  
158 - SH2 (1/8" TH.)



7 - PLW1

## BILL OF MATERIAL

DWG#	MARK	PIECE MARK	QTY.	SHAPE	DESCRIPTION	LENGTH	GRADE	REMARKS
FB1	AB1	AB1	288	ASA	ALL THREAD ANCHORS	14 1/2"		
FB1	AB1	ab1	288	ATRD	3/4 DIA ALL THREAD	14 1/2"	A449	
FB1	NUG2	NUG2	576	ASA	3/4 NUT			
FB1	NUG2	nug2	576	NUG	3/4 NUT		A563	
FB1	WAG2	WAG2	288	ASA	3/4 WASHER			
FB1	WAG2	wag2	288	WAG	3/4 WASHER		F436	
FB1	BOG1	BOG1	24	ASA	1/2 DIA BOLT	4"		
FB1	BOG1	bog1	24	BOG	1/2 DIA BOLT	4"	A325	
FB1	NUG1	NUG1	31	ASA	1/2 NUT			
FB1	NUG1	nug1	31	NUG	1/2 NUT		A563	
FB1	WAG1	WAG1	24	ASA	1/2 WASHER			
FB1	WAG1	wag1	24	WAG	1/2 WASHER		F436	
FB1	BOG2	BOG2	7	ASA	1/2 DIA BOLT	1 3/4"		
FB1	BOG2	bog2	7	BOG	1/2 DIA BOLT	1 3/4"	A325	
FB1	PLW1	PLW1	7	ASA	PLATE WASHER	1"		
FB1	PLW1	plw1	7	ATRD	1/8 X 1	1"	A36	ROUND
FB1	SH1	SH1	158	ASA	SHIM	9"		
FB1	SH1	sh1	158	PL	1/8 X 4 7/8	9"	A36	
FB1	SH2	SH2	158	ASA	SHIM	9"		
FB1	SH2	sh2	158	PL	1/16 X 4 7/8	9"	A36	

APPROVER/REVIEW AUTHORITY  
PLEASE REVIEW THIS DRAWING CAREFULLY

THIS DRAWING REPRESENTS OUR INTERPRETATION OF THE CONTRACT DOCUMENTS. HOWEVER, THE STEEL FABRICATOR AND THE STRUCTURAL STEEL DETAILER ASSUME NO RESPONSIBILITY FOR THE ACCURACY OF THE INFORMATION SHOWN ON THE CONTRACT DOCUMENTS, ARCHITECTURAL AND STRUCTURAL DESIGN DRAWINGS. THIS IS THE RESPONSIBILITY OF THE BUYER. UNLESS NOTED TO THE CONTRARY, ON THIS DRAWING WHEN IT IS RETURNED FROM THE APPROVAL PROCESS IT WILL BE ASSUMED THAT ALL INFORMATION SHOWN HEREIN HAS THE AFFIRMATION OF THE APPROVAL AUTHORITY. SUBSEQUENT CHANGES TO THE INFORMATION SHOWN ON THIS DRAWING AFTER THE FIRST SUBMISSION WILL BE CONSIDERED AS CONTRACT CHANGES AND ARE SUBJECT TO ADDITIONAL COST.

REVISION			
NO.	DATE	DESCRIPTION	RVSD BY
△	11-11-21	FOR APPROVAL	WM
△			
△			
△			
△			
△			
△			
△			
△			
INSPECTION		INSPECTION	
FABRICATION		WELDING	
IN HOUSE		(OTHER)	
OUTSIDE		VISUAL	
		100 %	



**SHAWNEE STEEL  
& WELDING INC.**

6124 MERRIAM DRIVE  
MERRIAM, KANSAS 66203  
(913) 432-8046



PROJECT: PARAGON STAR WEST BRIDGE @ SPORTS COMPLEX  
LOCATION: VIEW HIGH DR., VIEW HIGH PKWY, RIVER RD., LEE SUMMIT, MO  
PROJECT #12720.62  
ARCHITECT: CRAIG DEROY ROGGE - MO # A-905244  
CUSTOMER: -  
SUBJECT: FIELD BOLTS

MATERIAL THIS SHEET: ☒ DELIVERED ☐ ERECTED FIELD BOLT LIST: FB1

FINISH: SEE F1 SHEET ERECTION DWG. REF: E DWGS

REVISION	DRAWN BY	WM	JOB NO.	DWG. NO.
A	CHECKED BY	WS	21-0042	FB1

FOR APPROVAL ONLY  
(NOT FOR FIELD USE)



# ADDENDUM TO APPROVED PLANS

## WEST & EAST BRIDGE PANELS & PEDESTRIAN RAIL FINISHING:

PRE-GALVANIZING CLEANING: SSPC-SP2

GALVANIZING: GALVANIZE PER ASTM A123.

AFTER GALVANIZING CLEANING: LUMPS/DRIPS, PROJECTIONS, GLOBULES, HEAVY DEPOSITES, BARE SPOTS, OR SURFACE IRREGULARITIES OF GALVANIZING ARE CONSIDERED UNACCEPTABLE DUE TO HEIGHTENED ASTHETICS & VISUAL QUALITIES REQUIRED.

PRE-PAINT PREP/CLEANING: THE SURFACE PREPARATION SHALL MEET THE REQUIREMENTS OF ASTM D6386.

PRIME COAT: EPOXY BASE COAT AT 2.0 - 6.0 mils DFT.

TOP COAT: URETHANE TOP COAT AT 3.0 - 6.0 mils DFT.


COLOR: BRIDGE PANELS AND PEDESTRIAN RAIL:  
BLACK - APPROVER TO PROVIDE COLOR NUMBER

FINISH/SHEEN: APPROVER TO SPECIFY "MATTE", "SATIN", "SEMI-GLOSS", OR "GLOSS"

RELEASED FOR  
CONSTRUCTION  
As Noted on Plans Review

Development Services Department  
Lee's Summit, Missouri  
01/28/2022



	FOR APPROVAL	12-6-21
PROJECT NAME PARAGON STAR WEST & EAST BRIDGE		
LOCATION LEE SUMMIT, MO		
CUSTOMER PARAGON STAR DEVELOPER		
PROJECT NO. 21-0042		
 <b>SHAWNEE STEEL &amp; WELDING INC.</b> 6124 MERRIAM DRIVE MERRIAM, KANSAS 66203 (913) 432-8046		
DATE 12-6-21		JOB No. 21-0042
DRAWN BY WM		DRG No. F1