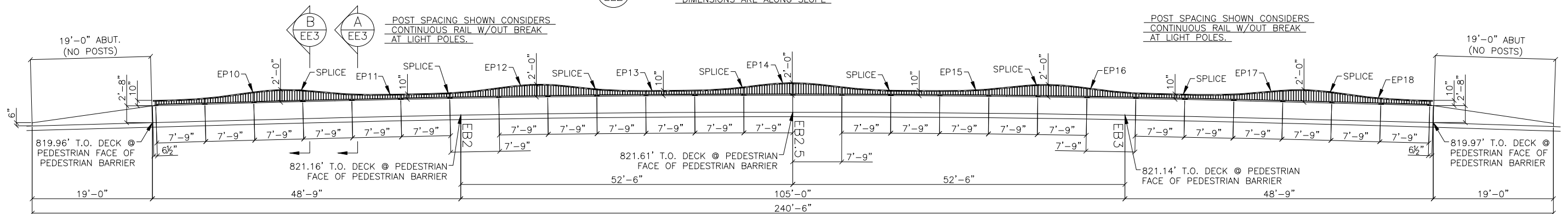
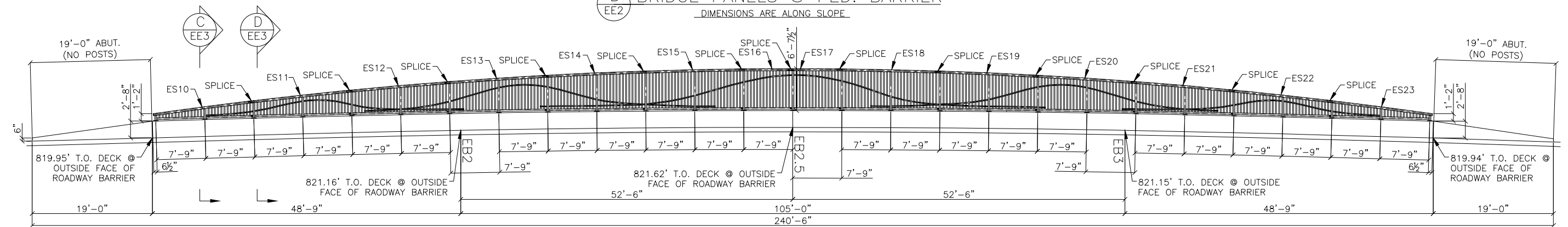


A BRIDGE PANELS @ CURB
DIMENSIONS ARE ALONG SLOPE



B BRIDGE PANELS @ PED. BARRIER
DIMENSIONS ARE ALONG SLOPE



C BRIDGE PANELS @ ROADWAY BARRIER
DIMENSIONS ARE ALONG SLOPE

ADDENDUM TO APPROVED PLANS

**RELEASED FOR
CONSTRUCTION**
As Noted on Plans Review

Development Services Department
Lee's Summit, Missouri
01/28/2022



APPROVER/REVIEW AUTHORITY
PLEASE REVIEW THIS DRAWING CAREFULLY

THIS DRAWING REPRESENTS OUR INTERPRETATION OF THE CONTRACT DOCUMENTS. HOWEVER, THE STEEL FABRICATOR AND THE STRUCTURAL STEEL DETAILER ASSUME NO RESPONSIBILITY FOR THE ACCURACY OF THE INFORMATION SHOWN ON THE CONTRACT DOCUMENTS, ARCHITECTURAL AND STRUCTURAL DESIGN DRAWINGS. THIS IS THE RESPONSIBILITY OF THE BUYER. UNLESS NOTED TO THE CONTRARY, ON THIS DRAWING WHEN IT IS RETURNED FROM THE APPROVAL PROCESS IT WILL BE ASSUMED THAT ALL INFORMATION SHOWN HEREIN HAS THE AFFIRMATION OF THE APPROVAL AUTHORITY. SUBSEQUENT CHANGES TO THE INFORMATION SHOWN ON THIS DRAWING AFTER THE FIRST SUBMISSION WILL BE CONSIDERED AS CONTRACT CHANGES AND ARE SUBJECT TO ADDITIONAL COST.

FOR APPROVAL ONLY
(NOT FOR FIELD USE)

REVISION			
NO.	DATE	DESCRIPTION	RVSD BY
1	12-1-21	FOR APPROVAL	WM
2	12-21-21	ADDED APPROACH RAILING @ NORTH CURB RAILING	WM
3			
4			
5			
6			
7			



**SHAWNEE STEEL
& WELDING INC.**

6124 MERRIAM DRIVE
MERRIAM, KANSAS 66203
(913) 432-8046

PROJECT: PARAGON STAR EAST BRIDGE @ LITTLE BLUE RIVER
LOCATION: VIEW HIGH DR., VIEW HIGH PKWY, RIVER RD., LEE SUMMIT, MO
PROJECT #12720.62
ARCHITECT: CRAIG DEROY ROGGE - MO # A-905244
CUSTOMER: -
SUBJECT: EAST BRIDGE ELEVATION VIEW

REVISION	DRAWN BY	JOB NO.	DWG. NO.
B	WM CHECKED BY WS	21-0042	EE2

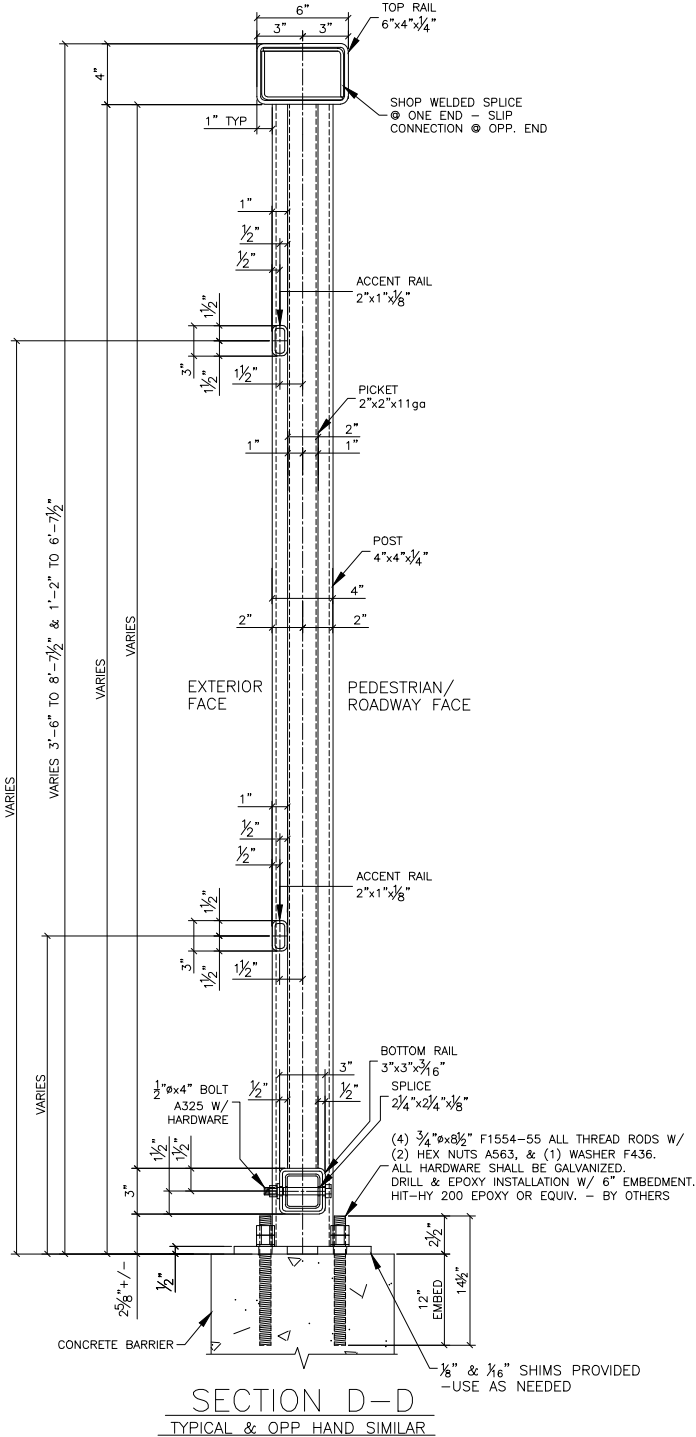
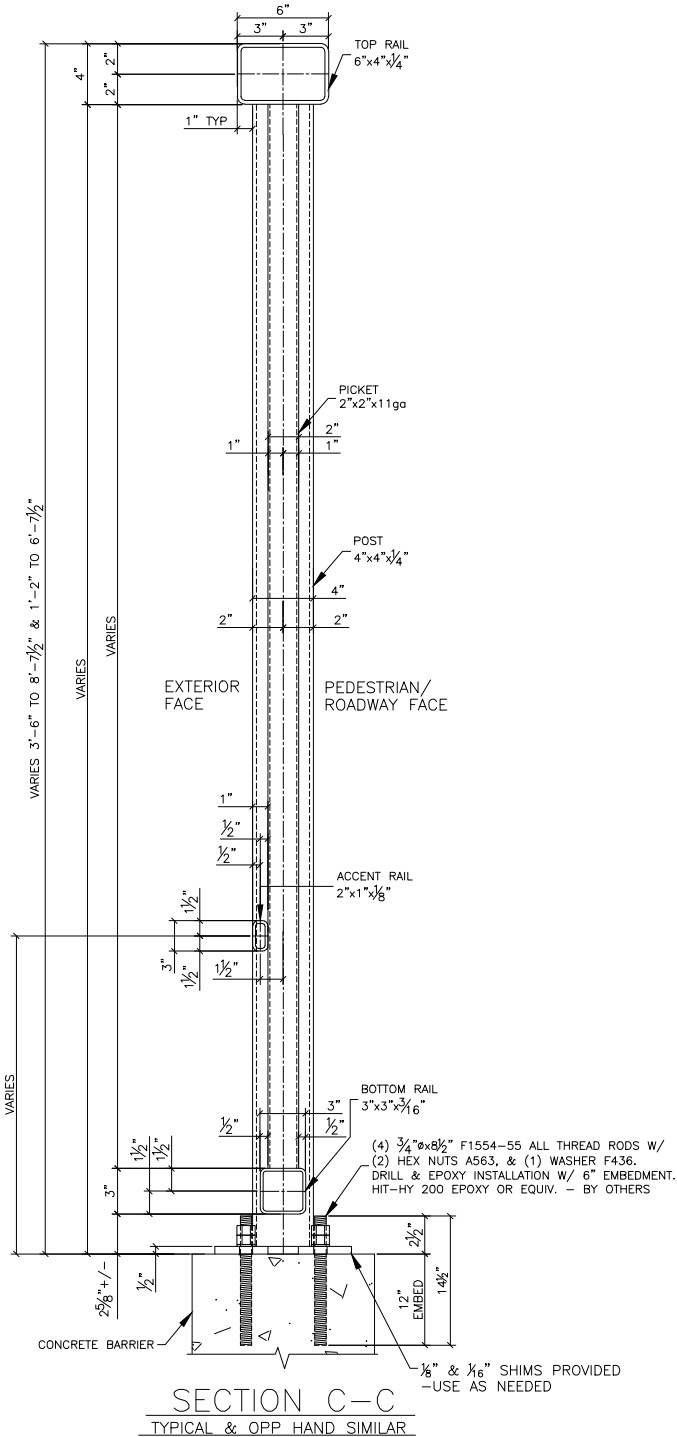
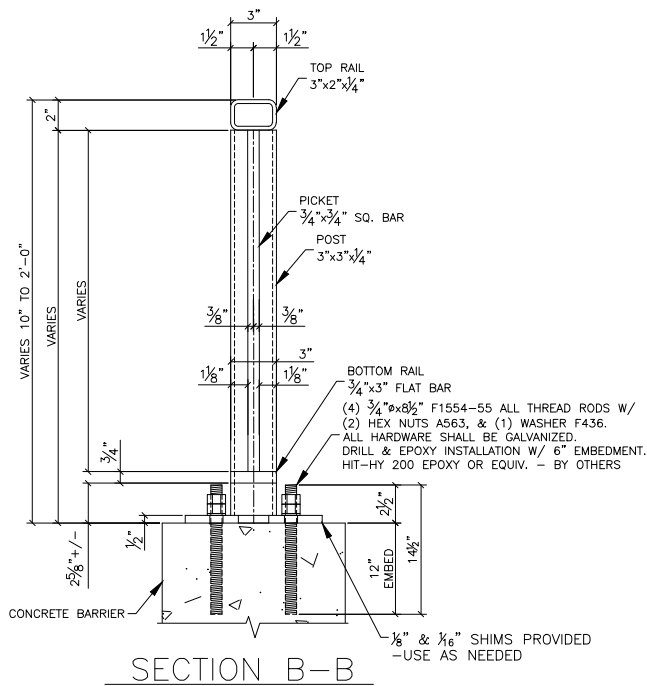
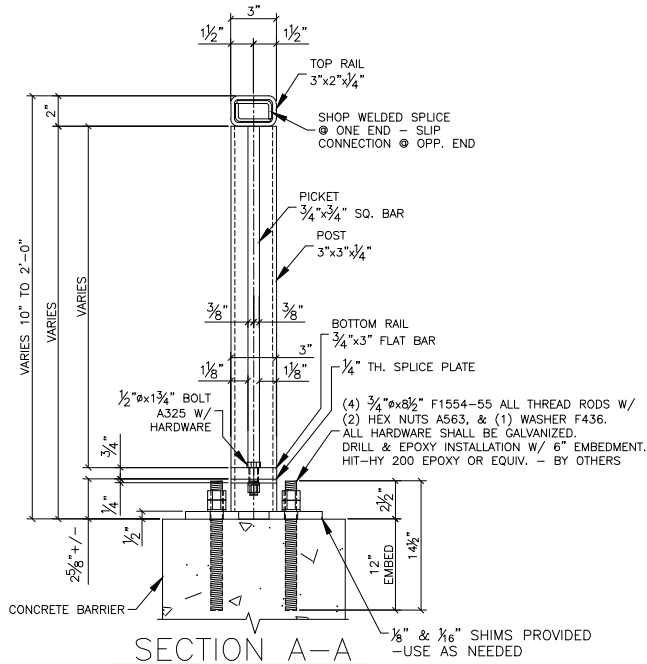
ADDENDUM TO APPROVED PLANS

RELEASED FOR
CONSTRUCTION
As Noted on Plans Review

Development Services Department
Lee's Summit, Missouri
01/28/2022

NOTE 1:
ALL VENT HOLES REQ'D FOR GALV.
ARE LOCATED ON THE EXTERIOR FACE.
HORIZONTAL RAILS VENT HOLES MAY
BE LOCATED ON BOTTOM FACE.

NOTE 2:
ACCENT RAILS ARE LOCATED ON THE
EXTERIOR FACE.-TYP



FOR APPROVAL ONLY
(NOT FOR FIELD USE)

APPROVER/REVIEW AUTHORITY
PLEASE REVIEW THIS DRAWING CAREFULLY

THIS DRAWING REPRESENTS OUR INTERPRETATION OF THE CONTRACT DOCUMENTS. HOWEVER, THE STEEL FABRICATOR AND THE STRUCTURAL STEEL DETAILER ASSUME NO RESPONSIBILITY FOR THE ACCURACY OF THE INFORMATION SHOWN ON THE CONTRACT DOCUMENTS, ARCHITECTURAL AND STRUCTURAL DESIGN DRAWINGS. THIS IS THE RESPONSIBILITY OF THE BUYER. UNLESS NOTED TO THE CONTRARY, ON THIS DRAWING WHEN IT IS RETURNED FROM THE APPROVAL PROCESS IT WILL BE ASSUMED THAT ALL INFORMATION SHOWN HEREIN HAS THE AFFIRMATION OF THE APPROVAL AUTHORITY. SUBSEQUENT CHANGES TO THE INFORMATION SHOWN ON THIS DRAWING AFTER THE FIRST SUBMISSION WILL BE CONSIDERED AS CONTRACT CHANGES AND ARE SUBJECT TO ADDITIONAL COST.

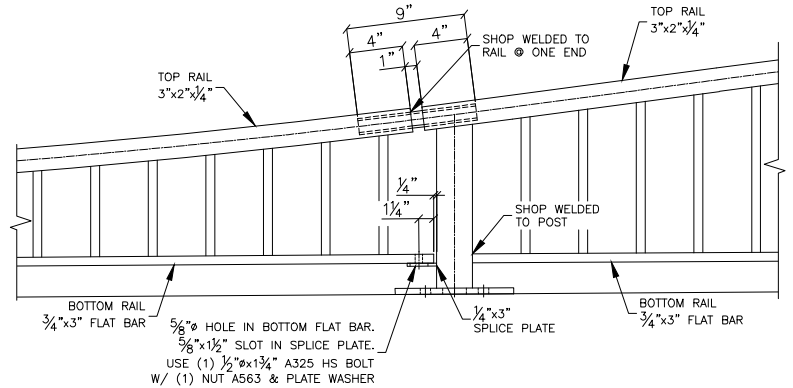
REVISION			
NO.	DATE	DESCRIPTION	BY
1	12-1-21	FOR APPROVAL	WM

SHAWNEE STEEL & WELDING INC.
6124 MERRIAM DRIVE
MERRIAM, KANSAS 66203
(913) 432-8046

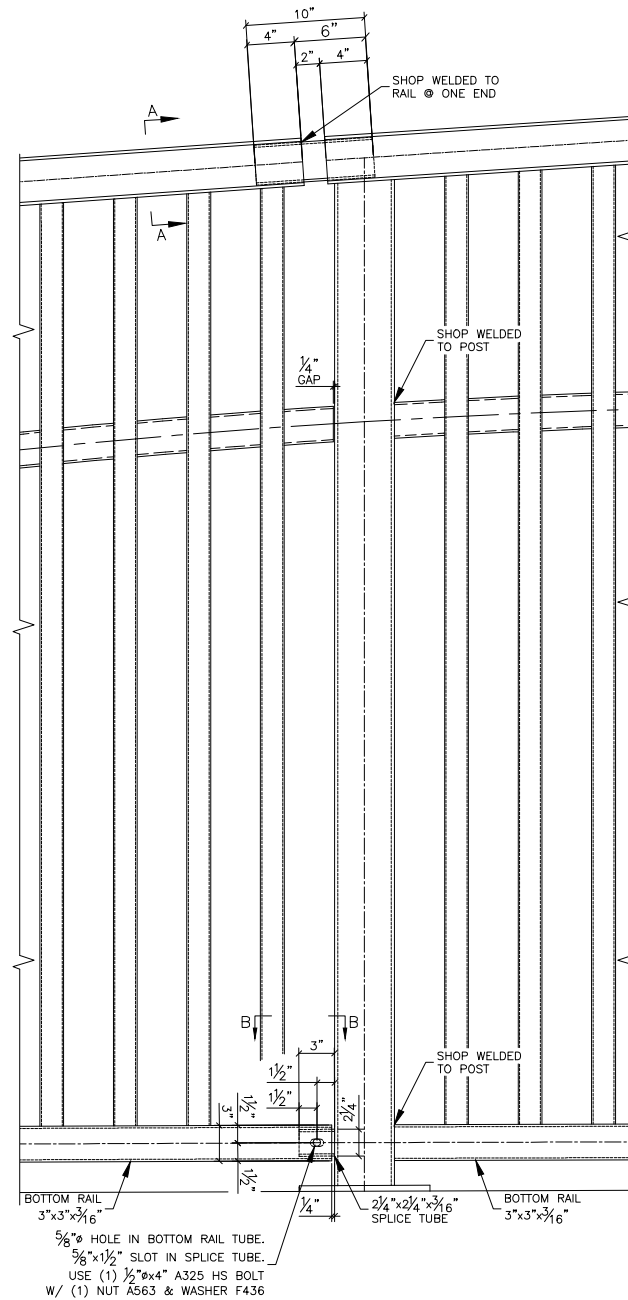
PROJECT: PARAGON STAR EAST BRIDGE @ LITTLE BLUE RIVER
LOCATION: VIEW HIGH DR., VIEW HIGH PKWY, RIVER RD., LEE SUMMIT, MO
PROJECT #12720.62
ARCHITECT: CRAIG DEROY ROGGE - MO # A-905244
CUSTOMER: -
SUBJECT: EAST BRIDGE ELEVATION/SECTION VIEW

REVISION	DRAWN BY	JOB NO.	DWG. NO.
A	WM	21-0042	EE3

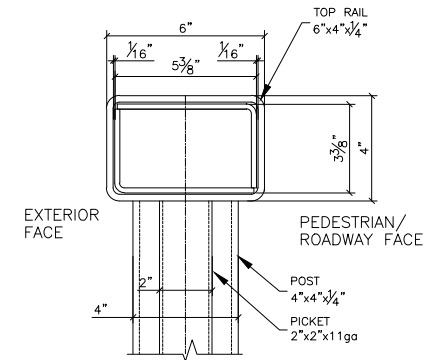
ADDENDUM TO APPROVED PLANS



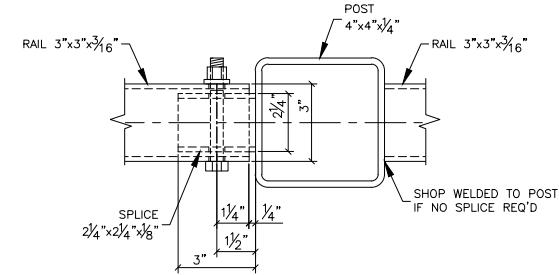
SPLICE DETAIL FOR WAVE PEDESTRIAN RAIL



SPLICE DETAIL ARCHED PANELS
TYPICAL & OPP HAND SIMILAR



SECTION A-A
TYPICAL & OPP HAND SIMILAR



SECTION B-B
TYPICAL & OPP HAND SIMILAR

FOR APPROVAL ONLY
(NOT FOR FIELD USE)

APPROVER/REVIEW AUTHORITY
PLEASE REVIEW THIS DRAWING CAREFULLY



THIS DRAWING REPRESENTS OUR INTERPRETATION OF THE CONTRACT DOCUMENTS. HOWEVER, THE STEEL FABRICATOR AND THE STRUCTURAL STEEL DETAILER ASSUME NO RESPONSIBILITY FOR THE ACCURACY OF THE INFORMATION SHOWN ON THE CONTRACT DOCUMENTS, ARCHITECTURAL AND STRUCTURAL DESIGN DRAWINGS. THIS IS THE RESPONSIBILITY OF THE BUYER. UNLESS NOTED TO THE CONTRARY, ON THIS DRAWING WHEN IT IS RETURNED FROM THE APPROVAL PROCESS IT WILL BE ASSUMED THAT ALL INFORMATION SHOWN HEREIN HAS THE AFFIRMATION OF THE APPROVAL AUTHORITY. SUBSEQUENT CHANGES TO THE INFORMATION SHOWN ON THIS DRAWING AFTER THE FIRST SUBMISSION WILL BE CONSIDERED AS CONTRACT CHANGES AND ARE SUBJECT TO ADDITIONAL COST.

REVISION			
NO.	DATE	DESCRIPTION	RVSD BY
△	12-1-21	FOR APPROVAL	WM
△			
△			
△			
△			
△			
△			



**SHAWNEE STEEL
& WELDING INC.**

6124 MERRIAM DRIVE
MERRIAM, KANSAS 66203
(913) 432-8046



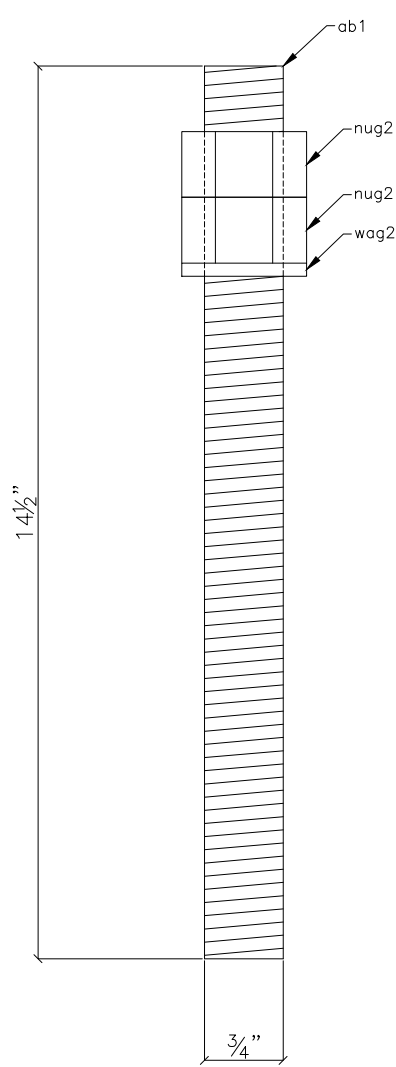
PROJECT: PARAGON STAR EAST BRIDGE @ LITTLE BLUE RIVER
LOCATION: VIEW HIGH DR., VIEW HIGH PKWY, RIVER RD., LEE SUMMIT, MO
PROJECT #12720.62
ARCHITECT: CRAIG DEROY ROGGE - MO # A-905244
CUSTOMER: -
SUBJECT: EAST BRIDGE ELEVATION/DETAIL VIEW

REVISION	DRAWN BY	JOB NO.	DWG. NO.
A	WM CHECKED BY WS	21-0042	EE4

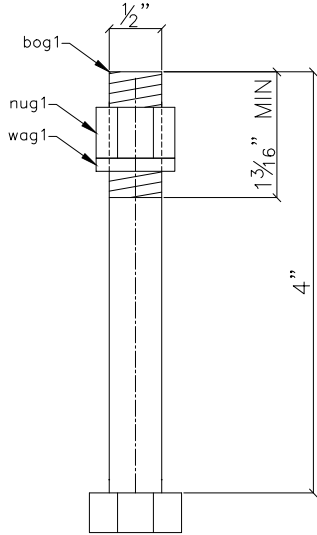
RELEASED FOR
CONSTRUCTION
As Noted on Plans Review

Development Services Department
Lee's Summit, Missouri
01/28/2022

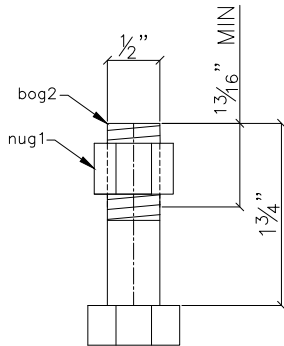
ADDENDUM TO APPROVED PLANS



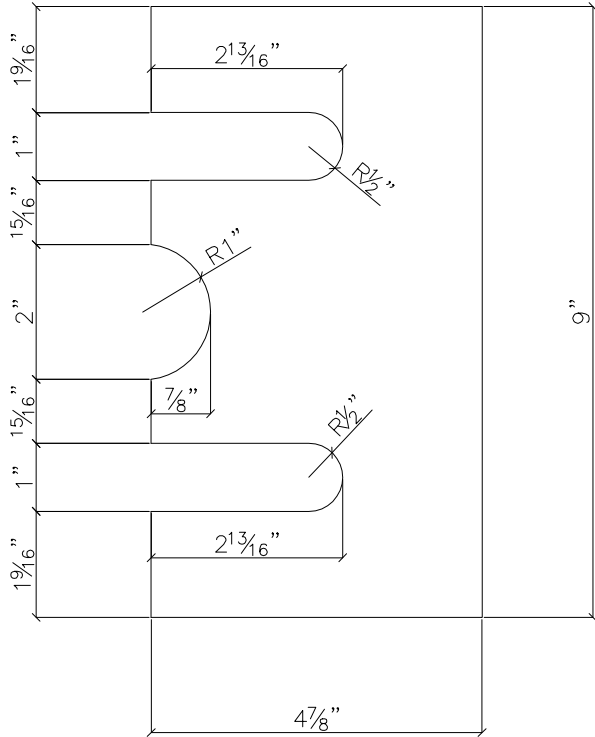
316 - AB1
632 - NUG2
316 - WAG2



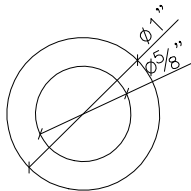
26 - BOG1
26 - NUG1
26 - WAG1



8 - BOG2
8 - NUG1



158 - SH1 (1/16" TH.)
158 - SH2 (1/8" TH.)



8 - PLW1

BILL OF MATERIAL								
DWG#	MARK	PIECE MARK	QTY.	SHAPE	DESCRIPTION	LENGTH	GRADE	REMARKS
FB2	AB1	AB1	316	ASA	ALL THREAD ANCHORS	14 1/2"		
FB2	AB1	ab1	316	ATRD	3/4 DIA ALL THREAD	14 1/2"	A449	
FB2	NUG2	NUG2	632	ASA	3/4 NUT			
FB2	NUG2	nug2	632	NUG	3/4 NUT		A563	
FB2	WAG2	WAG2	316	ASA	3/4 WASHER			
FB2	WAG2	wag2	316	WAG	3/4 WASHER		F436	
FB2	BOG1	BOG1	26	ASA	1/2 DIA BOLT	4"		
FB2	BOG1	bog1	26	BOG	1/2 DIA BOLT	4"	A325	
FB2	NUG1	NUG1	34	ASA	1/2 NUT			
FB2	NUG1	nug1	34	NUG	1/2 NUT		A563	
FB2	WAG1	WAG1	26	ASA	1/2 WASHER			
FB2	WAG1	wag1	26	WAG	1/2 WASHER		F436	
FB2	BOG2	BOG2	8	ASA	1/2 DIA BOLT	1 3/4"		
FB2	BOG2	bog2	8	BOG	1/2 DIA BOLT	1 3/4"	A325	
FB2	PLW1	PLW1	8	ASA	PLATE WASHER	1"		
FB2	PLW1	plw1	8	ATRD	1/8 X 1	1"	A36	ROUND
FB2	SH1	SH1	158	ASA	SHIM	9"		
FB2	SH1	sh1	158	PL	1/16 X 4 7/8	9"	A36	
FB2	SH2	SH2	158	ASA	SHIM	9"		
FB2	SH2	sh2	158	PL	1/8 X 4 7/8	9"	A36	

APPROVER/REVIEW AUTHORITY
PLEASE REVIEW THIS DRAWING CAREFULLY

THIS DRAWING REPRESENTS OUR INTERPRETATION OF THE CONTRACT DOCUMENTS. HOWEVER, THE STEEL FABRICATOR AND THE STRUCTURAL STEEL DETAILER ASSUME NO RESPONSIBILITY FOR THE ACCURACY OF THE INFORMATION SHOWN ON THE CONTRACT DOCUMENTS, ARCHITECTURAL AND STRUCTURAL DESIGN DRAWINGS. THIS IS THE RESPONSIBILITY OF THE BUYER. UNLESS NOTED TO THE CONTRARY, ON THIS DRAWING WHEN IT IS RETURNED FROM THE APPROVAL PROCESS IT WILL BE ASSUMED THAT ALL INFORMATION SHOWN HEREIN HAS THE AFFIRMATION OF THE APPROVAL AUTHORITY. SUBSEQUENT CHANGES TO THE INFORMATION SHOWN ON THIS DRAWING AFTER THE FIRST SUBMISSION WILL BE CONSIDERED AS CONTRACT CHANGES AND ARE SUBJECT TO ADDITIONAL COST.

REVISION			
NO.	DATE	DESCRIPTION	RVSD BY
△	12-1-21	FOR APPROVAL	WM
△			
△			
△			
△			
△			
△			

INSPECTION		INSPECTION	
FABRICATION		WELDING	
IN HOUSE	<input checked="" type="checkbox"/>	(OTHER)	%
OUTSIDE	<input type="checkbox"/>	VISUAL	100 %





**SHAWNEE STEEL
& WELDING INC.**
6124 MERRIAM DRIVE
MERRIAM, KANSAS 66203
(913) 432-8046

PROJECT: PARAGON STAR EAST BRIDGE @ LITTLE BLUE RIVER
LOCATION: VIEW HIGH DR., VIEW HIGH PKWY, RIVER RD., LEE SUMMIT, MO
PROJECT #12720.62
ARCHITECT: CRAIG DEROY ROGGE - MO # A-905244
CUSTOMER: -
SUBJECT: FIELD BOLTS

MATERIAL THIS SHEET: ☒ DELIVERED ☐ ERECTED

FIELD BOLT LIST: FB2

FINISH: SEE F1 SHEET

ERECTION DWG. REF: E DWGS

REVISION
A

DRAWN BY
WM
CHECKED BY
WS

JOB NO.
21-0042

DWG. NO.
FB2

FOR APPROVAL ONLY
(NOT FOR FIELD USE)

ADDENDUM TO APPROVED PLANS

WEST & EAST BRIDGE PANELS & PEDESTRIAN RAIL FINISHING:

PRE-GALVANIZING CLEANING: SSPC-SP2

GALVANIZING: GALVANIZE PER ASTM A123.

AFTER GALVANIZING CLEANING: LUMPS/DRIPS, PROJECTIONS, GLOBULES, HEAVY DEPOSITES, BARE SPOTS, OR SURFACE IRREGULARITIES OF GALVANIZING ARE CONSIDERED UNACCEPTABLE DUE TO HEIGHTENED ASTHETICS & VISUAL QUALITIES REQUIRED.

PRE-PAINT PREP/CLEANING: THE SURFACE PREPARATION SHALL MEET THE REQUIREMENTS OF ASTM D6386.

PRIME COAT: EPOXY BASE COAT AT 2.0 - 6.0 mils DFT.

TOP COAT: URETHANE TOP COAT AT 3.0 - 6.0 mils DFT.


COLOR: BRIDGE PANELS AND PEDESTRIAN RAIL:
BLACK - APPROVER TO PROVIDE COLOR NUMBER

FINISH/SHEEN: APPROVER TO SPECIFY "MATTE", "SATIN", "SEMI-GLOSS", OR "GLOSS"

**RELEASED FOR
CONSTRUCTION**
As Noted on Plans Review

Development Services Department
Lee's Summit, Missouri
01/28/2022



	FOR APPROVAL	12-6-21
PROJECT NAME PARAGON STAR WEST & EAST BRIDGE		
LOCATION LEE SUMMIT, MO		
CUSTOMER PARAGON STAR DEVELOPER		
PROJECT NO. 21-0042		
 SHAWNEE STEEL & WELDING INC. 6124 MERRIAM DRIVE MERRIAM, KANSAS 66203 (913) 432-8046		
DATE 12-6-21		JOB No. 21-0042
DRAWN BY WM		DRG No. F1