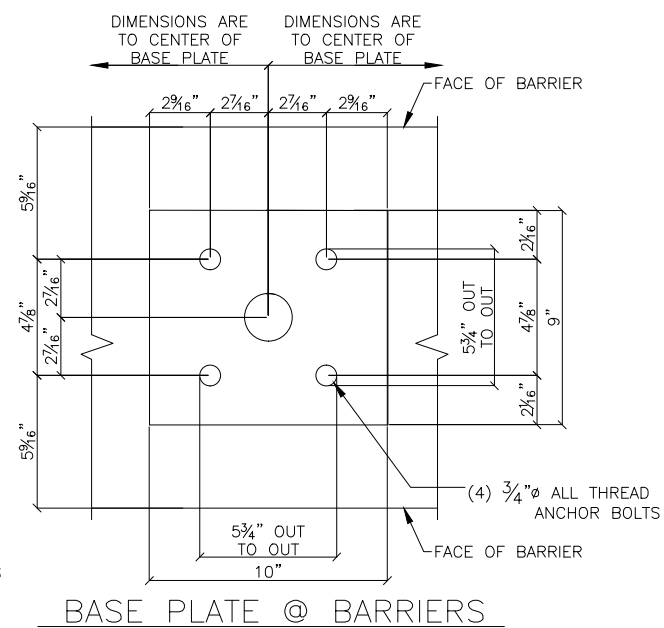
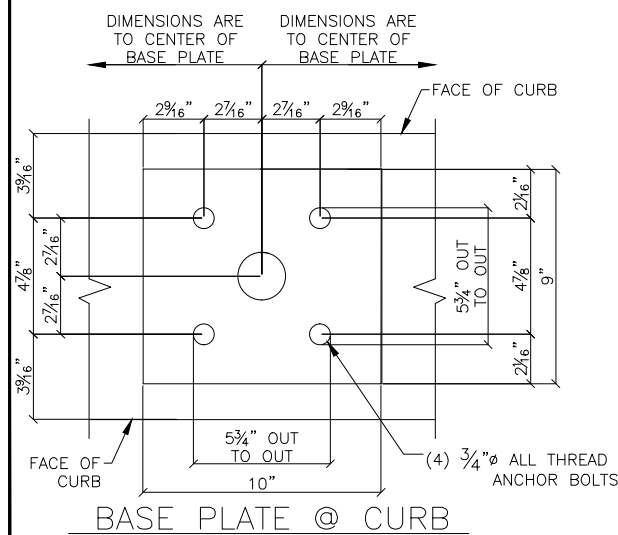


WEST BRIDGE PLAN VIEW

DIMENSIONS ARE IN PLAN VIEW



THE SEAL AFFIXED TO THESE DRAWINGS (WE1, WE2, WE3, WE4, FB1, F1) ATTESTS ONLY TO THE DESIGN AND ANCHORAGE OF THE PEDESTRIAN GUARDRAIL. DESIGN OF THE BASE BRIDGE STRUCTURE IS THE RESPONSIBILITY OF OTHERS



APPROVER/REVIEW AUTHORITY
PLEASE REVIEW THIS DRAWING CAREFULLY

THIS DRAWING REPRESENTS OUR INTERPRETATION OF THE CONTRACT DOCUMENTS. HOWEVER, THE STEEL FABRICATOR AND THE STRUCTURAL STEEL DETAILER ASSUME NO RESPONSIBILITY FOR THE ACCURACY OF THE INFORMATION SHOWN ON THE CONTRACT DOCUMENTS, ARCHITECTURAL AND STRUCTURAL DESIGN DRAWINGS. THIS IS THE RESPONSIBILITY OF THE BUYER. UNLESS NOTED TO THE CONTRARY, ON THIS DRAWING WHEN IT IS RETURNED FROM THE APPROVAL PROCESS IT WILL BE ASSUMED THAT ALL INFORMATION SHOWN HEREIN HAS THE AFFIRMATION OF THE APPROVAL AUTHORITY. SUBSEQUENT CHANGES TO THE INFORMATION SHOWN ON THIS DRAWING AFTER THE FIRST SUBMISSION WILL BE CONSIDERED AS CONTRACT CHANGES AND ARE SUBJECT TO ADDITIONAL COST.

REVISION			
NO.	DATE	DESCRIPTION	RVSD BY
1	11-11-21	FOR APPROVAL	WM
2	12-21-21	ADDED APPROACH RAILING @ NORTH CURB RAILING	WM

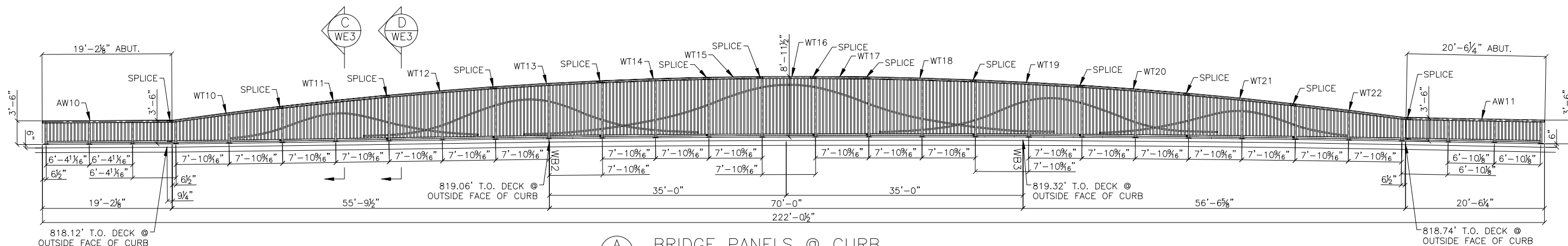


**SHAWNEE STEEL
& WELDING INC.**

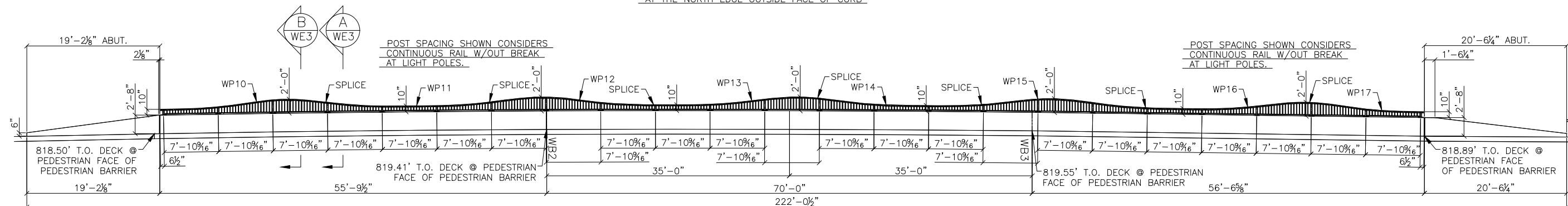
6124 MERRIAM DRIVE
MERRIAM, KANSAS 66203
(913) 432-8046

PROJECT: PARAGON STAR WEST BRIDGE @ SPORTS COMPLEX
LOCATION: VIEW HIGH DR., VIEW HIGH PKWY, RIVER RD., LEE SUMMIT, MO
PROJECT #12720.62
ARCHITECT: CRAIG DEROY ROGGE - MO # A-905244
CUSTOMER: -
SUBJECT: WEST BRIDGE PLAN VIEW

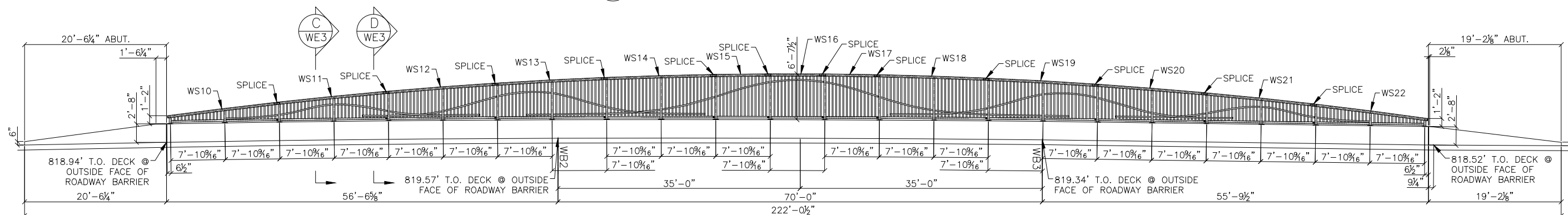
REVISION	DRAWN BY	JOB NO.	DWG. NO.
B	WM CHECKED BY WS	21-0042	WE1



A BRIDGE PANELS @ CURB
DIMENSIONS ARE ALONG SLOPE
AT THE NORTH EDGE OUTSIDE FACE OF CURB



B BRIDGE PANELS @ PED. BARRIER
DIMENSIONS ARE ALONG SLOPE



C BRIDGE PANELS @ ROADWAY BARRIER
DIMENSIONS ARE ALONG SLOPE

FOR APPROVAL ONLY
(NOT FOR FIELD USE)



APPROVER/REVIEW AUTHORITY
PLEASE REVIEW THIS DRAWING CAREFULLY

THIS DRAWING REPRESENTS OUR INTERPRETATION OF THE CONTRACT DOCUMENTS. HOWEVER, THE STEEL FABRICATOR AND THE STRUCTURAL STEEL DETAILER ASSUME NO RESPONSIBILITY FOR THE ACCURACY OF THE INFORMATION SHOWN ON THE CONTRACT DOCUMENTS, ARCHITECTURAL AND STRUCTURAL DESIGN DRAWINGS. THIS IS THE RESPONSIBILITY OF THE BUYER. UNLESS NOTED TO THE CONTRARY, ON THIS DRAWING WHEN IT IS RETURNED FROM THE APPROVAL PROCESS IT WILL BE ASSUMED THAT ALL INFORMATION SHOWN HEREIN HAS THE AFFIRMATION OF THE APPROVAL AUTHORITY. SUBSEQUENT CHANGES TO THE INFORMATION SHOWN ON THIS DRAWING AFTER THE FIRST SUBMISSION WILL BE CONSIDERED AS CONTRACT CHANGES AND ARE SUBJECT TO ADDITIONAL COST.

REVISION			
NO.	DATE	DESCRIPTION	RVSD BY
11-11-21	FOR APPROVAL		WM
12-21-21	ADDED APPROACH RAILING @ NORTH CURB RAILING		WM

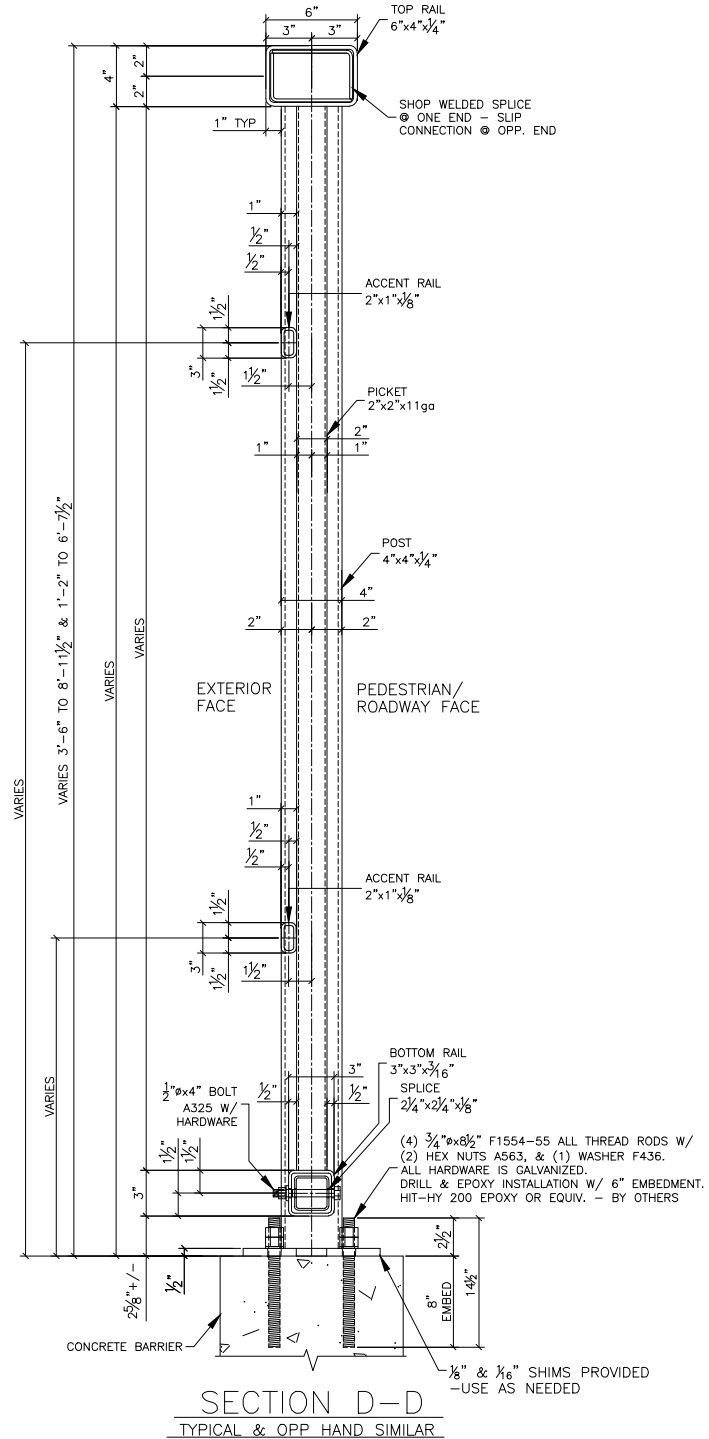
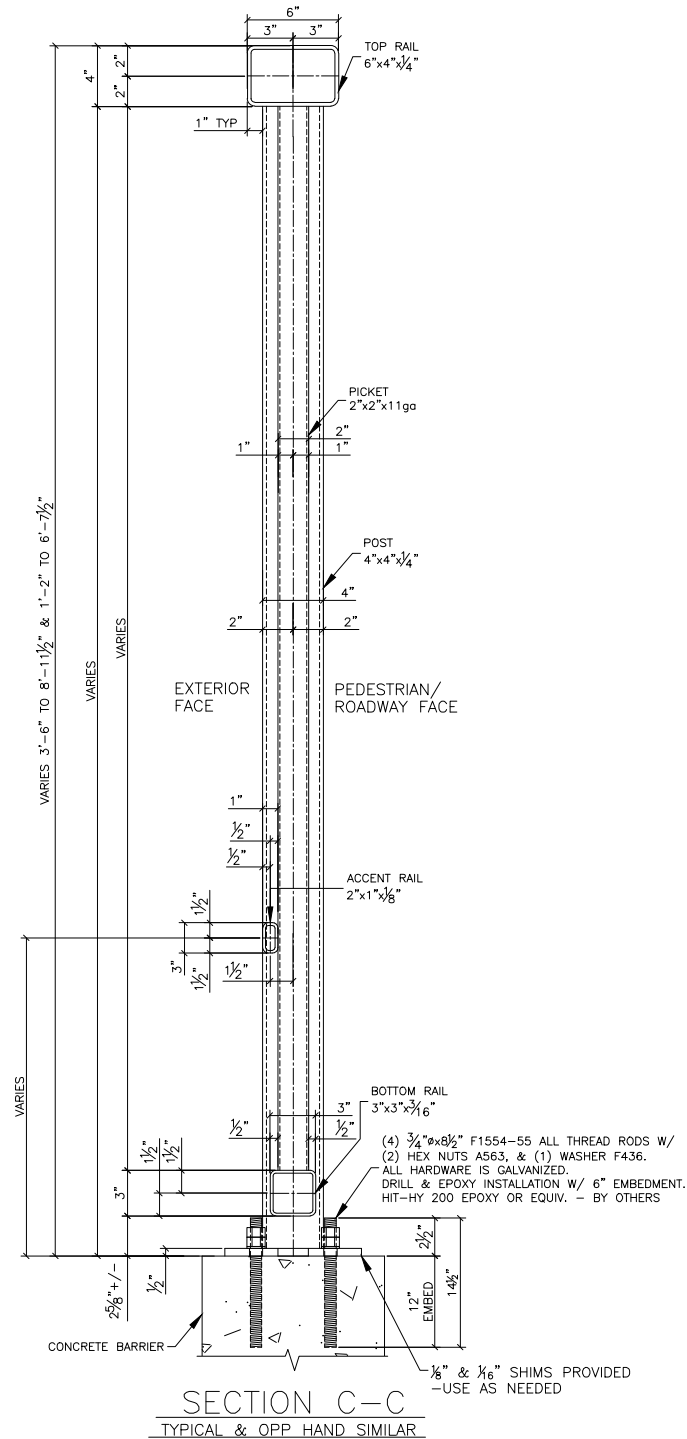
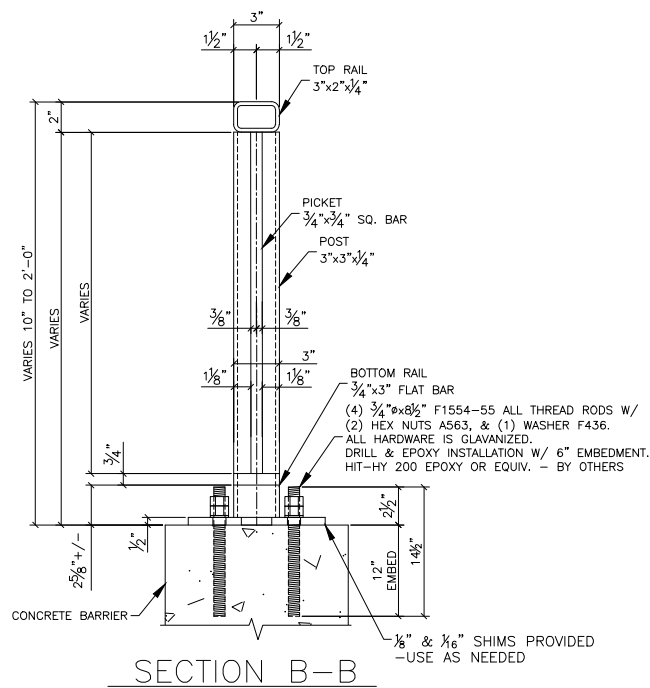
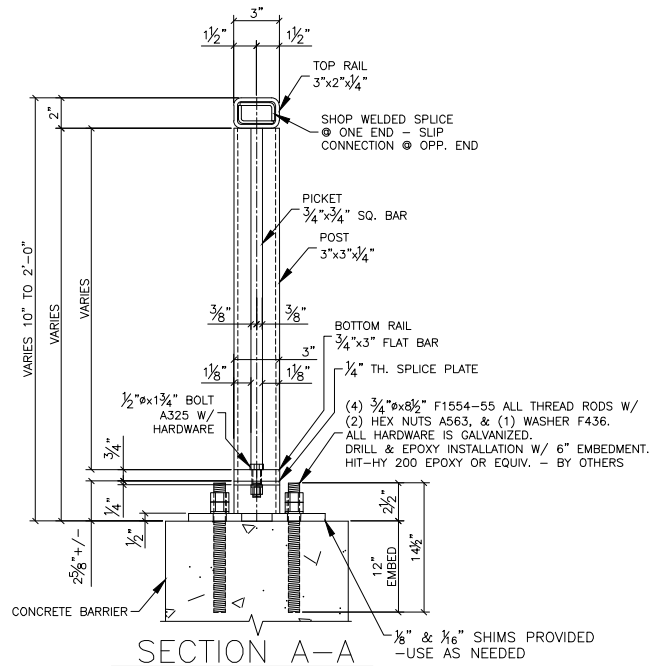


**SHAWNEE STEEL
& WELDING INC.**

6124 MERRIAM DRIVE
MERRIAM, KANSAS 66203
(913) 432-8046

PROJECT: PARAGON STAR WEST BRIDGE @ SPORTS COMPLEX
LOCATION: VIEW HIGH DR., VIEW HIGH PKWY, RIVER RD., LEE SUMMIT, MO
PROJECT #12720.62
ARCHITECT: CRAIG DEROY ROGGE - MO # A-905244
CUSTOMER: -
SUBJECT: WEST BRIDGE ELEVATION VIEW

REVISION	DRAWN BY	JOB NO.	DWG. NO.
B	WM CHECKED BY WS	21-0042	WE2



NOTE 1:
ALL VENT HOLES REQ'D FOR GALV.
ARE LOCATED ON THE EXTERIOR FACE.
HORIZONTAL RAILS VENT HOLES MAY
BE LOCATED ON BOTTOM FACE.

NOTE 2:
ACCENT RAILS ARE LOCATED ON THE
EXTERIOR FACE.-TYP




FOR APPROVAL ONLY
(NOT FOR FIELD USE)

APPROVER/REVIEW AUTHORITY
PLEASE REVIEW THIS DRAWING CAREFULLY

THIS DRAWING REPRESENTS OUR INTERPRETATION OF THE CONTRACT DOCUMENTS. HOWEVER, THE STEEL FABRICATOR AND THE STRUCTURAL STEEL DETAILER ASSUME NO RESPONSIBILITY FOR THE ACCURACY OF THE INFORMATION SHOWN ON THE CONTRACT DOCUMENTS, ARCHITECTURAL AND STRUCTURAL DESIGN DRAWINGS. THIS IS THE RESPONSIBILITY OF THE BUYER. UNLESS NOTED TO THE CONTRARY, ON THIS DRAWING WHEN IT IS RETURNED FROM THE APPROVAL PROCESS IT WILL BE ASSUMED THAT ALL INFORMATION SHOWN HEREIN HAS THE AFFIRMATION OF THE APPROVAL AUTHORITY. SUBSEQUENT CHANGES TO THE INFORMATION SHOWN ON THIS DRAWING AFTER THE FIRST SUBMISSION WILL BE CONSIDERED AS CONTRACT CHANGES AND ARE SUBJECT TO ADDITIONAL COST.

REVISION			
NO.	DATE	DESCRIPTION	BYSD BY
1	11-11-21	FOR APPROVAL	WM
2			
3			
4			
5			
6			
7			
8			

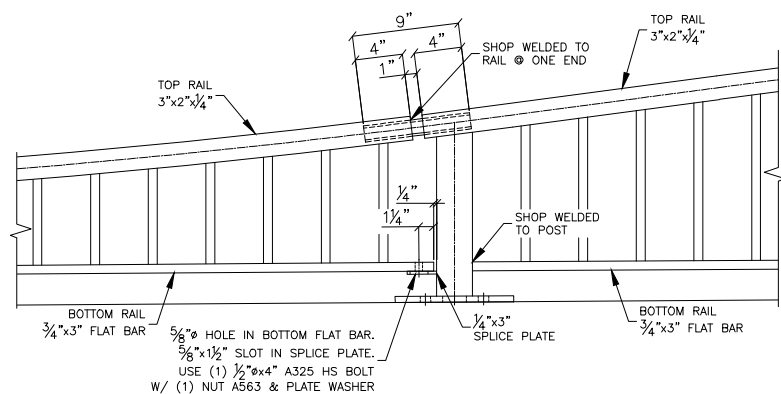


**SHAWNEE STEEL
& WELDING INC.**

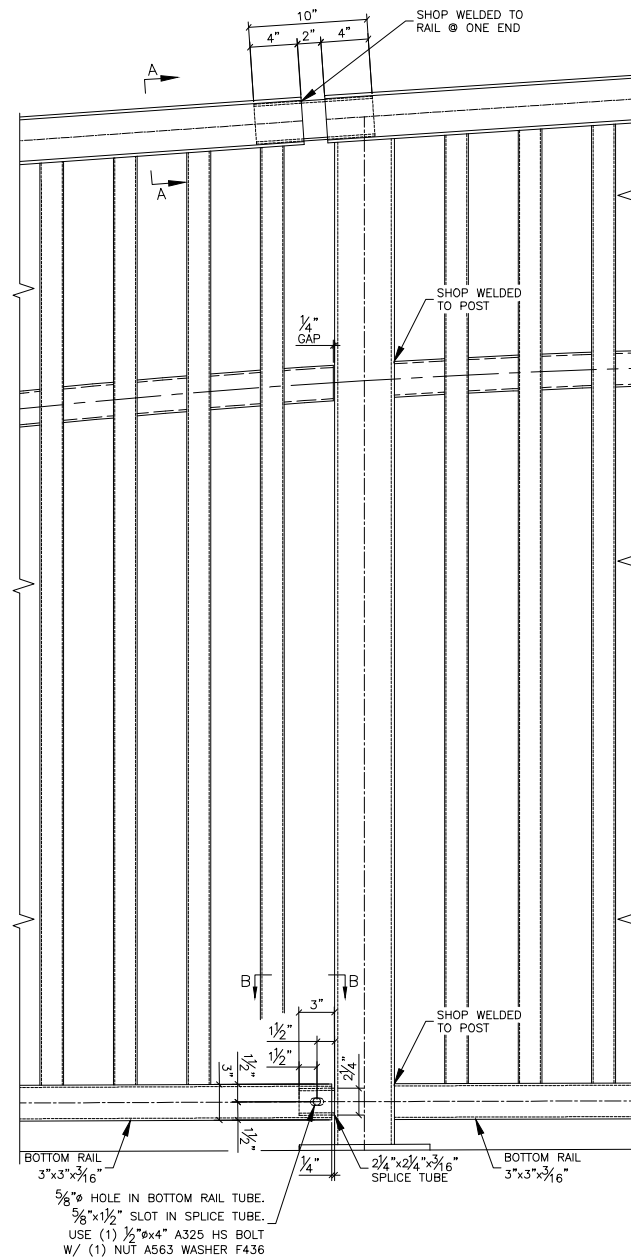
6124 MERRIAM DRIVE
MERRIAM, KANSAS 66203
(913) 432-8046

PROJECT: PARAGON STAR WEST BRIDGE @ SPORTS COMPLEX
LOCATION: VIEW HIGH DR., VIEW HIGH PKWY, RIVER RD., LEE SUMMIT, MO
PROJECT #12720.62
ARCHITECT: CRAIG DEROY ROGGE - MO # A-905244
CUSTOMER: -
SUBJECT: WEST BRIDGE ELEVATION/SECTION VIEW

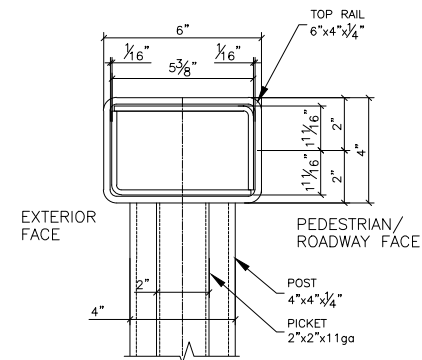
REVISION A	DRAWN BY WM CHECKED BY WS	JOB NO. 21-0042	DWG. NO. WE3
---------------	------------------------------------	--------------------	-----------------



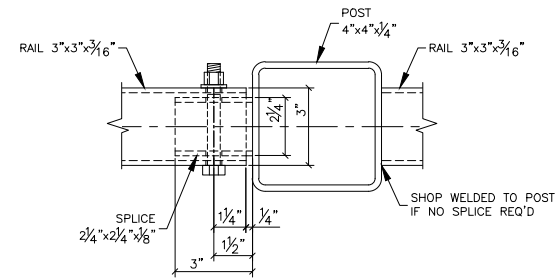
SPLICE DETAIL FOR WAVE PEDESTRIAN RAIL



SPLICE DETAIL ARCHED PANELS
TYPICAL & OPP HAND SIMILAR



SECTION A-A
TYPICAL & OPP HAND SIMILAR



SECTION B-B
TYPICAL & OPP HAND SIMILAR

FOR APPROVAL ONLY
(NOT FOR FIELD USE)

APPROVER/REVIEW AUTHORITY
PLEASE REVIEW THIS DRAWING CAREFULLY

THIS DRAWING REPRESENTS OUR INTERPRETATION OF THE CONTRACT DOCUMENTS. HOWEVER, THE STEEL FABRICATOR AND THE STRUCTURAL STEEL DETAILER ASSUME NO RESPONSIBILITY FOR THE ACCURACY OF THE INFORMATION SHOWN ON THE CONTRACT DOCUMENTS, ARCHITECTURAL AND STRUCTURAL DESIGN DRAWINGS. THIS IS THE RESPONSIBILITY OF THE BUYER. UNLESS NOTED TO THE CONTRARY, ON THIS DRAWING WHEN IT IS RETURNED FROM THE APPROVAL PROCESS IT WILL BE ASSUMED THAT ALL INFORMATION SHOWN HEREIN HAS THE AFFIRMATION OF THE APPROVAL AUTHORITY. SUBSEQUENT CHANGES TO THE INFORMATION SHOWN ON THIS DRAWING AFTER THE FIRST SUBMISSION WILL BE CONSIDERED AS CONTRACT CHANGES AND ARE SUBJECT TO ADDITIONAL COST.

REVISION			
NO.	DATE	DESCRIPTION	RVSD BY
1	11-11-21	FOR APPROVAL	WM
2			
3			
4			
5			
6			
7			



**SHAWNEE STEEL
& WELDING INC.**

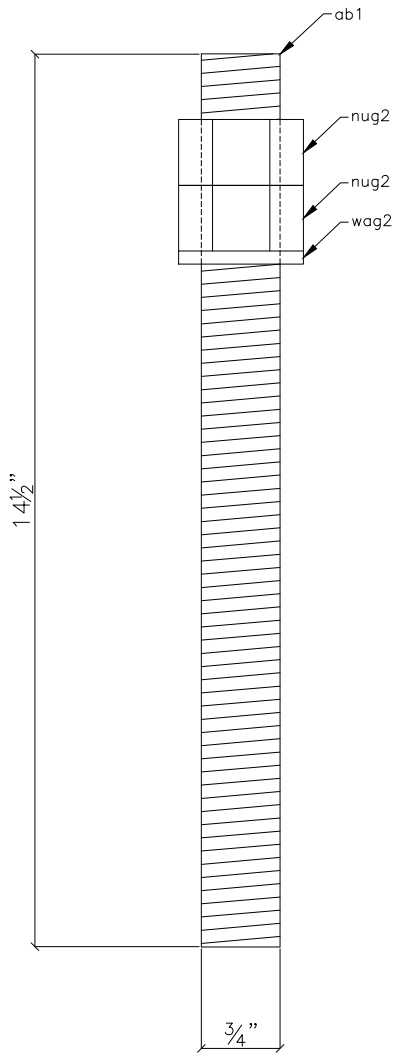
6124 MERRIAM DRIVE
MERRIAM, KANSAS 66203
(913) 432-8046



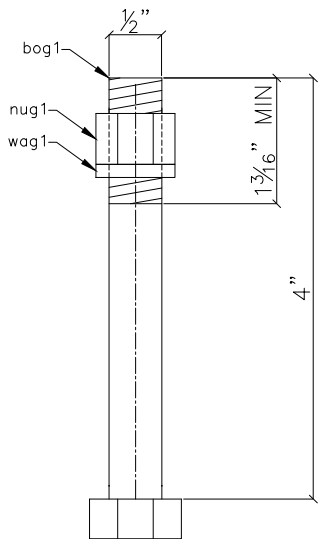
PROJECT: PARAGON STAR WEST BRIDGE @ SPORTS COMPLEX
LOCATION: VIEW HIGH DR., VIEW HIGH PKWY, RIVER RD., LEE SUMMIT, MO
PROJECT #12720.62
ARCHITECT: CRAIG DEROY ROGGE - MO # A-905244
CUSTOMER: -
SUBJECT: WEST BRIDGE ELEVATION/DETAIL VIEW

REVISION	DRAWN BY	JOB NO.	DWG. NO.
A	WM	21-0042	WE4
	CHECKED BY		
	WS		

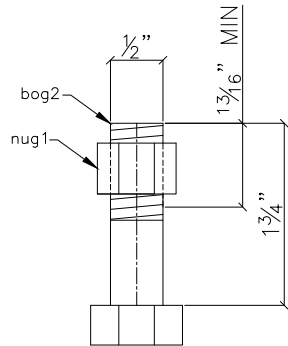




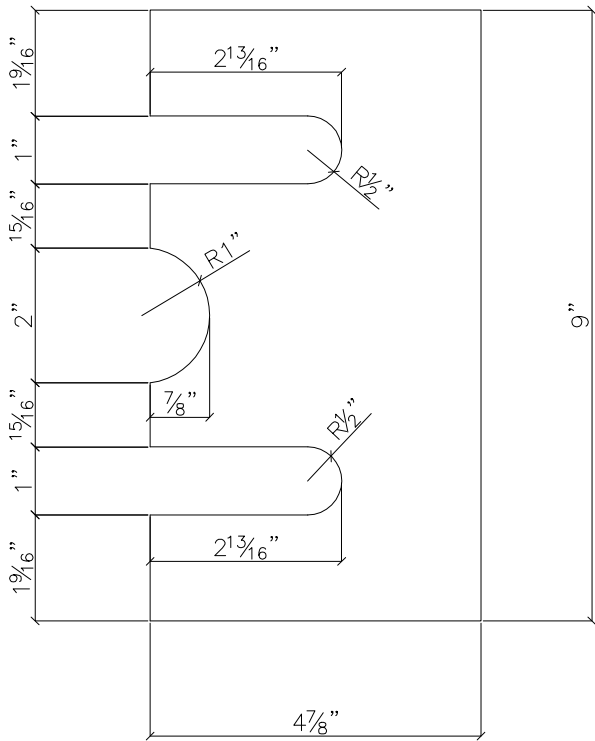
- 288 – AB1
- 576 – NUG2
- 288 – WAG2



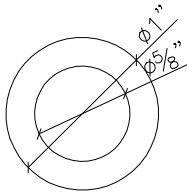
- 24 – BOG1
- 24 – NUG1
- 24 – WAG1



- 7 – BOG2
- 7 – NUG1



- 158 – SH1 (1/16" TH.)
- 158 – SH2 (1/8" TH.)



- 7 – PLW1

BILL OF MATERIAL								
DWG#	MARK	PIECE MARK	QTY.	SHAPE	DESCRIPTION	LENGTH	GRADE	REMARKS
FB1	AB1	AB1	288	ASA	ALL THREAD ANCHORS	14 1/2"		
FB1	AB1	ab1	288	ATRD	3/4 DIA ALL THREAD	14 1/2"	A449	
FB1	NUG2	NUG2	576	ASA	3/4 NUT			
FB1	NUG2	nug2	576	NUG	3/4 NUT		A563	
FB1	WAG2	WAG2	288	ASA	3/4 WASHER			
FB1	WAG2	wag2	288	WAG	3/4 WASHER		F436	
FB1	BOG1	BOG1	24	ASA	1/2 DIA BOLT	4"		
FB1	BOG1	bog1	24	BOG	1/2 DIA BOLT	4"	A325	
FB1	NUG1	NUG1	31	ASA	1/2 NUT			
FB1	NUG1	nug1	31	NUG	1/2 NUT		A563	
FB1	WAG1	WAG1	24	ASA	1/2 WASHER			
FB1	WAG1	wag1	24	WAG	1/2 WASHER		F436	
FB1	BOG2	BOG2	7	ASA	1/2 DIA BOLT	1 3/4"		
FB1	BOG2	bog2	7	BOG	1/2 DIA BOLT	1 3/4"	A325	
FB1	PLW1	PLW1	7	ASA	PLATE WASHER	1"		
FB1	PLW1	plw1	7	ATRD	1/8 X 1	1"	A36	ROUND
FB1	SH1	SH1	158	ASA	SHIM	9"		
FB1	SH1	sh1	158	PL	1/8 X 4 7/8	9"	A36	
FB1	SH2	SH2	158	ASA	SHIM	9"		
FB1	SH2	sh2	158	PL	1/16 X 4 7/8	9"	A36	

APPROVER/REVIEW AUTHORITY
PLEASE REVIEW THIS DRAWING CAREFULLY

THIS DRAWING REPRESENTS OUR INTERPRETATION OF THE CONTRACT DOCUMENTS. HOWEVER, THE STEEL FABRICATOR AND THE STRUCTURAL STEEL DETAILER ASSUME NO RESPONSIBILITY FOR THE ACCURACY OF THE INFORMATION SHOWN ON THE CONTRACT DOCUMENTS, ARCHITECTURAL AND STRUCTURAL DESIGN DRAWINGS. THIS IS THE RESPONSIBILITY OF THE BUYER. UNLESS NOTED TO THE CONTRARY, ON THIS DRAWING WHEN IT IS RETURNED FROM THE APPROVAL PROCESS IT WILL BE ASSUMED THAT ALL INFORMATION SHOWN HEREIN HAS THE AFFIRMATION OF THE APPROVAL AUTHORITY. SUBSEQUENT CHANGES TO THE INFORMATION SHOWN ON THIS DRAWING AFTER THE FIRST SUBMISSION WILL BE CONSIDERED AS CONTRACT CHANGES AND ARE SUBJECT TO ADDITIONAL COST.

REVISION			
NO.	DATE	DESCRIPTION	RVSD BY
△	11-11-21	FOR APPROVAL	WM
△			
△			
△			
△			
△			
△			
△			
INSPECTION		INSPECTION	
FABRICATION		WELDING (OTHER) _____ %	
IN HOUSE _____		VISUAL _____ 100 % _____ %	
OUTSIDE _____			





**SHAWNEE STEEL
& WELDING INC.**
6124 MERRIAM DRIVE
MERRIAM, KANSAS 66203
(913) 432-8046



PROJECT: PARAGON STAR WEST BRIDGE @ SPORTS COMPLEX
LOCATION: VIEW HIGH DR., VIEW HIGH PKWY, RIVER RD., LEE SUMMIT, MO
PROJECT #12720.62
ARCHITECT: CRAIG DEROY ROGGE – MO # A-905244
CUSTOMER: –
SUBJECT: FIELD BOLTS

MATERIAL THIS SHEET: ☒ DELIVERED ☐ ERECTED

FIELD BOLT LIST: FB1

FINISH: SEE F1 SHEET

ERECTION DWG. REF: E DWGS

REVISION
A

DRAWN BY WM
CHECKED BY WS

JOB NO.
21-0042

DWG. NO.
FB1

FOR APPROVAL ONLY
(NOT FOR FIELD USE)

WEST & EAST BRIDGE PANELS & PEDESTRIAN RAIL FINISHING:

PRE-GALVANIZING CLEANING: SSPC-SP2

GALVANIZING: GALVANIZE PER ASTM A123.

AFTER GALVANIZING CLEANING: LUMPS/DRIPS, PROJECTIONS, GLOBULES, HEAVY DEPOSITES, BARE SPOTS, OR SURFACE IRREGULARITIES OF GALVANIZING ARE CONSIDERED UNACCEPTABLE DUE TO HEIGHTENED ASTHETICS & VISUAL QUALITIES REQUIRED.

PRE-PAINT PREP/CLEANING: THE SURFACE PREPARATION SHALL MEET THE REQUIREMENTS OF ASTM D6386.




PRIME COAT: EPOXY BASE COAT AT 2.0 - 6.0 mils DFT.

TOP COAT: URETHANE TOP COAT AT 3.0 - 6.0 mils DFT.

COLOR: BRIDGE PANELS AND PEDESTRIAN RAIL:
BLACK - APPROVER TO PROVIDE COLOR NUMBER

FINISH/SHEEN: APPROVER TO SPECIFY "MATTE", "SATIN", "SEMI-GLOSS", OR "GLOSS"



	FOR APPROVAL	12-6-21
		
PROJECT NAME PARAGON STAR WEST & EAST BRIDGE		
LOCATION LEE SUMMIT, MO		
CUSTOMER PARAGON STAR DEVELOPER		
PROJECT NO. 21-0042		
		
SHAWNEE STEEL & WELDING INC.		
6124 MERRIAM DRIVE MERRIAM, KANSAS 66203 (913) 432-8046		
DESCRIPTION BRIDGE PANEL & RAIL FINISHING		DATE 12-6-21
		JOB No. 21-0042
		DRAWN BY WM
		DRG No. F1