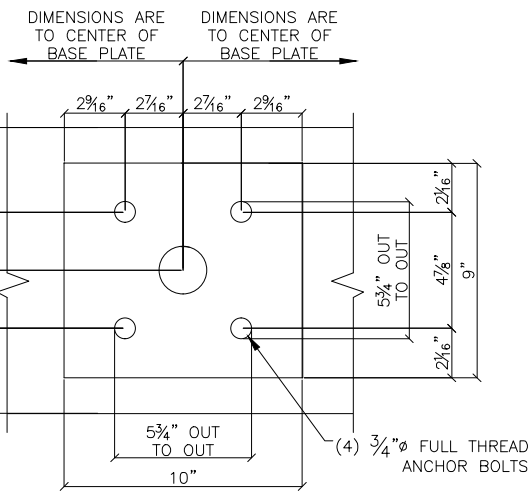
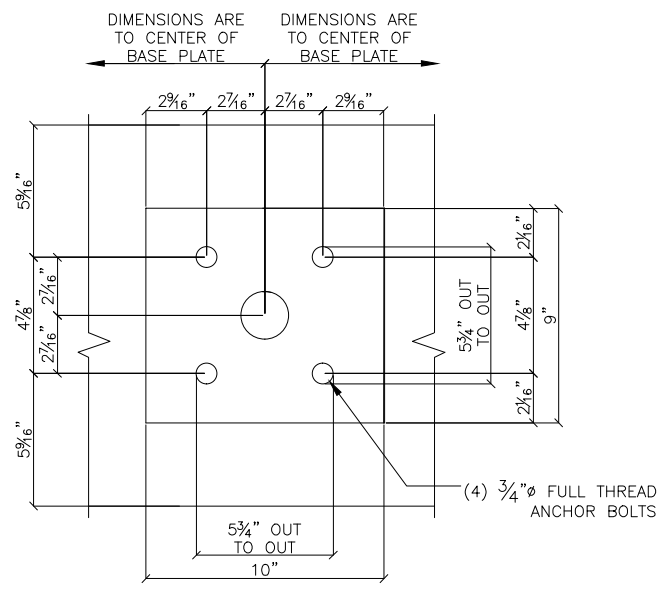


EAST BRIDGE PLAN VIEW

DIMENSIONS ARE IN PLAN VIEW



BASE PLATE @ CURB



BASE PLATE @ BARRIERS

THE SEAL AFFIXED TO THESE DRAWINGS (EE1, EE2, EE3, EE4, FB1, F1) ATTESTS ONLY TO THE DESIGN AND ANCHORAGE OF THE PEDESTRIAN GUARDRAIL. DESIGN OF THE BASE BRIDGE STRUCTURE IS THE RESPONSIBILITY OF OTHERS



FOR APPROVAL ONLY
(NOT FOR FIELD USE)

APPROVER/REVIEW AUTHORITY
PLEASE REVIEW THIS DRAWING CAREFULLY

THIS DRAWING REPRESENTS OUR INTERPRETATION OF THE CONTRACT DOCUMENTS. HOWEVER, THE STEEL FABRICATOR AND THE STRUCTURAL STEEL DETAILER ASSUME NO RESPONSIBILITY FOR THE ACCURACY OF THE INFORMATION SHOWN ON THE CONTRACT DOCUMENTS, ARCHITECTURAL AND STRUCTURAL DESIGN DRAWINGS. THIS IS THE RESPONSIBILITY OF THE BUYER. UNLESS NOTED TO THE CONTRARY, ON THIS DRAWING WHEN IT IS RETURNED FROM THE APPROVAL PROCESS IT WILL BE ASSUMED THAT ALL INFORMATION SHOWN HEREIN HAS THE AFFIRMATION OF THE APPROVAL AUTHORITY. SUBSEQUENT CHANGES TO THE INFORMATION SHOWN ON THIS DRAWING AFTER THE FIRST SUBMISSION WILL BE CONSIDERED AS CONTRACT CHANGES AND ARE SUBJECT TO ADDITIONAL COST.

REVISION			
NO.	DATE	DESCRIPTION	RVSD BY
1	12-1-21	FOR APPROVAL	WM
2	12-21-21	ADDED APPROACH RAILING @ NORTH CURB RAILING	WM



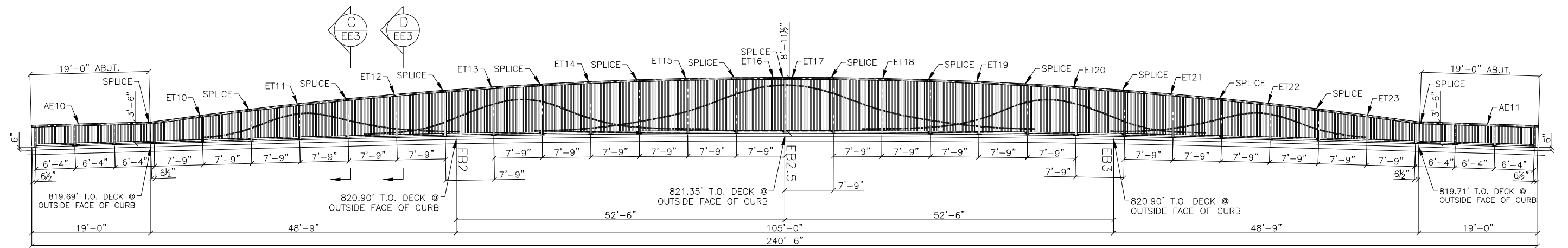
**SHAWNEE STEEL
& WELDING INC.**

6124 MERRIAM DRIVE
MERRIAM, KANSAS 66203
(913) 432-8046

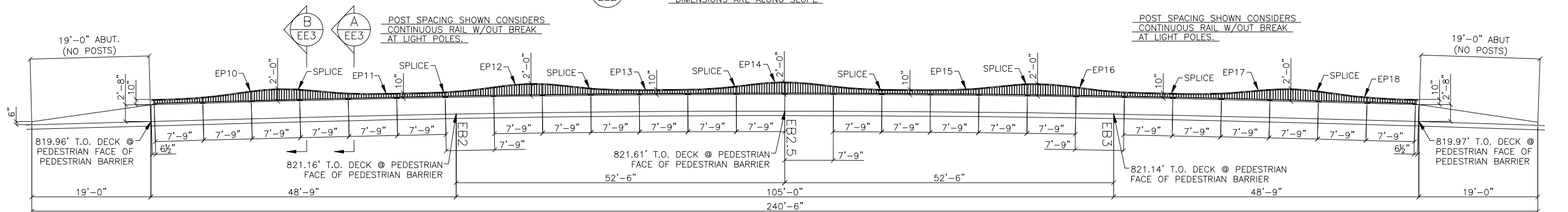


PROJECT: PARAGON STAR EAST BRIDGE @ LITTLE BLUE RIVER
LOCATION: VIEW HIGH DR., VIEW HIGH PKWY, RIVER RD., LEE SUMMIT, MO
PROJECT #12720.62
ARCHITECT: CRAIG DEROY ROGGE - MO # A-905244
CUSTOMER: -
SUBJECT: EAST BRIDGE PLAN VIEW

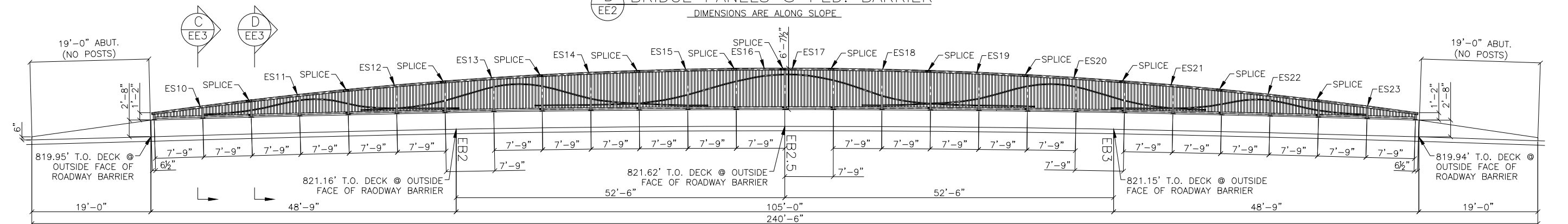
REVISION	DRAWN BY	JOB NO.	DWG. NO.
B	WM CHECKED BY WS	21-0042	EE1



A BRIDGE PANELS @ CURB
DIMENSIONS ARE ALONG SLOPE



B BRIDGE PANELS @ PED. BARRIER
DIMENSIONS ARE ALONG SLOPE



C BRIDGE PANELS @ ROADWAY BARRIER
DIMENSIONS ARE ALONG SLOPE

FOR APPROVAL ONLY
(NOT FOR FIELD USE)



APPROVER/REVIEW AUTHORITY
PLEASE REVIEW THIS DRAWING CAREFULLY

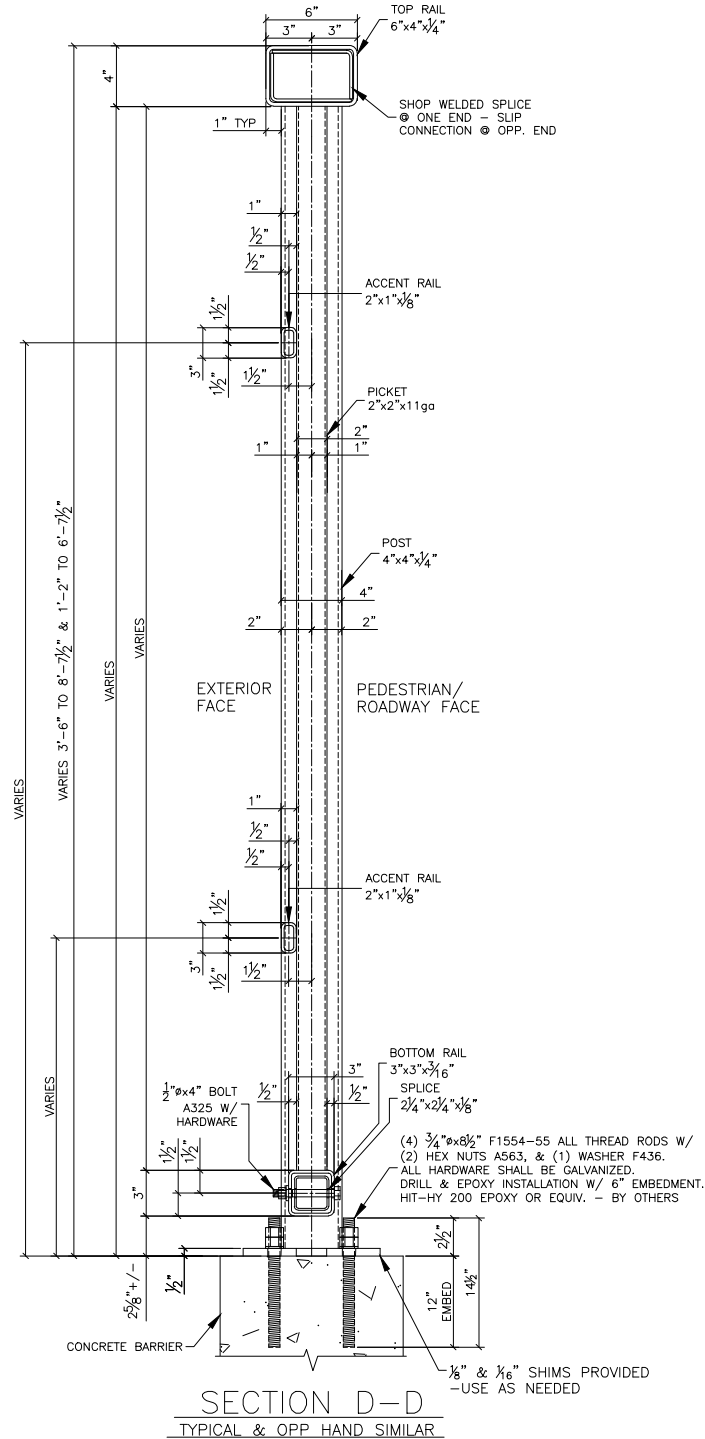
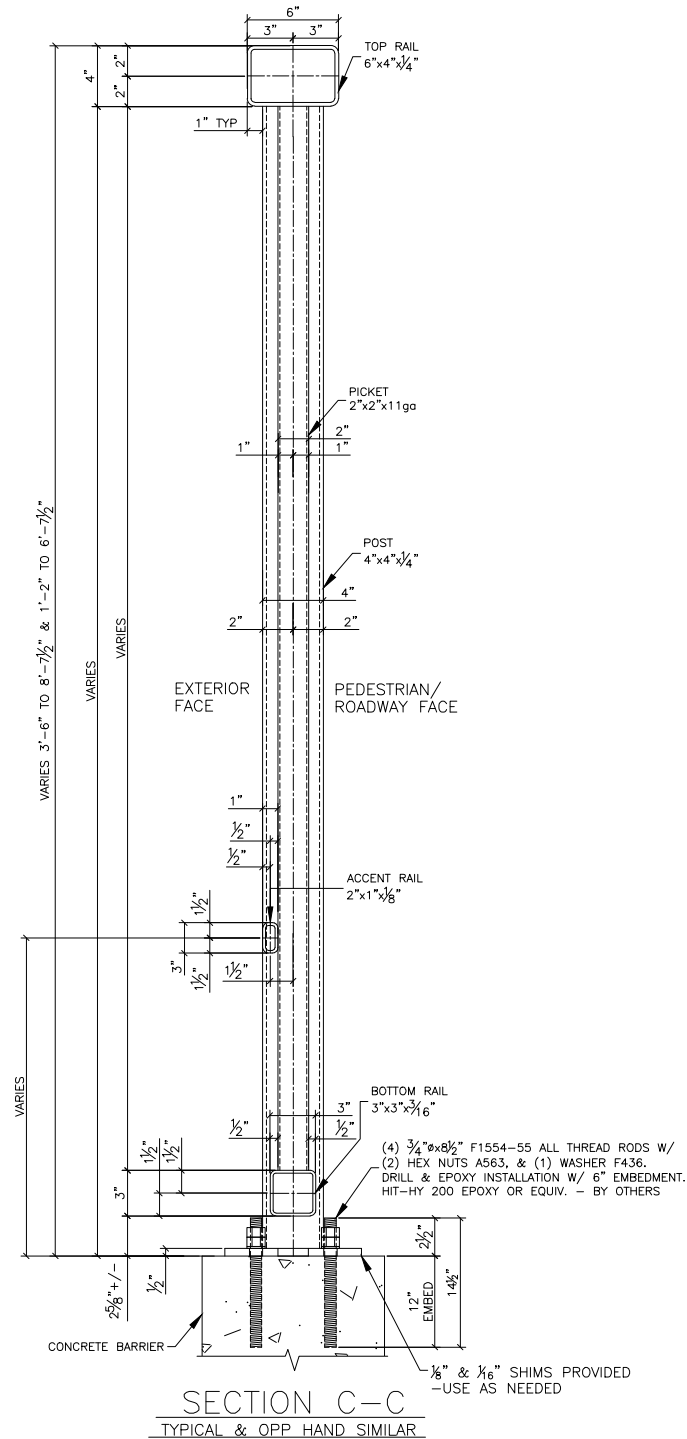
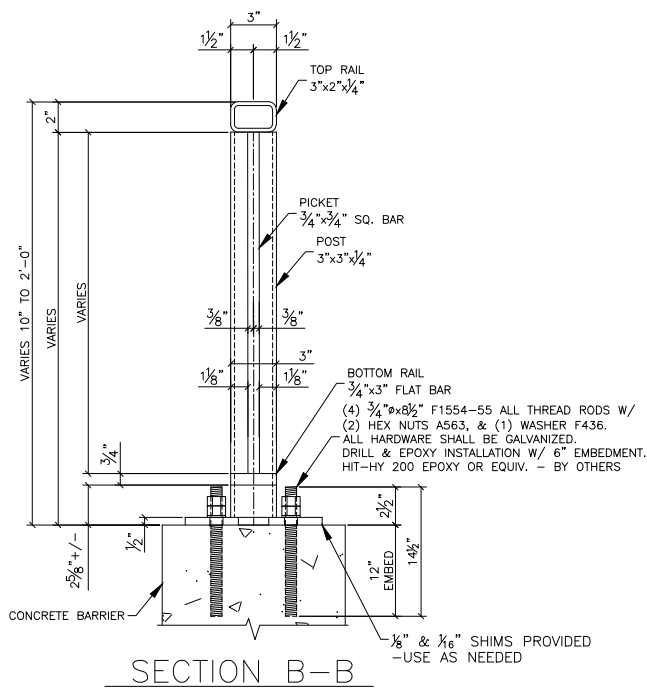
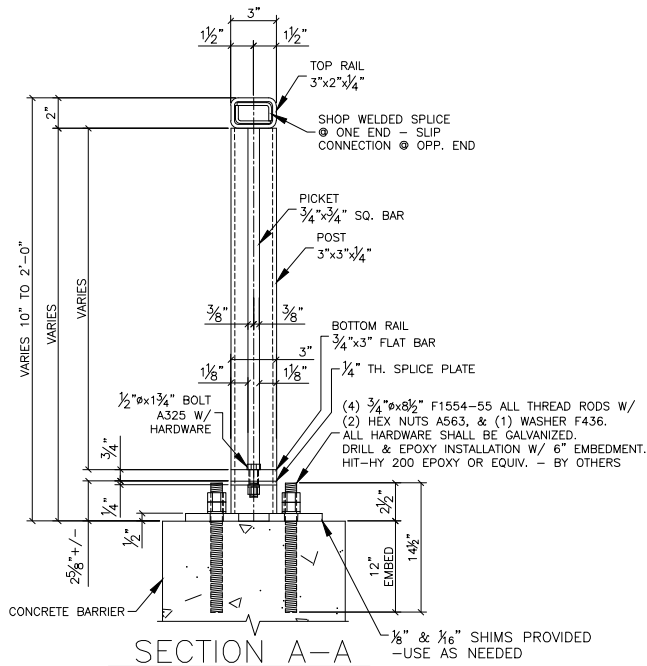
THIS DRAWING REPRESENTS OUR INTERPRETATION OF THE CONTRACT DOCUMENTS. HOWEVER, THE STEEL FABRICATOR AND THE STRUCTURAL STEEL DETAILER ASSUME NO RESPONSIBILITY FOR THE ACCURACY OF THE INFORMATION SHOWN ON THE CONTRACT DOCUMENTS, ARCHITECTURAL AND STRUCTURAL DESIGN DRAWINGS. THIS IS THE RESPONSIBILITY OF THE BUYER. UNLESS NOTED TO THE CONTRARY, ON THIS DRAWING WHEN IT IS RETURNED FROM THE APPROVAL PROCESS IT WILL BE ASSUMED THAT ALL INFORMATION SHOWN HEREIN HAS THE AFFIRMATION OF THE APPROVAL AUTHORITY. SUBSEQUENT CHANGES TO THE INFORMATION SHOWN ON THIS DRAWING AFTER THE FIRST SUBMISSION WILL BE CONSIDERED AS CONTRACT CHANGES AND ARE SUBJECT TO ADDITIONAL COST.

REVISION			
NO.	DATE	DESCRIPTION	RVSD BY
1	12-1-21	FOR APPROVAL	WM
2	12-21-21	ADDED APPROACH RAILING @ NORTH CURB RAILING	WM
3			
4			
5			
6			
7			

SHAWNEE STEEL & WELDING INC.
6124 MERRIAM DRIVE
MERRIAM, KANSAS 66203
(913) 432-8046

PROJECT: PARAGON STAR EAST BRIDGE @ LITTLE BLUE RIVER
LOCATION: VIEW HIGH DR., VIEW HIGH PKWY, RIVER RD., LEE SUMMIT, MO
PROJECT #12720.62
ARCHITECT: CRAIG DEROY ROGGE - MO # A-905244
CUSTOMER: -
SUBJECT: EAST BRIDGE ELEVATION VIEW

REVISION	DRAWN BY	JOB NO.	DWG. NO.
B	WM CHECKED BY WS	21-0042	EE2



NOTE 1:
ALL VENT HOLES REQ'D FOR GALV.
ARE LOCATED ON THE EXTERIOR FACE.
HORIZONTAL RAILS VENT HOLES MAY
BE LOCATED ON BOTTOM FACE.

NOTE 2:
ACCENT RAILS ARE LOCATED ON THE
EXTERIOR FACE.-TYP



FOR APPROVAL ONLY
(NOT FOR FIELD USE)

APPROVER/REVIEW AUTHORITY
PLEASE REVIEW THIS DRAWING CAREFULLY

THIS DRAWING REPRESENTS OUR INTERPRETATION OF THE CONTRACT DOCUMENTS. HOWEVER, THE STEEL FABRICATOR AND THE STRUCTURAL STEEL DETAILER ASSUME NO RESPONSIBILITY FOR THE ACCURACY OF THE INFORMATION SHOWN ON THE CONTRACT DOCUMENTS, ARCHITECTURAL AND STRUCTURAL DESIGN DRAWINGS. THIS IS THE RESPONSIBILITY OF THE BUYER. UNLESS NOTED TO THE CONTRARY, ON THIS DRAWING WHEN IT IS RETURNED FROM THE APPROVAL PROCESS IT WILL BE ASSUMED THAT ALL INFORMATION SHOWN HEREIN HAS THE AFFIRMATION OF THE APPROVAL AUTHORITY. SUBSEQUENT CHANGES TO THE INFORMATION SHOWN ON THIS DRAWING AFTER THE FIRST SUBMISSION WILL BE CONSIDERED AS CONTRACT CHANGES AND ARE SUBJECT TO ADDITIONAL COST.

REVISION			
NO.	DATE	DESCRIPTION	RVSD BY
△	12-1-21	FOR APPROVAL	WM
△			
△			
△			
△			
△			
△			

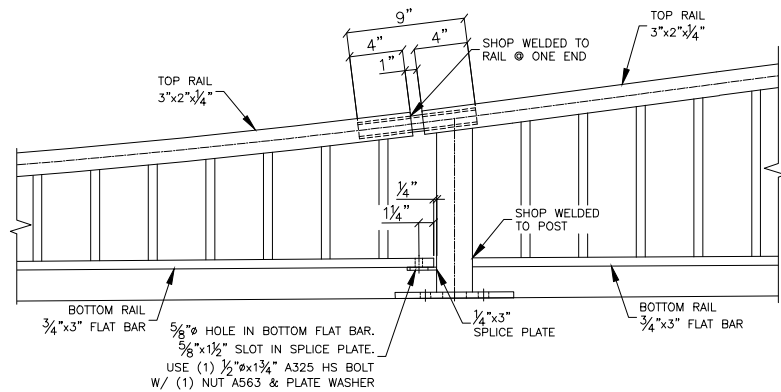


**SHAWNEE STEEL
& WELDING INC.**

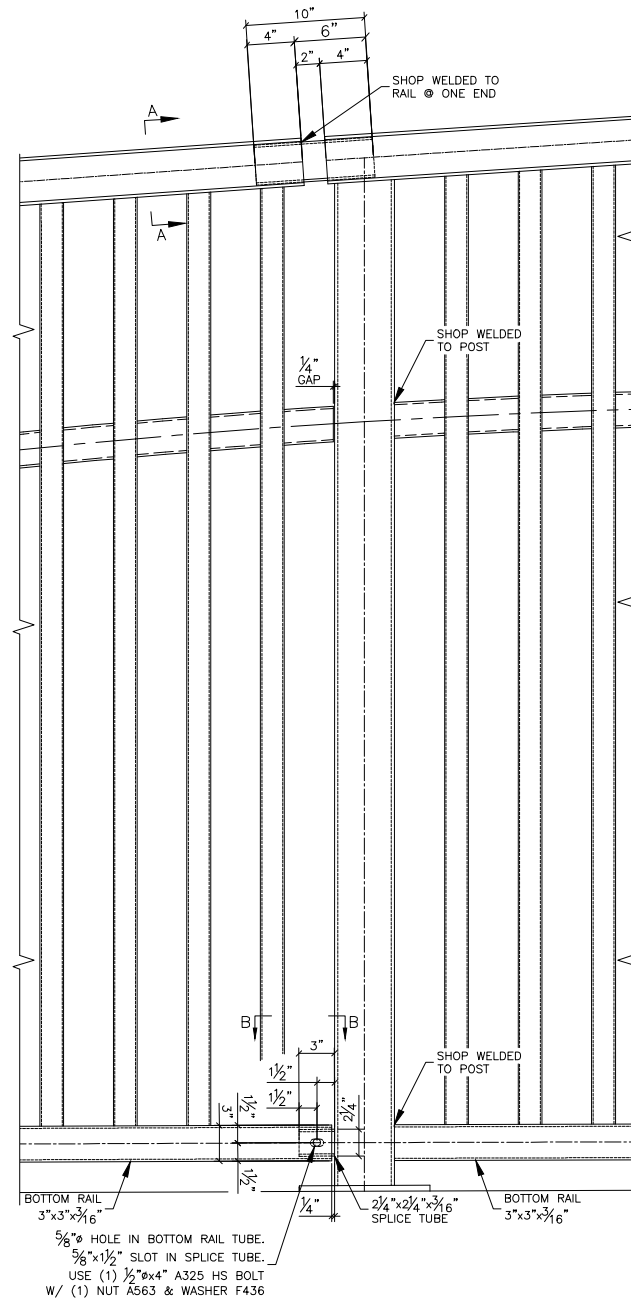
6124 MERRIAM DRIVE
MERRIAM, KANSAS 66203
(913) 432-8046

PROJECT: PARAGON STAR EAST BRIDGE @ LITTLE BLUE RIVER
LOCATION: VIEW HIGH DR., VIEW HIGH PKWY, RIVER RD., LEE SUMMIT, MO
PROJECT #12720.62
ARCHITECT: CRAIG DEROY ROGGE - MO # A-905244
CUSTOMER: -
SUBJECT: EAST BRIDGE ELEVATION/SECTION VIEW

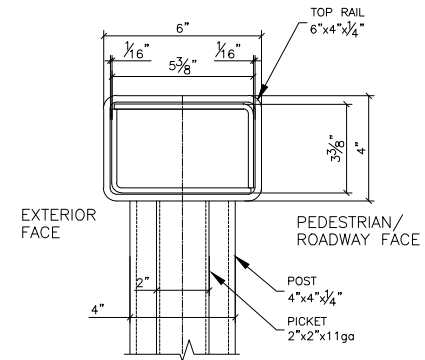
REVISION	DRAWN BY	JOB NO.	DWG. NO.
A	WM WS	21-0042	EE3



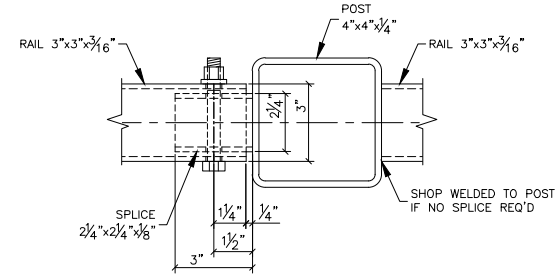
SPLICE DETAIL FOR WAVE PEDESTRIAN RAIL



SPLICE DETAIL ARCHED PANELS
TYPICAL & OPP HAND SIMILAR



SECTION A-A
TYPICAL & OPP HAND SIMILAR



SECTION B-B
TYPICAL & OPP HAND SIMILAR

FOR APPROVAL ONLY
(NOT FOR FIELD USE)

APPROVER/REVIEW AUTHORITY
PLEASE REVIEW THIS DRAWING CAREFULLY

THIS DRAWING REPRESENTS OUR INTERPRETATION OF THE CONTRACT DOCUMENTS. HOWEVER, THE STEEL FABRICATOR AND THE STRUCTURAL STEEL DETAILER ASSUME NO RESPONSIBILITY FOR THE ACCURACY OF THE INFORMATION SHOWN ON THE CONTRACT DOCUMENTS, ARCHITECTURAL AND STRUCTURAL DESIGN DRAWINGS. THIS IS THE RESPONSIBILITY OF THE BUYER. UNLESS NOTED TO THE CONTRARY, ON THIS DRAWING WHEN IT IS RETURNED FROM THE APPROVAL PROCESS IT WILL BE ASSUMED THAT ALL INFORMATION SHOWN HEREIN HAS THE AFFIRMATION OF THE APPROVAL AUTHORITY. SUBSEQUENT CHANGES TO THE INFORMATION SHOWN ON THIS DRAWING AFTER THE FIRST SUBMISSION WILL BE CONSIDERED AS CONTRACT CHANGES AND ARE SUBJECT TO ADDITIONAL COST.



REVISION			
NO.	DATE	DESCRIPTION	RVSD BY
△	12-1-21	FOR APPROVAL	WM
△			
△			
△			
△			
△			
△			



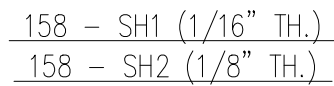
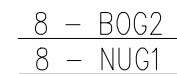
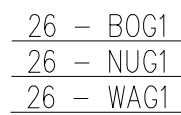
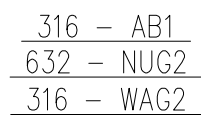
**SHAWNEE STEEL
& WELDING INC.**

6124 MERRIAM DRIVE
MERRIAM, KANSAS 66203
(913) 432-8046



PROJECT: PARAGON STAR EAST BRIDGE @ LITTLE BLUE RIVER
LOCATION: VIEW HIGH DR., VIEW HIGH PKWY, RIVER RD., LEE SUMMIT, MO
PROJECT #12720.62
ARCHITECT: CRAIG DEROY ROGGE - MO # A-905244
CUSTOMER: -
SUBJECT: EAST BRIDGE ELEVATION/DETAIL VIEW

REVISION	DRAWN BY	JOB NO.	DWG. NO.
A	WM CHECKED BY WS	21-0042	EE4



APPROVER/REVIEW AUTHORITY
PLEASE REVIEW THIS DRAWING CAREFULLY

THIS DRAWING REPRESENTS OUR INTERPRETATION OF THE CONTRACT DOCUMENTS. HOWEVER, THE STEEL FABRICATOR AND THE STRUCTURAL STEEL DETAILER ASSUME NO RESPONSIBILITY FOR THE ACCURACY OF THE INFORMATION SHOWN ON THE CONTRACT DOCUMENTS, ARCHITECTURAL AND STRUCTURAL DESIGN DRAWINGS. THIS IS THE RESPONSIBILITY OF THE BUYER. UNLESS NOTED TO THE CONTRARY, ON THIS DRAWING WHEN IT IS RETURNED FROM THE APPROVAL PROCESS IT WILL BE ASSUMED THAT ALL INFORMATION SHOWN HEREIN HAS THE AFFIRMATION OF THE APPROVAL AUTHORITY. SUBSEQUENT CHANGES TO THE INFORMATION SHOWN ON THIS DRAWING AFTER THE FIRST SUBMISSION WILL BE CONSIDERED AS CONTRACT CHANGES AND ARE SUBJECT TO ADDITIONAL COST.

REVISION			
NO.	DATE	DESCRIPTION	RVS'D BY
△	12-1-21	FOR APPROVAL	WM
△			
△			
△			
△			
△			
△			
△			
△			
INSPECTION		INSPECTION	
FABRICATION		WELDING	
IN HOUSE	<input checked="" type="checkbox"/>	VISUAL	100 %
OUTSIDE	<input type="checkbox"/>		
			(OTHER) _____ %



6124 MERRIAM DRIVE
MERRIAM, KANSAS 66203
(913) 432-8046

PROJECT: PARAGON STAR EAST BRIDGE @ LITTLE BLUE RIVER
LOCATION: VIEW HIGH DR., VIEW HIGH PKWY, RIVER RD., LEE SUMMIT, MO
PROJECT #12720.62
ARCHITECT: CRAIG DEROY ROGGE - MO # A-905244
CUSTOMER: -
SUBJECT: FIELD BOLTS

MATERIAL THIS SHEET: <input checked="" type="checkbox"/> DELIVERED <input type="checkbox"/> ERECTED		FIELD BOLT LIST: FB2	
FINISH: SEE F1 SHEET		ERECTION DWG. REF: E DWGS	
REVISION A	DRAWN BY WM	JOB NO. 21-0042	DWG. NO. FB2
	CHECKED BY WS		



FOR APPROVAL ONLY
(NOT FOR FIELD USE)

**WEST & EAST BRIDGE PANELS & PEDESTRIAN RAIL
FINISHING:**

PRE-GALVANIZING CLEANING: SSPC-SP2

GALVANIZING: GALVANIZE PER ASTM A123.

AFTER GALVANIZING CLEANING: LUMPS/DRIPS, PROJECTIONS, GLOBULES, HEAVY DEPOSITES, BARE SPOTS, OR SURFACE IRREGULARITIES OF GALVANIZING ARE CONSIDERED UNACCEPTABLE DUE TO HEIGHTENED ASTHETICS & VISUAL QUALITIES REQUIRED.

PRE-PAINT PREP/CLEANING: THE SURFACE PREPARATION SHALL MEET THE REQUIREMENTS OF ASTM D6386.




PRIME COAT: EPOXY BASE COAT AT 2.0 - 6.0 mils DFT.

TOP COAT: URETHANE TOP COAT AT 3.0 - 6.0 mils DFT.

COLOR: BRIDGE PANELS AND PEDESTRIAN RAIL:
BLACK - APPROVER TO PROVIDE COLOR NUMBER

FINISH/SHEEN: APPROVER TO SPECIFY "MATTE", "SATIN", "SEMI-GLOSS", OR "GLOSS"



	FOR APPROVAL	12-6-21
		
PROJECT NAME PARAGON STAR WEST & EAST BRIDGE		
LOCATION LEE SUMMIT, MO		
CUSTOMER PARAGON STAR DEVELOPER		
PROJECT NO. 21-0042		
 SHAWNEE STEEL & WELDING INC. 6124 MERRIAM DRIVE MERRIAM, KANSAS 66203 (913) 432-8046		
DATE 12-6-21		JOB No. 21-0042
DRAWN BY WM		DRG No. F1